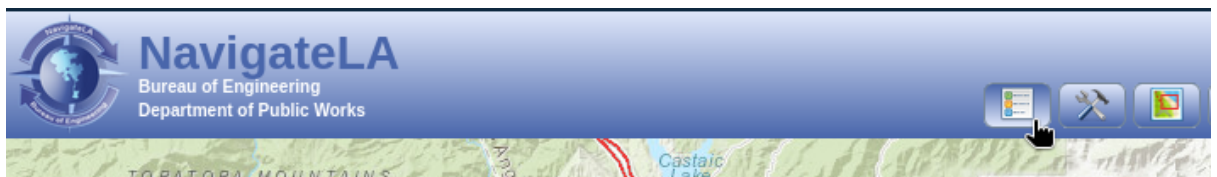


# How to Upload Data into NavLA

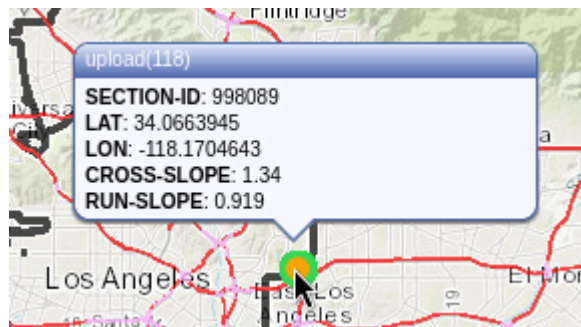
The instructions below will show a user how to download the rover data from the React web-app side-walk project and use it to upload the rover data to the Navigate LA website. You will need access to the internet to access both side-walk web app and Navigate LA. Additionally, you will require free storage space for downloading the rover data from the React web-app side-walk project.

1. Go to: <http://localhost:3000> to visit the side walk web app.
2. From the home page:
  - a. hover the mouse over the “NavigateLA” link located at the top of the navigation bar.
  - b. click on “NavigateLA”.
3. The Navigate LA web page will now be displayed.
  - a. In order to download sidewalk data stored in Azure storage:
    - i. Click on the green button labeled “Select a Folder” located on the bottom left of the webpage.
    - ii. Select from the list a folder.
      1. “Itemized” folders contain individual csv files that will allow you to cycle through a specific csv data file in the following step (b).
      2. “All” folders contain all the csv files for a particular month or all the csv data combined. Allows for quick download of all data and no cycling through.
    - iii. Next, click on the blue button (*button 2.*).
      1. If you selected an “Itemized” folder, then the blue middle button at the bottom of the web page, now labeled “Get Single CSV” will appear.
        - a. Click on “Get Single CSV” button once to display the data on the first available csv file of the selected folder in the previous state
        - b. Data values from the first csv file will now populate on the scrollable table located at the top of the web page.
        - c. Consecutive clicks on “Get Single CSV” button will iterate through the list of csv files of the selected folder in the previous step.
        - d. To download the desired csv file currently displayed, click on the blue button (*button 3.*) labled “Download CSV” located on the bottom right corner of the web page, only once (*repeated clicks will re-download the currently displayed csv file*).
        - e. CSV File should now be downloaded to your computer (*location of the download depends on your browser settings*). Name of the downloaded csv file is “upload.csv”.
      2. If you selected an “All” folder, then the blue middle button at the bottom of the web page, now labeled “Get All CSV” will appear.
        - a. Click on “Get All CSV” button (*button 2.*) once. This prepares all files in the background for download. No data will be displayed on the table.
        - b. Next, to download all the csv data available on the selected folder, click on the blue “Download CSV” button (*button 3.*) located at the bottom right corner of the web page.

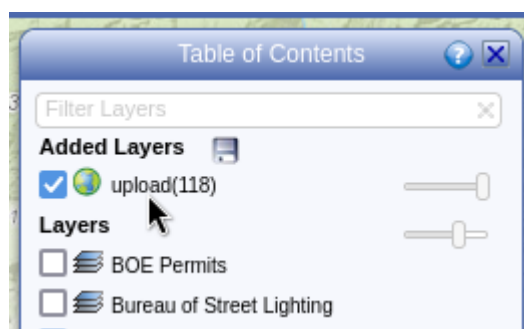
- c. CSV File should now be downloaded to your computer (*location of the download depends on your browser settings*). Name of the downloaded csv file is "upload.csv"
  4. The next step is to upload the downloaded csv file (upload.csv) to NavigateLA web site, go to <https://navigatea.lacity.org/navigatea/>
  5. There are two ways to upload data:
    - a. The fastest and simplest is to drag and drop the "upload.csv" file in to their web page.
      - i. Locate the "upload.csv" file you downloaded in the previous steps.
      - ii. Click and hold the file and drag the file over the NavigateLA website and release.
      - iii. Click on the "Show Table of Contents" icons to display the layers. Located at the top of the Navigate LA web page.



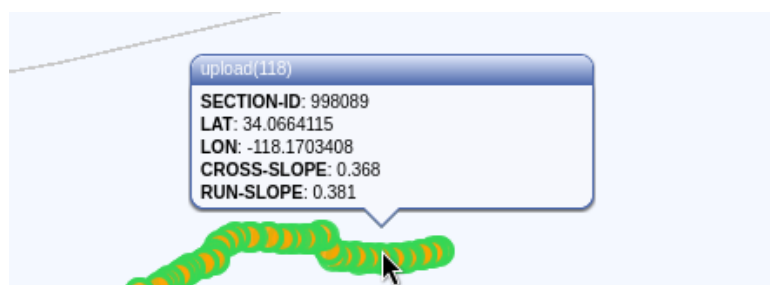
- iv. The uploaded csv file will have added a new layer which visible on the map as a orange/green circles.



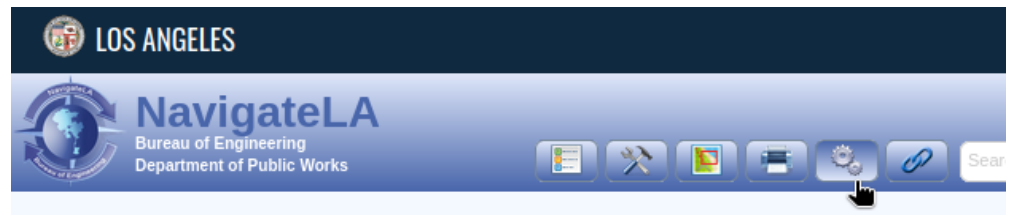
- v. The table of contents will also show the added layer.



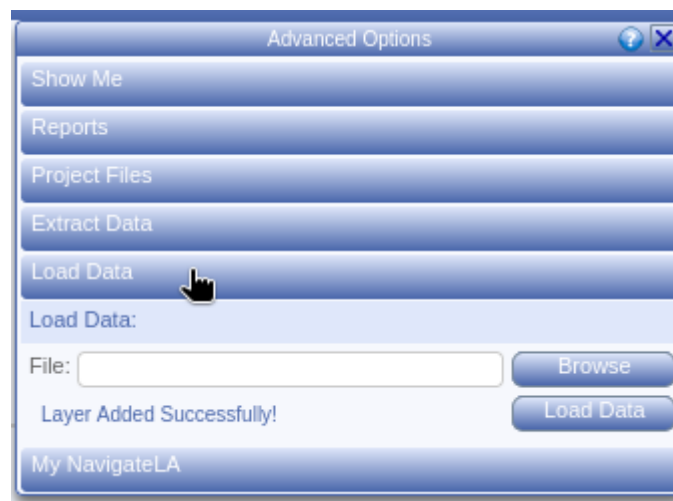
- vi. Zoom on the orange/green circles to see data collected by the rover.



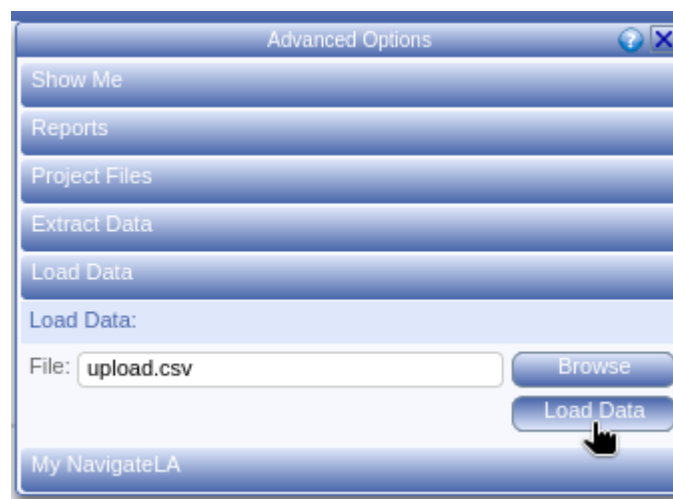
- b. The second method uses the Navigate LA website's feature "Load Data".
  - i. The "Load Data" button is located in Advanced Options menu. The gear looking icon for Advanced Options is located at the top of the Navigate LA web page.
  - ii. Click on the Advanced Options.



- iii. On the pop-up menu select "Load Data".



- iv. Click on the Browse button. A window will pop up allowing you to locate the "upload.csv" you downloaded from the previous steps.
- v. Once your file is selected, click on the "Load Data" button located *underneath* the "Browse" button.



- vi. The orange/green circles will appear on the map as shown before.
- vii. View the details of the rover data by zooming in as shown before.