



BRAZIL BIRDING

E X P E R T S

SOUTH BRAZIL ATLANTIC FOREST

7 DAYS



Welcome to the Atlantic Forest of Southern Brazil. Here you will see an amazing landscape with our Brazilian Pine Tree: the beautiful Araucaria Tree! In this short trip, the environments we will cross will cover a set of endemic birds from this region and special birds from the Southern Cone.

Our journey will start after the II Ornithological Congress of the Americas, departing from Gramado (Rio Grande do Sul State) and finishing in Joinville (Santa Catarina, State).

We wish you a great trip ahead. Have fun!

SOUTH BRAZIL ATLANTIC FOREST

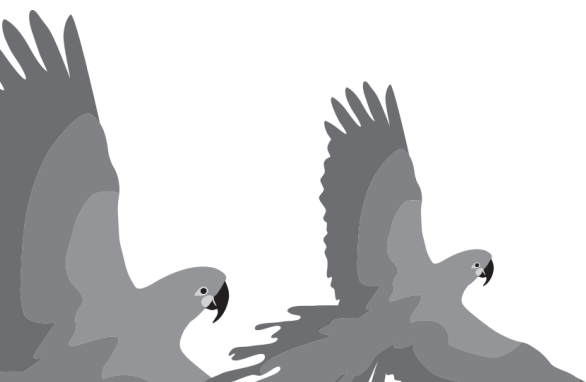
(Rio Grande do Sul and Santa Catarina)

Guide: Fernando Farias

SUMMARIZED ITINERARY

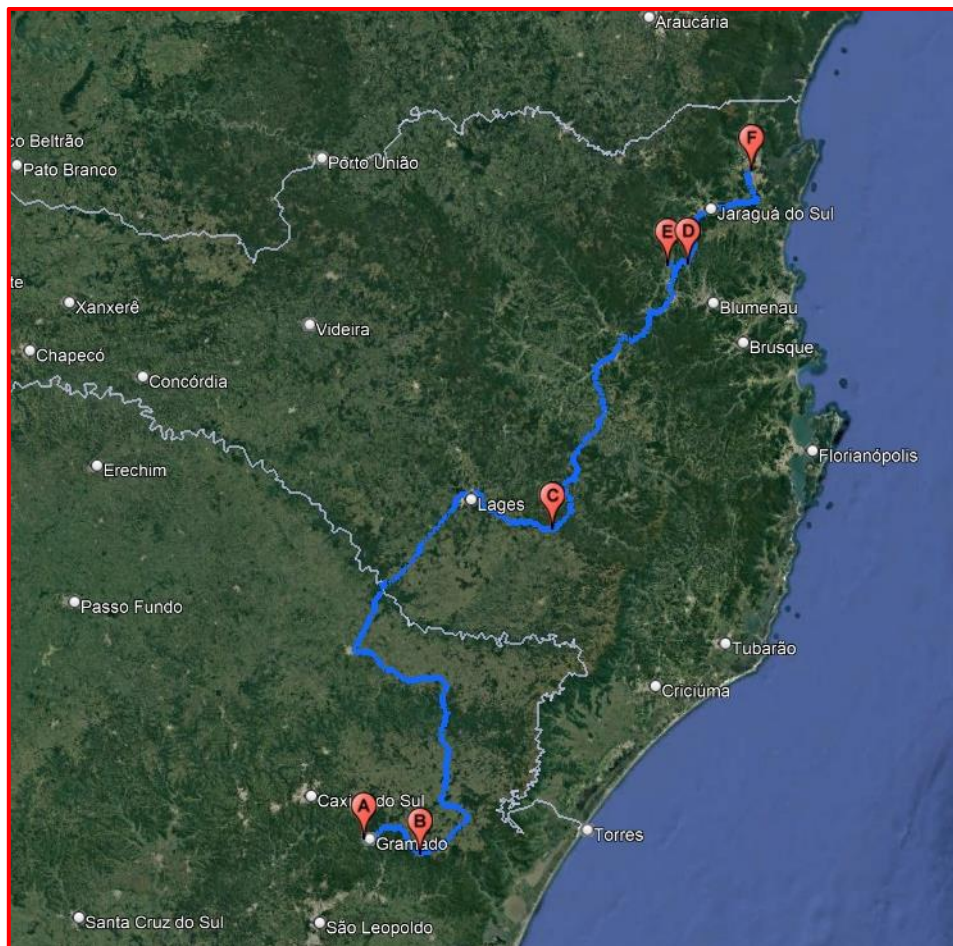
| Day | Location | Comments |
|------------|---|----------------------------------|
| 1 (Aug/5) | Gramado - São Francisco de Paula (50km) | Transfer. AM and PM Birding. |
| 2 (Aug/6) | São Francisco de Paula - Urupema (350km) | AM Birding. Transfer. PM Birding |
| 3 (Aug/7) | Urupema | AM and PM Birding |
| 4 (Aug/8) | Urupema - Pomerode (270km) | AM Birding. Transfer. PM Birding |
| 5 (Aug/9) | Pomerode - Rio dos Cedros - Joinville (130km) | AM Birding. Transfer. PM Birding |
| 6 (Aug/10) | Joinville | AM and PM Birding |
| 7 (Aug/11) | Joinville - Airport (Joinville or Navegantes) | AM Birding. Transfer. Departures |

Date: August 5th to 11th of 2023.



OVERVIEW OF THE COMPLETE ITINERARY

Gramado (A), São Francisco de Paula (B), Urupema (C), Pomerode (D), Rio dos Cedros (E), Joinville (F).



DETAILED ITINERARY

Day 1: Transfer from Gramado to **SÃO FRANCISCO DE PAULA** (+/-1hr [50km]). AM and PM Birding.

Area description: São Francisco de Paula's municipality is 900 meters above sea level. Here we will look for some montane bird species in the Araucaria Forest of the São Francisco de Paula National Forest. We will also look for some natural grasslands and marsh birds on the route to the forest.

Targets: our main targets are the Straight-billed Reedhaunter (*Limnocites rectirostris*) and the Saffron-cowled Blackbird (*Xanthopsar flavus*). Other notable birds we might see include Lesser Grass-Finch (*Emberizoides ypiranganus*), Black-and-white Monjita (*Heteroxolmis dominicanus*), Black-and-rufous Warbling-Finch (*Poospiza nigrorufa*), Olive Spinetail (*Cranioleuca obsoleta*), Brown-breasted Pygmy-Tyrant (*Hemitriccus obsoletus*), Blue-bellied Parrot (*Tricharia malachitacea*) and other montane forest birds such as Violet-crowned Plovercrest (*Stephanoxis loddigesii*) and Swallow-tailed Cotinga (*Phibalura flavirostris*). If lucky, we could even see the Crowned Eagle (*Urubitinga coronata*) and have slight chances of seeing Red-spectacled Parrots (*Amazona pretrei*) flying over. Always keep an eye out.



Straight-billed Reedhaunter



Saffron-cowled Blackbird



Day 2: AM Birding and transfer to Urupema (+/-5hrs [350km]) for PM Birding.

Day 3: AM and PM Birding in **URUPEMA**.

Area description: located in the state of Santa Catarina, situated at 1450 meters, in a valley surrounded by the Morro das Torres, Urupema is considered the coldest town in Brazil, with temperatures reaching -9°C during the winter. The landscape here is unique; a mix of rocky outcrops and Araucaria Forest, a subtype of the Atlantic Rainforest where the Brazilian Pine Tree (*Araucaria angustifolia*) is the dominant tree species. Here, we will stay at Eco Pousada Rio dos Touros, which has a good structure for birding and many interesting species around the lodge.



Targets: These environments are home to interesting endemic species such as the Striolated Tit-Spinetail (*Leptasthenura striolata*) and the Long-tailed Cinclodes (*Cinclodes pabsti*). We will also look for the Freckle-breasted Thornbird (*Phacellodomus striaticollis*), Gray-throated Warbling-Finch (*Microspingus cabanisi*), Planalto Tapaculo (*Scytalopus pachecoi*), Mottled Piculet (*Picumnus nebulosus*), Hellmayr's Pipit (*Anthus hellmayri*), Chestnut-backed Tanager (*Tangara preciosa*), Black-and-White Monjita (*Xolmis dominicanus*), Chimango Caracara (*Milvago chimango*), Long-tufted Screech-Owl (*Megascops sanctaecatarinae*), Blue-and-Yellow Tanager (*Pipraeidea bonariensis*) and more.





Striolated Tit-Spinetail



Mottled Piculet

Day 4: AM Birding if needed and transfer to **POMERODE** (+/- 4 ½ hrs [270km]) for PM Birding.

Area description: we will be based in Pomerode town, where there is a structure for accommodation. From there, we will drive to Rio dos Cedros, an Atlantic Forest patch mixed with Araucaria Forest, where we can see some extraordinary birds.

Targets: the main target here will be Creamy-bellied Gnatcatcher (*Polioptila lactea*). We will also look for Green-throated Euphonia (*Euphonia chalybea*), Brown-breasted pygmy-tyrant (*Hemitriccus obsoletus*), Giant antshrike (*Batara cinerea*), Brown tanager (*Orchesticus abeillei*), Green-backed becard (*Pachyramphus viridis*), Plush-crested jay (*Cyanocorax chrysops*), Crested black-tyrant (*Knipolegus lophotes*), and if we are lucky enough, we will find the rare Helmeted Woodpecker (*Celeus galeatus*).





Creamy-bellied
Gnatcatcher

Day 5: Transfer to Rio dos Cedros (30min [20km]) and AM Birding. Transfer to Joinville (+/- 2½hrs [130km]) for PM Birding.

Day 6: AM and PM Birding in **JOINVILLE**.

Area description: Joinville is the biggest city in Santa Catarina and, simultaneously, the city with the most species of birds. Undoubtedly one of the most critical hotspots of the Atlantic Forest. This richness (more than 440 species) is due to the variety of environments and the altitudinal gradient that go from mangroves and lowland forests to montane forests up to 800 meters of altitude.

Targets: the main reason we visit this location is for some notable South Brazil endemics: the Kaempfer's Tody-Tyrant (*Hemitriccus kaempferi*), Parana Antwren (*Formicivora acutirostris*), Scaled Chachalaca (*Ortalis squamata*) and Restinga Tyrannulet (*Phylloscartes kronei*). We also have chances for the Sooty Grassquit (*Asemospiza fuliginosa*), Black-backed Tanager (*Stilpnia peruviana*), and many others. We will visit the mangrove area to see and enjoy the beauty of the Scarlet Ibises.



Scaled Chachalaca





Parana Antwren



Scarlet Ibis

Day 7: AM Birding. Transfer to the airport for DEPARTURE.

Flights departing from Joinvile – afternoon/ evening.

Flights departing from Navegantes – evening.

