

# eHealth para acompanhamento e manejo toxicidades

by Alessandra Menezes Morelle

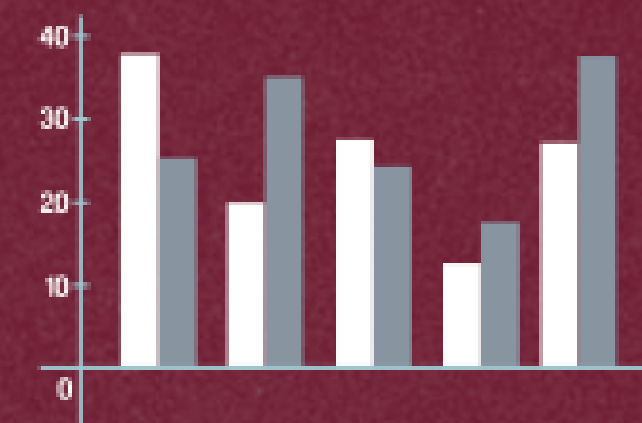
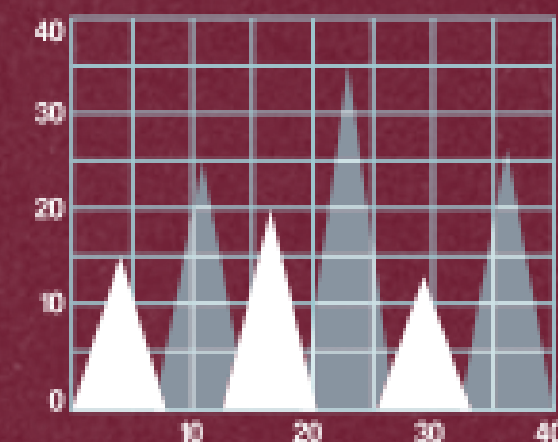
*Amm*  
ALESSANDRA  
MENEZES MORELLE





# Contexto

- 2018: 18,1 milhões de novos casos de câncer em todo o mundo.
- 9,6 milhões de mortes relacionadas com o câncer .
- Relatório de vigilância global sugere uma tendência para o aumento da sobrevivência, com alguns tipos de câncer progredindo para a cronicidade.





# Contexto

- Medicamentos: disponíveis em formulações orais para administração domiciliar.
- Vigilância presencial reduzida por profissionais de saúde.
- Novas abordagens para o gerenciamento ideal de pacientes que permitam a contenção dos custos de saúde são urgentemente necessárias .

Support Care Cancer (2020) 28:4589–4612





# Definições

Prestação de serviços de saúde apoiados em telecomunicações ou tecnologia digital para melhorar ou apoiar os serviços de saúde.





- A telemedicina representa serviços médicos prestados remotamente a pacientes por profissionais de saúde utilizando plataformas de telecomunicações.

Support Care Cancer (2020) 28:4589–4612



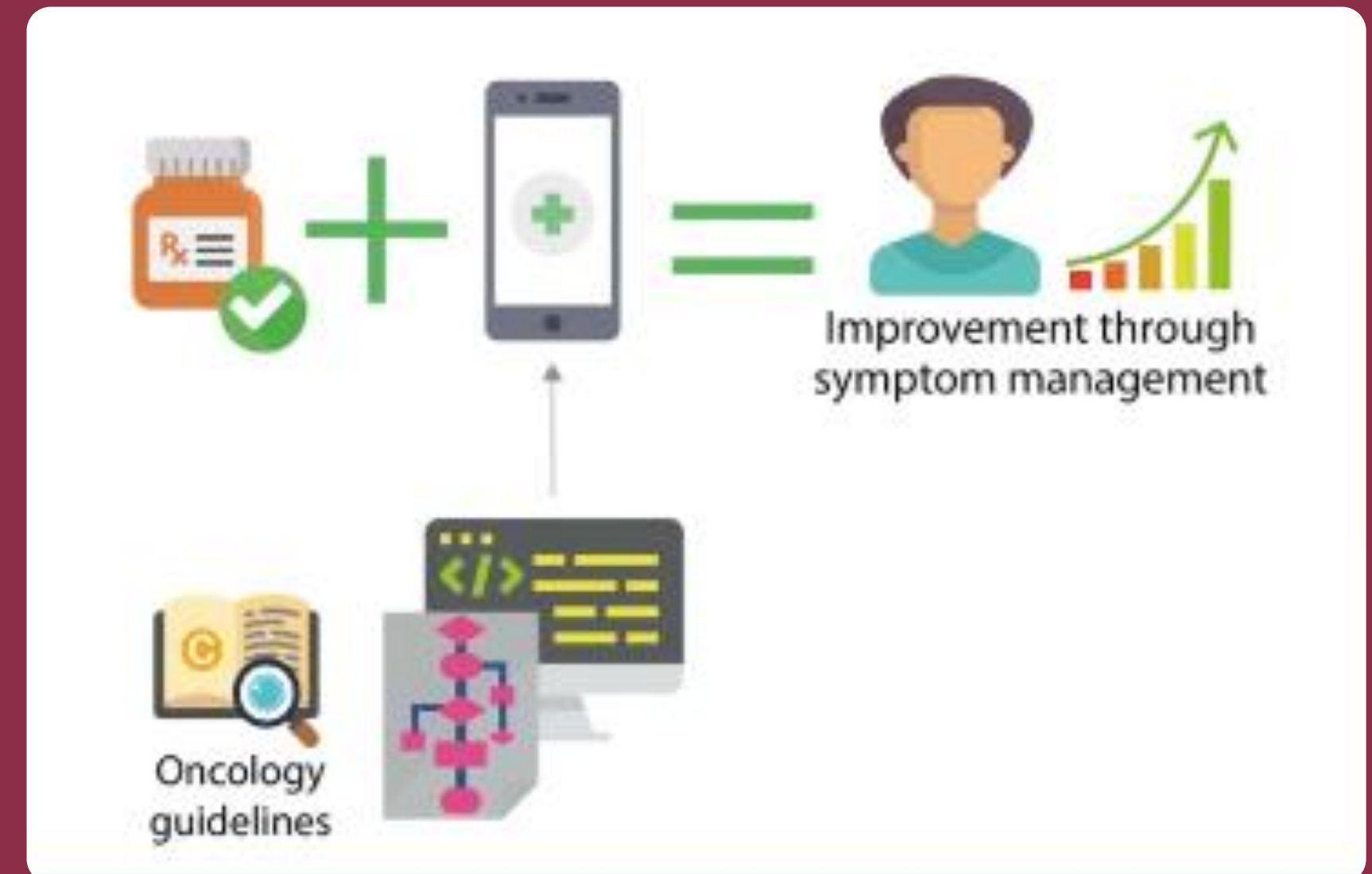
*Amm*  
ALESSANDRA  
MENEZES MORELLE



- Telemonitoramento é o uso de tecnologia digital para monitorar frequente ou continuamente os sinais vitais dos pacientes ou quaisquer outros sintomas.

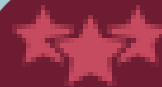


- A terapêutica digital incorpora algoritmos baseados em dados médicos diretrizes e melhores práticas, que transformam os dados coletados em insights acionáveis, com o objetivo de agregar valor resultados clínicos baseados em evidências (de estudos clínicos ou evidências do mundo real).





# Benefícios do monitoramento digital



## Melhoria na qualidade de vida do paciente

O monitoramento digital pode fornecer dados importantes para profissionais de saúde tomarem decisões mais precisas, melhorando a eficácia do tratamento e, conseqüentemente, a qualidade de vida do paciente.



## Deteccão precoce de complicações

Com a ajuda de dispositivos wearables e sensores, é possível monitorar os sinais vitais dos pacientes em tempo real, o que permite a deteção precoce de possíveis dores, complicações ou efeitos colaterais do tratamento.



## Aumento da eficiência no tratamento

A tecnologia de monitoramento digital pode ajudar a tornar o tratamento menos invasivo e mais eficiente, através de uma abordagem personalizada para cada paciente, evitando o uso de procedimentos desnecessários e reduzindo o tempo de recuperação.



# Tecnologias utilizadas no monitoramento digital



## Aplicativos móveis e dispositivos

Os dispositivos de monitoramento vestíveis, como relógios inteligentes e pulseiras avançadas, são cada vez mais populares, permitindo que os pacientes monitorem seus sinais vitais e dados de saúde continuamente.



## Sensores inteligentes e internet das coisas

Sensores inteligentes e a internet das coisas (IoT) são tecnologias que estão sendo usadas para monitorar o paciente em tempo real, coletando dados precisos e relevantes de diversos dispositivos.



# PRO - Patient Reported Outcomes

- O impacto das condições e/ou tratamentos relacionados à saúde fornecidos pelo autorrelato do paciente, sem introdução de preconceitos por terceiros.

JAMA Network Open. 2022;5(3):e221078.

doi:10.1001/jamanetworkopen.2022.1078



# Benefícios do ePRO

- Minimizam a carga dos sintomas melhorando a qualidade de vida.
- Reduzem hospitalizações aumentando o tempo de tolerância ao tratamento de câncer.
- Melhora da sobrevivência

Basch E, Deal AM, Dueck AC, et al. JAMA. 2017;318(2):197-198.

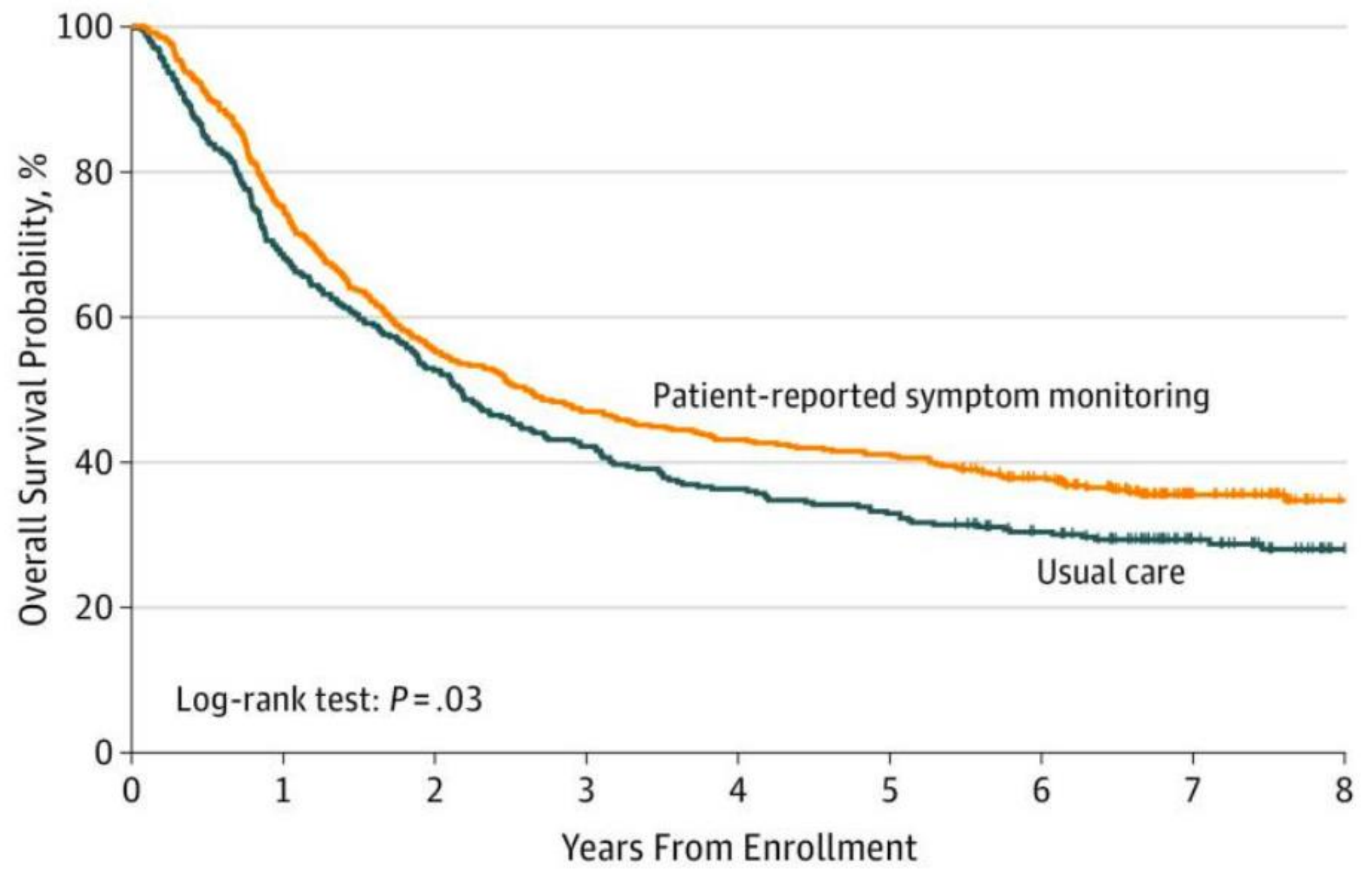
Denis F, Basch E, Septans AL, et al. JAMA. 2019;321(3):306-307.

Basch E, Stover AM, Schrag D, et al. JCO Clin Cancer Inform. 2020;4:947-957.



*Amm*  
ALESSANDRA  
MENEZES MORELLE





No. at risk	0	1	2	3	4	5	6	7	8
Patient-reported symptom monitoring	441	331	244	207	190	181	148	65	33
Usual care	325	223	171	137	118	107	89	50	27



# Justificativas para estes resultados

- Identificação precoce de sintomas potencialmente graves.
- Melhor tolerância ao tratamento.

Basch E, Deal AM, Dueck AC, et al. JAMA. 2017;318(2):197-198.

Denis F, Basch E, Septans AL, et al. JAMA. 2019;321(3):306-307.

Basch E, Stover AM, Schrag D, et al. JCO Clin Cancer Inform. 2020;4:947-957.



JAMA | **Original Investigation**

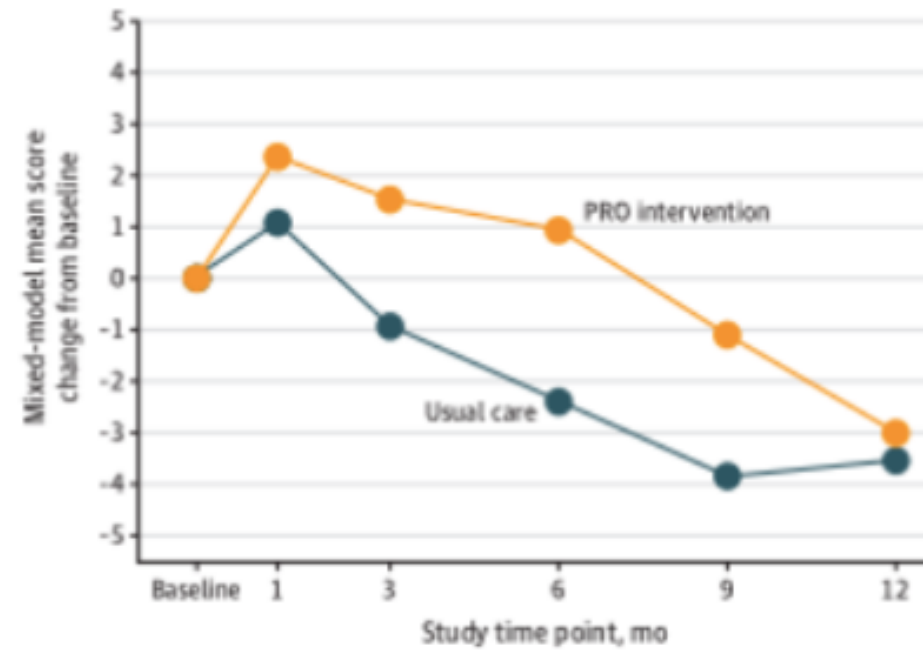
# Effect of Electronic Symptom Monitoring on Patient-Reported Outcomes Among Patients With Metastatic Cancer A Randomized Clinical Trial

Ethan Basch, MD, MSc; Deborah Schrag, MD, MPH; Sydney Henson, BS; Jennifer Jansen, MPH; Brenda Ginos, MS; Angela M. Stover, PhD;  
Philip Carr, MPH; Patricia A. Spears, BS; Mattias Jonsson, BA; Allison M. Deal, MS; Antonia V. Bennett, PhD; Gita Thanarajasingam, MD;  
Lauren J. Rogak, MA; Bryce B. Reeve, PhD; Claire Snyder, PhD; Deborah Bruner, PhD; David Cella, PhD; Lisa A. Kottschade, MSN; Jane Perlmutter, PhD;  
Cindy Geoghegan, MA; Cleo A. Samuel-Ryals, PhD; Barbara Given, PhD; Gina L. Mazza, PhD; Robert Miller, MD; Jon F. Strasser, MD; Dylan M. Zylla, MD;  
Anna Weiss, MD; Victoria S. Blinder, MD; Amylou C. Dueck, PhD

*Ann*  
ALESSANDRA  
MENEZES MORELLE

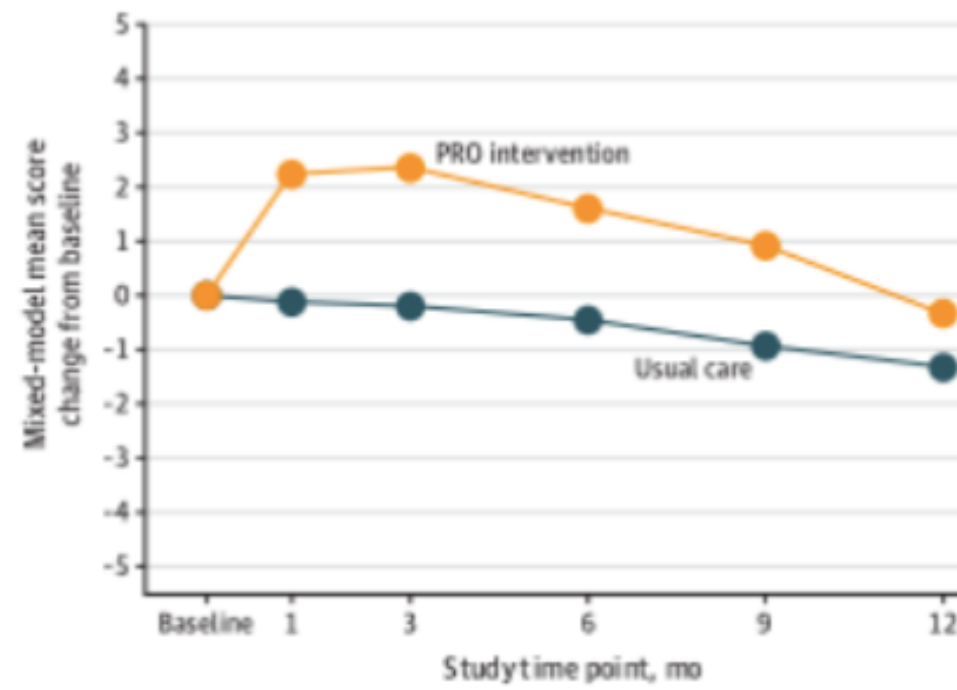


**A** Mean change in physical function score



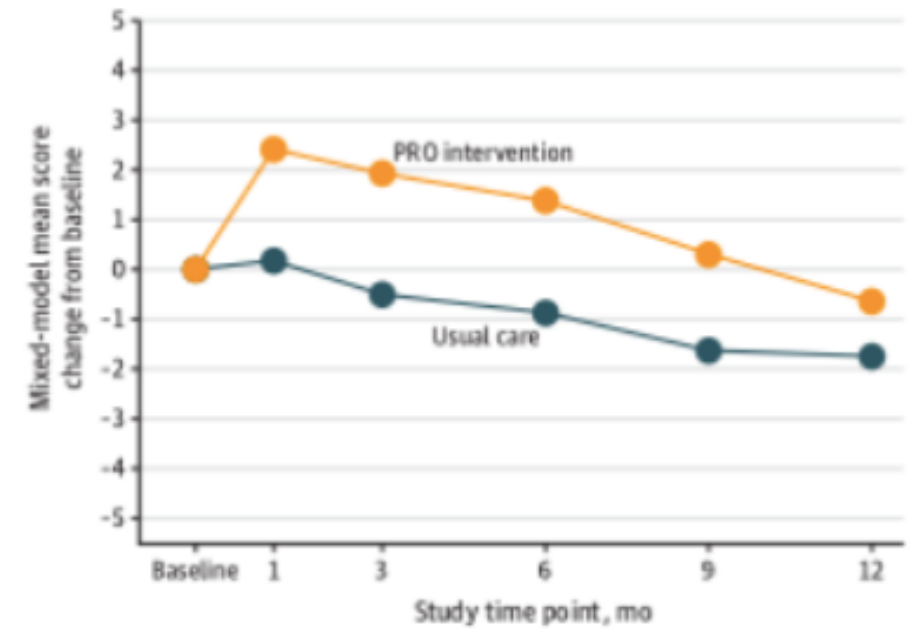
Physical Function

**B** Mean change in symptom control score



Symptom Control

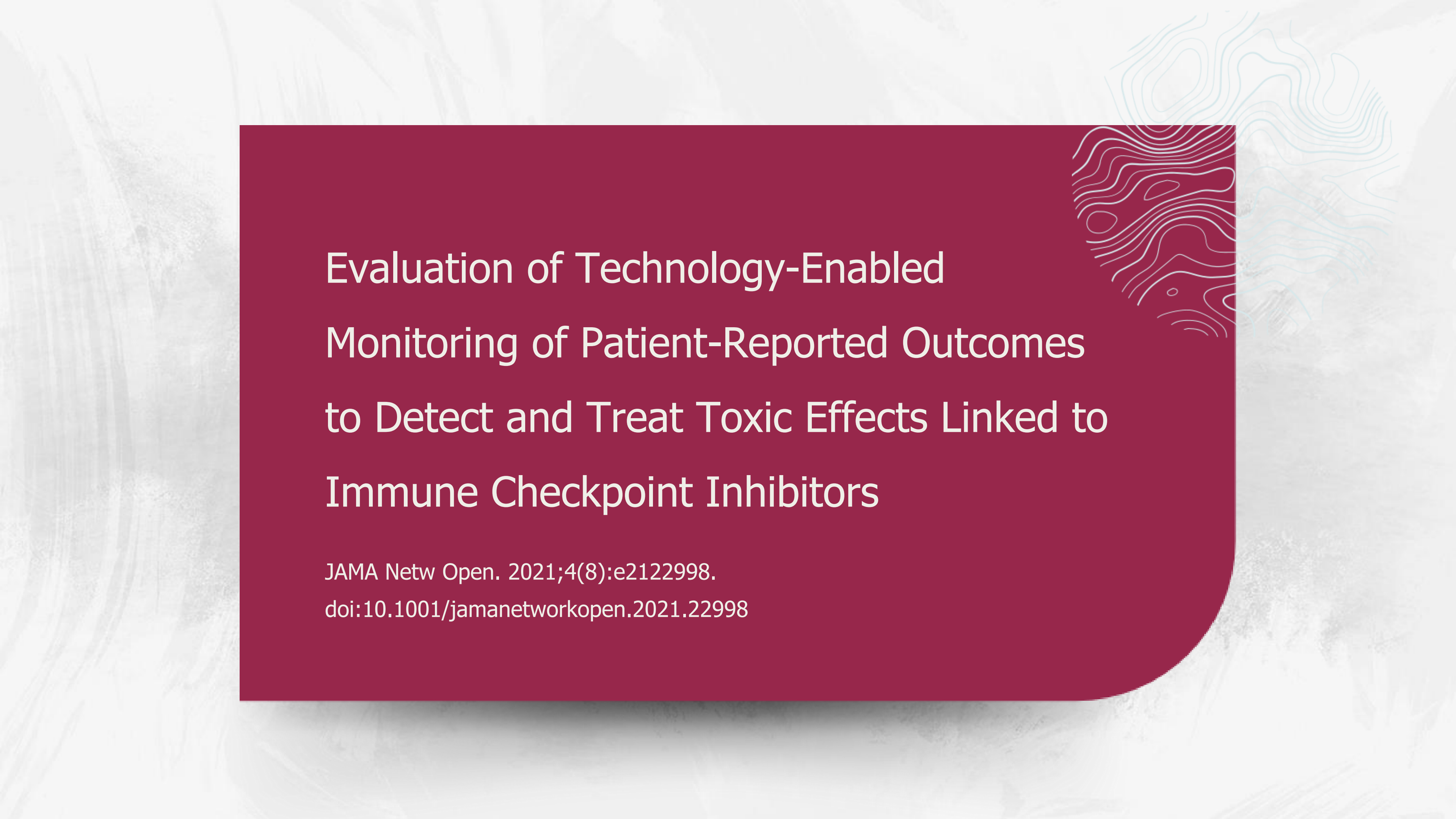
**C** Mean change in health-related quality-of-life score



Quality of Life

JAMA Published online June 5, 2022





# Evaluation of Technology-Enabled Monitoring of Patient-Reported Outcomes to Detect and Treat Toxic Effects Linked to Immune Checkpoint Inhibitors

JAMA Netw Open. 2021;4(8):e2122998.

doi:10.1001/jamanetworkopen.2021.22998



# Sintomas

- 7% ligados a uma correção do curso de tratamento .
- Quando nenhum alerta foi acionado, em 95% das vezes não foi observado nenhum excesso de toxicidade ou intervenção relacionada.



**Table 2. Frequency of Symptom Reporting and Alerts Triggered**

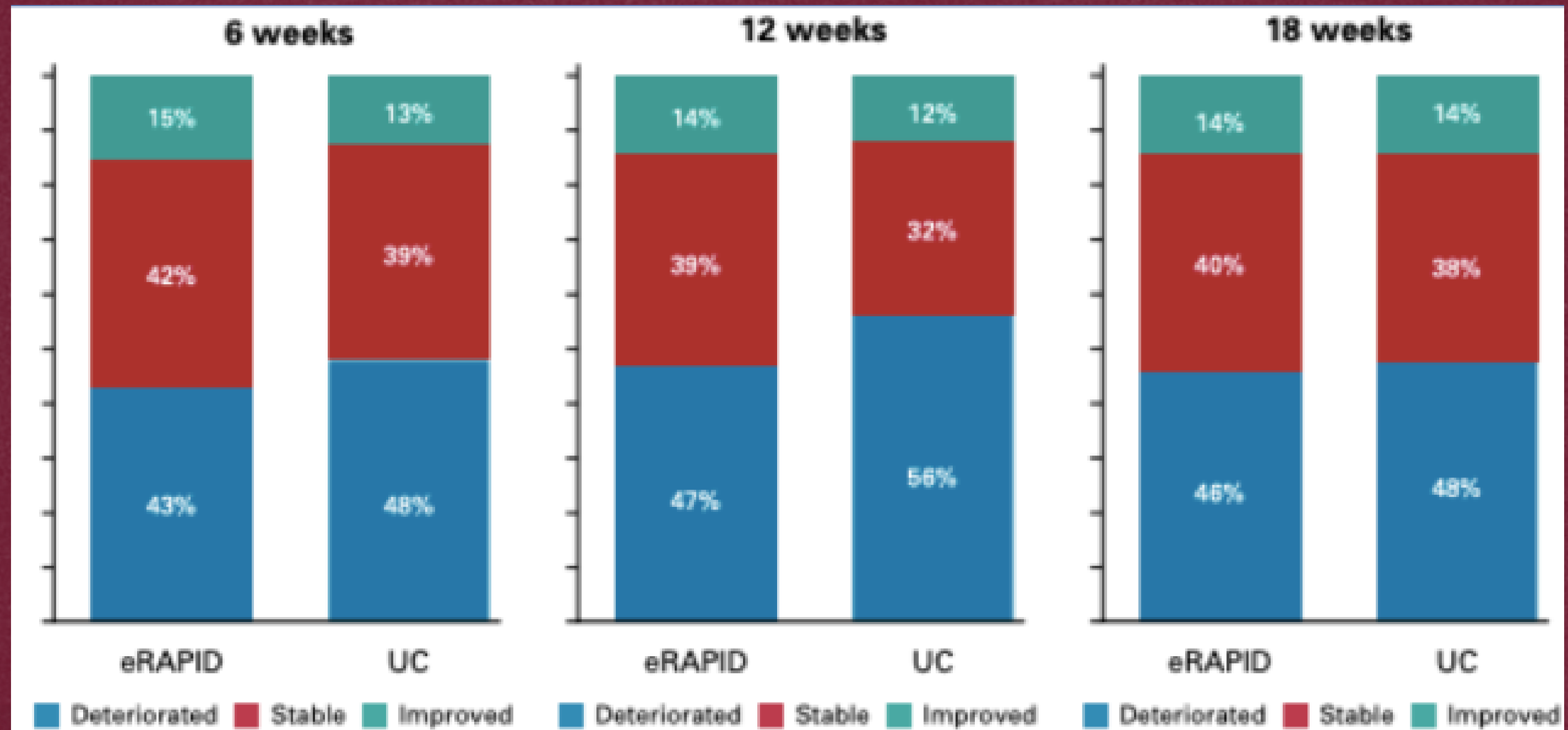
Symptom	Alerts, No. (% of reports completed) <sup>a</sup>	Symptom reported, No. (% of reports completed) <sup>a</sup>
Arthralgia and myalgia	142 (9.45)	248 (16.51)
Pain	116 (7.72)	322 (21.44)
Fatigue	80 (5.33)	600 (39.95)
Shortness of breath	64 (4.26)	114 (7.59)
Cough	48 (3.20)	121 (8.06)
Abdominal pain	39 (2.60)	134 (8.92)
Diarrhea	32 (2.13)	318 (21.17)
Fever	27 (1.80)	53 (3.53)
Dizziness	19 (1.26)	100 (6.66)
Nausea and vomiting	12 (0.80)	129 (8.59)
Dysuria	9 (0.60)	35 (2.33)
Concentration and memory issues	3 (0.20)	9 (0.60)
Palpitations	2 (0.13)	6 (0.40)
Anxiety	0	96 (6.39)
Blurry vision	0	68 (4.53)
Pruritus	0	294 (19.57)

\*Percentage based on 1502 surveys completed over 4552 patient-days.



# Phase III Randomized Controlled Trial of eRAPID: eHealth Intervention During Chemotherapy

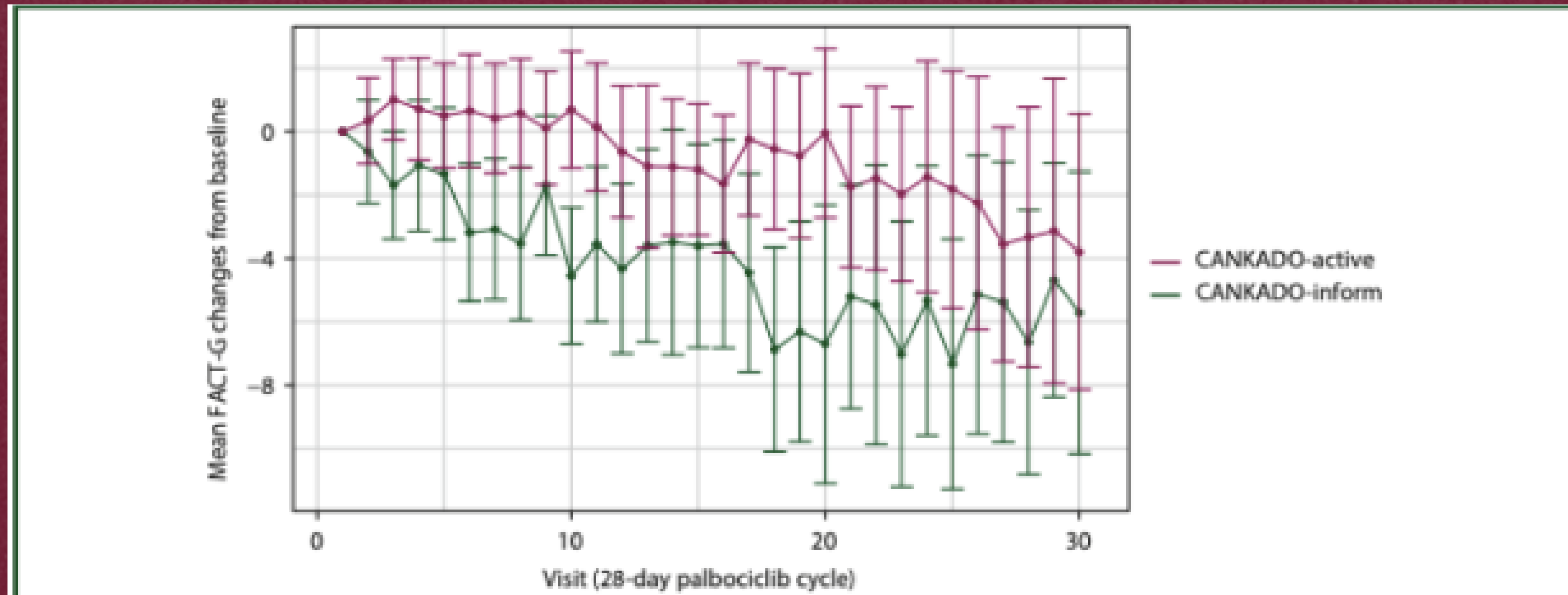
J Clin Oncol 39:734-747. 2021





Significantly longer time to deterioration of quality of life due to CANKADO PRO-React eHealth support in HRD HER2L metastatic breast cancer patients receiving palbociclib and endocrine therapy: primary outcome analysis of the multicenter randomized AGO-B WSG PreCycle trial

Ann Oncol. 2023 Aug;34(8):660-669.



**Figure 2. Mean FACT-G changes from baseline, ITT-PRO population.** Mean FACT-G changes from baseline in the ITT-PRO population with 95% error bars by normal approximation. The figure is cropped at 30 weeks due to small sample size. FACT-G, Functional Assessment of Cancer Therapy—General; ITT, intention-to-treat; PRO, patient-reported outcome.



Treatment characteristics including median relative dose intensity, postponement, interruption, and dose reduction rates were similar in the two arms









**Table 2.** Treatment characteristics by arm in the safety population (all patients who received at least one dose of palbociclib)

	CANKADO-active ( <i>n</i> = 311)	CANKADO-inform ( <i>n</i> = 161)
Median relative dose intensity (%)	96.7	93.9
Treatment postponement (%)	60.1	57.1
Treatment interruption (%)	37.1	42.2
Dose reduction (%)	41.2	47.8

Data were available for 472/479 patients in the safety population.



# Implementing a PROACTIVE Care Pathway to Empower and Support Survivors of Breast Cancer

Maria Alice Franzoi, MD<sup>1</sup> ; Lena Degousée, MD<sup>2</sup>; Elise Martin, PhD<sup>1,3</sup> ; Patricia Miguel Semedo, MD<sup>4</sup> ; Marion Aupomerol, MD<sup>2</sup> ; Davide Soldato, MD<sup>1</sup> ; Antonio Di Meglio, MD, PhD<sup>1</sup> ; Camila Chiodi, MD<sup>1</sup>; Aude Barbier, BS<sup>1</sup>; Hajer Chaouachi, BS<sup>5</sup>; Nathalie Renvoisé, BS<sup>5</sup>; Diane Boinon, PhD<sup>5</sup> ; Léonor Fasse, PhD<sup>5</sup>; Joana Ribeiro, MD<sup>2</sup> ; Jean Bernard Le-Provost, MD<sup>5</sup>; Johanna Arvis, BS<sup>1</sup>; Céline Lazorthes, BS<sup>5</sup>; Mario di Palma, MD<sup>5</sup> ; Anne de Jesus, BS<sup>7</sup>; Bruno Raynard, PhD<sup>5</sup>; Arnaud Pagès, PhD<sup>8</sup> ; Suzette Delalogue, MD<sup>2</sup> ; Barbara Pistilli, MD<sup>2</sup> ; Florian Scotté, MD<sup>5</sup>; and Ines Vaz-Luis, PhD<sup>1,2,5</sup> 

- 50% dos pacientes vivem com pelo menos um sintoma físico angustiante de longa duração
- 30% enfrentam sofrimento emocional
- 20% lutam para voltar ao local de trabalho

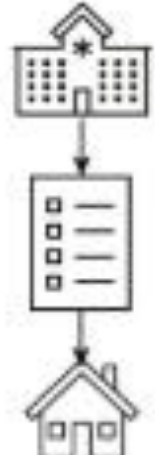


# Componentes do Pathway personalizado: Dia de Transição, aplicativo móvel e auxílios à decisão para médicos focados nas necessidades de cuidados de suporte.

### Personalized SCP

Document with information on disease characteristics, previous treatments, and follow-up recommendations (frequency of medical consultations, examinations recommended, signs of alert, long-term adjuvant treatments, lifestyle recommendations, and information on how to contact the medical and supportive care team).

Delivered to the patient and primary care physician (electronic and printed version).



### The Transition Day

Face-to-face group educational seminars on selected themes (talk followed by Q&A).


Personalized survivorship consultation for needs assessment and supportive care referrals.

Typical Transition Day Schedule	Moderated by
08h45-09h: Welcome and introductions	Oncologist
09h-09h30: Follow-up care	Oncologist
09h30-10h: Persistent side effects of treatment	Oncologist
10-11h: Endocrine therapy	Oncologist
<i>Coffee break</i>	
11h10-11h40: Physical activity	Physical therapist
11h40-12h10: Nutrition	Nutritionist
<i>Lunch</i>	
13h-13h30: Sexual health	Sexologist
13h30-14h: Psychosocial support	Psychologist
14h-14h30: Return to work	Sociologist
14h30-17h30: 30' Individual personalized consultation/digital navigation on the mobile app	Oncologist/sociologist

### Mobile app

A mobile app delivering personalized survivorship education, empowerment, and self-management advice.

4-level functionalities: measure (PRO-CTCAE), understand (information of 52 symptoms and 29 concerns), appease (information on 12 supportive care services), and explore (peer testimonials).

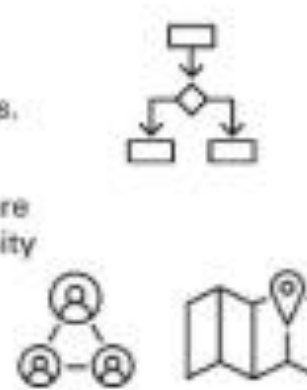


Resilience Care®

### Symptom management decision aids

Evidence-based symptom management decision aids for physicians on main treatment-related toxicities and concerns.

Mapping and processes for supportive care referrals in an institutional and community level.



A navegação digital no aplicativo móvel é oferecida durante o Dia da Transição.



# Resultados

- 98 (30%) pacientes compareceram ao Dia de Transição.

Os motivos rastreados para recusas em participar do Dia de Transição :

- falta de interesse (56%)
- restrições de distância (21%)



**TABLE 2. Pathway Experience Survey****Patient Pathway Experience (n = 77/126)**

SCP (70% received)	Transition Day (52% attended)	Mobile Application (59.7% accessed)
Easy to read and understand (80%) Useful (64.8%)	Easy to understand (92.5%) Duration was just fine (62.5%) Useful (90%)	Easy to use and understand (74%) Useful (65.2%)

Satisfied with the full pathway experience (n = 26): 96.1%

**Physician Pathway Experience (n = 14/27)**

SCP	Symptom Management Decision Aids	Transition Day	Mobile Application
Important and useful (92.8%)	Important and useful (85.7%)	Important and useful (92.8%)	Important and useful (85.7%)

Perceived a positive impact in clinical care after pathway implementation: 78.5%

**Organization Pathway Experience (n = 13/17)**

Satisfaction With the Work Performed	Team Behavior Spirit	Adjustments to the General Routine	Engagement
Felt that their work is valued by patients (100%) Felt that their work is valued by the institution (69.2%)	Felt that the work in the pathway is a team effort (100%)	Comfortable performing their work in the pathway (100%) Increased workload and disturbed routine (46.1%)	Count on continuing their activities in the pathway (84.6%) Would like to be involved in additional pathway activities (61.5%)

NOTE. Percentages in the parentheses represent the proportion of responders who agreed or completely agreed.

Abbreviation: SCP, Survivorship Care Plan.



Supportive Care in Cancer (2020) 28:4589–4612

<https://doi.org/10.1007/s00520-020-05539-1>

REVIEW ARTICLE

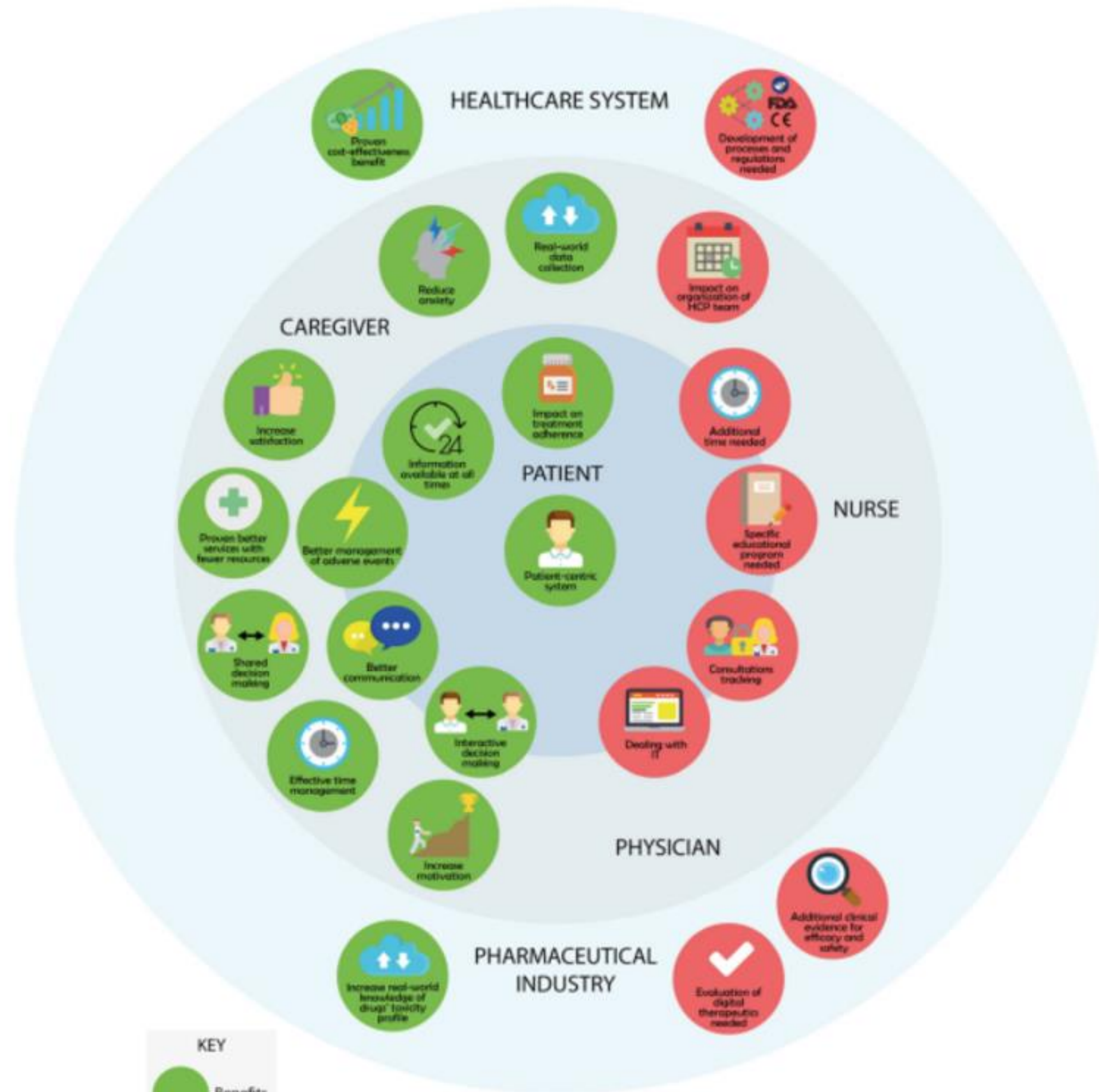


# Digital health for optimal supportive care in oncology: benefits, limits, and future perspectives

M. Aapro<sup>1,2</sup> · P. Bossi<sup>3</sup> · A. Dasari<sup>4</sup> · L. Fallowfield<sup>5</sup> · P. Gascón<sup>6</sup> · M. Geller<sup>7</sup> · K. Jordan<sup>8</sup> · J. Kim<sup>9</sup> · K. Martin<sup>10</sup> · S. Porzig<sup>11</sup>

*Amm*  
ALESSANDRA  
MENEZES MORELLE





**KEY**  
● Benefits



# Electronic Health Interventions for Patients With Breast Cancer: Systematic Review and Meta-Analyses

Anna C. Singleton, PhD<sup>1</sup>; Rebecca Raeside, MPH<sup>1</sup>; Karice K. Hyun, PhD<sup>1,2</sup>; Stephanie R. Partridge, PhD<sup>1,3</sup>; Gian Luca Di Tanna, PhD<sup>4</sup>; Nashid Hafiz, MPH<sup>1</sup>; Qiang Tu, PhD<sup>1</sup>; Justin Tat-Ko, BMSc<sup>1</sup>; Stephanie Che Mun Sum, BMSc<sup>1</sup>; Kerry A. Sherman, PhD<sup>5</sup>; Elisabeth Elder, MBBS, PhD<sup>6,7</sup>; and Julie Redfern, PhD<sup>1,4</sup>



## A experiência relatada pelo paciente mede a aceitabilidade

Nove estudos (34,6%) avaliaram a aceitabilidade percebida da intervenção pelos participantes.

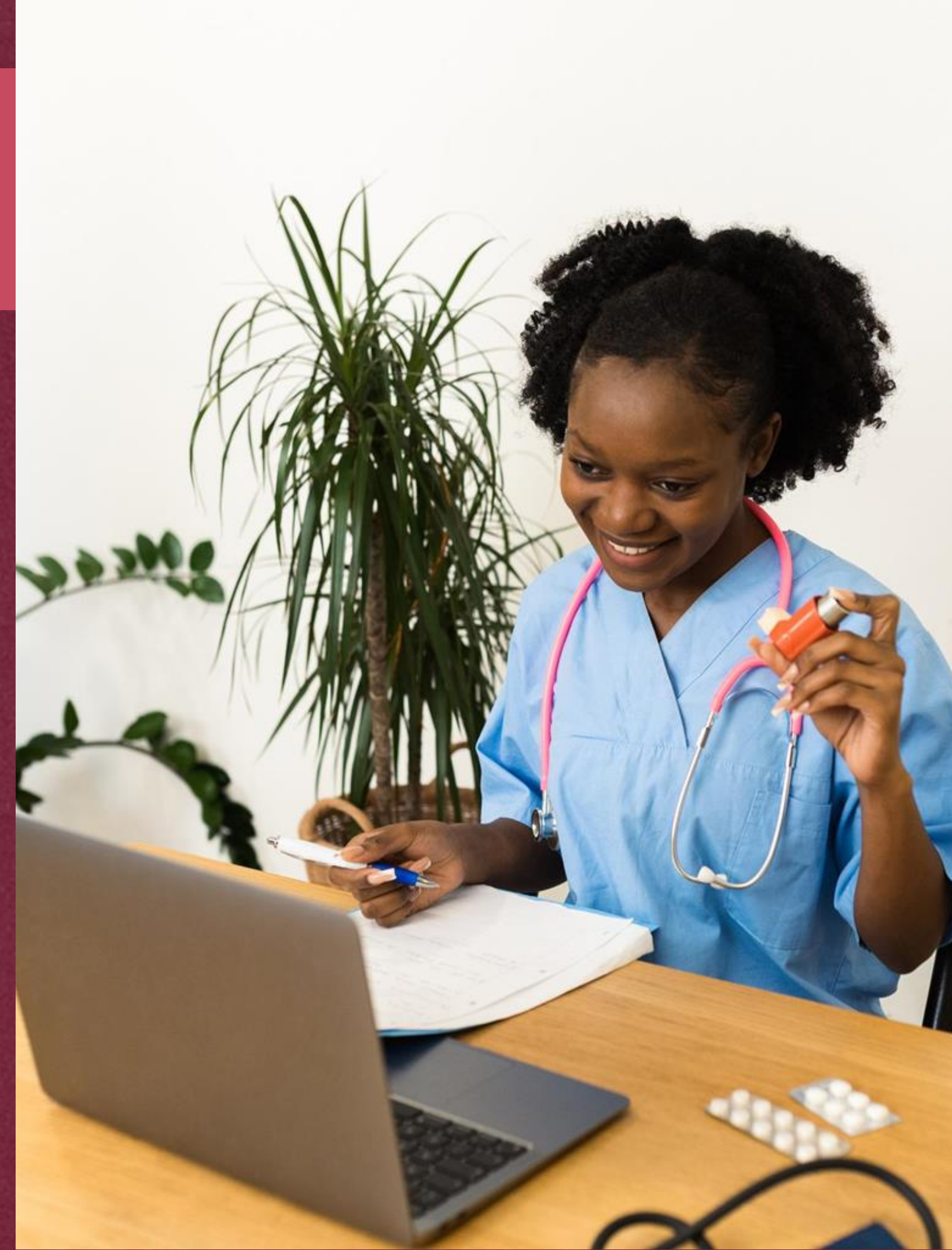
A maioria dos participantes considerou os sites **psicoeducacionais aceitáveis**, úteis, fáceis de usar (73%-92%) e fáceis de entender (98%-100%).





## A experiência relatada pelo paciente mede a aceitabilidade

Um estudo relatou que os participantes consideraram o **conteúdo escrito e de vídeo mais útil do que as atividades psicoeducacionais** (76%, 69% e 49%, respectivamente) e os participantes de um programa de **exercícios baseado na web consideraram os vídeos valiosos** (classificação média: 3.8/4; 95%).





# Engajamento

Vinte e cinco estudos (78,1%) avaliaram o **envolvimento dos participantes na intervenção** (logins, módulos concluídos e rastreamento de uso).

O envolvimento dos participantes foi amplo, completando módulos de 0% a 100%.

A **maioria dos participantes** (61%-100%) se envolveu com a intervenção  $\geq 1$  vez (login e módulo aberto).





# Engajamento

No entanto, nove estudos relataram uma **queda no envolvimento ao longo do tempo;**

Para sites, os participantes se envolveram mais com **conteúdo** sobre como conviver com efeitos colaterais, estratégias de enfrentamento, vida saudável, conselhos, blogs e fóruns de discussão

J Clin Oncol 40:2257-2270. © 2022 by American Society of Clinical Oncology





# Engajamento

Um estudo descobriu que o envolvimento dos participantes com e-mails era consistentemente alto;

35/37 participantes (94,6%) engajaram-se desde o início até 3 meses.

Um jogo de aplicativo baseado em avatar encontrou missões, subidas de nível e recompensas mais envolventes.

J Clin Oncol 40:2257-2270. © 2022 by American Society of Clinical Oncology





# Brasil e América Latina

- 70% da população – uso de telefone celular
- 343 milhões de usuários de internet = taxa de penetração de 55%
- Oportunidade: mHealth e eHealth

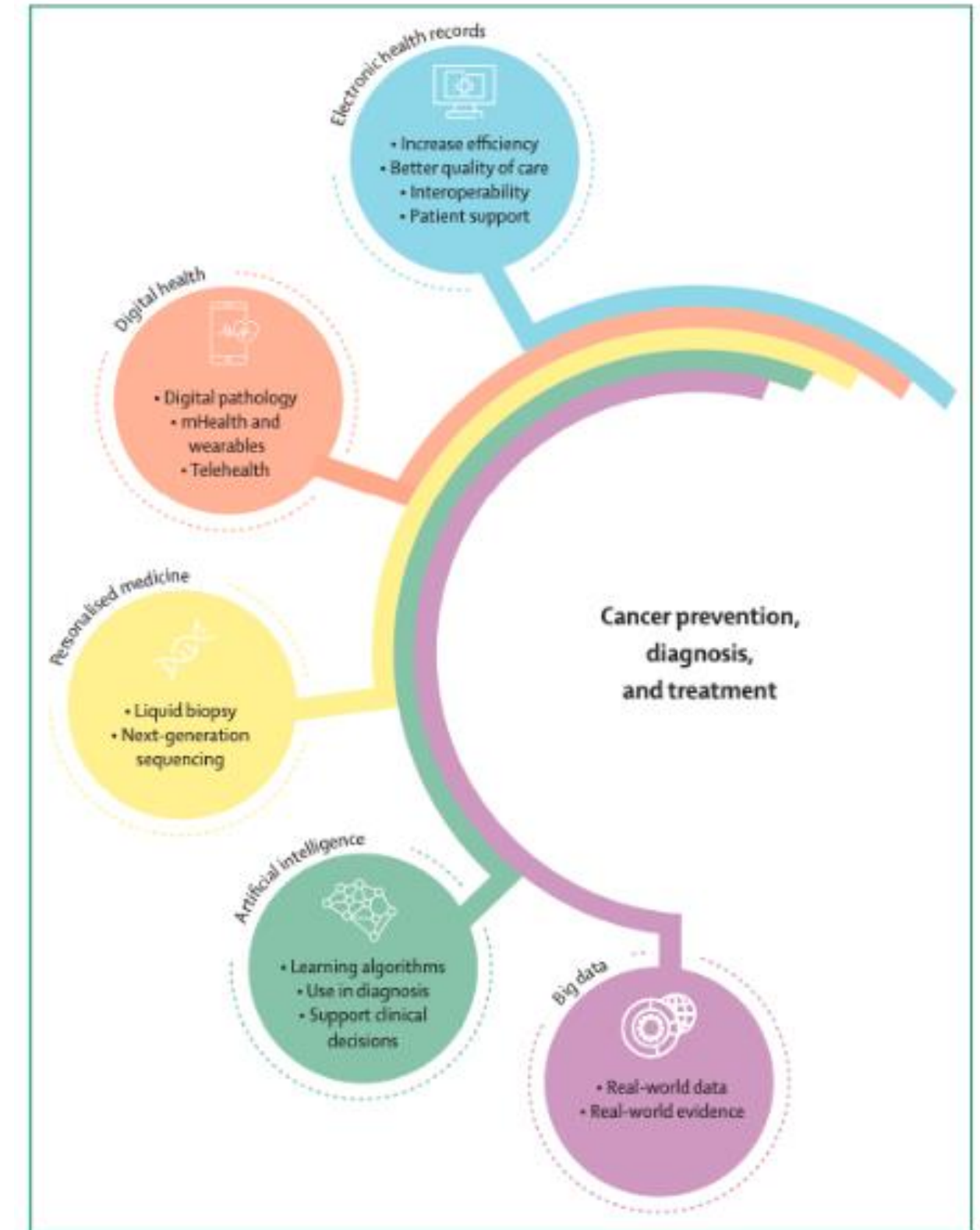


Figure 1: Emerging technologies for the prevention, diagnosis, and treatment of cancer in Latin America and the Caribbean  
mHealth=mobile health.



# ASSESSING QUALITY OF LIFE IN BREAST CANCER PATIENTS UNDERGOING MHEALTH MOBILE MONITORING: A DESCRIPTIVE ANALYSIS

Alessandra Menezes Morelle<sup>1</sup>, Carlos Eurico Pereira<sup>1</sup>, Matheus Soares Rocha<sup>1</sup>, Paulo Alfredo Casanova Schulze<sup>1</sup>, Pedhro Lennon Cezário de Freitas<sup>1</sup>, Vinicius Agibert de Souza<sup>2</sup>, Carlos Henrique Barrios<sup>1</sup>.

1. Thummi Global, Porto Alegre, Brazil; 2. Centro de Terapia Oncológica (CTO) and LaVÍ Clinical Trials, Rio de Janeiro, Brazil.

Presenting Author: Alessandra Menezes Morelle - [alessandra@thummi.global](mailto:alessandra@thummi.global)

## BACKGROUND

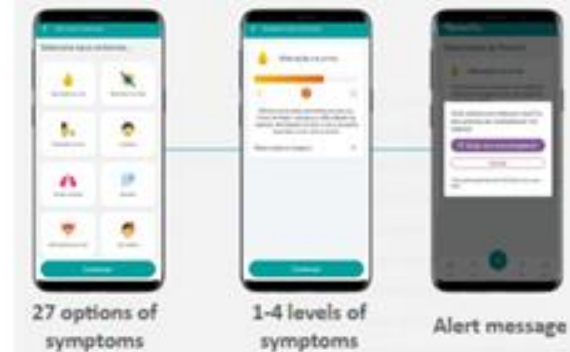
Breast cancer (BC) can be associated with a significant symptom burden that can be related both to the disease and to administered therapies. In particular, protocol related toxicity has an extreme impact on patient quality of life (QoL). There is increasing interest in adopting more effective approaches for active/continuous patient-reported symptom monitoring. Emerging evidence, (Denis et al. 2019), shows that this strategy can reduce toxicity, emergency room visits, and improve QoL.

## OBJECTIVES

We aimed to analyze the QoL of women with BC diagnosis who underwent mobile-based continuous monitoring, searching for possible trends and describing the population.

## METHODS

- **STUDY DESIGN:** RETROSPECTIVE ANALYSIS
- **Population:** breast cancer patients undergoing systemic treatment in Brazil
- **Non-pharmacological intervention:** Thummi, a mobile-based application
- **Period:** January 2022 - June 2023
- **Inclusion criteria:** BC diagnosis, age ≥18, and having responded to the QoL questionnaire with at least a one-month interval between scores



Participants were requested to complete the Quality of Life Questionnaire (EORTC EQ-5D) integrated into the app every month. A comparison of QoL scores was performed between two periods: T0 (the first recorded response) and T1 (the subsequent response with at least a one-month interval between scores). Descriptive statistical analyses were conducted to search for possible trends, describe the population, and comprehensively examine the differences in QoL scores between T0 and T1.

## RESULTS



134 active patients in the mobile-based platform with a BC diagnosis

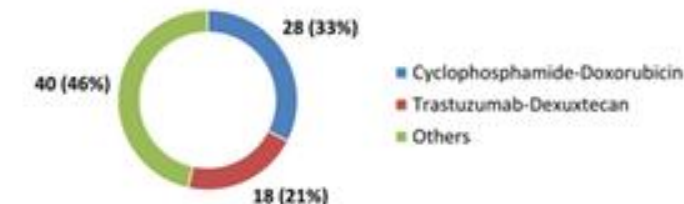


86 (64,17%) patients met inclusion criteria

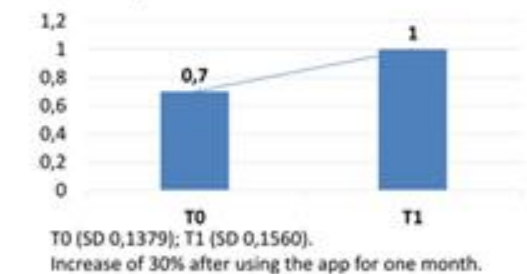


median age: 54 years old (range 22-78)

### Pharmacological Treatment



### Quality of Life Score



## CONCLUSIONS

- The difference in average QoL scores between the initial and subsequent periods indicates a positive impact of utilizing the platform. Implementing mobile-based monitoring in clinical practice could enhance patient well-being, treatment adherence, and survival time and can potentially lessen both burden of disease and resource utilization in BC care.
- This study suggests that mobile-based monitoring has the potential to improve the QoL for women diagnosed with BC.



# Desafios e limitações do monitoramento digital em pacientes oncológicos

## Privacidade dos dados e segurança da informação

O monitoramento digital gera uma grande quantidade de informações sobre o paciente, o que levanta questões sobre a proteção de dados e a segurança.

## Adesão do paciente e uso correto das tecnologias

Muitos pacientes podem ter dificuldade em usar o dispositivo de monitoramento ou em compreender as informações fornecidas, o que pode levar a erros ou a uma falta de adesão ao tratamento.

## Limitações tecnológicas e financeiras

Alguns pacientes podem não ter acesso a dispositivos de monitoramento digital, ou enfrentar barreiras financeiras para a obtenção desses dispositivos.



# Considerações finais e recomendações

## Integração na prática clínica

Uma das principais recomendações é a importância de integrar o monitoramento digital na prática clínica, permitindo que as informações do paciente sejam acessadas pelos diferentes profissionais de saúde.

## Mais pesquisa é necessária

Mais pesquisas são necessárias para entender o impacto do monitoramento digital de longo prazo na qualidade de vida do paciente e nos resultados do tratamento.



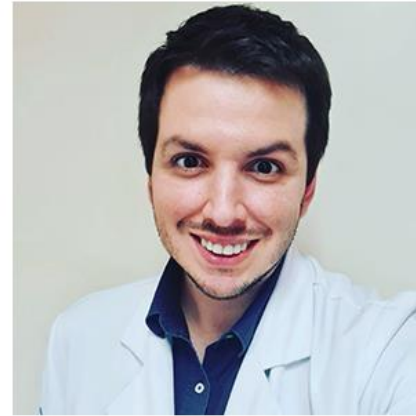
LACOG | Digital Cancer Group  
Board



**Dr. Alessandra Menezes Morelle**  
Chair  
Oncoclínicas  
Porto Alegre, Brazil



**Dr. Nivaldo Vieira**  
Vice-Chair  
Clínica AMO  
Salvador, Brazil



**Dr. Vinicius Agibert de Souza**  
Secretary  
CTO – Centro de Terapia Oncológica  
Petrópolis, Brazil

**Steering Committee**

**Brazil**

Dr. Bruno Wance  
DASA  
Distrito Federal

Dr. Graziela Dal Molin  
A Beneficência Portuguesa de SP  
São Paulo

Dr. Thiago Jorge  
Hospital Alemão Oswaldo Cruz  
São Paulo

**França**

Dr. Maria Alice Franzoi  
Gustave Roussy  
Villejuif

LACOG | Digital Oncology Group

Learn more about the  
LACOG Digital Group

Learn more >

*Amm*  
ALESSANDRA  
MENEZES MORELLE



Obrigada!

*Amm*  
ALESSANDRA  
MENEZES MORELLE