



GLORY New 580 Product Overview



Contents

C O N T E N T S

01

Vehicle
information

02

Function
configuration

03

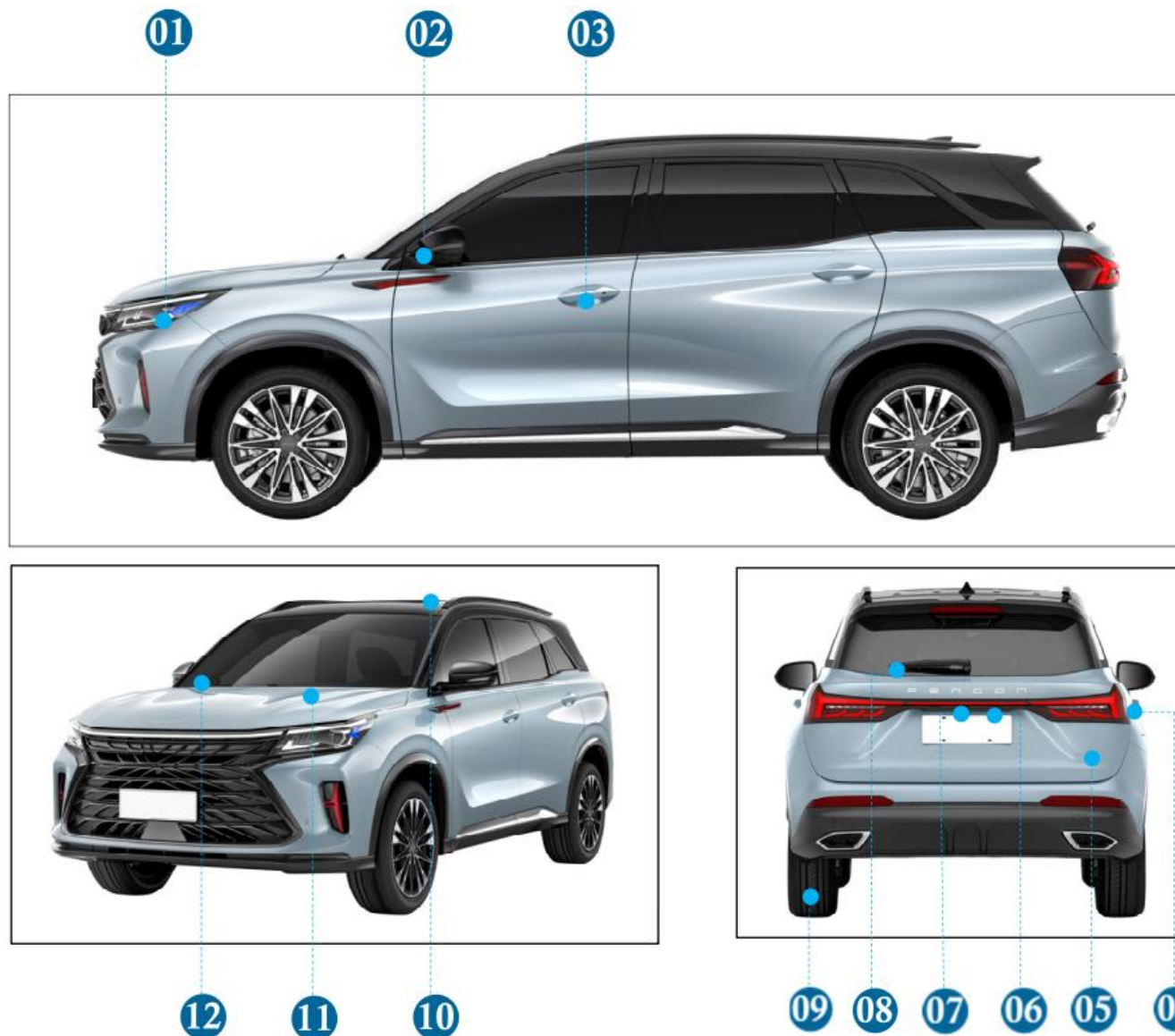
General
function
operation



1. Vehicle Information

1. Vehicle external information

- ①Exterior lights
- ②Exterior rearview mirror
- ③Front door exterior handle
- ④Filler cap
- ⑤Back door
- ⑥Back door opening switch
- ⑦Rear view camera
- ⑧Rear wiper
- ⑨Wheels and tires
- ⑩Sunroof
- ⑪Front cover
- ⑫Front wiper

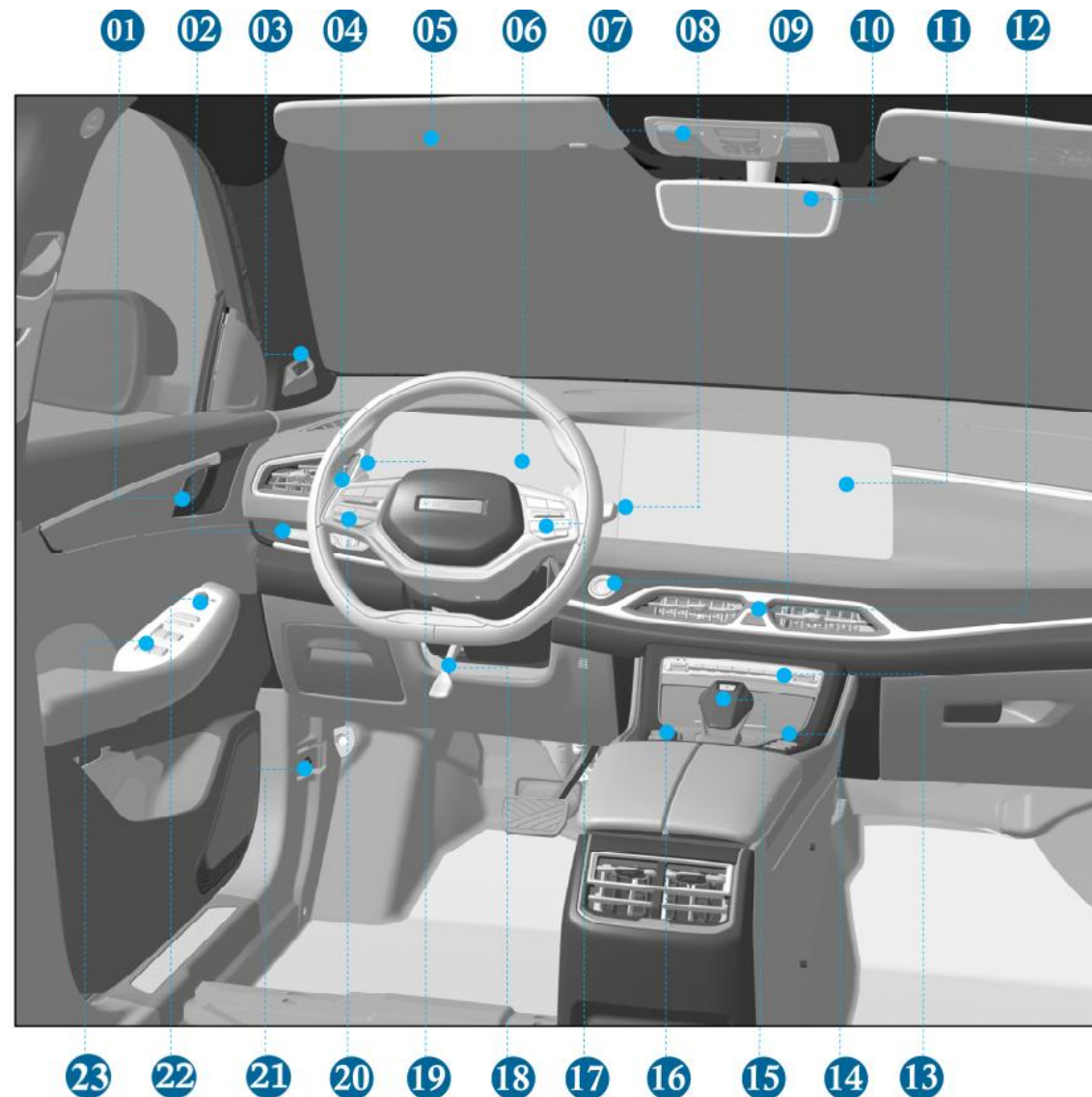


1. Vehicle Information



2. Vehicle interior information

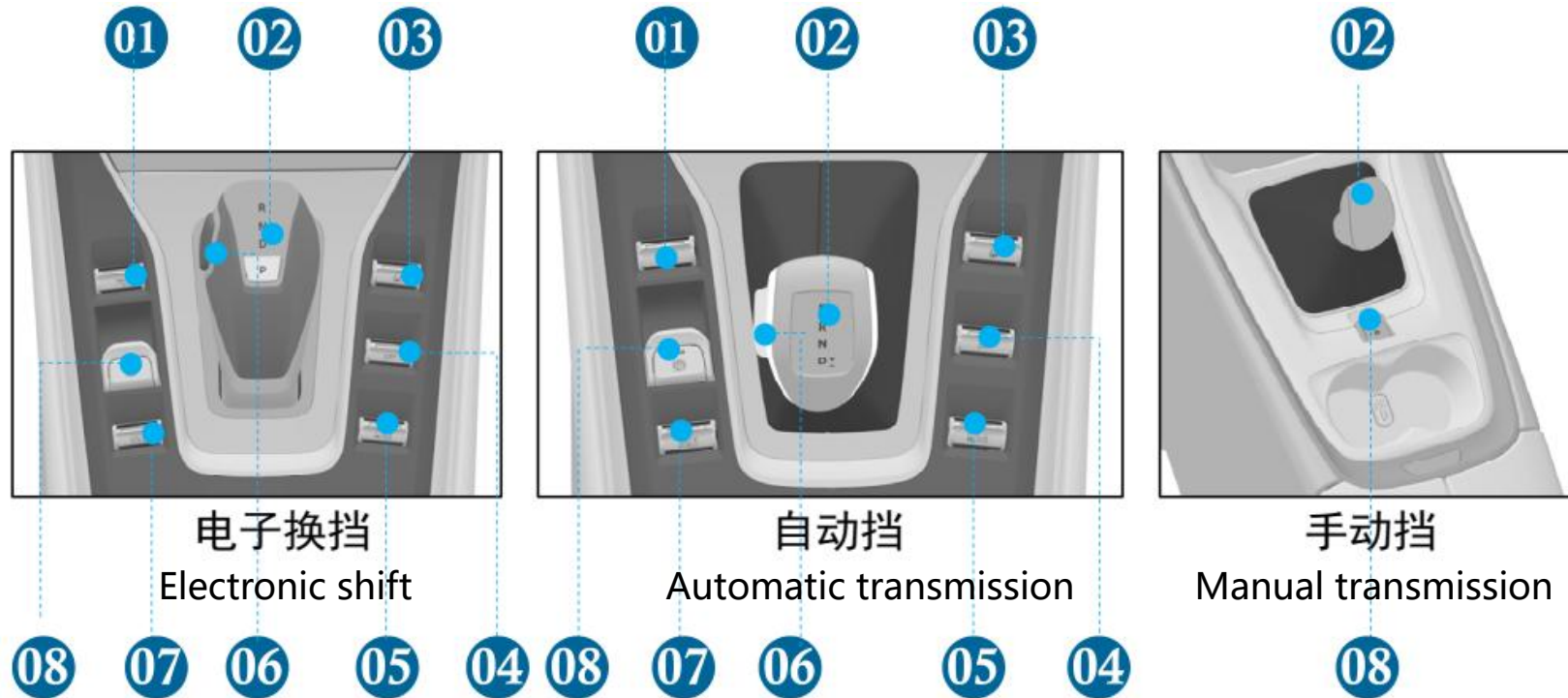
- | | |
|---------------------------|-------------------------------------|
| ①Door opening handle | ⑬ Air conditioning control panel |
| ②Small switch | ⑭ Shift panel right switch |
| ③Face recognition | ⑮ Shift handle |
| ④Light combination switch | ⑯ Shift panel left switch |
| ⑤Sun visor | ⑰ Steering wheel button / right |
| ⑥Combination instrument | ⑱ Steering column adjuster |
| ⑦Front reading lamp | ⑲ Paddle |
| ⑧Wiper switch | ⑳ Steering wheel button/left |
| ⑨One-key start switch | ㉑ Engine hood cable handle |
| ⑩Interior rearview mirror | ㉒ Exterior mirror adjustment switch |
| ⑪Touch screen | ㉓ Power window switch |
| ⑫Hazard alarm switch | |



1. Vehicle Information



2. Vehicle interior information



- ① Front radar switch button ② shift handle ③ ESC function switch button ④ Hill Descent function button ⑤ driving mode switching
⑥ Shift handle unlocking button ⑦ Auto hold switch button (AUTO HOLD) ⑧ Electric park brake (EPB) switch

1. Vehicle Information



3. Technical specifications of the vehicle

3.1 Engine

Item	Engine No.: HD15M1A(6MT)	Engine model: HD15M1A(6AT)
Form	In line four cylinder four stroke, double overhead camshaft, 16 valve, in cylinder direct injection, center mounted dual VVT, turbocharging, integrated exhaust cylinder head	
Cylinder bore × Stroke (mm)	73.5×88	
Total displacement (L)	1.499	
Compression ratio	11:1	
Maximum net power (kw)	130/5500	
Maximum torque (n · m)	300/1600~4000	
Idle speed (rpm)	750±50	
Mass (kg) (with transmission)	202.6 (SMF626) (with transmission)	234.6 (A6F30) (with transmission)
Fuel	车用 92#或 92#以上无铅汽油 (GB17930)	
Comprehensive fuel consumption per 100 km (L)	6.8	7.3
Emission standard	China VIb	

1. Vehicle Information



3.2 Technical performance of the vehicle

Item	Engine model: HD15M1A(6MT)	Engine model: HD15M1A(6AT)
Maximum speed (km / h)	185	
Maximum climbing gradient (%)	≤40	
Minimum turning diameter (m)	11.8	

3.3 Engine ignition system parameters

Item	Engine model: HD15M1A(6MT)	Engine model: HD15M1A(6AT)
Ignition form	Electronic control, multi-point, sequential injection	
Ignition sequence	1-3-4-2	
Spark plug manufacturer and specification	ZR5SII 3320 Bosch auto parts (Nanjing) Co., Ltd. / Zhuzhou Xiang torch spark plug Co., Ltd	
Spark plug gap (mm)	0.7-0.8	

3.4 Engine fuel supply system parameters

Item	Engine model: HD15M1A(6MT)	Engine model: HD15M1A(6AT)
Fuel injection mode	Electronic fuel injection	
Oil pump type	Electronic fuel pump	
Fuel capacity (L)	58	

1. Vehicle Information



3.5Engine lubrication system parameters

Item	Engine model: HD15M1A(6MT)	Engine model: HD15M1A(6AT)
Lubrication method	Pressure and splash combination	
Oil pump type	Rotor type	
Oil filter type	Paper filter element	
Oil capacity (including filter) (L)	5±0.1	

3.6Engine cooling system parameters

Item	Engine model: HD15M1A(6MT)	Engine model: HD15M1A(6AT)
Cooling mode	Forced circulating water cooling	
Pump type	Centrifugal	
Coolant capacity (L)	6.5±0.1	

1. Vehicle Information



3.7Transmission parameters

Item		Engine modelHD15M1A(6MT)	Engine model: HD15M1A(6AT)
model		SMF626	A6F30
type		Six gear manual	6AT transmission
Speed ratio	First gear	3.727	4.639
	Second gear	2.045	2.826
	Third gear	1.393	1.841
	Fourth gear	0.975	1.386
	Fifth gear	0.761	1.000
	Sixth gear	0.646	0.772
	Reverse gear	3.545	3.385
Final drive ratio		4.188	3.195

1. Vehicle Information



3.8Clutch parameters

Item	Engine model: HD15M1A(6MT)	Engine modelHD15M1A(6AT)
Type	Dry diaphragm spring	Hydraulic torque converter
Outer diameter (mm)	240	

3.9Braking system parameters

Item	Engine model: HD15M1A(6MT)	Engine model: HD15M1A(6AT)
Master cylinder diameter × stroke (mm)	22.22×36	
Booster ratio	9.5	
Front brake type	Disc brake	
Diameter of front brake disc (mm)	300	
Diameter of front split cylinder (mm)	57.15	
Rear brake type	Disc brake	
Rear brake disc diameter (mm)	298	
Rear split cylinder diameter (mm)	38	
Brake fluid parameters / capacity (L)	DOT3/DOT4 (specifically based on the logo of the booster oil pot), the filling amount is 0.7±0.05	

1. Vehicle Information



3.10Steering system parameters

Item	power steering
Steering gear type	Rack and pinion mechanical steering gear
Angular transmission ratio	17.1
Stroke (mm)	136
Wheel alignment parameters	
Front wheel toe angle	$0.08^{\circ}\pm0.08^{\circ}$
Front wheel camber	$-0.5^{\circ}\pm0.5^{\circ}$
Kingpin inclination	$14.4^{\circ}\pm0.5^{\circ}$
Kingpin caster	$3.4^{\circ}\pm0.5^{\circ}$
Rear wheel camber	$-1^{\circ}\pm0.25^{\circ}$
Toe in angle of single rear wheel	$0.08^{\circ}\pm0.08$

1. Vehicle Information



3.11 Suspension system parameters

Item	Engine model: HD15M1A(6MT)	Engine model: HD15M1A(6AT)
Front suspension type	McPherson independent suspension	
Rear suspension type	Multi link independent suspension	

3.12 Wheel and tire parameters

Wheel specifications	17×7J ET40 18×7.5J ET40 19×7.5J ET40	
Tire specification	225/60 R17 225/55 R18 235/50 R19	
Tire pressure (kPa) (cold)	front wheel	230 (no load) /230 (full load)
	rear wheel	230 (no load) /230 (full load)

1. Vehicle Information



3.13Electrical system parameters

Item	Engine model: HD15M1A(6MT)	Engine model: HD15M1A(6AT)
Battery: (V/Ah)		12/65
electric generator: (V/A)		14/150
Starter: (V/kW)		12/1.2

3.14Vehicle dimension parameters

Item	Engine model: HD15M1A(6MT)	Engine model: HD15M1A(6AT)
Overall dimension	Overall length: (mm)	4720
	Overall width: (mm)	1865
	Overall height: (mm)	1710
	Wheelbase: (mm)	2785
	Track width: front / rear (mm)	1585/1580
	Suspension length: front / rear (mm)	945/990
	Approach angle: (°)	20° /18.9°(no load / full load)
	Overall width: (mm)	23° /17.4°(no load / full load)
	Overall width: (mm)	140(full load)

1. Vehicle Information



3.15 Vehicle weight parameters

Item	Engine model: HD15M1A(6MT)	Engine model: HD15M1A(6AT)
Curb weight of vehicle: (kg)	1545	1590
Curb front axle load: (kg)	854	882
Curb rear axle load: (kg)	691	708
Full load mass of the vehicle: (kg)	2120	2165
Full front axle load: (kg)	1003	1022
Full load rear axle load: (kg)	1117	1143
Number of passengers:	5, 6, 7	

1. Vehicle Information



3.16 Recommended oil parameters

Item	Specifications	Fill amount
Fuel	High quality gasoline for vehicles above 92#	58L
Engine oil	SP or above 0W-20	The first filling amount is 4.5L, and the later replacement filling amount is 4L
SM626 transmission gear oil	GL-4 75W/90	(2.0±0.1)L
A6F30 transmission gear oil	SK ATF SP-IVM	The first filling amount is 8.3 ± 0.1L, and the maintenance filling amount is 5L
Engine coolant	FD-20 (general situation) FD-40 (extremely cold regions)	(6.5±0.1)L
Windshield washer fluid	-No. 20 (general) - No. 35 (high cold area in winter)	(2.5±0.2)L
Brake fluid	DOT3/DOT4 (the details shall be subject to the identification of booster oil pot)	(0.58±0.03) L
Air conditioning refrigerant	R134a	The filling amount of the air conditioner of the whole vehicle is: (530 ± 20) g/ vehicle

1. Vehicle Information



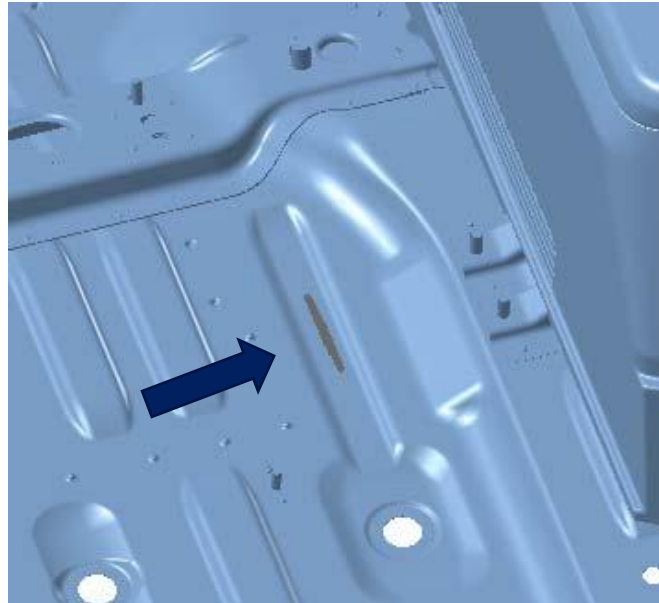
4. vehicle identification code and location

The vehicle identification number (VIN) is a legal identifier, and there are eleven VIN plates, as follows:

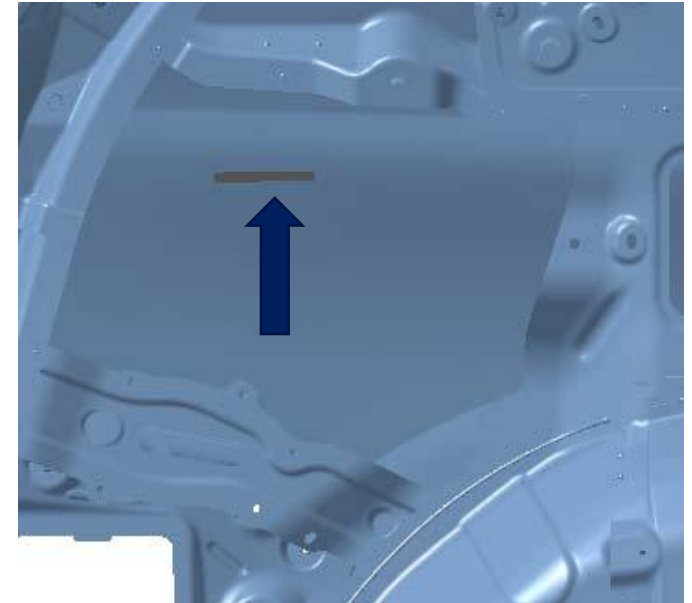
On the left front side of the dashboard



On rear floor



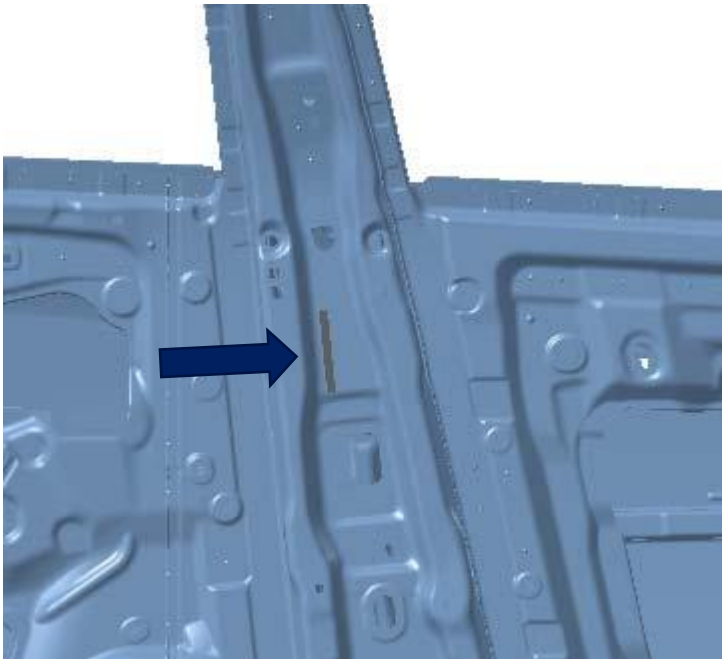
On rear left side wall outer cover



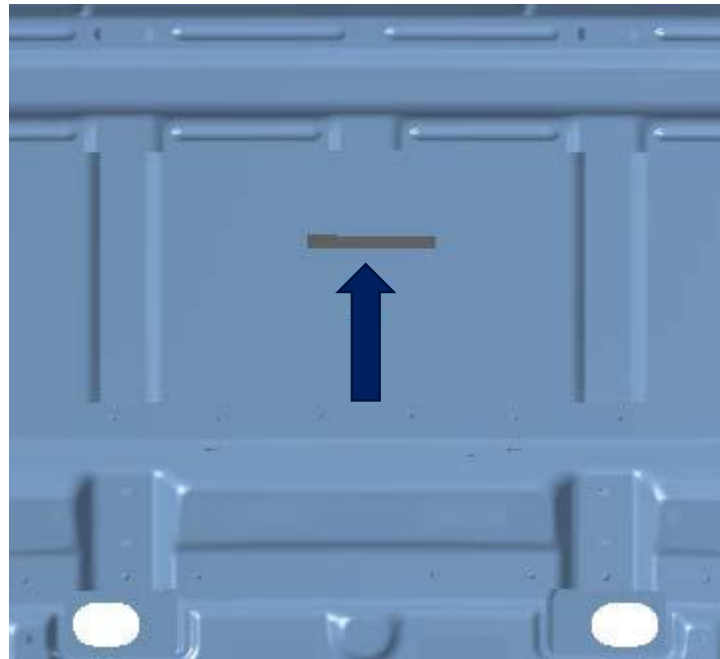
1. Vehicle Information



On left B pillar



On cover



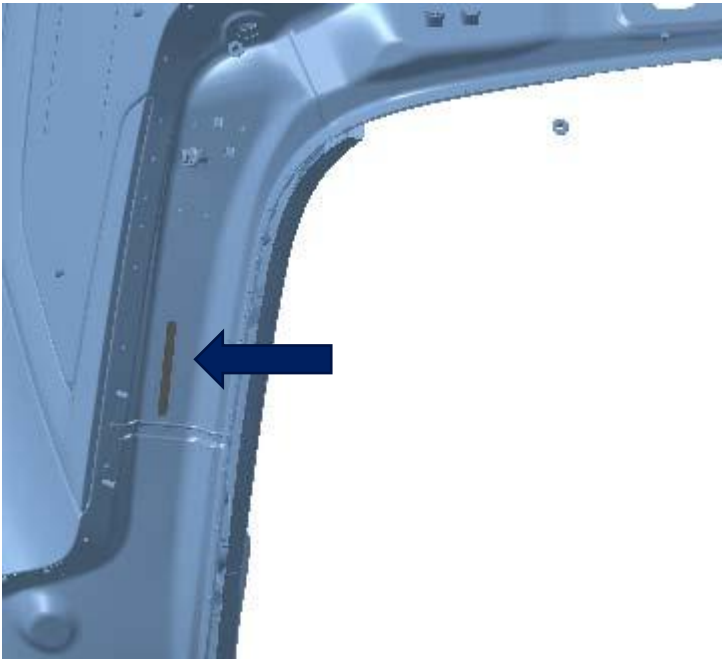
On rear door



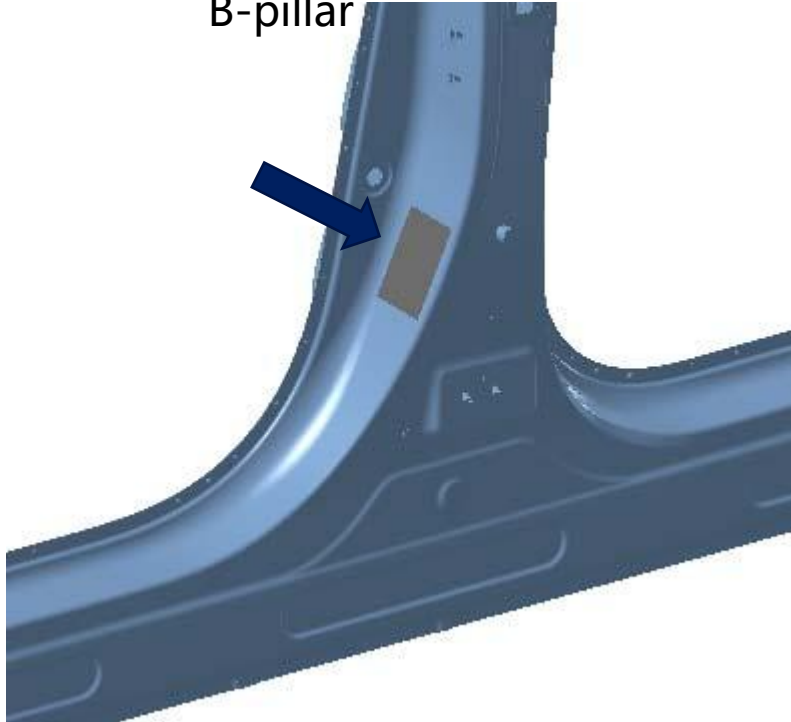
1. Vehicle Information



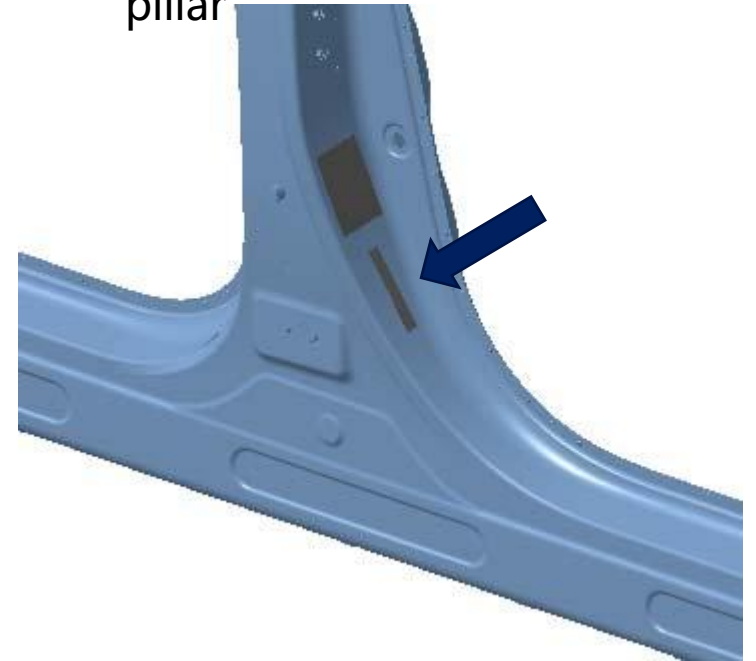
On back door frame



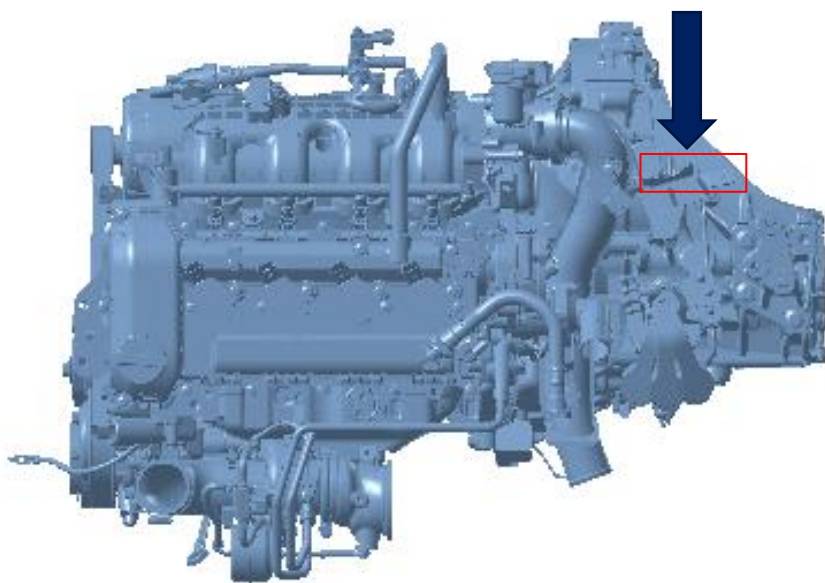
On lower side of left B-pillar



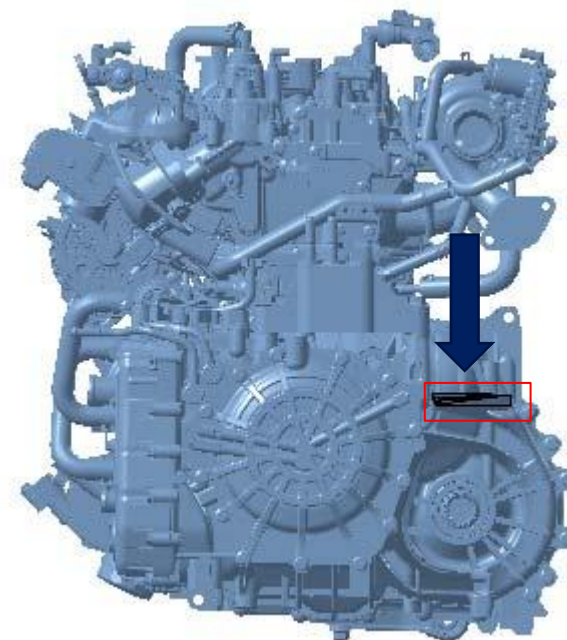
On the lower position of right B-pillar



Gearbox (HD15M1A+SMF626)



Transmission (HD15M1A+A6F30)



2、 Vehicle configuration function

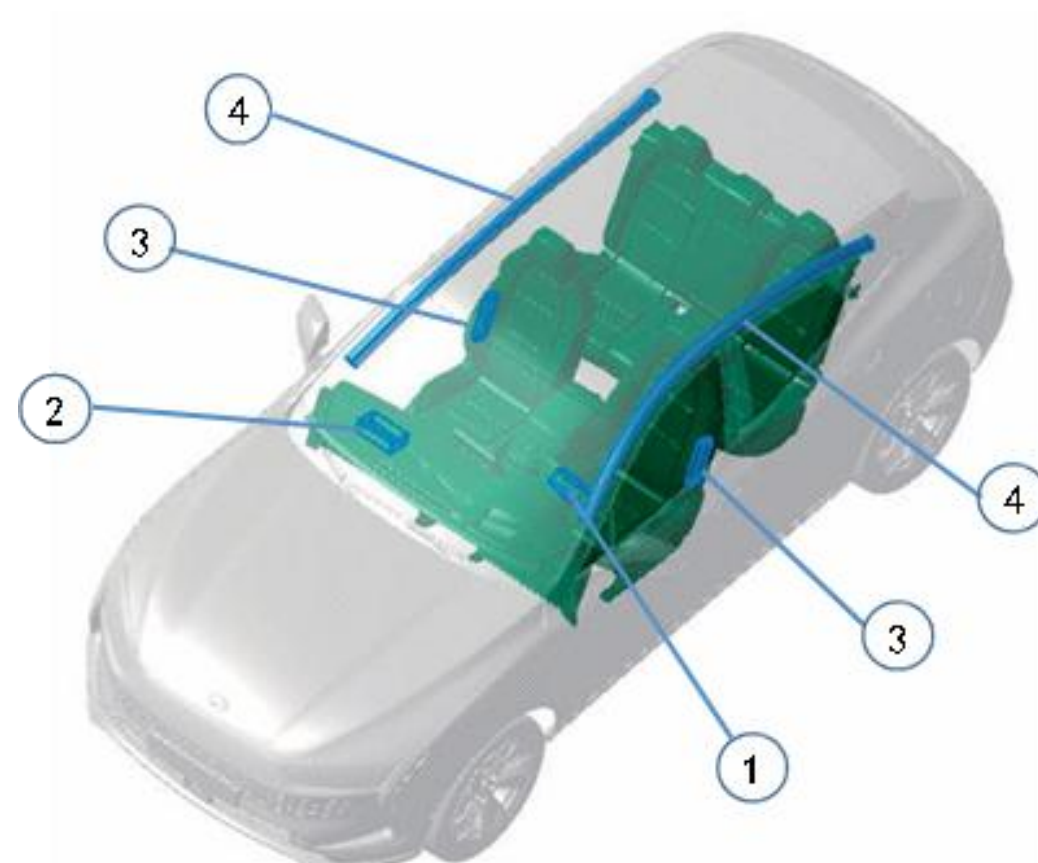
2.1 Vehicle airbag

□ Vehicle airbag type

Front airbag Frontal airbags protect the head and chest of the driver/passenger from direct impact on the steering wheel/dashboard. The frontal airbags will only inflate in a severe frontal collision.

Side airbag The side airbags protect the thorax and pelvis of the human torso. The side airbags will only inflate if there is a severe side impact. The side airbags on the non-impact side will not inflate.

Curtain airbag Curtain airbags help protect the head; they inflate whenever there is a severe side impact or the vehicle rolls over. The curtain airbag on the non-impact side will not inflate.



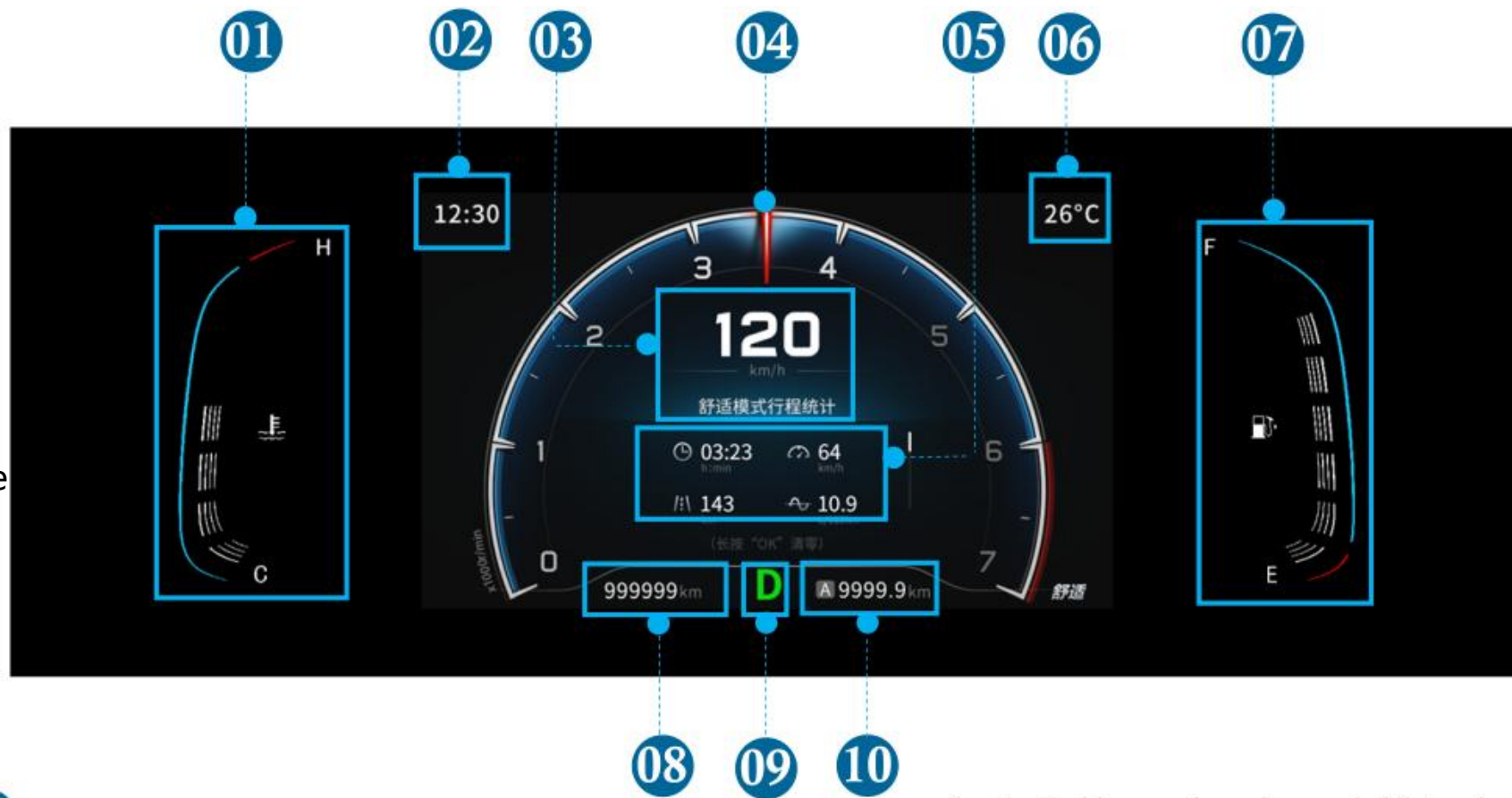
① Driver front airbag ; ② Passenger front airbag ; ③ Side airbag ;
④ Curtain airbag (not available for some models, optional)

2、 Vehicle configuration function



2.2 Intelligent instrument

- ① Water temperature gauge
- ② Time display
- ③ Speed display
- ④ Tachometer
- ⑤ Trip computer
- ⑥ External temperature display
- ⑦ Fuel gauge
- ⑧ Total mileage display
- ⑨ Driving gear display
- ⑩ Subtotal mileage

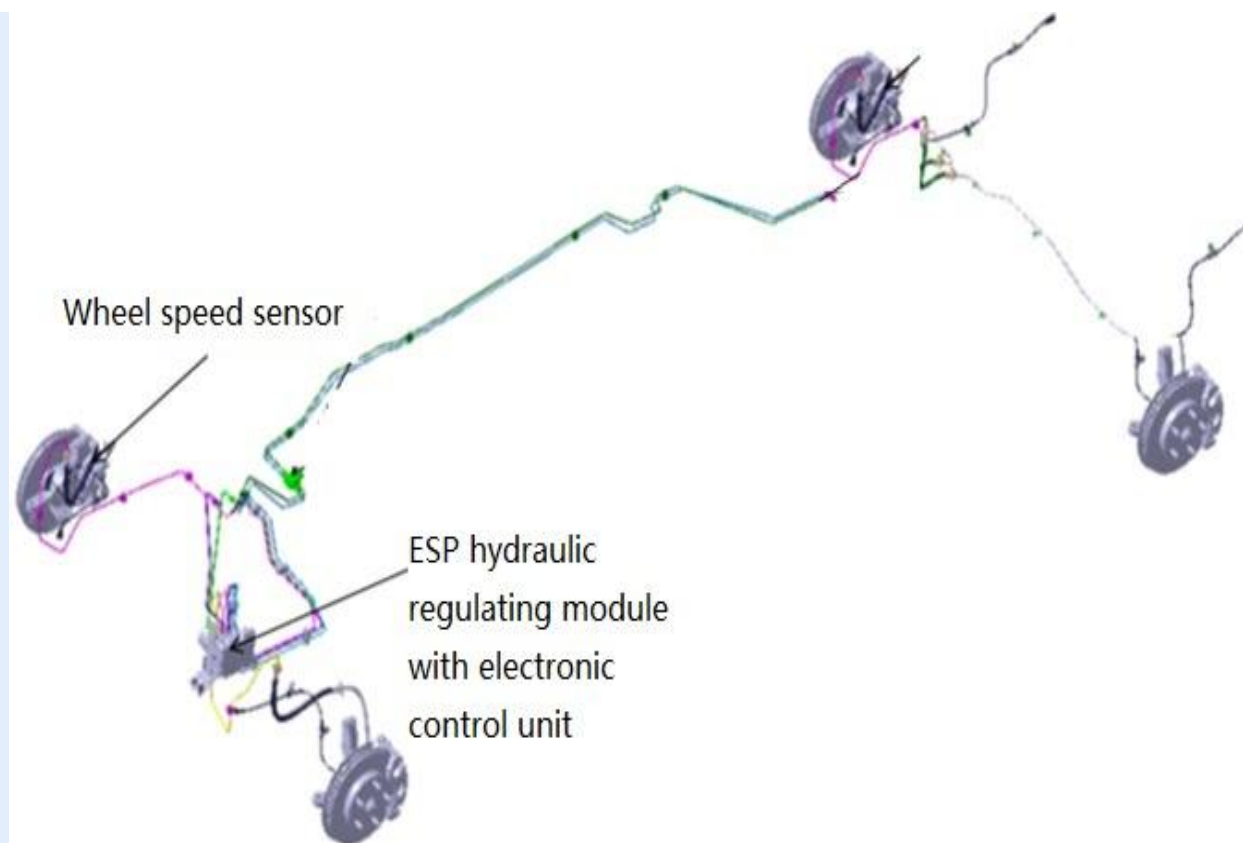


2、Vehicle configuration function

2.3 ESP(Vehicle Electronic Stability Program)

ESP integrates three functional modules: ABS, VDC and TCS. In addition, it integrates sub functions such as HHC, HBA, CDP and HDC.

- VDC (Vehicle Dynamic Control)
- TCS (Traction Control)
- ABS (Anti-lock Brake System)
- HHC(Hill-start Assist Control)
- HBA(Hydraulic Brake Assist)
- ESS (The Emergency Signal System)
- HDC(Hill Descent Control)
- AVH (AUTOHOLD)



2、Vehicle configuration function

2.4 ADAS driving assistance system

2.4.1 ACC adaptive cruise

Adaptive Cruise Control (ACC) uses radar to detect the relative distance and relative speed of the vehicle ahead and the vehicle, and actively controls the speed of the vehicle to achieve the purpose of automatically following the vehicle to cruise. Depending on whether there is a vehicle ahead, the system can automatically switch between cruise control and cruise following.

You can set the cruising speed of the vehicle and the time distance from the vehicle in front through the cruise handle to follow the vehicle at a speed of 30~150km/h.

WARNING: Do not use adaptive cruise control on curved or slippery surfaces, or in traffic conditions where driving at a steady speed would be unsafe.

Driver's intention



Main switch for cruise

Detect the distance
relative speed of the
vehicle ahead



Millimeter wave radar

control the speed
of the vehicle



ESP/EPB assembly

2、Vehicle configuration function



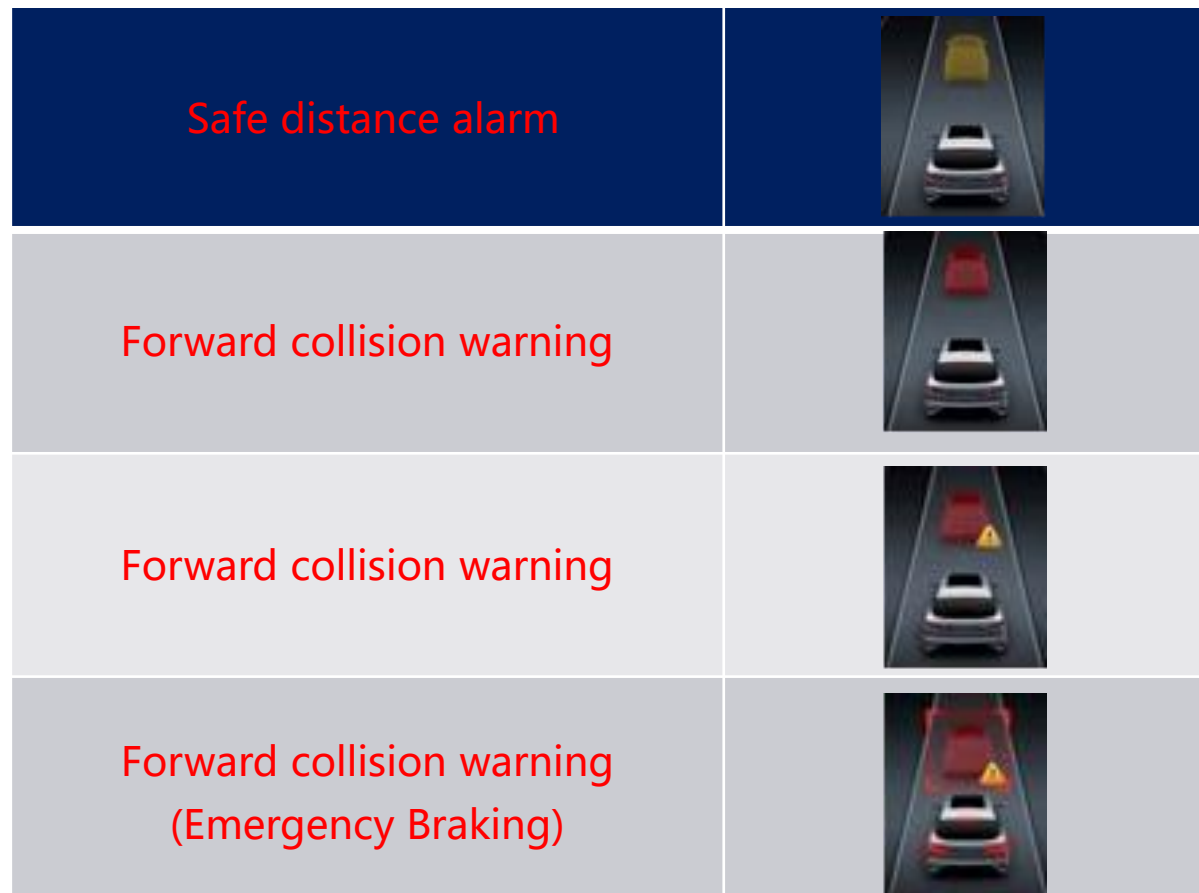
2.4.2 Predictive Emergency Braking System/Emergency Brake Assist EBA

□ Forward Collision Warning FCW

In the event of an emergency, the driver is provided with pre-alarm and emergency alarm prompts; at the same time, the pre-filling of the brake system and the adjustment of the hydraulic auxiliary brake threshold are prepared to provide brake assistance for subsequent drivers when braking.

□ Automatic emergency braking AEB

The automatic emergency braking function will provide a maximum speed reduction of 40km/h. High vehicle speeds cannot avoid collisions, but can only reduce the harm caused by collisions.



2、 Vehicle configuration function



2.5 Panoramic parking system

The F508 is equipped with four cameras, located above the front license plate, above the rear license plate, below the left exterior mirror, and below the right exterior mirror.

Whenever you switch to reverse gear, the panoramic parking function is forcibly turned on, and the image from the camera and radar is displayed on the touch screen. When your vehicle speed is lower than 10km/h, click the panoramic parking APP in the dock bar, you can also open it Panoramic parking.



2、 Vehicle configuration function



2.6 Driving recorder

The vehicle is equipped with a driving recorder. The high-definition camera and control module of the recorder are installed in the multi-function sensor cover behind the interior rearview mirror. Use image data to assist traffic police in handling traffic accidents fairly, justly and reasonably, and protect the rights and interests of drivers in all aspects. The information recorded by the driving recorder through the high-definition camera is saved in the memory card, and the real-time picture is transmitted to the vehicle screen through the data cable, so that the front screen of the recorder can be viewed at any time.



2、 Vehicle configuration function



2.7 Driving Data Recording System and Face recognition

EDR data and usage

This vehicle is equipped with an Automotive Event Data Recorder (EDR). The primary role of EDR is to record data in the event of certain collisions or near misses, such as airbag deployment or hitting a roadblock, to help understand how vehicle systems are performing. EDR is designed to record data related to vehicle dynamics control and safety systems for a short period of time (usually 5 seconds or less) at the time of an event. However, depending on the severity and type of incident, data may not be recorded.

Face recognition

Users can perform identity recording and face login management functions through face recognition.

Identity recording: Face recording can be performed on the car and mobile phone according to the prompts for identity recording;

- 1) Vehicle identity recording (static entry front + side): On the personal center interface, touch the [Identity Recording] button to switch to the identity recording interface. Touch to select the record face option, and then touch the [Record] button to switch to the face recording interface. Please follow the prompts to record the face. During the recording process, the driver should be prompted to sit upright and face the in-vehicle camera, and turn the face to the left, right, up and down. perform face entry;
- 2) Mobile APP identity recording: identity recording is performed on the mobile APP, the face information is uploaded to the TSP, the user starts the vehicle after getting in the car, and sits in the main driving position to quickly log in to the user account of the car and the machine.

2、Vehicle configuration function



2.8 Central control IVI touch screen



Driving preferences: steering mode settings, steering wheel custom buttons, parking return reminder
Body: electric back door, panoramic sunroof, sunshade, auto-folding rearview mirror, remote key synchronization control sunroof
Lighting: ambient light brightness, ambient light color
ADAS assistance: ACC target tone setting, front collision avoidance warning setting, rear interspersed warning setting

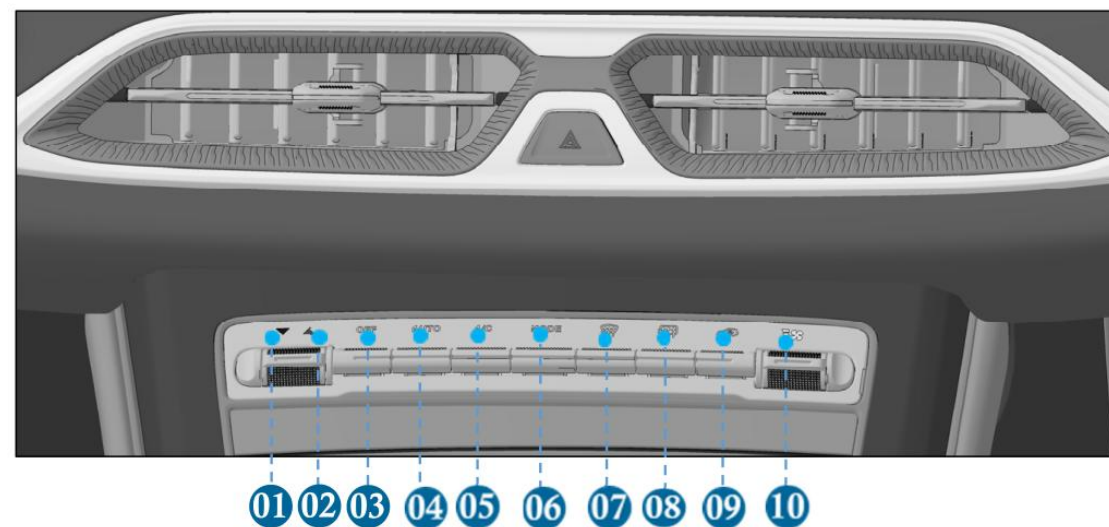
2、Vehicle configuration function



2.9 Automatic air conditioning system



Large screen operation



Button operation

2、Vehicle configuration function



2.10 Seat temperature settings



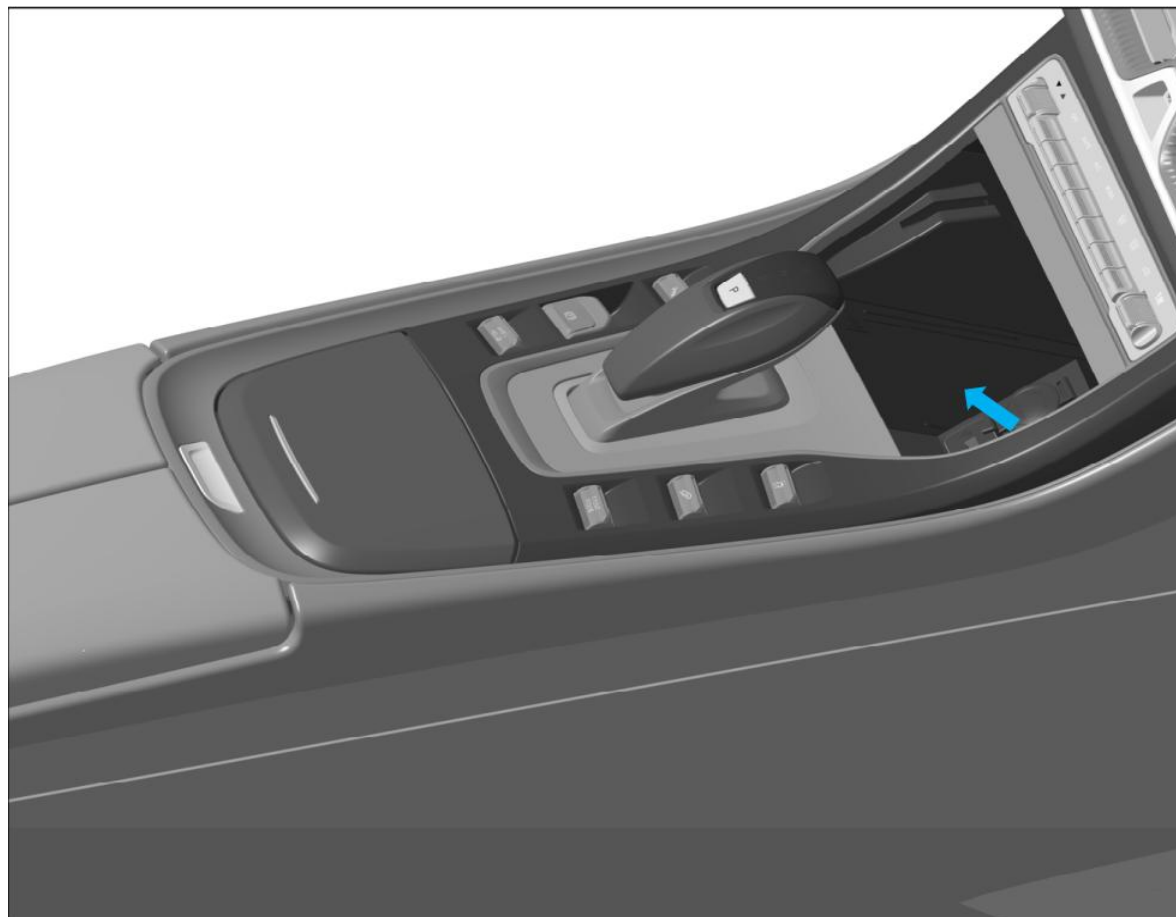
- ① Main driver seat heating: Click to turn on the main driver seat heating function, a total of 3 gears;
- ② Passenger seat heating: Click to turn on the passenger seat heating function, a total of 3 gears.

2、 Vehicle configuration function



2.11 Wireless charging

After the vehicle is powered on, the wireless charging module enters the working mode, and the mobile phone with wireless charging function (Qi certified) is placed in the charging area to start charging. During the charging process, the charging icon is displayed on the large screen.



2、Vehicle configuration function



2.12 Sports dual steering wheel + sports seat

❑ Flat bottom double width sports steering wheel

The flat bottom double width sports steering wheel is adopted to reserve more space for legs and improve riding comfort; Ergonomic design will remind people to put their hands in the right position to ensure driving safety; The steering is more accurate and the handling is more convenient.

❑ Front / rear sports integrated seat

The unique motion-integrated design of the same level, with a strong sense of motion, simulates human body data, allowing passengers to maintain a good sitting posture, and the spine is close to a natural bending state. The shape and curve of the seat back fit the curved surface of the human body in a relaxed state, with excellent wrapping and reasonable support for the lumbar spine. It can also have good fatigue resistance after long-term riding. When the vehicle is running, it prevents the human body from being displaced substantially, making it safer.



3. New 580 Vehicle General Function Operation



3.1 Remote key

□ Lock button

- Short press the lock button to lock the vehicle door
- Long press the lock button to raise the window, if equipped with a panoramic sunroof, the sunroof can be closed
- Press the lock button twice continuously to enable the car search function

□ Unlock button

- Short press the unlock button to unlock the front and rear doors, the lights will flash when unlocking
- Long press the unlock button, the window will be lowered, if equipped with a panoramic sunroof, the sunroof can be opened

□ Back door button

- When the back door is closed, long press the back door button to open, press it once to pause the back door opening, and press it again to close
- When the back door is open, press the back door button to close, press it again to pause closing, and press it again to open
- Press the back door button twice within two seconds to open the charging port cover



3. New 580 Vehicle General Function Operation



3.2 Power windows

❑ Window opening and closing

Press the switch to lower the corresponding window. There are two types of window switches. To partially lower the window, lightly press and hold the switch and release it when the window drops to the desired position; press the switch firmly and the window will open automatically, press the switch again, and the window will stop opening.

Pull up on the switch to raise the corresponding window. This control is also divided into two levels. Pull the switch lightly to raise the window, when the window rises to the desired position, release the switch; pull the switch hard, the window will automatically open, pull the switch again, and the window will stop closing.

❑ Lock the rear window

To prevent passengers from misusing the window switch, press the window lock switch. The switch indicator will light up. To unlock the windows, the switch must be pressed again.



Lock the rear windows when the child is in the rear seat.

Warning: Do not leave children alone in F508.

3. New 580 Vehicle General Function Operation



3.3 Power tailgate

□ Tailgate height adjustment

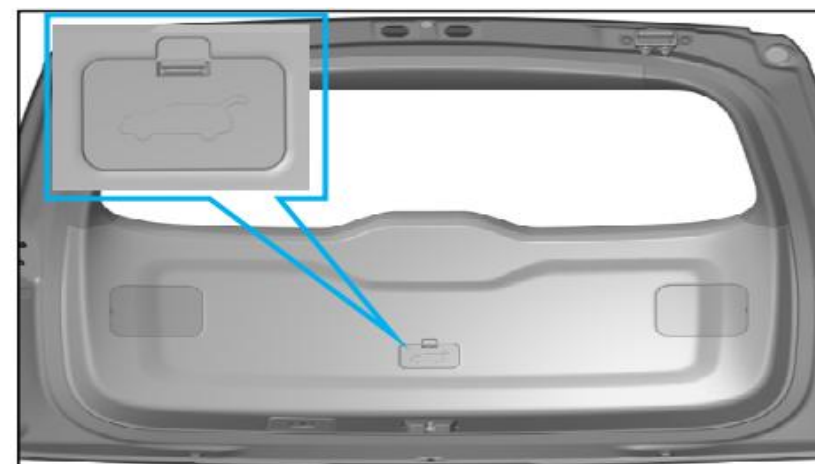
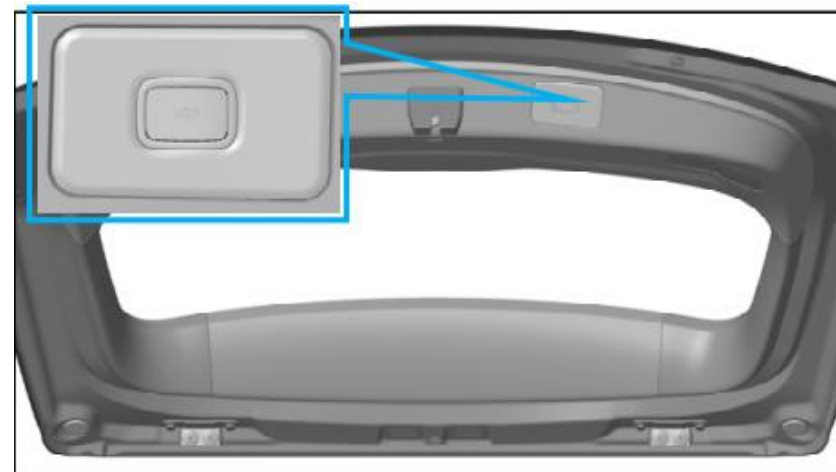
F508 back door is equipped with an opening height adjustment function to accommodate the operation of most people:

- ⊙ Open the back door and manually open it to the desired opening height.
- ⊙ Press and hold the back button on the back door trim panel for 5 seconds
- ⊙ The setting is completed after beeping alarm.

□ Tailgate emergency opening

When the vehicle is powered off, to open the rear door from the inside of the vehicle, you need to perform the following steps:

- ⊙ Open the emergency handle cover on the back door trim panel
- ⊙ Pull the back door emergency zipper (yellow) at the back door lock part
- ⊙ Open the back door after unlocking the back door lock



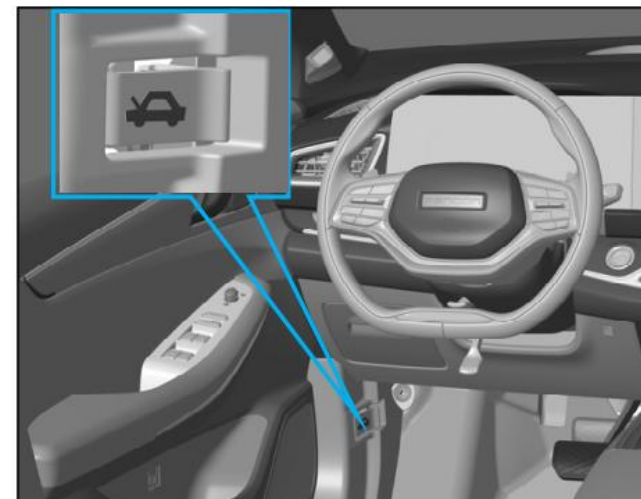
3. New 580 Vehicle General Function Operation



3.4 Front cover plate

❑ Open the front cover plate

Open the front trunk, and there is a front hood lock open handle arranged at the lower part of the dashboard on the driver's side. Pulling the handle twice in a row will automatically unlock the front hood and pop up to a certain height, and then the front hood can be opened.



❑ Open the front cover plate

- ⊙ Fully lower the front trunk lid until it reaches the latch.
- ⊙ Put your hands in the area shown on the front of the hood and press down firmly to engage the hood latches.
- ⊙ Slightly lift the front edge of the front trunk lid and check that it is fully closed.



3.5 Panoramic sunroof

❑ Reading light sunroof, sunshade opening operation

- When both the sunshade and the glass are closed, click 1 to control the sunroof glass and the sunshade to open the linkage. During the opening process, it will stop at the warped position at the same time. Press the glass open switch again, and then the linkage will be fully opened; during the opening process If you press any switch on the control glass to stop the current action.
- Click 3 to control the opening of the sunroof's shutter. The automatic and manual modes are the same as the glass control. During the opening process, if you press any sunshade switch to stop the current action.

Description: Long press (manual mode) and short press (automatic mode), short press time $\leq 300\text{ms}$, long press time $> 300\text{ms}$.



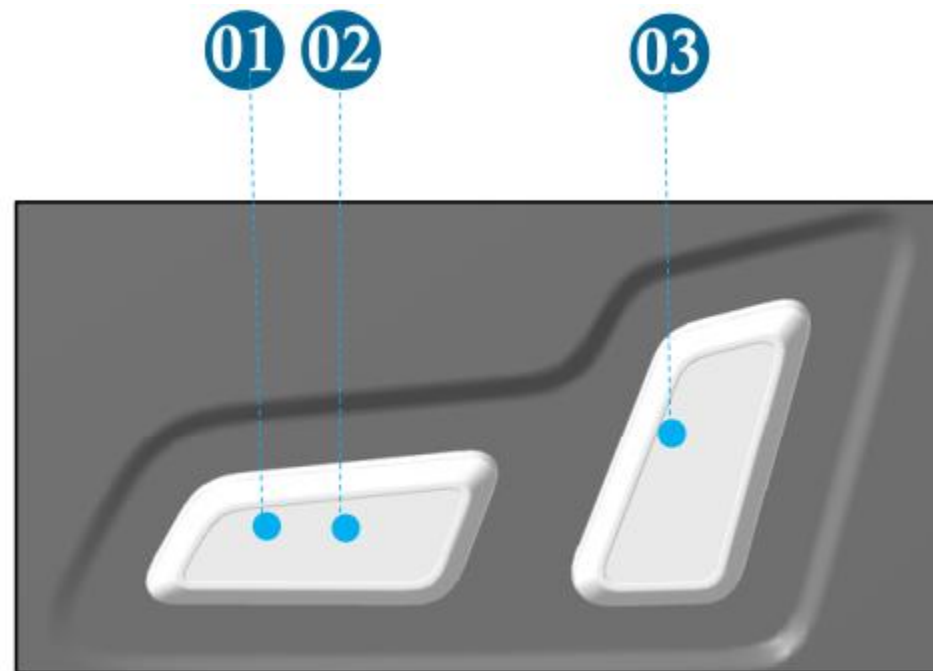
3.6 Front smart seat

□ Seat adjustment instructions

1. Adjust lumbar support
2. Adjust the backrest tilt angle
3. Move the seat forward / backward
4. Adjust the seat cushion height and tilt angle

□ Cushion gravity sensor

Detect whether there is a person sitting on the co-pilot seat (rated measurement weight $\geq 41\text{kg}$) and keep the driving posture

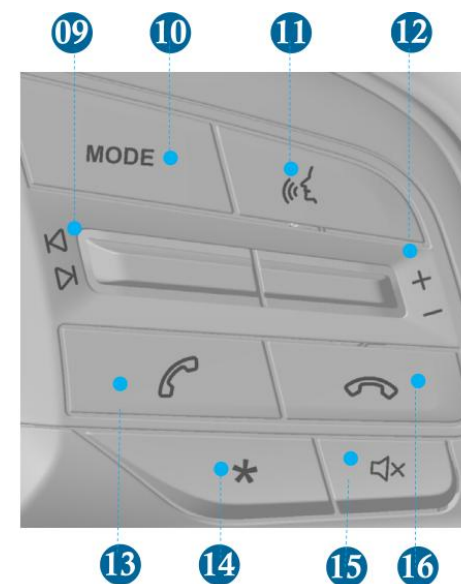
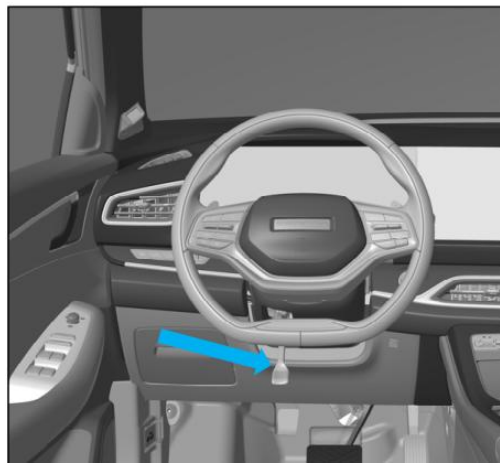


3. New 580 Vehicle General Function Operation



3.7 Steering wheel

1. **Screen selection key:**
2. **Following distance adjustment button:** cruise switch.
3. **Back button:** short press to return to the previous level
4. **Steering wheel OK key:** short press to confirm selection; long press to clear driving information; direction key: secondary menu selection.
5. **Resume adaptive cruise control/acceleration.**
6. **Adaptive cruise switch:** Short press to turn on the adaptive cruise system.
7. **Release cruise button**
8. **Activate adaptive cruise control/deceleration.**
9. **Previous track and next track:** Short press the previous track and the next track, long press to fast forward and rewind.
10. **Mode button:** short press to switch to radio→USB music in turn
11. **Voice recognition button:** wake up the voice assistant
12. **Volume adjustment:** toggle back and forth to adjust the volume.
13. **Call answer button:** Press to answer the call when it is connected with the mobile phone via Bluetooth.
14. **MP5 Custom Shortcuts**
15. **Mute button.**
16. **Phone hang-up key:** press to hang up the phone when it is connected to the Bluetooth of the mobile phone



3. New 580 Vehicle General Function Operation



3.8 Start and Stop

Depress the brake pedal and press the one-button start switch, and the vehicle's combination instrument and touchscreen will light up. The status of each door is displayed on the combination instrument, at this time you can operate all electrical devices and the vehicle is in the starting state.

Stop the vehicle

Automatic transmission: Depress the brake pedal, pull up the EPB button, switch the shift lever to N gear, then release the brake pedal, stay for 3S and then engage P gear.

Manual transmission: Depress the brake pedal, pull up the EPB button, shift the shift lever to neutral, and release the brake pedal. When the one-button start switch is pressed again, the vehicle will turn off the power, and the touch screen and the combination meter will be off.

3. New 580 Vehicle General Function Operation



3.09 Smart Health System

Self drying of the air conditioner: when the power is in the Off gear, the self drying switch of the air conditioner is turned on, and the flameout time exceeds 5min, confirm that all your doors have been closed. If you have used the air conditioner, the air conditioner will automatically ventilate and dry the air conditioner box after the vehicle flameout and locking.

Timed ventilation function: after flameout and locking, it will automatically ventilate within the specified time

Intelligent purification: when the air quality in the car exceeds the standard, it will automatically start purification.

Automatic switching of internal and external circulation: when the pollution outside the vehicle is serious, the air inlet of the air conditioner is automatically switched to internal circulation.

One key air purification: operate this key, the one key purification switch is on (or the switch animation shows), the system is activated, the anion generator is turned on, the blower is turned on, and operate this key again during the purification process, then exit the purification state, the anion generator is turned off, the one key purification switch is turned off (or the switch animation stops), and the air conditioning controller enters the off state.

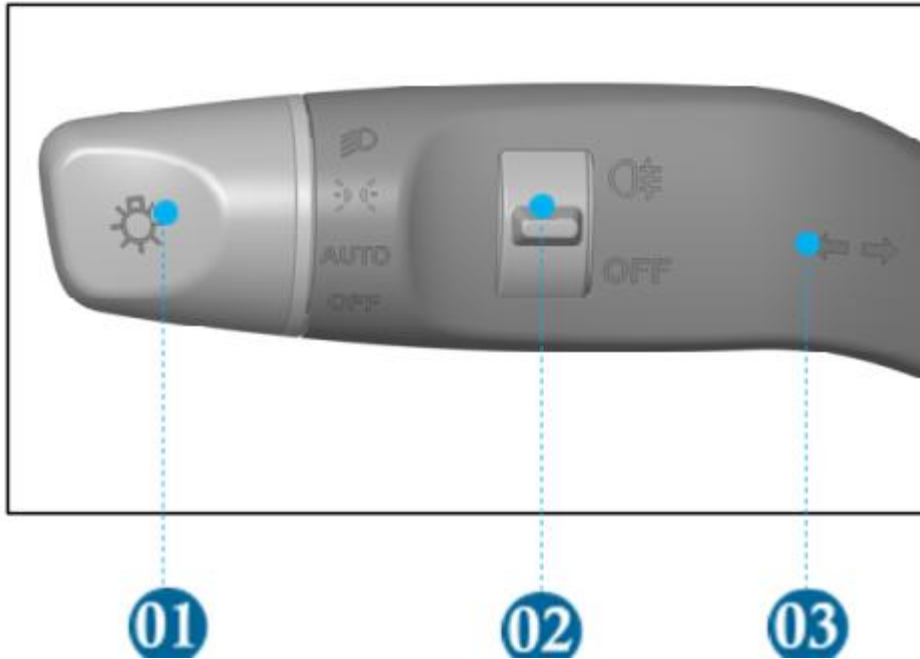
Unlock active ventilation: when the ignition switch is in off gear, the unlock ventilation switch is turned on, and the flameout time exceeds 10min. If you unlock the whole vehicle, the air conditioner will automatically ventilate the air in the vehicle.



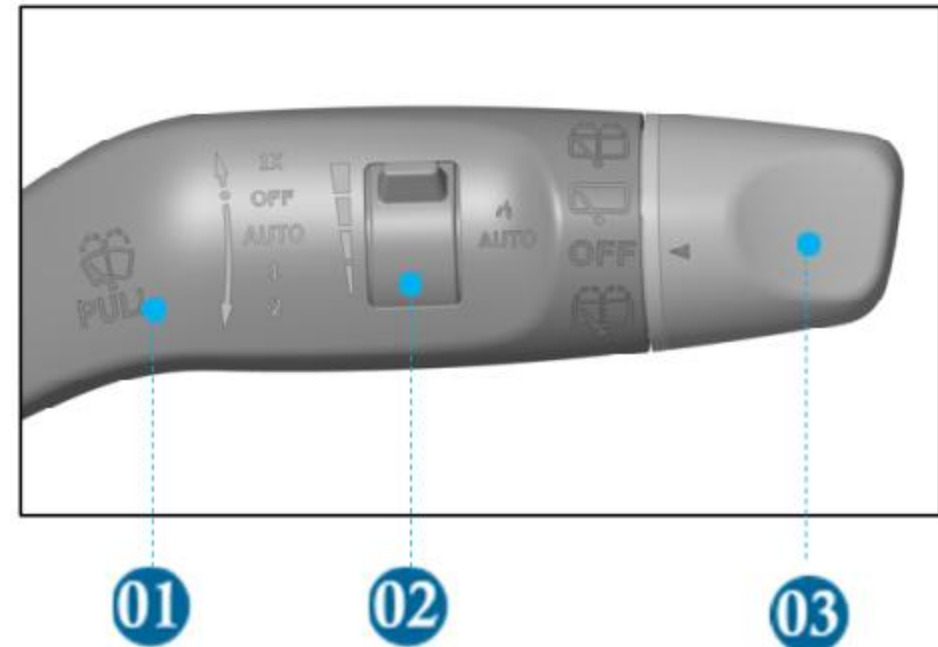
3. New 580 Vehicle General Function Operation



3.10 Lights and wipers



- ① Light control switch.
- ② Rear fog lamp control switch.
- ③ Light control handle (controls the far and near beams and turn signals).



- ① Wiper control handle.
- ② Sensitivity adjustment knob.
- ③ Rear wiper control switch.



THANKS

