

BILL OF MATERIALS FOR ONE UNIT

NO.	QTY	DESCRIPTION	MATERIAL
1	2	SHELL - 971.76mm I.D. x 1524mm S/S x 47.62mm THK (42" O.D. x 5'-0" LG. x 1 7/8" THK)	SA-516-70N
2	2	HEADS - 971.76mm I.D. x 2.1 S.E. x 44.45mm THK.	SA-516-70N
3	2	MIN. THK. AFTER FORMING: 44.45mm	
4	2	BOOT SHELL - 508mm DIA x APPROX. 752mm LG x SCH 100 SMLS PIPE	SA-106-B
5	1	BOOT HEAD - 508mm DIA x 2.1 S.E. x 22.68mm MIN. THK.	SA-516-70N
6	1	BOOT REPAD - 889mm O.D. x 508mm I.D. x 47.62mm THK.	SA-516-70N
7	1	219mm 8" - 600# RTJ-HB FORGED FITTING FLANGE	SA-105N
8	1	273mm 10" - 600# RTJ-HB FORGED FITTING FLANGE	SA-105N
9	1	457mm 18" - 600# RTJ-V3 FORGED FITTING FLANGE	SA-105N
10	1	457mm 18" - 600# RTJ-V3 FORGED FITTING FLANGE	SA-105N
11	2	1 5/8" DIA x 11" LONG STUDS c/w 2 NUTS AND 2 WASHERS	SA-193/194
12	1	1 1/2" PIPE SCH 160	SA-106-B
13	4	2" PIPE SCH 160	SA-106-B
14	2	1 1/2" - 600# FLG. RTJ WN SCH XXH	SA-105N
15	3	1 1/2" - 90° WELDED ELBOW SCH XXH	SA-234-WPB
16	2	1 1/2" - 6000# CPLG	SA-105N
17	2	3/4" - 6000# T.O.L.	SA-105N
18	2	1" - 6000# T.O.L.	SA-105N
19	1	1" - 6000# T.O.L.	SA-105N
20	2	1" - 6000# CPLG	SA-105N
21	2	WEB PLATES 1/2" THK	SA-36
22	4	SIDE PLATES 1/2" THK	SA-36
23	2	WEAR PLATES 7" WIDE x 1/2" LONG	SA-36
24	2	BASE PLATE	SA-36
25	8	RIB PLATE	SA-36
26	2	LIFTING LUGS 7" x 6" x 1" THK.	SA-36
27	2	INLET DEFLECTOR PLATE - 3/16" THK. CUT & BEND TO SUIT	SA-36
28	1	BAFFLE PLATE - 3/16" THK. CUT & BEND TO SUIT	SA-36
29	2	DEMISTER SUPPORT	SA-36
30	1	DEMISTER PAD - 6" THK. x 9#ft ³ x 9" O.D.	316 S.S.
31	1	NAME PLATE BRACKET - PLATE 1/8 THK. c/w ALUMINUM NAME PLATE	SA-36
32	1	NAME PLATE BRACKET - PLATE 1/8 THK. c/w ALUMINUM NAME PLATE	SA-36
33	1	NAME PLATE BRACKET - PLATE 1/8 THK. c/w ALUMINUM NAME PLATE	SA-36
34	1	NAME PLATE BRACKET - PLATE 1/8 THK. c/w ALUMINUM NAME PLATE	SA-36
35	1	NAME PLATE BRACKET - PLATE 1/8 THK. c/w ALUMINUM NAME PLATE	SA-36
36	1	NAME PLATE BRACKET - PLATE 1/8 THK. c/w ALUMINUM NAME PLATE	SA-36

NOZZLE SCHEDULE

MK	SIZE	RATING	TYPE	PIPE SCH	SERVICE	PROJECTION		WELD DET			WELD SIZE			REPAD
						INT	EXT	WELD	DET	A	B	C	D	
N1	10"	600#	RTJ HB	-	INLET	0	12"	5	5	3/8"	3/8"	3/8"	3/8"	
N2	8"	600#	RTJ HB	-	OUTLET	0	12"	5	5	3/8"	3/8"	3/8"	3/8"	
N3	2"	600#	RTJ XXH	-	PCV	0	12"	5	13	3/8"	3/8"	3/8"	3/8"	
N4	2"	600#	RTJ XXH	-	BRIDDLE	0	6"	5	13	3/8"	3/8"	3/8"	3/8"	
N5A	1 1/2"	600#	RTJ XXH	-	BRIDDLE	0	6"	5	13	3/8"	3/8"	3/8"	3/8"	
N5B	1 1/2"	600#	RTJ 160	-	BRIDDLE	0	6"	5	13	3/8"	3/8"	3/8"	3/8"	
N6A	1 1/2"	600#	RTJ 160	-	BRIDDLE	0	6"	5	13	3/8"	3/8"	3/8"	3/8"	
N6B	1 1/2"	600#	RTJ 160	-	BRIDDLE	0	6"	5	13	3/8"	3/8"	3/8"	3/8"	
MH	18"	600#	RTJ-V3	-	MANWAY	0	12"	5	5	3/8"	3/8"	3/8"	3/8"	
BOOT	18"	-	-	100	BOOT	0	28.5"	7	1/2"	1.5"	1.5"	1.5"	1.5"	ITEM#5
C7	3/4"	6000#	T.O.L.	-	PI	-	-	-	11	5/8"	5/8"	5/8"	5/8"	
C6	3/4"	6000#	T.O.L.	-	TI	-	-	-	11	5/8"	5/8"	5/8"	5/8"	
C5	1"	6000#	CPLG	-	OIL OUTLET	-	-	-	9	1/2"	1/2"	1/2"	1/2"	
C3AB	1 1/2"	6000#	CPLG	-	LLSD	-	-	-	9	3/8"	3/8"	3/8"	3/8"	
C2	1"	6000#	T.O.L.	-	WATER OUTLET	-	-	-	11	7/8"	7/8"	7/8"	7/8"	
C1	1"	6000#	CPLG	-	DRAIN	-	-	-	9	5/8"	5/8"	5/8"	5/8"	

DRAWING NOTES:
 CAPACITY: ___ cft. 2.55 CUBIC METER
 WT. EMPTY: ___ LBS
 WT. FULL OF WATER: ___ LBS
 SURF. PREP: SAND BLASTED (SSPC-SP6)
 PRIMER: COATED PER EXISTING CONDITION
 PAINT: COATED PER EXISTING CONDITION
 INSULATION: NONE

IMPACT TEST: EXEMPT PER UG20(f) 1-5.

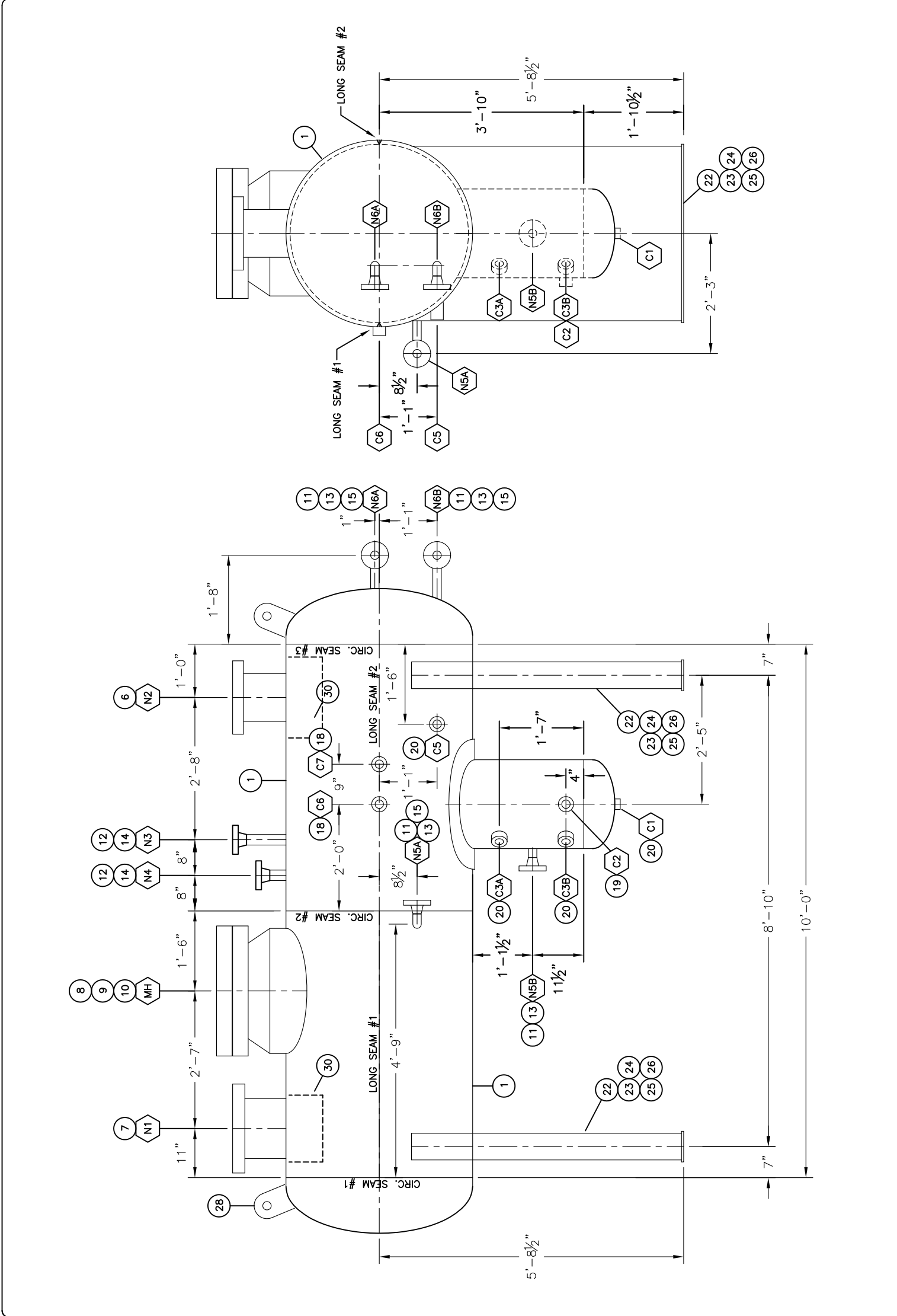
MANUFACTURE SPECS:
 1/ Service: SOUR (NON LEATHL)
 2/ Circ. welds type 1
 3/ QWP: WP-728.2(on file)
 4/ QCP: A-OPS-1091(on file)
 TACK WELDS & PRESS. TO STRUCT. WELD # FSF-1,2,5

ITERATION ENERGY c/o GLE

42" I.D. x 10'-0" S/S - Hori. SEPARATOR
 VESSEL BUILT BY CESCO FAB. & ENG. LTD.

FLO-SKID MANUFACTURING INC.
 OIL AND GAS PRODUCTION EQUIPMENT

SCALE: N.T.S. DATE: 08/11/27 DRAWN BY: M.J.R. CHECKED: F.K.
 JOB No. PROJECT No. 2332 DRAWING No. 2332-F-2635 REV. A



CODE: ASME SECT. VIII DIV 1
 YEAR: 1983/2007
 DESIGN PRESS: 1440 PSIG
 DESIGN TEMP: 100°F
 MIN W. DESIGN METAL TEMP: -20°F
 HYDROTEST PRESS: 2160 PSIG
 HEAD MATERIAL: SA-516-70N
 SHELL MATERIAL: SA-516-70N
 BOOT SHELL: SA-106-B
 RADIOGRAPHY: RT-1
 CIRC: FULL UWII(c) LONG SEAM: FULL UWII(c)

P.W.H.T.: 605°C FOR 2 HOURS (PERFORMED IN 1983)
 CORR. ALLOW: 1/8" (3.175mm)

LSD#:
 TAG NO:

CERTIFIED BY

W. M.A.W.P. 1440 PSI AT 100 °F
 RT-1 M.D.M.T. -20 °F AT 1440 PSI
 W.P.# F5586.2 SER. NO. F1P1023A YR. BUILT 1983

CRN F5586.2 42" I.D. HORIZ. SEPARATOR
 BUILT BY CESCO: 1983

DRAWING NUMBER REFERENCE DRAWINGS

DOUBLE BUTT	CIRC. AND LONG. SEAM	SKIRT TO HEAD	NOZZLE OR PIPE THRU. CAP	NOZZLE FLUSH	NOZZLE RECESSED	NOZZLE ROS'D WITH REPAD
W.P.# 607 BACK GOUGE TO SOUND METAL BEFORE ZND WELD	W.P.# FSF-5.2 SINGLE VEE BUTT SINGLE BEVEL MIG ROOT	W.P.# FSF-5.2	W.P.# FSF- 130°	W.P.# FSF- 30°	W.P.# FSF-7.2 1/16"	W.P.# FSF-7.2 1/16"
COUPLING RECESSED	COUPLING RECESSED	SADDLE COUPLING	THREDOLET	TRANSITION WELD	NOZZLE NECK & FLANGE	NOZZLE NECK & FLANGE
W.P.# 8 BACK WELDED 9	W.P.# 8	W.P.# 10 DRILL OR CUT MAX 2 1/4"	W.P.# 11 DRILL OR CUT MAX 2 1/4"	W.P.# FSF-5.2 3X	W.P.# FSF-5.2 13	W.P.# FSF-5.2 13