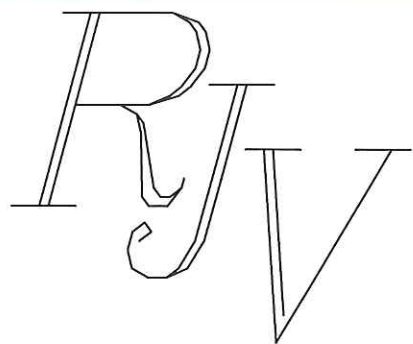
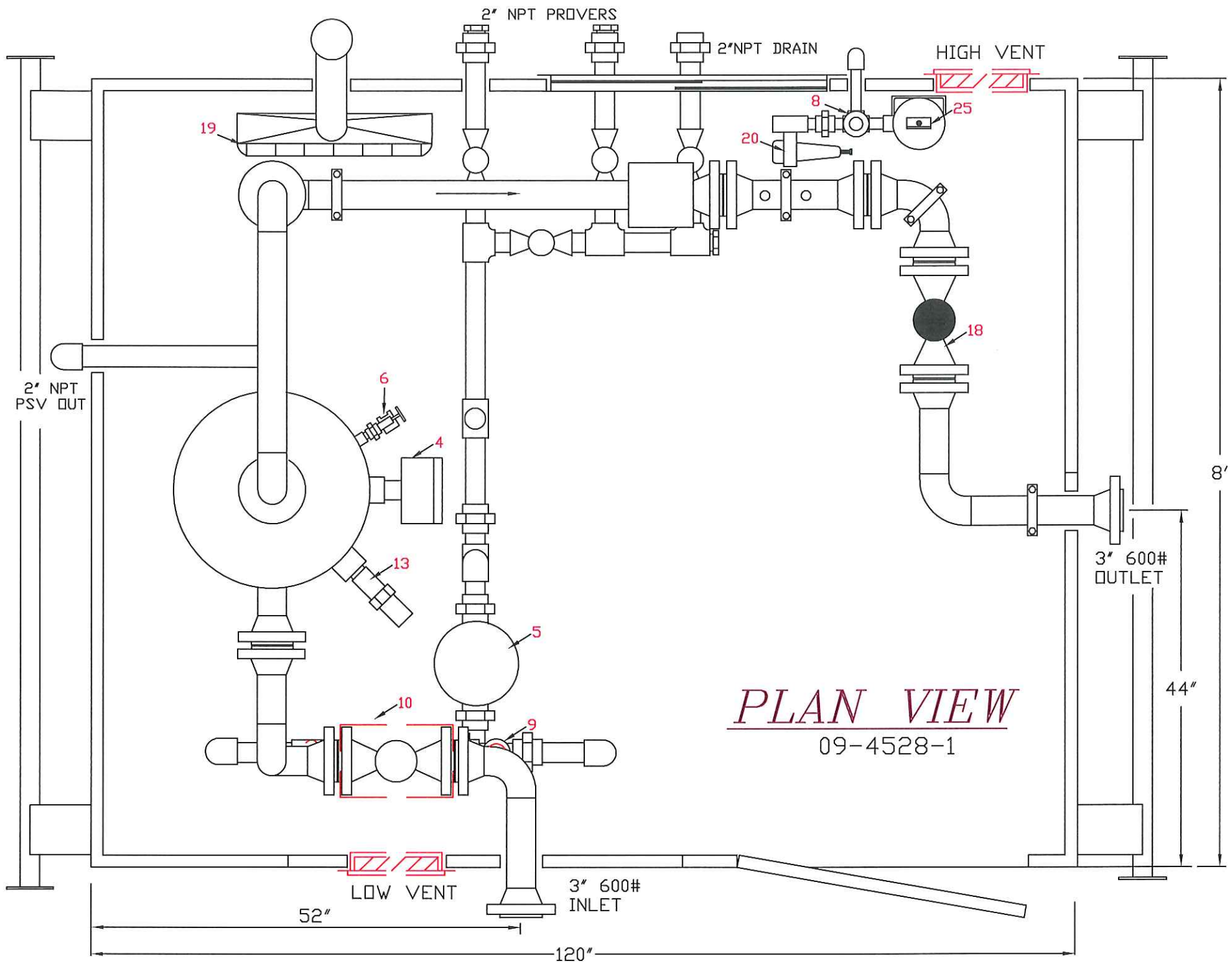


SHIPPING DETAILS

TOTAL WIDTH- 9' TOTAL LENGTH- 11'-4"
 TOTAL HEIGHT- 12' APROX. WIEIGHT- 8400 LBS

REV	DATE	DESCRIPTION	BY
		<p>TITLE: _____ 24"X8'0"s/s 3" 600 ANSI 1,440 PSI, 3-PHASE VERTICAL MISTEX, STD. SERVICE SINGLE ZONE SEPARATOR-METER SKID FACILITIES.</p>	
		<p>DWG. # 4528-1 REV. #</p>	<p><u><i>GAS FIELD SERVICES.</i></u> 4901 BRUCE RD VEGREVILLE, ALTA T9C-1C3 PHONE (780) 632-7774 FAX (780) 632 6820</p>
		<p style="text-align: center;"><u>WARNING !</u> This drawing and the design it covers are confidential and shall not be dis- closed to others or reproduced in any manner , or used for any purpose whatsoever, except with written con- sent of R J V Gas Field Services Ltd.</p>	<p>RJV JOB# 09-4528</p>
		<p>DWN BY: SI DATE: MARCH 3, 2009 SCALE: NTS</p>	



PLAN VIEW

09-4528-1

2" NPT PSV OUT

2" NPT PROVERS

2" NPT DRAIN

HIGH VENT

19

20

25

6

4

18

13

5

3" 600#
OUTLET

10

9

8'

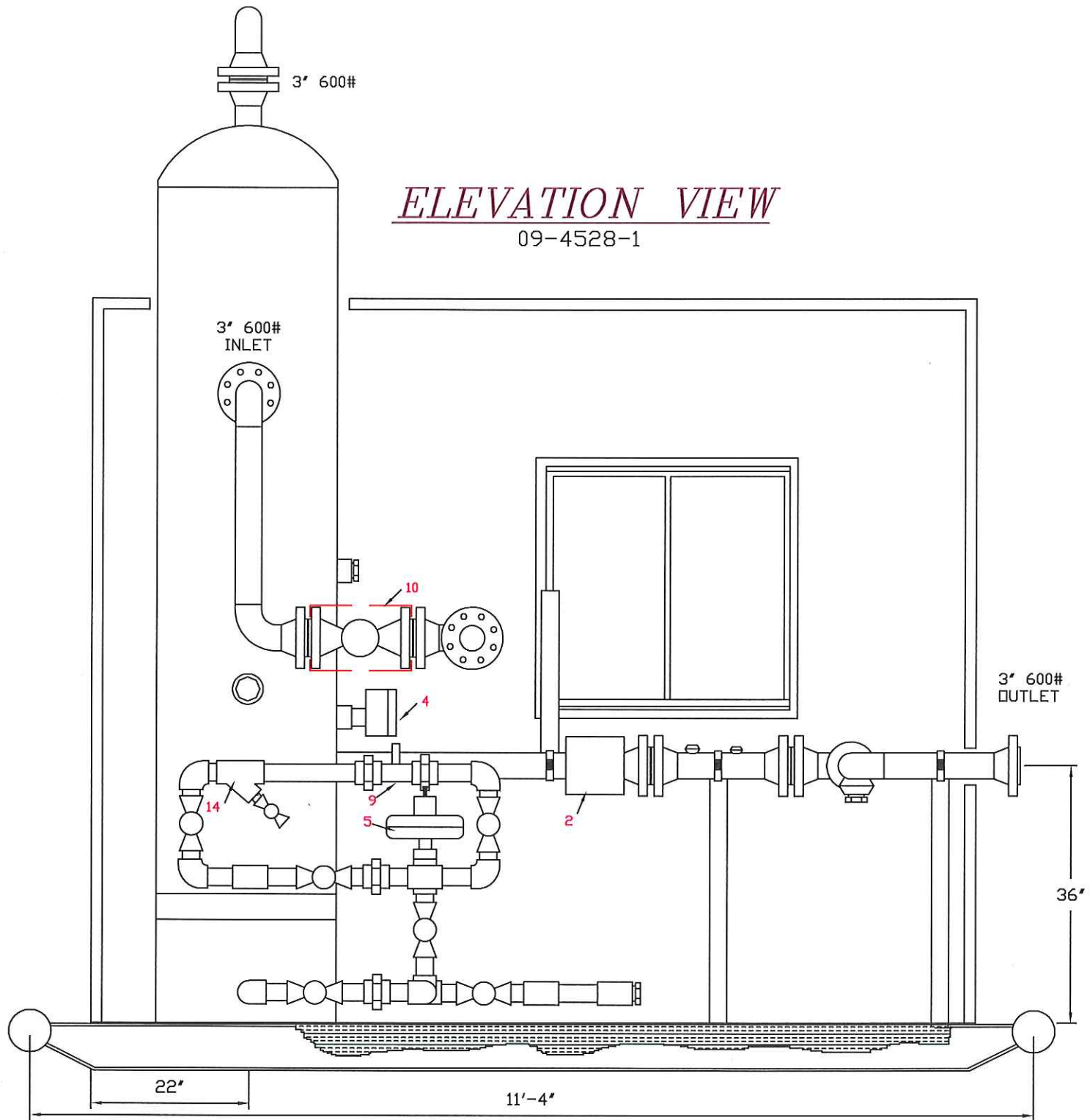
44"

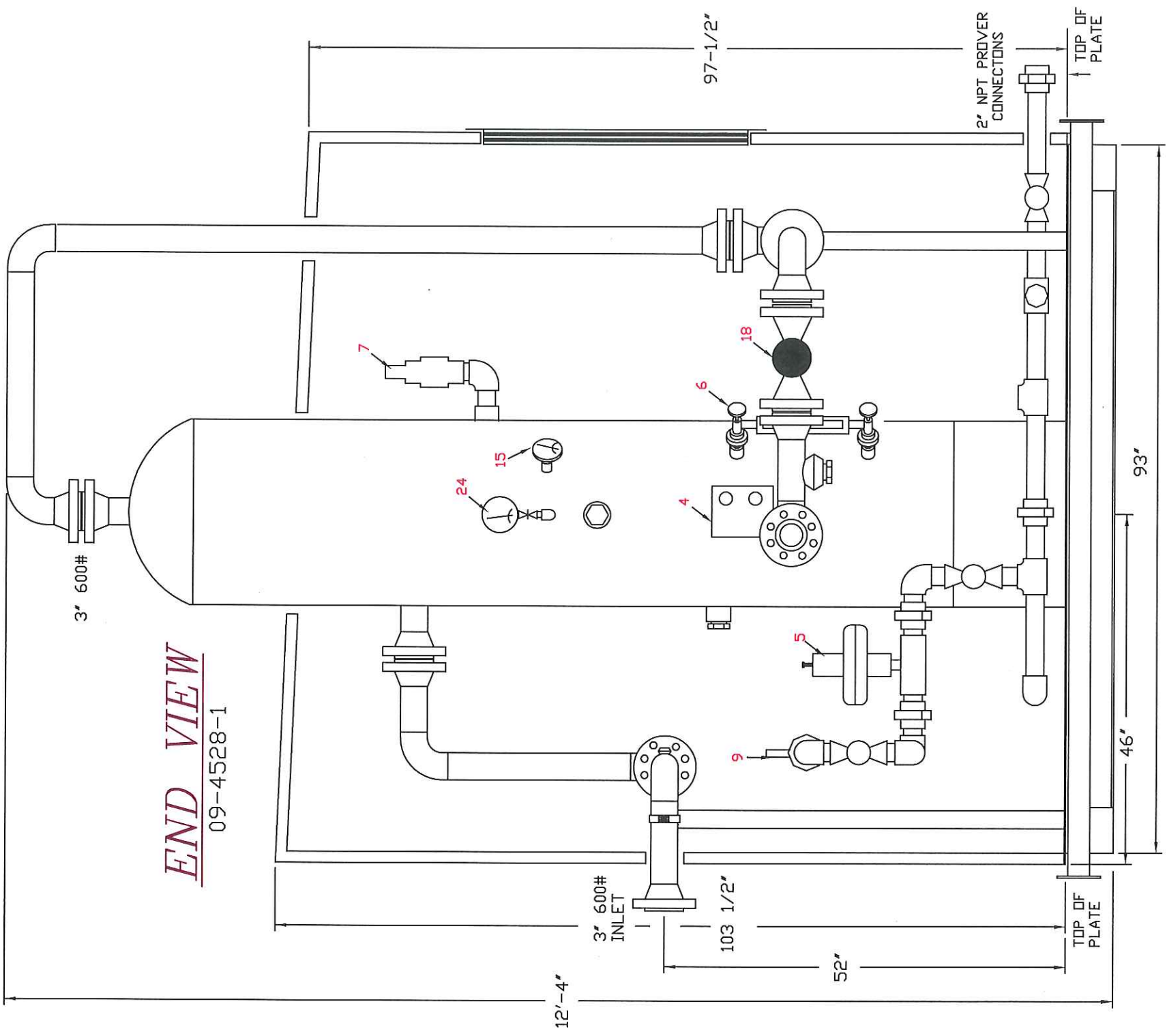
LOW VENT

3" 600#
INLET

52"

120"





END VIEW

09-4528-1

3" 600#

3" 600#
INLET

103 1/2"

52"

TOP OF
PLATE

46"

93"

TOP OF
PLATE

2" NPT PROVER
CONNECTIONS

97-1/2"

7

24

15

4

6

9

5

18

EQUIPMENT & MATERIAL

TAG#	ITEM	QTY	DESCRIPTION
V-100	1	1	RJV 24"x8" 5/5 600 ANSI, 1440 PSI, 3 PHASE, VERTICAL MISTEX SEPARATOR C/W 1/8" CORROSION ALLOWANCE.
FE-100	2	1	NORTHSTAR 3" 600 ANSI SCH 40 (SIMPLEX) DRIFICE FITTING AGA FIG 3CD, 70 BETA RATIO, 3 TAPS- 1, 3/4" & 2, 1/2" NPT, C/W 1 304 SST DRIFICE PLATE AND PLATE RETAINER, STD. SERVICE
FR/PR-100	3	1	ITT BARTON MODEL 202N, 2-PEN, 0-1500 PSIG, 0-250 WC", STD. TRIM, SUNCHEBIZ PROGRAMMABLE ELEC. CHART DRIVE, STANDARD PRESSURE PARTS, C/W AGCO M6TVDC-4, 5-VALVE CS MANIFOLD
LC-100	4	1	DYNAFLD 2" NPT LIQUID LEVEL CONTROL, MODEL #5000, CARBON STEEL BODY, SNAP ACTING C/W 1-7/8" X 12" PVC DISPLACER
LCV-100	5	1	KIMRAY 2" NPT MODEL 2200-SMT PD-1" IV, HIGH PRESSURE MOTOR VALVE, 0-35 PSIG SIGNAL (DN/DFF), 1" PORT SIZE, STD. SERVICE. CARBON STEEL BODY, 2000 PSIG. DESIGN PRESSURE.
LG-100	6	1	PENBURTHY MODEL #17MS TRANSPARENT LEVEL GAUGE C/W 330J GAUGE COCKS & 1/2" NPT BALL DRAIN VALVE, STD. SERVICE.
PSV-100	7	1	TAYLOR 2"x 2" NPT MODEL T-8200-2, SPRING RANGE 351-1440 PSIG, CS BODY, STD. TRIM, SOFT SEAT '913" DRIFICE, SET @1440 PSIG.
PSV-110	8	1	TAYLOR 1"x 1" NPT MODEL T-8200-1, SPRING RANGE 100-175 PSIG, CS BODY, STD. TRIM, SOFT SEAT '913" DRIFICE, SET @ 150 PSIG.
FM-100	9	1	PRIMARY FLOW 1-1/2" BOREX 2" NPT BAT-RT TURBINE PACKAGE, 1200 OHMS, ELECTROMAGNETIC PICK UP COIL.
ESDV-100	10	1	DYNAFLD ACTUATOR C/W 3" 600# RF. NUTRON BALL VALVE, RADIUS AS060 ACTUATOR, FAIL CLOSED, SUPPLY 40 PSI.
UV-100	11	1	AMOT 1/4" NPT MODEL 4057D025H2 PNEUMATIC 3-WAY SWITCHING VALVE STD. SERVICE, 125 PSIG MAXIMUM, ALL PORTS, VITON SEALS.
PSHL-100	12	1	FISHER TYPE 4660 HI-LO PNEUMATIC PRESSURE PILOT, STANDARD, PROCESS, 0-1500 PSIG 316 STAINLESS STEEL BOURDON TUBE
HLSD-100	13	1	MURPHY 2" NPT MODEL L1200, PNEUMATIC LEVEL SWITCH, CS BODY STD. SERVICE, 30 PSI SUPPLY, C/W DUMP VALVE OPERATOR.
YS-100	14	1	ALBERTA STRAINER 2" NPT YS600 Y-STRAINER
TI-100	15	1	TREND MOD 33, 3" DIAL, DS, -40/120°F, C/W 316 SST TDW, 4" STEM DN SEPARATOR.
TI-101	16	1	TREND MOD 33, 3" DIAL, DS, -40/120°F, C/W 316 SST TDW, 2-1/2" STEM DN METER RUN
FI-100	17	1	HEADLINE 1/2" NPT. MODEL #360A, C/W 1-P/N 25-64-70C ELEMENTS.
FCV-100	18	1	NAVCO 3" 600# ANSI RFF MANUAL GLOBE VALVE, CARBON STEEL BODY, STANDARD SERVICE TRIM, MANUALLY OPERATED.
H-400	19	1	CATADYNE BX24X24 24,000 BTU, 12 VDC, NATURAL GAS HEATER C/W STANDS, SSOV, REGULATORS, 25 FT CABLES, THERMOSTAT, GRILL, VENT HOOD & ELECTRICAL AS PER DEC REGULATIONS.
PRV-110	20	1	BELGAS 1" NPT TYPE P627, CARBON STEEL BODY, 1/8" DRIFICE, NYLON DISC, 35-80 PSI SPRING RANGE, SET@ 50 PSIG.
PRV-100/200	21	2	BELGAS 1/4" NPT MODEL P50, 0-60 PSI SPRING RANGE, SET @ 30 PSI, STANDARD SERVICE. (LC-100, PSHL-100 SET @ 40 PSI)
V-110	22	1	RJV 6"x24" 5/5 FUEL GAS SCRUBBER 975 PSI DESIGN PRESSURE, 1/16" CORROSION ALLOWANCE, ABSA REGISTRATION
FGSV-110	23	1	RJV 2"x1" FUEL GAS SHUT OFF VALVE, MODEL FGSV 5100.
PI-100/101	24	2	WKA #23354 4" DIAL 1/2" NPT BOTTOM CONN. LIQUID FILLED, DS, 0/1500# PSI C/W PANAM 1/2" NPT ISOLATION/BLEED VALVES, STANDARD SERVICE, (SEPARATOR/OUTLET PIPING).
PI-110	25	1	WKA #23353 2 1/2" DIAL 1/4" NPT BOTTOM CONN. LIQUID FILLED, DS, 0/200 PSI C/W PANAM 1/4" ISOLATION VALVE. (FUEL GAS SCRUBBER)
PI-200	26	1	WKA #23353 2 1/2" DIAL 1/4" NPT BOTTOM CONN. LIQUID FILLED, DS, 0-60 PSIG.
YS-100	27	1	ALBERTA STRAINER 2" NPT YS600 Y-STRAINER
	28	6	NAVCO 1/2" NPT 2000# #H1-R05S20-S BALL VALVES.
	29	8	NAVCO 2" NPT 2000# #H1-R20S20-S BALL VALVES
	30	3	PANAM 1/4" NPT 6000# CARBON STEEL NEEDLE VALVES.
	31	2	PANAM 1/2" NPT 6000# CARBON STEEL NEEDLE VALVES.
	32	1	PLAINSMAN 1/2" NPT 3000# CB-50 BALL CHECK (SCUBBER LINE)
			TUBING- 3/8" & 1/2" DD .035 WT 304 STAINLESS STEEL TUBE FITTINGS- SWAGelok CADMIUM PLATED FR PRESSURE SENSING LINES & FG TAKE-OFFS SHALL BE 1/2" DD
			SKID- RJV 8"x11/4" C/W 6"Ø15 WIDE FLANGE BEAM (PERIPHERY & MAIN CROSS BEAMS) 5"Ø6.7 CHANNEL IRON (CHECKER FLOORING SUPPORTS) 3/16" CHECKERED PLATE (FLOORING), 2" POLYURETHANE UNDERSKID INSULATION AND 2 7/8" PULL BARS EACH END
			BUILDING- 8'X10'X102"-97'-1/2" URETHANE INJECTED PANEL TYPE C/W SHED ROOF, 30 GAUGE PREPAINTED STEEL EXTERIOR WALLS (WHITE), R12 INSULATION VALUE 30 GAUGE INTERIOR PREPAINTED STEEL(WHITE)
			DOOR- 3'X7' URETHANE INJECTED PANEL TYPE, C/W PANIC LOCK WEATHER STRIPPING, CHAIN CHECK, DOOR SWEEP.
			WINDOW- 1, 36"X36" DG SLIDER C/W SCREENS. VENTS- 2, 12"X12" INSULATED ALUMINUM LOUVERED C/W SCREENS.
			FLANGES: SA-105N 600 ANSI, 2", 3" SCH 80/40, WELD FITTINGS: SA-234-WPB, 2", 3" SCH 80/40 SCREWED FITTINGS: SA-105N 3000# F.S. SCREWED UNIONS: SA-105N 3000# F.S. D-LETS: SA-105N 3000# F.S. PIPE AND NIPPLES: SA-106 GR B SEAMLESS. WELDED: 2", 3" SCH 80/40, THREADED PIPE/NIPPLES/SWAGES: 150#- SCH 80, 600#- SCH 160 BOLTING: ASTM A193 GR B7 STUDS/ASTM A194 GR 2H NUTS. GASKETS: 304 SST FLEXATALLIC.
			WELDED PIPING SHALL BE SUBJECTED TO 10% RADIOGRAPHY. WELDED PIPING SHALL BE HYDROSTATICALLY TESTED TO 2.160 PSIG. ALL VENTING CONTROLS AND INSTRUMENTS SHALL BE VENTED TO SKID EDGE AND ALL CONTROLS OPERATIONALLY AIR TESTED. ALL METAL SURFACES SHALL BE MECHANICALLY CLEANED TO SSPC-SP-2, 1 COAT OF ZINC CHROMATE PRIMER AND 1 FINISH COAT OF ENAMEL PAINT SHALL BE APPLIED AS FOLLOWS- CHECKERED PLATE FLOORING: WARM GREY STEEL SKIDS, EQUIPMENT, PIPING & TANKS: WARM GREY

09-4528-1