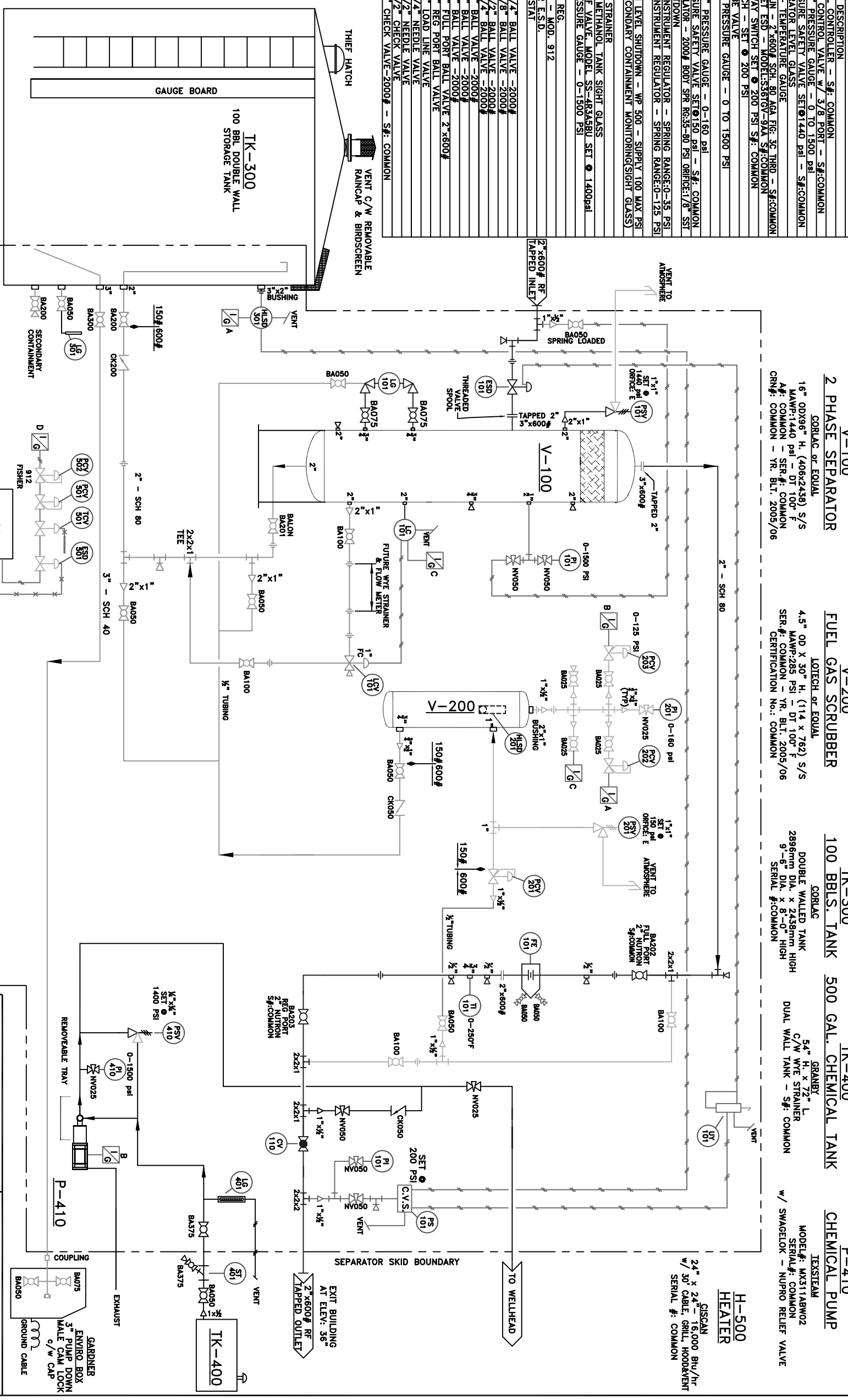


BILL OF MATERIALS


TAG. No.	DESCRIPTION
LG-101	NORRISEAL 1001A LEVEL CONTROLLER - S#F: COMMON
LCV-101	NORRISEAL 2275 LEVEL CONTROL VALVE W/ 3/8" PORT - S#F: COMMON
PI-101	WIKA or EQUAL - 1/2" PRESSURE GAUGE W/ 0 TO 1500 PSI
PSV-101	TAYLOR 18200-1 PRESSURE SAFETY VALVE SET @ 1440 PSI - S#F: COMMON
TI-101	PENBERTHY 1R16 SEPARATOR LEVEL GLASS
TI-101	GALGETECH or EQUAL - TEMPERATURE GAUGE
FE-101	NURLO or EQUAL-METER RUN - 2" x 600# SCH. 80 AGA FIG. 30 THRD - S#F: COMMON
UY-101	NORRISEAL 2220 - INLET ESD - MODEL: 3387GV-99A S#F: COMMON
PS-101	AMOT 4057 - THREE WAY SWITCH SET @ 200 PSI S#F: COMMON
CV-101	CYS - PRESSURE SWITCH - SET @ 200 PSI
PI-110	DHY or EQUAL 2" GLOBE VALVE
PI-110	WIKA or EQUAL - 1/2" PRESSURE GAUGE - 0 TO 1500 PSI
PI-201	WIKA or EQUAL - 1/4" PRESSURE GAUGE - 0-160 psi
PSV-201	TAYLOR 18200-1 PRESSURE SAFETY VALVE SET @ 150 PSI - S#F: COMMON
PCV-201	FISHER 6Z1 FUEL GAS REGULATOR - 2000# BODY SFR R635-80 PSI ORifice: 1/8" SIT
HLSD-201	ZIRCO HIGH LEVEL SHUTDOWN INSTRUMENT REGULATOR - SPRING RANGE: 0-35 PSI
PCV-202	FISHER 67CIR-362 1/2" INSTRUMENT REGULATOR - SPRING RANGE: 0-125 PSI
PCV-203	FISHER 67CIR-801 1/2" INSTRUMENT REGULATOR - SPRING RANGE: 0-125 PSI
HLSD-301	WELMARK STZP-72 HIGH LEVEL SHUTDOWN - WP 500 - SUPPLY 100 MAX PSI
LG-301	LOUVERS & GAUGES SECONDARY CONTAINMENT MONITORING(SIGHT GLASS)
LG-401	ALTA or EQUAL - WYE STRAINER
ST-401	LOUVERS & GAUGES - METHANOL TANK SIGHT GLASS
PSV-410	SWAGelok NUPRO RELIEF VALVE MODEL SS-4R345BU SET @ 1400psi
PI-410	WIKA or EQUAL 1/2" PRESSURE GAUGE - 0-1500 PSI
PCV-501	MAXITROL - APPLIANCE REG.
PCV-502	FISHER - HEATER REG. - MOD. 912
ESD-501	BA50 - GISCAN HEATER E.S.D.
TCV-501	GISCAN HEATER THERMOSTAT
BA225	FUSION or EQUAL 1/4" BALL VALVE - 2000#
BA275	GAS-FLO or EQUAL 3/8" BALL VALVE - 2000#
BA030	FUSION or EQUAL 1/2" BALL VALVE - 2000#
BA075	FUSION or EQUAL 3/4" BALL VALVE - 2000#
BA100	FUSION or EQUAL 2" BALL VALVE - 2000#
BA200	FUSION or EQUAL 2" BALL VALVE - 2000#
BA201	BALON RP 2" FULL PORT BALL VALVE 2"x600#
BA202	NUTRON RP 2" FULL PORT BALL VALVE
BA203	NUTRON RP 3" LOAD PORT BALL VALVE
BA300	NUTRON CENTURY or EQUAL 1/4" NEEDLE VALVE
NV025	CENTURY or EQUAL 1/2" NEEDLE VALVE
NV050	SWAGelok 1/2" CHECK VALVE
CK050	CROWN or WHEATLY 2" CHECK VALVE - 2000# - S#F: COMMON



V-100	V-200	TK-300	TK-400	P-410
2 PHASE SEPARATOR	FUEL GAS SCRUBBER	100 BBL. TANK	500 GAL. CHEMICAL TANK	CHEMICAL PUMP
CORLIAC or EQUAL	LOTTECH or EQUAL	CORLIAC	GRANBY	TEXTSTEAM
16" OD x 96" H. (406x2438) S/S MAWP: 1440 psi - DT 100' F A#F: COMMON - SER.#: COMMON CRN#: COMMON - YR. BLT. 2005/06	4.5" OD x 30" H. (114 x 762) S/S MAWP: 285 PSI - DT 100' F SER.#: COMMON - YR. BLT. 2005/06 CERTIFICATION No.: COMMON	DOUBLE WALLED TANK 2896mm DIA. x 2438mm HIGH 9'-6" DIA. x 8'-0" HIGH SERIAL #: COMMON	54" H. x 72" L. C/W WYE STRAINER DUAL WALL TANK - S#F: COMMON	MODEL #: M311JAW02 SERIAL #: COMMON W/ SWAGelok - NUPRO RELIEF VALVE

- NOTE**
- PIPE - A106 GR. B - SCH 80
 - FITTINGS - NPT 234 WPB
 - VALVES - NPT 2000#
 - THREADED FITTINGS - 3000#
 - TUBING - 304 SS
 - ALL CONTROLLERS & REGULATORS VENTED TO ATMOSPHERE o/s BUILDING
 - UNDERSIDE OF TANK FLOOR AND BUILDING FLOOR INSULATED

SKID: 7'3" x 22'6"
BUILDING: 8' x 6'



STETTLER OIL & GAS
BOX 652
STETTLER, AB T0C 2L0

DATE	BY	CHKD	APPD	REV	DESCRIPTION

PROJECT NO. AQP-2982

W/P-SOG-1

TRIDENT EXPLORATION

CLIENT

2 PHASE SEPARATOR (6" x 96")
W/ GLOBE CONTRL. VALVE
PIPING & INSTRUMENTATION DIAGRAM

DATE: 2005-02-21
SCALE: NTS
DRAWING NO. 6-250
REVISION NO. 6-250-H-01

This document was created with Win2PDF available at <http://www.win2pdf.com>.
The unregistered version of Win2PDF is for evaluation or non-commercial use only.
This page will not be added after purchasing Win2PDF.