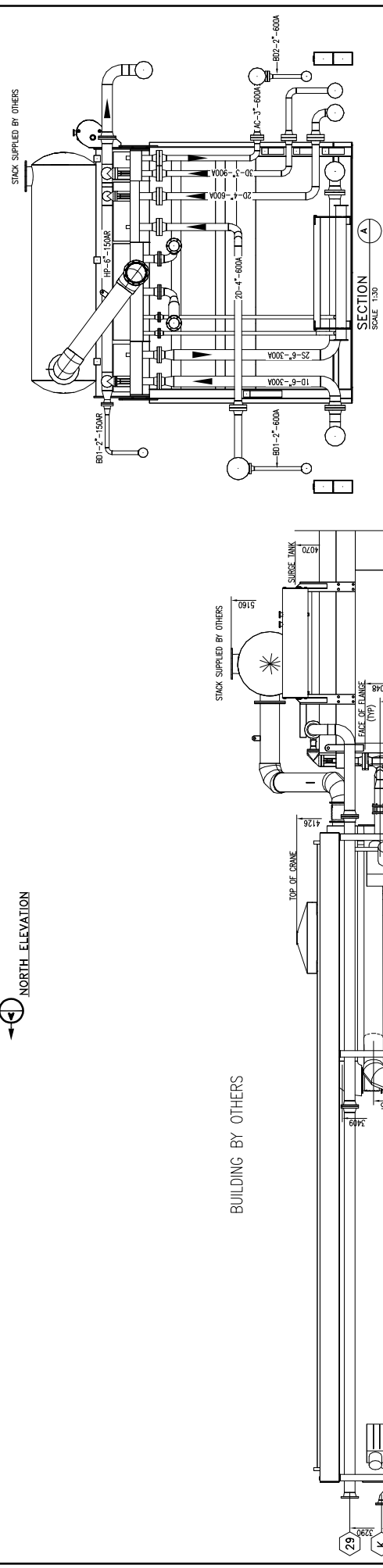
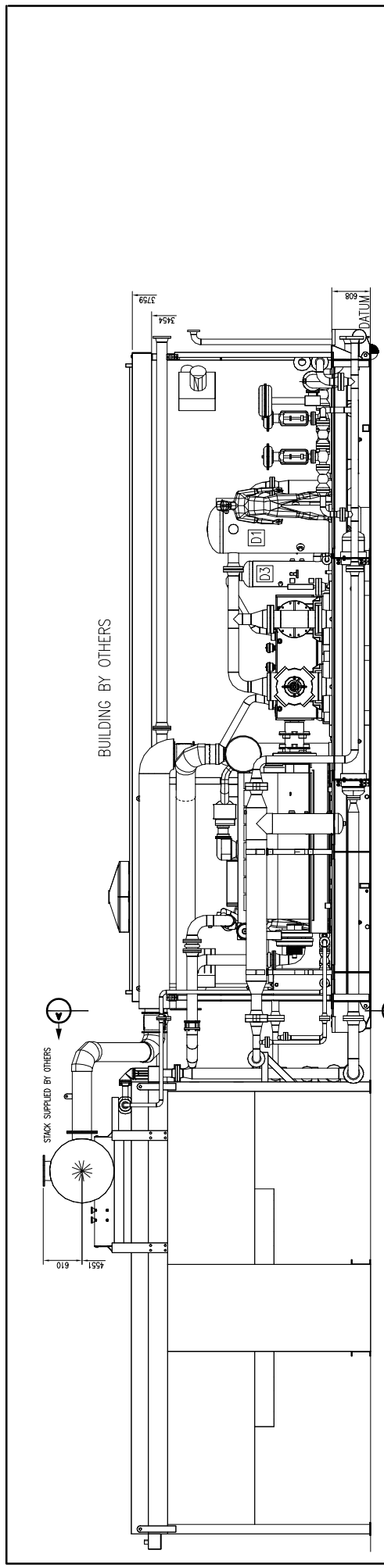


ENERFLEX

DRAWINGS



REV	DESCRIPTION	DATE	DRAWN BY	CHECKED BY
2	AS BUILT	05/17/03	WEN	LE
1	FOR CONSTRUCTION	05/05/17	DRG	DRG

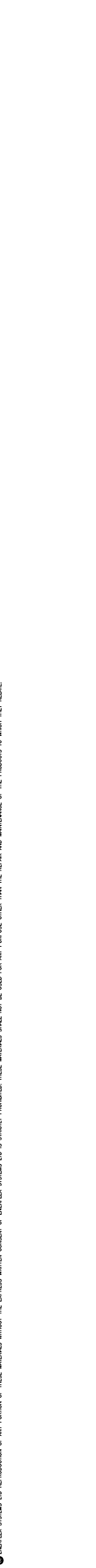
BPX Compression
 4000 W. Main St. - Dept. 48 - Omaha, NE 68104 - 402.333.2888 - 402.333.2887
 www.bpx.com

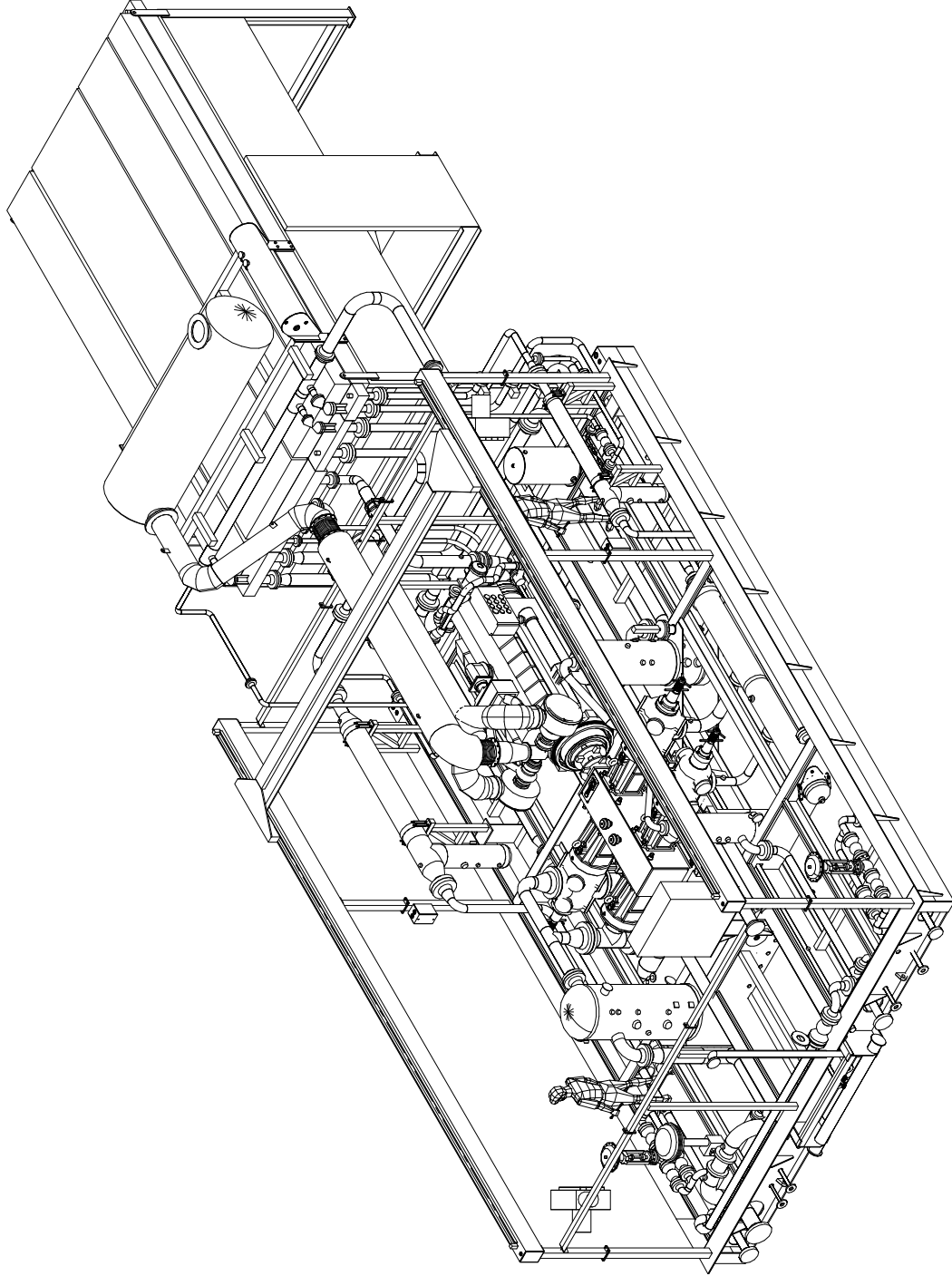
TITLE: ELEVATION VIEWS (K-680)
 ARIEL JGK/A, CATERPILLAR 1600 HP (1600 HP) COMPRESSOR PLANT

FOR: EDEL ENERGY CORPORATION
 CORBETT GAS PLANT

CONSULTANT: BDR ENGINEERING
 1500 S. 16th St. - Lincoln, NE 68502-4100
 DATE: 05/04/06
 DRAWN BY: DRG
 CHECKED BY: DRG
 SCALE: 1:30

DWG. No.: GA050440
OP#: 10
PC2/3





3D VIEW

REV	DESCRIPTION	DATE	DRAWN BY	CHECKED BY
2	AS BUILT	08/17/03	NSN	LE
1	FOR CONSTRUCTION	09/09/17	DRG	DRG

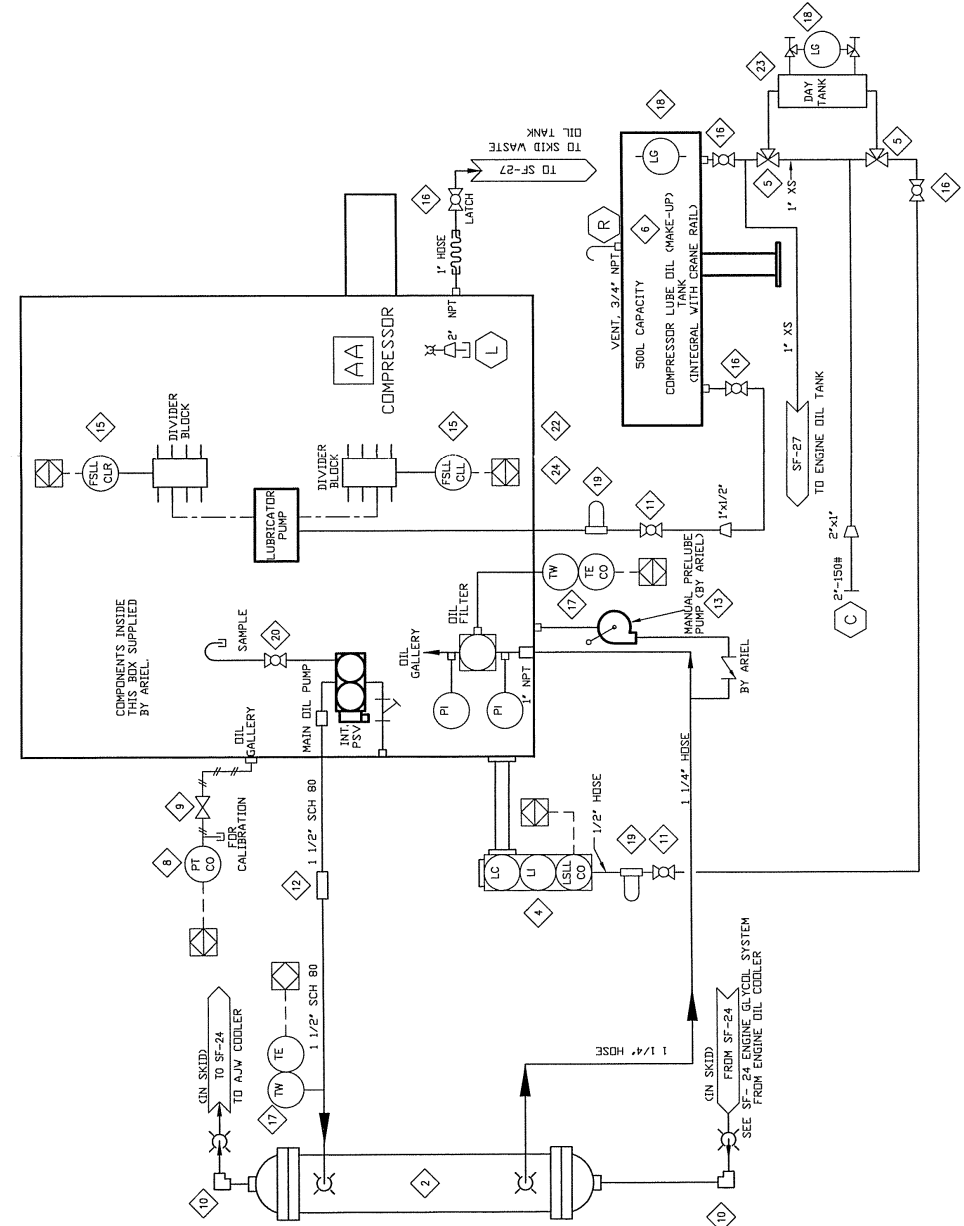
BPX Compression	
300 St. Paul St. - Orange, CA 92668 Tel: 714.261.2800 Fax: 714.261.2807	
www.bpx.com	
TITLE:	3D VIEW (K-680)
FOR:	ARIEL JGK/A, CATERPILLAR COMPRESSOR PACKAGING
CONSULTANT:	EDGE ENERGY CORPORATION
DRAWN BY:	BRD
CHECKED BY:	DRG
DATE:	09/09/17
SCALE:	1:1
DATE:	05/04/06
DESIGN BY:	BRD
CHECKED BY:	DRG
DATE:	05/04/06
SCALE:	1:1
PROJECT NO.:	GA050440
DWG. NO.:	PC3/3
REV. NO.:	10

EDGE ENERGY CORPORATION
CORBETT GAS PLANT
CONSULTANT: BRD ENGINEERING LTD.
DATE: 05/04/06
SCALE: 1:1
DRAWN BY: BRD
CHECKED BY: DRG
DATE: 05/04/06
SCALE: 1:1
PROJECT NO.: GA050440
DWG. NO.: PC3/3
REV. NO.: 10

BILL OF MATERIAL

ITEM	QTY	EFX CODE	DESCRIPTION
2	1	104966	COOLER, LUBE OIL (THERMAL TRANSFER, EX-1024-0)
4	1	107966	CONTROLLER, OIL LEVEL C/V ELECTRIC SWITCH, RP, CSA & BRACKET (REMO, LCE-24)
5	2	121893	VALVE, BALL, 3-WAY, 1" NPT, FULL SS, 800 PSI C/V LOCKING HANDLE (MS, G4)
6	1	110994	27TANK, LUBE OIL MAKEUP, COMPRESSOR, INTEGRAL WITH CRANE RAIL PER EFX CRANE DVG
8	1	107987	TRANSMITTER, PRESSURE, 0-100 PSIG, SWEET, 1/4" NPT (VKA, 81213500)
9	1	102802	VALVE, PLUG, 1/4" TUBE, 316SS (INSTR, SS-494T)
10	2	102844	COUPLING, ELBOW, 90 DEG, 2" STYLE, 90 (DRESSER, 0095-0245-082)
11	2	102849	VALVE, BALL, 1/2" NPT, 2000# WOG, RP, 316SS, NACE C/V (INVAR, CI-RO25204)
12	1	102840	VALVE, BALL, 1/2" NPT, 2000# WOG, RP, 316SS, NACE C/V (INVAR, CI-RO25204)
13	1	115371	PUMP, MANUAL LUBE OIL (PRIMING ORIENTED) (ARIEL)
15	2	112860	SWITCH, DIGITAL, NO-FLOW, PROGRAMMABLE, WHITLOCK (INT-LED-PRG (ARIEL, A-10754)
16	3	102937	VALVE, BALL, 1" NPT, 2000# WOG, RP, 316SS, NACE C/V LOCKING (INVAR, CI-RO25204)
17	2	112350	***TUPLE ASSY C/V T-WELL, 304SS, 3/4" NPT, 607 (VKA, A1813-102-114-607-K-1)
18	2	121755	INDICATOR, LEVEL, SIGHT GLASS WINDOW, 10" BFL CENTERS, IMP FILTR, LVA 30 T4
19	2	121755	FILTER, ASSEMBLY, OIL, 1/2" NPT, 25 MICRON C/V SF-6510 (KENECOR, SAF-65-00-0)
20	1	117547	VALVE, BALL, 1/4" NPT, 2000# WOG, RP, 316SS, NACE C/V (INVAR, CI-RO25204)
21	1	117547	WIRE SUPPORT, COMPRESSOR VIBRATION SENSOR (GGS, V197501949200)
22	1	117546	WIRE SUPPORT, COMPRESSOR SIDE DOOR (GGS, V119204645000)
23	1	1194-REQ	20 GALLON OIL TANK, PER EFX DRAWING

AS-BUILT
DATE DEC 1 2005



REV	DESCRIPTION	DATE	DRAWN BY	CHECKED BY
3	AS-BUILT	05/12/01	MGN	EAM
2	ADD OIL TANK	05/05/04	MGN	DB
1	ISSUE FOR CONSTRUCTION	05/05/03	MGN	DB
0	ISSUE FOR APPROVAL	05/04/03	MGN	DB

EFX Compression
ENERFLEX
4700 47 Street SE Calgary AB Canada T2B 3R1 Canada Tel: +14032365800 Fax: +14032793267
www.enerflex.com

TITLE: **SERVICE FLOW**
COMPRESSOR OIL SYSTEM-JGK/4 FRAME
K-680

FOR: **FORT ENERGY CORPORATION**
CORBETT GAS PLANT

CONSULTANT: BDR ENGINEERING
LSD: 15-10-62-06-WSM
JOB No.: 050440
P.O.: -
DESIGN BY: DB
DATE: 05/04/03
DRAWN BY: MGN
DATE: 05/04/03
CHECKED BY: DB
DATE: 05/04/03
SCALE: 1/8" = 1'-0"
DWG. No.: SF-050440-20
OP# 20

ENERFLEX SYSTEMS LTD REPRODUCTION OF ANY PORTION OF THESE MATERIALS WITHOUT THE EXPRESS WRITTEN CONSENT OF ENERFLEX SYSTEMS LTD IS STRICTLY PROHIBITED.

MATERIAL LIST		
ITEM	QTY	DESCRIPTION
01	3	THRESHOLD, 3/8" X 1/2" X 1/2" NPT X 2-1/2" LONG, UNF, 260° BORE, STEPPED
02	3	THRESHOLD, 3/8" X 1/2" X 1/2" NPT X 2-1/2" LONG, UNF, 260° BORE, STEPPED
03	3	THRESHOLD, 3/8" X 1/2" X 1/2" NPT X 2-1/2" LONG, UNF, 260° BORE, STEPPED

NOTE:

1. PACKING FAILURE SENSOR(S) SHOULD BE SET TO 200°F. SHUTDOWN FOR NEW PACKING. AFTER PACKING IS BROKEN IN, SHUTDOWN TEMPERATURE SHOULD BE ADJUSTED TO 150° (OR 200°F MAX) OF NORMAL OPERATING TEMPERATURE. (ONE PER CYLINDER)
2. OIL SEAL POT AND VACUUM PUMP ASS'Y REQUIRED WHEN CUSTOMER CONNECTING TO FLARE SYSTEM

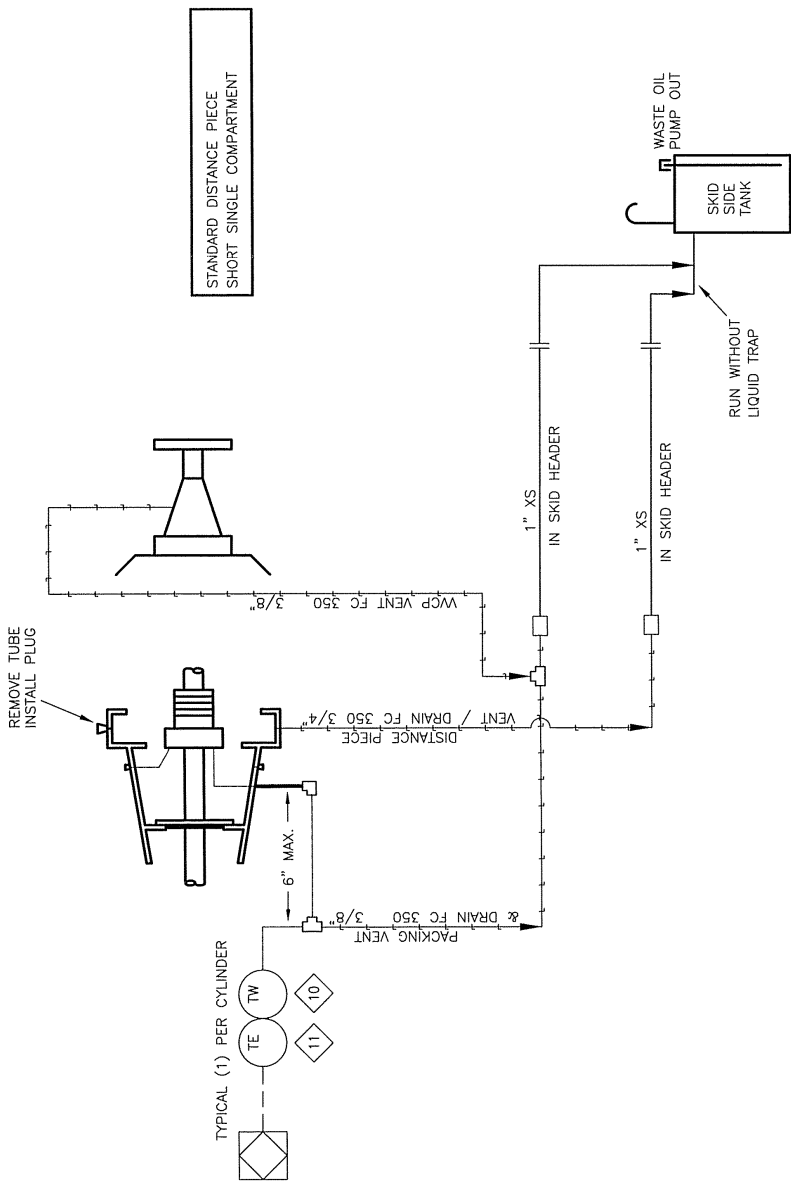
AS-BUILT
DATE DEC 01 2005

REV	DESCRIPTION	DATE	DRAWN BY	CHECKED BY
1	AS-BUILT	05/12/01	MSN	EM
0	ISSUE FOR APPROVAL	05/04/11	MSN	DB

EPX Compression
ENERFLEX

4700 47 Street SE Calgary AB Canada T2B 3R1 Canada Tel: +14032365800 Fax: +14032730367
www.enerflex.com

TITLE:	SERVICE FLOW & DRAIN SYSTEM 0<H2S<100 PPM K-560
FOR:	FORT ENERGY CORPORATION CORBETT GAS PLANT
P.O.:	CONTRACT: BDR ENGINEERING LSD: 15-10-62-06-W5M
SCALE:	DESIGN BY: DB7 DATE: 05/04/11 CHKD BY: DB7 DATE: 05/04/11 APP'D BY: [Signature] SCALE: NIS
OP#	DWG. No.: 050440 JOB No.: 050440
21	SF-050440-21



© ENERFLEX SYSTEMS LTD REPRODUCTION OF ANY PORTION OF THESE MATERIALS WITHOUT THE EXPRESS WRITTEN CONSENT OF ENERFLEX SYSTEMS LTD IS STRICTLY PROHIBITED.

BILL OF MATERIAL

ITEM	QTY	EFX CODE	DESCRIPTION
10	2	102833	VALVE, BALL, 1-1/2" NPT, 2000# WOG, RP, 316SS, MAKE C/W [NAVED CI-R152520A]
11	2	102830	STRAINER, 1-1/2" NPT, 1480 P50 WMP, CS, 1/2" SS SCREEN [ALTA, 75-600]
12	1	115559	FILTER, 1-1/2" NPT C/W 200-35-04 ELEMENT ASS PLUG [PARKER, C3120N-040-04-543]
13	2	102850	VALVE, BALL, 1/4" NPT, 2000# WOG, RP, 316SS, MAKE C/W [NAVED CI-R102520A]
14	3	107911	GAUGE, PRESSURE, BM, 2-1/2" LF, 0-300 PSI DUAL, 1/4" NPT [MKA, 233.53]
15	1	102849	VALVE, BALL, 1/2" NPT, 2000# WOG, RP, 316SS, MAKE C/W [NAVED CI-R155520A]
16	1	104863	REGULATOR, 1" NPT, DI, 3/8" OR, 35-80# SPR RING, SET @ 75 PSIG [FISHER, 827-694]
17	2	102792	HOSE, RELAY, GAS, 1-1/2" NPT, MAMP 450 PSI [TD, RLW2686300120]
18	2	104855	HOSE, BRANDED STEEL, 2" NPT X MALE NPT UNION X 1/2" LONG
20	3	NPN-REQ	VALVE/SOLENOID, 3-WAY, 24VDC/5A/SP, EPIC 115PSI/NC SS [ASCO, EFR320202-24]
21	1	102758	STARTER, AIR/GAS, STD 150-60 PSIG, INERTA DUAL [TD, TURBOSPART, T112-6001-816]
22	1	102741	ELBOW, STARTER EXHAUST, 90 DEG, SR, 3" NPT, CS [TD, T100-27800]
23	1	120174	HOSE, STEEL BRANDED, 3" - #150 RF 4-3" - #150 RF, 10' LONG
26	4	102802	VALVE, PLUG, 1/4" TUBE, 316SS, I, NURD, SS-494T
27	1	106497	FLANGE, RF, SHERWID, 3" - #150, SA-105N
28	1	107894	TRANSMITTER, PRESSURE, -30 IN/20 PSIG, SHEET, 1/4" [MKA B92.13.500]
29	1	NPN-REQ	TRANSDUKER, I/P, 4-20MA INPUT, 3-15 PSIG OUTPUT, XP [ARCHILD TD-7000-401E-2]
30	1	116812	VALVE, BALL, 3-WAY, 1/4" TUBE, 316SS, 125# ORifice [WHITEY, SS-4225A]
31	1	118790	SWITCH, PRESSURE, 1500 WMP, 18-150R, 6-138F, XP [CDS, 6800CE16]
32	1	116700	VALVE, SWITCHING, 3-WAY, 1/2" NPT, 40-100 PSI [FISHER, 184A-81]

- NOTES:
1. VENT START AND FUEL TO SEPARATE VENT HEADER.
 2. ALL SERVICE LINES OPERATING ABOVE 103KPA(15 PSI) MUST BE PRESSURE TESTED PER THE PROCEDURE IN THE QC MANUAL.
 3. INSTRUMENT REGULATORS, C/W VENTED BONNETS ARE NOT REQUIRED ON INSTRUMENT AIR SERVICE.
 4. SWEET CLEAN DRY GAS REQUIRED FOR BOTH FUEL AND START GAS.

AS-BUILT

DATE: DEC 01 2005

REV	DESCRIPTION	DATE	DRAWN BY	CHECKED BY
4	AS-BUILT	05/12/01	MGN	EAM
3	ADDED ITEM 32	05/07/20	JLE	
2	UPDATE BOM	06/05/18	MGN	DB
1	ISSUE FOR CONSTRUCTION	05/04/27	MGN	DB
0	ISSUE FOR APPROVAL	05/04/11	MGN	DB



4700 47 Street SE Calgary AB Canada T2B 3R1 Canada Tel: +1.403.238.6600 Fax: +1.403.279.0387
www.enerflex.com

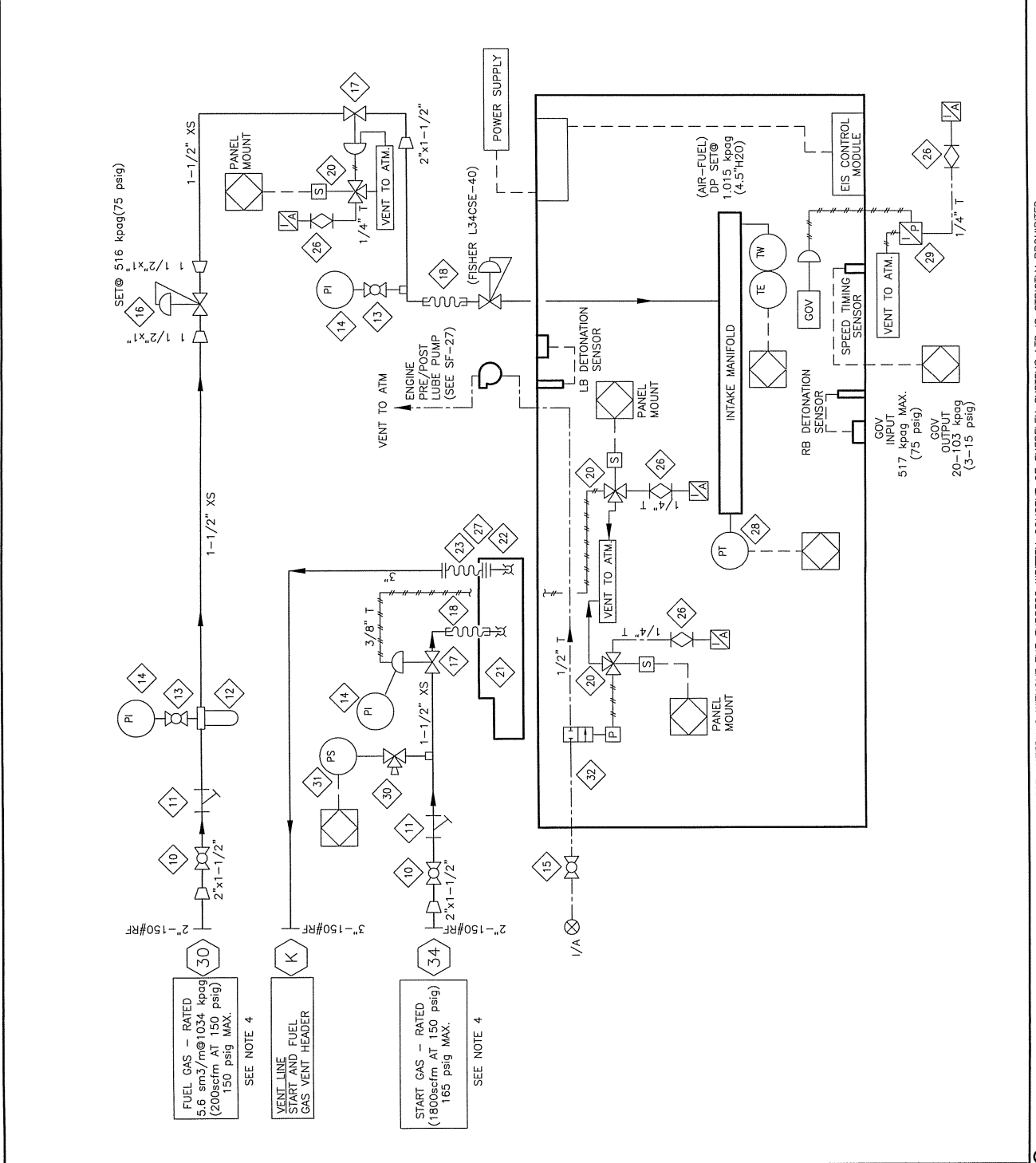
TITLE: SERVICE FLOW START GAS SYSTEM
CATERPILLAR G3516-TALE

FOR: FORT ENERGY CORPORATION
CORBETT GAS PLANT (K-680)

CONSULTANT: BDR ENGINEERING
LSD: 15-10-62-06-W5M
JOB No.: 050440

DESIGN BY: MGN DATE: 05/04/11
CHECKED BY: JLE DATE: 05/04/11
SCALE: NTS APPROVED BY: [Signature] DATE: 05/04/11

DWG. No. SF-050440-22
OP# 22



ENERFLEX SYSTEMS LTD REPRODUCTION OF ANY PORTION OF THESE MATERIALS WITHOUT THE EXPRESS WRITTEN CONSENT OF ENERFLEX SYSTEMS LTD IS STRICTLY PROHIBITED.

BILL OF MATERIAL

ITEM	QTY	PART #	DESCRIPTION
10	1	1156828	TANK, SERVICE 2-COMPARTMENT, 150LBS., ALUMINUM AS PER DRAWING
11	7	108262	VALVE, BALL, 3/4" NPT, 2000 WOG, BR, CS, WAGE C/A LOCKING ENDRON, T2-R023203
12	1	108268	VALVE, BALL, 1/2" NPT, 2000 WOG, BR, CS, WAGE C/A LOCKING ENDRON, T2-R023203
13	1	108268	VALVE, BALL, 1/2" NPT, 2000 WOG, BR, CS, WAGE C/A LOCKING ENDRON, T2-R023203
14	3	108268	VALVE, BALL, 1/2" NPT, 2000 WOG, BR, CS, WAGE C/A LOCKING ENDRON, T2-R023203
15	2	108268	VALVE, BALL, 1/2" NPT, 2000 WOG, BR, CS, WAGE C/A LOCKING ENDRON, T2-R023203
16	2	108268	VALVE, BALL, 1/2" NPT, 2000 WOG, BR, CS, WAGE C/A LOCKING ENDRON, T2-R023203
17	2	108268	VALVE, BALL, 1/2" NPT, 2000 WOG, BR, CS, WAGE C/A LOCKING ENDRON, T2-R023203
18	2	108268	VALVE, BALL, 1/2" NPT, 2000 WOG, BR, CS, WAGE C/A LOCKING ENDRON, T2-R023203
19	2	108268	VALVE, BALL, 1/2" NPT, 2000 WOG, BR, CS, WAGE C/A LOCKING ENDRON, T2-R023203
20	1	107477	VALVE, BALL, 3/4" NPT, 2000 WOG, TP, CS, C/A LOCKING HANDLE E, ENDRON, T2-R023203
21	2	107477	VALVE, BALL, 3/4" NPT, 2000 WOG, TP, CS, C/A LOCKING HANDLE E, ENDRON, T2-R023203
22	1	108273	VALVE, BALL, 3/4" NPT, 2000 WOG, BR, CS, WAGE C/A LOCKING ENDRON, T2-R023203
23	1	108273	VALVE, BALL, 3/4" NPT, 2000 WOG, BR, CS, WAGE C/A LOCKING ENDRON, T2-R023203
24	1	108273	VALVE, BALL, 3/4" NPT, 2000 WOG, BR, CS, WAGE C/A LOCKING ENDRON, T2-R023203
25	1	108273	VALVE, BALL, 3/4" NPT, 2000 WOG, BR, CS, WAGE C/A LOCKING ENDRON, T2-R023203
26	1	108273	VALVE, BALL, 3/4" NPT, 2000 WOG, BR, CS, WAGE C/A LOCKING ENDRON, T2-R023203
27	1	108273	VALVE, BALL, 3/4" NPT, 2000 WOG, BR, CS, WAGE C/A LOCKING ENDRON, T2-R023203
28	6	115804	THEMOMETER, 316SS, 316 STALE, 5/8, 1/2" X 3/4" NPTM, LH-57, 200° F, 200° F, 200° F
29	2	107908	COUPLER, K TYPE, 316SS, 7/32" (THERMOKINETICS, K18P-316S1007, 5882X000-0048-393)
30	4	107940	GAUGE, TEMP, 3" DIA., 4" STEM, 0-250 DEGF, DUAL, 1/2" NPT, (TREN, 33440)
31	1	115643	VALVE, GLOBE, 1" 3000 LB, CS, SWEET, (NAVED, G-RUB03848)
32	1	12264	EXPANSION JOINT, RUBBER, 6" X 150# OF (RAUMEX, R-713)
33	1	107894	GAUGE, PRESSURE, CBN, 2" DIA., 0-200 PSI, DUAL, 1/4" NPT, (TAKA, 11110)
34	1	107894	GAUGE, PRESSURE, CBN, 2" DIA., 0-200 PSI, DUAL, 1/4" NPT, (TAKA, 11110)

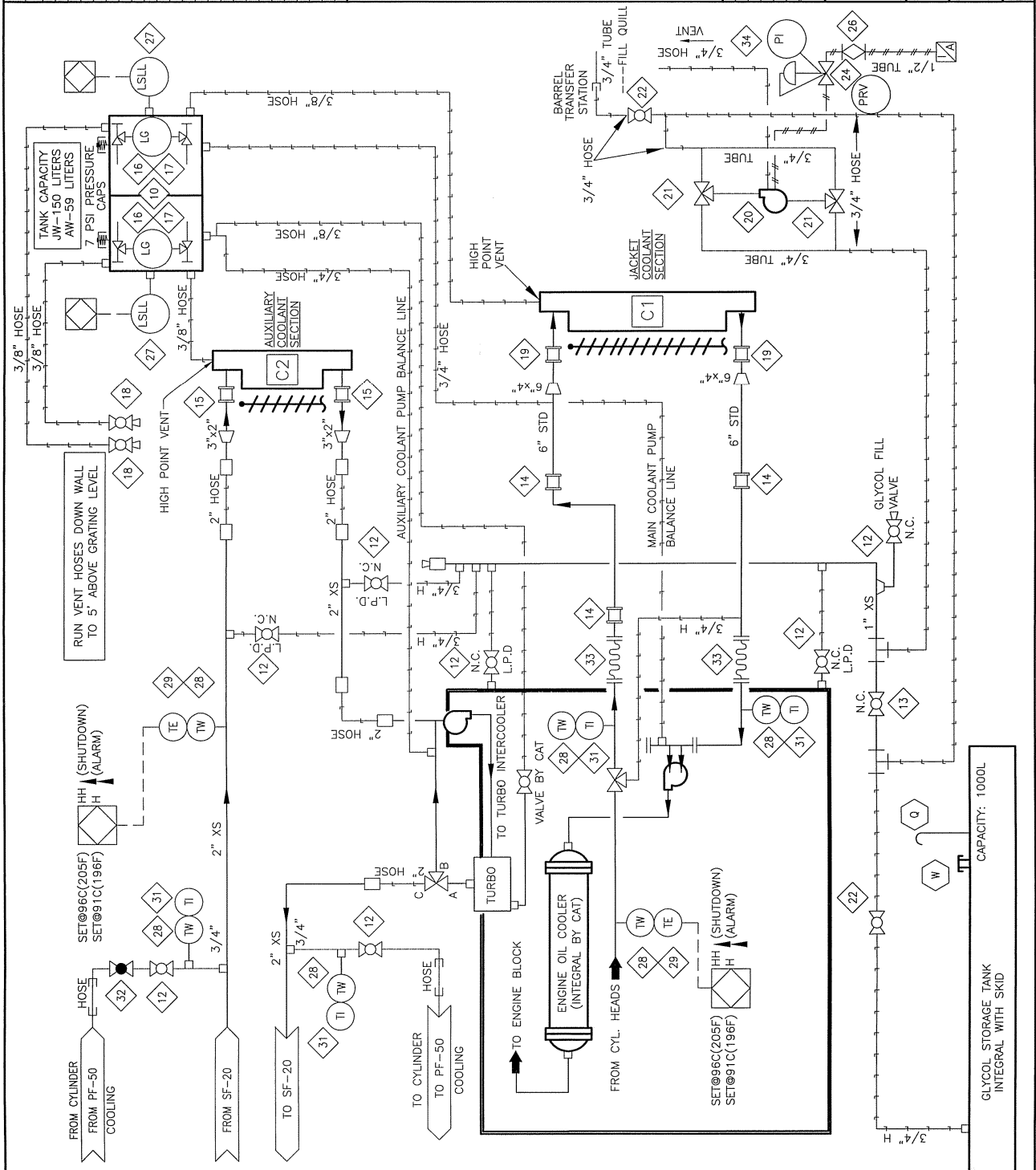
ENGINE WATER CAPACITY
205 LITERS (54 GAL)

AS-BUILT
DATE DEC 01 2005

REV	DESCRIPTION	DATE	DRAWN BY	CHECKED BY
2	AS-BUILT	05/11/22	MGN/ALE	EM/ALE
1	ISSUED FOR CONSTRUCTION	05/04/20	MGN	DB
0	ISSUED FOR CONSTRUCTION	05/05/02	MGN	DB

ENERFLEX
Compression
4700 47 Street SE Calgary AB Canada T2B 3R1 Canada Tel: +1403236.6800 Fax: +1403279.0257
www.enerflex.com

FOR:
SERVICE FLOW
ENGINE GLYCOL SYSTEM
ARIEL JGK/4, CAT. G3516TALE, AXC 144ZF
CORBETT GAS PLANT (K-680)
LSD: 15-10-62-06-W5M
JOB No.: 050440
DWG. No.: SF-050440-24
OP# 24



ENERFLEX SYSTEMS LTD REPRODUCTION OF ANY PORTION OF THESE MATERIALS WITHOUT THE EXPRESS WRITTEN CONSENT OF ENERFLEX SYSTEMS LTD IS STRICTLY PROHIBITED.

BILL OF MATERIAL

ITEM	QTY	EFX CODE	DESCRIPTION
10	2	104682	*EXPANSION BELLOW, 12" 150# INTERNAL FLANGES C/W 2" COLLAR & SS LINER X 12" LONG
11	2	NPN-REQ	AIR FILTER BOX SUPPLIED BY CAT
12	2	112314	*GUSE, STRAIGHT, RUBBER, 12" ID [GOODPRACT. W075-192]
13	30	104562	EXHAUST TUBING, MECHANICAL, 12" OD X 10 GAUGE (1.34" WALL), ERW
17	1	102950	*VALVE, BALL, 1/4" NPT, 2000# WOD, RP, 316SS, NACE C/W (NACOD, C1-RO2320)
19	20	122061	***INSULATION, FOR 12" 150# SS EXHAUST LINE, NO AIR SPACE, CUSTOM
20	1	NPN-REQ	*EXPANSION BELLOW, 8"-150#, SUPPLIED BY CAT
21	1	102807	*VALVE, NEEDLE, 3/8" TUBE, CS [MIREX, S-1195]
23	20	104561	*EXHAUST TUBING, MECHANICAL, 12" ID X 11 GAUGE (1.25" WALL), 316LSS
42	2	112185	*ELBOW, EXHAUST, 90 DEG, SR, 12" OD, 10 GAUGE, CS

Exhaust (B25)
DATE-TIME EXPORTED: 2005-05-18-13:34

NOTE:
1. MAXIMUM PERMISSIBLE BACK PRESSURE
(1775 BHP @1000 RPM IS 12".00 INCHES
H2O)

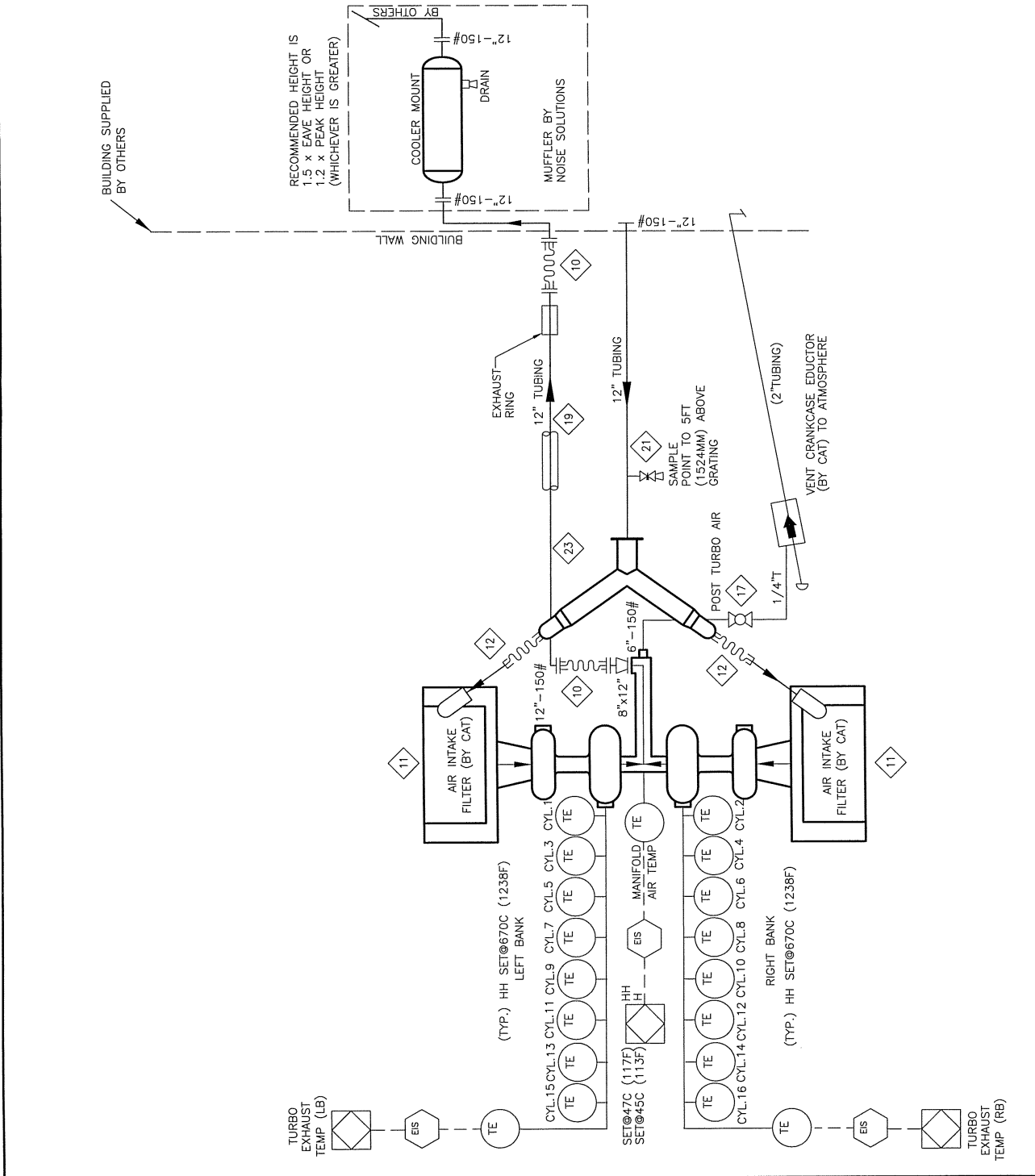
AS-BUILT
DATE DEC 01 2005

REV	DESCRIPTION	DATE	DRAWN BY	CHECKED BY
4	AS-BUILT	05/12/01	MGN	EAM/ALE
3	ADD ONE ITEM #10/UPDATED DRAWING	05/06/02	DRD	
2	UPDATE BOM	05/05/19	MGN	DB
1	ISSUED FOR CONSTRUCTION	05/04/27	MGN	DB
0	ISSUED FOR APPROVAL	05/04/13	MGN	DB

ENERFLEX
Compression

4700 47 Street SE Calgary AB Canada T2B 3R1 Canada Tel: +1.403.236.6800 Fax: +1.403.279.0367
www.enerflex.com

TITLE: SERVICE FLOW
AIR & EXHAUST SYSTEMS
ARIEL JCK/4, CAT. G3516 TALE, AXC 144ZF
FOR: FORT ENERGY CORPORATION
CORBETT GAS PLANT (K-680)
LSD: 15-10-62-06-W5M
JOB No.: 050440
P.O.:
DRAWN BY: MGN DATE: 05/04/13
CHKD BY: JCK DATE: 05/04/13
SCALE: NTS
DWG. No.: SF-050440-26
OP# 26



© ENERFLEX SYSTEMS LTD REPRODUCTION OF ANY PORTION OF THESE MATERIALS WITHOUT THE EXPRESS WRITTEN CONSENT OF ENERFLEX SYSTEMS LTD IS STRICTLY PROHIBITED.

ITEM	QTY	EFX CODE	DESCRIPTION
10	2	121883	VALVE BALL 3-WAY, 1" NPT, FULL SS, 800 PSIG (MS-C-1)
12	1	102849	VALVE BALL 1/2" NPT, 2000# WOG, RP, 316SS, MAKE C/M [MANCO, CI-R05200A]
13	1	121735	FILTER, ASSEMBLY, OIL 1/2" NPT, 25 MICRON, C/M SF6310 [KINGCOR, SAF-05-00-0]
14	1	107868	CONTROLLER, OIL LEVEL C/M ELECTRIC SWITCH, 9P, CSA C/M DOOR MT [KANDU, LGE-17]
16	2	102845	COUPLING STRAIGHT, 2", STILE 90 [DRESSER, 0090-006-082]
17	1	102878	PUMP DIAPHRAGM, TYP, ALUMINUM BUNA, #02-10001 [WALDEN TZA]
18	4	102876	VALVE BALL 3/4" NPT, 2000# WOG, RP, CS, MAKE C/M LOCKING [NUTRON, TI-R075205]
20	1	KNP-RED	IGNITION SYSTEM BY CAT, CSA CLASSI, DIV2, BY CAT
21	1	KNP-RED	SPARKNESS (IGNITION SYSTEM) CSA CLASSI, DIV2, BY CAT
22	1	KNP-RED	SPARKNESS X TYPE THERMOCOUPLE BY CAT
23	1	KNP-RED	SPARKNESS X TYPE THERMOCOUPLE BY CAT
32	1	102868	VALVE NEEDLE 1/4" TUBE, 316SS [WHITE, SS-154]
33	1	102825	TRANSMITTER, PRESSURE 0-180 PSIG, SHEET 1/4" NPT [MKA, 80213.500]
34	1	115604	INDICATOR, LEVEL, SIGHT GLASS WINDOW, 10" BOLT CENTERS, [MP FILTR, LVA 30 1A]
35	1	115602	X-THERMOCOUPLE, X TYPE, 316SS [THERMOMETRICS, K726-316-S-007.5-R-82000-0408]
45	1	102872	VALVE BALL 2" NPT, 2000# WOG, RP, 316SS, MAKE C/M LOCKING [MANCO, CI-R05200A]
50	1	104872	REGULATOR 1/2" NPT, ALUM, 0-150A, TAPPED (W/O PI) [FISHER, 01297-801/SPEC]
55	1	102849	VALVE BALL 1/2" NPT, 2000# WOG, RP, 316SS, MAKE C/M [MANCO, CI-R05200A]
60	1	102849	VALVE BALL 1/2" NPT, 2000# WOG, RP, 316SS, MAKE C/M [MANCO, CI-R05200A]
65	1	102849	VALVE BALL 1/2" NPT, 2000# WOG, RP, 316SS, MAKE C/M [MANCO, CI-R05200A]
66	1	102837	VALVE BALL 1" NPT, 2000# WOG, RP, 316SS, MAKE C/M LOCKING [MANCO, CI-R05200A]
70	2	102837	VALVE BALL 1" NPT, 2000# WOG, RP, 316SS, MAKE C/M LOCKING [MANCO, CI-R05200A]

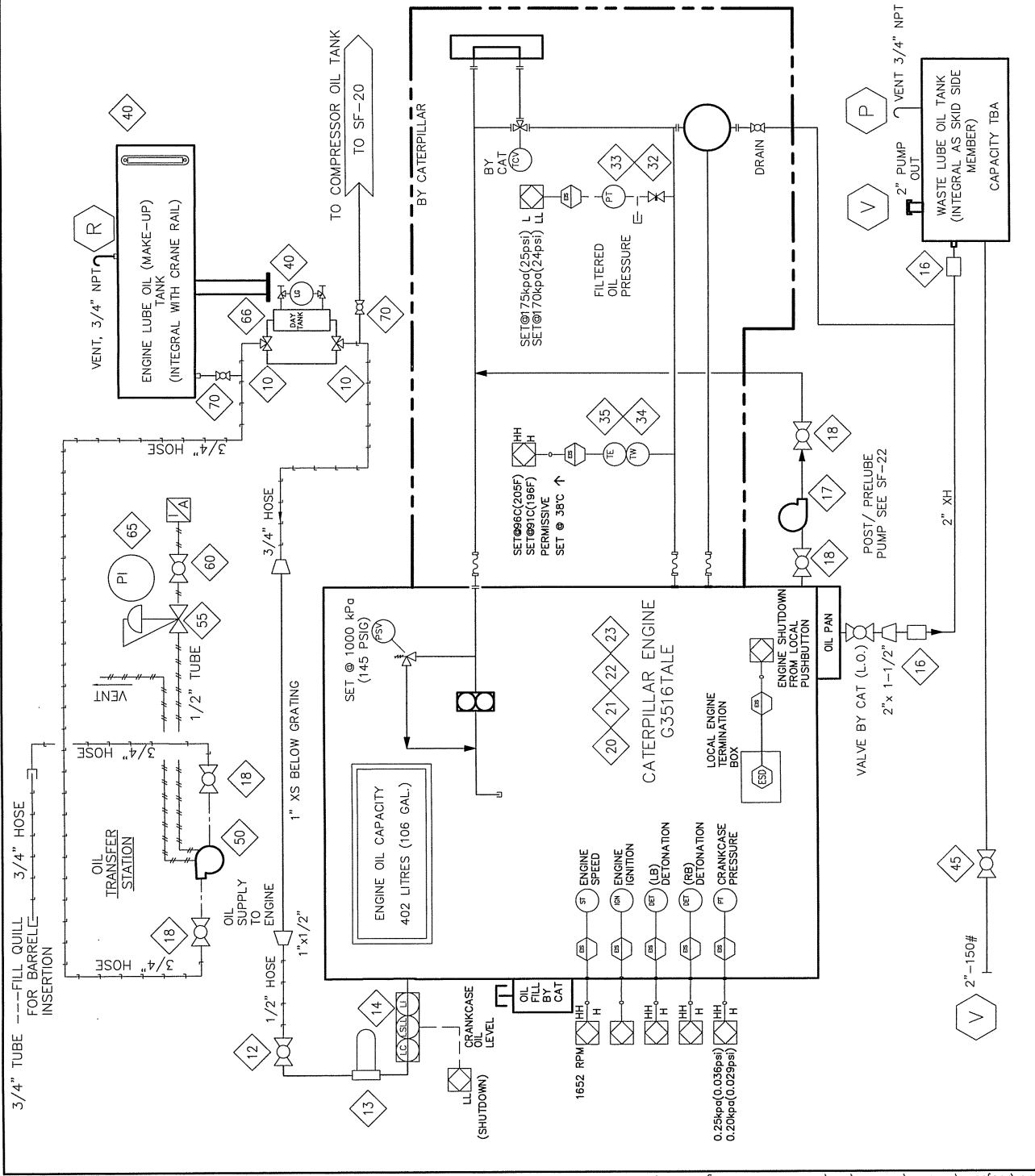
NOTE:
1. 1/2" PLUGGED SAMPLE POINTS TO BE PROVIDED.

AS-BUILT
DATE DEC 01 2005

REV	DESCRIPTION	DATE	DRAWN BY	CHECKED BY
3	AS-BUILT	05/12/01	MCN	EMW/JLE
2	ADD OIL TANK	05/05/04	MCN	DB
1	ISSUED FOR CONSTRUCTION	05/05/03	MCN	DB
0	ISSUED FOR APPROVAL	05/04/03	MCN	DB

ENERFLEX
Compression
4700 47 Street SE Calgary AB Canada T2B 3R1 Canada Tel: +1.403.236.6800 Fax: +1.403.279.0367
www.enerflex.com

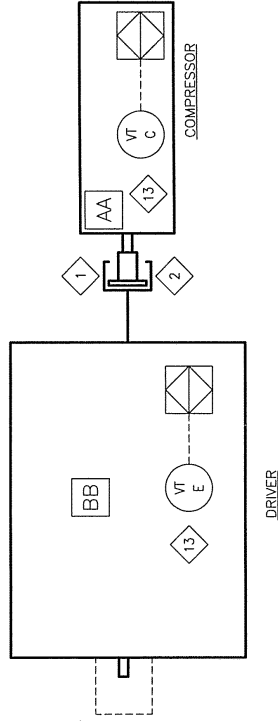
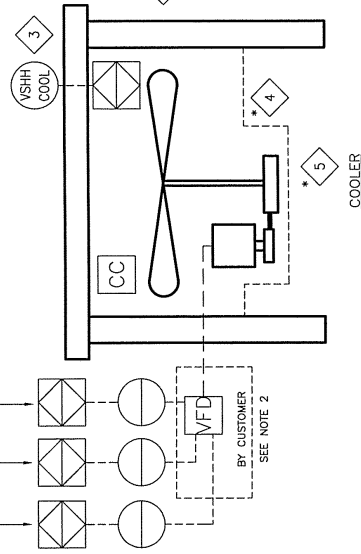
TITLE: SERVICE FLOW ENGINE OIL
FOR: AREL JGK/4, CAT, G3516 TALE, AXC 144ZF
CONSULTANT: BDR ENGINEERING
P.O.: FORT ENERGY CORPORATION CORBETT GAS PLANT (K-680)
LSD: 15-10-62-06-W5M
JOB No.: 050440
DWG. No.: SF-050440-27
OP# 27



© ENERFLEX SYSTEMS LTD REPRODUCTION OF ANY PORTION OF THESE MATERIALS WITHOUT THE EXPRESS WRITTEN CONSENT OF ENERFLEX SYSTEMS LTD IS STRICTLY PROHIBITED.

DESCRIPTION	SHEAVE PICTH	RPM															
ENGINE SHAFT	TBD	TBD															
JACK SHAFT	N/A	N/A															
ENGINE END	N/A	N/A </tr <tr> <td>COOLER END</td> <td>N/A</td> <td>N/A</td> </tr> <tr> <td>IDLER</td> <td>N/A</td> <td>N/A</td> </tr> <tr> <td>COOLER END</td> <td>N/A</td> <td>N/A</td> </tr> <tr> <td>COOLER SHAFT</td> <td>TBD</td> <td>TBD</td> </tr> <tr> <td>MOTOR SHAFT</td> <td>TBD</td> <td>TBD</td> </tr>	COOLER END	N/A	N/A	IDLER	N/A	N/A	COOLER END	N/A	N/A	COOLER SHAFT	TBD	TBD	MOTOR SHAFT	TBD	TBD
COOLER END	N/A	N/A															
IDLER	N/A	N/A															
COOLER END	N/A	N/A															
COOLER SHAFT	TBD	TBD															
MOTOR SHAFT	TBD	TBD															

DISCRETE OUTPUT, VFD ON/OFF SIGNAL
ANALOG OUTPUT, VFD RPM SIGNAL
DISCRETE INPUT, VFD STATUS SIGNAL



BILL OF MATERIAL

ITEM	QTY	EFX CODE	DESCRIPTION
1	1	11558	COUPLING, ADAPTER TYPE 2B-3" OD 1/2" X 6" C/W STEEL HUB (FORMERLY FS09D-28B-3C)
2	1	11559	SOFT COUPLING, FLEXIBLES, ENERGY RES. TPB 1/2" X 6" PER CODE #11-10
3	1	10324	COOLER, 1/2" X 6" X 6" ELECTRIC C/W MANUAL RESET (AMPHIT, 52)
4	1	N/A	COOLER, 1/2" X 6" X 6" ELECTRIC C/W MANUAL RESET (AMPHIT, 52)
5	1	N/A	BUSSES AND BELTS SUPPLIED BY COOLER MANUFACTURER - INFORMATION IN MANUAL
10	1	N/A	ENGINE SHAFT BELT GUARD
13	2	104786	TRANSMITTER, IBERDROLA, 4-20MA, 24VDC CSA IS CENGLAS (METRIX, ST5494E-121-325-01)

REV. OF MATERIAL: M 124565 - SERVICE FROM DRIVE TRAIN A1478, 4310
DATE-TIME REVISION: 2005-01-24-15:28

AS-BUILT
DATE: DEC 01 2005

- NOTE:
1. * SUPPLIED BY VENDOR
2. WIRING FROM PANEL TO CUSTOMER
VFD BY CUSTOMER.

REV	DESCRIPTION	DATE	DRAWN BY	CHECKED BY
3	AS-BUILT	05/12/01	MGN	EAM/ALE
2	REVISED COUPLING	05/08/17	DRD	
1	ISSUED FOR CONSTRUCTION	05/04/27	MGN	DB
0	FOR APPROVAL	05/04/13	MGN	DB

EFX Compression
ENERFLEX

4700 47 Street SE Calgary AB Canada T2B 3K1 Canada Tel: +1-403-235-5900 Fax: +1-403-278-0367
www.enerflex.com

TITLE: SERVICE FLOW DRIVE TRAIN
ARIEL J6K/4, CAT. 3516 TALE AIR X 144ZF
A1-478-43TG (OP. 28)

FOR: FORT ENERGY CORPORATION
CORBETT GAS PLANT (K-680)

CONSULTANT: BDR ENGINEERING
P.O.: --
DRAWN BY: MGN
DATE: 05/04/13
SCALE: NTS
DESIGN BY: PR
DATE: --
APPROV BY: [Signature]
DATE: --
DWG. No.: SF-050440-28
JOB No.: US0440
OP# 28

ITEM	QTY	EFX CODE	DESCRIPTION
7	2	104647	HEATER, ELECTRIC, 20 KW, 480V/3/60HZ, XP, CSA, RUFFNECK, FM16-48856A-201
8	1	104651	TERMINAL STRIP, 5-25 BGC RANGE, 182/240V, XP, CSA, WALL MOUNT, DEFENSE, XT-310
			BILL OF MATERIAL
			H BASE TEMPLATE - ASSEMBLY, HEATERS, A1478

BUILDING EQUIPMENT AND CONTROLS

AS-BUILT
DATE DEC 01 2005

REV	DESCRIPTION	DATE	DRAWN BY	CHECKED BY
2	AS-BUILT	05/12/01	MGN	EAM/JLE
1	ISSUED FOR CONSTRUCTION	05/08/00	DH	JLE
0	ISSUED FOR APPROVAL	05/04/13	MGN	DB

ENERFLEX Compression
 4709 47 Street SE Calgary AB Canada T2B 3R1 Canada Tel. +14032365880 Fax +14032793837
 www.enerflex.com

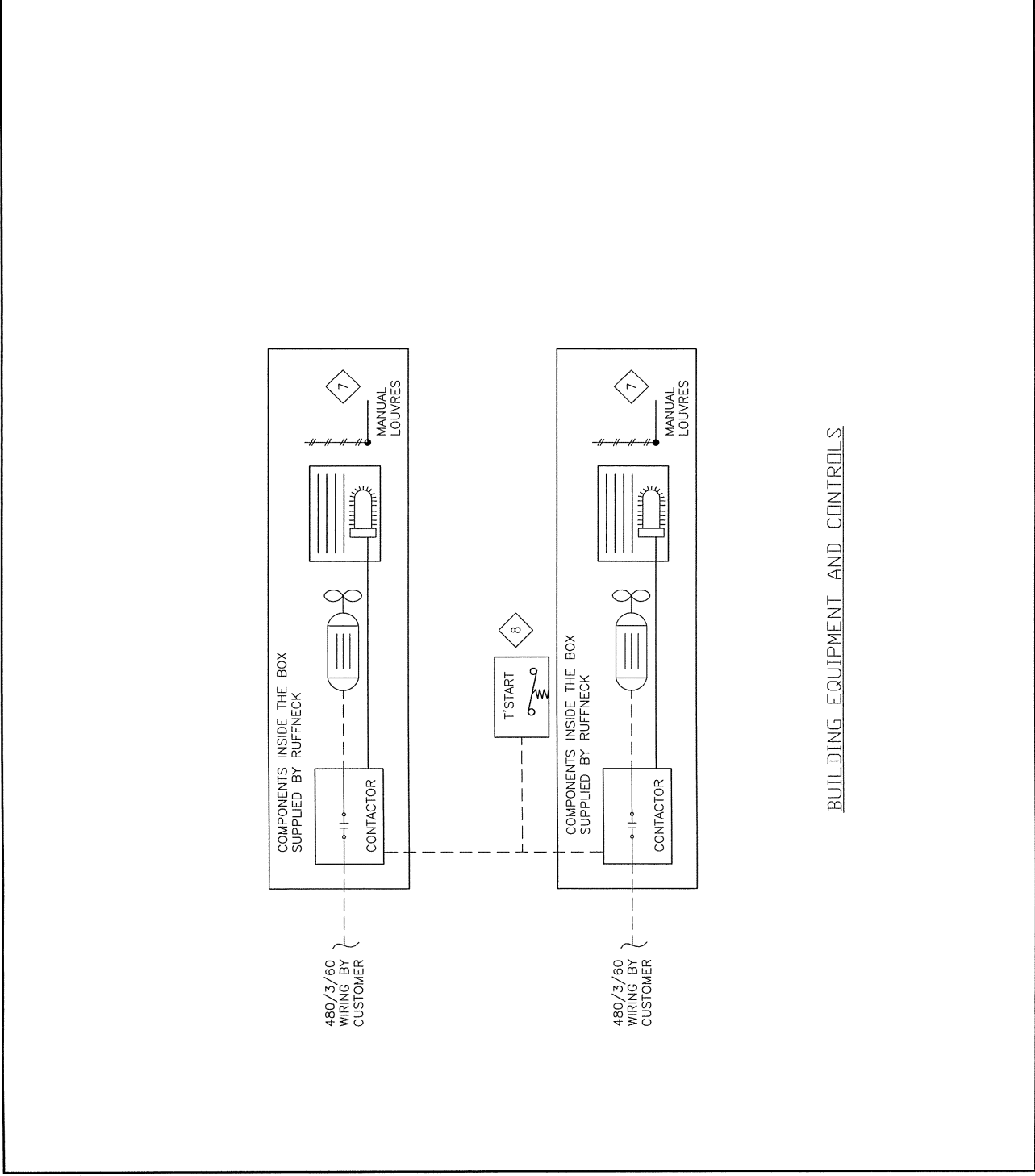
TITLE: SERVICE FLOW BUILDING EQUIPMENT AND CONTROL A1478-4_S1G (OP 72)

FOR: FORT ENERGY CORPORATION
 CORBETT GAS PLANT (K-680)

CONSULTANT: BDR ENGINEERING
 LSD: 15-10-02-06-WSM
 JOB No.: 050440

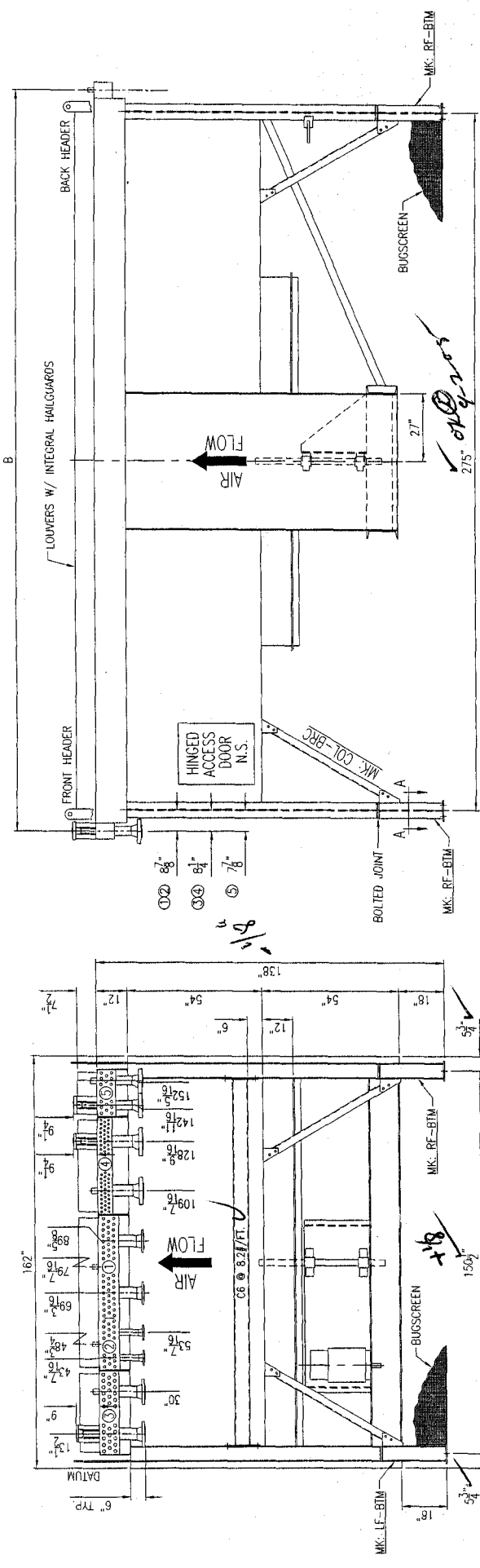
DRAWN BY: MGN (JLE) DATE: --
DESIGN BY: MGN (JLE) DATE: --
SCALE: 1:1 APPROV BY: [Signature] DATE: --

DWG. No.: SF-050440-72
OFF: 72



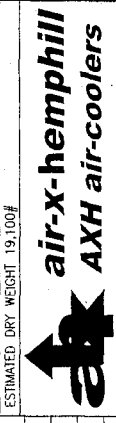
© ENERFLEX SYSTEMS LTD REPRODUCTION OF ANY PORTION OF THESE MATERIALS WITHOUT THE EXPRESS WRITTEN CONSENT OF ENERFLEX SYSTEMS LTD IS STRICTLY PROHIBITED.

ITEM	SERVICE	MAWP	CODE	NOZZLES		COUPLING VENT/TEMP	REF. DIMENSION		BUG SCREEN	DRIVE	FAN	FINISH
				INLET	OUTLET		B	C				
1	EJW (COMBINED) 52 GALS	14 PSI @ 300/-20F	NONE	4-150# RFWN	4-150# RFWN	1-3000#	292.75	-	YES	ELECTRIC MOTOR DRIVE SHEAVES, BELTS, AND GUARDS BY AIR-X-HEMPHILL 50 HP, 1800 RPM, 3P, 60 HZ, 460V, TEFC, VFD, CSA ELECTRIC MOTOR	1449 MOORE 10K, 60 HD, VT 12-BLADE 11" PA, LH ROTATION 244 RPM @ 4.3 HP REQ'D WITH .625 x .3125 KWY.	STRUCTURE STD. PRIMER W/ WARM GRAY ENAMEL TOP COAT
2	AUX-W (COMBINED) 26 GALS	14 PSI @ 300/-20F	NONE	2-150# RFWN	2-150# RFWN	2-300# RFWN	292.75	-				
3	IC-1	645 PSI @ 350/-40F	ASME	4-300# RFWN	4-300# RFWN	1-6000#	291.50	-				
4	IC-2	1292 PSI @ 350/-40F	ASME	4-600# RFWN	4-600# RFWN	1-6000#	291.50	-				
5	AC	1935 PSI @ 350/-40F	ASME	3-900# RFWN	3-900# RFWN	1-6000#	290.75	-				FAN GUARD GALVANIZED

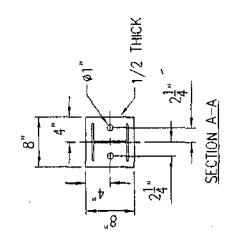


RELEASED
FABRICATION OF THIS
ORDER HAS BEGUN

ESTIMATED DRY WEIGHT 19,100#		FOR: ENERFLEX
P.O. NO: 0581222	CUST. TAG: 050440	USER: IRIENT EXP.
JOB NO: 54096	WORK ORDER NO: -	DATE: 07/19/05
DR: LES	CK: M.B.	DATE: 07/19/05
BY: -	APP: -	DATE: 07/19/05
REV: -	DESCRIPTION: REVISION DESCRIPTION	REV: 0



CERTIFIED DRAWING FOR:
MODEL 144 ZF QUANTITY: 1
DWG. NO. 54096-CRT
SCALE: FULL DATE: 07/19/05



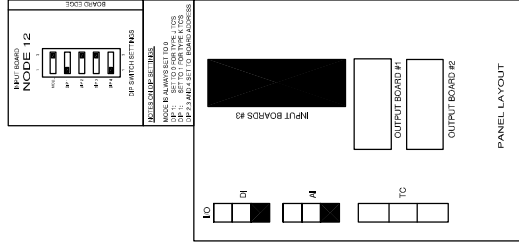
Visual = MKD 1) Buff Fig. Faces 2) Touch-up Paint
Dim 2) = OK 098-05

NON-INCENDIVE
ANALOG
BOARD #3

TERM	COLOR	+/-	FUNC	DESCRIPTION
1	WHITE	+	A01	SPARE
2	BLACK	-		
3	WHITE	+	A02	SPARE
4	BLACK	-		
5	WHITE	+	A03	SPARE
6	BLACK	-		
7	WHITE	+	A04	SPARE
8	BLACK	-		
9	WHITE	+	A05	SPARE
10	BLACK	-		
11	WHITE	+	A06	SPARE
12	BLACK	-		
13	WHITE	+	A07	SPARE
14	BLACK	-		
15	WHITE	+	A08	SPARE
16	BLACK	-		
17		+	CP3	
18		+	CP4	
19		-	END	
20		+	SLICE V	
21		-	END	
22		-	EARTH	
23	BLACK	-	IPM+	
24		-	EARTH	
25	WHITE	+	IPM-	
26		-	EARTH	

NON-INCENDIVE
DISCRETE
BOARD #3

TERM	COLOR	+/-	FUNC	DESCRIPTION
1	WHITE	+	D01	SPARE
2	BLACK	-		
3	WHITE	+	D02	SPARE
4	BLACK	-		
5	WHITE	+	D03	SPARE
6	BLACK	-		
7	WHITE	+	D04	SPARE
8	BLACK	-		
9	WHITE	+	D05	SPARE
10	BLACK	-		
11	WHITE	+	D06	SPARE
12	BLACK	-		
13	WHITE	+	D07	SPARE
14	BLACK	-		
15	WHITE	+	D08	SPARE
16	BLACK	-		
17	WHITE	+	D09	SPARE
18	BLACK	-		
19	WHITE	+	D10	SPARE
20	BLACK	-		
21	WHITE	+	D11	SPARE
22	BLACK	-		
23	WHITE	+	D12	SPARE
24	BLACK	-		
25			EARTH	
26			EARTH	



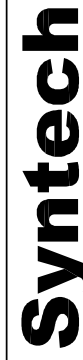
LEGEND
 1. PANEL WIRING
 2. FIELD WIRING
 3. TERMINAL
 4. FUSED TERMINAL
 5. FEED THROUGH TERMINAL
 6. DISCONNECT TERMINAL

WIRE COLOR LEGEND
 1. 24VDC; RED
 2. 24VDC; YELLOW
 3. 24VDC; GREEN
 4. ANALOG INPUT OUTPUT -; BLACK
 5. ANALOG INPUT OUTPUT +; WHITE
 6. ANALOG LOOP; PURPLE

Rev.	Sort Rev.	Revision Description	By	Date	Checked	App'd
2	A	PANEL SHIP AS BUILT	AK	20.09.2005	SC	
1		ISSUED FOR CONSTRUCTION	AK	12.08.2005	SC	

Project Title
**FORT ENERGY C/O TRIDENT
 RC10338**

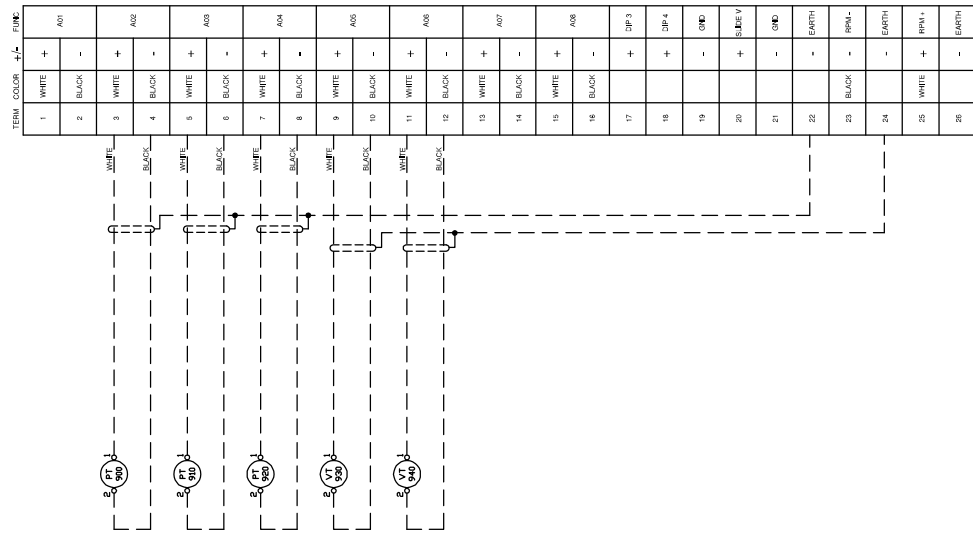
NON-INCENDIVE INPUT BOARD #3
 ANALOG / DISCRETE LAYOUT DRAWING



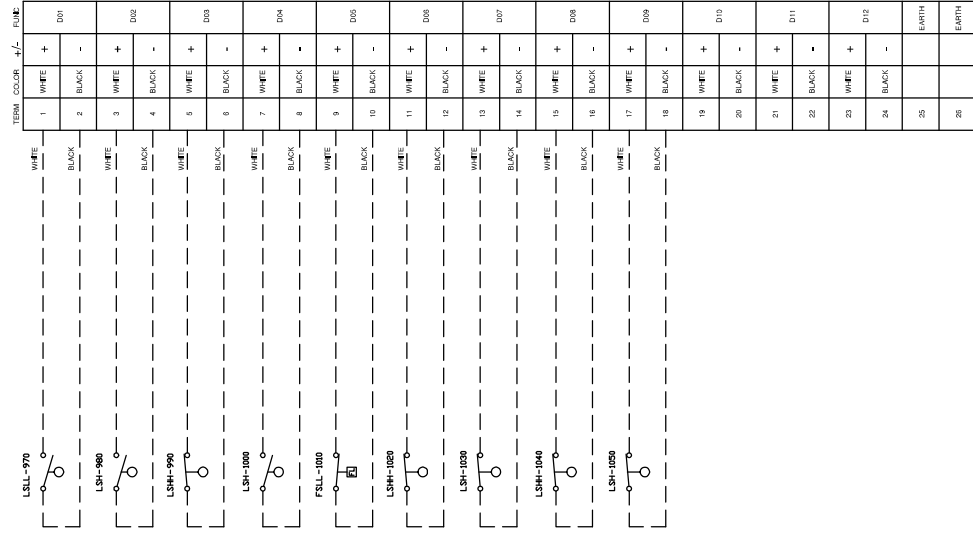
Syntech Number
5190158-20
 Customer Drawing Number
0504440
 NTS

THIS DRAWING IS DESIGNED ENTIRELY FOR USE BY SYNTech AND IS SOLE PROPERTY OF SYNTech WHICH ASSUMES NO LIABILITY FOR REPRODUCTION OF THE DRAWING CONTENTS.

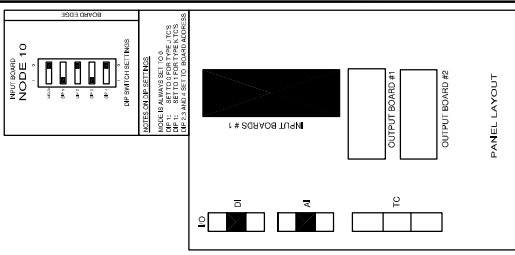
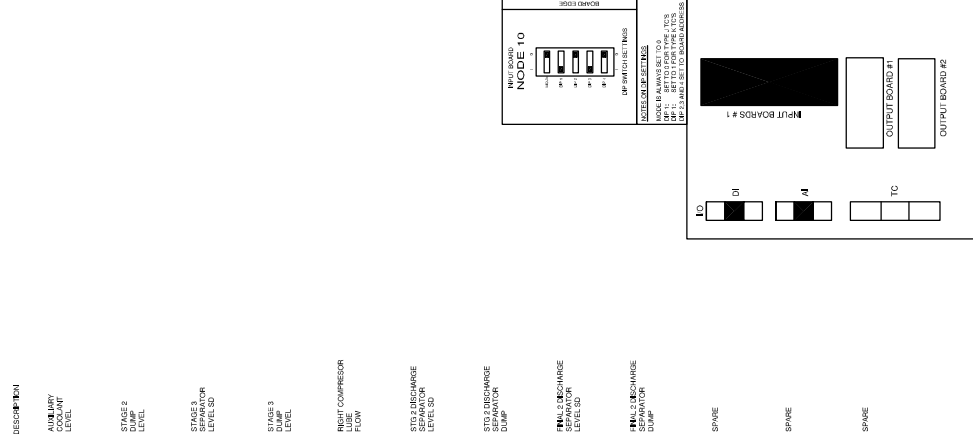
NON-INDEPENDENT ANALOG BOARD #2



NON-INDEPENDENT DISCRETE BOARD #2



NON-INDEPENDENT ANALOG BOARD #1



Syntech

FORT ENERGY C/O TRIDENT RC10338

5190158-19
050440

NON-INDEPENDENT INPUT BOARD #2
ANALOG / DISCRETE LAYOUT DRAWING

1 of 1
NTS

Project Title
Drawing Title

Rev.	Sort Rev.	Revision Description	By	Date	Checked	App'd
1		ISSUED FOR CONSTRUCTION	AK	12/08/2005	SC	
2		PANEL SHOP AS BUILT	AK	01/09/2005	SC	
2		PANEL SHOP AS BUILT	AK	20/09/2005	SC	

LEGEND

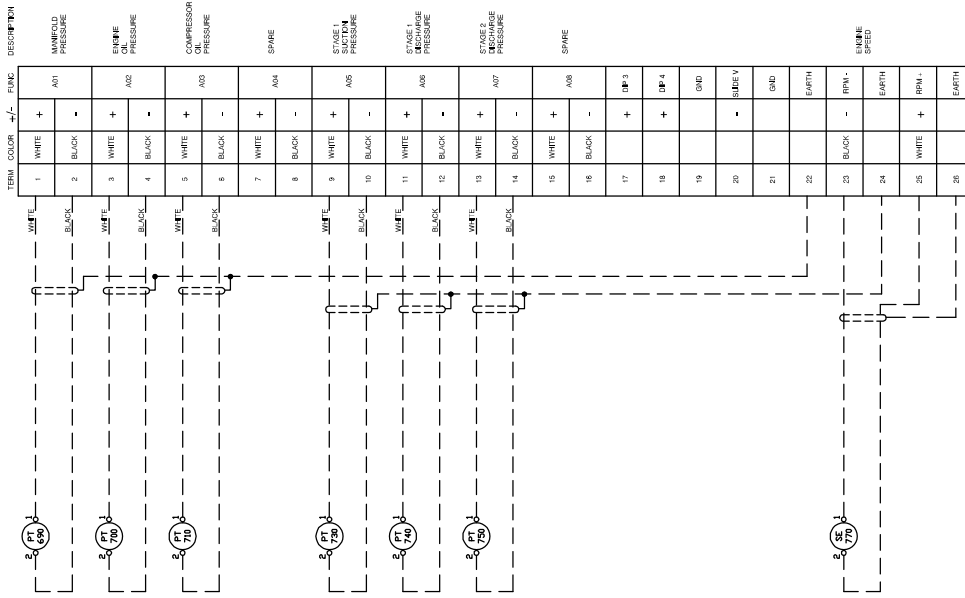
- PANEL WIRING
- FIELD WIRING
- MINIMAL WIRING
- FUSED TERMINAL
- FEED THROUGH TERMINAL
- DISCONNECT TERMINAL

WIRE COLOR LEGEND

- 24VDC: RED
- 24VDC: YELLOW
- 24VDC: GREEN
- ANALOG INPUT OUTPUT -: BLACK
- ANALOG INPUT OUTPUT +: WHITE
- ANALOG LOOP: PURPLE

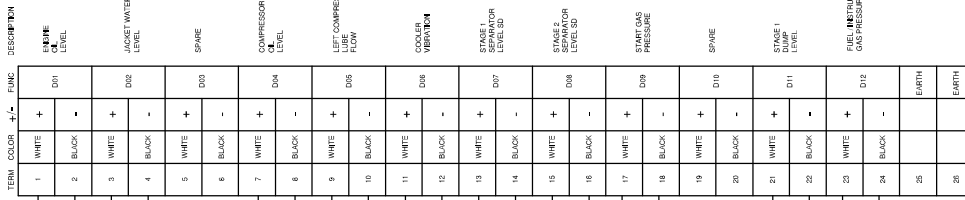
THIS DRAWING IS DESIGNED ENTIRELY FOR USE BY SYNTech AND IS SOLE PROPERTY OF SYNTech WHICH ASSUMES NO LIABILITY FOR REPRODUCTION OF THE DRAWING CONTENTS.

NON-INCENDIVE
ANALOG
BOARD #1

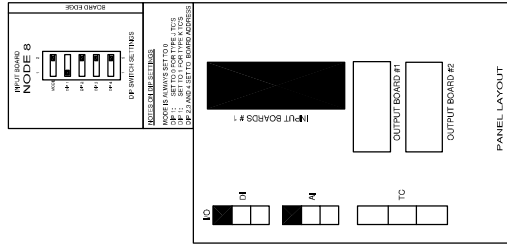


TERM	COLOR	+	-	FUNC	DESCRIPTION
1	WHITE	+		DP1	MANFOLD PRESSURE
2	BLACK	-			MANFOLD PRESSURE
3	WHITE	+		DP2	ENGINE OIL PRESSURE
4	BLACK	-			ENGINE OIL PRESSURE
5	WHITE	+		DP3	COMPRESSOR PRESSURE
6	BLACK	-			COMPRESSOR PRESSURE
7	WHITE	+		DP4	SPARE
8	BLACK	-			SPARE
9	WHITE	+		DP5	STAGE 1 PRESSURE
10	BLACK	-			STAGE 1 PRESSURE
11	WHITE	+		DP6	STAGE 1 RECHARGE PRESSURE
12	BLACK	-			STAGE 1 RECHARGE PRESSURE
13	WHITE	+		DP7	STAGE 2 PRESSURE
14	BLACK	-			STAGE 2 PRESSURE
15	WHITE	+		DP8	SPARE
16	BLACK	-			SPARE
17	WHITE	+		DP9	START GAS PRESSURE
18	BLACK	-			START GAS PRESSURE
19	WHITE	+		DP10	SPARE
20	BLACK	-			SPARE
21	WHITE	+		DP11	STAGE 1 DUMP LEVEL
22	BLACK	-			STAGE 1 DUMP LEVEL
23	WHITE	+		DP12	FUEL INSTRUMENT GAS PRESSURE
24	BLACK	-			FUEL INSTRUMENT GAS PRESSURE
25	WHITE	+		EARTH	WIRE SHIP AS BUILT
26	BLACK	-		EARTH	WIRE SHIP AS BUILT

NON-INCENDIVE
DISCRETE
BOARD #1



TERM	COLOR	+	-	FUNC	DESCRIPTION
1	WHITE	+		DP1	MANFOLD PRESSURE
2	BLACK	-			MANFOLD PRESSURE
3	WHITE	+		DP2	ENGINE OIL PRESSURE
4	BLACK	-			ENGINE OIL PRESSURE
5	WHITE	+		DP3	COMPRESSOR PRESSURE
6	BLACK	-			COMPRESSOR PRESSURE
7	WHITE	+		DP4	SPARE
8	BLACK	-			SPARE
9	WHITE	+		DP5	STAGE 1 PRESSURE
10	BLACK	-			STAGE 1 PRESSURE
11	WHITE	+		DP6	STAGE 1 RECHARGE PRESSURE
12	BLACK	-			STAGE 1 RECHARGE PRESSURE
13	WHITE	+		DP7	STAGE 2 PRESSURE
14	BLACK	-			STAGE 2 PRESSURE
15	WHITE	+		DP8	SPARE
16	BLACK	-			SPARE
17	WHITE	+		DP9	START GAS PRESSURE
18	BLACK	-			START GAS PRESSURE
19	WHITE	+		DP10	SPARE
20	BLACK	-			SPARE
21	WHITE	+		DP11	STAGE 1 DUMP LEVEL
22	BLACK	-			STAGE 1 DUMP LEVEL
23	WHITE	+		DP12	FUEL INSTRUMENT GAS PRESSURE
24	BLACK	-			FUEL INSTRUMENT GAS PRESSURE
25	WHITE	+		EARTH	WIRE SHIP AS BUILT
26	BLACK	-		EARTH	WIRE SHIP AS BUILT



LEGEND

- PANEL WIRING
- FIELD WIRING
- MINIMAL WIRING
- FUSED TERMINAL
- FEED THROUGH TERMINAL
- DISCONNECT TERMINAL

WIRE COLOR LEGEND

- 24VDC RED
- 24VDC YELLOW
- 24VDC GREEN
- ANALOG INPUT OUTPUT - BLACK
- ANALOG INPUT OUTPUT + WHITE
- ANALOG LOOP PURPLE

FORT ENERGY C/O TRIDENT
RC10338

NON-INCENDIVE INPUT BOARD #1
ANALOG / DISCRETE LAYOUT DRAWING

Rev.	Sort	Rev. Description	By	Date	Checked	App'd
1		ISSUED FOR CONSTRUCTION	AK	12.08.2005	SC	
2	A	PANEL SHIP AS BUILT	AK	20.08.2005	SC	

THIS DRAWING IS DESIGNED ENTIRELY FOR USE BY SYNTech AND IS SOLE PROPERTY OF SYNTech WHICH ASSUMES NO LIABILITY FOR REPRODUCTION OF THE DRAWING CONTENTS.

Syntech

Project Title: FORT ENERGY C/O TRIDENT RC10338

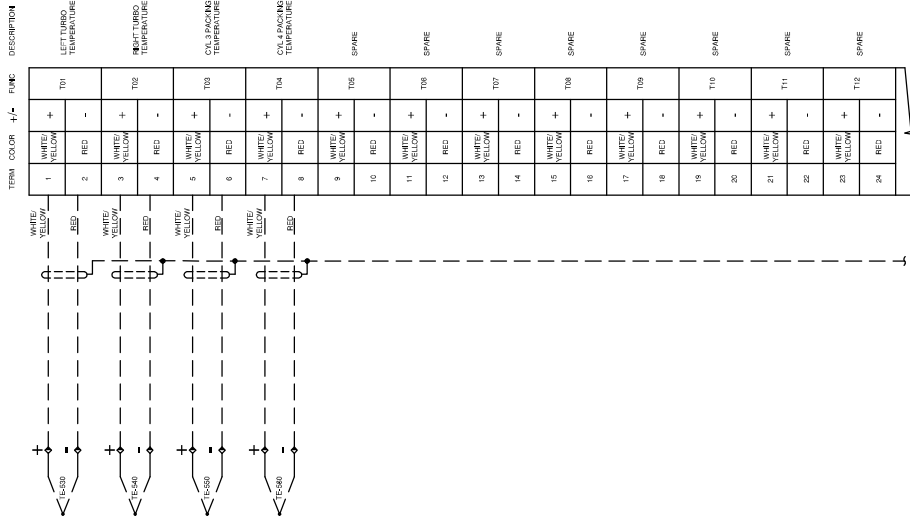
Sheet Number: 5190158-18

Customer: NTS

Drawing Number: 050440

1 of 1

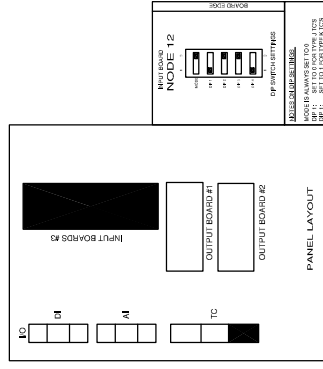
NON-INCENDIVE
THERMOCOUPLE
BOARD #3



NON-INCENDIVE
THERMOCOUPLE
BOARD #3

TERM. COLOR	WIRE	DESCRIPTION
1	WHITE/YELLOW	LET TURBO TEMPERATURE
2	RED	TEMPERATURE
3	WHITE/YELLOW	CRK TURBO TEMPERATURE
4	RED	TEMPERATURE
5	WHITE/YELLOW	CYL 3 PACKING TEMPERATURE
6	RED	TEMPERATURE
7	WHITE/YELLOW	CYL 4 CYLIND TEMPERATURE
8	RED	TEMPERATURE
9	WHITE/YELLOW	SPARE
10	RED	SPARE
11	WHITE/YELLOW	SPARE
12	RED	SPARE
13	WHITE/YELLOW	SPARE
14	RED	SPARE
15	WHITE/YELLOW	SPARE
16	RED	SPARE
17	WHITE/YELLOW	SPARE
18	RED	SPARE
19	WHITE/YELLOW	SPARE
20	RED	SPARE
21	WHITE/YELLOW	SPARE
22	RED	SPARE
23	WHITE/YELLOW	SPARE
24	RED	SPARE
25	WHITE/YELLOW	SPARE
26	RED	SPARE
27	WHITE/YELLOW	SPARE
28	RED	SPARE
29	WHITE/YELLOW	SPARE
30	RED	SPARE
31	WHITE/YELLOW	SPARE
32	RED	SPARE
33		DESCRIPTION
34		EARTH
35		EARTH
36		EARTH
37		EARTH
38		EARTH
39		EARTH
40		EARTH

THERMOCOUPLE FIELD WIRING
 K-TYPE: ++ = YELLOW
 -- = RED
 J-TYPE: ++ = WHITE
 -- = RED



- LEGEND**
- 1. PANEL WIRING
 - 2. FIELD WIRING
 - 3. TERMINAL
 - 4. FUSED TERMINAL
 - 5. FEED THROUGH TERMINAL
 - 6. DISCONNECT TERMINAL

- WIRE COLOR LEGEND**
- 1. 24VDC: RED
 - 2. 24VDC: YELLOW
 - 3. 24VDC: PURPLE
 - 4. ANALOG INPUT OUTPUT -: BLACK
 - 5. ANALOG INPUT OUTPUT +: WHITE
 - 6. ANALOG LOOP: PURPLE

Rev.	Sort Rev.	Revision Description	By	Date	Checked	Apvd
2	A	PANEL SHOP AS BUILT	AK	20.06.2005	SC	
2		PANEL SHOP AS BUILT	AK	01.06.2005	SC	
1		ISSUED FOR CONSTRUCTION	AK	12.06.2005	SC	

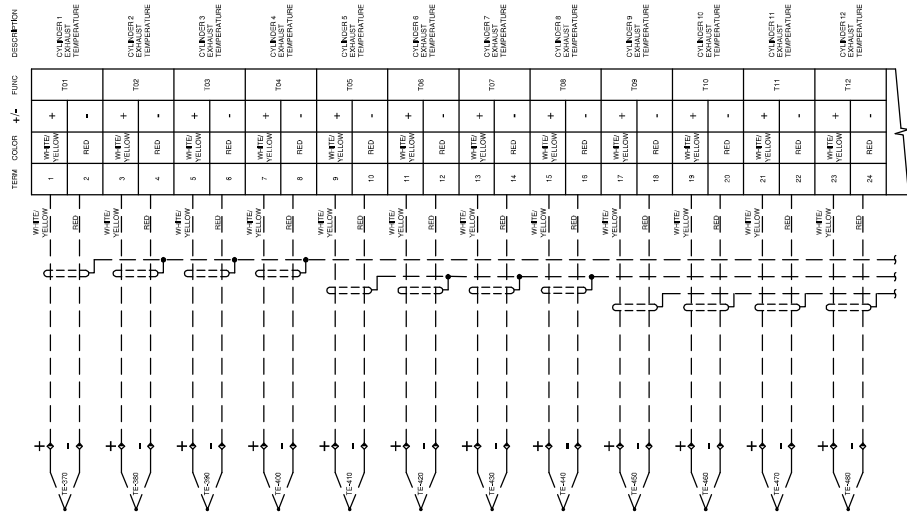
Project Title
**FORT ENERGY C/O TRIDENT
 RC10338**

Drawing Title
**NON-INCENDIVE INPUT BOARD #3
 THERMOCOUPLE LAYOUT DRAWING**

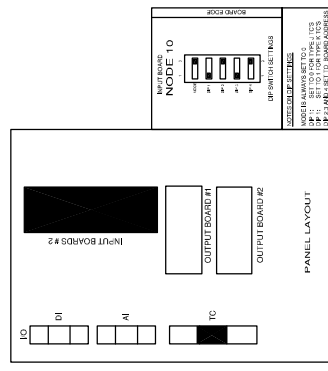
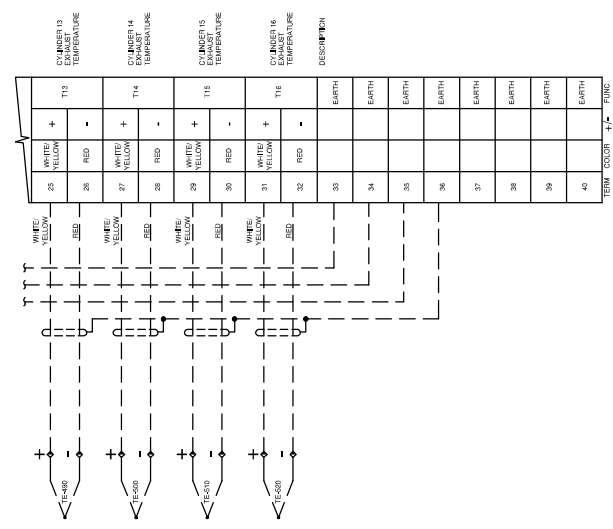
Syntech
 Syntech Number: 5190158-17
 Customer Drawing Number: 050440
 1 of 1
 NTS

THIS DRAWING IS DESIGNED ENTIRELY FOR USE BY SYNTech AND IS SOLE PROPERTY OF SYNTech WHICH ASSUMES NO LIABILITY FOR REPRODUCTION OF THE DRAWING CONTENTS.

NONINCENDIVE
THERMOCOUPLE
BOARD #2



NONINCENDIVE
THERMOCOUPLE
BOARD #2



THERMOCOUPLE FIELD WIRING
K-TYPE: - = YELLOW
J-TYPE: + = WHITE
- = RED

- LEGEND
- 1. PANEL WIRING
 - 2. FIELD WIRING
 - 3. ANALOG INPUT TERMINAL
 - 4. ANALOG OUTPUT TERMINAL
 - 5. ANALOG INPUT OUTPUT
 - 6. ANALOG LOOP
- WIRE COLOR LEGEND
- 1. 24VDC: RED
 - 2. 24VDC: YELLOW
 - 3. 24VDC: BLACK
 - 4. ANALOG INPUT OUTPUT - : BLACK
 - 5. ANALOG INPUT OUTPUT + : WHITE
 - 6. ANALOG LOOP: PURPLE

Project Title
FORT ENERGY C/O TRIDENT
RC10338

Project Title

Rev.	Sort	Rev.	Date	By	Checked	App'd
1			12/28/2005	AK		
2	A		20/06/2005	AK		
2			01/09/2005	AK		

Revision Description

ISSUED FOR CONSTRUCTION

PANEL SHOP AS BUILT

PANEL SHOP AS BUILT

NONINCENDIVE INPUT BOARD #2
THERMOCOUPLE LAYOUT DRAWING

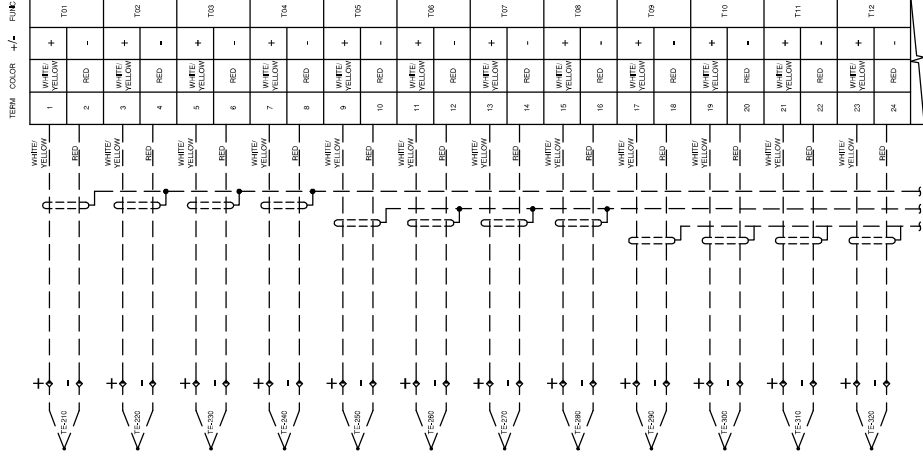
5190158-16
050338

1 of 1
NTS

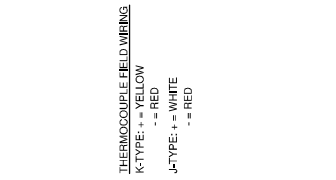
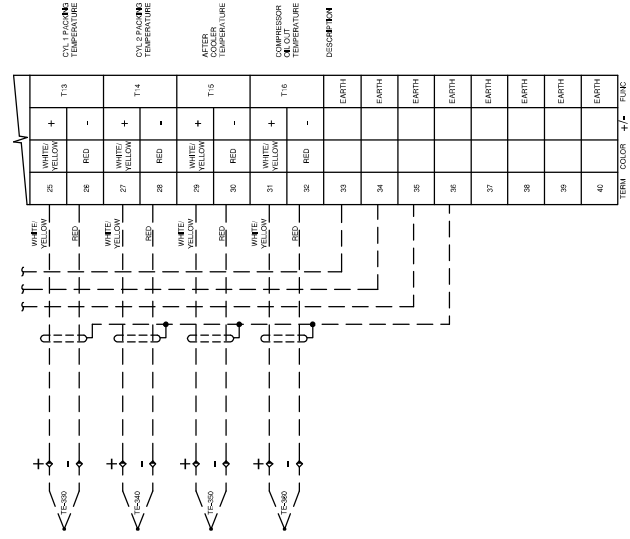
Syntech

THIS DRAWING IS DESIGNED ENTIRELY FOR USE BY SYNTech AND IS SOLE PROPERTY OF SYNTech WHICH ASSUMES NO LIABILITY FOR REPRODUCTION OF THE DRAWING CONTENTS.

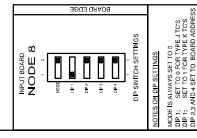
NON-INCENDIVE
THERMOCOUPLE
BOARD #1



NON-INCENDIVE
THERMOCOUPLE
BOARD #1



THERMOCOUPLE FIELD WIRING
K-TYPE: + = YELLOW
J-TYPE: + = WHITE
- = RED



SYNTECH ELECTRIC
1000 W. 10TH ST. #100
DENVER, CO 80202
TEL: 303.733.1100
FAX: 303.733.1101
WWW.SYNTECHELECTRIC.COM

Syntech

Project Title: FORT ENERGY C/O TRIDENT RC10338

System Number: 5190158-15

Customer: 050440

1 of 1

NTS

NON-INCENDIVE INPUT BOARD #1
THERMOCOUPLE LAYOUT DRAWING

Project Title: FORT ENERGY C/O TRIDENT RC10338

Drawing Title: NON-INCENDIVE INPUT BOARD #1 THERMOCOUPLE LAYOUT DRAWING

Rev.	Issued	By	Date	Checked	App'd
1		AK	12.08.2005		
2		AK	01.09.2005		
3		AK	20.09.2005		

WIRE COLOR LEGEND

1. 24VDC: RED

2. 24VDC: YELLOW

3. ANALOG INPUT TERMINAL

4. ANALOG INPUT OUTPUT -; BLACK

5. ANALOG INPUT OUTPUT +; WHITE

6. ANALOG LOOP: PURPLE

THIS DRAWING IS DESIGNED ENTIRELY FOR USE BY SYNTECH AND IS SOLE PROPERTY OF SYNTECH WHICH ASSUMES NO LIABILITY FOR REPRODUCTION OF THE DRAWING CONTENTS.

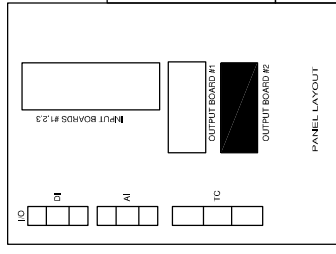
INCENDIVE BOARD #2
DESCRIPTION FUNC +/- COLOR TERM

OUT 40	+	OR	DO 40-43	DO 40+
	-	YEL	DO 40-44	DO 40-
OUT 39	+	OR	DO 39-45	DO 39+
	-	YEL	DO 39-46	DO 39-
OUT 38	+	OR	DO 38-47	DO 38+
	-	YEL	DO 38-48	DO 38-
OUT 37	+	OR	DO 37-49	DO 37+
	-	YEL	DO 37-50	DO 37-
OUT 36	+	OR	DO 36-51	DO 36+
	-	YEL	DO 36-52	DO 36-
OUT 35	+	OR	DO 35-53	DO 35+
	-	YEL	DO 35-54	DO 35-
OUT 34	+	OR	DO 34-55	DO 34+
	-	YEL	DO 34-56	DO 34-
OUT 33	+	OR	DO 33-57	DO 33+
	-	YEL	DO 33-58	DO 33-
OUT 32	+	OR	DO 32-59	DO 32+
	-	YEL	DO 32-60	DO 32-
OUT 31	+	OR	DO 31-61	DO 31+
	-	YEL	DO 31-62	DO 31-
OUT 30	+	OR	DO 30-63	DO 30+
	-	YEL	DO 30-64	DO 30-
OUT 29	+	OR	DO 29-65	DO 29+
	-	YEL	DO 29-66	DO 29-

INCENDIVE BOARD #2
DESCRIPTION FUNC +/- COLOR TERM

OUT 28	+	OR	DO 28-67	DO 28+
	-	YEL	DO 28-68	DO 28-
OUT 27	+	OR	DO 27-69	DO 27+
	-	YEL	DO 27-70	DO 27-
OUT 26	+	OR	DO 26-71	DO 26+
	-	YEL	DO 26-72	DO 26-
OUT 25	+	OR	DO 25-73	DO 25+
	-	YEL	DO 25-74	DO 25-
OUT 24	+	OR	DO 24-75	DO 24+
	-	YEL	DO 24-76	DO 24-
OUT 23	+	OR	DO 23-77	DO 23+
	-	YEL	DO 23-78	DO 23-
OUT 22	+	OR	DO 22-79	DO 22+
	-	YEL	DO 22-80	DO 22-
OUT 21	+	OR	DO 21-81	DO 21+
	-	YEL	DO 21-82	DO 21-
NC				

SPARE SPARE SPARE SPARE SPARE SPARE SPARE SPARE SPARE SPARE



OUTPUT BOARD NODE 4
1P 2P 3P 4P
DPF SWITCH SETTINGS
PANEL LAYOUT
OUTPUT BOARD #1
OUTPUT BOARD #2
OUTPUT BOARD #3

INCENDIVE BOARD #2
DESCRIPTION FUNC +/- COLOR TERM

PROJECT TITLE
FORT ENERGY C/O TRIDENT
RC10338
SYNTECH NUMBER
5190158-14
CUSTOMER DRAWING NUMBER
0504440

INCENDIVE BOARD #2 cont
LAYOUT DRAWING
1 of 1
NTS

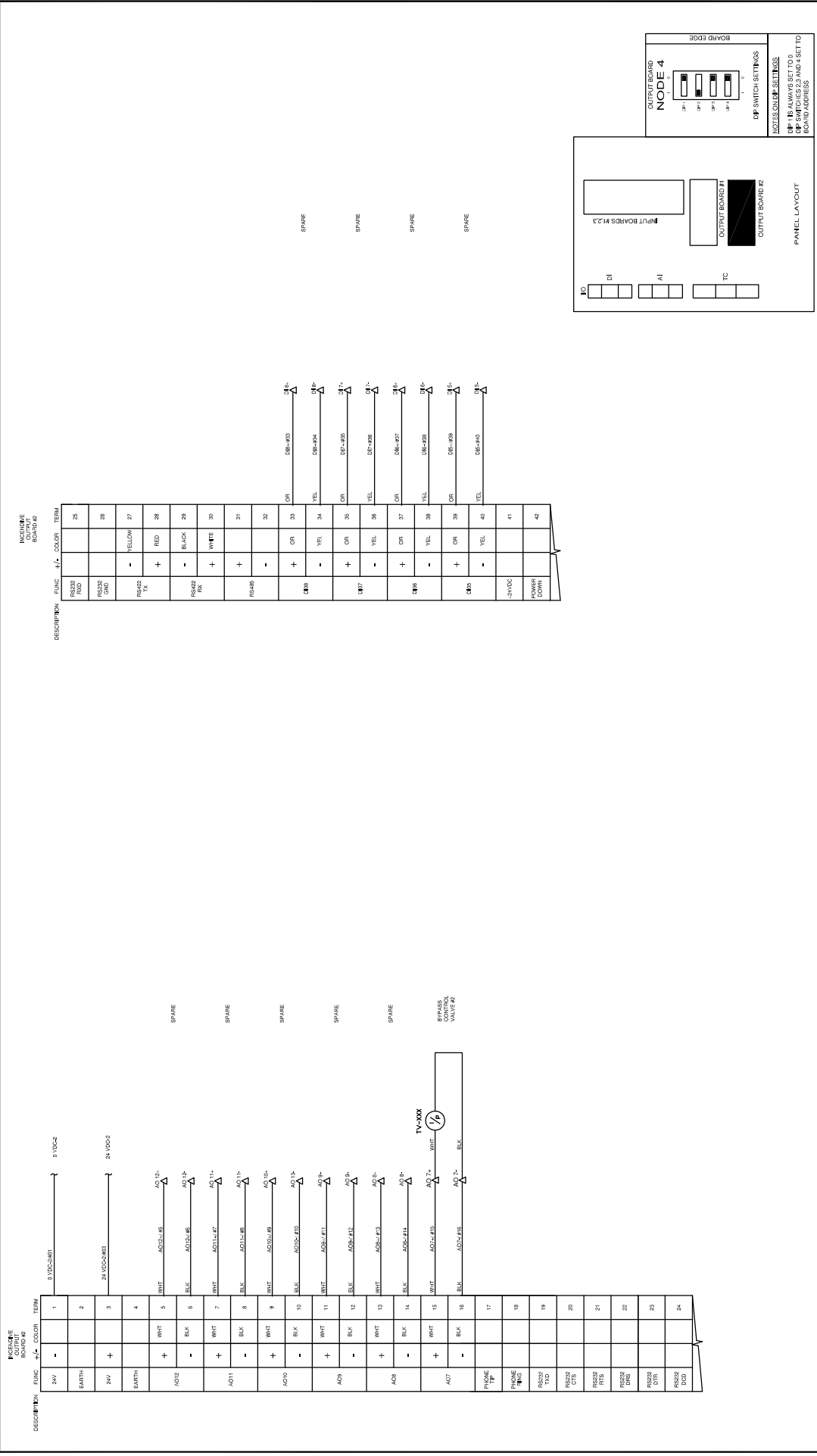
Rev.	Issued For	By	Date	Checked	App'd
2	PANEL SHOP AS BUILT	AK	20.08.2005	SC	
1	ISSUED FOR CONSTRUCTION	AK	12.08.2005	SC	

WIRE COLOR LEGEND
1.-24VDC: RED
2.-24VDC: YELLOW
3.-24VDC: GREEN
4.-ANALOG INPUT-OUTPUT -: BLACK
5.-ANALOG INPUT-OUTPUT +: WHITE
6.-ANALOG LOOP: PURPLE

PANEL WIRING
FIELD WIRING
FUSED TERMINAL
FEED THROUGH TERMINAL
DISCONNECT TERMINAL

THIS DRAWING IS DESIGNED ENTIRELY FOR USE BY SYNTECH AND IS SOLE PROPERTY OF SYNTECH WHICH ASSUMES NO LIABILITY FOR REPRODUCTION OF THE DRAWING CONTENTS.





INCENDIVE BOARD #2

DESCRIPTION: INCENDIVE BOARD #2

PROJECT TITLE: FORT ENERGY C/O TRIDENT RC10338

DRAWING TITLE: INCENDIVE OUTPUT BOARD #2 LAYOUT DRAWING

SYNTECH NUMBER: 5190158-12

CUSTOMER DRAWING NUMBER: 0504440

1 OF 1

NTS

PANEL LAYOUT

INPUT BOARDS #1,2,3

OUTPUT BOARD #1

OUTPUT BOARD #2

DP SWITCH SETTINGS

ADRES: 01, 02, 03, 04

DP #1 IS ALWAYS SET TO 0

DP #2 SWITCHES 2,3 AND 4 SET TO BOARD ADDRESS

LEGEND

PANEL WIRING

FEED WIRING

MINIMAL

FUSED TERMINAL

FEED THROUGH TERMINAL

DISCONNECT TERMINAL

WIRE COLOR LEGEND

1. 24VDC: RED

2. 24VDC: YELLOW

3. ANALOG INPUT: PURPLE

4. ANALOG INPUT OUTPUT: BLACK

5. ANALOG INPUT OUTPUT: WHITE

6. ANALOG LOOP: PURPLE

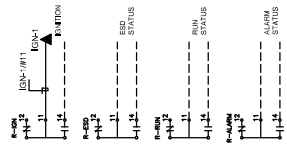
THIS DRAWING IS DESIGNED ENTIRELY FOR USE BY SYNTECH AND IS SOLE PROPERTY OF SYNTECH WHICH ASSUMES NO LIABILITY FOR REPRODUCTION OF THE DRAWING CONTENTS.

INCENDIVE
OUTPUT BOARD #1

DESCRIPTION	FUNC	Wiring	Color	Term
OUT 01	+	OR	DO 20-443	XV-413
OUT 02	-	YEL	DO 20-444	DO 20
OUT 03	+	OR	DO 18-461	DO 18
OUT 04	-	YEL	DO 18-462	DO 18
OUT 05	+	OR	DO 18-467	DO 18
OUT 06	-	YEL	DO 18-468	DO 18
OUT 07	+	OR	DO 17-471	DO 17
OUT 08	-	YEL	DO 17-485	DO 17
OUT 09	+	OR	DO 16-461	AI 1 (R)
OUT 10	-	YEL	DO 16-462	AI 1 (Y)
OUT 11	+	OR	DO 16-463	AI 1 (B)
OUT 12	-	YEL	DO 16-464	AI 1 (PU)
OUT 13	+	OR	DO 16-465	AI 1 (R)
OUT 14	-	YEL	DO 16-466	AI 1 (Y)
OUT 15	+	OR	DO 16-467	AI 1 (B)
OUT 16	-	YEL	DO 16-468	AI 1 (PU)
OUT 17	+	OR	DO 15-469	XV-500
OUT 18	-	YEL	DO 15-470	DO 15
OUT 19	+	OR	DO 11-471	XV-500
OUT 20	-	YEL	DO 11-472	DO 11
OUT 21	+	OR	DO 10-469	DO 10
OUT 22	-	YEL	DO 10-470	DO 10
OUT 23	+	OR	DO 9-469	DO 9
OUT 24	-	YEL	DO 9-470	DO 9
OUT 25	+	OR	DO 8-469	XV-500
OUT 26	-	YEL	DO 8-470	DO 8

INCENDIVE
OUTPUT BOARD #1

DESCRIPTION	FUNC	Wiring	Color	Term
OUT 27	+	OR	DO 8-467	DO 8
OUT 28	-	YEL	DO 8-468	DO 8
OUT 29	+	OR	DO 7-469	DO 7
OUT 30	-	YEL	DO 7-470	DO 7
OUT 31	+	OR	DO 6-471	XV-500
OUT 32	-	YEL	DO 6-472	DO 6
OUT 33	+	OR	DO 5-473	XV-500
OUT 34	-	YEL	DO 5-474	DO 5
OUT 35	+	OR	DO 4-475	DO 4
OUT 36	-	YEL	DO 4-476	DO 4
OUT 37	+	OR	DO 3-477	DO 3
OUT 38	-	YEL	DO 3-478	DO 3
OUT 39	+	OR	DO 2-479	DO 2
OUT 40	-	YEL	DO 2-480	DO 2
OUT 41	+	OR	DO 1-481	DO 1
OUT 42	-	YEL	DO 1-482	DO 1
NC				



LEGEND

- PANEL WIRING
- FEED WIRING
- FEED THROUGH TERMINAL
- FEED THROUGH TERMINAL
- DISCONNECT TERMINAL

WIRE COLOR LEGEND

- 24VDC: RED
- 24VDC: YELLOW
- ANALOG INPUT: BLACK
- ANALOG INPUT OUTPUT: WHITE
- ANALOG LOOP: PURPLE
- DISCONNECT TERMINAL

THIS DRAWING IS DESIGNED ENTIRELY FOR USE BY SYNTech AND IS SOLE PROPERTY OF SYNTech WHICH ASSUMES NO LIABILITY FOR REPRODUCTION OF THE DRAWING CONTENTS.

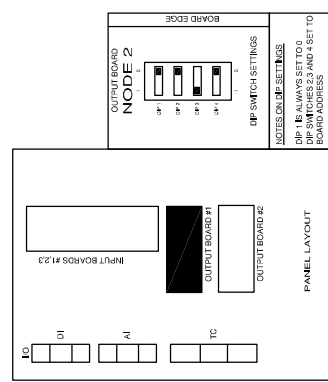
Rev.	Sort	Revised	By	Date	Checked	App'd
2	A	PANEL SHOP AS BUILT	AK	20.08.2005	SC	
2		PANEL SHOP AS BUILT	AK	01.08.2005	SC	
1		ISSUED FOR CONSTRUCTION	AK	12.08.2005	SC	

FORT ENERGY C/O TRIDENT
RC10338

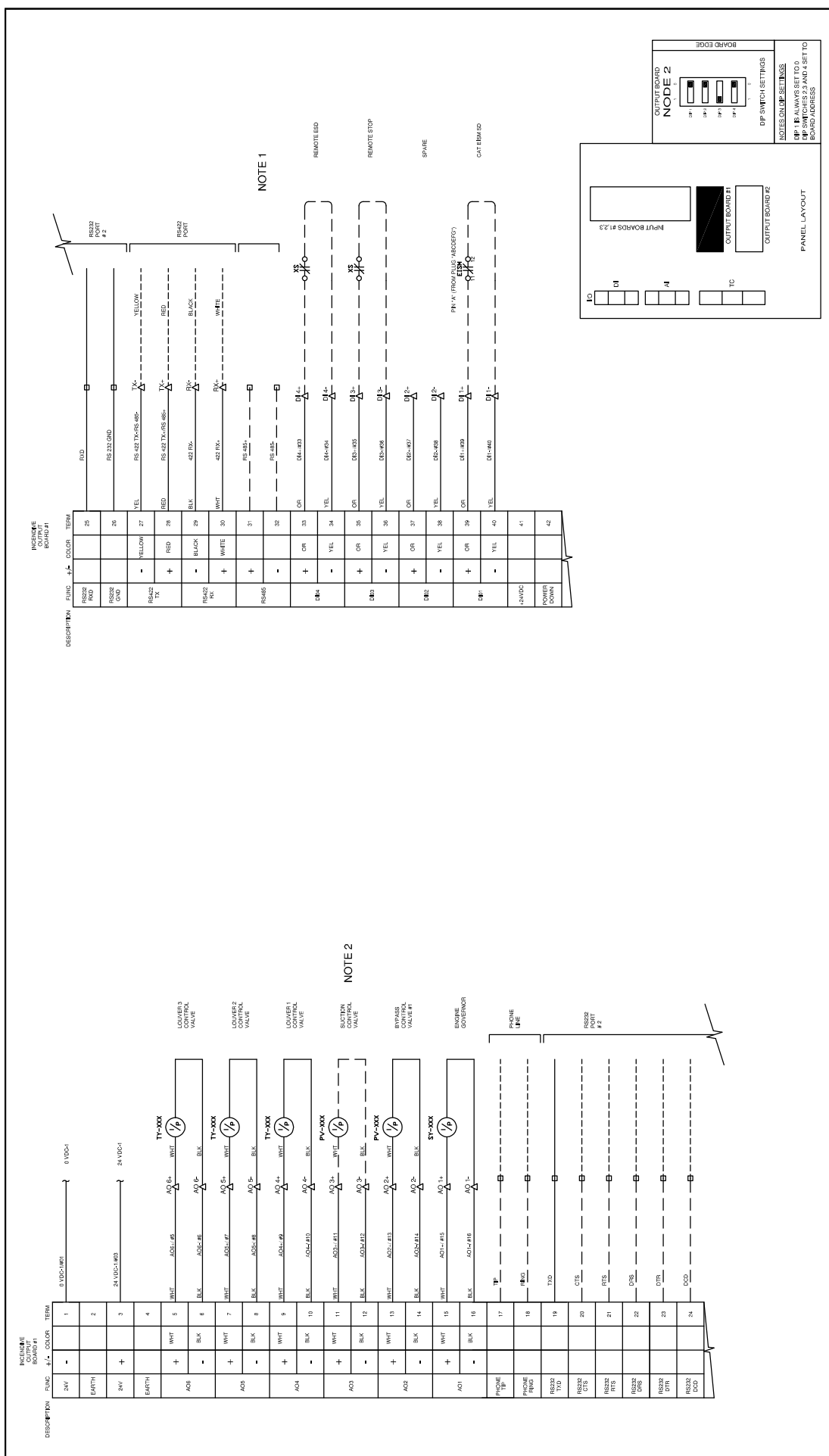
INCENDIVE OUTPUT BOARD #1 cont
LAYOUT DRAWING

Syntech

Syntech Number: 5190158-11
Customer Drawing Number: 0504440
1 of 1
NTS



OUTPUT BOARD NODE 2
DP SWITCH SETTINGS
NOTES ON DP SETTINGS
DP 1 IS ALWAYS SET TO 0
DP 2 SWITCHES 2, 3 AND 4 SET TO BOARD ADDRESS



INCENDIVE OUTPUT BOARD #1

DESCRIPTION **FUNC.** **COLO.** **TERM.**

RS232 TX			25				
RS232 TX			26				
RS232 TX-RS-485		YELLOW	27				
RS232 TX-RS-485		RED	28				
420 TX		BLACK	29				
420 RX		WHITE	30				
RS-485			31				
RS-485			32				
OR			33				
YEL			34				
OR			35				
YEL			36				
OR			37				
YEL			38				
OR			39				
YEL			40				
NOVOLT			41				
NOVOLT DOWN			42				

NOTE 1

REMOVER STOP

REMOVER STOP

SPARE

CATERPILLAR

INCENDIVE OUTPUT BOARD #1

DESCRIPTION **FUNC.** **COLO.** **TERM.**

24V			1	8-100C-1W0			
EARTH			2	24-100C-1W0			
24V	+		3				
EARTH			4				
	+	WHIT	5	AO5L-A5	TY-XXX	1/6	LOWVOLT CONTROL VALVE
AO5	-	BLK	6	AO5C-A6	TY-XXX	1/6	LOWVOLT CONTROL VALVE
	+	WHIT	7	AO5L-A7	TY-XXX	1/6	LOWVOLT CONTROL VALVE
AO5	-	BLK	8	AO5C-A8	TY-XXX	1/6	LOWVOLT CONTROL VALVE
	+	WHIT	9	AO5L-A9	TY-XXX	1/6	LOWVOLT CONTROL VALVE
AO4	-	BLK	10	AO5C-A10	PV-XXX	1/6	SECTION CONTROL VALVE
	+	WHIT	11	AO5L-A11	PV-XXX	1/6	SECTION CONTROL VALVE
AO3	-	BLK	12	AO5C-A12	PV-XXX	1/6	SECTION CONTROL VALVE
	+	WHIT	13	AO5L-A13	PV-XXX	1/6	SECTION CONTROL VALVE
AO2	-	BLK	14	AO5C-A14	PV-XXX	1/6	SECTION CONTROL VALVE
	+	WHIT	15	AO5L-A15	SY-XXX	1/6	ENGINE GOVERNOR
AO1	-	BLK	16	AO5C-A16	SY-XXX	1/6	ENGINE GOVERNOR
PHONE TRIP			17				
PHONE TRIP			18				
RS232 TX			19				
RS232 TX			20				
RS232 RX			21				
RS232 RX			22				
RS232 DTR			23				
RS232 DCD			24				

NOTE 2

PHONE TRIP

PHONE TRIP

RS232 TX

RS232 TX

RS232 RX

RS232 RX

RS232 DTR

RS232 DCD

PROJECT TITLE

FORT ENERGY C/O TRIDENT

RC10338

REVISIONS

Rev.	Sort	Rev.	Sort	Rev.	Sort	Rev.	Sort
2	A						
2							
1							

DATE

By	Date	Checked	App'd
AK	20.06.2005	SC	
AK	01.06.2005	SC	
AK	12.06.2005	SC	

DRAWING TITLE

INCENDIVE OUTPUT BOARD #1

LAYOUT DRAWING

SYNOPSIS

1 of 1

NTS

PROJECT NUMBER

5190158-10

CUSTOMER DRAWING NUMBER

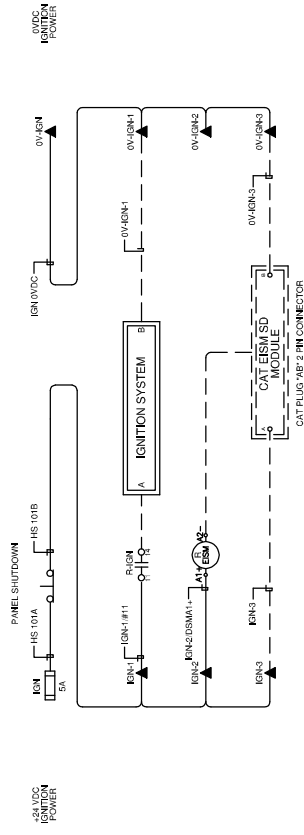
050440

SYNOPSIS

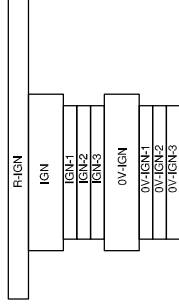
1 of 1

NTS

IGNITION DISTRIBUTION



IGNITION TERMINAL LAYOUT



LEGEND

- PANEL WIRING
- FIELD WIRING
- TERMINAL
- FUSED TERMINAL
- FEED THROUGH TERMINAL
- DISCONNECT TERMINAL

WIRE COLOR LEGEND

- 24VDC: RED
- 24VDC: YELLOW
- 24VDC: GREEN
- ANALOG INPUT OUTPUT -: BLACK
- ANALOG INPUT OUTPUT +: WHITE
- ANALOG LOOP: PURPLE

Revision History

Rev.	Sort	Rev. Description	By	Date	Checked	App'd
2	A	PANEL SHIP AS BUILT	AK	20.06.2005	SC	
2		PANEL SHIP AS BUILT	AK	01.06.2005	SC	
1		ISSUED FOR CONSTRUCTION	AK	12.06.2005	SC	

THIS DRAWING IS DESIGNED ENTIRELY FOR USE BY SYNTech AND IS SOLE PROPERTY OF SYNTech WHICH ASSUMES NO LIABILITY FOR REPRODUCTION OF THE DRAWING CONTENTS.

Project Title: FORT ENERGY C/O TRIDENT RC10338

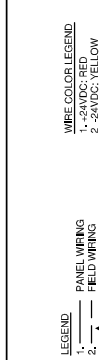
Drawing Title: IGNITION POWER DISTRIBUTION LAYOUT DRAWING

Syntech Number: 5190158-06

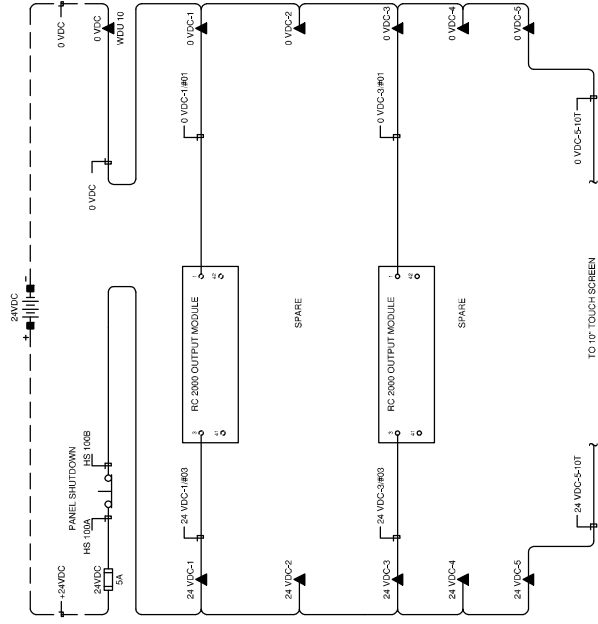
Customer Number: 050440

1 of 1

NTS

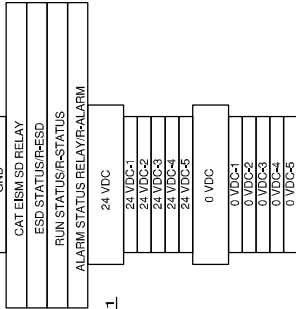
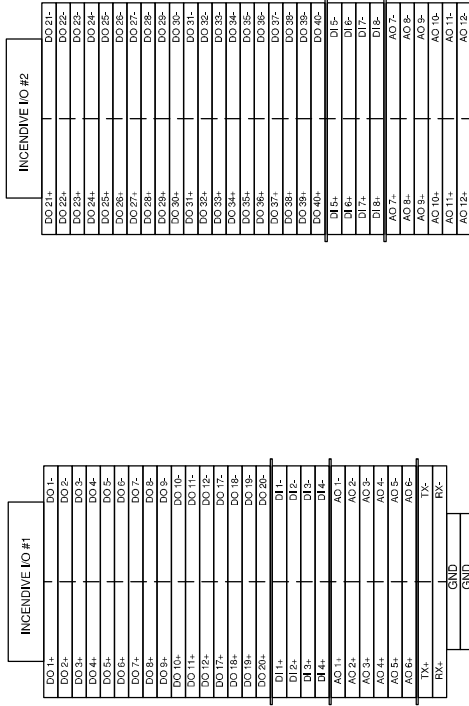


24VDC POWER DISTRIBUTION



24VDC TERMINAL LAYOUT

TOP LEVEL BOTTOM LEVEL TOP LEVEL BOTTOM LEVEL



NOTE 1

NOTES: 1. SEPARATE 24VDC POWER PROVIDED FOR PANEL.

- LEGEND**
- 1. PANEL WIRING
 - 2. FIELD WIRING
 - 3. TERMINAL
 - 4. FUSED TERMINAL
 - 5. FEED THROUGH TERMINAL
 - 6. DISCONNECT TERMINAL
- WIRE COLOR LEGEND**
- 1. 24VDC: RED
 - 2. 24VDC: YELLOW
 - 3. 0VDC: BLACK
 - 4. ANALOG INPUT OUTPUT -: BLACK
 - 5. ANALOG INPUT OUTPUT +: WHITE
 - 6. ANALOG LOOP: PURPLE

FORT ENERGY C/O TRIDENT
RC10338

Project Title

24 VDC POWER DISTRIBUTION
LAYOUT DRAWING

Revision Description By Date Checked

Rev.	Iss	Rev. Description	By	Date	Checked	App'd
1	1	ISSUED FOR CONSTRUCTION	AK	12/08/2005	SC	
2	2	PANEL SHOP AS BUILT	AK	30/09/2005	SC	
2	2	PANEL SHOP AS BUILT	AK	01/09/2005	SC	

Syntech

Syntech Number
Customer
Drawing Number

5190158-05
050440

1 of 1
NTS

THIS DRAWING IS DESIGNED ENTIRELY FOR USE BY SYNTech AND IS SOLE PROPERTY OF SYNTech WHICH ASSUMES NO LIABILITY FOR REPRODUCTION OF THE DRAWING CONTENTS.

BILL OF MATERIALS

ITEM	QTY	DESCRIPTION	MODEL #
1	6	FARGUILD IP	TCM17800-040E2
2	6	BUSKITE SOLENOID	42897
3	2	SOLENOID	39182-ZN1-V6E6
4	1	FISHER TYPE 67 REGULATOR 30 PSI	6742-PP-302-SPEC
5	1	FISHER TYPE 64 REGULATOR 90 PSI	6443
6	6	WYAT PRESSURE GAUGE 0-30 PSI	21850G11
7	1	WYAT PRESSURE GAUGE 0-100 PSI	45A25PEI100
8	1	MUDPAT PRESSURE GAUGE 0-100 PSI	45SD025R12
9	1	AMOT 3-WAY ESD SWITCH	-
10	-	-	-
11	-	-	-
12	-	-	-
13	-	-	-
14	-	-	-
15	-	-	-
16	-	-	-
17	-	-	-
18	-	-	-

LAMACOID SCHEDULE

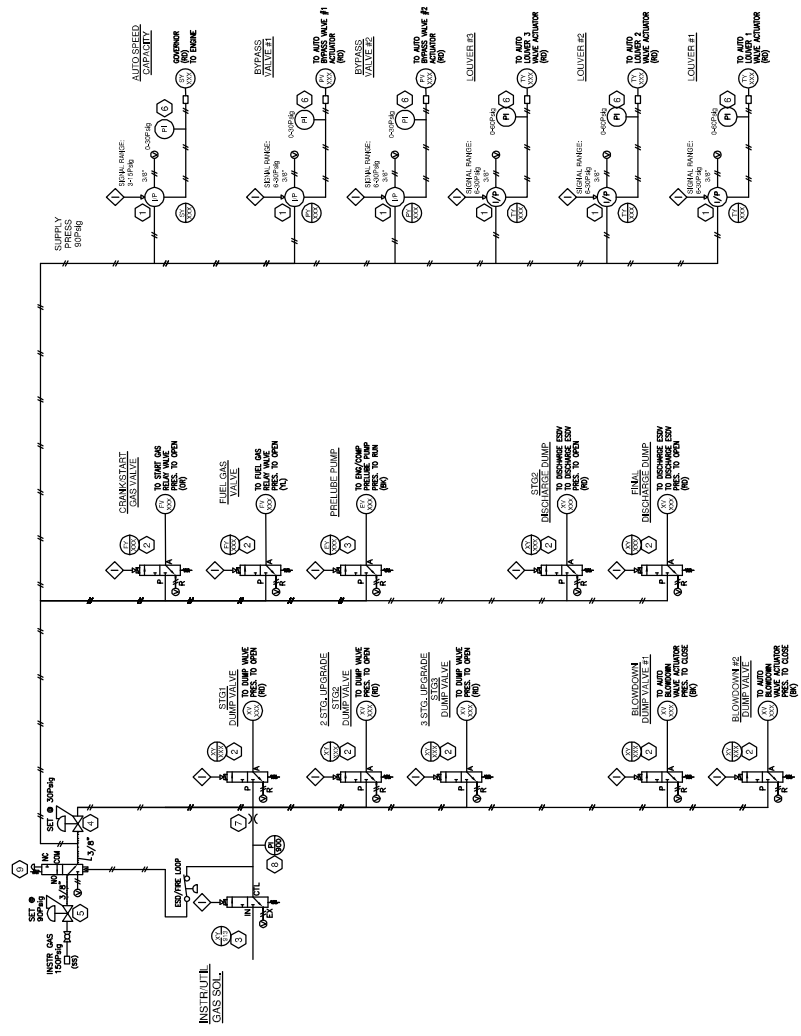
ITEM	QTY	TEXT	COLOR: TEXT/BACKGROUND	SIZE
A	-	-	-	-
B	-	-	-	-
C	-	-	-	-
D	-	-	-	-
E	-	-	-	-
F	-	-	-	-
G	-	-	-	-
H	-	-	-	-
I	-	-	-	-
J	-	-	-	-
K	-	-	-	-
L	-	-	-	-
M	-	-	-	-

LEGEND

PROCESS PIPING
UTILITY PIPING
TUBING - STAINLESS STEEL
AIR LINE
HYDRAULIC LINE (AIR OIL DRUM)
ELECTRICAL SIGNAL

TUBING COLOR CODE

BR (BLACK) ... STAINLESS STEEL TUBING
BL (BLUE) ... STAINLESS STEEL TUBING
GR (GREEN) ... STAINLESS STEEL TUBING
OR (ORANGE) ... STAINLESS STEEL TUBING
PK (PURPLE) ... STAINLESS STEEL TUBING
RD (RED) ... STAINLESS STEEL TUBING
Y (YELLOW) ... STAINLESS STEEL TUBING



FORT ENERGY C/O TRIDENT
RC10338

Project Title	5190158-04	1 of 1
Customer	050440	NTS

PNEUMATIC
LAYOUT DRAWING

Rev.	Date	By	Checked	App'd
1	12/28/2005	AK		
2	01/09/2005	AK		
3	20/09/2005	AK		

REVISIONS

Rev.	Date	By	Checked	App'd
1	12/28/2005	AK		
2	01/09/2005	AK		
3	20/09/2005	AK		

THIS DRAWING IS DESIGNED ENTIRELY FOR USE BY SYNTech AND IS SOLE PROPERTY OF SYNTech WHICH ASSUMES NO LIABILITY FOR REPRODUCTION OF THE DRAWING CONTENTS.

WIRE COLOR LEGEND

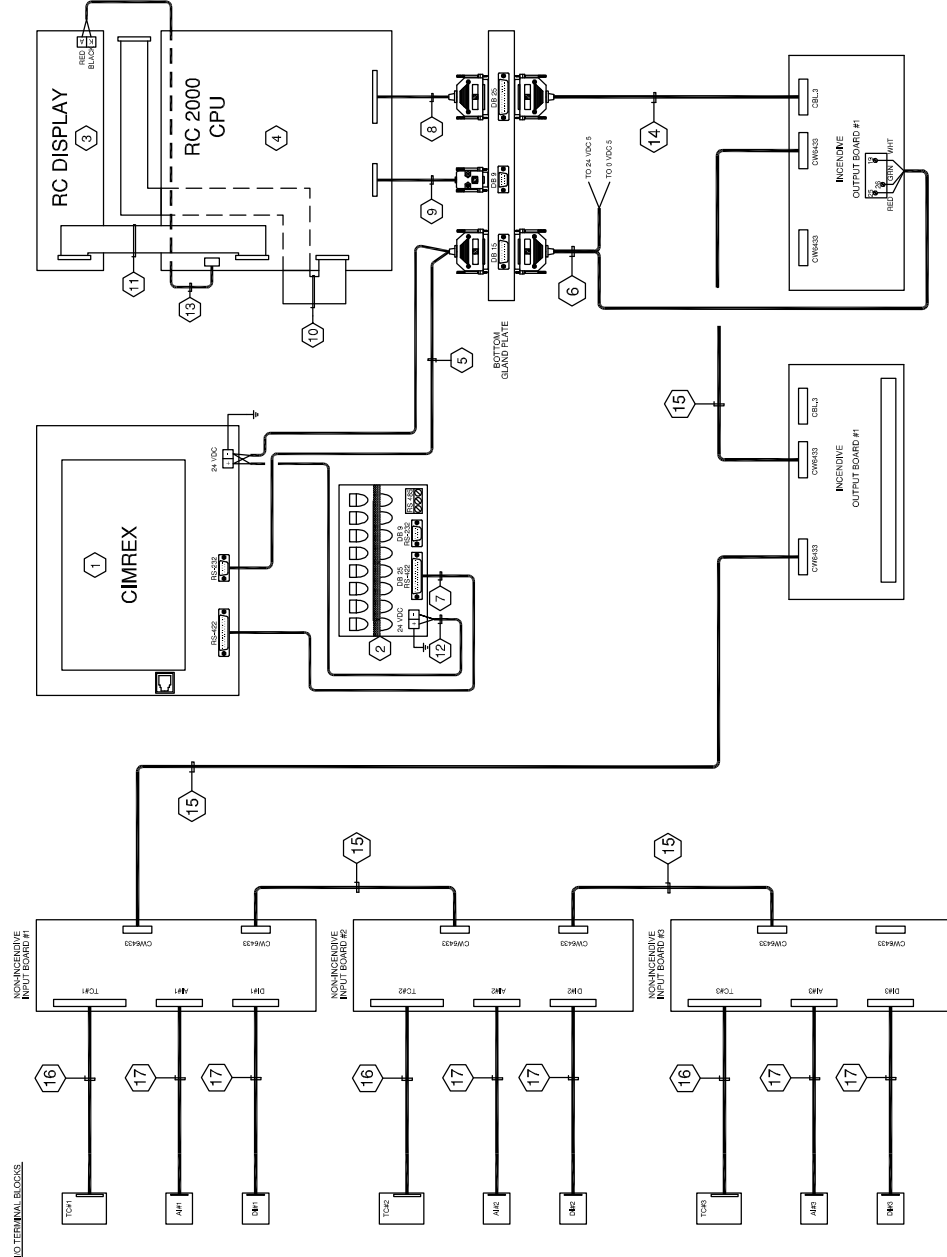
1. 24VDC: RED
2. 24VDC: YELLOW
3. 24VDC: GREEN
4. ANALOG INPUT OUTPUT: BLACK
5. ANALOG INPUT OUTPUT: WHITE
6. ANALOG LOOP: PURPLE

PANEL WIRING

1. FIELD WIRING
2. TERMINAL
3. FUSED TERMINAL
4. FEED THROUGH TERMINAL
5. DISCONNECT TERMINAL

BILL OF MATERIALS

ITEM	QTY	DESCRIPTION	MODEL #
1	1	CIMREX 10" TOUCH SCREEN	CIMREX 91D
2	1	KEYPAD	CKEY16
3	1	RC DISPLAY MODULE	CN12879
4	1	RC 2000 CPU MODULE	CN45157-2
5	1	CIMREX POWER AND DATA CABLE	CA-2503
6	1	PANEL POWER AND DATA CABLE	CA-2503
7	1	KEYPAD CABLE	CA-2503
8	1	CBL-4 MODBUS 16 CABLE	CA-2503
9	1	CBL-4 MODBUS 22 CABLE	CA-2503
10	1	KEYPAD EXTENSION RIBBON CABLE	ABRAG-1509F-RD
11	1	CUSTOM DISPLAY DATA RIBBON CABLE 9"	SYNTECH
12	1	TWO WIRE BELLOON CABLE 12"	SYNTECH
13	1	TWO WIRE BELLOON CABLE 16"	SYNTECH
14	1	CABLE COUPLER 12" RC2000	CN62811-4
15	4	CABLE 9 PIN MODBUS	CN64331-4
16	3	CABLE 40 PIN 32 THERMOCOUPLE	CN64331-3
17	6	CABLE 28 PIN 10"	CN64491-0
18	1		



10. TERMINAL BLOCKS

WIRE COLOR LEGEND
 1. 24VDC: RED
 2. 24VDC: YELLOW
 3. 24VDC: GREEN
 4. ANALOG INPUT OUTPUT - BLACK
 5. ANALOG INPUT OUTPUT + - WHITE
 6. ANALOG LOOP: PURPLE

LEGEND
 1. PANEL WIRING
 2. FIELD WIRING
 3. TERMINAL
 4. FUSED TERMINAL
 5. FEED THROUGH TERMINAL
 6. DISCONNECT TERMINAL

THIS DRAWING IS DESIGNED ENTIRELY FOR USE BY SYNTech AND IS SOLE PROPERTY OF SYNTech WHICH ASSUMES NO LIABILITY FOR REPRODUCTION OF THE DRAWING CONTENTS.

Project Title
FORT ENERGY C/O TRIDENT
 RC10338

Drawing Title
RC2000-10T
 COMMUNICATION LAYOUT DRAWING

Rev.	Sort	Rev. Description	By	Date	Checked	App'd
2	A	PANEL SHOP AS BUILT	AK	20.06.2005	SC	
1		ISSUED FOR CONSTRUCTION	AK	01.09.2005	SC	
1		ISSUED FOR CONSTRUCTION	AK	12.08.2005	SC	

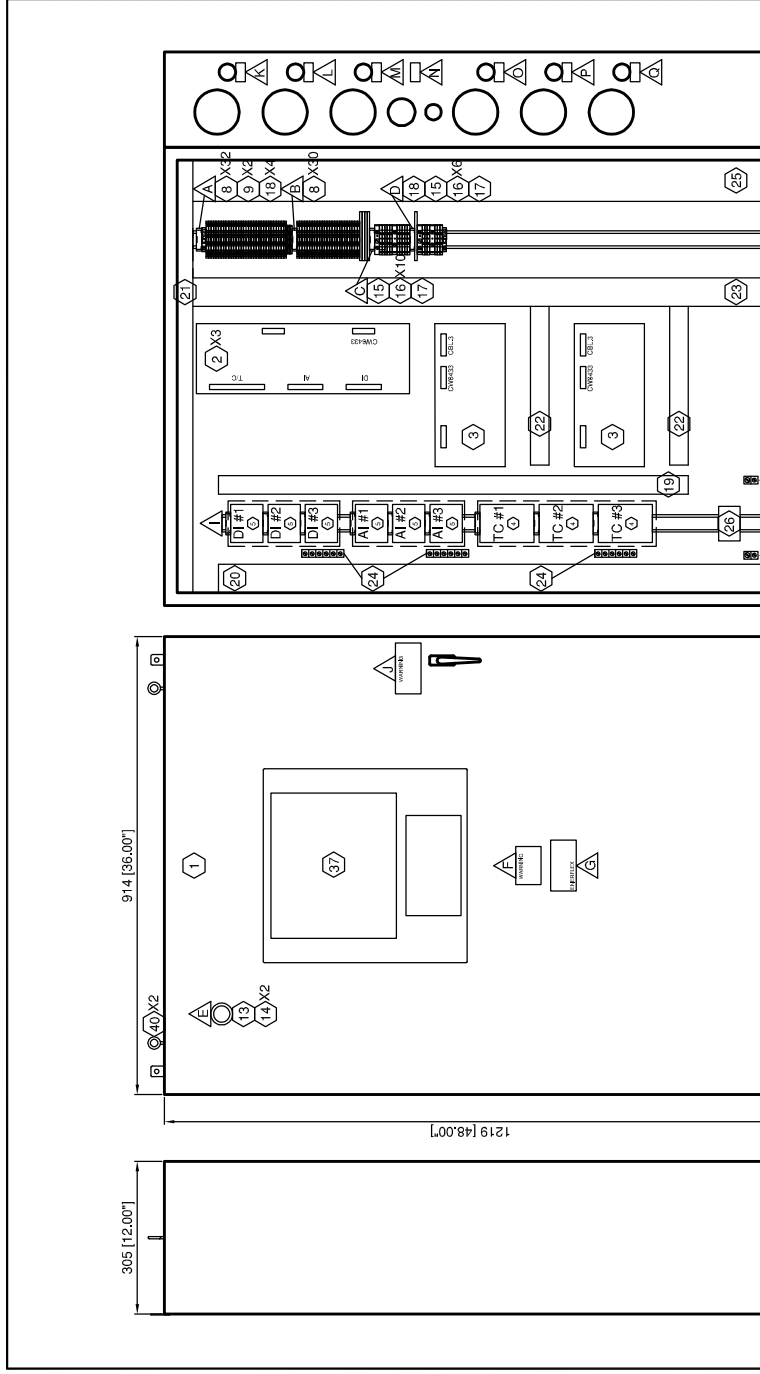
Syntech
 Syntech Number: 5190158-03
 Customer Drawing Number: 0504440
 1 of 1
 NTS

BILL OF MATERIALS

ITEM QTY	DESCRIPTION	MODEL #
1	ACE 48"x36"x12" ENCLOSURE c/w FEET	ACE483612
3	RC 2000 INPUT MODULE	CW4789-1
2	RC 2000 OUTPUT MODULE	CW6218-2
3	WIELAND .40 PIN TERMINATION BLOCK	87.210.2208.3 (ENERFLEX SUPPLY)
5	WIELAND .26 PIN TERMINATION BLOCK	87.210.2005.3 (ENERFLEX SUPPLY)
6	WIELAND .26 PIN TERMINATION BLOCK	87.210.2005.3 (ENERFLEX SUPPLY)
7	WIELAND .26 PIN TERMINATION BLOCK	87.210.2005.3 (ENERFLEX SUPPLY)
8	WDL 2.5 STACKED FEED THROUGH TERM.	102150
9	WEID. WPE 4 GROUND TERMINAL	101010
10	WEID. WPE 4 GROUND TERMINAL	101010
11	WEID. WPE 4 GROUND TERMINAL	101010
12	WEID. WPE 4 GROUND TERMINAL	101010
13	WEID. WPE 4 GROUND TERMINAL	101010
14	AB RED PUSH BUTTON	800T-XP6
15	INC CONTACT BLOCK	800T-XD3P
16	WED SAKS 1.35 FUSED TERMINAL	50162
17	WED WDU 2.5 FEED THROUGH TERMINAL	102030
18	WEL. SLIM LINE RELAY	80.010.4000.0
19	1X2 GRAY PANDUIT	FX2L06
20	1X2 GRAY PANDUIT	FX2L06
21	1X2 WHITE PANDUIT	FX3WH6
22	1X3 WHITE PANDUIT	FX3WH6
23	2X3 WHITE PANDUIT	FX3WH6
24	GROUND BAR	FX3WH6
25	LOT 3X3 WHITE PANDUIT	FX3WH6
26	WEID. SPARE FUSE HOLDER	79.4780001
27	WEID. SPARE FUSE HOLDER	79.4780001
28	WEID. SPARE FUSE HOLDER	79.4780001
29	ILSCO ISOLATED GROUND LUG	-
30	ILSCO PANEL GROUND LUG	-
31	ILSCO PANEL GROUND LUG	-
32	ILSCO PANEL GROUND LUG	-
33	TS-35 MOUNTING RAIL	38540
34	EW 35 END STOPS	38556
35	SCHT5s TERMINAL STRIP MARKERS	163193
36	SCHT5s TERMINAL STRIP MARKERS	163193
37	QIMREX 10" TOUCH SCREEN c/w KEYPAD	RC2000-10T
38	QIMREX 10" TOUCH SCREEN c/w KEYPAD	RC2000-10T
39	QIMREX 10" TOUCH SCREEN c/w KEYPAD	RC2000-10T
40	LIFTING EYE HOOKS	BS12312A
41	LIFTING EYE HOOKS	BS12312A

LAMACOID SCHEDULE

ITEM QTY	TEXT	SIZE
A	INCENDIVE IO BOARD #1	SCHT5s
B	INCENDIVE IO BOARD #2	SCHT5s
C	24 VDC DISTRIBUTION	SCHT5s
D	IGNITION DISTRIBUTION	SCHT5s
E	PANEL SHUTDOWN	1" X 3"
F	WARNING EXPLOSION HAZARD DO NOT REPLACE FUSES OR WIRES UNLESS POWER HAS BEEN SWITCHED OFF OR THE AREAS KNOWN TO BE NON-HAZARDOUS KNOWN TO BE NON-HAZARDOUS	2" X 3" WHT/RED
G	ENERFLEX CSA LAMACOID	2" X 4"
H	NON-INCENDIVE IO	SCHT5s
I	DISCONNECT CABLE CONNECTION TO INPUT / OUTPUT BOARDS BEFORE WELDING	2" X 4" WHT/RED
J	DISCONNECT CABLE CONNECTION TO INPUT / OUTPUT BOARDS BEFORE WELDING	2" X 4" WHT/RED



LAMACOID SCHEDULE

ITEM QTY	TEXT	SIZE
K	GOVERNOR	3/4" X 1.5"
L	BYPASS VALVE #1	3/4" X 1.5"
M	BYPASS VALVE #2	3/4" X 1.5"
N	FIRELOOP	3/4" X 1.5"
O	LOUVER 1	3/4" X 1.5"
P	CONTROL VALVE	3/4" X 1.5"
Q	LOUVER 2	3/4" X 1.5"
R	CONTROL VALVE	3/4" X 1.5"
S	LOUVER 3	3/4" X 1.5"
T	CONTROL VALVE	3/4" X 1.5"

Syntech

5190158-01
050440

Project Title: FORT ENERGY C/O TRIDENT RC10338

Control Panel Panel Layout

Sheet Number: 1 of 1

Customer: NTS

WIRE COLOR LEGEND

- 1.-24VDC; RED
- 2.-24VDC; YELLOW
- 3.-ANALOG INPUT
- 4.-ANALOG INPUT OUTPUT -; BLACK
- 5.-ANALOG INPUT OUTPUT +; WHITE
- 6.-ANALOG LOOP; PURPLE

PANEL WIRING

- 1. FEED THROUGH TERMINAL
- 2. FUSED THROUGH TERMINAL
- 3. ANALOG INPUT OUTPUT -; BLACK
- 4. ANALOG INPUT OUTPUT +; WHITE
- 5. DISCONNECT TERMINAL

Revision History:

Rev.	Start Date	By	Date	Checked	App'd
1	12.28.2005	AK	12.28.2005	SC	
2	01.09.2005	AK	01.09.2005	SC	
3	20.09.2005	AK	20.09.2005	SC	

THIS DRAWING IS DESIGNED ENTIRELY FOR USE BY SYNTech AND IS SOLE PROPERTY OF SYNTech. NO LIABILITY FOR REPRODUCTION OF THE DRAWING CONTENTS.