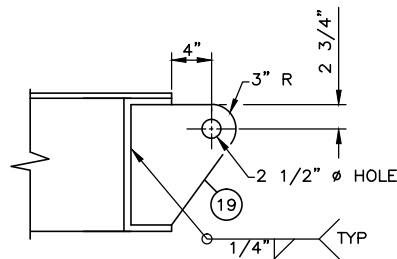


BILL OF MATERIALS			
TAG NO.	QNTY.	DESCRIPTIONS	MAT'L SPEC.
1	2	C8 x 11.5# (14'-0")	G40.21-44W
2	2	C8 x 11.5# (7'-7 1/2")	G40.21-44W
3	1	C8 x 11.5# (13'-7 1/2")	G40.21-44W
4			
5	2	W6 x 15# (3'-9 3/4")	G40.21-44W
6			
7	2	2" x 2" x 3/16" ANGLE (3'-9 3/4")	G40.21-44W
8	4	2" x 2" x 3/16" ANGLE (3'-9 1/2")	G40.21-44W
9	2	2" x 2" x 3/16" ANGLE (2'-2 3/4")	G40.21-44W
10	1	2" x 2" x 3/16" ANGLE (2'-7 7/16")	G40.21-44W
11	1	2" x 2" x 3/16" ANGLE (2'-10 1/8")	G40.21-44W
12	1	2" x 2" x 3/16" ANGLE (3'-10 7/16")	G40.21-44W
13	1	2" x 2" x 3/16" ANGLE (1'-11 7/8")	G40.21-44W
14	2	2" x 2" x 3/16" ANGLE (2'-8 13/16")	G40.21-44W
15	1	2" x 2" x 3/16" ANGLE (2'-10 13/16")	G40.21-44W
16	1	2" x 2" x 3/16" ANGLE (2'-11 9/16")	G40.21-44W
17			
18	4	BOLTS- 1" DIA. x 3" LG c/w NUT & WASHER	GR 5
19	1	LIFT LUG- 1/2" THK PLATE (SEE DETAIL)	G40.21-44W
20	1	3/16" THK. CHK'D. PLATE (8' x 20')	G40.21-44W

NOTES:

- ALL WELDS TO BE 1/4" ALL AROUND UNLESS OTHERWISE NOTED.
- CROSS MEMBERS TO BE COPE TO MAIN MEMBERS AND FULLY WELDED.
- CHECKER PLATE SEAMS TO BE 100% SEAL WELDED TO MAIN MEMBER.
- UNDERSIDE OF SKID TO BE INSULATED WITH 2" THK. POLYURETHANE SPRAY FOAM.
- ESTIMATED SHIPPING WT : 2,000 LBS



LIFTING LUG DETAIL

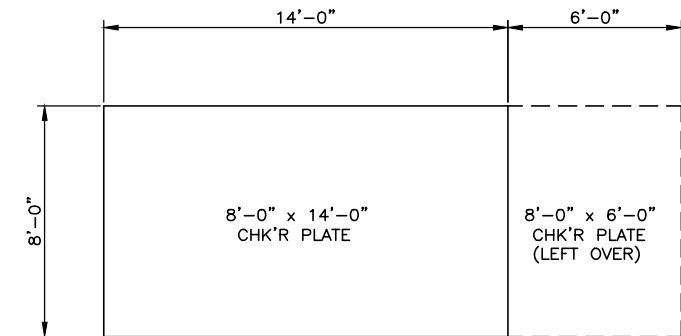


PLATE CUTTING DETAIL

(1) REQ'D
TIME CARD
C-2245-SK

DWG. NO.	REFERENCE DRAWINGS	REV	DESCRIPTION	DATE	BY



CUSTOMER: ENCANA RESOURCES		LOCATION:	
c/o TUNDRA ENGINEERING LTD.			
STRUCTURAL SKID			
24" OD CONDENSATE SEPARATOR PACKAGE (SOUR)			
DATE: 07/14/04	DRN BY: J.J.	SCALE: 1":1'-0"	CHKD BY: APPRD BY: DWG NO: C-2245-D REV: 0