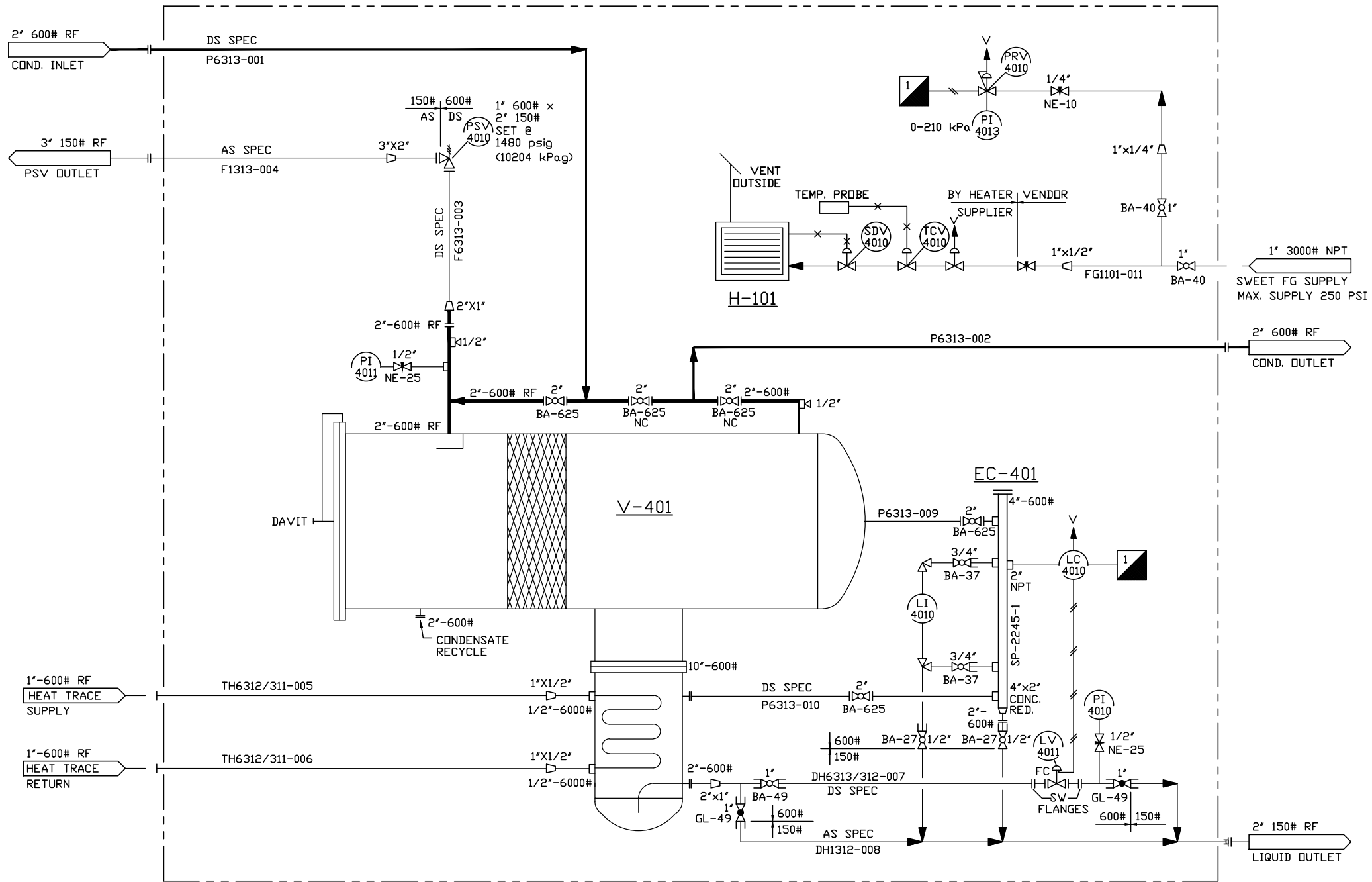


H-101
BUILDING HEATER
 ONE(1) 24000 BTU/HR CATADYNE HEATERS
 c/w REGULATOR, THERMOSTAT, SSOV
 PROTECTION GRILL & VENT HOOD (NATURAL GAS)
 120VAC STARTER

V-401
CONDENSATE CONDITIONER
 SIZE: 24" (610mm) O.D. X 8'-0" (2438mm) S/S 2-PHASE
 DPI 1480 psig (10204 kPa) @ 100°F (38°C) MAX
 CA: 0.125" (3.2mm)
 BDDT: 10" (254mm) OD X 24" (610mm) S/S
 ELEMENT: PECD FG-24 WAFER PACK X 18" (457mm) LONG

EC-401
INSTRUMENT BRIDLE
 114.3mm x 914mm S/S



TAG #'s	QTY	DESCRIPTION
LC 4010	1	Fisher L2 snap acting liquid level controller, 2" NPT connection, vertical PVC displacer, sweet instrument gas
LI 4010	1	Penberthy 2TM4-Nace transparent level gauge, 15" visible length, c/w 3/4" NPT 330J-NQ Nace gauge valves
LV 4011	1	1" NPT Fisher D2 Flopro control valve, 3/8" adjustable trim, F.C., 0-35 psi signal, Nace
PI 4010	2	0-1500 psi, 4" face, dual scale, S.S., L.F., 1/2" L.M., Wika 233.54, /4011
PI 4013	1	0-30 psi, 2 1/2" face, dual scale, L.F., 1/4" L.M., Nuova Fima 10/3A-210
PRV 4010	1	1/4" NPT Fisher 67 CFR regulator, 0-35 psi range, tapped vent, Sweet
PSV 4010	1	1" 600# x 2" 150# RF Farris 26DA13-120 relief valve set @ 1480 psig, Nace primary (PSV to be witnessed by third party inspector)
BA 625	5	2" 600# RF reg. port ball valve, Nutron T3-R20R06-S, Nace
BA 49	1	1" SW ball valve, Worcester 4446YV-SW, 3000# WOG, Nace
BA 40	2	1" NPT ball valve, Nutron T3-R10S30-B, 3000# WOG
BA 37	2	3/4" SW x NPT ball valve, Worcester 4446YV-SW/SE, 3000# WOG, Nace
BA 27	2	1/2" SW x NPT ball valve, Worcester 4446YV-SW/SE, 3000# WOG, Nace
GL 49	2	1" SW globe valve, Navco GL-R10S08A12, Class 800#, Nace
NE 10	1	1/4" NPT needle valve, Century CM2-3-F22T-BV, Sweet
NE 25	2	1/2" NPT needle valve, Century CM2-1-F44T-B-A, S.S., Nace
H 101	1	24,000 BTU/HR Catadyne heater, c/w regulator, thermostat, SSOV, protection grill, 120 VAC start, vent hood (natural gas)

NOTE:
 ALL TUBING TO BE 316 SS c/w 316 SS SWAGelok TUBE FITTINGS
 VENT ALL INSTRUMENTS (INCLUDING REGULATOR BONNET) LOCALLY TO OUTSIDE BUILDING WALL.
 TAG ALL INSTRUMENTS WITH DWG. TAG NUMBERS AND WIRE TO EACH INSTRUMENT.

(1) REQ'D
 TIME CARD
 C-2245-PP

DWG. NO.	REFERENCE DRAWINGS	REV	DESCRIPTION	DATE	BY
		1	REVISED BRIDLE TO 4"; REVISED AS NOTED.	07/28/04	J.J.
		2	REVISED AS PER BUILT	09/28/04	Y.P.



CUSTOMER: ENCANA RESOURCES		LOCATION:	
c/o TUNDRA ENGINEERING LTD.			
MECHANICAL FLOW DIAGRAM			
24" OD CONDENSATE SEPARATOR PACKAGE (SOUR)			
DATE: 06/14/04	DRN BY: Y.P.	SCALE: NTS	CHKD BY: APPRD BY: DWG NO: C-2245-B REV: 2