

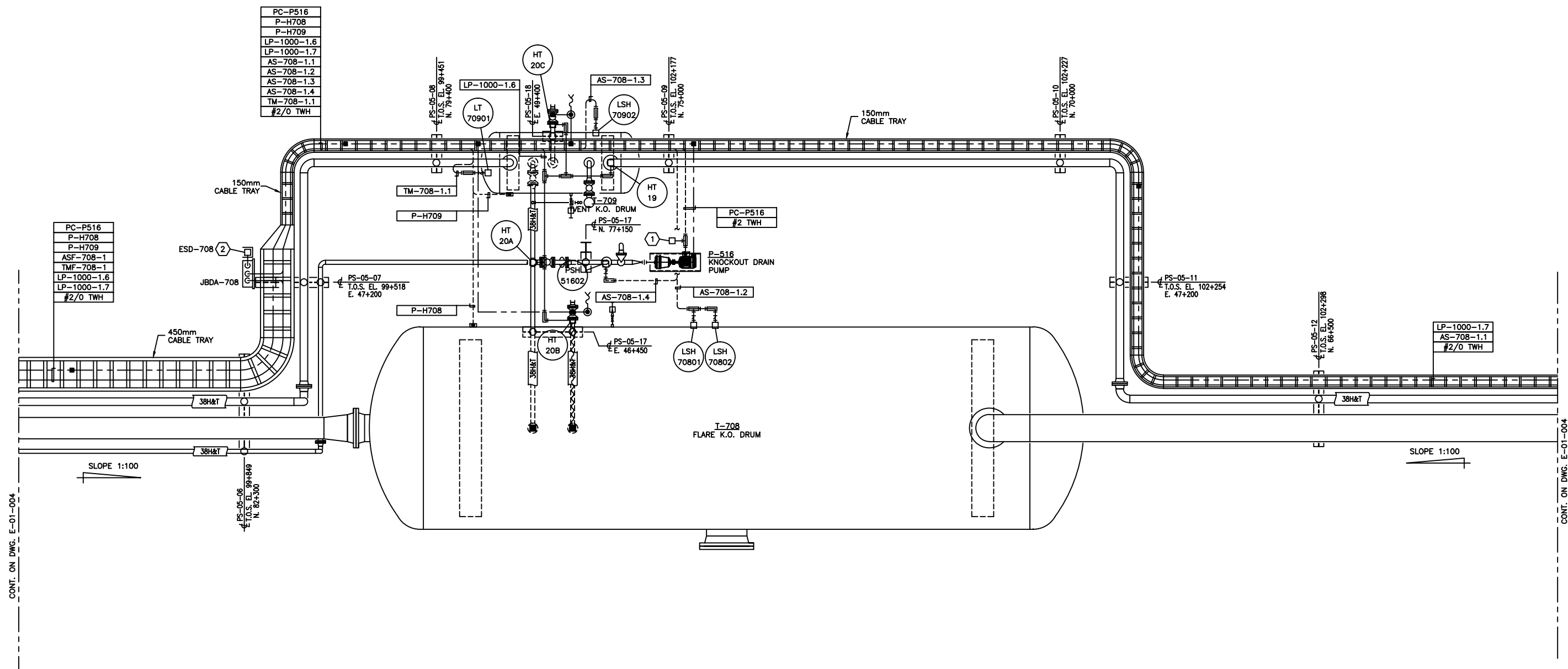


BILL OF MATERIALS

(AS REQUIRED)

MATERIALS

1. CROUSE HINDS #DSFS933 ON/OFF SWITCH, 277VAC, 20AMPS MAX. SINGLE POLE, CLASS 1, DIV 1, EXPLOSION PROOF.
2. CROUSE HINDS CEAG #GHG432KLM00SGT551211/2511 ESD PUSHBUTTON c/w RED SHROUD AND MIN. 4" x 6" ESD WARNING LAMICOID. CLASS 1, ZONE 1, EXPLOSION PROOF.



CONT. ON DWG. E-01-004

CONT. ON DWG. E-01-004

PERMIT STAMP:

NO.	REVISION	PROJECT	DSN	DRN	CHK'D	APP'D	DATE
4	POST CONSTRUCTION REVISIONS	65165	BGO	DC	BGO		07.05.14
3	POST CONSTRUCTION REVISIONS	43874	BGO	AO	BGO		05.12.09
2	ISSUED FOR CONSTRUCTION	43874	BGO	FC	BGO	RLB	05.09.02
1	ISSUED FOR BID	43874	BGO	FC	BGO		05.08.23
0	ISSUED FOR APPROVAL	43874	BGO	FC	BGO		05.08.22

GENERAL NOTES:

1. "POST CONSTRUCTION DRAWINGS" ARE GENERATED FROM CONSTRUCTION CHANGE INFORMATION SUBMITTED TO BOWER DAMBERGER ROLSETH ENGINEERS AND LISTED BY THE CONSTRUCTION FIELD SUPERVISOR AND OR VENDOR CONTRACTORS. ANY CHANGES NOT DOCUMENTED WILL NOT BE MADE ON THIS DRAWING AND THEREFORE THE DRAWING MAY NOT BE AN ACCURATE REPRESENTATION OF THE CONSTRUCTED FACILITY.
2. PRIOR TO THE COMMENCEMENT OF ANY CONSTRUCTION AND OR EXPANSION IT SHALL BE THE RESPONSIBILITY OF THE OWNER OF ANY FACILITY TO VERIFY THE LOCATION AND STATUS OF ALL EXISTING ELECTRICAL EQUIPMENT OR WIRING.
3. ANY REVISIONS MADE TO EXISTING EQUIPMENT, PIPING OR ELECTRICAL ON A FACILITY NOT DESIGNED BY BDR, INC. LTD. IS ONLY SHOWN AS A REPRESENTATION OF WHAT EXISTS AND MUST BE VERIFIED BY THE OWNER.

	BY	DATE
DESIGN	BGO	05.08.22
DRAWN	FC	05.08.22
CHK'D	BGO	05.09.02
APP'D	RLB	05.09.02
L.S.D.	11-17-63-06	W5M



FORT ENERGY CORP.		
CLEARWATER GAS PLANT FLARE K.O. DRUM & VENT K.O. DRUM AREA ELECTRICAL LAYOUT		
SCALE	DRAWING NUMBER	REV
1 : 30	D-43874-E-21-001	4