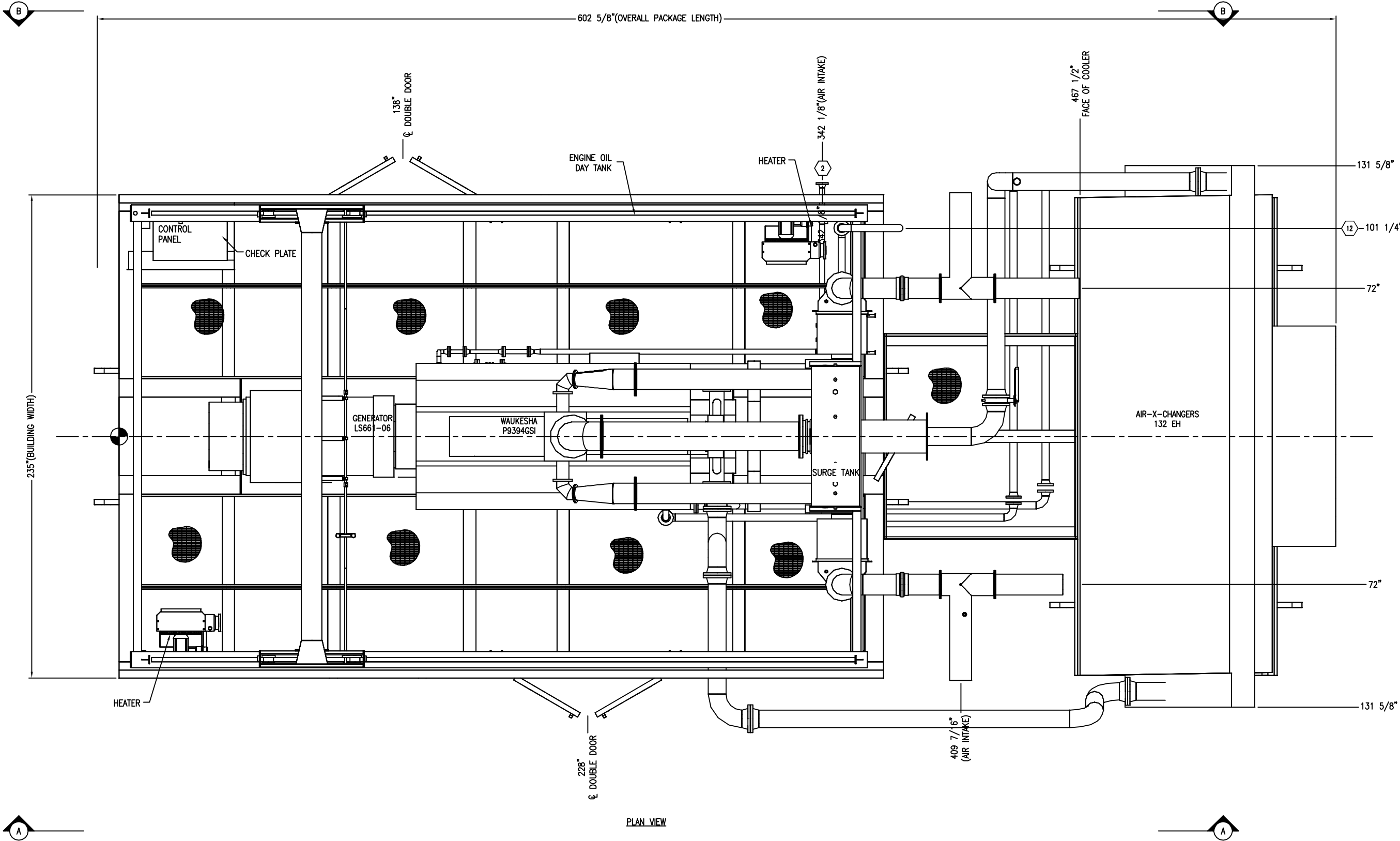


PLOT DATE: Mar 27, 2014, jcul P:\\_SPE CAD Canada Projects\E000873-01 Encana co Gas Drive P9394GSI 1600KW Power Gen\4. Drafting\E000873-01-200.dwg



NOZZLE SCHEDULE				
MARK	SERVICE	SIZE	RATING	TYPE
1	-	-	-	-
2	FUEL GAS INLET	2"	150#	RF
3	-	-	-	-
4	-	-	-	-
5	-	-	-	-
6	-	-	-	-
7	-	-	-	-
8	-	-	-	-
9	-	-	-	-
10	-	-	-	-
11	-	-	-	-
12	VENT	3"	-	PIPE

GENERAL SPECIFICATIONS	
OPERATING PACKAGE DIMENSIONS:	
LENGTH	537 3/8"
WIDTH	232 1/4"
HEIGHT	212 3/4"
WEIGHT	TBD
SHIPPING DIMENSIONS (Single Piece):	
LENGTH	-
WIDTH	-
HEIGHT	-
WEIGHT	-
CENTER OF GRAVITY:	
X	"X" FROM REFERENCE POINT: TBD
Y	"Y" FROM REFERENCE POINT: TBD
Z	"Z" FROM REFERENCE POINT: TBD
Z' DIM FROM TOP OF SKID	
BRIDGE CRANE RATING	5 TON
SEAL PAN	FLAT
LOADING METHOD	CRANE/JACK & ROLL
NOTES:	
1. ALL (Z) DIMENSIONS TAKEN FROM TOP OF SKID.	
2. ALL SKID EDGE CONNECTIONS ±1/4" TOLERANCE.	
3. ALL TAIL DIMENSIONS FROM REFERENCE POINT.	
4. SKID DEPTH: 23.9"	

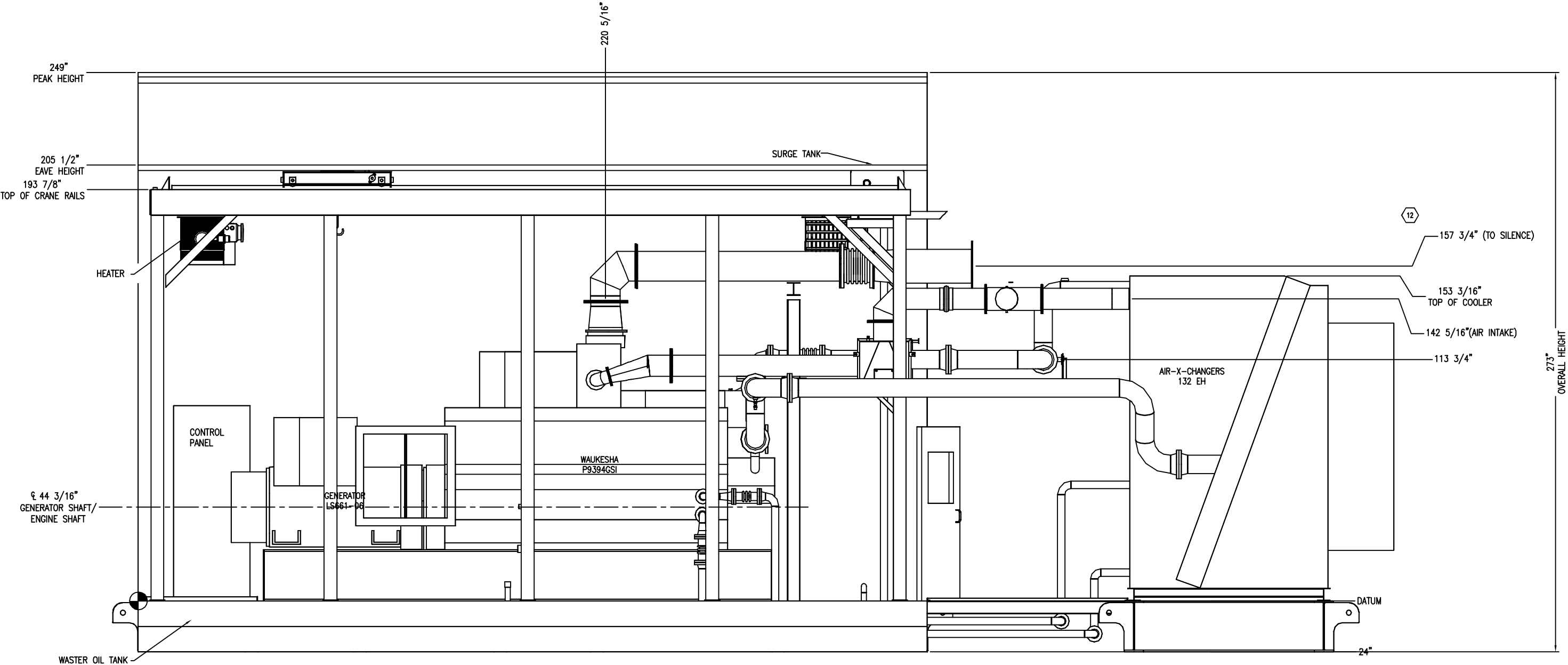
FOR APPROVAL  
PLEASE SUBMIT ONE SET OF  
APPROVED DRAWINGS BY  
NAME J. CUI DATE MAR 25/13

						DATE	DEC 13/13	SCALE	1/2"=1'-0"	ENCANA CAVALIER 1600 KW GENERATOR PACKAGE	<b>ENERFLEX</b> Calgary, Alberta, Canada	GENERAL ARRANGEMENT					
D	ISSUED FOR APPROVAL	03/25/14	JC	JY	DRAWN BY	J. CUI	CHECKED BY	J. YUAN	APPROVED BY				J. GARCIA				
C	ISSUED FOR APPROVAL	03/03/14	JC	JY	PROJECT MANAGER	K. ROBERTSON	PROJECT ENGINEER	J. GARCIA									
B	ISSUED FOR APPROVAL	02/28/14	JC	JY	CUST PO	GD2013-008											
A	ISSUED FOR APPROVAL	12/20/13	JC	JY													
REV	DESCRIPTION		DATE	BY	APR	APEGGA PERMIT No: P8651		OPER. CODE	198/298/490/511/591	WORK ORDER	E000873-01	DWG NO	E000873-01-201	SHT	1	REV	D

THE INFORMATION CONTAINED HEREIN IS THE CONFIDENTIAL PROPERTY OF ENERFLEX, LTD. AND IS NOT FOR PUBLICATION, AND NO PART THEREOF SHALL BE COPIED OR COMMUNICATED TO A THIRD PARTY WITHOUT AUTHORIZATION FROM ENERFLEX, LTD.

the engine exhaust system will be supported with its own structure and its a shop to fit procedure.  
the engine exhaust support will be included in the AS BUILDT GA.

P:\SAP CAD Canada Projects\000873-01 Encana co Gas Drive P8394GSI 1600KW Power Gen\4. Drafting\000873-01-200.dwg  
PLOT DATE Mar 27, 2014, jcul



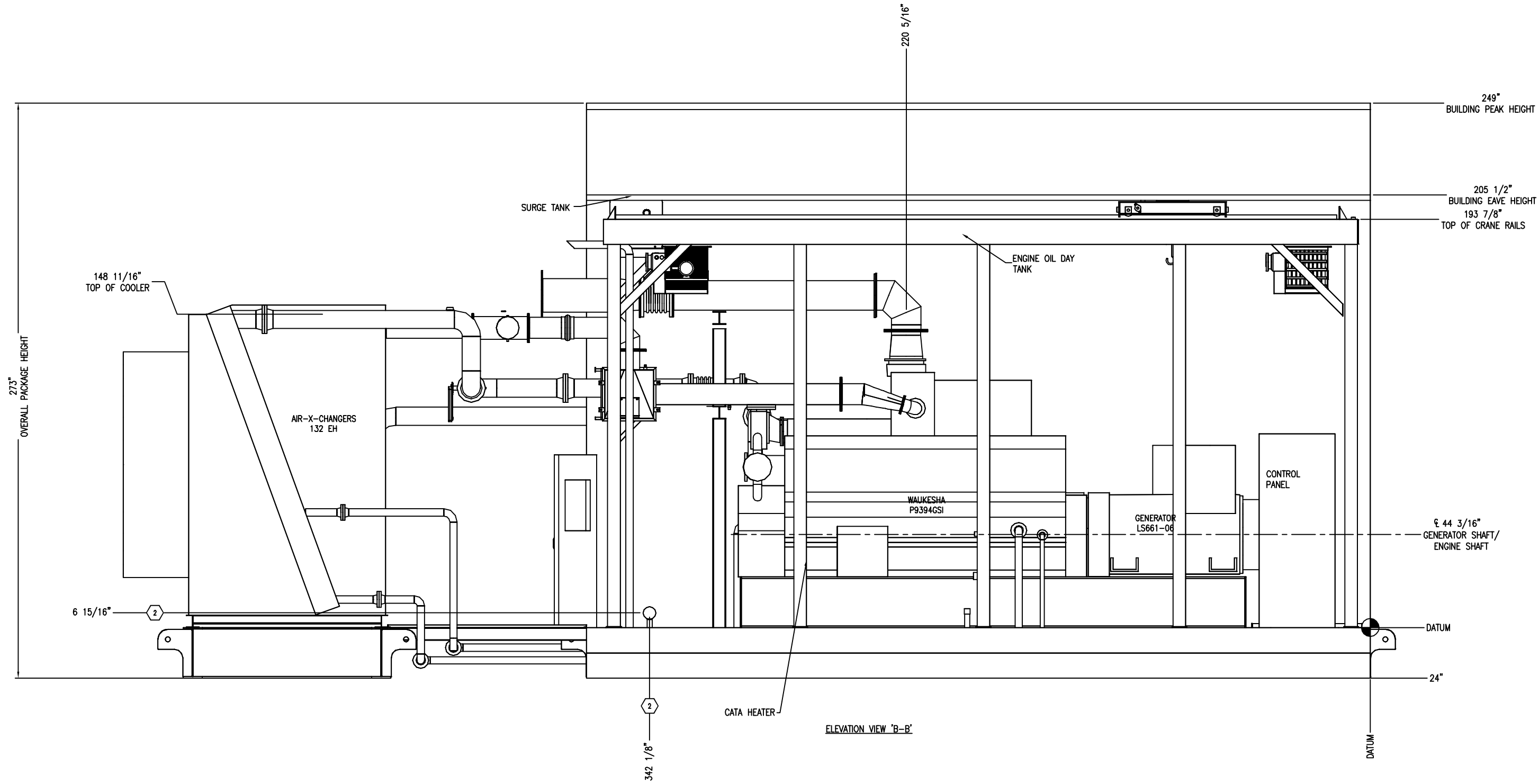
ELEVATION VIEW 'A-A'

FOR APPROVAL  
PLEASE SUBMIT ONE SET OF  
APPROVED DRAWINGS BY  
NAME J. CUI DATE MAR 25/13

						DATE	DEC 13/13	SCALE	1/2"=1'-0"	ENCANA CAVALIER 1600 KW GENERATOR PACKAGE	<b>ENERFLEX</b> Calgary, Alberta, Canada	GENERAL ARRANGEMENT ELEVATION 'A-A'					
D	ISSUED FOR APPROVAL	03/25/14	JC	JY	DRAWN BY	J. CUI	CHECKED BY	J. YUAN	APPROVED BY						J. GARCIA		
C	ISSUED FOR APPROVAL	03/03/14	JC	JY	PROJECT MANAGER	K. ROBERTSON	PROJECT ENGINEER	J. GARCIA									
B	ISSUED FOR APPROVAL	02/28/14	JC	JY	CUST PO	GD2013-008											
A	ISSUED FOR APPROVAL	12/20/13	JC	JY	APEGGA PERMIT No: P8651			OPER. CODE: 198/298/490/511/591	WORK ORDER						E000873-01		
REV	DESCRIPTION		DATE	BY	APR						DWG NO	E000873-01-201		SHT	2	REV	D

THE INFORMATION CONTAINED HEREIN IS THE CONFIDENTIAL PROPERTY OF ENERFLEX, LTD. AND IS NOT FOR PUBLICATION, AND NO PART THEREOF SHALL BE COPIED OR COMMUNICATED TO A THIRD PARTY WITHOUT AUTHORIZATION FROM ENERFLEX, LTD.

P:\\_SAP C&P Canada Projects\E000873-01 Encana co Gas Drive P9394CSI 1600kW Power Gen\4. Drafting\E000873-01-200.dwg PLOT DATE Mar 27, 2014, jcul

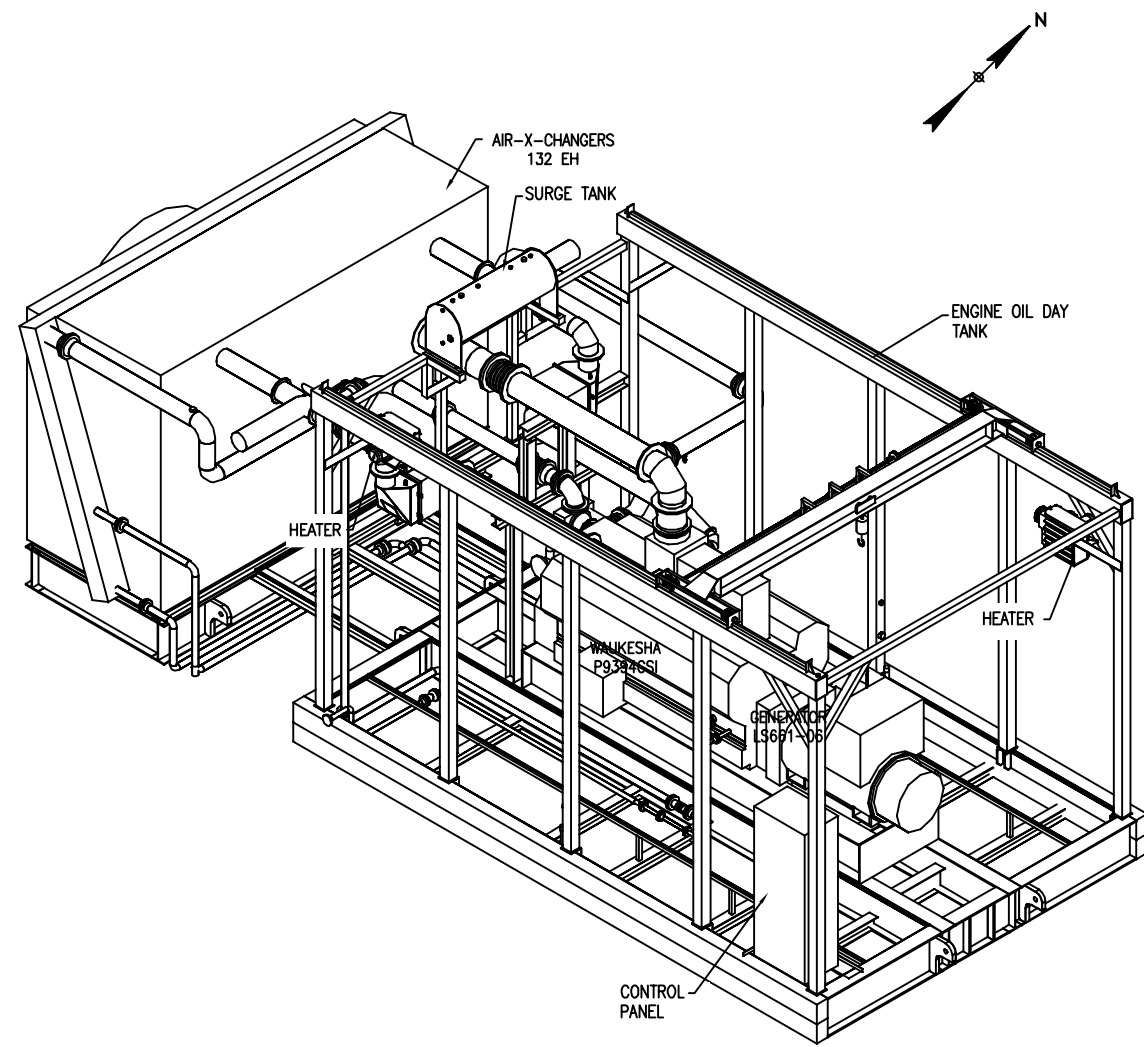
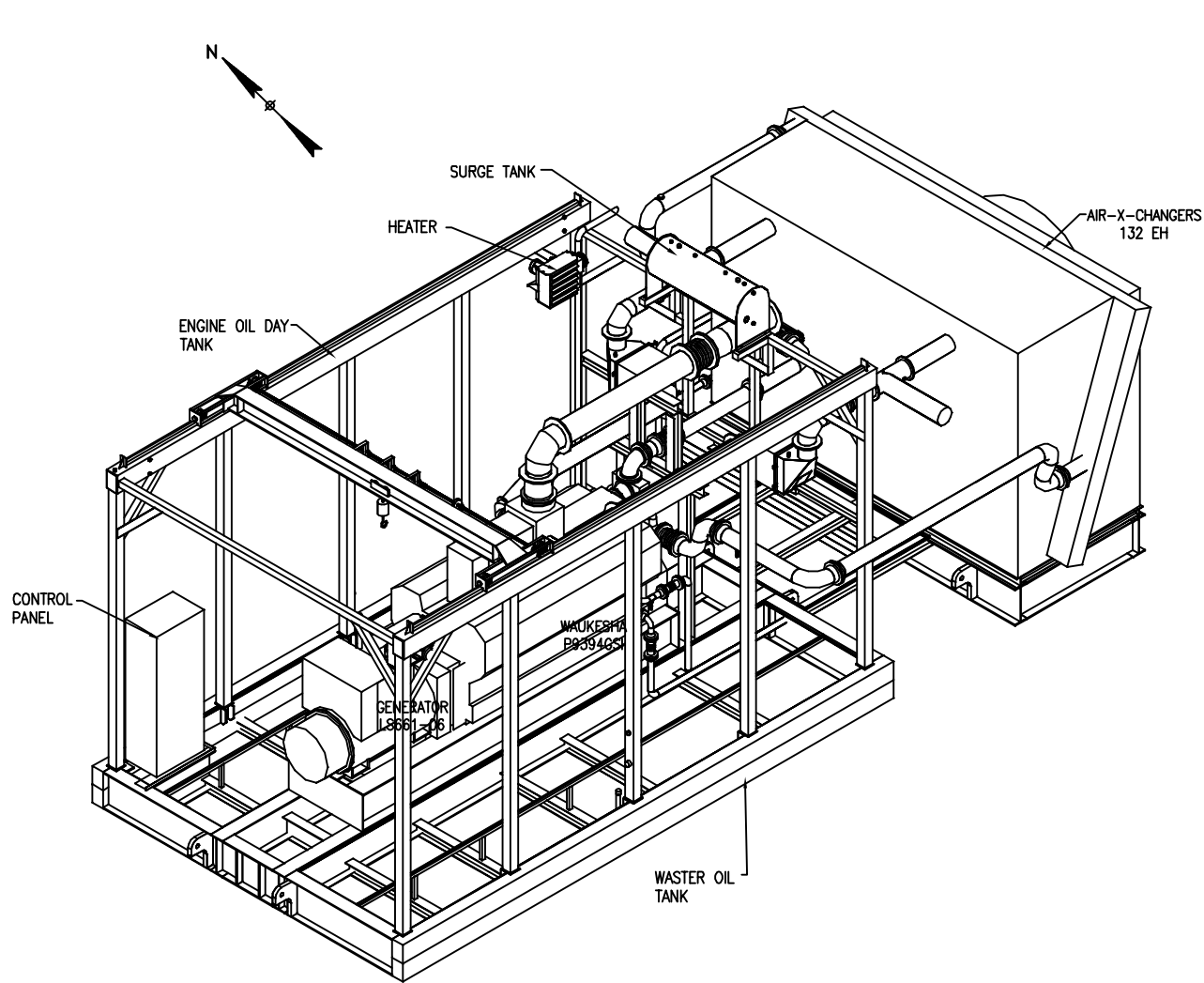


**FOR APPROVAL**  
PLEASE SUBMIT ONE SET OF  
APPROVED DRAWINGS BY  
NAME J. CUI DATE MAR 25/13

						DATE	DEC 13/13	SCALE	1/2"=1'-0"	ENCANA CAVALIER 1600 KW GENERATOR PACKAGE	<b>ENERFLEX</b> Calgary, Alberta, Canada	GENERAL ARRANGEMENT ELEVATION 'B-B'					
D	ISSUED FOR APPROVAL	03/25/14	JC	JY	DRAWN BY	J. CUI	CHECKED BY	J. YUAN	APPROVED BY						J. GARCIA		
C	ISSUED FOR APPROVAL	03/03/14	JC	JY	PROJECT MANAGER	K. ROBERTSON	PROJECT ENGINEER	J. GARCIA									
B	ISSUED FOR APPROVAL	02/28/14	JC	JY	CUST PO	GD2013-008											
A	ISSUED FOR APPROVAL	12/20/13	JC	JY													
REV	DESCRIPTION		DATE	BY	APR	APEGGA PERMIT No: P8651		OPER. CODE	198/298/490/511/591	WORK ORDER	E000873-01	DWG NO	E000873-01-201	SHT	3	REV	D

THE INFORMATION CONTAINED HEREIN IS THE CONFIDENTIAL PROPERTY OF ENERFLEX, LTD. AND IS NOT FOR PUBLICATION, AND NO PART THEREOF SHALL BE COPIED OR COMMUNICATED TO A THIRD PARTY WITHOUT AUTHORIZATION FROM ENERFLEX, LTD.

P:\\_SAP CAP Canada Projects\E000873-01 Encana co Gas Drive P83946SI 1600KW Power Gen\4. Drafting\E000873-01-200.dwg PLOT DATE Mar 27, 2014, jcul



**FOR APPROVAL**  
PLEASE SUBMIT ONE SET OF  
APPROVED DRAWINGS BY  
NAME J. CUI DATE MAR 25/13

						DATE	DEC 13/13	SCALE	1/2"=1'-0"	ENCANA CAVALIER 1600 KW GENERATOR PACKAGE	<b>ENERFLEX</b> Calgary, Alberta, Canada	GENERAL ARRANGEMENT ISO VIEW					
D	ISSUED FOR APPROVAL	03/25/14	JC	JY	DRAWN BY	J. CUI	CHECKED BY	J. YUAN	APPROVED BY						J. GARCIA		
C	ISSUED FOR APPROVAL	03/03/14	JC	JY	PROJECT MANAGER	K. ROBERTSON	PROJECT ENGINEER	J. GARCIA									
B	ISSUED FOR APPROVAL	02/28/14	JC	JY	CUST PO	GD2013-008											
A	ISSUED FOR APPROVAL	12/20/13	JC	JY													
REV	DESCRIPTION		DATE	BY	APR	APEGA PERMIT No: P8651		OPER. CODE	198/298/490/511/591	WORK ORDER	E000873-01	DWG NO	E000873-01-201	SHT	4	REV	D

THE INFORMATION CONTAINED HEREIN IS THE CONFIDENTIAL PROPERTY OF ENERFLEX, LTD. AND IS NOT FOR PUBLICATION, AND NO PART THEREOF SHALL BE COPIED OR COMMUNICATED TO A THIRD PARTY WITHOUT AUTHORIZATION FROM ENERFLEX, LTD.