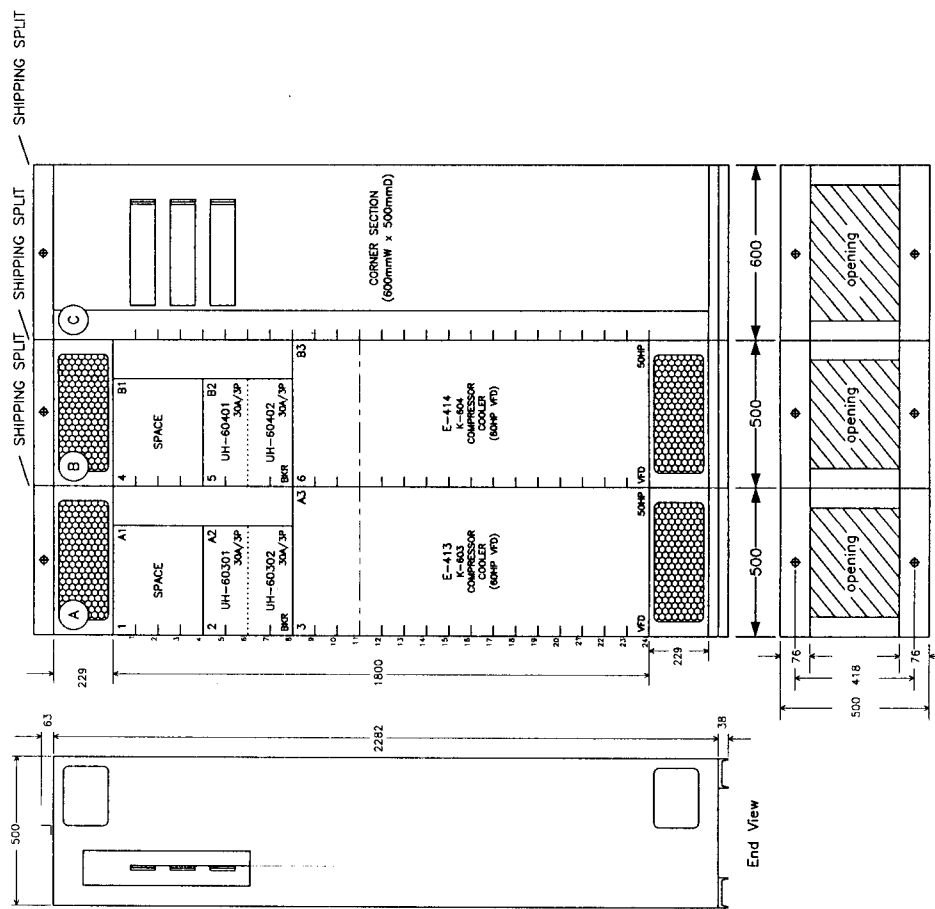


Branch to fill in below:

Section	Structure Type	Horizontal Bus	Vertical Bus	Horizontal End Bus (N/A) 1/4x1/4
A, B	NP3-050X050+PWT	H25-6SPV050	NV04-65	50/65FP050-BT
C	TOC #....			

Unit	Qty	Drawer Type	Fixed Mounting Plate Type	Door Type	Hole Code	"PP" Code
1	1	DUR4		NDP038-4+P		
2	1	DUR4		NDP038-4+P	200/201	
3	1		FPP050-3W/13W	NDP050-16+P		
4	1	DUR4		NDP038-4+P	200/201	
5	1	DUR4		NDP038-4+P	200/201	
6	1		FPP050-3W/13W	NDP050-16+P		

Busbars: Tin-plated Copper (Standard)  
 Main Bus: 800A  1200A  1600A  2000A  2500A  3000A   
 Vertical Bus: Std. 400A  600A  Ground Bus: 400A  
 Short Circuit Bracing: 65kV  
 Incoming Entry: Top  Bottom  Incoming Section: J No./Phase: 8  
 Outgoing Lines: Top  Bottom  Cable Size: 500MCM Al  Cu   
 Unit Mounting: Front Only Enclosure Type: Emax 1A  
 Finish: Standard Grey Back Access: Yes  No   
 Notes - Factory Only:  
 - CUT THE VERTICAL BUS IN SECTIONS 'A' & 'B' AT 10 MOD. & c/w AMB-500, TR-PO50X050  
 - UNITS #3 & #6 16MOD DOOR c/w TOC #4035



Rev.	Description	Date	Appr.
1	UPDATED AS APPROVED	MAY 27 05	AH

Notes:  
 - PHASE IDENTIFICATION IS REQUIRED

PROJECT CLEARWATER GAS PLANT MCC-100  
 CUSTOMER FORT ENERGY CORPORATION  
 LOCATION 11-17-63-06 WSM  
 QUOTATION Q21-05-0298 MOELLER ORDER # 21-05-3123

Wiring: Class: 1 Type: B Coil volts: 120  
 Line volts: 480 Phase: 3 Wires: 3 Hertz: 60


Checked: A. HUFALAR  
 Approved: [Signature]  
 Date: MAY 06 05

MOELLER MOTOR CONTROL CENTRE  
 Description: MCC 3000  
 Dwg # 3WD-463-21-05-3123-1  
 CALGARY BRANCH

Unit No.	Qty	HP	FLA	Mag trip setting (A)	Power wire size (sqg)	MPA	Starter Type	Catalogue Number			Pilot Devices		Control Transformer VA	Notes	Unit Height (mod)	Unit Wiring Diagram	Unit Layout Drawing No.
								Contactor DIL	Circuit Protective Device	Overload Relay	Pushbuttons or Selector Switch	Lights R G SP					
1	1						SPACE								4	21-05-3123-L	
2	1		30/30	360/360	2x6		DUAL BKR								4	21-05-3123-L	
3	1	50	65	780	4		VFD					50	0.5	SEE DRAWING FOR PARTS INFORMATION	16	21-05-3123-N	
4	1						SPACE								4		
5	1		30/30	360/360	2x6		DUAL BKR								4	21-05-3123-L	
6	1	50	65	780	4		VFD					50	0.5	SEE DRAWING FOR PARTS INFORMATION	16	21-05-3123-N	

**Wiremarkers:** Yes  No   
**Wiremarker Type:** PVC  Heatshrink   
**Control Wire Size:** 16AWG  14AWG   
**In Plated Control:** Yes  No

Rev.	1	DESCRIPTION	DATE	APPR.
		UPDATED AS APPROVED	MAY 27 05	AH

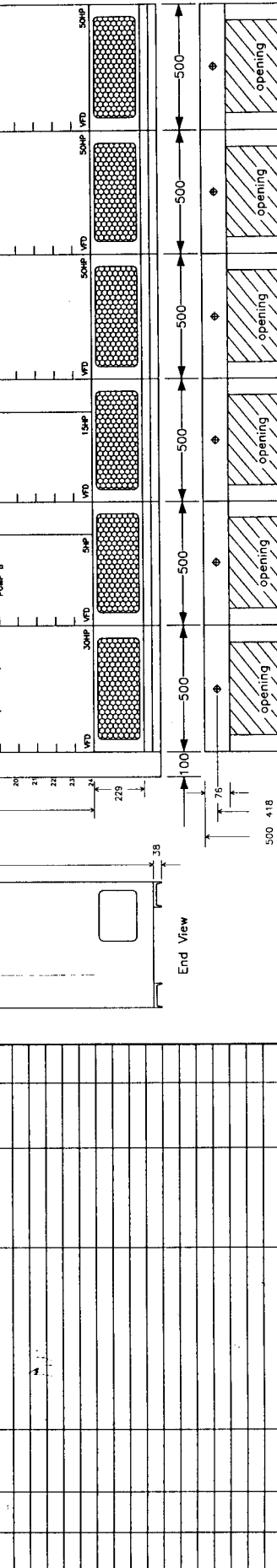
**MOELLER**   
 Moeller order # 21-05-3123  
 Cust. order # 43874-13  
 MCC NOTES  
 CLEARWATER GAS PLANT  
 FORT ENERGY CORPORATION

**CALGARY BRANCH**  
 Dwg # 3WD-463-21-05-3123-1A

Branch to fill in below:

Structure Type	Horizontal Bus	Vertical Bus	Horizontal Gnd. Bus (NHG1-14x1/4)
TS	P3-010X050+NM1TC25-050/068S		+ HG1-1/4x1/4
D, C, H, I	NP3-050X050+PWT H25-65P/050	NV04-65	50/65P050-BT
E	NP3-050X050+VW H25-65P/050	NV04-65	50/65P050-B
F	NP3-050X050+PWB H25-65P/050	NV04-65	50/65P050-B

Unit Qty.	Drawer Type	Fixed Mounting Plate Type	Door Type	Hole Code	"PP" Code
7	DUR12		NDP038-12+P	174	
8	DUR12	FPP050-3W/9W	NDP050-12+P	174	
9	DUR12		NDP038-12+P	174	
10	DUR12		NDP038-12+P	174	
11	DUR12	FPP050-12W-SP	NDP050-12+P	174	
12	DUR12		NDP038-12+P	174	
13	DUR4		NDP038-4+P	200/201	
14	DUR4	FPP050-3W/13W	NDP050-16+P		
15	DUR4		NDP038-4+P		
16	DUR4	FPP050-3W/13W	NDP050-16+P		
17	DUR4		NDP038-4+P	200/201	
18	DUR4	FPP050-3W/13W	NDP050-16+P		
19	DUR4		NDP038-4+P		
20	DUR4		NDP038-4+P	200/201	
21	DUR4	FPP050-3W/13W	NDP050-16+P		



Busbars: Tin-plated Copper (Standard)  
 Main Bus: 800A  1200A  1600A  2000A  2500A  3000A   
 Vertical Bus: Std. 400A  600A  Ground Bus: 400A  
 Short Circuit Bracing: 65KA  
 Incoming Entry: Top  Bottom  Incoming Section: J No./Phase: 8  
 Outgoing Lines: Top  Bottom  Cable Size: 500MCM AI  Cu   
 Unit Mounting: Front Only  
 Enclosure Type: Emax 1A  
 Back Access: Yes  No   
 Notes - Factory Only:  
 - CUT THE VERTICAL BUS IN SECTION 'D' AT 14 MOD. & c/w AMB-500, TR-P050X050  
 - CUT THE VERTICAL BUS IN SECTIONS 'G', 'H' & 'I' AT 10 MOD. & c/w AMB-500, TR-P050X050  
 - UNITS #7, #8, #9, #10, #12, #15, #18 & #21 DOOR c/w TOC #4035

Rev.	Description	Checked	Approved	Date	Appr.
1	UPDATED AS APPROVED			MAY 27 05	AH

PROJECT CLEARWATER GAS PLANT MCC-100  
 CUSTOMER FORT ENERGY CORPORATION  
 LOCATION 11-17-63-06 WSM CUST ORDER # 43874-13  
 QUOTATION 021-05-0298 MOELLER ORDER # 21-05-3123

Wiring: Class: 1 Type: B Coil volts: 120  
 Line volts: 480 Phase: 3 Wire: 3 Hertz: 60

**MOELLER**

MOTOR CONTROL CENTRE  
 MCC 3000

CALGARY BRANCH  
 Dwg # 3WD-463-21-05-3123-2

Unit No.	Qty	HP	FLA (avg)	Mog Power trip setting (A)	Power plug size (AWG)	Starter Type	Contactor DIL	Catalogue Number		Overload Relay	Pilot Devices		Control Transformer VA	Notes	Unit Wiring Diagram	Unit Height (mod)	Unit Layout Drawing No.
								Circuit Protective Device	Device		Pushbuttons or Selector Switch	Lights: R G Sp					
7	1	3	4.8	10	10	VFD		NZMH6-63/ZM6A-15-NA				50	0.5	SEE DRAWING FOR PARTS INFORMATION	21-05-3123-C	12	
8	1	30	40	480	6	VFD		NZMH6-100/ZM6A-70-NA				50	0.5	SEE DRAWING FOR PARTS INFORMATION	21-05-3123-G	12	
9	1	5	7.6	160	10	VFD		NZMH6-63/ZM6A-15-NA				50	0.5	SEE DRAWING FOR PARTS INFORMATION	21-05-3123-D	12	
10	1	5	7.6	160	10	VFD		NZMH6-63/ZM6A-15-NA				50	0.5	SEE DRAWING FOR PARTS INFORMATION	21-05-3123-D	12	
11	1	800	9600			BREAKER		NZM12-800/ZM12-800-NA				50	0.5	SEE DRAWING FOR PARTS INFORMATION	21-05-3123-L	12	
12	1	15	21	252	8	VFD		NZMH6-63/ZM6A-30-NA				50	0.5	SEE DRAWING FOR PARTS INFORMATION	21-05-3123-E	12	
13	1					SPACE									4		
14	1					DUAL BKR		2x NZMH6-63/ZM6A-30-NA				50	0.5	SEE DRAWING FOR PARTS INFORMATION	21-05-3123-L	4	
15	1	50	65	780	4	VFD		NZMH6-100/ZM6A-100-NA				50	0.5	SEE DRAWING FOR PARTS INFORMATION	21-05-3123-N	16	
16	1					SPACE									4		
17	1					DUAL BKR		2x NZMH6-63/ZM6A-30-NA				50	0.5	SEE DRAWING FOR PARTS INFORMATION	21-05-3123-L	4	
18	1	50	65	780	4	VFD		NZMH6-100/ZM6A-100-NA				50	0.5	SEE DRAWING FOR PARTS INFORMATION	21-05-3123-N	16	
19	1					SPACE									4		
20	1					DUAL BKR		2x NZMH6-63/ZM6A-30-NA				50	0.5	SEE DRAWING FOR PARTS INFORMATION	21-05-3123-L	4	
21	1	50	65	780	4	VFD		NZMH6-100/ZM6A-100-NA				50	0.5	SEE DRAWING FOR PARTS INFORMATION	21-05-3123-N	16	

Wiremarkers: Yes  No   
 Wiremarker Type: PVC  Heatshrink   
 Control Wire Size: 16AWG  14AWG   
 Tin Plated Control: Yes  No

1 Updated as Approved Description  
 Date: MAY 27 05 AH  
 Appr.

DRAWN: A. HUFALAR  
 DATE: MAY 09 05  
 APRR

Cust. order # 43874-13  
 MCC NOTES  
 CLEARWATER GAS PLANT  
 FORT ENERGY CORPORATION

Moeller order # 21-05-3123  
**MOELLER**  
 CALGARY BRANCH  
 Dwg # 3WD-463-21-05-3123-2A

Branch to fill in below:

Sect.	Structure Type	Horizontal Bus	Vertical Bus	Horizontal Gnd. Bus (NHG1-1/4x1/4)
J	MCBT-NF3-080X050	CB3-E3F-25TF+H25-F080X050		
K	NP3-050X050+VW	H25-65P050	NV04-65	50/65P050-B
L, M	NP3-050X050+PWT	H25-65P050	NV04-65	50/65P050-BT
N	NF3-100X050	H25-65F100		50/65F100-B

Unit Qty.	Drawer Type	Fixed Mounting Plate Type	Door Type	Hole Code	"pp" Code
22			NDP080-24+P		
23			NDP038-8+P		
24		FPP038-8W	NDP038-4+P		
25	DUR4		NDP038-4+P	200/201	
26	DUR4		NDP038-4+P	174/190	184
27	DUR4		NDP038-4+P	174/190	184
28	DUR4		NDP038-4+P	174/190	184
29	DUR4		NDP038-4+P	174/190	184
30		FPP050-3W/13W	NDP050-16+P		
31	DUR4		NDP038-4+P	200/201	
32		FPP050-3W/13W	NDP038-4+P		
33		FPP100-24W-SP	NDP050-16+P		
34			NDP100-24+P		

Busbars: Tin-plated Copper (Standard)

Main Bus: 800A  1200A  1600A  2000A  2500A  3000A

Vertical Bus: Std. 400A  600A  Ground Bus: 400A

Short Circuit Bracing: 50KA

Neutral Bus:

Incoming Entry: Top  Bottom  Incoming Section: J No./Phase: B

Outgoing Lines: Top  Bottom  Cable Size: 500MCM AI  Cu

Unit Mounting: Front Only

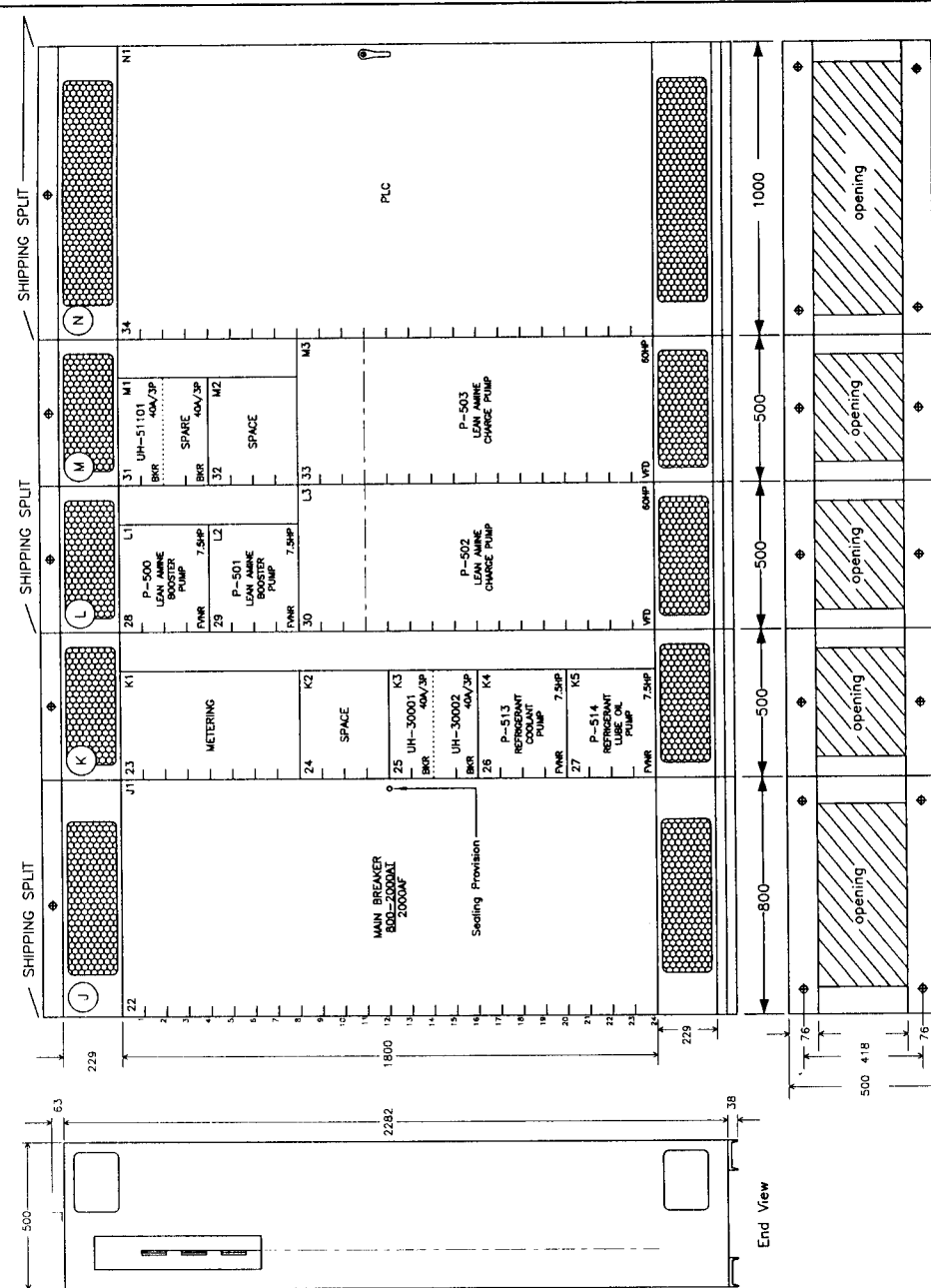
Enclosure Type: Eemac 1A

Back Access: Yes  No

Finish: Standard Grey

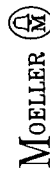
Notes - Factory Only:

- UNIT #22 DOOR c/w SEALING PROVISION
- CUT THE VERTICAL BUS IN SECTIONS 'L' & 'M' AT 10 MOD. & c/w AMB-500, IR-P050X050
- UNITS #30 & #33 DOOR c/w TOC #4035
- UNIT #34 DOOR c/w CAR-TYPE KEY-LOCK HANDLE



Notes: - PHASE IDENTIFICATION IS REQUIRED

PROJECT	CLEARWATER GAS PLANT MCC-100
CUSTOMER	FORT ENERGY CORPORATION
LOCATION	11-17-63-06 WSM
QUOTATION	Q21-05-0298
MOELLER ORDER #	21-05-3123
Wiring: Class:	1
Type:	B
Coil volts:	120
Wire:	3
Phase:	3
Hertz:	60
DATE	MAY 06 05
APPROVED	A. HUFALAR
CHECKED	
DESCRIPTION	MOTOR CONTROL CENTRE
DATE	MAY 27 05
APPROVED	



MOELLER  
MOTOR CONTROL CENTRE  
MCC 3000

3WD-463-21-05-3123-3

CALGARY BRANCH

Unit No.	Qty.	HP	FLA	Mag. trip setting (A)	Wire size (awg)	Power plug size (MPA)	Starter Type	Catalogue Number		Pilot Devices		Control Transformer VA	Notes	Unit Wiring Diagram	Unit Height (mod)	Unit Drawing No.
								Contactor DIL	Circuit Protective Device	Overload Relay	Pushbuttons or Selector Switch					
22	1	2000	24000				MAIN BKR	ABB E3S-A20-LSI				75	SEE DRAWING FOR PARTS INFORMATION	24	21-05-3123-A	
23	1						METERING						SEE DRAWING FOR PARTS INFORMATION	8	21-05-3123-A	
24	1						SPACE							4		
25	1	40/40	480/480	2x6			DUAL BKR	2x NZMH6-63/ZM6A-40-NA						4	21-05-3123-L	
26	1	7.5	11	132	10		FVNR	NZMH4-18-200-0BI	Z00-16	1	1	50	2x STV2/10, 1x EMT6	4	21-05-3123-B	
27	1	7.5	11	132	10		FVNR	NZMH4-18-200-0BI	Z00-16	1	1	50	2x STV2/10, 1x EMT6	4	21-05-3123-B	
28	1	7.5	11	132	10		FVNR	NZMH4-18-200-0BI	Z00-16	1	1	50	2x STV2/10, 1x EMT6	4	21-05-3123-B	
29	1	7.5	11	132	10		FVNR	NZMH4-18-200-0BI	Z00-16	1	1	50	2x STV2/10, 1x EMT6	4	21-05-3123-B	
30	1	60	77	924	4		VFD	NZMH6-100/ZM6A-100-NA				50	SEE DRAWING FOR PARTS INFORMATION	16	21-05-3123-H	
31	1	40/40	480/480	2x6			DUAL BKR	2x NZMH6-63/ZM6A-40-NA						4	21-05-3123-L	
32	1						SPACE							4		
33	1	60	77	924	4		VFD	NZMH6-100/ZM6A-100-NA				50	SEE DRAWING FOR PARTS INFORMATION	16	21-05-3123-H	
34	1						PLC							24		

Wiremarkers: Yes  No   
 Wiremarker Type: PVC  Heatshrink   
 Control Wire Size: 16AWG  14AWG   
 Tin Plated Control: Yes  No

Rev. 1 Description: UPDATED AS APPROVED Date: MAY 27 05 AH Appr. *[Signature]*

DRAWN: A. HUFALAR DATE: MAY 09 05 APPR. *[Signature]*

Cust. order # 43874-13  
 MCC NOTES: CLEARWATER GAS PLANT FORT ENERGY CORPORATION

Moeller order # 21-05-3123  
**MOELLER** CALGARY BRANCH  
 Dwg # 3WD-463-21-05-3123-3A

Branch to fill in below:

Sect.:	Structure Type:	Horizontal Bus	Vertical Bus	Horizontal End Bus (NHG1-1/4x1/4)
0	NP3-050X050+PWT	H25-65PV050	NV04-65	50/65P050-BT
TS	TS-P3-010X050+NM	TC25-05D/068S		+ HG1-1/4x1/4

Unit Qty.	Drawer Type	Fixed Mounting Plate Type	Door Type	Hole Code	"PP" Code
35	1		NDP038-4+P		
36	1	DUR4	NDP038-4+P	174/190	184
37	1	DUR4	NDP038-4+P	174/190	184
38	1	FPP050-3W/9W	NDP050-12+P		

Busbars: Tin-plated Copper (Standard)

Main Bus: 800A  1200A  1600A  2000A  2500A  3000A

Vertical Bus: Std. 400A  600A  Ground Bus: 400A

Short Circuit Bracing: 65kA

Neutral Bus:

Incoming Entry: Top  Bottom  Incoming Section: J No./Phase: 8

Outgoing Lines: Top  Bottom  Cable Size: 500MCM Al  Cu

Unit Mounting: Front Only

Enclosure Type: Eemac TA

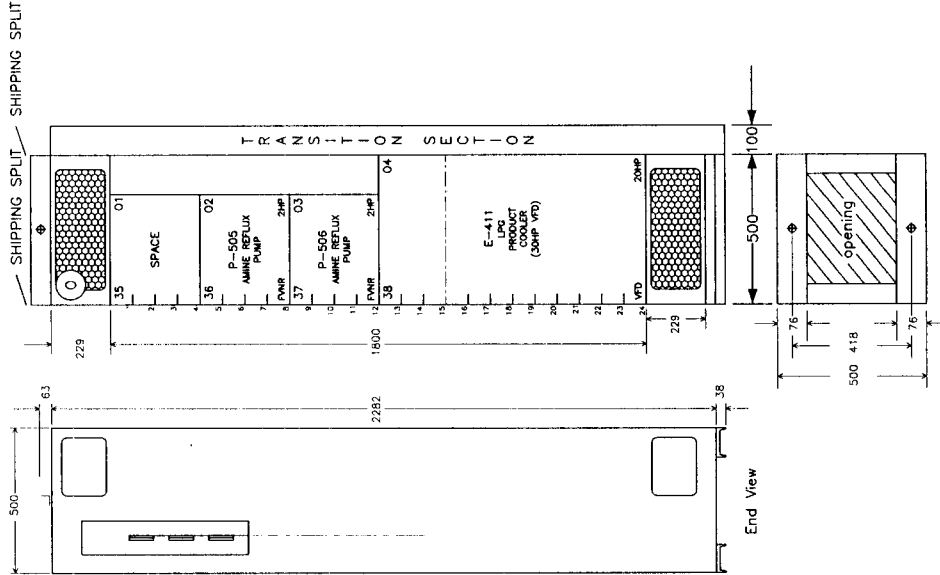
Back Access: Yes  No

Finish: Standard Grey

Notes - Factory Only:

- CUT THE VERTICAL BUS IN SECTION 'O' AT 14 MOD. & c/w AMB-500, TR-P050X050

- UNIT #38 12MOD DOOR c/w TOC #4035



Notes: - PHASE IDENTIFICATION IS REQUIRED

PROJECT CLEARWATER GAS PLANT MCC-100  
 CUSTOMER FORT ENERGY CORPORATION  
 LOCATION 11-17-63-06 WSM CUST ORDER # 43874-13  
 QUOTATION Q21-05-0298 MOELLER ORDER # 21-05-3123

Wiring: Class: 1 Type: B Coil volts: 120  
 Line volts: 480 Phase: 3 Wire: 3 Hertz: 60

Rev. 1  
 DRAWN A. HUFALAR  
 DATE MAY 06 05  
 Description: UPDATED AS APPROVED  
 Description: MOTOR CONTROL CENTRE  
 Description: MCC 3000



Dwg # 3WD-463-21-05-3123-4  
 CALGARY BRANCH

Unit No.	Qty.	HP	FLA	Mag trip wire setting (A)	wire plug size (awg)	MPA	Starter Type	Contactor DIL	Catalogue Number		Pilot Devices		Control Transformer VA	Notes	Unit Height (mod)	Unit Wiring Diagram	Unit Layout Drawing No.
									Circuit Protective Device	Overload Relay	Pushbutton Selector Switch	Lights R G SP					
35	1						SPACE								4		
36	1	2	3.4	40.8	10		FVR	0M/22	NZMH4-10-50-OBI	Z00-4		1 1	50	2x STV2/10, 1x EMT6	4	21-05-3123-B	
37	1	2	3.4	40.8	10		FVR	0M/22	NZMH4-10-50-OBI	Z00-4		1 1	50	2x STV2/10, 1x EMT6	4	21-05-3123-B	
38	1	20	27	324	8		VFD		NZMH6-63/ZM6A-50-NA				50	SEE DRAWING FOR PARTS INFORMATION	12	21-05-3123-F	

Wiremarkers: Yes  No   
 Wiremarker Type: PVC  Heatshrink   
 Control Wire Size: 16AWG  14AWG   
 Tin Plated Control: Yes  No

1 Updated AS APPROVED Description Date Appr.  
 MAY 27 05 AH

DRAWN A. HUFALAR DATE MAY 09 05  
 APPR.

Cust. order # 43874-13  
 MCC NOTES  
 CLEARWATER GAS PLANT  
 FORT ENERGY CORPORATION

Moeller order # 21-05-3123  
**MOELLER**  
 Dwg # 3WD-463-21-05-3123-4A



Branch to fill in below:

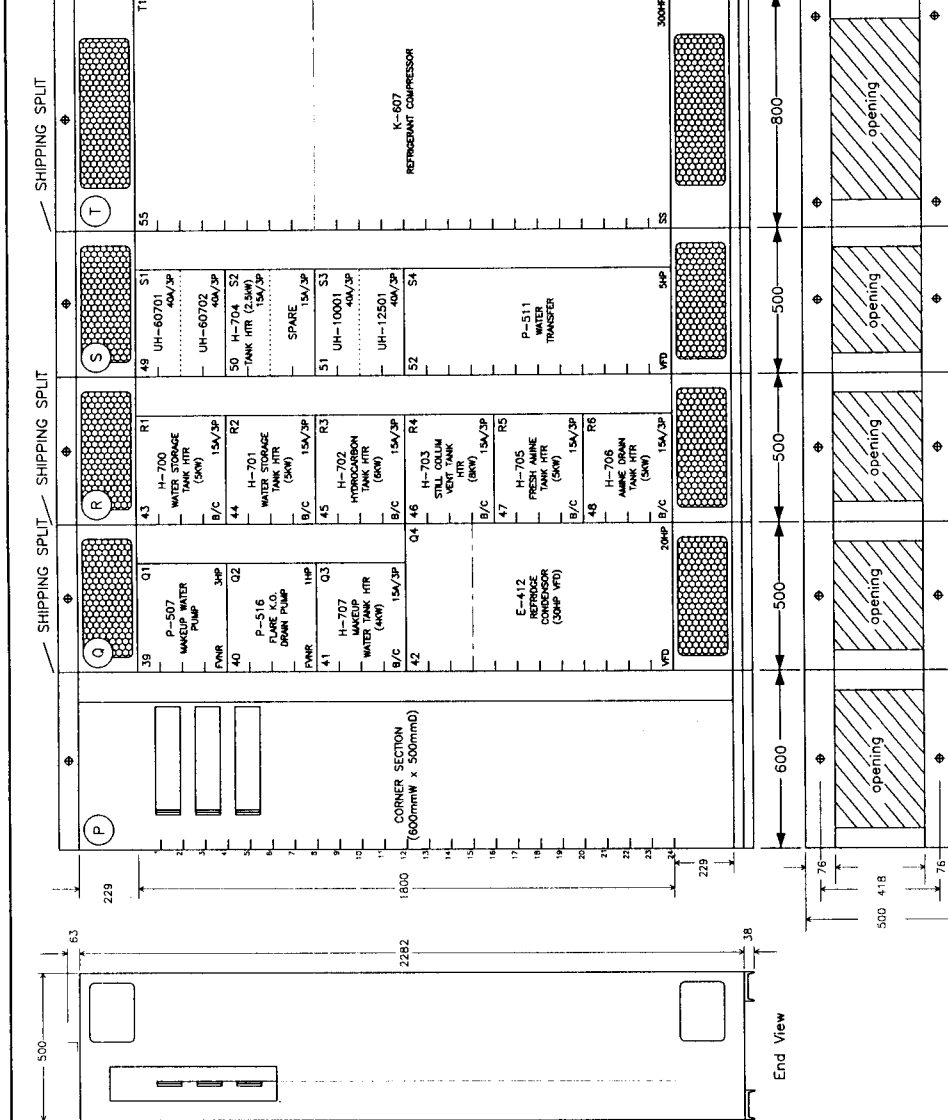
Structure Type	Horizontal Bus	Vertical Bus	Horizontal Gnd. Bus (NHG1-1/4x1/4)
P	TOC #...		
Q	NP3-050X050+PWT	H25-6SPV050	NV04-65
R	NP3-050X050+VW	H25-6SPV050	NV04-65
T	NP3-080X050	H25-65F080	50/65F080-B

Unit Qty.	Drawer Type	Fixed Mounting Plate Type	Door Type	Hole Code	"ppr" Code
39	DUR4		NDP038-4+P	174/190	184
40	DUR4		NDP038-4+P	174/190	184
41	DUR4		NDP038-4+P	174	184
42	DUR4	FPP0503W/9W	NDP050-12+P		
43	DUR4		NDP038-4+P	174	184
44	DUR4		NDP038-4+P	174	184
45	DUR4		NDP038-4+P	174	184
46	DUR4		NDP038-4+P	174	184
47	DUR4		NDP038-4+P	174	184
48	DUR4		NDP038-4+P	174	184
50	DUR4		NDP038-4+P	200/201	
51	DUR4		NDP038-4+P	200/201	
52	DUR12		NDP038-12+P	174	
55		FPF080-8W-SP/16W	NDF080-24+P		

Busbars: Tin-plated Copper (Standard)  
 Main Bus: 800A  1200A  1600A  2000A  2500A  3000A   
 Vertical Bus: Std. 400A  600A  Ground Bus: 400A  
 Short Circuit Bracing: 65kA  
 Incoming Entry: Top  Bottom  Incoming Section: J No./Phase: B  
 Outgoing Lines: Top  Bottom  Cable Size: 500MCM AI  Cu   
 Unit Mounting: Front Only  
 Enclosure Type: Eemac 1A  
 Back Access: Yes  No   
 Finish: Standard Grey  
 Notes - Factory Only:  
 - CUT THE VERTICAL BUS IN SECTION 'Q' AT 14 MOD. & c/w AMB-500. TR-P050X050  
 - UNIT #42 12MOD DOOR c/w TOC #4035

Notes:  
 - PHASE IDENTIFICATION IS REQUIRED

PROJECT CLEARWATER GAS PLANT MCC-100  
 CUSTOMER FORT ENERGY CORPORATION  
 LOCATION 11-17-63-06 WSM CUST ORDER # 43874-13  
 QUOTATION Q21-05-0298 MOELLER ORDER # 21-05-3123  
 Wiring: Class: 1 Type: B Coil volts: 120 Hertz: 60  
 Line volts: 480 Phase: 3 Wire: 3



Rev.	Description	Checked	Approved	Date
1	UPDATED AS APPROVED			MAY 27 05
		A. HUFALAR		

MOTOR CONTROL CENTRE  
 MCC 3000  
 Dwg # 3WD-463-21-05-3123-5

**MOELLER**  
 CALGARY BRANCH  
 3WD-463-21-05-3123-5

Unit No.	Qty	HP	FLA	Mag trip wire plug size (awg) MPA	Starter Type	Catalogue Number		Pilot Devices		Control Transformer VA Amps	Notes	Unit Wiring Diagram	Unit Height (mod)	Unit Layout Drawing No.		
						Contactor DIL	Circuit Protective Device	Overload Relay	Pushbuttons or Selector Switch						Lights R G SP	
39	1	3	4.8	57.6	10	FVNR	OM/22	NZMH4-12-80-OBI	Z00-6	1 1 1	50	0.5	2x STV2/10, 1x EMT6	21-05-3123-B	4	21-05-3123-B
40	1	1	1.8	21.6	10	FVNR	OM/22	NZMH4-6-6-32-OBI	Z00-2,4	1 1 1	50	0.5	2x STV2/10, 1x EMT6	21-05-3123-B	4	21-05-3123-B
41	1	1	15	180	10	BC	OM/22	NZMH6-63/ZM6A-15-NA		1 1 1	50	0.5	2x STV2/10	21-05-3123-M	4	21-05-3123-M
42	1	20	27	324	8	VFD		NZMH6-63/ZM6A-50-NA			50	0.5	SEE DRAWING FOR PARTS INFORMATION	21-05-3123-F	12	21-05-3123-F
43	1	15	180	10	10	BC	OM/22	NZMH6-63/ZM6A-15-NA		1 1 1	50	0.5	2x STV2/10	21-05-3123-M	4	21-05-3123-M
44	1	15	180	10	10	BC	OM/22	NZMH6-63/ZM6A-15-NA		1 1 1	50	0.5	2x STV2/10	21-05-3123-M	4	21-05-3123-M
45	1	15	180	10	10	BC	OM/22	NZMH6-63/ZM6A-15-NA		1 1 1	50	0.5	2x STV2/10	21-05-3123-M	4	21-05-3123-M
46	1	15	180	10	10	BC	OM/22	NZMH6-63/ZM6A-15-NA		1 1 1	50	0.5	2x STV2/10	21-05-3123-M	4	21-05-3123-M
47	1	15	180	10	10	BC	OM/22	NZMH6-63/ZM6A-15-NA		1 1 1	50	0.5	2x STV2/10	21-05-3123-M	4	21-05-3123-M
48	1	15	180	10	10	BC	OM/22	NZMH6-63/ZM6A-15-NA		1 1 1	50	0.5	2x STV2/10	21-05-3123-M	4	21-05-3123-M
49	1	40/40	480/480			DUAL BKR		2x NZMH6-63/ZM6A-40-NA							4	21-05-3123-L
50	1	15/15	180/180			DUAL BKR		2x NZMH6-63/ZM6A-15-NA							4	21-05-3123-L
51	1	40/40	480/480			DUAL BKR		2x NZMH6-63/ZM6A-40-NA							4	21-05-3123-L
52	1	5	7.6	160	10	VFD		NZMH6-63/ZM6A-15-NA		1 1 1	50	0.5	SEE DRAWING FOR PARTS INFORMATION	21-05-3123-D	12	21-05-3123-D
55	1	300	361	4.332		SOFT START	6x 2AM/22	NZM10-400N/ZM-400-OBI		1 1 1	750	8	SEE DRAWING FOR PARTS INFORMATION	21-05-3123-I	24	21-05-3123-I

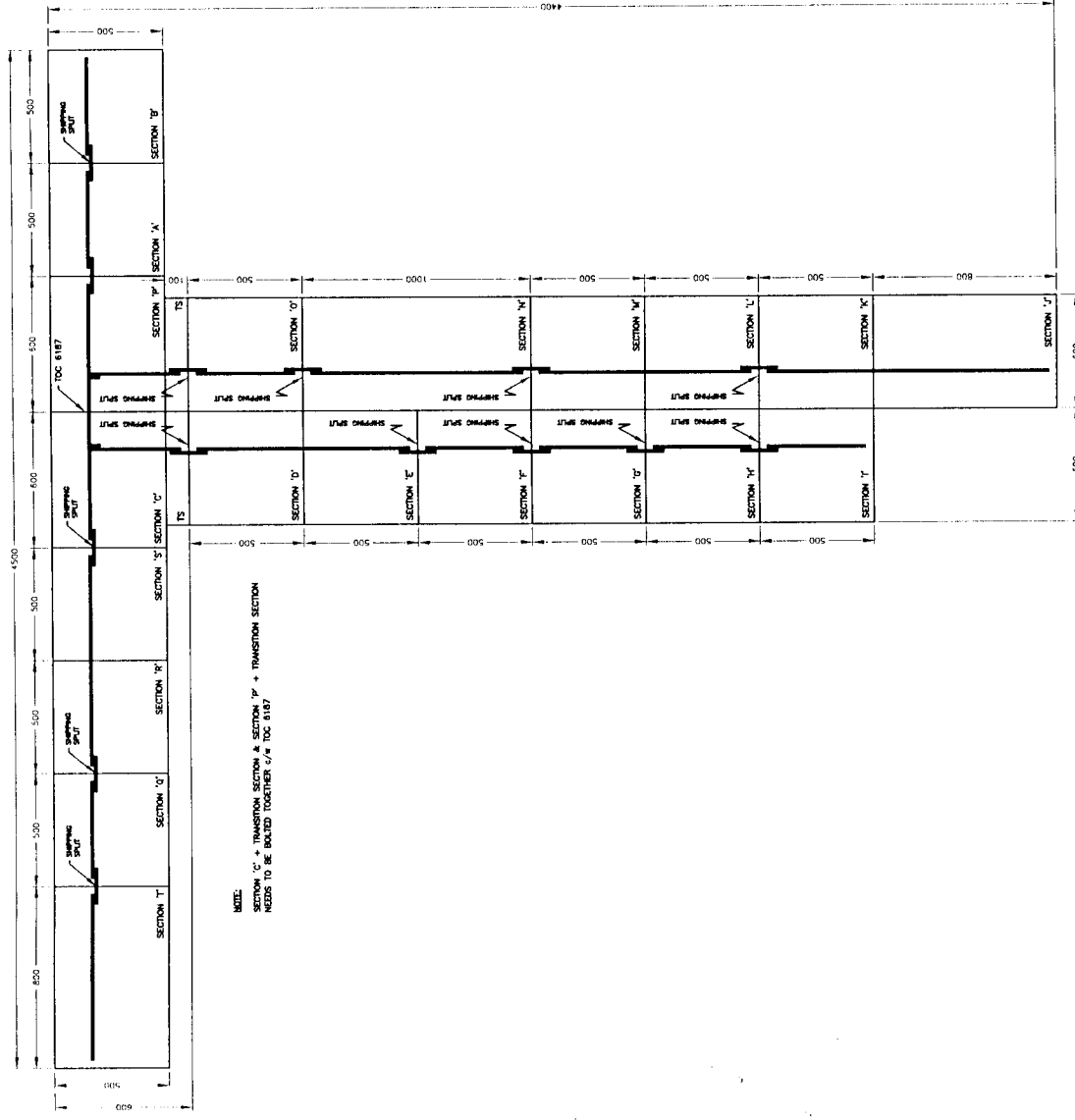
Wiremarkers: Yes  No   
 Wiremarker Type: PVC  Heatshrink   
 Control Wire Size: 16AWG  14AWG   
 Tin Plated Control: Yes  No

Description: UPDATED AS APPROVED  
 Date: MAY 27 05 AH  
 Appr. [Signature]

DRAWN: A. HUFALAR  
 DATE: MAY 09 05  
 APPR: [Signature]

Cust. order # 43874-13  
 MCC NOTES  
 CLEARWATER GAS PLANT  
 FORT ENERGY CORPORATION

Moeller order # 21-05-3123  
**MOELLER**  
 CALGARY BRANCH  
 Dwg # 3WD-463-21-05-3123-5A



LEGEND:  
 SOLID LINE - CUBICLE/PANEL WIRING  
 DASHDOT LINE - INTERCUBICLE WIRING  
 DASH LINE - FIELD WIRING  
 SW - BLACK  
 RT - RED  
 BL - BLUE  
 YE - YELLOW  
 GR - GREEN  
 WH - WHITE

Moeller Order # 21-05-3123	Cust. order # 43874-13		DRAWN	A. HUFALAR	MCC-100 TOP VIEW	Moeller	CALGARY BRANCH
			DATE	MAY 08 05	CLEARWATER GAS PLANT		
			DATE	MAY 27 05	FORT ENERGY CORPORATION		
			Appr.				
			Rev.				
			Date				
			Description				
			2	JUN 20 05	UPDATE AS PER TOC #6178		
			1	MAY 27 05	UPDATED AS PER TOC #6178		

Moeller Order # 21-05-3123

**MOELLER**

Dwg # 3WD-463-21-05-3123-6

Branch to fill in below:

Sect.	Structure Type:	Horizontal Bus	Vertical Bus	Horizontal Gnd. Bus (NHG1-1/4x1/4)
A	NF3-080X050	H25-65F080		50/65F080-B
B	NF3-100X050	H25-65F100		50/65F100-B
C, D	NP3-075X050	H25-65P075		50/65P075-BT

Unit	Qty.	Drawer Type	Fixed Mounting Plate Type	Door Type	Hole Code	"PP" Code
	1	1	FPF080-8W-SP/16W	NDF080-24+P		
	2	1	FPF100-24W-SP	NDF100-24+P		
	3	1	FPP075-14W-SP	NDP075-14+P		
	4	1	FPP075-3W	NDP075-10+P		
	5	1	FPP075-14W-SP	NDP075-14+P		
	6	1	FPP075-3W	NDP075-10+P		

Busbars: Tin-plated Copper (Standard)

Main Bus: 800A  1200A  1600A  2000A  2500A  3000A

Vertical Bus: Std. 400A  600A  Ground Bus: 400A

Neutral Bus:

Short Circuit Bracing: 65kA

Incoming Entry: Top  Bottom  Incoming Section: A No./Phase: 4

Outgoing Lines: Top  Bottom  Cable Size: 500MCM Al  Cu

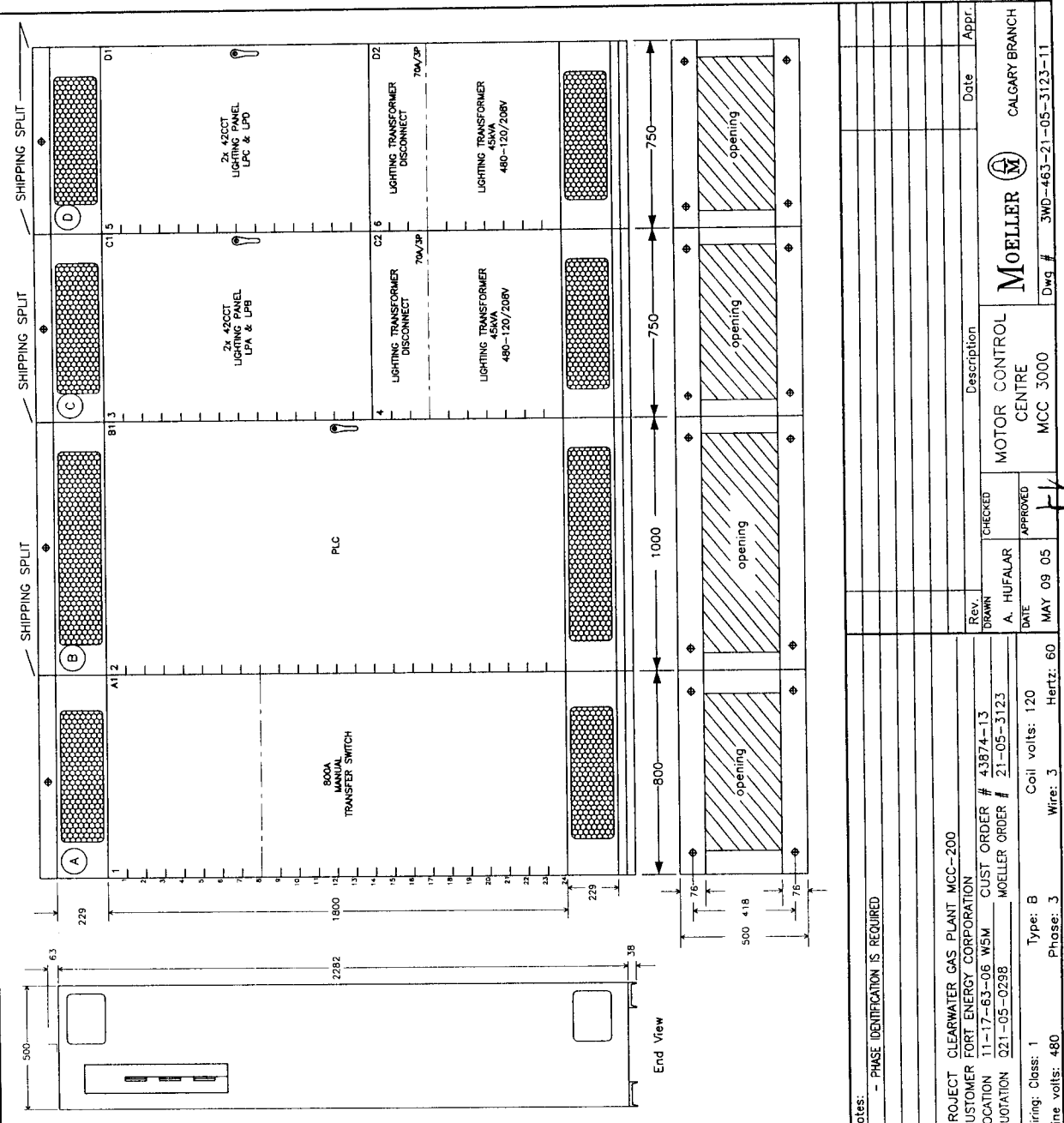
Unit Mounting: Front Only  Enclosure Type: Eemac 1A

Finish: Standard Grey  Back Access: Yes  No

Notes - Factory Only:

- UNITS #2, #3 & #5 DOOR c/w CAR-TYPE KEY-LOCK HANDLE

- SECTIONS 'c' & 'd' c/w TR-P075X050 & TOC #3465



Notes: - PHASE IDENTIFICATION IS REQUIRED

PROJECT CLEARWATER GAS PLANT MCC-200  
 CUSTOMER FORT ENERGY CORPORATION  
 LOCATION 11-17-63-06 WSM CUST ORDER # 43874-13  
 QUOTATION 021-05-0298 MOELLER ORDER # 21-05-3123

Wiring: Class: 1 Type: B Coil volts: 120  
 Line volts: 480 Phase: 3 Wire: 3 Hertz: 60

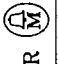
Rev. Description Date Appr.  
 DRAWN A. HUFALAR  
 CHECKED  
 APPROVED

MOTOR CONTROL CENTRE  
 MCC 3000

MOELLER CALGARY BRANCH  
 Dwg # 3WD-463-21-05-3123-11

Unit No.	Qty.	HP	FLA	Mag trip setting (A)	Power wire size (awg)	MVA	Starter Type	Contactor DIL	Catalogue Number	Circuit Protective Device	Overload Relay	Pilot Devices		Control Transformer	Notes	Unit Height (mod)	Unit Wiring Diagram	Unit Layout Drawing No.
												Pushbuttons or Selector Switch	Lights R/G/SP					
A1	1	800	9600				T-SWITCH		2x N12-800-CNA							24	21-05-3123-L	
B1	1						PLC									24		
C1	1			2x 42CCT												14	21-05-3123-K	
C2	1	70	840				XFMR/BKR		NZMH6-100/ZM6A-70-NA							10	21-05-3123-K	
D1	1			2x 42CCT												14	21-05-3123-J	
D2	1	70	840				XFMR/BKR		NZMH6-100/ZM6A-70-NA							10	21-05-3123-J	

Moeller order # 21-05-3123

**MOELLER**  CALGARY BRANCH

Dwg # 3WD-463-21-05-3123-11A

Cust. order # 43874-13

MCC NOTES  
CLEARWATER GAS PLANT  
FORT ENERGY CORPORATION

DRAWN BY: A. HUFALAR  
DATE: MAY 09 05

1 REV. DATE: AUG 08 05 CP  
Description: UPDATED AS BUILT

Appr.: [Signature]

Yes  No   
PVC  Heatshrink   
16AWG  14AWG   
Yes  No

Wiremarkers:  
Control Wire Size:  
Tin Plated Control:

Branch to fill in below:

Sect:	Structure Type:	Horizontal Bus	Vertical Bus	Horizontal Gnd. Bus (MHGT-1/4x1/4)
E, F	NP3-050X050+VM	H25-65PV050	NV04-65	50/65P050-B

Unit Qty.	Drawer Type	Fixed Mounting Plate Type	Door Type	Hole Code	"pp" Code
7	DUR4		NDP038-4+P	174/190	184
8	DUR4		NDP038-4+P	174/190	184
9	DUR4		NDP038-4+P	200/201	
10	DUR4		NDP038-4+P	200/201	
11			NDP038-4+P		
12			NDP038-4+P		
13	DUR4		NDP038-4+P	200/201	
14	DUR4		NDP038-4+P	200/201	
15	DUR4		NDP038-4+P	200	
16			NDP038-4+P		
17			NDP038-4+P		
18			NDP038-4+P		

Busbars: Tin-plated Copper (Standard)

Main Bus: 800A  1200A  1600A  2000A  2500A  3000A

Vertical Bus: Std. 400A  600A  Ground Bus: 400A

Neutral Bus:

Short Circuit Bracing: 65ka

Incoming Entry: Top  Bottom  Incoming Section: A No./Phase: 4

Outgoing Lines: Top  Bottom  Cable Size: 500MCM Al  Cu

Unit Mounting: Front Only  Enclosure Type: Earmac 1A

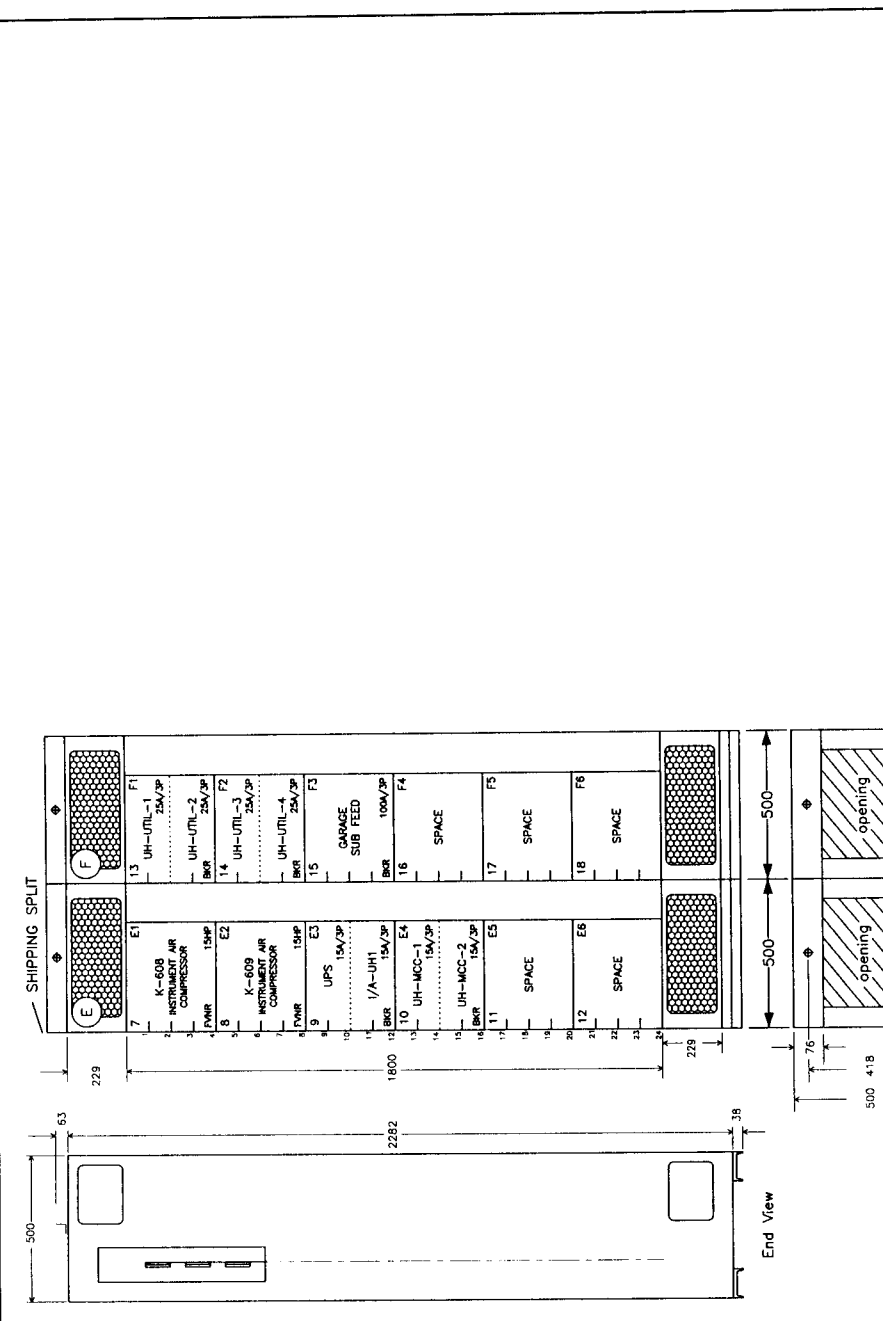
Finish: Standard Grey

Notes - Factory Only:

Notes: - PHASE IDENTIFICATION IS REQUIRED

PROJECT CLEARWATER GAS PLANT MCC-200  
 CUSTOMER FOR ENERGY CORPORATION  
 LOCATION 11-17-63-06 WSM CUST ORDER # 43874-13  
 QUOTATION Q21-05-0298 MOELLER ORDER # 21-0503123

Wiring: Class: 1 Type: B Coil volts: 120  
 Line volts: 480 Phase: 3 Wire: 3 Hertz: 60



Rev.	DESCRIPTION	DATE	APPROVED	CHECKED	DATE
1	UPDATED AS APPROVED	MAY 27 05			AH
1	MOTOR CONTROL CENTRE	MAY 09 05			Appr.

MOELLER MOTOR CONTROL CENTRE MCC 3000

Calgary Branch

Dwg # 3WD-463-21-05-3123-12

Unit No.	Qty	HP	FLA	Mag trip wire size (A)	Power plug size (amp)	MPA	Starter Type	Catalogue Number		Notes	Unit Height (mod)	Unit Wiring Diagram	Unit Layout Drawing No.
								Contactor	Circuit Protective Device				
								Pilot Devices		Control Transformer			
								Pushbuttons	Selector Switch		VA	Amps	
								Overload Relay	Lights				
								Relay	R	G	SP		
7	1	15	21	252	8	6	FVNR	1AM/22	NZM6B-63/ZM6-50-320-OBI	Z1-24	1	1	21-05-3123-B
8	1	15	21	252	8	6	FVNR	1AM/22	NZM6B-63/ZM6-50-320-OBI	Z1-24	1	1	21-05-3123-B
9	1		15/15	180/180	2x6		DUAL BKR		2x NZMH6-63/ZM6A-15-NA		4		21-05-3123-L
10	1		15/15	180/180	2x6		DUAL BKR		2x NZMH6-63/ZM6A-15-NA		4		21-05-3123-L
11	1						SPACE				4		
12	1						SPACE				4		
13	1		25/25	300/300	2x6		DUAL BKR		2x NZMH6-63/ZM6A-25-NA		4		21-05-3123-L
14	1		25/25	300/300	2x6		DUAL BKR		2x NZMH6-63/ZM6A-25-NA		4		21-05-3123-L
15	1		100	1200	4		BREAKER		NZMH6-100/ZM6A-100-NA		4		
16	1						SPACE				4		
17	1						SPACE				4		
18	1						SPACE				4		

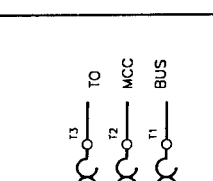
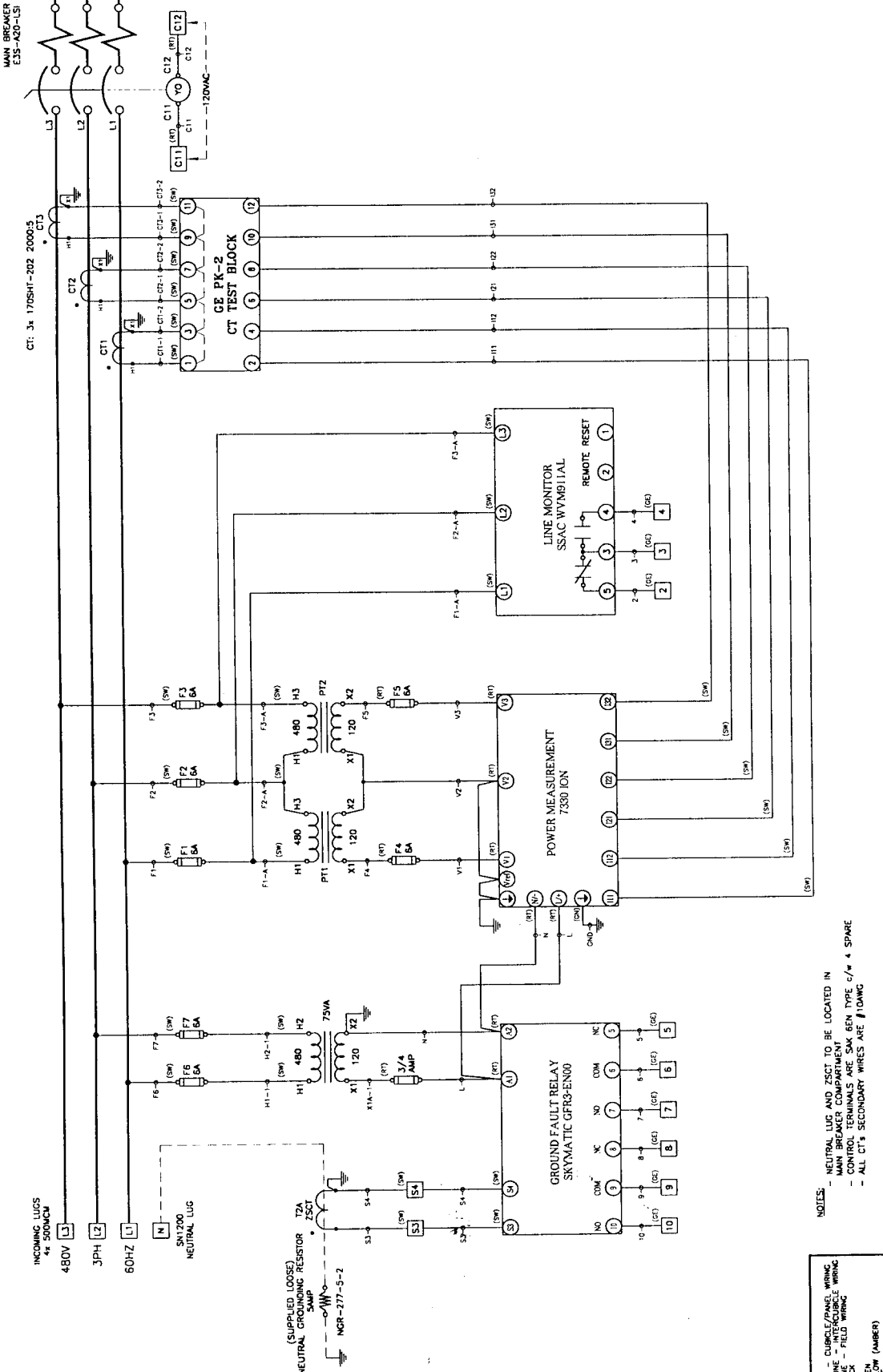
Wiremarkers: Yes  No   
 Wiremarker Type: PVC  Heatshrink   
 Control Wire Size: 16AWG  14AWG   
 Tin Plated Control: Yes  No

Rev. 1 Description: UPDATED AS APPROVED Date: MAY 27 05 AH Appr. *[Signature]*

DRAWN: A. HUFALAR DATE: MAY 09 05 APPR. *[Signature]*

Cust. order # 43874-13  
 MCC NOTES  
 CLEARWATER GAS PLANT  
 FORT ENERGY CORPORATION

Moeller order # 21-05-3123  
**MOELLER** CALGARY BRANCH  
 Dwg # 3WD-463-21-05-3123-12A



CT: 3x 170SHIT-202 2000-5

Moeller Order # 21-05-3123

**MOELLER**

Dwg # 3WD-463-21-05-3123-A

Rev.	Description	Date	Appr.	Rev.	Date	Appr.
2	UPDATED AS BUILT	AUG 08 05	CP	1	JUN 21 05	AH
1	UPDATED BREAKER					

Drawn	Cust. order #	Moeller Order #
A. HUFALAR	43874-13	21-05-3123

DATE	DESCRIPTION	BY	APPR.
MAY 09 05	MAIN BREAKER and METERING		
JUN 21 05	CLEARWATER GAS PLANT		
	FORT ENERGY CORPORATION		

DESCRIPTION: MAIN BREAKER and METERING

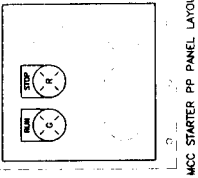
PROJECT: CLEARWATER GAS PLANT

REVISED: 21-05-3123-A

LEGEND:  
 - CIRCLES/PANEL WIRING  
 - DASHED LINE - FIELD WIRING  
 - SOLID LINE - CURCULE/PANEL WIRING  
 - DOTTED LINE - FIELD WIRING  
 - RED - RED  
 - GREEN - GREEN  
 - BLUE - BLUE  
 - WHITE - WHITE

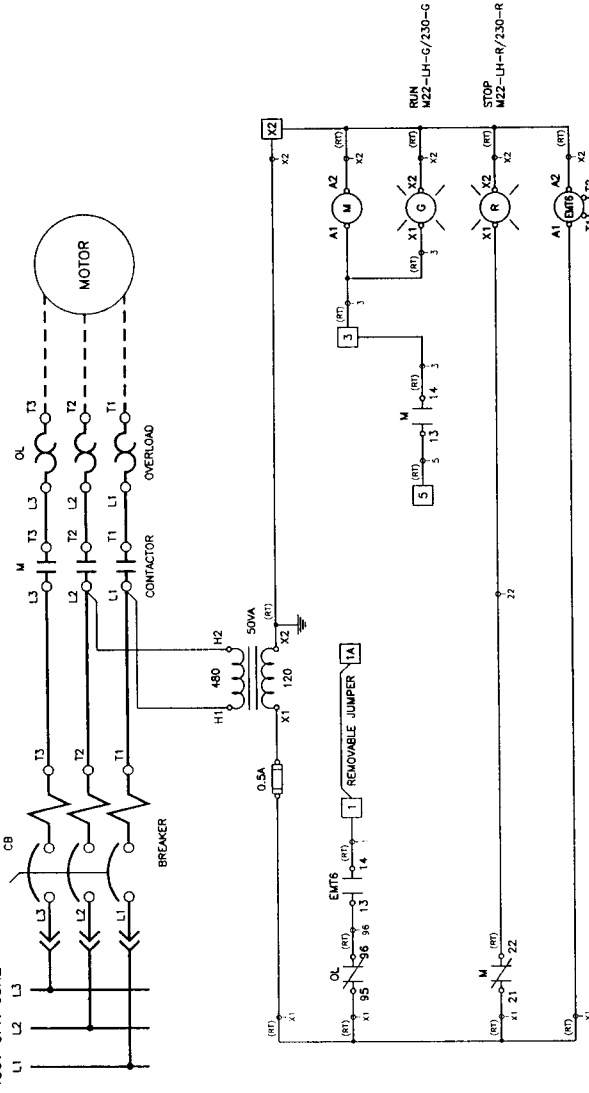
NOTES:  
 - NEUTRAL LUG AND ZSCT TO BE LOCATED IN MAIN BREAKER COMPARTMENT  
 - CONTROL WIRING SHALL BE TYPE #14 4 SPARE  
 - ALL CT'S SECONDARY WIRES ARE #10AWG



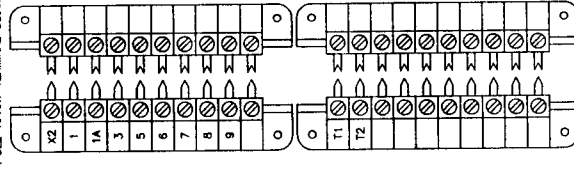


MCC STARTER PP PANEL LAYOUT

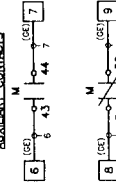
480V 3PH 60HZ



1-STV2/10  
PULL-APART TERMINAL BLOCK



AUXILIARY CONTACTS



\*\*\*\*\*  
NOTE: AP -STV2 PLATES NEEDS TO BE LOOSE IN VERTICAL WIREWAY  
\*\*\*\*\*

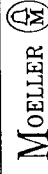
Rev. Description Date Appr. Rev. Description Date Appr.

Rev.	Description	Date	Appr.	Rev.	Description	Date	Appr.

LEGEND:

- SOLID LINE - CABLE/PANEL WIRING
- DOTTED LINE - WIRE WIRING
- DASHED LINE - FIELD WIRING
- SW - BLACK
- SE - GREEN
- SE - RED
- SE - BLUE
- SW - YELLOW (AMBER)
- WS - WHITE

Moeller Order # 21-05-3123



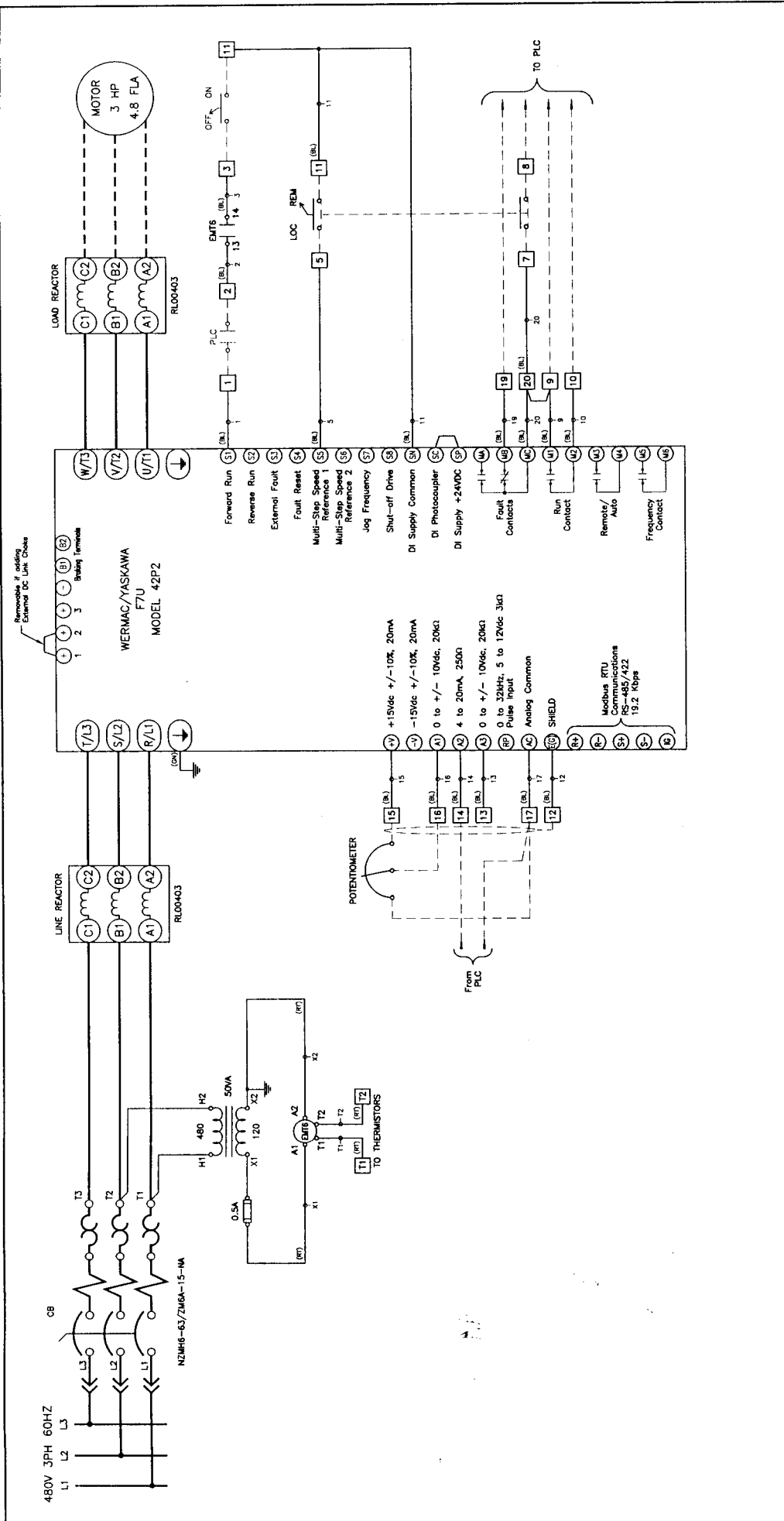
CALGARY BRANCH

Dwg # 3WD-463-21-05-3123-B

Moeller Order # 43874-13  
Typical size 1 - 2 FVR COMBINATION STARTER  
CLEARWATER GAS PLANT  
FORT ENERGY CORPORATION

DRAWN A. HUFALAR  
DATE MAY 09 05  
APPR

Cust. order # 43874-13  
TYPICAL SIZE 1 - 2 FVR COMBINATION STARTER  
CLEARWATER GAS PLANT  
FORT ENERGY CORPORATION



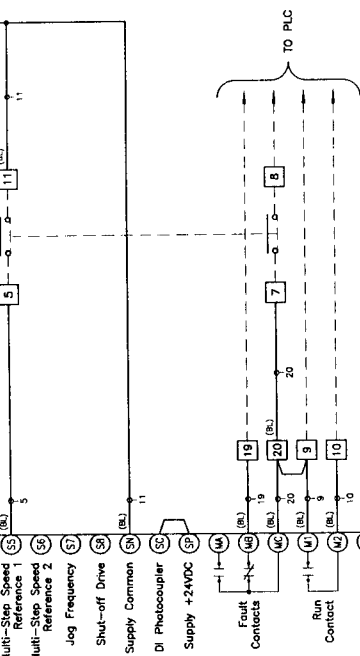
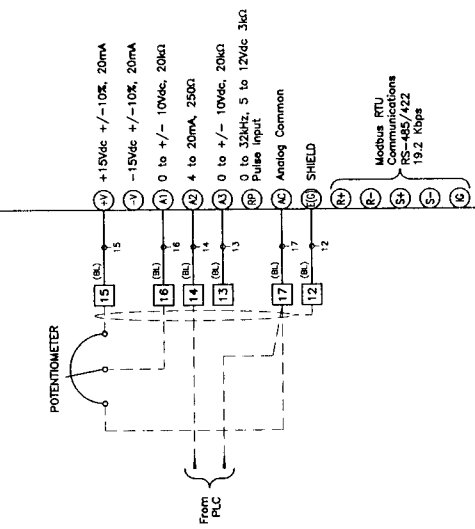
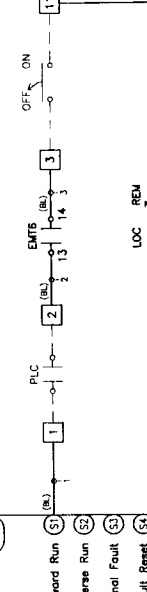
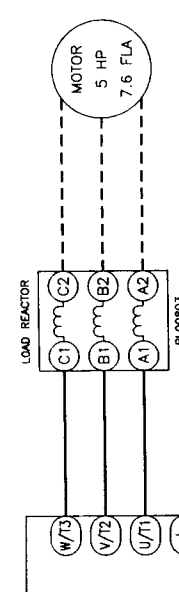
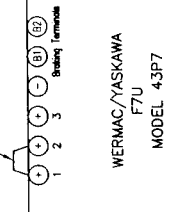
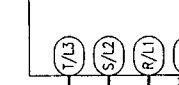
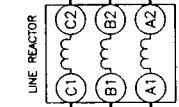
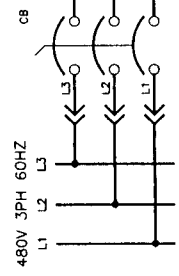
\*\*\*\*\* NOTE: AP-S1V2 PLATES NEEDS TO BE LOOSE IN VERTICAL WIREWAY \*\*\*\*\*

LEGEND:  
 SOLID LINE - CONTROL / FIELD WIRING  
 DASHED LINE - INTERCHANGEABLE WIRING  
 DOTTED LINE - FIELD WIRING  
 RT - RED  
 GN - GREEN  
 BL - BLUE  
 W - WHITE

Rev.	Description	Date	Rev.	Date	Description
1	UPDATED AS APPROVED, CHANGED TO 3HP	MAY 27 05	AH	APR 05	APPROVED

Modular Order # 21-05-3123  
**MOELLER** CALGARY BRANCH  
 Dwg # 3WD-463-21-05-3123-C

DRAWN BY A. HUFALAR  
 CUST. ORDER # 43874-13  
 DATE MAY 09 05  
 3HP VARIABLE FREQUENCY DRIVE  
 CLEARWATER GAS PLANT  
 FORT ENERGY CORPORATION



LEGEND:  
SOLID LINE - CUBICLE/PANEL WIRING  
DASHDOT LINE - INTERCUBICLE WIRING  
DOTTED LINE - FIELD WIRING  
SW - BLACK  
CM - GREEN  
CE - YELLOW (AMBER)  
WS - WHITE

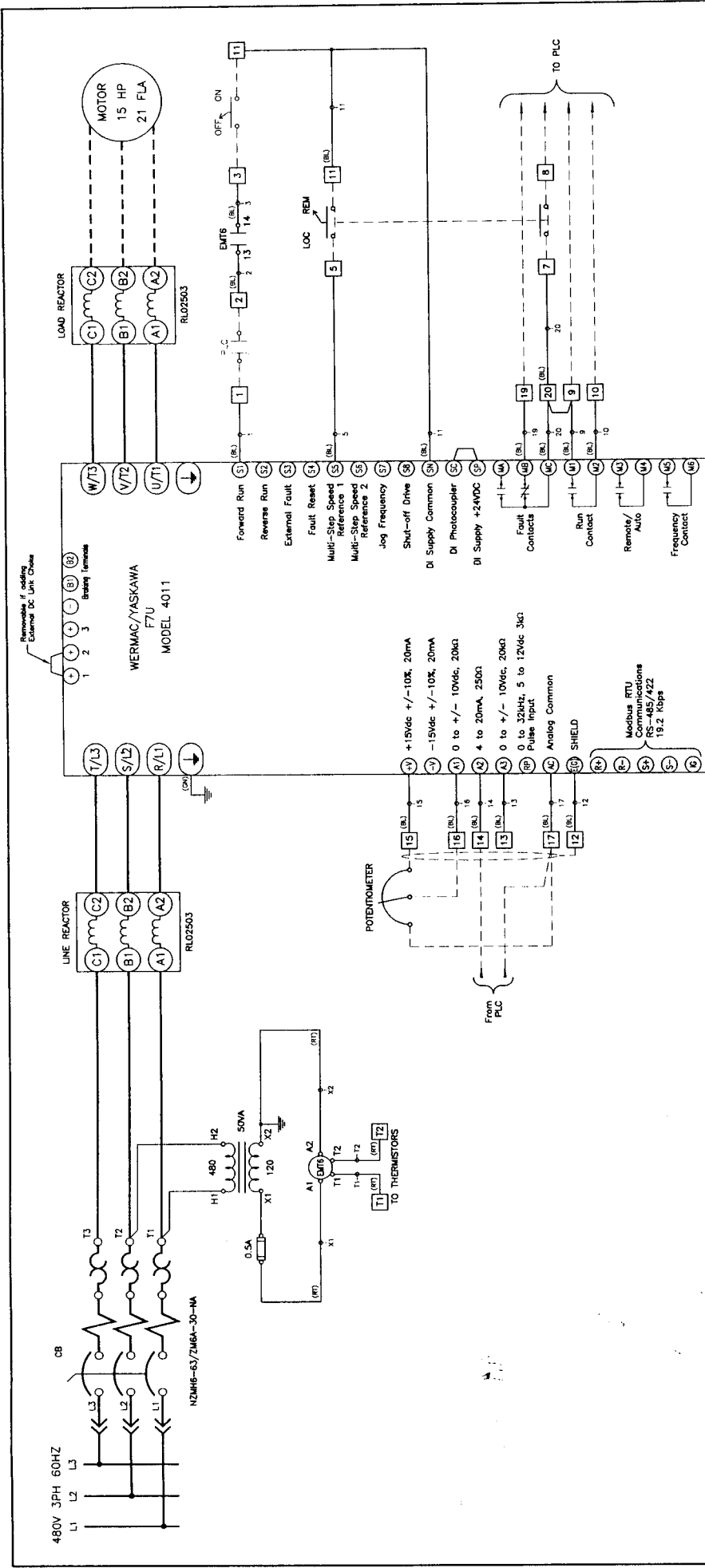
\*\*\*\*\*  
• NOTE: AP...STVZ PLATES NEEDS TO BE LOOSE IN VERTICAL WIREWAY \*\*\*\*\*

Rev	Description	Date	Appr.	Rev.	Description	Date	Appr.

DRAWN A. HUFALAR  
DATE MAY 09 05  
APPR. *[Signature]*

Cust. order # 43874-13  
SHP VARIABLE FREQUENCY DRIVE  
CLEARWATER GAS PLANT  
FORT ENERGY CORPORATION

Moeller Order # 21-05-3123  
**MOELLER** CALGARY BRANCH  
Dwg # 3WD-463-21-05-3123-D

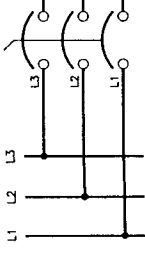


\* NOTE: AP...STVZ PLATES NEEDS TO BE LOOSE IN VERTICAL WIREWAY \*

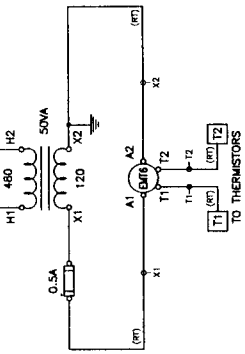
LEGEND:  
 SOLID LINE - CURBICLE/PANEL WIRING  
 DASHED LINE - RACEWAY WIRING  
 DOTTED LINE - FIELD WIRING  
 SW - BLACK  
 E - GREEN  
 W/S - YELLOW (NUMBER)  
 W/S - WHITE

Moeller Order # 21-05-3123		Cust. order # 43874-13		DRAWN A. HUFALAR DATE MAY 09 05 APPR <input checked="" type="checkbox"/>	15HP VARIABLE FREQUENCY DRIVE CLEARWATER GAS PLANT FORT ENERGY CORPORATION		Moeller Order # 21-05-3123	CALGARY BRANCH
Rev.	Description	Date	Appr.	Rev.	Date	Description	Dwg # 3WD-463-21-05-3123-E	

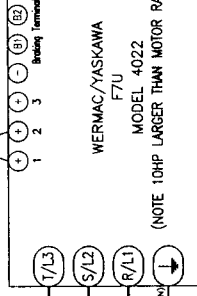
480V 3PH 60HZ



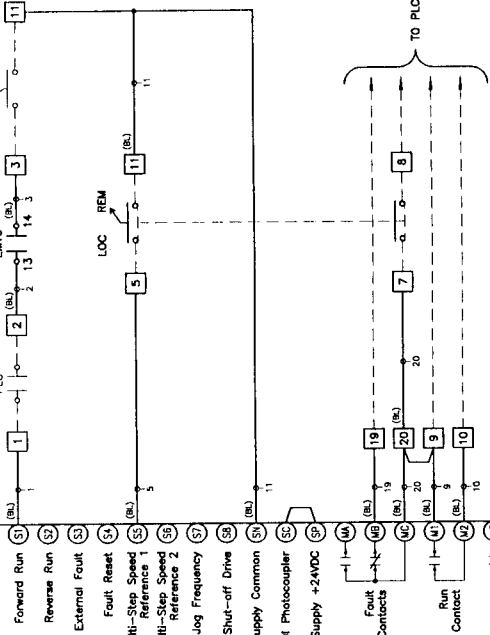
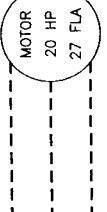
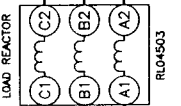
NZMH6-63/ZM6A-50-NA



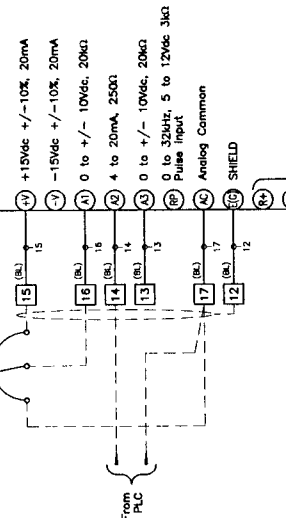
Remotely Located External DC Line Drive



(NOTE 10HP LARGER THAN MOTOR RATED HP)



POTENTIOMETER



LEGEND:  
 DASHED LINE - CIRCULAR/PANEL WIRING  
 DASHED LINE - INTERCIRCLE WIRING  
 SW - SWITCH  
 RT - RED  
 BK - BLACK  
 Y - YELLOW  
 W - WHITE  
 BL - BLUE

\*\*\*\*\* NOTE: STRIP/IO FULL APART CONTROL TERMINALS \*\*\*\*\*

Rev.	Description	Date	Appr.	Rev.	Date	Description
1	UPDATED AS APPROVED. CHANGED TO 20HP	MAY 27 05	AH			

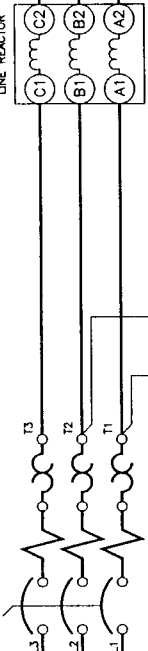
  

DRWN	A. HUFALAR	Cust. order #	43874-13
DATE	MAY 08 05	20HP VARIABLE FREQUENCY DRIVE	
APPR		CLEARWATER GAS PLANT	
		FORT ENERGY CORPORATION	

Moeller Order #	21-05-3123
Moeller	CALCARY BRANCH
Dwg #	3WD-463-21-05-3123-F

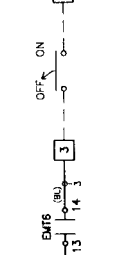
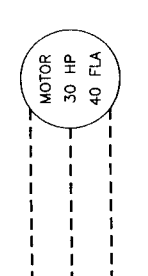
480V 3PH 60HZ  
L1 L2 L3



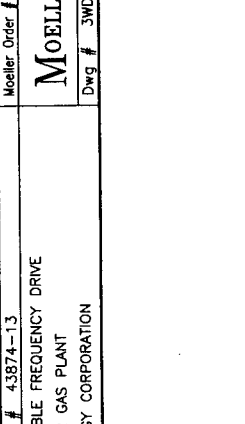
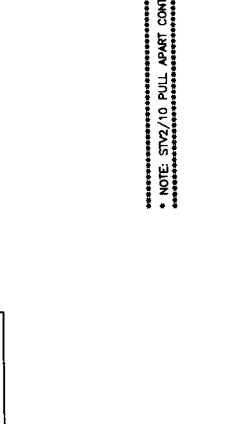
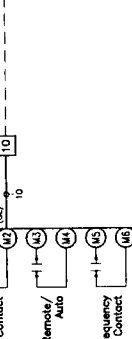
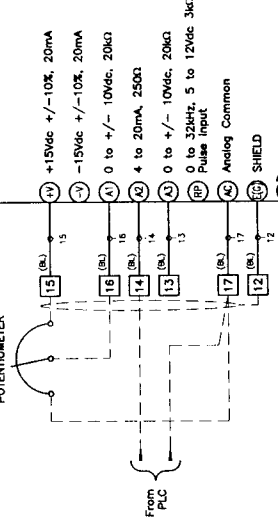
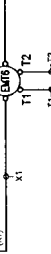
LINE REACTOR  
C1 B1 A1 C2 B2 A2  
RL05503

WERNAC/YASKAWA  
F7U  
MODEL 4030  
**(NOTE 10HP LARGER THAN MOTOR RATED HP)**

LOAD REACTOR  
C1 B1 A1 C2 B2 A2  
RL05503



TO THERMISTORS



LEGEND - CIRCLES/PANEL WIRING  
 DASHED LINE - INTERLOCK WIRING  
 SCHEDULED LINE - FIELD WIRING  
 - BLACK - INTERLOCK  
 - RED  
 - BLUE  
 - GREEN  
 - YELLOW (AMBER)  
 - WHITE

\*\*\*\*\* NOTE: STR2/10 PULL APART CONTROL TERMINALS \*\*\*\*\*

Rev.	Description	Date	Appr.	Rev.	Date	Description	Date	Appr.
1	UPDATED AS APPROVED, CHANGED TO 30HP	MAY 27 05	AH					

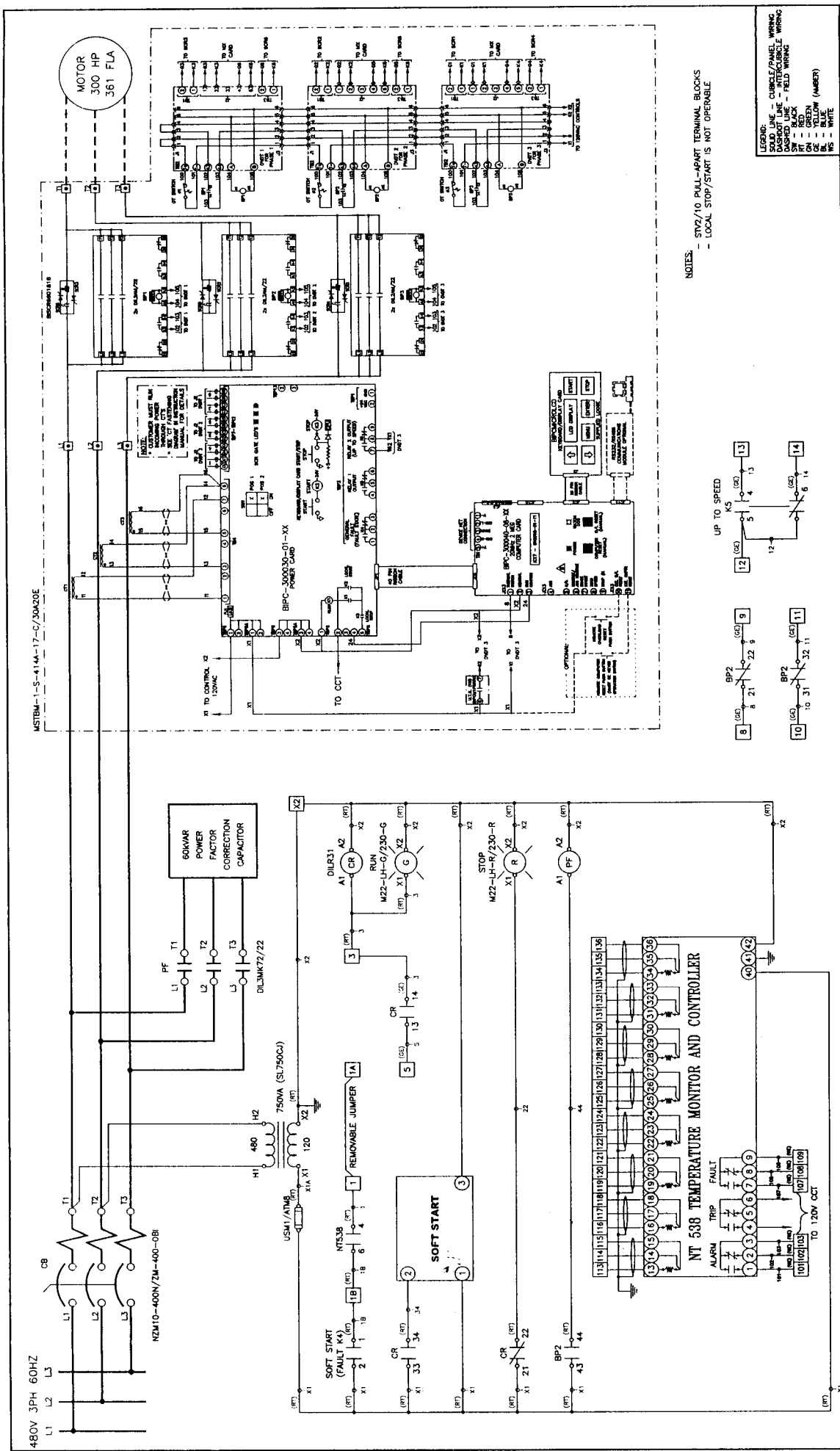
  

DRAWN	A. HUFALAR	Cust. order #	43874-13
DATE	MAY 09 05	30HP VARIABLE FREQUENCY DRIVE	
APP'R		CLEARWATER GAS PLANT	
Rev.	1	FORT ENERGY CORPORATION	

Moeller Order #	21-05-3123	Moeller Order #	21-05-3123
<b>MOELLER</b>		CALGARY BRANCH	
Dwg #		JWD-463-21-05-3123-G	



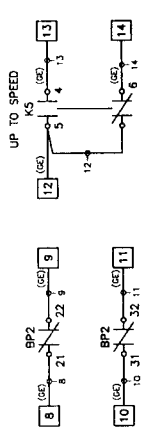


MSTBM-1-S-414A-17-C/30A00E

MOTOR  
300 HP  
361 FLA

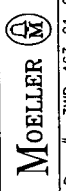
NOTES:  
- STV2/10 PULL-APART TERMINAL BLOCKS  
- LOCAL STOP/START IS NOT OPERABLE

LEGEND:  
SOLID LINE - CABLE/PANEL WIRING  
DASHED LINE - INTERCABLE WIRING  
RT - RED  
RY - YELLOW  
BY - BLUE  
W - WHITE



Rev.	Description	Date	Appr.	Rev.	Date	Appr.	Description

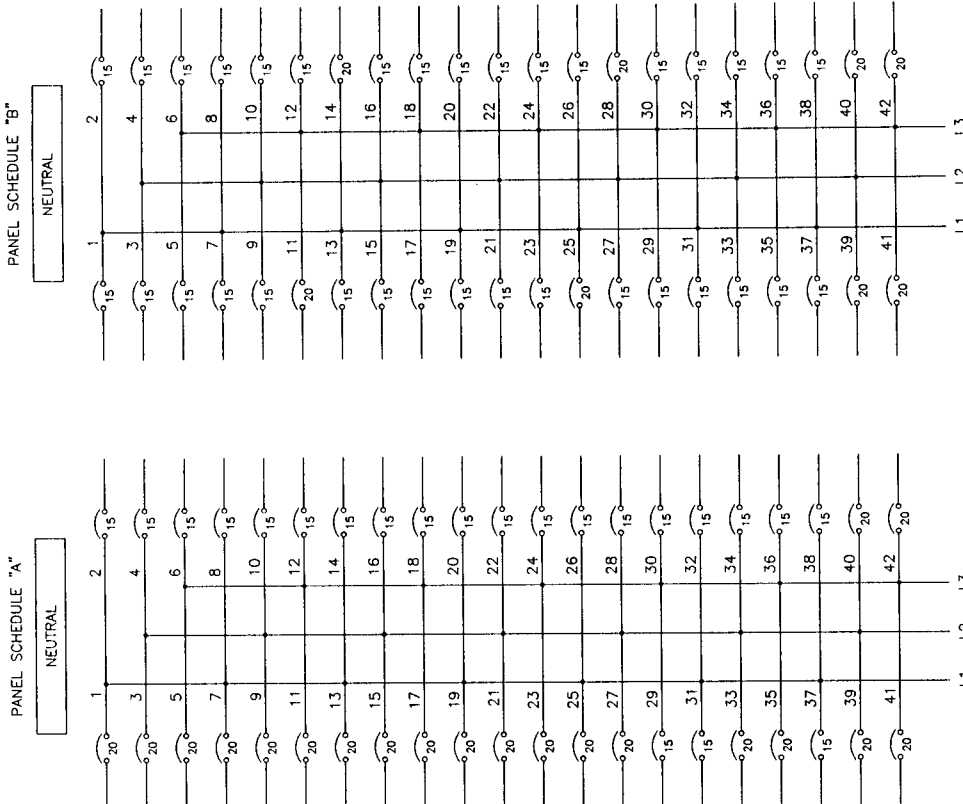
Moeller Order # 21-05-3123  
Cust. order # 43874-13  
300HP SOFT START  
CLEARWATER GAS PLANT  
FORT ENERGY CORPORATION



Moeller Order # 21-05-3123  
Cust. order # 43874-13  
300HP SOFT START  
CLEARWATER GAS PLANT  
FORT ENERGY CORPORATION

DRAWN  
A. HUFALAR  
DATE  
MAY 09 05  
APPR.





PANEL SCHEDULE "A" NEUTRAL

PANEL SCHEDULE "B" NEUTRAL

480V 3PH 60HZ

MARCUS 45 KVA 480V-120/208V

UNIT: 4 CUBICLE: C2

UNIT: 3 CUBICLE: C1

TO MCC GROUND BUS

- PANEL "A" PARTS:**
- 1 - P1A4A242J (PANEL)
  - 1 - TOC #5942-2 (TRIM)
  - 22 - BAB1015 (15A 1P)
  - 20 - BAB1020 (20A 1P)
  - 4 - C04-380 (GROUND LUGS)
- PANEL "B" PARTS:**
- 1 - P1A4A242J (PANEL)
  - 34 - BAB1015 (15A 1P)
  - 8 - BAB1020 (20A 1P)
  - 4 - C04-380 (GROUND LUGS)

NOTE: ONE COPPER GROUND WIRE #5 AWG IS CONNECTED FROM LIGHTING PANEL TO MCC GROUND BUS



Rev.	Description	Date	Appr.	Rev.	Date	Appr.
1	UPDATED IS APPROVED PANEL SCHEDULE MATCH WITH BR DWG	MAY 27 05 AH				

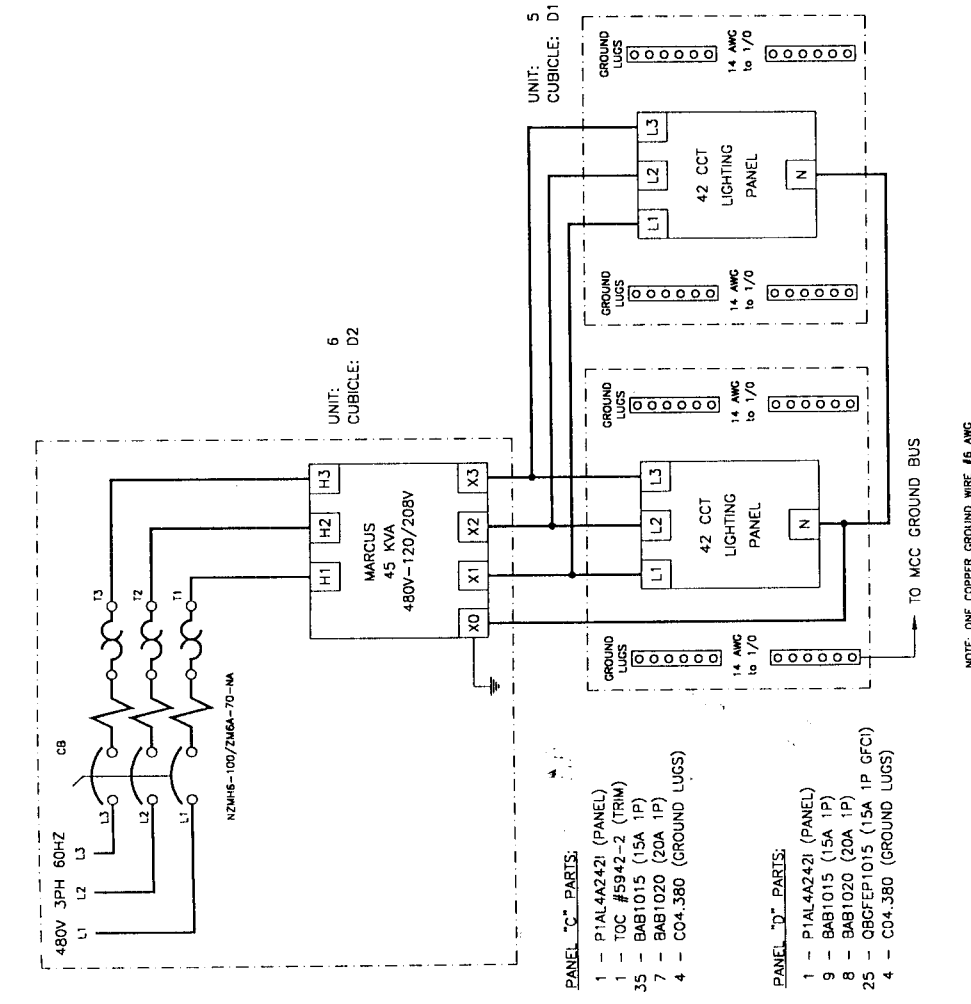
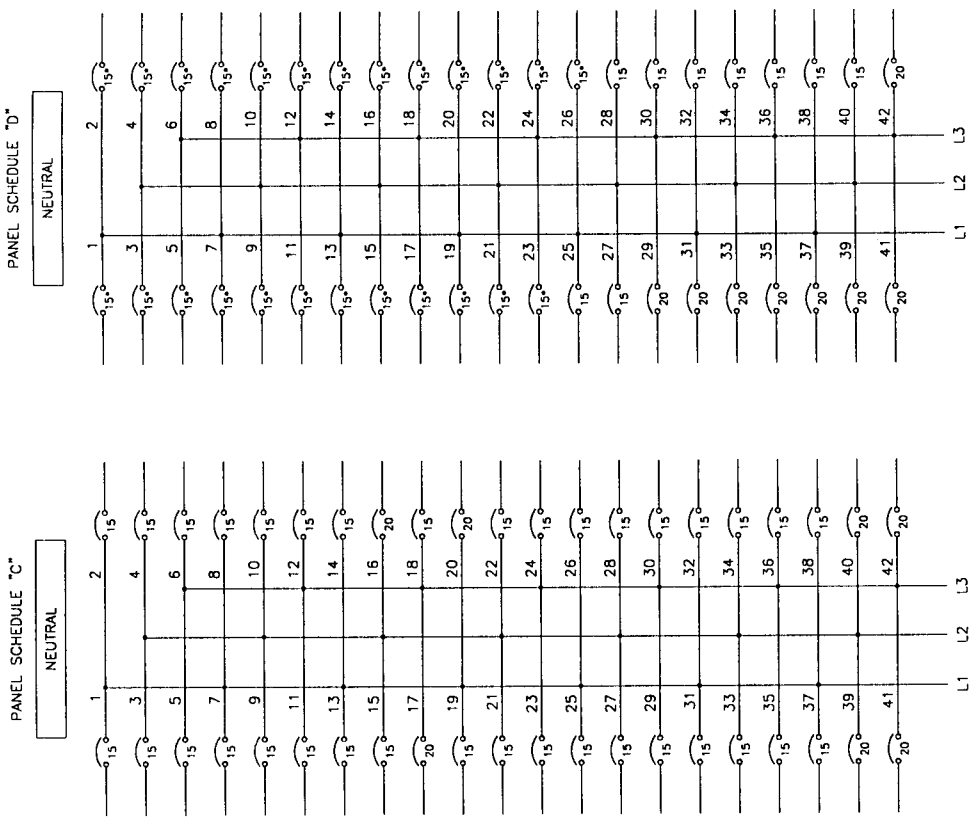
Drawn	A. HUEFALAR	Date	DATE	APPR.	Date	Appr.

Drawn	Cust. order #	43874-13

Drawn	DATE	APPR.	Date	Appr.

Drawn	DATE	APPR.	Date	Appr.

Drawn	DATE	APPR.	Date	Appr.



- PANEL "C" PARTS:**
- 1 - P1AL4A2421 (PANEL)
  - 1 - TOC #5942-2 (TRIM)
  - 35 - BAB1015 (15A 1P)
  - 7 - BAB1020 (20A 1P)
  - 4 - C04.380 (GROUND LUGS)
- PANEL "D" PARTS:**
- 1 - P1AL4A2421 (PANEL)
  - 9 - BAB1015 (15A 1P)
  - 8 - BAB1020 (20A 1P)
  - 25 - QBCFE1015 (15A 1P GFCI)
  - 4 - C04.380 (GROUND LUGS)

NOTE: ONE COPPER GROUND WIRE #6 AWG IS CONNECTED FROM LIGHTING PANEL TO MCC GROUND BUS

**LEGEND:**

- SOLID LINE - CIRCLES/PANEL WIRING
- DASHED LINE - FIELD WIRING
- SW - BLACK
- TR - GREEN
- BL - BLUE
- NS - (NUMBER)
- WS - WHITE

XX\* - GFCI BREAKER FOR HEAT TRACE TRIP RATED @ 30mA

Rev.	Description	Date	Appr.	Rev.	Date	Appr.
2	SWITCH LOCATION OF GFI BREAKERS @ PANEL "D"	08 05 CP		1	08 05 CP	
1	UPDATED AS APPROVED. PANEL SCHEDULE MATCH WITH BOR DMC.	MAY 30 05 AH				

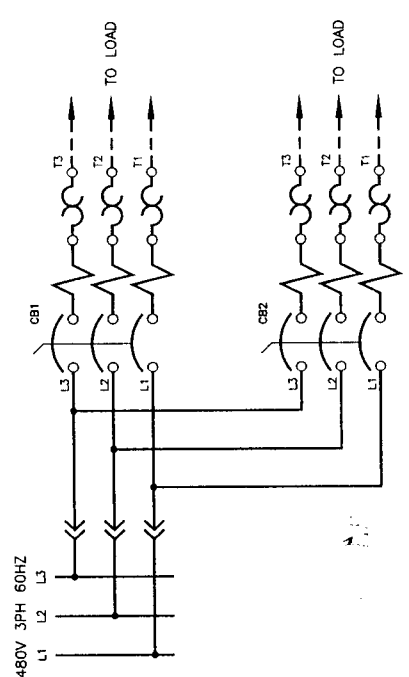
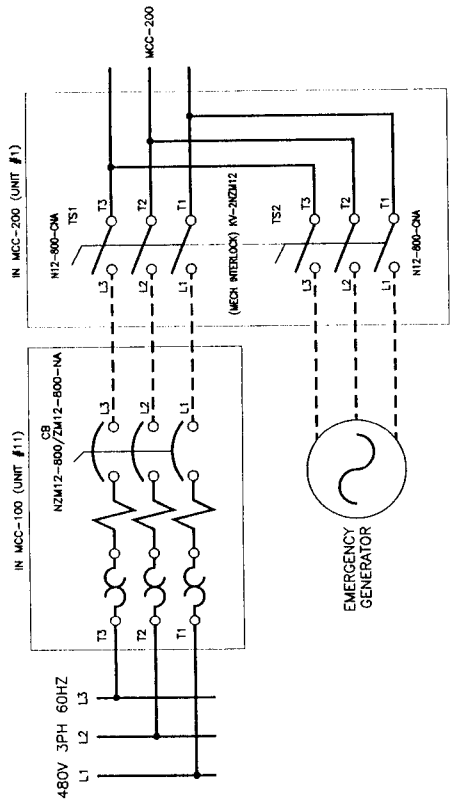
DRAWN	A. HUFALAR	DATE	MAY 09 05
APPLY			

Cust. order #	43874-13
2x 42CCT LIGHTING DISTRIBUTION	
CLEARWATER GAS PLANT	
FORT ENERGY CORPORATION	

KM order #	21-05-3123
MOELLER	CALGARY BRANCH
Dwg #	3WD-463-21-05-3123-K



TYPICAL DUAL BREAKER

1. LEGEND  
 CURVE - CURBULE/FANGL WRING  
 DASHDOT LINE - INTERCUBELLE WRING  
 DASH LINE - FIELD WRING  
 S.W. - BLACK  
 RT - RED  
 BT - BLUE  
 Y - YELLOW (AMBER)  
 BK - BLACK  
 WH - WHITE

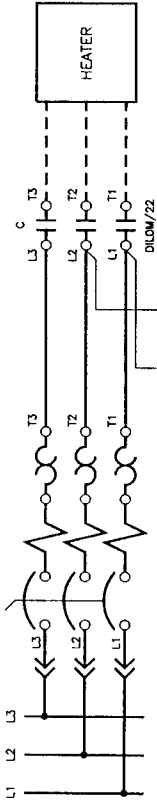
Rev.	Description	Date	Appr.	Rev.	Date	Appr.	Description

DRAWN BY: A. HUFALAR  
 DATE: MAY 09 05  
 APPR: [Signature]

Cust. order # 43874-13  
 MANUAL TRANSFER SWITCH & DUAL BREAKER  
 CLEARWATER GAS PLANT  
 FORT ENERGY CORPORATION

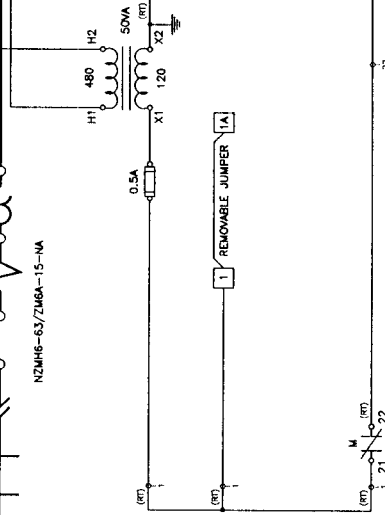
Moeller Order # 21-05-3123  
**MOELLER**  
 CALGARY BRANCH  
 Dwg # 3WD-463-21-05-3123-L

480V 3PH 60HZ  
L1 L2 L3



NZMH6-63/7MEA-15-NA

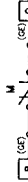
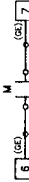
D10M/22



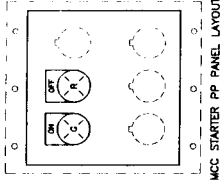
ON M22-LH-G/230-G

OFF M22-LH-R/230-R

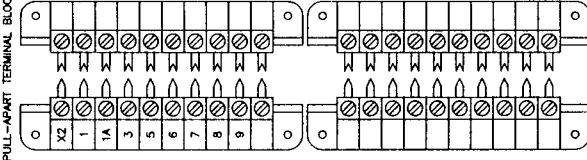
AUXILIARY CONTACTS



LEGEND:  
 DASH-dot LINE - CIRCULAR/PIPING WIRING  
 DASH-dot-dot LINE - INTERLOCK WIRING  
 SCHEDULE MARKING - FIELD WIRING  
 RT - RED  
 BK - BLACK  
 GR - GREEN  
 BK - BLUE (AMBER)  
 PS - WHITE



1x5TY2/10  
PULL-APART TERMINAL BLOCK



\*\*\*\*\* NOTE: AP-5TY2 PLATES NEEDS TO BE LOOSE IN VERTICAL WIREWAY \*\*\*\*\*

			Moeller Order # 21-05-3123
DRAWN A. HUFALAR		Cust. order # 43874-13	Moeller Order # 21-05-3123
DATE MAY 09 05		TYPICAL SIZE 1 BREAKER CONTACTOR	CALGARY BRANCH
APPR.		CLEARWATER GAS PLANT	Dwg # 3WD-463-21-05-2123-M
Date		FORT ENERGY CORPORATION	
Rev.	Description	Date	Appr.   Rev.   Date



<b>Customer :</b> FORT ENERGY CORPORATION,	2128870	<b>Customer Order :</b> 21-05-3123
<b>Catalogue # :</b> 20 SECTION MCC3000 MOTOR CONTROL CENTRE		<b>Line No :</b> 1
<b>Project / Tag :</b> CLEARWATER GAS PLANT		<b>Order Date :</b> 5/4/2005
<b>Order Specs :</b> DELIVERY: JUNE 20, 2004		<b>Customer PO :</b> 43874-13
TAG: CLEARWATER GAS PLANT		<b>Order Qty :</b> 1

ATTN.: BLAINE OWEN  
 RPO #: 43874-13 REV. 0  
 AFE #:  
 ACCT CODE: 9360 364  
 LSD: 11-17-63-06-W5M

DRAWINGS FOR INFORMATION ONLY  
 EMAIL TO BLAINE OWEN @ BDR  
 blaineo@bdreng.com

FAX PACKING SLIP AND BOL TO 270-2685

BUILT AS PER QUOTATION #Q21-05-0298

480V 3PH 60HZ - 2500A COPPER BUS BARS  
 65KA

Piece	PO / Bin Location	Qty Req	Qty Rec	Article	Catalogue #
<b>Assembly</b>					
<b>Steel</b>					
10	G21-05-3123-100/1	1	1	802300	MCC 3000-NA STEEL SECTION SECTION 'A' SPLIT #1
20	G21-05-3123-100/2	1	1	802300	MCC 3000-NA STEEL SECTION SECTION 'B' SPLIT #2
30	G21-05-3123-100/3	1	1	802305	MCC 3000-NA (TOC) STEEL SECTION TS+SECTION 'C'+TS+SECTION 'P' <i>Needs to be bolted together c/w TOC #6187</i> SPLIT #3
40	G21-05-3123-100/4	1	1	802300	MCC 3000-NA STEEL SECTION SECTION'S 'D' & 'E' SPLIT #4
50	G21-05-3123-100/5	1	1	802300	MCC 3000-NA STEEL SECTION SECTION 'F' SPLIT #5
60	G21-05-3123-100/6	1	1	802300	MCC 3000-NA STEEL SECTION SECTION 'G' SPLIT #6
70	G21-05-3123-100/7	1	1	802300	MCC 3000-NA STEEL SECTION SECTION 'H' SPLIT #7
80	G21-05-3123-100/8	1	1	802300	MCC 3000-NA STEEL SECTION SECTION 'I' SPLIT #8
90	G21-05-3123-100/9	1	1	802300	MCC 3000-NA STEEL SECTION SECTION'S 'J' & 'K' SPLIT #9
0	G21-05-3123-100/10	1	1	802300	MCC 3000-NA STEEL SECTION SECTION'S 'L' & 'M' SPLIT #10

### Steel ... continued

110	G21-05-3123-100/11	1	1	802300	MCC 3000-NA STEEL SECTION SECTION 'N' SPLIT #11
J	G21-05-3123-100/12	1	1	802300	MCC 3000-NA STEEL SECTION SECTION 'O' SPLIT #12
130	G21-05-3123-100/13	1	1	802300	MCC 3000-NA STEEL SECTION SECTION 'Q' SPLIT #13
140	G21-05-3123-100/14	1	1	802300	MCC 3000-NA STEEL SECTION SECTION'S 'R' & 'S' SPLIT #14
150	G21-05-3123-100/15	1	1	802300	MCC 3000-NA STEEL SECTION SECTION 'T' SPLIT #15
160	BR: 21 C-13-01	3	25	355033	MFP4W
170	BR: 21 C-13-02	3	5	355041	MFP12W
180	BR: 21 D-03-05	3	10	355119	MFPAG-SP190
190	BR: 21 B-15-04	4	30	404602	DUR-FT
200	BR: 21 B-14-04	4	5	404600	DUR-FB
210	BR: 21 B-19-03	3	19	357610	MPA10
220	BR: 21 B-17-03	3	4	357611	MPA6
230	BR: 21 B-17-03	3	7	357612	MPA4
240	BR: 21 B-19-04	3	10	357615	MPA2X6
250	BR: 21 B-18-02	3	15	357630	PP6
260	BR: 21 B-19-02	3	42	359050	WPG-RE
270	BR: 21 C-15-02	3	18	359053	AP2-STV

### Devices

0	V21-05-3123-1/1	15	16	061254	DIL0M(110V50HZ,120V60HZ) 35A 575V 15HP
20	BR: 21 F-05-02	0	6	046571	DIL2AM(110V50HZ,120V60HZ) BYPASS CONTACTOR (STOCK)
30	BR: 21 F-01-01	0	12	024626	11SDILM BYPASS CONTACTOR AUXILIARY CONTACTS (STOCK)
40	V21-05-3123-1/2	15	16	019880	22DILM STD CONT 16A 600V
50	V21-05-3123-1/3	30	32	019229	ZKDIL0M FITS 0M 0AM
60	V21-05-3123-1/4	4	4	072043	Z00-16 10-16 A SETTING RANGE
70	V21-05-3123-1/5	2	2	064924	Z00-4 2.4-4 A SETTING RANGE
80	V21-05-3123-1/6	1	1	067297	Z00-6 4-6 A SETTING RANGE
90	V21-05-3123-1/7	1	1	062551	Z00-2,4 1.6-2.4 A SETTING RANGE
100	V21-05-3123-1/8	0	1	069670	Z00-10 6-10 A SETTING RANGE
110	V21-05-3123-1/9	8	9	101867	A-MDE-NA KIT EXTENSIONS
120	V21-05-3123-1/10	8	9	254834	M22-DZ-B-GB14
130	V21-05-3123-1/11	23	21	066166	EMT6
140	V21-05-3123-1/12	16	17	216779	M22-LH-R
150	V21-05-3123-1/13	16	17	216780	M22-LH-G
160	V21-05-3123-1/14	32	34	216374	M22-A
170	V21-05-3123-1/15	16	17	216564	M22-LED230-R
180	V21-05-3123-1/16	16	17	216565	M22-LED230-G

Devices ... continued

190	V21-05-3123-1/17	9	10	216494	M22S-ST-GB0
200	V21-05-3123-1/18	9	10	216497	M22S-ST-GB7
210	V21-05-3123-1/19	7	7	218300	M22S-ST-GB5
220	V21-05-3123-1/20	7	7	216496	M22S-ST-GB6
230	V21-05-3123-1/21	30	30	101691	FT8471 50VA-480/120V 480/120V
240	V21-05-3123-1/22	1	1	101694	FT8474 75VA-480/120V 480/120V
250	V21-05-3123-1/23	30	30	101710	H-313.500 (1/2 AMP FUSE)
260	V21-05-3123-1/24	1	1	101711	H-313.750 (3/4 AMP FUSE)
270	V21-05-3123-1/25	31	31	101684	BK/S8301.1 (FUSEHOLDER) MAX. 10A FUSE
280	V21-05-3123-1/26	4	4	005472	NZMH4-18-200-OBI-FORMCDN
290	V21-05-3123-1/27	2	2	005469	NZMH4-10-50-OBI-FORMCDN
300	V21-05-3123-1/28	1	1	005470	NZMH4-12-80-OBI-FORMCDN
310	V21-05-3123-1/29	1	1	005468	NZMH4-6,6-32-OBI-FORMCDN
320	V21-05-3123-1/30	0	1	005471	NZMH4-15-120-OBI-FORMCDN
330	V21-05-3123-1/31	13	12	071408	NZMH6-63/ZM6A-15-NA 600V AC 22KA(160-320)
340	V21-05-3123-1/32	11	7	078527	NZMH6-63/ZM6A-30-NA 600V AC 22KA 260-500
350	V21-05-3123-1/33	8	10	083273	NZMH6-63/ZM6A-40-NA 40A600V 22KA(400-800)
360	V21-05-3123-1/34	2	2	085646	NZMH6-63/ZM6A-50-NA 600V AC 22KA(400-800)
370	V21-05-3123-1/35	0	2	088019	NZMH6-63/ZM6A-60-NA 600V AC 22KA 400-800
380	V21-05-3123-1/36	1	1	016830	NZMH6-100/ZM6A-70-NA 600V AC 22KA
390	V21-05-3123-1/37	0	4	021576	NZMH6-100/ZM6A-90-NA 600V AC 600-1200 22KA
400	V21-05-3123-1/38	7	3	023949	NZMH6-100/ZM6A-100-NA 600V(600-1200)22KA
410	V21-05-3123-1/39	1	1	019083	NZM12-800/ZM12-800-NA 600V AC 50KA (1600-16000)
420	V21-05-3123-1/40	1	1	093912	NZM10-400N/ZM-400-OBI-CNA
430	V21-05-3123-1/41	10	10	026643	A-NZM6 DEPTH 150-400MM
440	V21-05-3123-1/42	1	1	051377	A-NZM10
450	V21-05-3123-1/43	1	1	081221	A-NZM12 DEPTH 240-400MM
460	V21-05-3123-1/44	1	1	034949	D-NZM10
470	V21-05-3123-1/45	1	1	083696	H-NZM12 LINE OR LOAD SIDE
480	V21-05-3123-1/46	6	6	034940	K22X21-NZM10
490	V21-05-3123-1/47	8	9	357656	DUR-SDI-NZM4
500	V21-05-3123-1/48	12	11	357657	DUR-SDI-NZM6
510	V21-05-3123-1/49	10	10	357629	DUR-SDI-2NZM6-HOR
520	V21-05-3123-1/50	20	20	088865	H6-SW-NA
530	V21-05-3123-1/51	30	30	207593	H6-SW-NA-FORM3
540	V21-05-3123-1/52	1	1	093193	H10-SW-NA
550	V21-05-3123-1/53	1	1	088863	H12-SW-NA
560	V21-05-3123-1/54	1	1	043765	DILR31(110V50HZ,120V60HZ) 600V 16A 3NO 1NC
570	V21-05-3123-1/55	1	1	209974	DIL3MK72/22(110V50HZ,120V60HZ)

UP



**OP ... continued**

10	CP5-09981/1	1	1	852052	E3S-A20-LSI+PADLOCK+SHUNT TRIP C/W 120VAC SHUNT TRIP, LSI TRIP, PADLOCKING PROVISION, DOOR FRAME
3	CP5-09981/2	1	1	852220	1SDA038291R1
20	BR: 21 D-11-05	8	3	851960	170SHT-202 2000:5
	BR: 21 STOCK STEE	8			
30		1		852209	MSTBM1-414A-17-C (STOCK)
40		4		850891	RL08003 (STOCK)
50		1		850880	RL02503 (STOCK)
60	BR: 21 D-13-04	8	1	850594	SN1200
70	BR: 21 D-08-01	1	8	108795	USM1 GOULD ULTRASAFE MIDGET 1P F/BLK
80	BR: 21 D-09-01	1	7	108276	ATM6 GOULD MIDGET 600VAC FUSE
90	BR: 21 D-08-01	1	1	108278	ATM8 GOULD MIDGET 600VAC FUSE
100	BR: 21 D-09-06	8	2	850647	144908 50VA
110	CP5-10181/1	1	1	851012	GFR3-EN00
120	CP5-10105/1	1	1	850988	P7330-ION
130	BR: 21 D-12-02	8	1	851032	WVM911AL 480V
140	BR: 21 D-11-03	8	1	850637	PK-2(6422120G4)
150	BR: 21 D-08-04	1	15	112129	021286 SAK6EN, PA, BEIGE
160	BR: 21 D-08-04	1	1	112134	011796 AP FOR SAK4/SAK10, PA, BG
170	BR: 21 D-08-03	8	65	851147	064496 STV2/10, COMPLETE, PA, BG
180		1400		851830	PS-187-2W4-PF
190	CP5-10182/1	2	2	850862	RL00403
200	CP5-10182/2	4	4	850867	RL00803
210	CP5-10182/3	1	1	850880	RL02503
220	CP5-10182/4	4	4	850887	RL04503
230	CP5-10182/5	2	2	850889	RL05503
240	CP5-10182/6	10	10	850891	RL08003
250		0		852163	F7U41P5
260	CP5-10182/8	2	2	852167	F7U43P7
270	CP5-10182/9	1	1	852147	F7U4011
280	CP5-10182/10	2	2	852150	F7U4022
290	CP5-10182/11	1	1	852151	F7U4030
300	CP5-10182/12	7	7	852153	F7U4045
310	CP5-10452/1	15	15	852170	F7U KEYPAD ADAPTER
320	CP5-10452/2	5	5	852172	F7U CABLE (3FT)
330	CP5-10452/3	10	10	852171	F7U CABLE (7FT)
340		1		852221	SL750CJ 480/120
350	BR: 21 D-11-03	8	1	851059	NT538-40C
360	CP5-10183/1	3	3	850389	R333-20KVAR 480V
380	CP5-10449/1	2	2	850867	RL00803
390	CP5-10449/2	1	1	852165	F7U42P2
400	CP5-10449/3	1	1	852167	F7U43P7

<b>Customer :</b> FORT ENERGY CORPORATION,	2128870	<b>Customer Order :</b>	21-05-3123
<b>Catalogue # :</b> 6 SECTION MCC3000 MOTOR CONTROL CENTRE		<b>Line No :</b>	2
<b>Project / Tag :</b> CLEARWATER GAS PLANT		<b>Order Date :</b>	5/4/2005
<b>Inst Specs :</b>		<b>Customer PO :</b>	43874-13
<b>Order Specs :</b> DELIVERY: JUNE 20, 2004		<b>Order Qty :</b>	1
TAG: CLEARWATER GAS PLANT			

ATTN.: BLAINE OWEN  
 RPO #: 43874-13 REV. 0  
 AFE #:  
 ACCT CODE: 9360 364  
 LSD: 11-17-63-06-W5M

DRAWINGS FOR INFORMATION ONLY  
 EMAIL TO BLAINE OWEN @ BDR  
 blaineo@bdreng.com

FAX PACKING SLIP AND BOL TO 270-2685

BUILT AS PER QUOTATION #Q21-05-0298

480V 3PH 60HZ - 2500A COPPER BUS BARS  
 65KA

Piece	PO / Bin Location	Qty Req	Qty Rec	Article	Catalogue #
<b>Assembly</b>					
<b>Steel</b>					
10	G21-05-3123-200/1	1	1	802300	MCC 3000-NA STEEL SECTION SECTION 'A' SPLIT #1
20	G21-05-3123-200/2	1	1	802300	MCC 3000-NA STEEL SECTION SECTION 'B' SPLIT #2
30	G21-05-3123-200/3	1	1	802305	MCC 3000-NA (TOC) STEEL SECTION SECTION 'C' c/w TOC #3465 SPLIT #3
40	G21-05-3123-200/4	1	1	802305	MCC 3000-NA (TOC) STEEL SECTION SECTION 'D' c/w TOC #3465 SPLIT #4
50	G21-05-3123-200/5	1	1	802300	MCC 3000-NA STEEL SECTION SECTION'S 'E' & 'F' SPLIT #5
60	BR: 21 C-13-01	3	7	355033	MFP4W
70	BR: 21 B-15-04	4	7	404602	DUR-FT
80	BR: 21 B-17-03	3	2	357611	MPA6
90	BR: 21 B-19-04	3	4	357615	MPA2X6
100	BR: 21 Q-01-04	3	16	358310	C04.380 CDN CONNECTOR NA130Z-6
110	BR: 21 C-04-01	4	2	490483	TOC5942-2
120	BR: 21 B-18-02	3	2	357630	PP6
130	BR: 21 B-19-02	3	11	359050	WPG-RE
140	BR: 21 C-15-02	3	2	359053	AP2-STV
150	BR: 21 B-17-03	3	1	357612	MPA4

**Devices**

10	V21-05-3123-2/1	2	2	061427	DIL1AM(110V50HZ,120V60HZ) 55A 575V 25HP
----	-----------------	---	---	--------	--

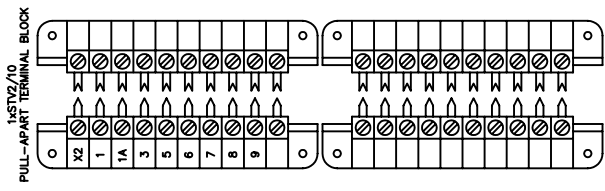
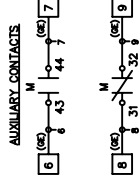
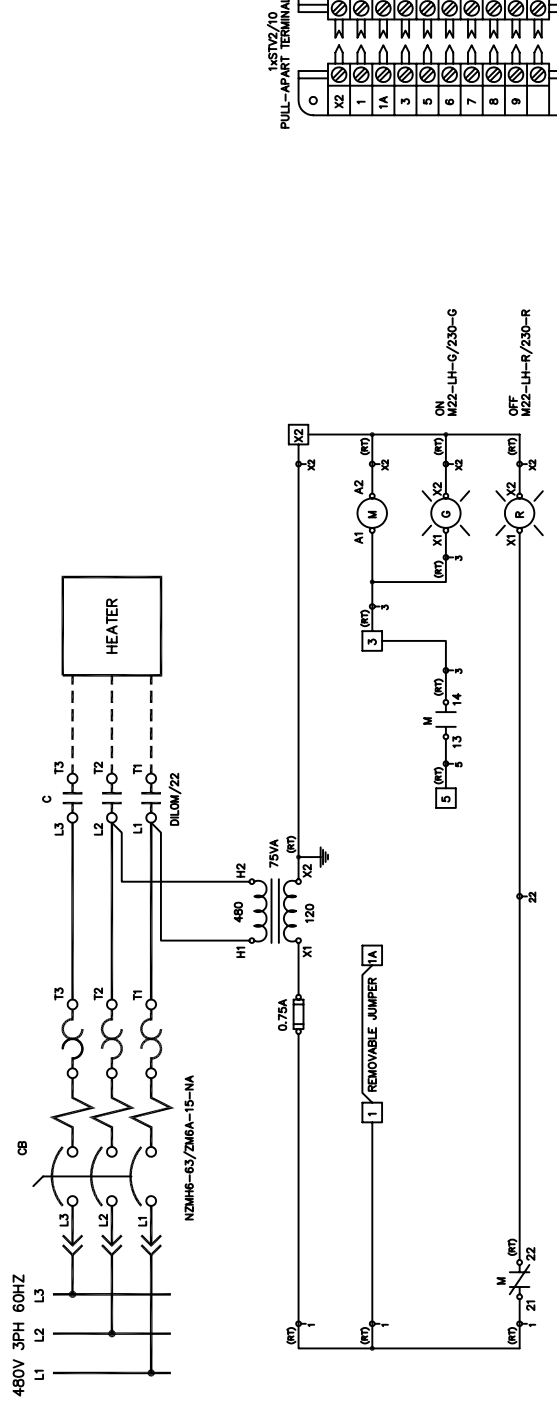
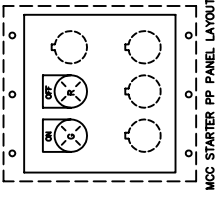
Devices ... continued

20	V21-05-3123-2/2	2	2	019880	22DILM STD CONT 16A 600V
30	V21-05-3123-2/3	4	4	021602	ZKDIL1M FITS 1M 1AM 2M 2AM
40	V21-05-3123-2/4	2	2	081535	Z1-24 16-24 A SETTING RANGE
50	V21-05-3123-2/5	2	2	101867	A-MDE-NA KIT EXTENSIONS
60	V21-05-3123-2/6	2	2	254834	M22-DZ-B-GB14
70	V21-05-3123-2/7	2	2	066166	EMT6
80	V21-05-3123-2/8	2	2	216779	M22-LH-R
90	V21-05-3123-2/9	2	2	216780	M22-LH-G
100	V21-05-3123-2/10	4	4	216374	M22-A
110	V21-05-3123-2/11	2	2	216564	M22-LED230-R
120	V21-05-3123-2/12	2	2	216565	M22-LED230-G
130	V21-05-3123-2/13	2	2	216494	M22S-ST-GB0
140	V21-05-3123-2/14	2	2	216497	M22S-ST-GB7
150	V21-05-3123-2/15	2	2	101691	FT8471 50VA-480/120V 480/120V
160	V21-05-3123-2/16	2	2	101710	H-313.500 (1/2 AMP FUSE)
170	V21-05-3123-2/17	2	2	101684	BK/S8301.1 (FUSEHOLDER) MAX. 10A FUSE
180	V21-05-3123-2/18	2	2	106104	NZM6B-63-OBI-CNA 63 AMP 600V
190	V21-05-3123-2/19	2	2	201735	ZM6-50-320-OBI-CNA FLC 13-28A (160-320A)
200	V21-05-3123-2/20	4	4	071408	NZMH6-63/ZM6A-15-NA 600V AC 22KA(160-320)
210	V21-05-3123-2/21	4	4	076154	NZMH6-63/ZM6A-25-NA 25A 600V AC 22KA(160-320)
220	V21-05-3123-2/22	2	2	016830	NZMH6-100/ZM6A-70-NA 600V AC 22KA
230	V21-05-3123-2/23	1	1	022093	N12-800-CNA 800A 600V
240	V21-05-3123-2/24	2	2	026643	A-NZM6 DEPTH 150-400MM
250	V21-05-3123-2/25	2	2	081221	A-NZM12 DEPTH 240-400MM
260	V21-05-3123-2/26	1	1	062372	KV-2NZM12
270	V21-05-3123-2/27	9	8	088865	H6-SW-NA
280	V21-05-3123-2/28	4	4	207593	H6-SW-NA-FORM3
290	V21-05-3123-2/29	2	2	088863	H12-SW-NA
300	V21-05-3123-2/30	2	2	357657	DUR-SDI-NZM6
310	BR: 21 E-06-03	3	1	357659	DUR-SDI-NZM6-HOR
320	BR: 21 I-06-02	0	1	023949	NZMH6-100/ZM6A-100-NA 600V(600-1200)22KA
330	BR: 21 E-06-03	3	4	357629	DUR-SDI-2NZM6-HOR
340		1		022093	N12-800-CNA 800A 600V

OP

10	BR: 21 D-08-03	8	4	851147	064496 STV2/10, COMPLETE, PA, BG
30	CP5-10131/1	2	2	850838	45KVA 480-120/208
40	CP5-10132/1	4	4	852040	P1AL4A242I
50	CP5-10132/2	100	216	850225	BAB1015
60	CP5-10448/1	43	43	850226	BAB1020
70	CP5-10448/2	25	25	851782	QBGFEP1015





LEGEND:  
 CURVE/PANEL WIRING -  
 SOLID LINE -  
 DASHED LINE -  
 FIELD WIRING  
 3W - BLACK  
 2W - GREEN  
 1W - RED  
 0W - BLUE  
 1W - AMBER

MCC STARTER PP PANEL LAYOUT		1&1/2\"/>	
Cust. order # 43874-98		Moeller Order #	21-05-3123A
DRAWN C PALPARAN		M OELLER CALGARY BRANCH	
DATE AUG 08 05		Dwg # 3WD-463-21-05-3123A-B	
APPR AUG 29 05		SIZE 1 5KW BREAKER CONTACTOR	
Date		CLEARWATER GAS PLANT	
Appr.		FORT ENERGY CORPORATION	
1	Rev.	UPDATED AS BUILT	Description
1	Rev.	1	Rev.

**BILL OF MATERIAL**

**WO #: 21-05-3123A-2/1**

**CUSTOMER: FORT ENERGY CORPORATION,**

**SIZE 1 BREAKER/CONTACTOR MCC3000 ADD UNI**

**CUSTOMER PO #: 43874-98**

**QTY     ARTICLE #     CATALOGUE #**

**STEEL**

1	354766	MD4-P+184+174+190
1	356287	MFP4W-P4
1	357611	MPA6
1	404602	DUR-FT
1	359050	WPG-RE
1	357630	PP6
1	359053	AP2-STV

**DEVICES**

1	071408	NZMH6-63/ZM6A-15-NA
1	019880	22DILM     STD CONT 16A 600V
1	061254	DIL0M(110V50HZ,120V60HZ)
1	019229	ZKDIL0M     FITS 0M 0AM
1	101694	FT8474 75VA-480/120V
1	101711	H-313.750 (3/4 AMP FUSE)
1	101684	BK/S8301.1 (FUSEHOLDER) MAX. 10A FUSE
1	357657	DUR-SDI-NZM6
1	207593	H6-SW-NA-FORM3
1	216564	M22-LED230-R
1	216779	M22-LH-R
1	216565	M22-LED230-G
1	216780	M22-LH-G
2	216374	M22-A
1	218300	M22S-ST-GB5
1	216496	M22S-ST-GB6

**OP**

2	851147	064496 STV2/10, COMPLETE, PA, BG
---	--------	----------------------------------

**BILL OF MATERIAL**  
**TAG: CLEARWATER GAS PLANT**  
**WO #: 21-05-3123A-1/1**  
**CUSTOMER: FORT ENERGY CORPORATION,**  
**3HP VFD MCC3000 ADD UNIT**

**QTY ARTICLE # CATALOGUE #**

**STEEL**

1	354211	MD12-P
1	355041	MFP12W
1	357611	MPA6
1	404602	DUR-FT
1	404600	DUR-FB
1	359050	WPG-RE
1	359053	AP2-STV

**DEVICES**

1	071408	NZMH6-63/ZM6A-15-NA	600V AC 22KA(160-320)
1	357657	DUR-SDI-NZM6	
1	207593	H6-SW-NA-FORM3	
1	066166	EMT6	
1	101694	FT8474 75VA-480/120V	
1	101684	BK/S8301.1 (FUSEHOLDER) MAX. 10A FUSE	
1	101711	H-313.750 (3/4 AMP FUSE)	

**OP**

1	852165	F7U42P2	
2	850862	RL00403	
1	852170	F7U KEYPAD ADAPTER	
2	851147	064496 STV2/10, COMPLETE, PA, BG	
1	852171	F7U CABLE (7FT)	