

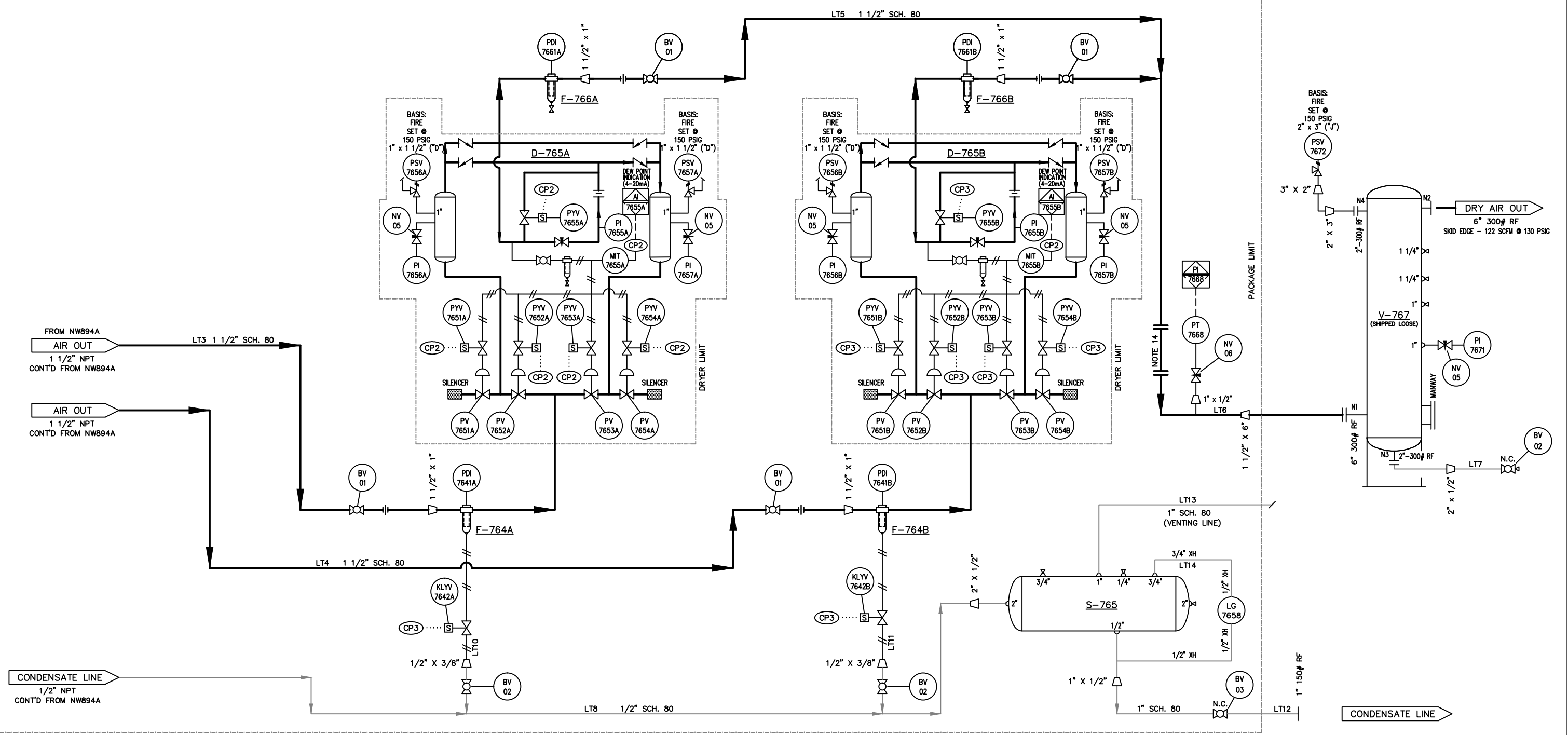
D-765A/B
HEATLESS AIR DRYER
 AIRTEK TWOF130E w/ POWER-LOC
 165 SCFM @ 135 PSIG
 MAWP: 150 PSIG
 120V/1Ø/60 HZ
 S/N (A): 120302712
 S/N (B): 120302702
 8" OD x 61" LG (x4)

F-764A/B
PRE-FILTER
 AIRTEK COALESCE JCO150-C
 185 SCFM @ 135 PSIG
 MAWP: 500 PSIG
 0.001 MICRON FILTER
 c/w AUTO DRAIN

F-766A/B
AFTER FILTER
 AIRTEK PARTICULATE JCO150-F
 306 SCFM @ 135 PSIG
 MAWP: 500 PSIG
 0.9 MICRON FILTER
 MANUAL DRAIN

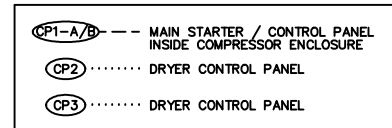
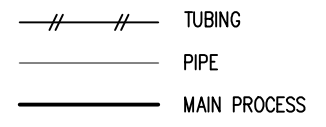
S-765
STORAGE TANK
 STEEL FAB # A10029 HORIZONTAL
 MAWP: 14.9 PSIG @ 400F.
 MDMT: -20F @ 200 PSIG.
 60 GAL., 20" Ø x 48" LG.
 S/N: 678928
 CRN: M3329-5C

V-767
DRY AIR RECEIVER
 STEELFAB C104718X VERTICAL
 MAWP: 200 PSIG @ 400F.
 MDMT: -50F @ 200 PSIG.
 5500 GAL., 72" Ø x 326.75" LG.
 S/N: 694012
 CRN: K8730.12



GENERAL NOTES

1. ALL PIPING TO BE DESIGNED IN ACCORDANCE WITH ASME B31.3.
2. DESIGN PRESSURE IS 150 PSIG.
3. MAXIMUM ALLOWABLE DESIGN TEMPERATURE IS 212°F.
4. AIR TEST PRESSURE IS 165 PSIG.
5. ALL PIPING IS TO BE SCH. 80 WALL A106B, UNLESS OTHERWISE NOTED.
6. ALL PIPE FITTINGS ARE TO BE 3000# A105, UNLESS OTHERWISE NOTED.
7. ALL PACKAGE TUBING IS TO BE 316SS WITH SWAGelok 316SS FITTINGS.
8. ALL DRYER PIPING IS ENAMEL PAINTED UNLESS NOTED OTHERWISE.
9. ALL DRYER PIPE FITTINGS ARE 3000# UNLESS NOTED OTHERWISE.
10. DRYER PURGE RATE TO BE SET @ 20 CFM. DRYER SET FOR -60°C DEWPOINT.
11. ALL BALL VALVES TO BE NAVCO, 2000# WOG, 316 S.S.
12. PIPING THROUGH AND OUTSIDE BUILDING WALL TO BE SCH. 80 A333 GR.6, FITTINGS & FLANGES TO BE A350 LF2 CL-1.
13. DRY AIR RECEIVER (V-767) TO BE REMOVED OFF SKID PRIOR TO LIFTING THIS PACKAGE.
14. ADD FLANGED SPOOL FOR FUTURE METER. 6 3/4" LONG, 1 1/2" RF 150#



6	AS BUILT	13-07-11	PLC	SK
5	AS BUILT	13-01-18	PLC	SK
4	REVISED AS PER CUSTOMER MARK-UPS	12-04-03	GE	SK
3	REVISED AS PER CUSTOMER MARK-UPS	12-01-23	GE	SK
2	REVISED AS PER CUSTOMER MARK-UPS & RESUBMITTED	11-12-12	PLC	SK
1	REVISED AS PER CUSTOMER MARK-UPS	11-11-22	PLC	SK
0	ISSUED FOR APPROVAL	11-10-27	LJ/PLC	SK
REV	DESCRIPTION	DATE	DWN	CHK

Northwest Equipment Ltd.

PROCESS & INSTRUMENT DIAGRAM
DUPLEX COMPAIR L30 AIR COMPRESSOR PACKAGE (M-760)

CLIENT	ENCANA CORP. c/o SOLARIS M.C. INC.	SCALE	NTS
LOCATION	SWAN GATHERING COMPRESSOR STATION, B.C.	DWN BY	PLC
LSO	c-12-B-93-P-9	DATE	11-09-07
JOB	NW894	DWG	NW894PFB
REV	6		