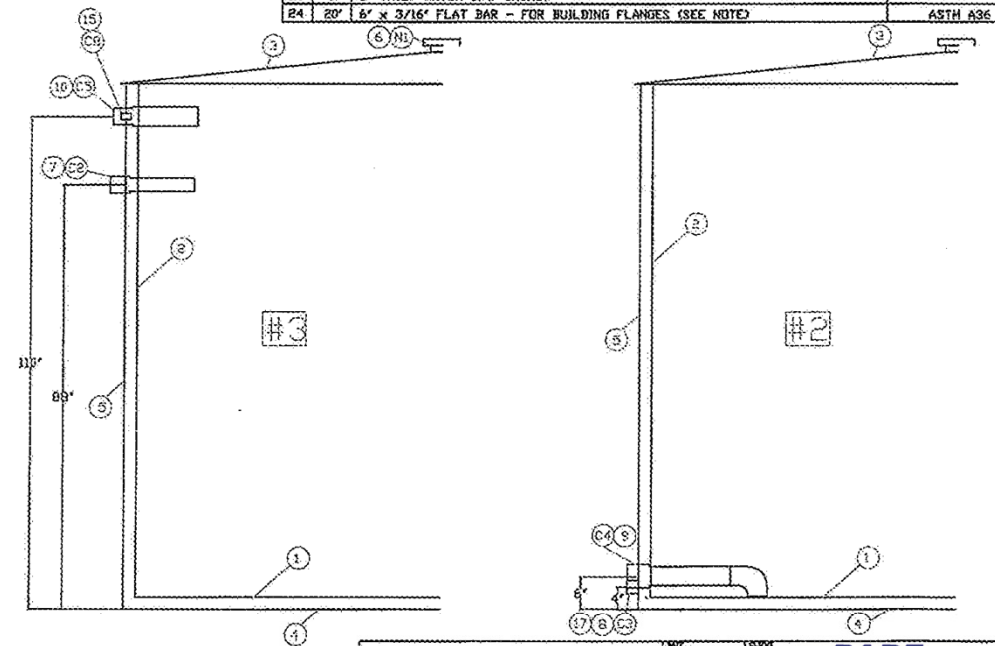
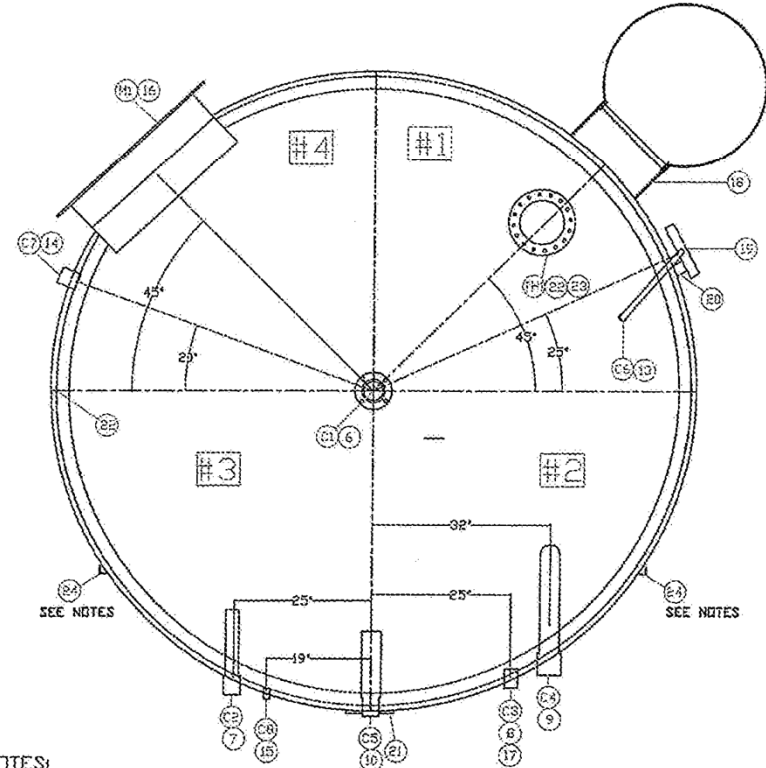


CONNECTION SCHEDULE									
NK	QTY	SIZE	SCH	RATING	TYPE	ELEVATION	PROJECTION	DESCRIPTION	
N1	1	4"	-	150#	RFSO FLG.	DOME	6"	VENT (gooseneck)	
C2	1	2"	-	3000#	FULL CPLG	88"	2"	INLET	
C3	1	2"	SCH. 80	-	NIPPLE	4"	2"	SIGHT GLASS	
C4	1	3"	-	3000#	FULL CPLG	6"	2"	LOAD OUT C/W DOWNCOMER	
C5	1	2"	-	3000#	FULL CPLG	110"	2"	H.L.S.D	
C6	1	3/4"	-	3000#	FULL CPLG	DOME	2"	GAUGE BOARD ASSEMBLY	
C7	1	2"	-	3000#	FULL CPLG	4"	2"	SECONDARY DRAIN	
C8	1	1/2"	-	3000#	FULL CPLG	110"	1"	BREATHER VENT	
M1	1	30" ROUND	-	-	-	24"	-	MANWAY (DUAL)	
TH1	1	8" ROUND	SCH. 40	-	-	DOME	-	THIEF HATCH FLANGE	

BILL OF MATERIALS			
NK	QTY	DESCRIPTION	MATERIAL
1	2	PRIMARY FLOOR 1/4" X 72" X 44"	ASTM A36
2	2	PRIMARY WALL 3/16" X 60" X 424"	ASTM A36
3	2	PRIMARY ROOF 3/16" X 72" X 144"	ASTM A36
4	2	SECONDARY FLOOR 3/16" X 72" X 144"	ASTM A36
5	2	SECONDARY WALL 3/16" X 60" X 424"	ASTM A36
6	1	4" 150# RFSO FLANGE C/W GOOSENECK	SA-105-N
7	1	2" 3000# COUPLING INLET C/W 2" SCH. 40 PIPE X 9" LONG	SA-105-N/SA-106-B
8	1	2" NIPPLE X 8" NIPPLE NEEDS TO BE CUT IN HALF	SA-105-N
9	1	3" 3000# COUPLING LOAD OUT C/W 3" SCH. 40 PIPE X 18" LONG AND 3" SCH. 40 LR 90 ELBOW	SA-105-N/SA-106-B SA-234-WPB
10	1	2" 3000# COUPLING H.L.S.D C/W 2" SCH. 40 PIPE X 6" LONG	SA-105-N/SA-106-B
13	1	3/4" 3000# COUPLING	SA-105-N
14	1	2" 3000# COUPLING	SA-105-N
15	1	1/2" 3000# COUPLING	SA-105-N
16	1	30" ROUND DUAL MANWAY SET C/W BLINDS & GASKETS	ASTM A36
17	1	BULLSEYE SIGHT GLASS	-
18	1	10" LADDER C/W 1 SAFETY CAGE & 6 BRACKET CLIPS	-
19	1	10" GAUGE BOARD ASSEMBLY C/W PULLEY SET, FLOAT, CABLE & CABLE CLAMPS	-
20	2	GAUGE BOARD TABS - FLAT BAR (1 SLOTTED & 1 BRILLED)	-
21	1	NAMEPLATE RACKING AND NAMEPLATE	-
22	1	8" ROUND SHOP BUILT THIEF HATCH FLANGE C/W 8" SCH. 40 PIPE X 12" LONG	ASTM A36/SA-106-B
23	1	8" THIEF HATCH C/W GASKET	-
24	20	6" X 3/16" FLAT BAR - FOR BUILDING FLANGES (SEE NOTE)	ASTM A36



- NOTES:**
- INSIDE EDGES OF NOZZLE NECKS, INSPECTION OPENINGS AND MANWAYS SHALL BE ROUNDED TO A RADIUS OF 1/4" MIN OR ONE HALF THE WALL THICKNESS IF THE PIPE WALL IS LESS THAN 1/2".
 - 1" OVERHANG ON DOME
 - EXCESS FLOOR TO BE LEFT SQUARE FOR SKID MOUNTING BY TANKSTORE.
 - LADDER TO BE INSTALLED ON THE TANK PRIOR TO LEAVING TANKSTORE'S WELDING SHOP.
 - THIEF HATCH IS TO BE LEVEL WITH THE FLOOR.
 - BUILDING IRON FLANGES TO BE ADDED ONCE THE TANK IS MOUNTED ON THE SKID.
 - CAPACITY: 185 BBL
 - WEIGHT DRY: 8,000 LBS

NO.	DATE	REVISION	BY	APP
0	12-03-07	ISSUED FOR CONSTRUCTION	CT	CT

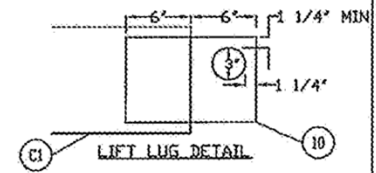
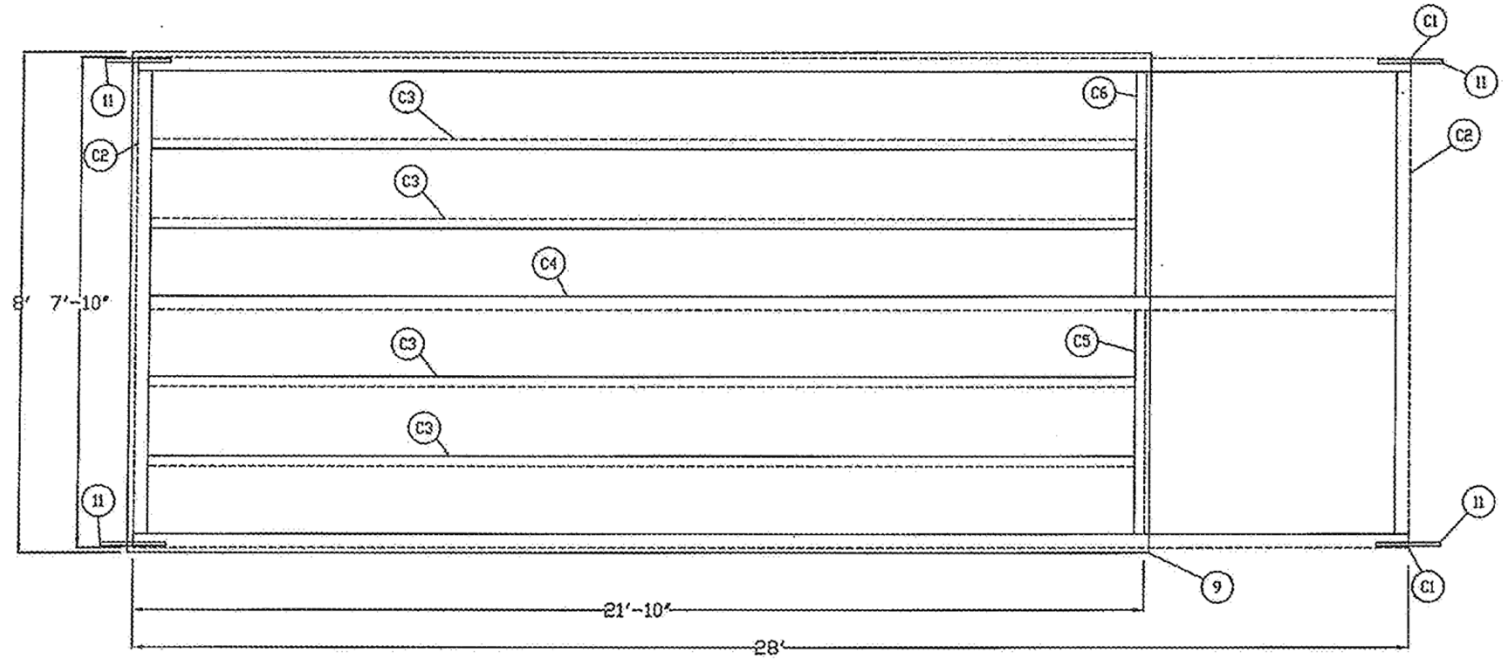
RARE
 OILFIELD SERVICES CORP.

PROJECT NO: 0012-03-07
 TITLE: 185 BBL DW TANK
 DRAWN BY: G. TURIGAN
 CHECKED BY: [Signature]
 DATE: 12/3/07

SHEET NO: 1 OF 1
 DATE: 12/3/07

BILL OF MATERIALS

PK	QTY.	DESCRIPTION
C1	2	C12 x STD x 28'
C2	2	C12 x STD x 7'-3 5/8'
C3	4	C6 x STDx 21'-4 5/8'
C4	1	C12 x STDx 27'-9 5/8'
C5	1	C12 x STDx 44'-3/4'
C6	1	C12 x STDx 42'-1/4'
9	1	CHECKER PLATE: 3/16" x 8'-0" x 10'-0" SHOP FIT
10	1	BASE PLATE: 1/4" x 2'-0" x 2'-0"
11	4	LIFT LUG 8" x 3/4" x 12"



NO.	DATE	REVISION	BY	APP
0	12-03-02	ISSUED FOR CONSTRUCTION	CT	CT

DATE			
DESIGNED BY		PROJECT NO. 5353 DRAWING NO. 5353 S	
DRAWN BY C. TURIGAN		TITLE 12" CHANNEL SKID	
CHECKED BY		PROJECT NO. 5353 DRAWING NO. 5353 S	
APPROVED BY		PROJECT NO. 5353 DRAWING NO. 5353 S	
SCALE NTS		SHEET NO. 1 OF 1 DRAWING NO. 5353 S	