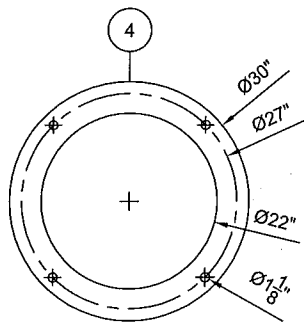
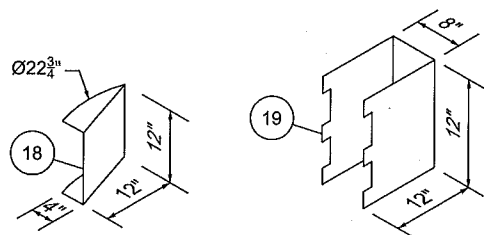


BILL OF MATERIALS

ITEM	DESCRIPTION	MATERIAL	LENGTH	QTY.	HEAT NUMBER
1	S.E. HEAD, 24"OD X 0.625" NOM (0.5625" MIN)	SA516-70N		2	
2	SHELL, 24"OD X 0.625" NOM.	SA516-70N	60"	1	
3	SKIRT, 24"OD X 0.375" NOM.	SA53B	17-5/8"	1	
4	BASE RING, 30"OD X 22"ID X 1/2"	A36/44W		1	
5	RFWN, 3" 300 ANSI SCH. 160	SA105N		2	
6	PIPE, 3" SCH. 160 (0.438") BOE	SA106B	3-3/16"	1	
7	PIPE, 3" SCH. 160 (0.438") BOE	SA106B	4-1/4"	1	
8	RFWN, 2" 300 ANSI SCH. 160	SA105N		1	
9	PIPE, 2" SCH. 160 (0.344") BOE	SA106B	4-1/4"	1	
10	PIPE, 2" SCH. 160 (0.344") BOE	SA106B	5-1/8"	1	
11	PIPE, 2" SCH. 160 (0.344") BOE	SA106B	15"	1	
12	WELD 90 ELBOW, 2" SCH. 160 LR	SA234WPB		1	
13	TOL, 2" 3M X 36" - 20" RUN SIZE	SA105N		4	
14	TOL, 3/4" 3M X 36" - 14" RUN SIZE	SA105N		3	
15	TOL, 1/2" 3M X 36" - 10" RUN SIZE	SA105N		1	
16	NAME PLATE BRACKET	A36/44W		1	
17	VESSEL NAMEPLATE	ALUMINUM		1	
18	INLET DIVERTER - PLATE, 3/16" (SEE DETAIL)	A36/44W		1	
19	FLOAT HOOD - PLATE, 3/16" (SEE DETAIL)	A36/44W		1	
20	DEMISTER, 22-3/4"Ø X 4"TK X 9LB, 1 PIECE, NO GRID	316SS		1	
21	FLAT BAR, 1/4" X 1"	A36/44W	22 3/8"	4	
22	FLAT BAR, 1/4" X 1"	A36/44W	19 3/16"	4	
23	EXPANDED METAL - FLAT, 3/4" X 9LB	A36/44W		A/R	



BASE PLATE

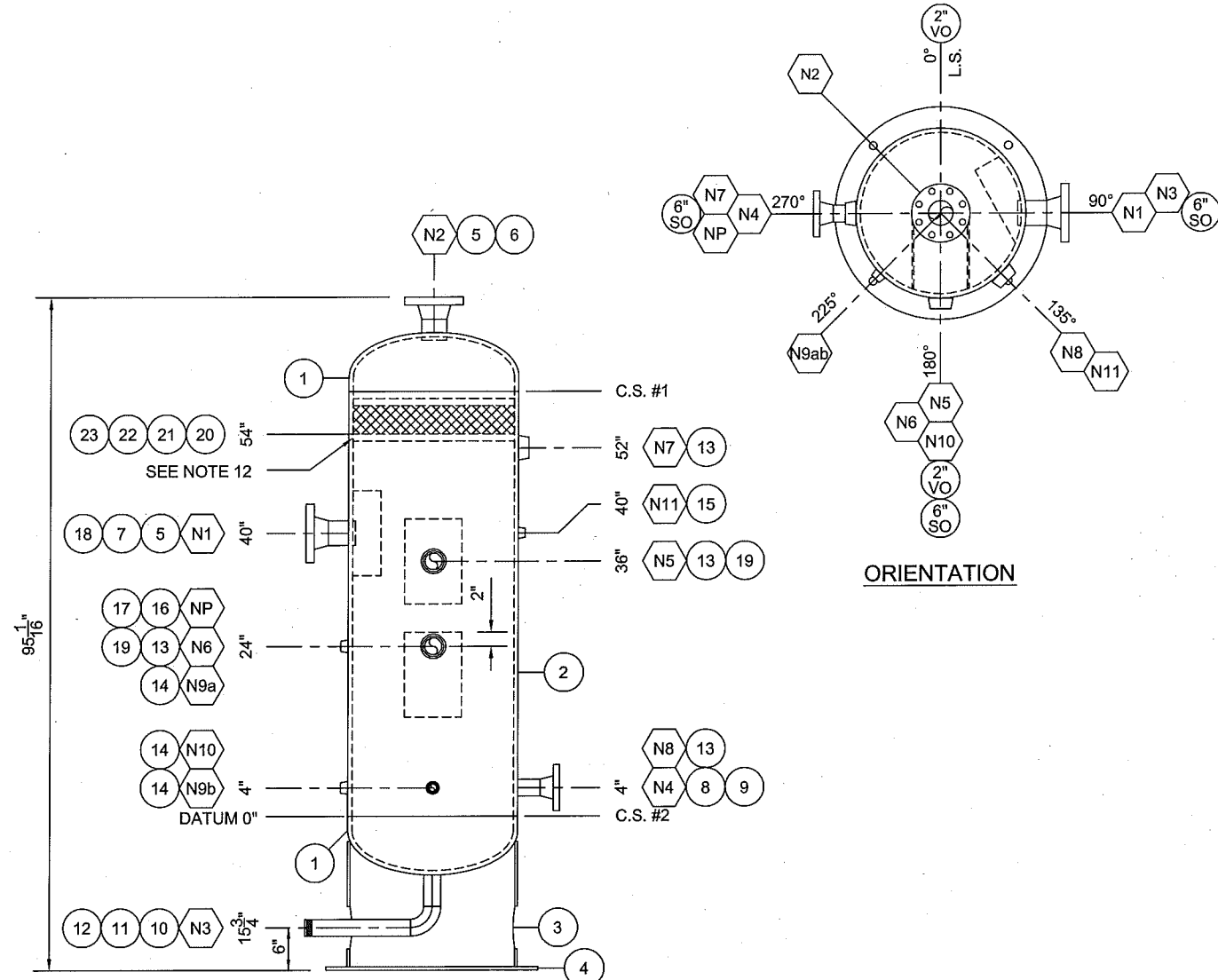


INLET DIVERTER
N.T.S.

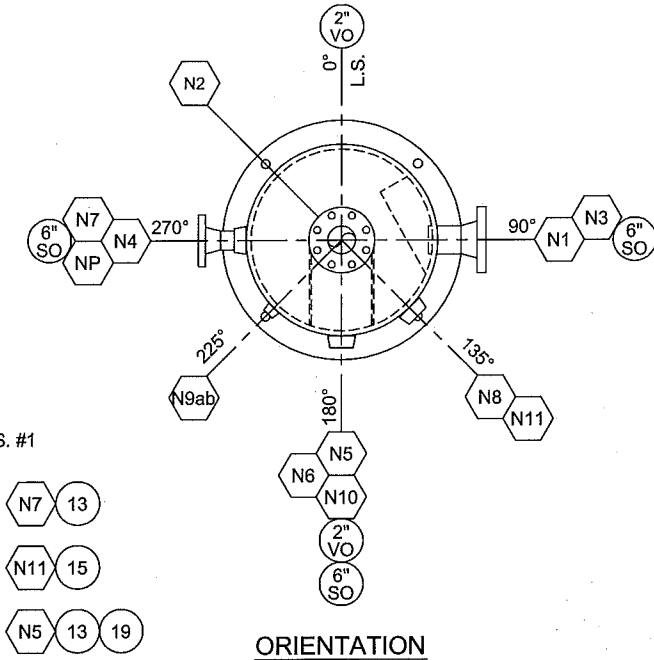
FLOAT HOOD
N.T.S.

MAXIMUM HOLE SIZES		
CPLG/TOL	2"	2.125"
CPLG/TOL	1-1/2"	1.650"
CPLG/TOL	1-1/4"	1.410"
CPLG/TOL	1"	1.065"
CPLG/TOL	3/4"	0.800"
CPLG/TOL	1/2"	0.590"

WELD DETAIL 1	WELD DETAIL 2	WELD DETAIL 3	WELD DETAIL 4	WELD DETAIL 5	WELD DETAIL 6	WELD DETAIL 7	WELD DETAIL 8	WELD DETAIL 9	WELD DETAIL 10	WELD DETAIL 11	WELD DETAIL 12	WELD DETAIL 13	WELD DETAIL 14	WELD DETAIL 15	WELD DETAIL 16	WELD DETAIL 17	WELD DETAIL 18
WPS ROOT: GF-3N R1 F&C: GF-1N R1	WPS ROOT: GF-3N R1 F&C: GF-1N R1	WPS ROOT: GF-3N R1 F&C: GF-1N R1	WPS ROOT: GF-1N R1 GF-3N R1 F&C: GF-1N R1	WPS ROOT: GF-1N R1 GF-3N R1 F&C: GF-1N R1	WPS ROOT: GF-1N R1 GF-3N R1 F&C: GF-1N R1	WPS ROOT: GF-1N R1 GF-3N R1 F&C: GF-1N R1	WPS ROOT: GF-1N R1 GF-3N R1 F&C: GF-1N R1	WPS ROOT: GF-1N R1 GF-3N R1 F&C: GF-1N R1	WPS ROOT: GF-1N R1 GF-3N R1 F&C: GF-1N R1	WPS ROOT: GF-1N R1 GF-3N R1 F&C: GF-1N R1	WPS ROOT: GF-1N R1 GF-3N R1 F&C: GF-1N R1	WPS ROOT: GF-1N R1 GF-3N R1 F&C: GF-1N R1	WPS GF-1N R1 OR GF-3N R1	WPS GF-1N R1 OR GF-3N R1	WPS GF-1N R1 OR GF-3N R1	WPS GF-1N R1 OR GF-3N R1	WPS GF-1N R1
LONG SEAM (WITHOUT BACKING) R=1/8" (±1/16") a=60° (±15°) h=1/16" (±1/16")	CIRC SEAM (WITHOUT BACKING) R=1/8" (±1/16") a=60° (±15°) h=1/16" (±1/16")	3:1 TRANSITION R=1/8" (±1/16") a=60° (±15°) h=1/16" (±1/16")	R=1/8" (±1/16") a=75° (±15°) h=1/8" (±1/16")	R=1/8" (±1/16") a=40° (±15°) h=1/8" (±1/16")	R=1/8" (±1/16") a=40° (±15°) h=1/8" (±1/16")	R=1/8" (±1/16") a=40° (±15°) h=1/8" (±1/16")	R=1/8" (±1/16") a=40° (±15°) h=1/8" (±1/16")	R=1/8" (±1/16") a=40° (±15°) h=1/8" (±1/16")	R=1/8" (±1/16") a=40° (±15°) h=1/8" (±1/16")	R=1/8" (±1/16") a=40° (±15°) h=1/8" (±1/16")	R=1/8" (±1/16") a=40° (±15°) h=1/8" (±1/16")	R=1/8" (±1/16") a=40° (±15°) h=1/8" (±1/16")	TYPICAL SHIRT & BASE RING ATTACHMENT WELD	TYPICAL NON-PRESSURE ATTACHMENT WELD (INTERNAL)	TYPICAL NON-PRESSURE ATTACHMENT WELD (INTERNAL, DAVIT ARM)	TYPICAL NON-PRESSURE ATTACHMENT WELD (INTERNAL)	TYPICAL NON-PRESSURE ATTACHMENT WELD (LIFTING LUGS)



ELEVATION
DIMENSIONS REFERENCED
FROM DATUM UNLESS
OTHERWISE SHOWN



ORIENTATION

GENERAL NOTES

- QUALITY CONTROL PROGRAM NUMBER IS AQP-1464
- WELDING PROCEDURE REGISTRATION NUMBER IS WP-2843.2
- ALL FITTINGS TO CONFORM TO THE LATEST ASME CODES; B16.5 (2009), B16.9, B16.11
- MTR'S ARE REQUIRED FOR ALL WELDED PRESSURE ATTACHMENTS (PLATE, PIPE, WELD FITTINGS)
- VESSEL (S) TO BE THOROUGHLY CLEANED INSIDE & OUTSIDE, FREE FROM LOOSE SCALE & FOREIGN MATTER
- ALL OPENINGS SHALL BE COVERED FOR SHIPPING
- ALL BOLT HOLES TO STRADDLE NATURAL CENTER LINES UNLESS OTHERWISE NOTED
- GENERAL DEVIATION TOLERANCE IS +/- 1/8"
- OVERALL LENGTH TOLERANCE IS +/- 1/4"
- ANGULAR TOLERANCE IS +/- 1°
- INSIDE & OUTSIDE OF NOZZLE TO BE ROUNDED PER UG-76(C)
- DEMISTER SUPPORT BARS TO BE INSTALLED ON 4" CENTERS

EXTERNAL PAINTING & PREP.

SURFACE PREP (EXT): SSPC-SP6
 PRIMER (EXT): RUST-OLEUM QUICK DRY ENAMEL
 TOP COAT (EXT): RUST-OLEUM ENAMEL
 TOP COAT THICKNESS (EXT): DFT OF 1.5-2.0 MILS
 TOP COAT COLOR: LIGHT MACHINE GRAY
 INSULATION: .
 JACKET: .
 BANDING: .

INTERNAL COATING

SURFACE PREP (INT.): .
 TOP COAT (INT.): .
 TOP COAT THICKNESS (INT): .

REV.	DATE	DESCRIPTION	BY	CHKD	APP'D
1	03/15/13	AS BUILT	DB		
0	09/27/12	ISSUED FOR CONSTRUCTION	DB		

ASME SECTION VIII DIV. 1, 2010 ED. 2011a ADD.

CRN: V2315.2134	SERIAL NO. (s): 12-052-01
M.A.W.P.: 720 PSIG (4964 kPa) AT +130°F (+54°C)	
M.D.M.T.: -20°F (-29°C) AT 720 PSIG (4964 kPa)	
IMPACT TESTING EXEMPT PER UG20f (1-5)	
VESSEL TYPE: VERTICAL	P.W.H.T.: 1150°F FOR 60 MINUTES
RADIOGRAPHY: RT-1	CIRC. SEAM: FULL LONG SEAM: FULL
JOINT EFFICIENCY:	CIRC. SEAM: 1.00 LONG SEAM: 1.00
NOZZLE RADIOGRAPHY: N/A	UT: N/A
C.A.: 1/8"	HYDROSTATIC TEST: 936 PSIG (6454 kPa)
VOLUME: 15.90 ft ³ (0.45 m ³)	WEIGHT (DRY): 1500 lb (680 kg)



PennWest Exploration

CUSTOMER: PennWest Exploration TITLE / PROJECT: 3" INLET (10 WELLS) / 4" HEADER
 24"OD X 60" S/S X 720 PSI
 AB SOUR TEST SEPARATOR PKG

DRAWING NAME: VESSEL QUANTITY: 1 PACKAGE SERIAL NO. (S): 12-052-01
 JOB NO.: 12-052 DRAWN BY: D. BRYAN DATE: 09/14/12
 REV. NO.: 1 PAGE NO.: 1 OF 1 SCALE: 1/2"=1'-0" DRAWING NO.: 12-052-VESSEL