

THE INFORMATION CONTAINED HEREIN IS THE CONFIDENTIAL PROPERTY OF TOROMONT PROCESS SYSTEMS AND IS NOT FOR PUBLICATION, AND NO PART THEREOF SHALL BE COPIED OR COMMUNICATED TO A THIRD PARTY WITHOUT AUTHORIZATION FROM TOROMONT PROCESS SYSTEMS.

**SKID GENERAL NOTES:**

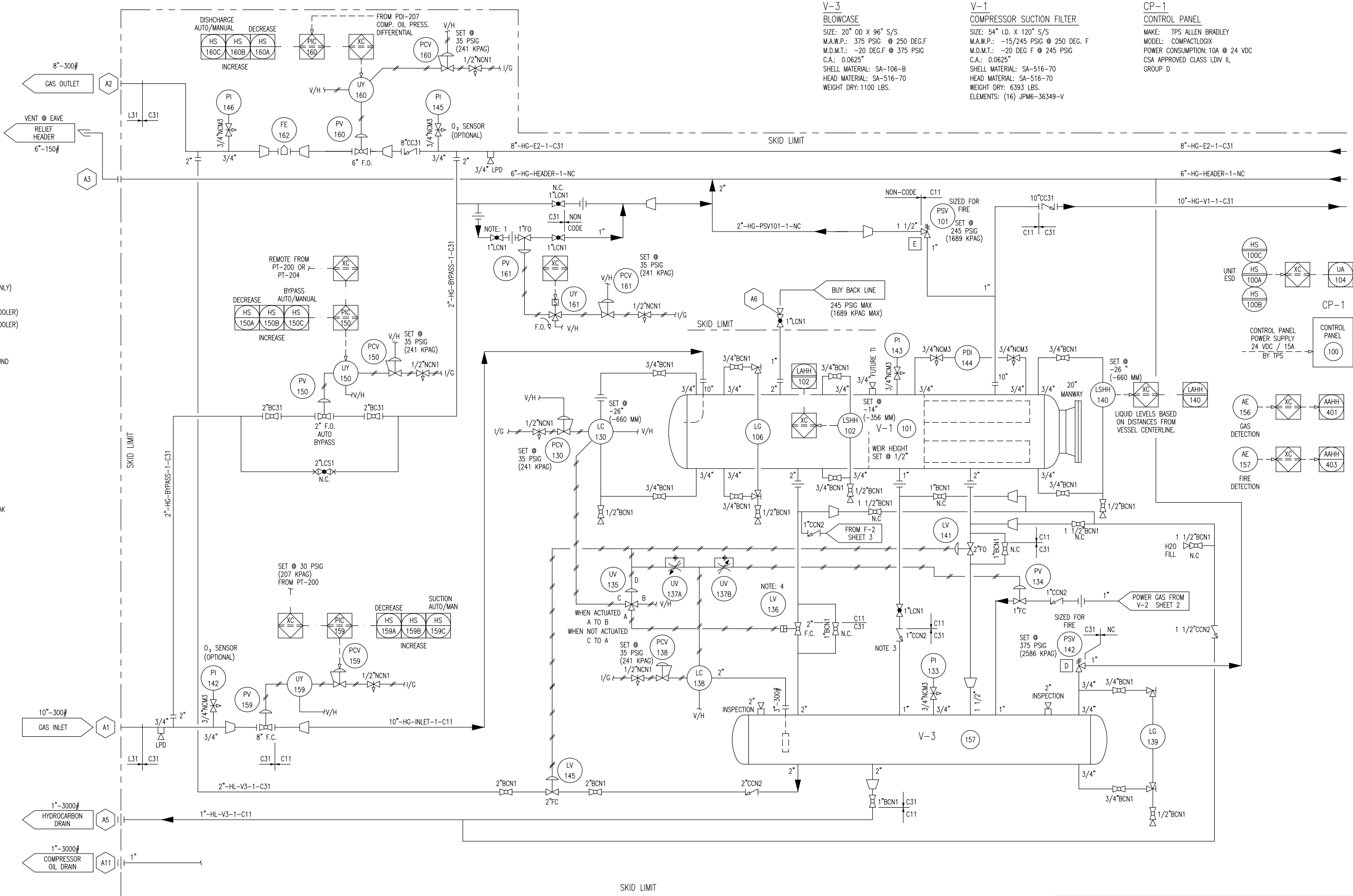
- LSD: 13-30-34-22 W4M
- ELECTRICAL CLASSIFICATION: CLASS 1, DIV. II, GROUP D
- MINIMUM DESIGN INDOOR TEMPERATURE: 60 DEG.F
- MAXIMUM DESIGN AMBIENT TEMPERATURE: 97 DEG.F
- START GAS CONSUMPTION 1391 SCFM @ 60 PSIG
- 2028 SCFM @ 90 PSIG
- INSTRUMENT GAS CONSUMPTION: 500 SCFH
- ATMOSPHERIC PRESSURE: 13.4 PSIA
- ELEVATION: 2500 FT. DESIGN
- EXHAUST STACK 1.2 TIMES PEAK HEIGHT

**FLUID VOLUMES**

- FLUID VOLUMES BASED ON DAY TANKS 1/2 FULL
- COMPRESSOR SYSTEM OIL CHARGE: 225 USGAL
  - COMPRESSOR OIL TYPE: S5-100
  - ENGINE OIL CHARGE: 197 USGAL (106 USGAL ENGINE ONLY)
  - ENGINE OIL TYPE: SAE40
  - ENGINE JACKET COOLANT CAPACITY: 180 USGAL (INCL. COOLER)
  - ENGINE TURBO COOLANT CAPACITY: 240 USGAL (INCL. COOLER)
  - ENGINE COOLANT: 50/50 ETHYLENE GLYCOL
  - FUEL GAS CONSUMPTION: 9478 SCFH @ 1150 BHP
  - GEAR BOX OIL TYPE: CHEVRON E.P. ISO 150 GEAR COMPOUND
  - GEAR BOX OIL CAPACITY: 15 USGAL

**CUSTOMER INTERFACE**

- OUTPUTS TO CUSTOMER:  
RUN STATUS CONTACTS
- INSTRUMENTATION NOTE:**
- ALL TUBING SIZE ON SIZE UNLESS INDICATED OTHERWISE
  - MINIMUM 3/8"
  - ALL TUBING TO BE 316SS SEAMLESS
  - JET LUBE TFE-15 AND TEFLON TAPE TO BE USED, NO SWAK



NOTE: 1 ADJUST VALVE TO CONTROL BLOWDOWN RATE

NOTE: 3 INSTALL CHECK AS LOW AS POSSIBLE

NOTE: 4 LOCATE VALVE AS CLOSE TO BLOWCASE AS POSSIBLE

REV.	DESCRIPTION	DATE	BY	APPR.
2	AS-BUILT	DEC 28/04	CD	GM
1	ISSUED FOR CONSTRUCTION	NOV 8/04	CD	GM

PERMIT TO PRACTICE STAMP

ENGINEER STAMP

		<b>TITLE:</b> P & I FLOW DIAGRAM	
<b>DRAWN BY:</b> C. DAVIDSON	<b>DATE:</b> OCT 07/04	<b>FOR:</b> HUSKY ENERGY 1150 HP TD5H-355L BOOSTER COMPRESSOR K-700	
<b>CHKD. BY:</b> G. MORRIS	<b>SCALE:</b> NTS	<b>W.D. No.:</b> 11643101	
<b>APPR. BY:</b> G. MORRIS	<b>W.D. No.:</b> 11643101	<b>DWG. No.:</b> 11643-101	<b>SHEET No.:</b> 1 OF 4
<b>CUST. PO No.:</b> -	<b>REV.:</b> 2		

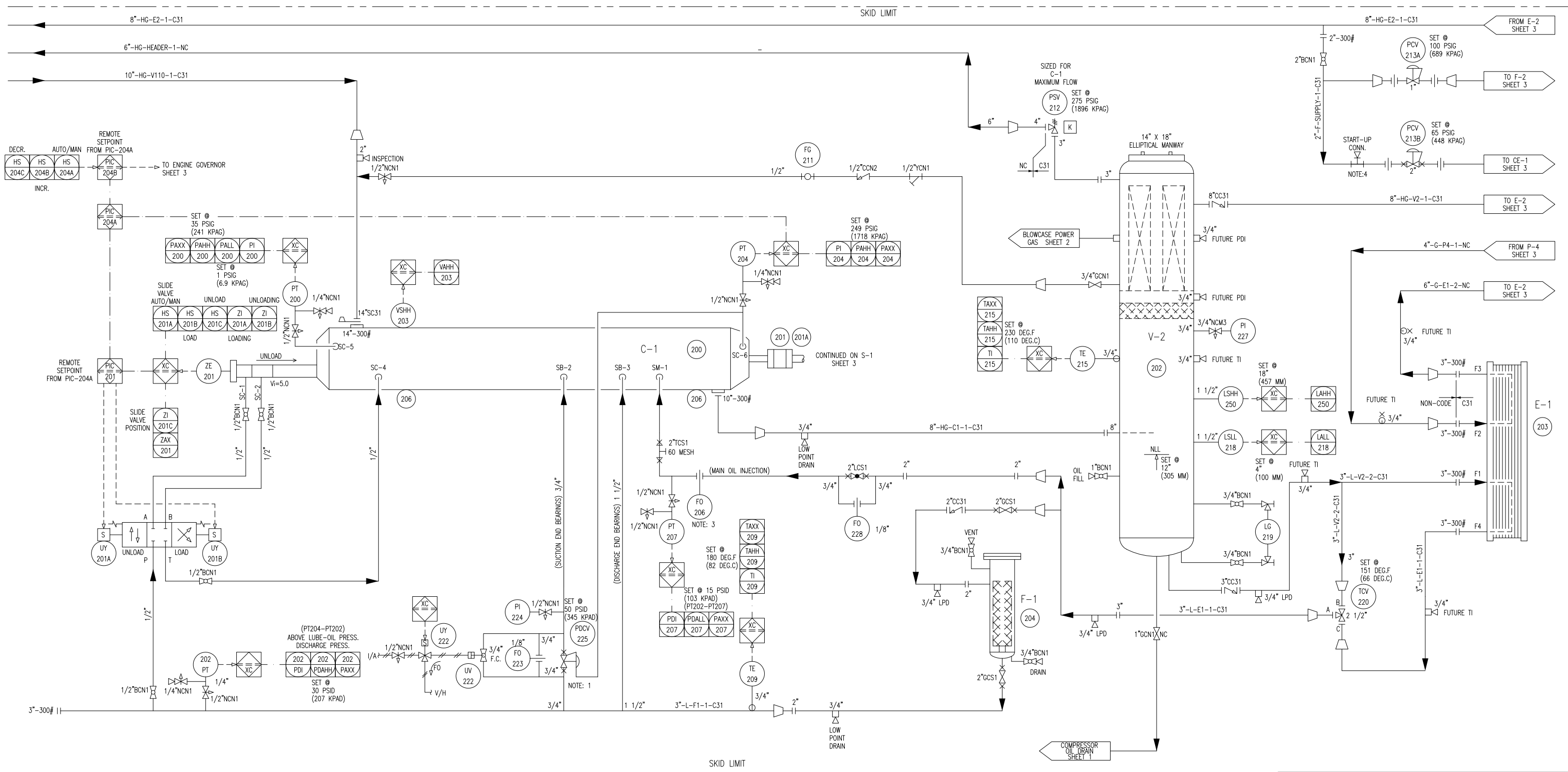
THE INFORMATION CONTAINED HEREIN IS THE CONFIDENTIAL PROPERTY OF TOROMONT PROCESS SYSTEMS AND IS NOT FOR PUBLICATION, AND NO PART THEREOF SHALL BE COPIED OR COMMUNICATED TO A THIRD PARTY WITHOUT AUTHORIZATION FROM TOROMONT PROCESS SYSTEMS.

**C-1  
GAS COMPRESSOR**  
FRICK: TDSH-355L  
OPERATING SPEED: 3344 RPM  
DESIGN SUCTION PRESSURE: SEE CURVES  
DESIGN DISCHARGE PRESSURE: SEE CURVES  
OIL TEMPERATURE: 160 DEG F.  
POWER DRAW: SEE CURVES  
WEIGHT DRY: 3740 LBS

**F-1  
OIL FILTER**  
SIZE: 8 5/8" O.D. X 26" S/F  
MAWP: 400 PSIG @ 250 DEG.F  
MDMT: -20 DEG.F @ 400 PSIG  
CA: 0.0625"  
SHELL MATERIAL: SA-106B  
HEAD MATERIAL: SA-516-70  
ELEMENT: MODEL 1833C05 5 MICRON  
WEIGHT DRY: 275 LBS.

**V-2  
OIL SEPARATOR**  
SIZE: 48" I.D. X 102" S/S  
MAWP: 350 PSIG @ 250 DEG.F  
MDMT: -20 DEG.F @ 350 PSIG  
CA: 0.0625"  
SHELL MATERIAL: SA-516-70  
HEAD MATERIAL: SA-516-70  
ELEMENT: (7) RSC1175-3  
WEIGHT: 6520 LBS.

**E-1  
OIL COOLER**  
MODEL: VXM-46-SS-FS-1-150  
PLATES: 145  
MAWP OIL SIDE: 400 PSIG @ 250 DEG.F  
MAWP GLYCOL SIDE: 400 PSIG @ 250 DEG.F  
DESIGN DUTY: 2566873 BTU/HR  
SURFACE AREA: 708 SQ.FT  
WEIGHT: 3217 LBS.



NOTE:1 BLOCK INTERNAL PORT ON PDCV-225  
NOTE:3 ORIFICE SUPPLIED WITH COMPRESSOR  
NOTE:4 START UP TO BE 1 1/2" CONNECTION

REV.	DESCRIPTION	DATE	BY	APPR.
2	AS-BUILT	DEC 28/04	CD	GM
1	ISSUED FOR CONSTRUCTION	NOV 8/04	CD	GM

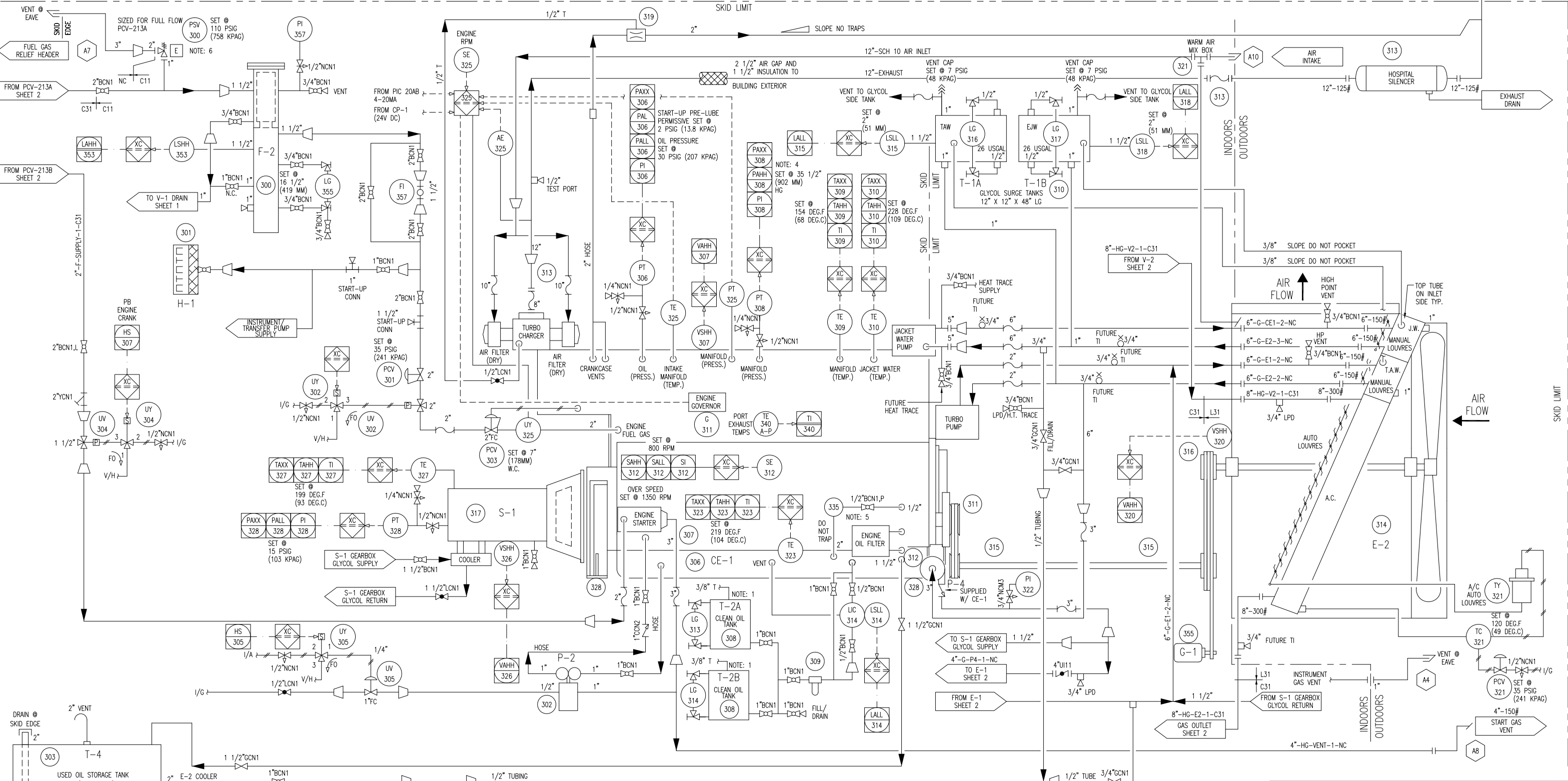
PERMIT TO PRACTICE STAMP  
ENGINEER STAMP

TOROMONT  
TOROMONT PROCESS SYSTEMS

TITLE: P & I FLOW DIAGRAM  
FOR: HUSKY ENERGY  
1150 HP TDSH-355L  
BOOSTER COMPRESSOR  
K-700  
DRAWN BY: C. DAVIDSON  
DATE: OCT 07/04  
CHKD. BY: G. MORRIS  
SCALE: NTS  
APPR. BY: G. MORRIS  
W.O. No: 11643101  
CUST. PO No: -  
DWG. No: 11643-101  
SHEET No: 2 OF 4  
REV: 2

THE INFORMATION CONTAINED HEREIN IS THE CONFIDENTIAL PROPERTY OF TOROMONT PROCESS SYSTEMS AND IS NOT FOR PUBLICATION, AND NO PART THEREOF SHALL BE COPIED OR COMMUNICATED TO A THIRD PARTY WITHOUT AUTHORIZATION FROM TOROMONT PROCESS SYSTEMS.

<b>H-1</b> <b>BUILDING HEATER</b> CATADYNE MODEL: WX 24 X 48 12 VDC STARTER OUTPUT: 32000 BTU/HR C/W PRESSURE REGULATOR THERMOSTAT AND SAFETY SHUT OFF WEIGHT: 100 LBS	<b>F-2</b> <b>FUEL GAS SCRUBBER</b> SIZE: 6 5/8" OD X 48 1/2" S/F MAMP: 245 PSIG @ 250 DEG.F SHELL MATERIAL: SA-106B ELEMENT: PECO FG-312 WEIGHT: 285 LBS	<b>P-5</b> <b>GLYCOL TRANSFER PUMP</b> MAKE: WARREN RUPP MODEL: G05B1ABTXNSX00 INLET GAS PRESS.: 100 PSIG MAX FLOW: 5 GPM @ 20 PSIG FLUID: 50/50 GLYCOL WEIGHT: 15 LBS	<b>S-1</b> <b>SPEED INCREASER</b> MAKE: PACIFIC RIM MODEL: EMPB 0800B-DDI RATIO: 1: 2.786 INPUT: 1200 RPM OUTPUT: 3344 RPM SAE "00" BELLOUSING WEIGHT: 3000 LBS	<b>P-2</b> <b>ENGINE PRE-LUBE PUMP</b> MAKE: WARREN RUPP MODEL: G1FB1ABTXNSX00 INLET GAS PRESSURE: 100 PSIG MAX. FLOW: 25 GPM @ 20 PSIG FLUID: SAE-40 LUBE OIL WEIGHT: 28 LBS	<b>CE-1</b> <b>NATURAL GAS ENGINE</b> TYPE: CATERPILLAR 3516 AFRC BORE: 6.7" STROKE: 7.5" DISPLACEMENT: 4211 CU. IN. COMPRESSION RATIO: 8 : 1 BHP (RATED): 1150 HP @ 1200 RPM WEIGHT: 17670 LBS	<b>P-4</b> <b>GLYCOL CIRCULATION PUMP</b> MAKE: CATERPILLAR MODEL: BN8465 PRESSURE: 40 FT HEAD FLOW: 200 GPM FLUID: 50/50 GLYCOL OPERATING SPEED: 2254 RPM	<b>G-1</b> <b>GENERATOR</b> MAKE: MPI MODEL: HOLLEY OUTPUT: 60 AMPS VOLTAGE: 24VDC	<b>E-2</b> <b>COMPRESSOR AFTERCOOLER/OIL COOLER/GLYCOL COOLER</b> TYPE: AIR-X CHANGER MODEL: 144EH-106-22 AFTERCOOLER COIL: MAMP: 350 PSIG @ 350 DEG.F DUTY: 679506 Btu/HR FAN: MOORE MODEL: 10K-60HD FAN SPEED: 260 RPM TOTAL AIR FLOW: 203780 scfm POWER DRAW: 54 HP DESIGN AMBIENT: 100 DEG.F WEIGHT: 18700 LBS. GLYCOL COIL: MAMP: 14 PSIG @ 300 DEG.F DUTY: 2537069 Btu/HR GLYCOL COIL: MAMP: 14 PSIG @ 300 DEG.F DUTY: 3259301 Btu/HR
--	---	---	---	--	---	---	---	---



- NOTE: 1 CLEAN OIL TANKS VENTED TO USED OIL TANK.  
 NOTE: 2 SET POINTS WILL VARY WITH SITE CONDITIONS.  
 NOTE: 3 MOUNT ARRANGEMENT AS CLOSE AS POSSIBLE TO PUMP DISCHARGE.  
 NOTE: 4 SET POINT DEPENDS ON SITE CONDITIONS  
 NOTE: 5 SUPPLY SHOULD BE AS CLOSE TO PUMP DISCHARGE AS POSSIBLE, UP STREAM OF OIL FILTERS.  
 OIL RETURN PORT MUST ENTER C.C. ABOVE OIL LEVEL.  
 NOTE: 6 SYSTEM MAMP IS 245 PSIG, PSV SET @ 110 PSIG.

REV.	DESCRIPTION	DATE	BY	APPR.
2	AS-BUILT	DEC 28/04	CD	GM
1	ISSUED FOR CONSTRUCTION	NOV 8/04	CD	GM

PERMIT TO PRACTICE STAMP

ENGINEER STAMP

		TITLE: P & I FLOW DIAGRAM	
DRAWN BY: C. DAVIDSON	DATE: OCT 07/04	FOR: HUSKY ENERGY 1150 HP TDSh-355L BOOSTER COMPRESSOR K-700	
CHKD. BY: G. MORRIS	SCALE: NTS	W.D. No.: 11643101	
APPR. BY: G. MORRIS	W.D. No.: 11643101	SHEET No.: 3 OF 4	
CUST. PO No.:	DWG. No.: 11643-101	REV: 2	

THE INFORMATION CONTAINED HEREIN IS THE CONFIDENTIAL PROPERTY OF TOROMONT PROCESS SYSTEMS AND IS NOT FOR PUBLICATION, AND NO PART THEREOF SHALL BE COPIED OR COMMUNICATED TO A THIRD PARTY WITHOUT AUTHORIZATION FROM TOROMONT PROCESS SYSTEMS.

**LINE IDENTIFICATION**

A-B-CD-E-FGH-I,J,I

A : NOMINAL LINE SIZE IN INCHES

B : FLUID  
 CW COOLING WATER IA INSTR. AIR SUPPLY  
 F FUEL GAS IG INSTR. GAS SUPPLY  
 G GLYCOL L LUBE OIL (COMPRESSOR)  
 HG HYDROCARBON GAS V PRODUCED/PROCESS WATER  
 HL HYDROCARBON LIQUID

C : EQUIPMENT TYPE  
 B BLOWER/FAN H HEATER  
 C COMPRESSOR P PUMP  
 E EXCHANGER T TANK  
 F FILTER V PRESSURE VESSEL

MODIFIER  
 E ENGINE  
 M MOTOR

D : EQUIPMENT NUMBER: 1 TO 999 SEQUENTIAL NUMBERS

E : LINE NUMBER: 1 TO 9 SEQUENTIAL NUMBERS FROM EQUIPMENT

FGH : PIPING SPECIFICATION

F : MATERIAL GROUP  
 C CARBON STEEL  
 L LOW TEMP. CARBON STEEL  
 S STAINLESS STEEL

G : ANSI 16.5 FLANGE CLASS  
 1 150# 9 900#  
 3 300# 15 1500#  
 6 600# 25 2500#

H : LINE MATERIAL SPECIFICATION REFERENCE: 1 TO 9 SEQUENTIAL NUMBERS

III : MODIFIER / GENERAL

H PLUS THICKNESS IN INCHES (HOT INSULATION)  
 C PLUS THICKNESS IN INCHES (COLD INSULATION)  
 PP PLUS THICKNESS IN INCHES (PERSONAL PROTECTION)  
 HT PLUS THICKNESS IN INCHES (HEAT TRACING)  
 ST STEAM TRACING  
 GT GLYCOL TRACING  
 ET ELECTRICAL TRACING

EXAMPLE: 3"-HG-V1-2-C11-HT1", ET  
 3" - LINE SIZE  
 HG - HYDROCARBON GAS  
 V1 - VESSEL  
 2 - SECOND LINE FROM VESSEL  
 C11 - CARBON STEEL LINE  
 1 150# ANSI FLANGE RATING  
 1 LINE MATERIAL SPECIFICATION REFERENCE  
 HT1" - HEAT TRACING INSULATION 1" THICK  
 ET - ELECTRIC TRACING

**VALVE IDENTIFICATION**

A"BCDE,F

A : NOMINAL VALVE SIZE IN INCHES

B : TYPE  
 A ANGLE GLOBE N NEEDLE  
 B BALL P PLUG  
 C CHECK S START-UP STRAINER  
 G GATE T TEE STRAINER  
 L GLOBE Y Y-STRAINER  
 M MANIFOLD U BUTTERFLY

C : BODY MATERIAL  
 B BRONZE L LOW TEMP. CARBON STEEL  
 C CARBON STEEL S STAINLESS STEEL  
 I CAST IRON

D : END CONNECTIONS  
 1 FLANGED 150# B BUTT WELD  
 3 FLANGED 300# C SW BY NPT  
 6 FLANGED 600# F NPT BY FLANGE (MANIFOLD)  
 9 FLANGED 900# N NPT (THREADED)  
 15 FLANGED 1500# M NPT MALE BY NPT FEMALE  
 25 FLANGED 2500# S SW (SOCKETWELD)  
 T TUBE (SWAGELOCK)

E : IDENTIFIER - NUMBER USED TO SPECIFY VALVE REFER TO VALVE DATA SHEETS

F : MODIFIER

C CHAIN OPERATOR O OXYGEN SERVICE/CLEANING  
 E EXTENDED BONNET P FULL PORT DESIGN  
 G GEAR OPERATOR R RTJ FLANGED  
 L LOCKING DEVICE S SPRING HANDLE (CLOSE)  
 N NACE TRIM X SPECIAL SPECIFICATIONS

EXAMPLE: 6"GC11,C  
 6" VALVE SIZE 1 150#  
 G GATE 1 API-600  
 C CARBON STEEL C CHAIN OPERATOR

**VALVES**

- ANGLE GLOBE VALVE
- BALL VALVE
- BUTTERFLY VALVE
- CHECK VALVE
- GATE VALVE
- GLOBE VALVE
- NEEDLE VALVE
- PLUG VALVE
- 3-WAY VALVE
- 4-WAY VALVE
- START-UP STRAINER
- TEE STRAINER
- Y-STRAINER

**VALVE CONNECTIONS**

- THREADED
- WELDED (BUTT OR SOCKET)
- THREADED BY WELDED
- FLANGED

**CONTROL VALVES**

- POSITIONER DIAPHRAGM CONTROL VALVE
- OUTLET PRESSURE REGULATOR (SELF-CONTAINED)
- INLET PRESSURE REGULATOR (SELF-CONTAINED)
- PRESSURE DIFFERENTIAL CONTROL VALVE (SELF-CONTAINED)
- TWO-WAY SOLENOID VALVE
- THREE-WAY SOLENOID VALVE
- MOTOR ACTUATOR
- HYDRAULIC / PNEUMATIC PISTON OPERATED
- VALVE W/ BLEED
- VALVE W/ PLUG
- PRESSURE SAFETY/RELIEF VALVE
- DESIGNATES ORIFICE LETTER (SIZE)

**MISCELLANEOUS**

- FLEXIBLE CONNECTION
- SPECTACLE BLIND (LINE OPEN)
- SPECTACLE BLIND (LINE CLOSED)
- FLOW GLASS
- RUPTURE DISC FOR PRESSURE RELIEF
- RUPTURE DISC FOR VACUUM RELIEF
- VORTEX BREAKER
- DIAPHRAGM SEAL
- CONTINUOUS LIQUID DRAINER OR STEAM TRAP
- SKID TIE-POINTS
- OPEN DRAIN
- INSULATION - (C) COLD (H) HOT (HT) HEAT TRACING (PP) PERSONAL PROTECTION
- ELECTRIC HEAT TRACE
- STEAM OR GLYCOL HEAT TRACE

**LINE CODE**

- PRIMARY PROCESS LINE
- SECONDARY PROCESS LINE
- INSTRUMENT PROCESS LINE (TUBING)
- BY OTHERS
- SKID LIMIT
- PNEUMATIC SIGNAL
- ELECTRIC SIGNAL
- CAPILLARY TUBING
- INSTRUMENT SYSTEM LINK (ELECTRONIC MEMORY SHARING)

		(MODIFIER)		INSTRUMENT IDENTIFICATION GENERAL REFERENCE (ISA - S5.1)											
		FIRST LETTER	SUCCEEDING LETTERS	PRIMARY ELEMENT	INDICATOR	RECORDER	CONTROLLER			TRANS-MITTER	CONTROL		CONTROL VALVE OR REGULATOR	SELF-ACTIVATED VALVE	RELAY OR CONVERTER
							BLIND	INDICATING	RECORDING		SWITCH	ALARM			
A	ANALYSIS		ALARM	AE	AI	AR	AC	AIC	ARC	AT	AS( )	AA( )	AV		AY
B	BURNER FLAME		USER'S CHOICE	BE	BI	BR	BC			BT	BS( )	BA( )	BV		BY
C	CONDUCTIVITY		CONTROL (CLOSE)	CE	CI	CR	CC	CIC	CRC	CT	CS( )	CA( )	CV		CY
D	DENSITY OR MASS (DIFFERENTIAL)			DE	DI	DR	DC	DIC	DRC	DT	DS( )	DA( )	DV		DY
E	VOLTAGE		PRIMARY ELEMENT	EE	EI	ER	EC	EIC	ERC	ET	ES( )	EA( )	EV		EY
F	FLOW (RATIO OR FRACTION)		SHUTDOWN FIRST OUT	FE	FI	FR	FC	FIC	FRC	FT	FS( )	FA( )	FV	FCV	FY
G	GAUGING		GLASS	GE	GI	GR	GC	GIC	GRC	GT	GS( )	GA( )	GV		
H	HAND		(HIGH)				HC	HIC	HRC	HT	HS( )		HV	HCV	HY
I	CURRENT		INDICATE	IE	II	IR	IC	IIC	IRC	IT	IS( )	IA( )			IY
J	POWER (SCAN)			JE	JI	JR	JC	JIC	JRC	JT	JS( )	JA( )			JY
K	TIME		CONTROL STATION		KI	KR	KC	KIC	KRC	KT	KS( )	KA( )			KY
L	LEVEL		LIGHT (LOW)	LE	LI	LR	LC	LIC	LRC	LT	LS( )	LA( )	LV	LCV	LY
M	MOISTURE, HUMIDITY		(MIDDLE OR INTERMEDIATE)	ME	MI	MR	MC	MIC	MRC	MT	MS( )	MA( )	MV		MY
N	USER'S CHOICE														
O	POINT		ORIFICE (OPEN)												
P	PRESSURE OR VACUUM		POINT	PE	PI	PR	PC	PIC	PRC	PT	PS( )	PA( )	PV	PCV	PY
Q	QUANTITY OR EVENT (INTEGRATE/TOTALIZE)				QI	QR	QC	QIC	QRC	QT	QS( )	QA( )	QV		QY
R	RADIOACTIVITY		RECORD OR PRINT	RE	RI	RR	RC	RIC	RRC	RT	RS( )	RA( )			RY
S	SPEED OR FREQUENCY		SWITCH		SI	SR	SC	SIC	SRC	ST	SS( )	SA( )			SY
T	TEMPERATURE		TRANSMIT	TE	TI	TR	TC	TIC	TRC	TT	TS( )	TA( )	TV	TCV	TY
U	MULTI-VARIABLE		MULTIFUNCTION		UI	UR	UC	UIC	URC				UV		UY
V	VIBRATION		VALVE OR DAMPER	VE	VI	VR	VC	VIC	VRC	VT	VS( )	VA( )	VV		VY
W	WEIGHT OR FORCE		WELL	WE	WI	WR	WC	WIC	WRC	WT	WS( )	WA( )	WV		WY
X	UNCLASSIFIED		UNCLASSIFIED (DIAGNOSTIC)	XE	XI	XR	XC	XIC	XRC	XT	XS( )	XA( )	XV		XY
Y	USER'S CHOICE		RELAY OR COMPUTE												YY
Z	POSITION		DRIVE OR ACTUATE	ZE	ZI	ZR	ZC	ZIC	ZRC	ZT	ZS( )	ZA( )			ZY

(C) -CLOSE (O) -OPEN (xx)-DIAGNOSTIC SHUTDOWN (USED TO INDICATE THE DIAGNOSTIC CHECK REQ'D ON THE ANALOG INPUT)  
 (H) -HIGH ALARM (L) -LOW ALARM  
 (HH)-HIGH SHUTDOWN (LL)-LOW SHUTDOWN

**INSTRUMENTS**

- THERMOWELL (THREADED)
- THERMOWELL (WELDED)
- LOCAL MOUNTED
- LOCAL PANEL MOUNTED
- MOUNTED BEHIND OR IN LOCAL PANEL
- MAIN PANEL MOUNTED
- MOUNTED BEHIND OR IN MAIN PANEL
- MAN / MACHINE INTERFACE IN MAIN PANEL
- PILOT LIGHT \* COLOUR- (A) AMBER (G) GREEN (R) RED (B) BLUE (O) ORANGE (W) WHITE
- RELAY OR CONVERTER \* FOR INPUT/OUTPUT SEQUENCES DESIGNATION: SIGNAL:  
 E VOLTAGE  
 H HYDRAULIC  
 I CURRENT (ELECTRICAL)  
 O ELECTROMAGNETIC OR SONIC  
 P PNEUMATIC  
 R RESISTANCE (ELECTRICAL)
- PROGRAMMABLE LOGIC CONTROLLER (PLC) XC REPRESENTS GENERAL LOGIC  
 X = PLC NUMBER  
 Y = PLC RACK NUMBER  
 THE ABOVE IDENTIFICATION NUMBER WILL BE USED TO REFERENCE THE CONTROL PANELS.
- INTERLOCK
- ELECTRICAL (HARD WIRE) INTERLOCK

**ABBREVIATIONS**

- AOUT AUTOMATIC OUTPUT
- CA CORROSION ALLOWANCE
- CHO CHAIN OPERATED
- CUST CUSTOMER
- DIR DIRECT ACTING
- DB DEADBAND
- Δ DELTA (DIFFERENTIAL)
- ESD EMERGENCY SHUTDOWN
- FC FAIL CLOSED
- FO FAIL OPEN
- FLP FAIL LAST POSITION
- GAIN GAIN
- HI HIGH
- HS HAND SWITCH
- HTR HEATER
- I/A INSTRUMENT AIR SUPPLY
- I/G INSTRUMENT GAS SUPPLY
- I/O INPUT / OUTPUT
- LB/HR POUNDS PER HOUR
- FT3/DAY CUBIC FEET PER DAY
- FT3/HR CUBIC FEET PER HOUR
- FT3/MIN CUBIC FEET PER MINUTE
- LC LOCKED CLOSED
- LO LOCKED OPEN
- MAX MAXIMUM
- MAWP MAXIMUM ALLOWABLE WORKING PRESSURE
- MDMT MINIMUM DESIGN METAL TEMPERATURE
- MIN MINIMUM
- MCC MOTOR CONTROL CENTER
- MOUT MANUAL OUTPUT
- MS MOTOR STARTER
- NC NORMALLY CLOSED
- NLL NORMAL LIQUID LEVEL
- NO NORMALLY OPEN
- MMI MAN / MACHINE INTERFACE
- PB PUSH BUTTON
- PL PILOT LIGHT
- PLC PROGRAMMABLE LOGIC CONTROLLER
- REV REVERSE ACTING
- RST RESET (INTEGRAL)
- SCR SILICON CONTROLLED RECTIFIER
- SEAM TO FACE OF FLANGE
- SP SETPOINT
- SPC CALCULATED SETPOINT
- SS SELECTOR SWITCH
- S/S SEAM TO SEAM
- T/T TANGENT TO TANGENT
- TS/TS TUBESHEET TO TUBESHEET
- T/L TUBE LENGTH
- V/H VENT HEADER

**GENERAL NOTES**

- TUBING TO BE 304SS, SEAMLESS. 0.035" WALL THICKNESS, CADMIUM PLATED CARBON STEEL FITTINGS WITH STAINLESS STEEL FERRULES.
- ALL TEMPERATURE INSTRUMENTS TO BE PROVIDED WITH A THERMOWELL.

		TITLE: P & I FLOW DIAGRAM	
DRAWN BY: C. DAVIDSON DATE: OCT 07/04	CHKD. BY: G. MORRIS SCALE: NTS	FOR: HUSKY ENERGY 1150 HP TDSH-355L BOOSTER COMPRESSOR K-700	
APPR. BY: G. MORRIS W.O. No.: 11643101	PERMIT TO PRACTICE STAMP	ENGINEER STAMP	DWG. No.: 11643-101
CUST. PO No.: -	SHEET No.: 4 OF 4	REV: 2	REV. 2

REV.	DESCRIPTION	DATE	BY	APPR.
2	AS-BUILT	DEC 28/04	CD	GM
1	ISSUED FOR CONSTRUCTION	NOV 8/04	CD	GM

TPS DATE: OCT 15, 2004 TIME: 11:56 AM