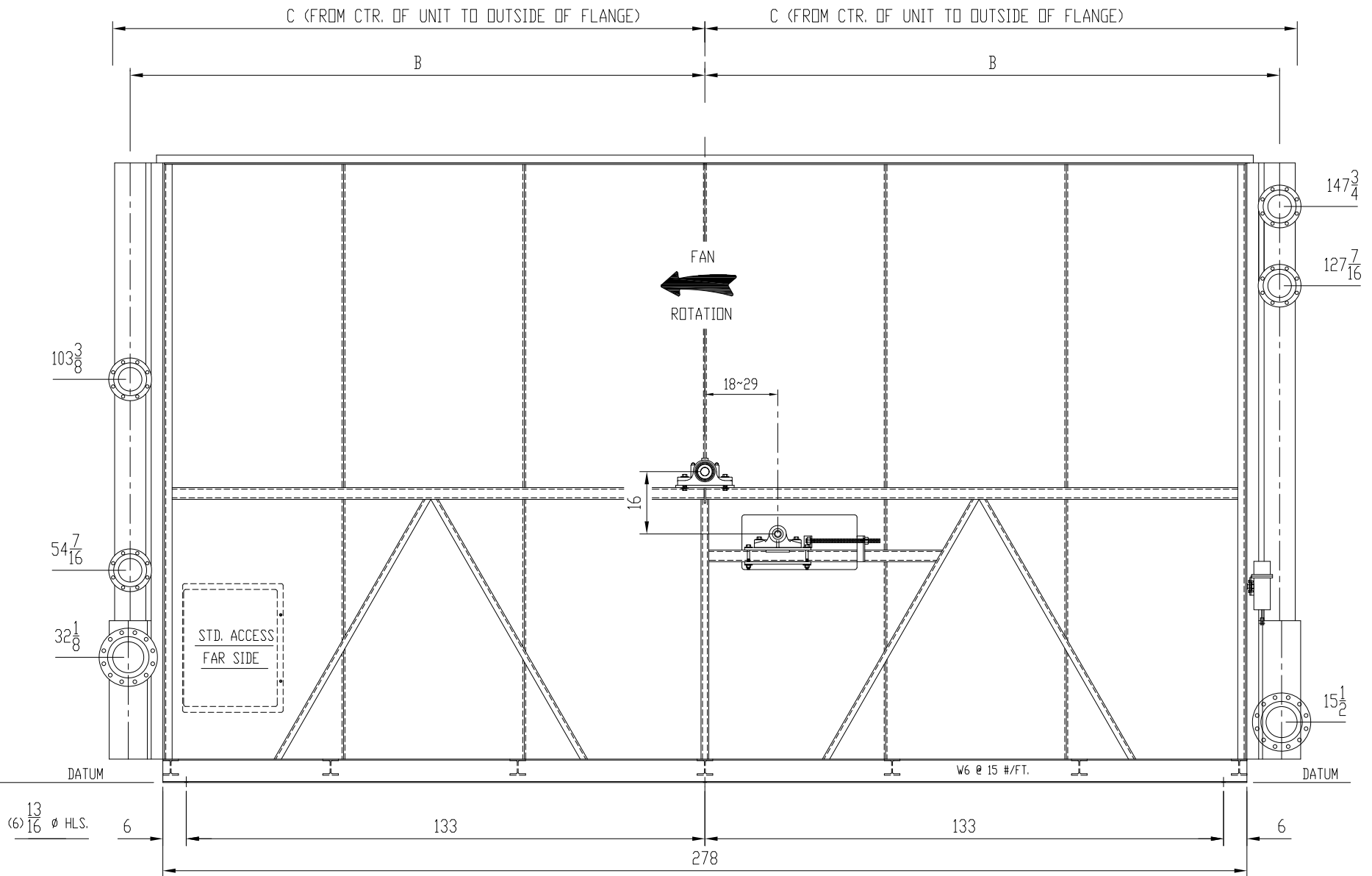
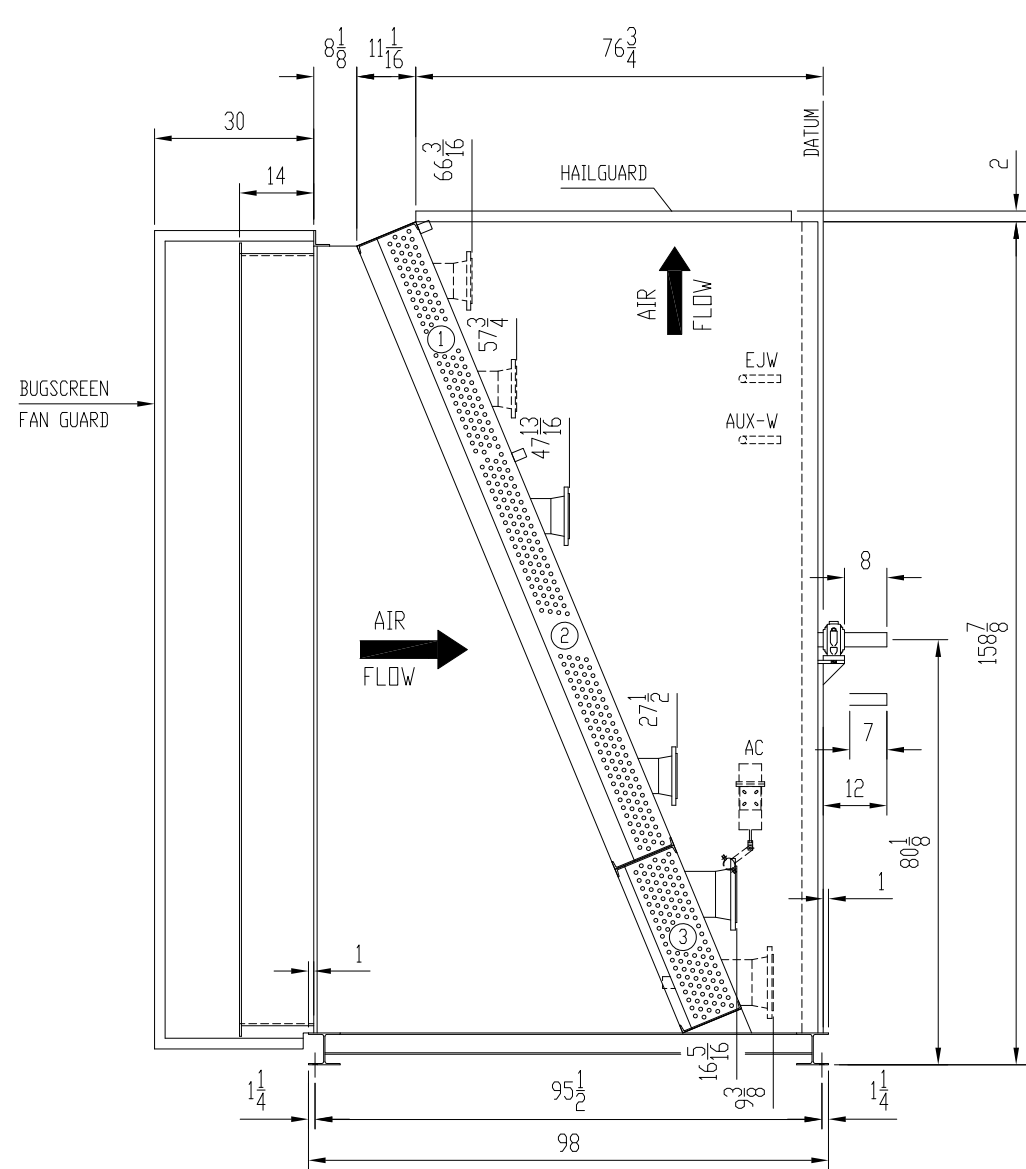


ITEM	SERVICE	MAWP	CODE	NOZZLES		COUPLINGS	REF. DIMENSIONS		LOUVERS	BUG SCREEN	DRIVE	FAN	FINISH
				INLET	OUTLET		VENT/TEMP	B					
1	EJW (COMBINED) 62.5 GALS	14 PSI @ 300/-20°F	NONE	6-150 RFWN	6-150 RFWN	1-3000	147.375	152.875	MANUAL	YES HARD PANELS	ENGINE DRIVE SHEAVES, BELTS, AND GUARDS BY OTHERS Ø2.1875 IDLER SHAFT WITH .5 x .25 KWY (WITH ENCLOSURE)	144Ø MOORE 10K, 60, VT,HD 10 BLADE, 13 PA LH ROTATION 259 RPM @ 55.1 HP REQ'D Ø2.9375 BORE WITH .75 x .375 KWY.	STRUCTURE STD. PRIMER W/ ANCHOR B9942 ENCANA TAUPE ENAMEL TOP COAT HAIL GUARD BUG FRAME HOT DIP GALV.
2	AUX-W (COMBINED) 104 GALS	14 PSI @ 300/-20°F	NONE	6-150 RFWN	6-150 RFWN	1-3000	147.375	152.875	MANUAL				
3	AC	350 PSI @ 300/-50°F	ASME	8-300 RFWN	8-300 RFWN	1-6000	147.875	155.375	AUTO				



RELEASED
FABRICATION OF THIS
ORDER HAS BEGUN

REV	REVISION DESCRIPTION	BY	CK	APP	DATE	APPD:	DATE:
1	ADDED TOP COAT PAINT COLOR	S.Y.	M.B.		11/15/04	CK: M.B.	DATE: 10/27/04

FOR: TOROMONT PROCESS
P.O. NO: 180528
CUST. TAG: 11643
USER: HUSKY
JOB SITE: AB, BC, SK, CANADA
JOB NO: 47404
WORK ORDER NO.: 10330
DR: LES DATE: 10/27/04
CK: M.B. DATE: 10/27/04

ESTIMATED DRY WEIGHT 24,200#

air-x-hemphill
TULSA, OKLAHOMA

CERTIFIED DRAWING
MODEL 144EF-102-24 QUANTITY: 1

CERTIFIED	DRAWING NUMBER 47404-CRT
DATE: 10/27/04	SCALE: FULL
	REV 1