

REVISION HISTORY					
REV	DATE	BY	CHK	DR	DESCRIPTION
A	01/18/03	JG	DK	N/A	INITIAL RELEASE
B	02/20/03	DK	DK	N/A	UPDATE DRAWING AS PER EX-1041

QTY	PART NUMBER	DESCRIPTION
1	202917-01	BRACKET ANCHOR REMOVABLE W/KEY
2	210983	BASE MOUNTING 1370 WIDE END, DRYER ELEC.
3	210927	PALETTE LOUVER ACROSS 57 IN WIDE
4	110336	PALETTE LOUVER ENCANA CORP.
5	138440	ANCHORING FRAMING RODS APPROX WALL ASM
6	117403	LABOR PPS 90 SA 1/2 2 0225W 3000F
7	201497	STEEL ANCHORS 2.00000000

- NOTES:
1. THE LOCATION OF THIS EQUIPMENT IS NOT NECESSARILY AS DEPICTED. THIS DRAWING IS NOT AN EXACT SPECIFICATION TO THE EQUIPMENT AND THE PACKAGE AS SPECIFIED IN THE INSTALLATION SECTION OF THE USER MANUAL.
  2. COMPRESSOR MUST BE LOCATED ON A FLAT AND LEVEL FOUNDATION.
  3. ANCHOR BRACKETS ARE PROVIDED TO SECURE UNITS TO ITS FOUNDATION. BEYOND RECOMMENDATION THAT ALL ANCHORS BE SET WITH THE EQUIPMENT IN PLACE. BEYOND RECOMMENDATION THAT ALL ANCHORS BE SET WITH THE EQUIPMENT IN PLACE. BEYOND RECOMMENDATION THAT ALL ANCHORS BE SET WITH THE EQUIPMENT IN PLACE.
  4. FASTENING METHODS FOR THE QUALITY OR STABILITY OF THE FOUNDATION. FASTENING METHODS FOR THE QUALITY OR STABILITY OF THE FOUNDATION. FASTENING METHODS FOR THE QUALITY OR STABILITY OF THE FOUNDATION.
  5. FEET FROM THE AIR INLETS OR OUTLETS SPACING. FEET FROM THE AIR INLETS OR OUTLETS SPACING. FEET FROM THE AIR INLETS OR OUTLETS SPACING.
  6. ELECTRICAL CLASSIFICATION INSIDE THE ENCLOSURE IS CLASS. ZONE 0. GROUP 0. IIA. ELECTRICAL CLASSIFICATION OUTSIDE THE ENCLOSURE IS TO FEET IS CLASS I, ZONE 1, GROUP 1B.

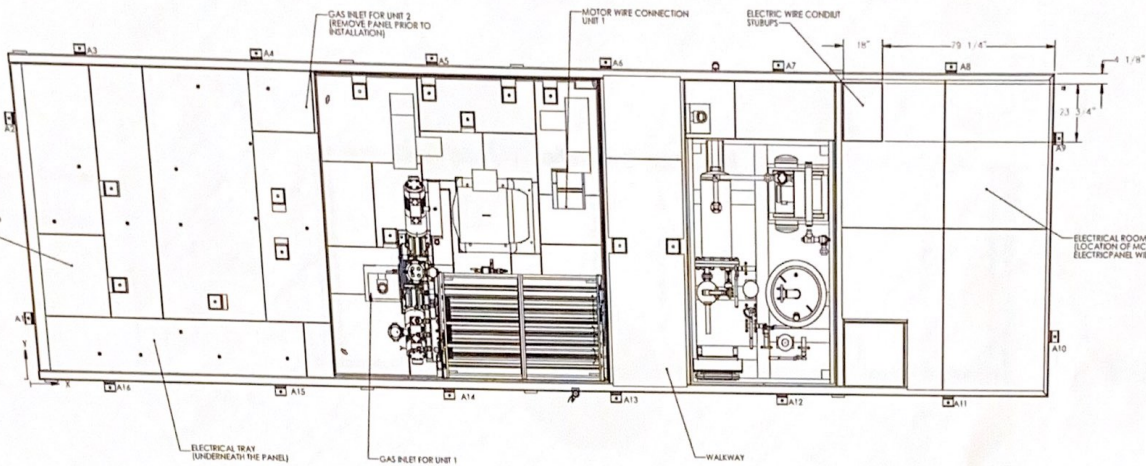
ENCANA IMW50-X4

REV: 1/18/03  
 DATE: 1/18/03  
 BY: JG  
 CHK: DK  
 DR: N/A

ENCANA  
 10000 N. 100th St.  
 Denver, CO 80261

3. ANY NEARBY LIVES, DEVICES OR OTHERS MUST BE PROTECTED FROM DAMAGE BY THE INSTALLATION OF THIS EQUIPMENT. PERMIT REQUIRED.

REVISION HISTORY				
REV	DATE	BY	CHK	DESCRIPTION
-	-	-	-	See Sheet



ELECTRICAL ROOM LOCATION OF SICC AND ELECTRIC PANEL WILL BE DETERMINED LATER

HOLE #	X	Y	SIZE
A1	13 1/2"	24 1/2"	
A2	13 1/2"	109 1/2"	
A3	36 7/8"	139 3/4"	
A4	114 7/8"	139 3/4"	
A5	136 7/8"	139 3/4"	
A6	276 7/8"	139 3/4"	
A7	356 7/8"	139 3/4"	
A8	436 7/8"	139 3/4"	
A9	497 1/8"	101 1/2"	
A10	497 1/8"	26 1/2"	
A11	436 7/8"	23 1/4"	
A12	356 7/8"	23 1/4"	
A13	276 7/8"	23 1/4"	
A14	196 7/8"	23 1/4"	
A15	116 7/8"	23 1/4"	
A16	36 7/8"	23 1/4"	

Ø 1" THRU ALL

ENCANA IMW50-X4

SCALE: 1/8" = 1'-0"

DATE: 2/20/08

BY: [Signature]

CHK: [Signature]

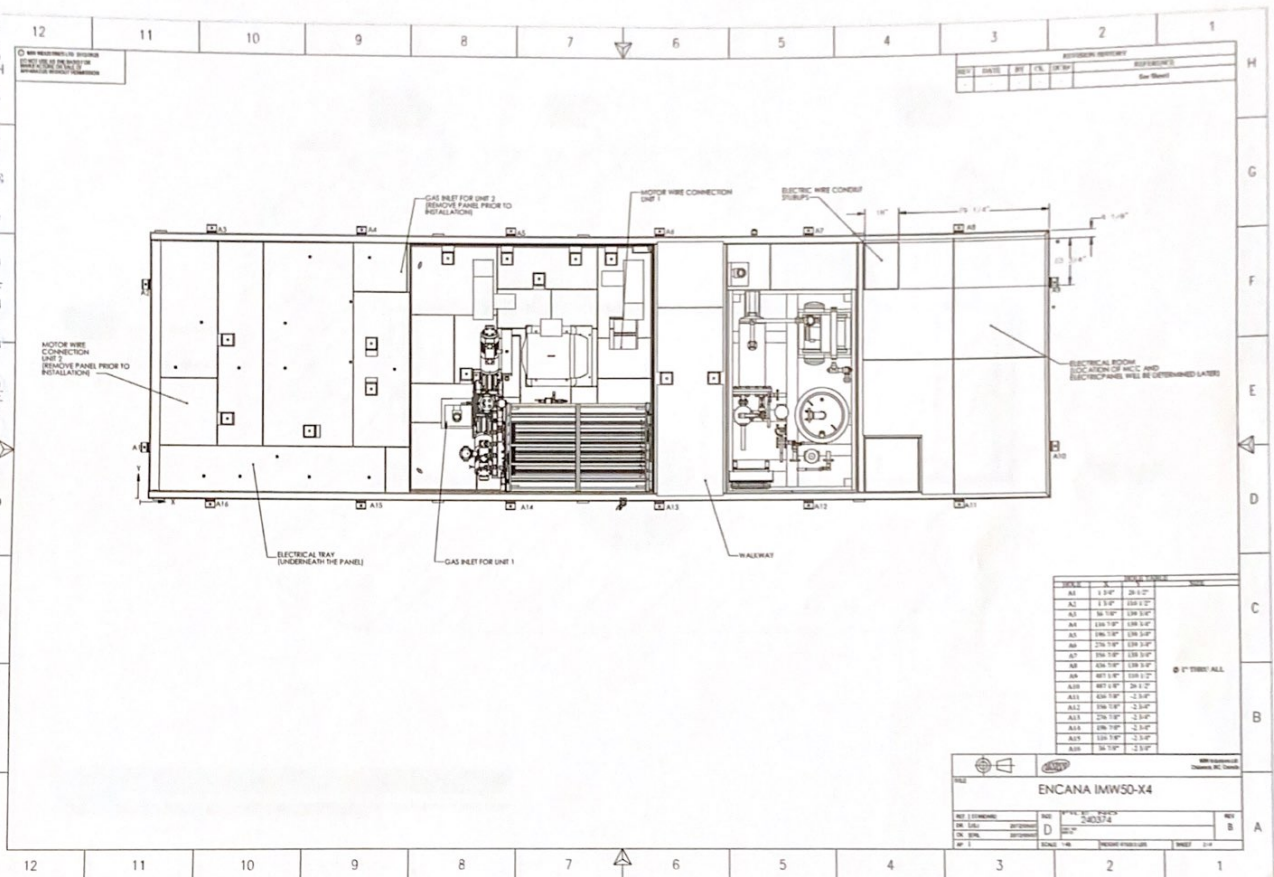
APP: [Signature]

REV: B

SHEET: 2/4

12 11 10 9 8 7 6 5 4 3 2 1





REVISION REPORT			
NO.	DATE	BY	CHK. BY

GRADE	IN.	FEET TO GRADE	MARK
A1	1.5"	28.47'	
A2	1.5"	10.07'	
A3	36.10"	1.04 1/2"	
A4	1.04 1/2"	1.04 1/2"	
A5	1.04 1/2"	1.04 1/2"	
A6	2.04 1/2"	1.04 1/2"	
A7	1.04 1/2"	1.04 1/2"	
A8	1.04 1/2"	1.04 1/2"	
A9	1.04 1/2"	1.04 1/2"	
A10	1.04 1/2"	1.04 1/2"	
A11	1.04 1/2"	1.04 1/2"	
A12	1.04 1/2"	1.04 1/2"	
A13	1.04 1/2"	1.04 1/2"	
A14	1.04 1/2"	1.04 1/2"	
A15	1.04 1/2"	1.04 1/2"	
A16	1.04 1/2"	1.04 1/2"	

ENCANA IMW50-X4

ENCANA

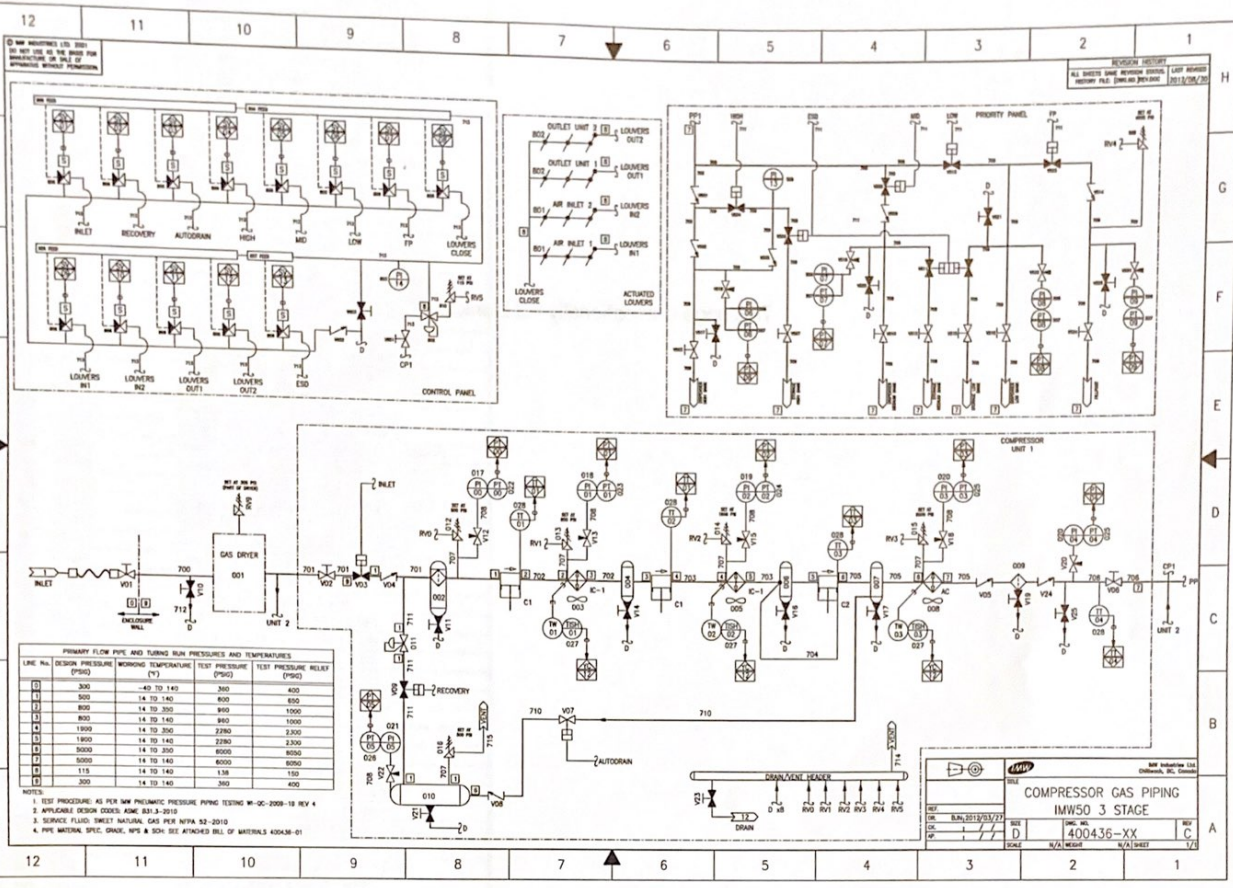
NO. 1 (REVISED)      NO. 2 (REVISED)      NO. 3 (REVISED)

DR. DATE:      DATE:      DATE:

BY:      BY:      BY:

DATE:      DATE:      DATE:

SCALE:      SHEET: 2 OF 4



PRIMARY FLOW PIPE AND TUBING RUN PRESSURES AND TEMPERATURES

LINE NO.	DESIGN PRESSURE (PSIG)	WORKING TEMPERATURE (°F)	TEST PRESSURE (PSIG)	TEST PRESSURE RELIEF (PSIG)
1	300	-40 TO 140	300	400
2	300	14 TO 140	600	600
3	800	14 TO 350	800	1000
4	800	14 TO 140	800	1000
5	1900	14 TO 350	2280	2300
6	1900	14 TO 140	2280	2300
7	3000	14 TO 350	6000	6000
8	5000	14 TO 140	6000	6000
9	118	14 TO 140	138	150
10	300	14 TO 140	300	400

NOTES:  
 1. TEST PROCEDURE AS PER API PNEUMATIC PRESSURE PIPING TESTING W-0C-2009-19 REV 4  
 2. APPLICABLE DESIGN CODES ASME B31.3-2010  
 3. SOURCE FLUID: LIQUET NATURAL GAS PER NTPA 52-2010  
 4. PIPE MATERIAL SPEC. GRADE, SIZE & JOIN. SEE ATTACHED BILL OF MATERIALS 400436-01

COMPRESSOR GAS PIPING  
 IMW50 3 STAGE

DATE: 10/12/17  
 DESIGNED BY: [Signature]  
 CHECKED BY: [Signature]  
 DRAWN BY: [Signature]