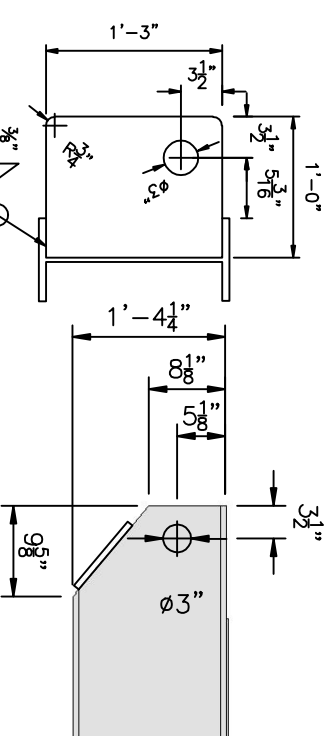
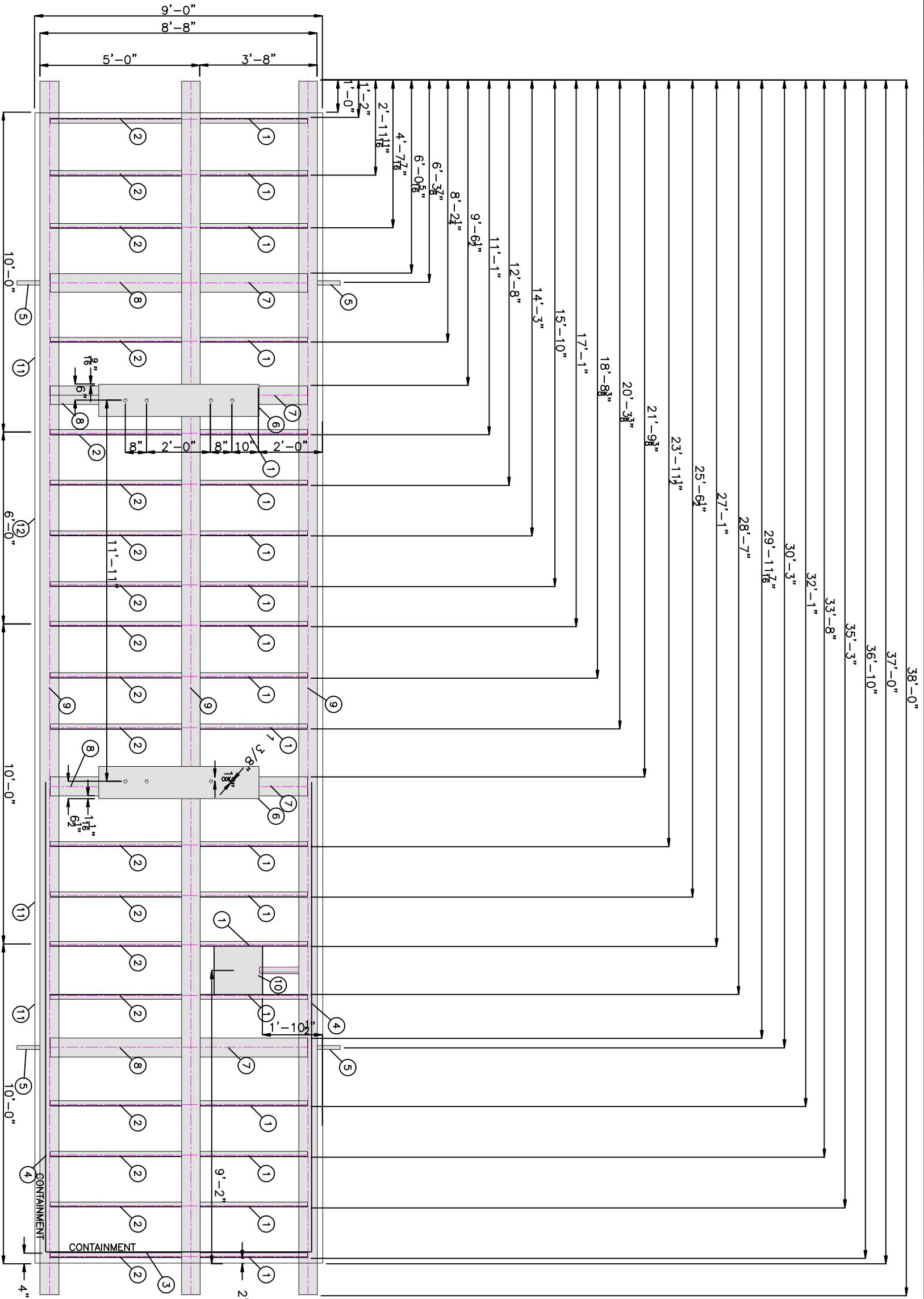


**BILL OF MATERIAL**

MARK	QTY	LONG ANNOTATION	LENGTH
1	19	CHANNEL: C6X8.2#	43 $\frac{3}{16}$ "
2	19	CHANNEL: C6X8.2#	52 $\frac{1}{2}$ "
3	1	FLATBAR: 2 x 1/4	99 $\frac{1}{2}$ "
4	2	FLATBAR: 2 x 1/4	176 $\frac{1}{2}$ "
5	4	PLATE-1 1/2"THK X 1'-3" X 1'	15"
6	2	PLATE-1/2"THK X 5' X 1'	60"
7	4	W16 x 50#	43 $\frac{3}{16}$ "
8	4	W16 x 50#	52 $\frac{1}{2}$ "
9	3	W16 x 50#	456"
10	1	18"DRAIN w/GRATING&24"-2"NPS PIPE	C.T.S PIPE
11	3	(2) 6"x $\frac{1}{4}$ "X18" FB, (1) 18"x18"x $\frac{1}{4}$ "PL	120"
12	1	CHECKERPLATE-3/16"THK X 9' X 6'	108"



**LIFT LUG DETAIL**

**DETAIL**

SCALE: 8:1

SCALE: 10:1

**NOTES**

- SHOP TO LOCATE CHECKERPLATE SEAMS OVER CHANNELS.
- DISTANCE BETWEEN INSIDES OF CHANNELS MAY NOT EXCEED 1'-6".
- ALL STEEL MINIMUM SA-36.
- FILLET WELDS ARE 1/4".
- CROSS MEMBERS ARE TO BE COPED TO MAINS AND FULLY WELDED.
- FULL PEN. WELDS ON FLANGE TO FLANGE WELDS.
- ALL CHECKERPLATE SEAMS ARE WELD DETAIL #2.
- DIMENSIONS FEET AND INCHES.
- SKID WEIGHT APPROX. 11400 LBS.
- APPROX. WEIGHT OF EMPTY PACKAGE 48803 LBS.
- LIFTING TO BE DONE BY LIFTING LUGS ONLY.
- END LOCATIONS TO BE USED FOR TOWING ONLY.
- MAN MEMBERS TO BE ONE SOLID PIECE AT 38'-0" LONG.
- SKID HAS BEEN DESIGNED FOR LIFT AT EMPTY PACKAGE WEIGHT ONLY.
- DEFLECTION OF SKID WHILE ON PILES AND AT FULL OPERATIONAL WEIGHT IS THE RESPONSIBILITY OF THE OWNER/OPERATOR.

APPROXIMATE WEIGHTS:  
 VESSEL WT.: 30203 LBS.  
 PIPING & COMP. WT.: 6000 LBS.  
 BUILDING WT.: 1200 LBS.  
 SKID WT.: 11400 LBS.

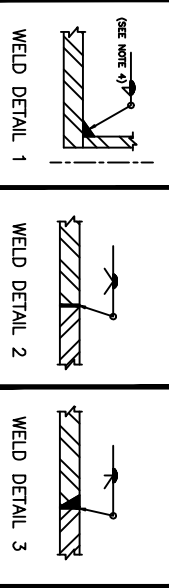


APACHE  
 CO CODE: APPROVER ID#:  
 LSD:

REV	REVISIONS	DATE	BY	CHK'D	APP'D	OWNER APP'D
2	AS BUILT	09-08-26	DF			
1	ADJUSTED NOTES, ADDED DETAILS	09-08-10	JS			
0	ISSUED FOR CONSTRUCTION	09-07-29	JS			

**PLAN VIEW**

SCALE: 20:1



DESIGNED	DESIGN	CHECKED	OWNER APP.
DESIGNED	DESIGN	CHECKED	OWNER APP.

THIS DRAWING IS THE PROPERTY OF PAINTEARTH ENERGY SERVICES. ANY UNAUTHORIZED USE OR REPRODUCTION OF THIS DESIGN OR DRAWING WITHOUT WRITTEN AUTHORIZATION IS STRICTLY PROHIBITED.

PROJECT NO.	FILE NAME	REFERENCE NO.
0905-15	10442SKD	

SKID DRAWING FOR 60"ID x 18'-0"S/S SOUR HORIZ. PACKAGE  
 SKID: 38'-0" L x 9'-0" W

SHEET NO.	SCALE	DWG. NO.	REV.
1 OF 1	AS SHOWN	10442SKD	2