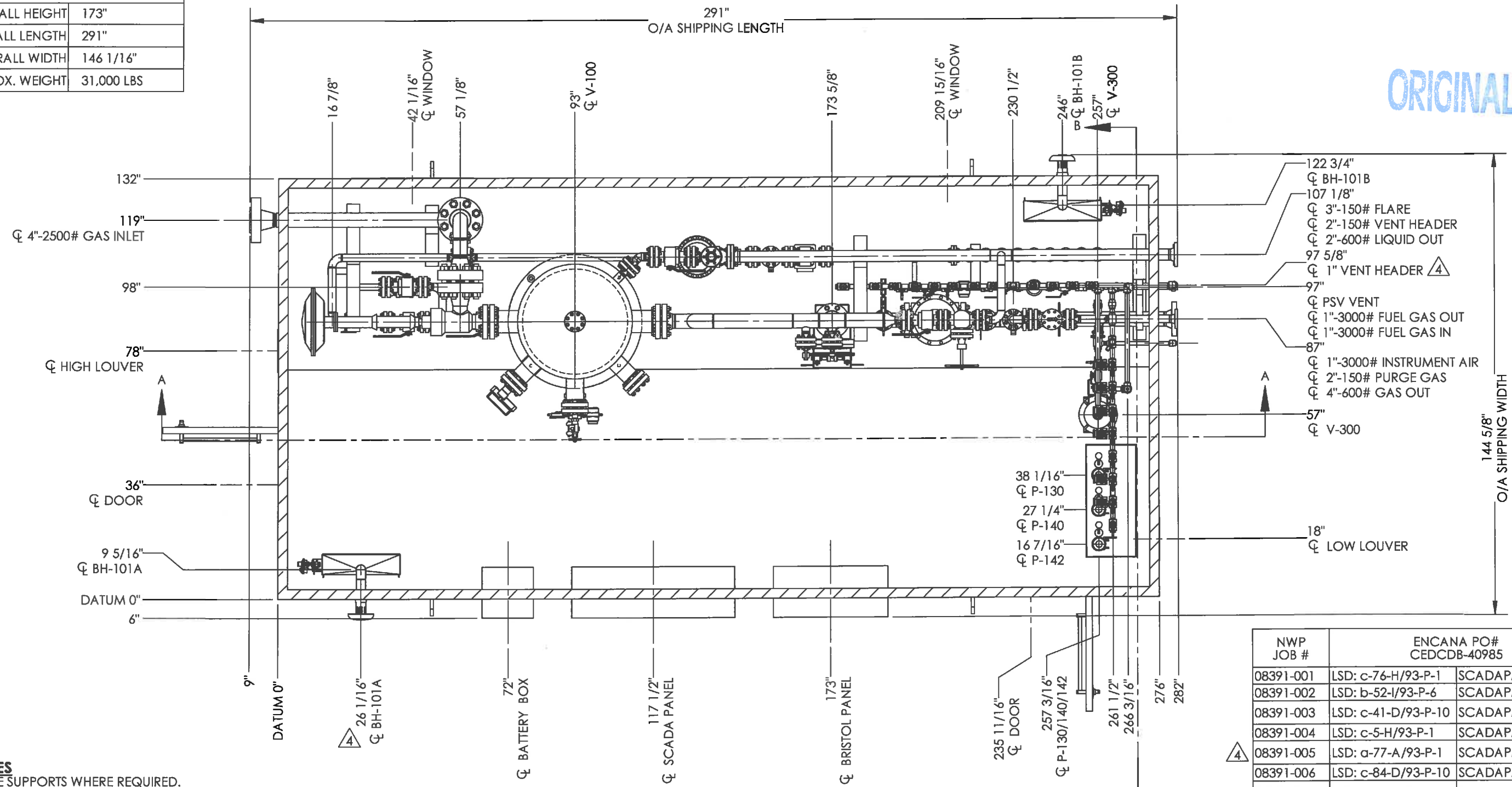


SHIPPING DATA	
OVERALL HEIGHT	173"
OVERALL LENGTH	291"
OVERALL WIDTH	146 1/16"
APPROX. WEIGHT	31,000 LBS

ORIGINAL



PLAN VIEW
SCALE: 1:32

- NOTES**
1. PIPE SUPPORTS WHERE REQUIRED.
 2. ALL PNEUMATIC VALVES AND INSTRUMENTS TO BE FUNCTION TESTED WITH 75 PSI SHOP AIR.
 3. SHIP LOOSE ITEMS TO BE BOXED AND SEALED PRIOR TO SHIPMENT.
 4. PLUG ALL OUTLETS PRIOR TO SHIPMENT.

NWP JOB #	ENCANA PO# CEDCDB-40985	
08391-001	LSD: c-76-H/93-P-1	SCADAPAK
08391-002	LSD: b-52-I/93-P-6	SCADAPAK
08391-003	LSD: c-41-D/93-P-10	SCADAPAK/BRISTOL
08391-004	LSD: c-5-H/93-P-1	SCADAPAK
08391-005	LSD: a-77-A/93-P-1	SCADAPAK
08391-006	LSD: c-84-D/93-P-10	SCADAPAK/BRISTOL
08391-007	LSD: c-15-A/93-P-11	SCADAPAK/BRISTOL
08391-008	LSD: c-24-F/93-P-1	SCADAPAK/BRISTOL
08391-009	LSD: c-81-I/93-P-16	SCADAPAK/BRISTOL

DOCUMENT NO.	DESCRIPTION	REV.	DATE	BY	CHK	APP	DESCRIPTION
		2	2012.08.24	EP	DF	GH	01184 REV'D BATTERY BOX/PANEL DIMENSIONS
		1	2012.07.11	EP	DF	GH	REVISED PER CUSTOMER REQUEST
		0	2012.06.26	EP			ISSUED FOR CONSTRUCTION
		D	2012.06.13	EP			RE-ISSUED FOR APPROVAL
		C	2012.06.06	EP			RE-ISSUED FOR APPROVAL
		4	2012.09.25	VW	DF	GH	RFDC #01198 UPDATE TO REFLECT 1" VENT HEADER AND SP 100
		3	2012.09.05	EP	DF	GH	01195 REVISED BYPASS DIRECTION 180 DEG ON LIQUID OUT

ISSUED FOR CONSTRUCTION

SIGNED: _____

DATE: _____

W.O.: _____

S/N NWP- _____

ALL DIMENSIONS IN INCHES

NWP INDUSTRIES INC.
Total oilfield supply.

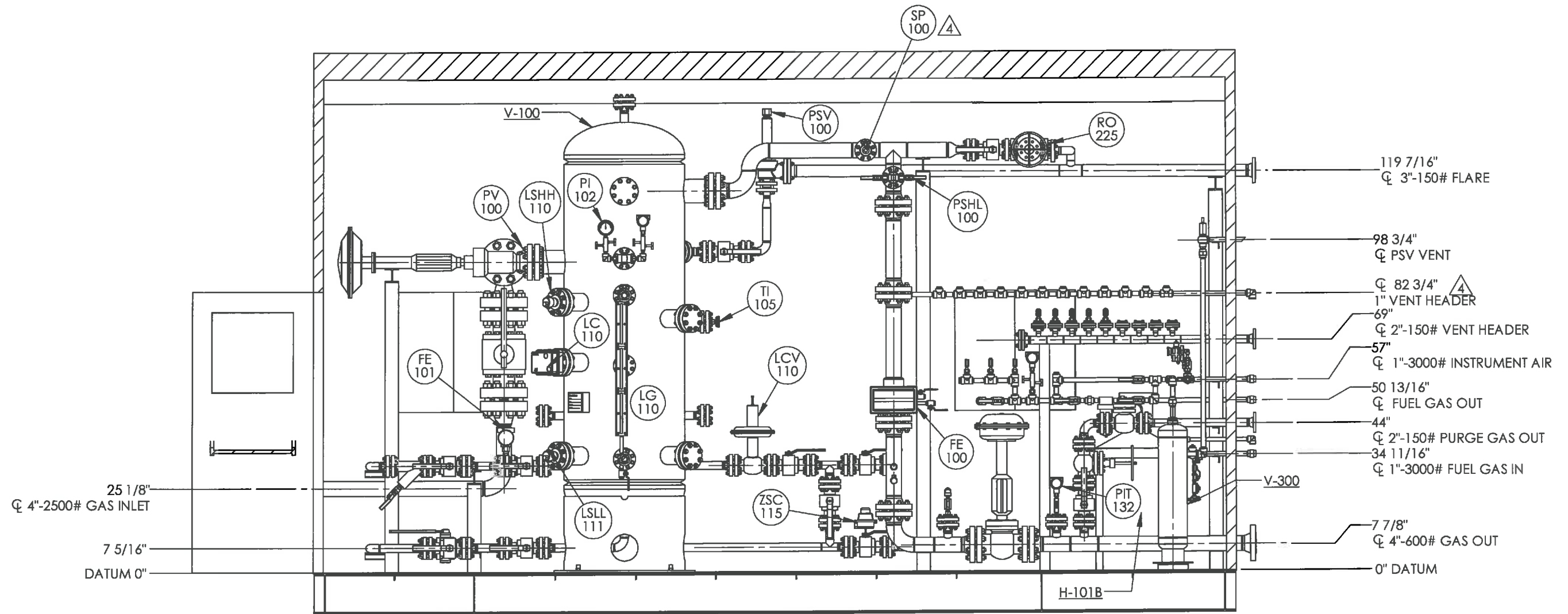
P.O. BOX 6280, INNISFAIL, AB T4G 1S9
PH: (403) 227-4100 FAX: (403) 227-4102

ENCANA CORPORATION
VERTICAL SEPARATOR PACKAGE
36" O.D. x 96" S/S 1480 PSI VESSEL

GENERAL ARRANGEMENT - PLAN VIEW

DWN: EP	CHK: DF	APP: GH
DATE: 2012.05.23	DATE: 2012.08.13	DATE: 2012.08.13
SCALE: 1:32	DWG: 08391	REV: 4
SHEET: 1 OF 4		

AS BUILT



SECTION A-A
SCALE: 1:32

ORIGINAL

NWP JOB #	ENCANA PO#	
	CEDCDB-40985	
08391-001	LSD: c-76-H/93-P-1	SCADAPAK
08391-002	LSD: b-52-I/93-P-6	SCADAPAK
08391-003	LSD: c-41-D/93-P-10	SCADAPAK/BRISTOL
08391-004	LSD: c-5-H/93-P-1	SCADAPAK
08391-005	LSD: a-77-A/93-P-1	SCADAPAK
08391-006	LSD: c-84-D/93-P-10	SCADAPAK/BRISTOL
08391-007	LSD: c-15-A/93-P-11	SCADAPAK/BRISTOL
08391-008	LSD: c-24-F/93-P-1	SCADAPAK/BRISTOL
08391-009	LSD: c-81-I/93-P-16	SCADAPAK/BRISTOL

DOCUMENT NO.	DESCRIPTION	REV.	DATE	BY	CHK	APP	DESCRIPTION
		2	2012.08.24	EP	DF	GH	01184 REV'D BATTERY BOX/PANEL DIMENSIONS
		1	2012.07.11	EP	DF	GH	REVISED PER CUSTOMER REQUEST
		0	2012.06.26	EP			ISSUED FOR CONSTRUCTION
		D	2012.06.13	EP			RE-ISSUED FOR APPROVAL
		C	2012.06.06	EP			RE-ISSUED FOR APPROVAL
		4	2012.09.25	VW	SA	SA	RFDC #01198 UPDATE TO REFLECT 1" VENT HEADER AND SP 100
		3	2012.09.05	EP	DF	GH	01195 REVISED BYPASS DIRECTION 180 DEG ON LIQUID OUT

AS BUILT

ISSUED FOR CONSTRUCTION

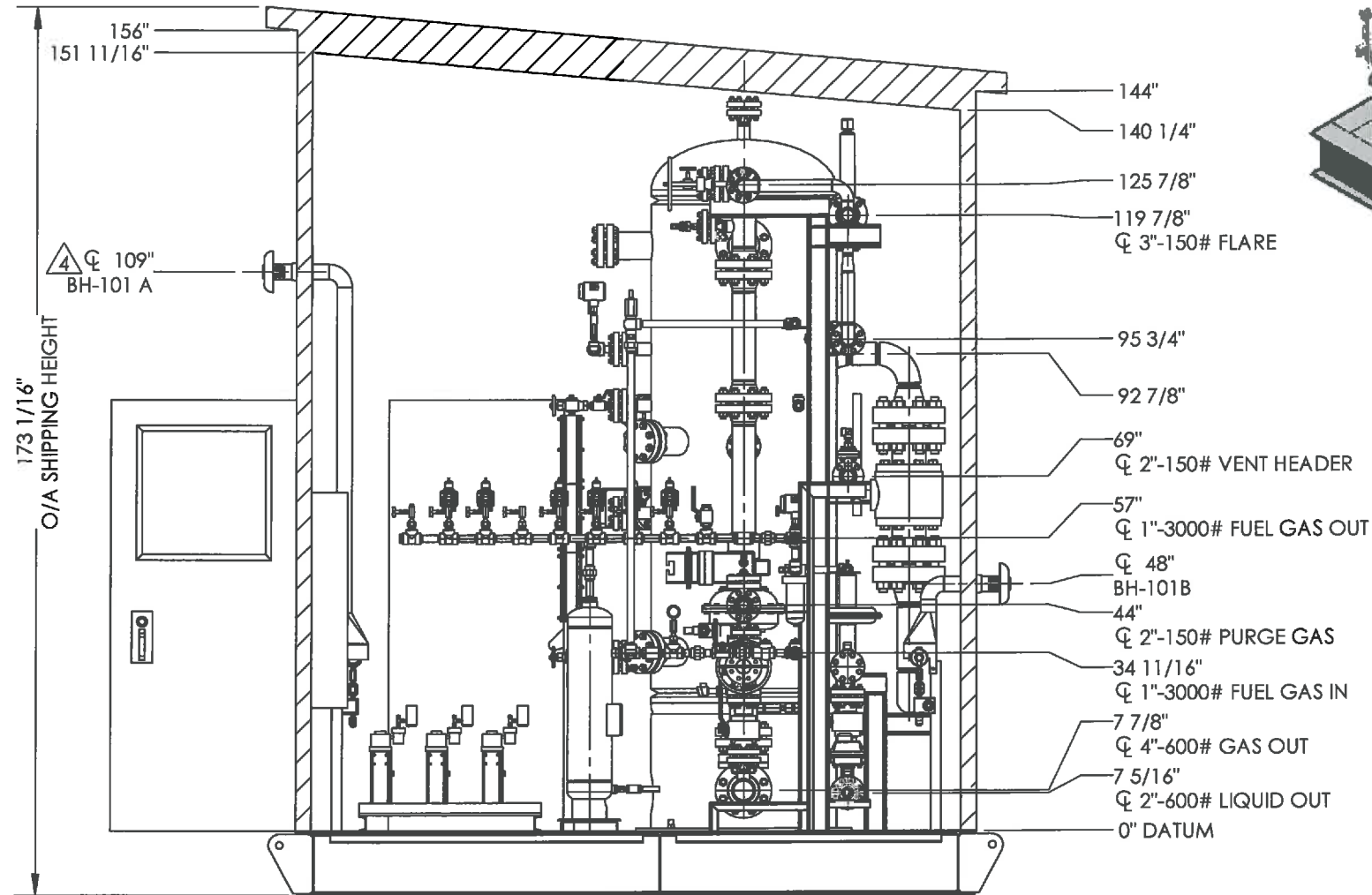
SIGNED: _____
DATE: _____
W.O.: _____
S/N NWP- _____
ALL DIMENSIONS IN INCHES



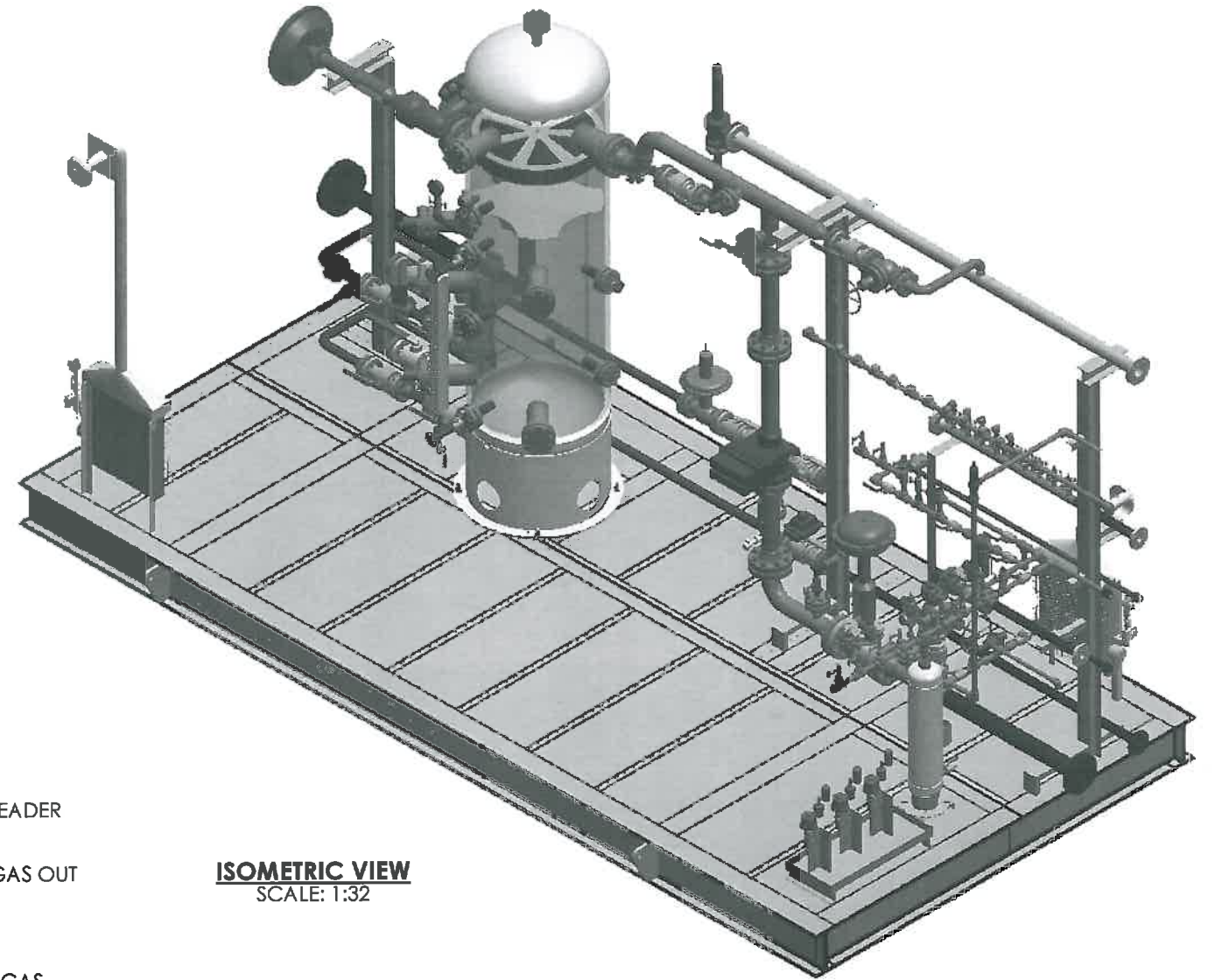
P.O. BOX 6280, INNISFAIL, AB T4G 1S9
PH: (403) 227-4100 FAX: (403) 227-4102

ENCANA CORPORATION VERTICAL SEPARATOR PACKAGE 36" O.D. x 96" S/S 1480 PSI VESSEL		
GENERAL ARRANGEMENT - SECTION A-A		
DWN: EP	CHK: DF	APP: GH
DATE: 2012.05.23	DATE: 2012.08.13	DATE: 2012.08.13
SCALE: 1:32	DWG: 08391	REV: 4
SHEET: 2 OF 4		

THIS DRAWING IS PROPERTY OF NWP INDUSTRIES INC. AND MAY NOT BE REPRODUCED WITHOUT PERMISSION. THIS DRAWING MUST BE RETURNED UPON REQUEST.



VIEW B-B
SCALE: 1:32



ISOMETRIC VIEW
SCALE: 1:32

ORIGINAL

NWP JOB #	ENCANA PO# CEDCDB-40985	
08391-001	LSD: c-76-H/93-P-1	SCADAPAK
08391-002	LSD: b-52-I/93-P-6	SCADAPAK
08391-003	LSD: c-41-D/93-P-10	SCADAPAK/BRISTOL
08391-004	LSD: c-5-H/93-P-1	SCADAPAK
08391-005	LSD: a-77-A/93-P-1	SCADAPAK
08391-006	LSD: c-84-D/93-P-10	SCADAPAK/BRISTOL
08391-007	LSD: c-15-A/93-P-11	SCADAPAK/BRISTOL
08391-008	LSD c-24-F/93-P-1	SCADAPAK/BRISTOL
08391-009	LSD: c-81-I/93-P-16	SCADAPAK/BRISTOL

AS BUILT

ISSUED FOR CONSTRUCTION



P.O. BOX 6280, INNISFAIL, AB T4G 1S9
PH: (403) 227-4100 FAX: (403) 227-4102

ENCANA CORPORATION
VERTICAL SEPARATOR PACKAGE
36" O.D. x 96" S/S 1480 PSI VESSEL

GENERAL ARRANGEMENT - SECTION B-B/ISO VIEW

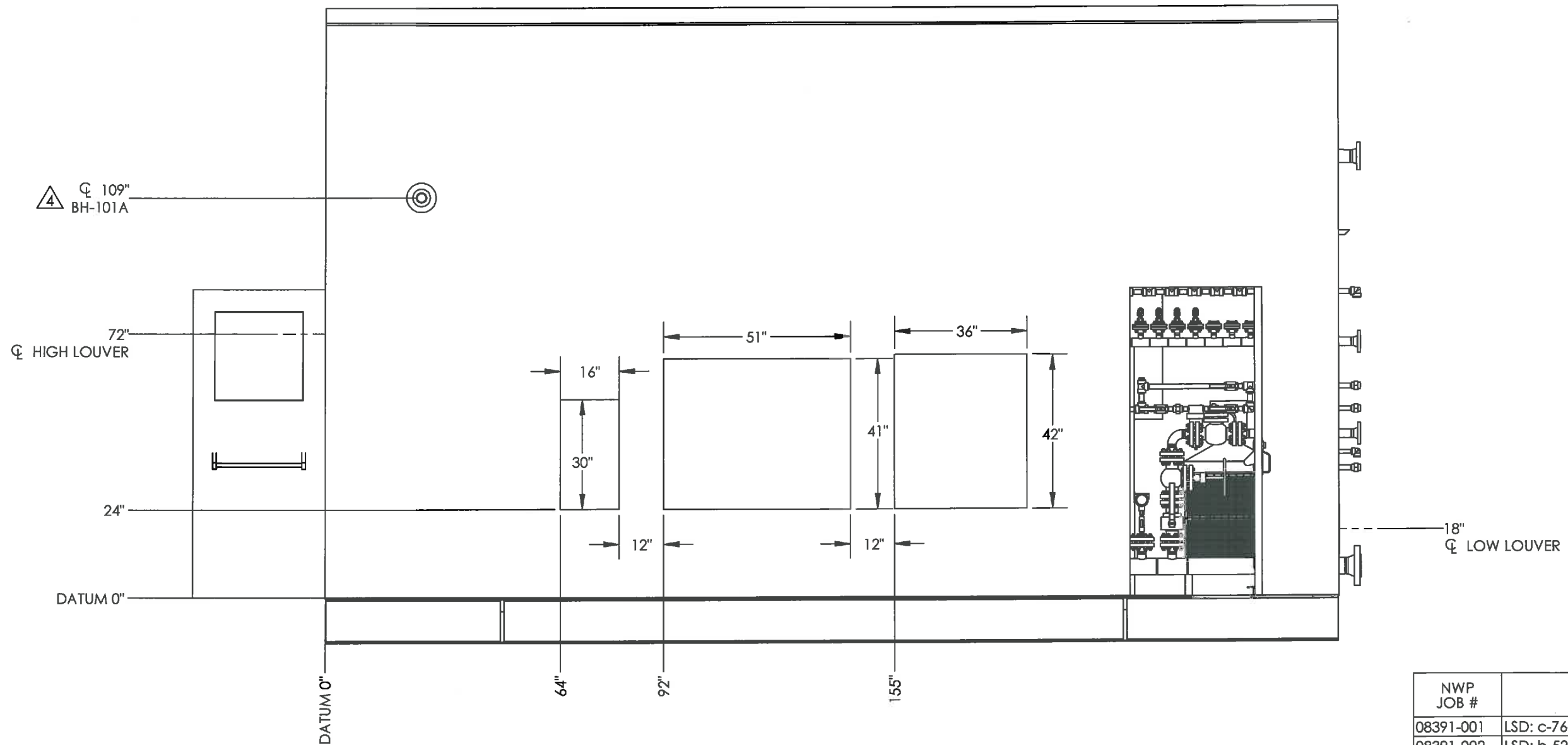
DWN: EP	CHK: DF	APP: GH
DATE: 2012.05.23	DATE: 2012.08.13	DATE: 2012.08.13

SCALE: 1:40	DWG: 08391	REV: 4
SHEET: 3 OF 4		

SIGNED: _____
DATE: _____
W.O.: _____
S/N NWP- _____
ALL DIMENSIONS IN INCHES

REV.	DATE	BY	CHK	APP	DESCRIPTION
2	2012.08.24	EP	DF	GH	01 184 REV'D BATTERY BOX/PANEL DIMENSIONS
1	2012.07.11	EP	DF	GH	REVISED PER CUSTOMER REQUEST
0	2012.06.26	EP			ISSUED FOR CONSTRUCTION
D	2012.06.13	EP			RE-ISSUED FOR APPROVAL
C	2012.06.06	EP			RE-ISSUED FOR APPROVAL
4	2012.09.25	VW	DF	GH	RFDC #01198 UPDATE TO REFLECT 1" VENT HEADER AND SP 100
3	2012.09.05	EP	DF	GH	01 195 REVISED BYPASS DIRECTION 180 DEG ON LIQUID OUT

DOCUMENT NO.	DESCRIPTION
	REFERENCE DRAWINGS



ORIGINAL

NWP JOB #	ENCANA PO# CEDCDB-40985	
08391-001	LSD: c-76-H/93-P-1	SCADAPAK
08391-002	LSD: b-52-I/93-P-6	SCADAPAK
08391-003	LSD: c-41-D/93-P-10	SCADAPAK/BRISTOL
08391-004	LSD: c-5-H/93-P-1	SCADAPAK
4 08391-005	LSD: a-77-A/93-P-1	SCADAPAK
08391-006	LSD: c-84-D/93-P-10	SCADAPAK/BRISTOL
08391-007	LSD: c-15-A/93-P-11	SCADAPAK/BRISTOL
08391-008	LSD c-24-F/93-P-1	SCADAPAK/BRISTOL
08391-009	LSD: c-81-I/93-P-16	SCADAPAK/BRISTOL

FRONT VIEW
SCALE: 1:32

AS BUILT

ISSUED FOR CONSTRUCTION



ENCANA CORPORATION
VERTICAL SEPARATOR PACKAGE
36" O.D. x 96" S/S 1480 PSI VESSEL

SIGNED: _____
DATE: _____
W.O.: _____
S/N NWP- _____
ALL DIMENSIONS IN INCHES

P.O. BOX 6280, INNISFAIL, AB T4G 1S9
PH: (403) 227-4100 FAX: (403) 227-4102

GENERAL ARRANGEMET - PANEL ARRANGEMENT

DWN: EP	CHK: DF	APP: GH
DATE: 2012.05.23	DATE: 2012.08.13	DATE: 2012.08.13

SCALE: 1:32	DWG: 08391	REV: 4
SHEET: 4 OF 4		

DOCUMENT NO.	DESCRIPTION	REV.	DATE	BY	CHK	APP	DESCRIPTION
		2	2012.08.24	EP	DF	GH	01184 REV'D BATTERY BOX/PANEL DIMENSIONS
		1	2012.07.11	EP	DF	GH	REVISED PER CUSTOMER REQUEST
		0	2012.06.26	EP			ISSUED FOR CONSTRUCTION
		D	2012.06.13	EP			RE-ISSUED FOR APPROVAL
		C	2012.06.06	EP			RE-ISSUED FOR APPROVAL
		4	2012.09.25	VW	D	GH	RFDC #01198 UPDATE TO REFLECT 1" VENT HEADER AND SP 100
		3	2012.09.05	EP	DF	GH	01195 REVISED BYPASS DIRECTION 180 DEG ON LIQUID OUT