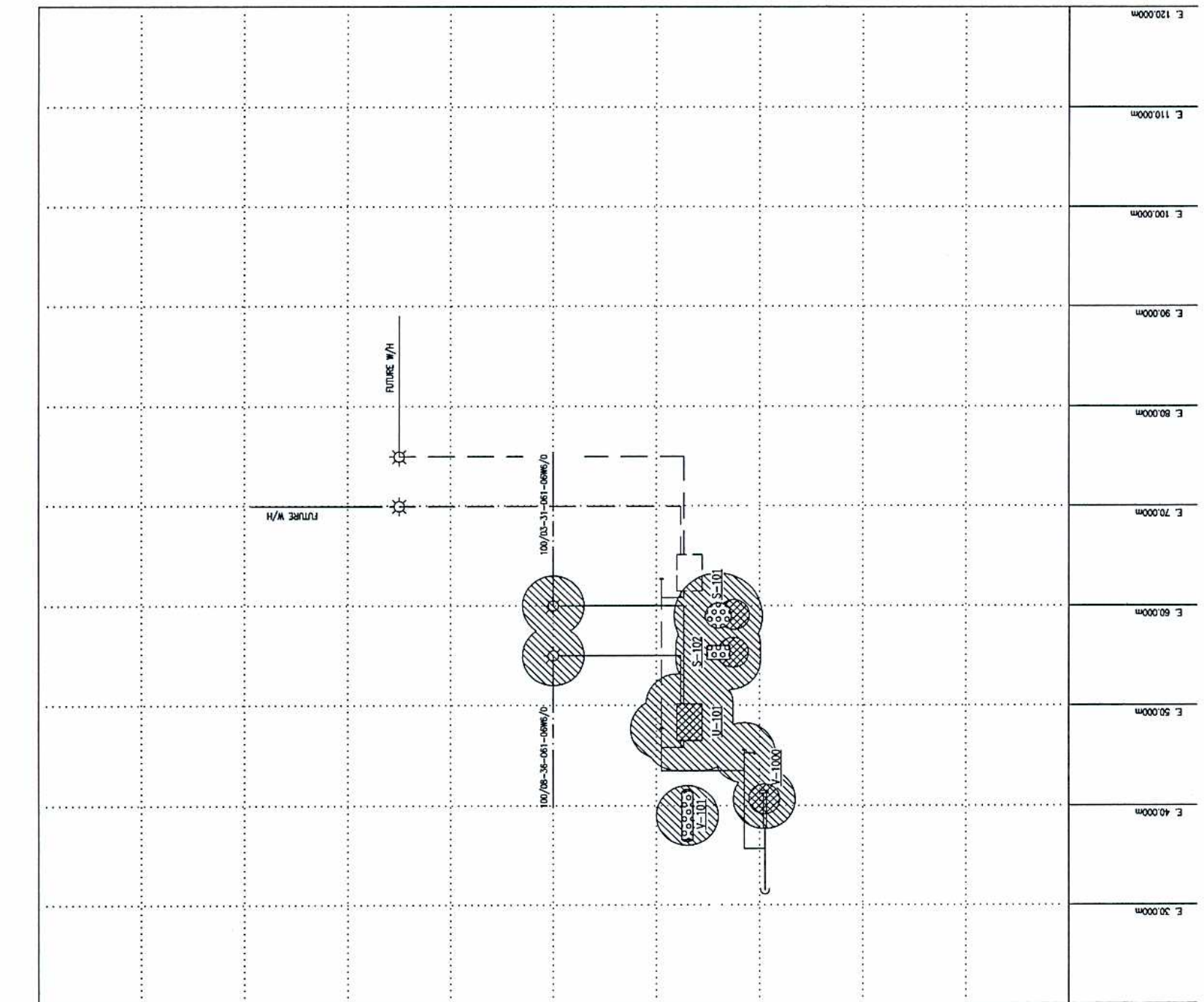
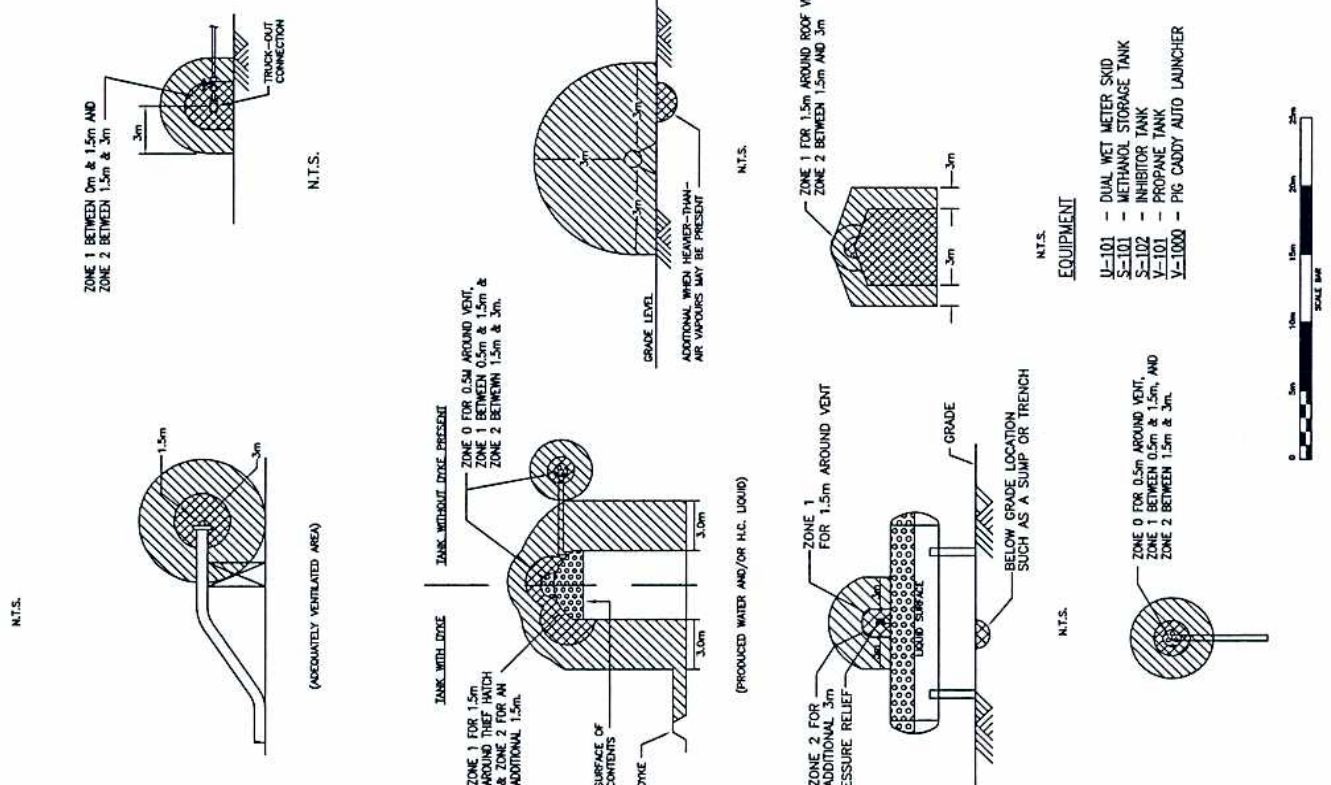


N. 120.000m
 N. 110.000m
 N. 100.000m
 N. 90.000m
 N. 80.000m
 N. 70.000m
 N. 60.000m
 N. 50.000m
 N. 40.000m
 N. 30.000m
 N. 20.000m



LEGEND

	CLASS 1, ZONE 0, GROUP IA
	CLASS 1, ZONE 1, GROUP IA
	CLASS 1, ZONE 2, GROUP IA
	CLASS 1, ZONE 0, GROUP IB
	CLASS 1, ZONE 1, GROUP IB
	CLASS 1, ZONE 2, GROUP IB
	CLASS 1, ZONE 0, GROUP IC
	CLASS 1, ZONE 1, GROUP IC
	CLASS 1, ZONE 2, GROUP IC
	CLASS 1, ZONE 0, GROUP ID
	CLASS 1, ZONE 1, GROUP ID
	CLASS 1, ZONE 2, GROUP ID
	NON-HAZARDOUS



encana
 natural gas
 THE BIGHORN TYPICALS
 VARIES
 THE PAD SITE
 VARIES
 SCALE 1:250 (A1 Size) DATE 2011-01-32
MAC ENGINEERING INC.
 ELECTRICAL PLOT PLAN
 AREA CLASSIFICATION
 BIGHORN BU
 CLASS FILE NO. N BHT0148B

NO.	DATE	PROJECT DESCRIPTION	PROJ.	AVE.	EPCM Co.	EPCM No.	APPR.	ISSUE STAGE	DATE	BY	CHGD.	APPD.	PERMIT STAMP	ENGINEER'S STAMP
1	2011.11.18	RTU PANEL CONSTRUCTION			MAC ENG.	2011-0132		Prin. (A)						
								Rev. (B)	2011.11.18					
								Comm. (C)						
								As-Built (D)						
REVISION NUMBER B-1														
PERMIT STAMP AND PROFESSIONAL STAMP ATTACHED ABOVE SHALL APPLY ONLY TO REV(A)														
1B-1														



- NOTES:**
- GROUND WELL C/W GROUND ROD.
 - BOLTED TYPE CONNECTION - BURKADY SERVIT PAST STYLE.
 - P - CONNECTION TO STEEL PILE
 - W - CONNECTION TO WALL OF BUILDING
 - COMPRESSION TYPE CONNECTION - BURKADY HANGROUND OR APPROVED EQUAL COMPRESSION TO BE MADE WITH BURKADY HYPRESS.
 - STEEL PILE USED AS GROUND ELECTRODE
1. MAXIMUM RESISTANCE TO GROUND SHALL BE 5 OHMS. CONTRACTOR SHALL ADD MORE GROUND ELECTRODES AS REQUIRED.
 2. PLANT, MAIN GROUND SHALL BE #2 AWG THW COLOURED GREEN AND SHALL BE INSTALLED IN CABLE TRAY & BONDED TO STEEL PILE AT LOCATIONS AS INDICATED ON DRAWING.
 3. CONNECTIONS FROM PLANT SYSTEM GROUND TO VESSELS AND BUILDINGS SHALL BE #2 AWG THW INSULATION COLOURED GREEN.
 4. ALL ABOVE GROUND CONNECTIONS TO BE PROTECTED WHEN LEAVING GROUND BY 21mm PIC CONDUIT.
 5. ALL ELECTRICAL EQUIPMENT IS TO BE GROUND TO BUILDING GROUND PLATE IN ACCORDANCE WITH THE C.E.C. SECTION 10 AND AS SHOWN ON THE DRAWINGS.
 6. ALL GROUNDING CONDUCTOR CONNECTIONS ABOVE GROUND SHALL BE COATED WITH EPDM PAINT AND WRAPPED WITH RUBBER TPE.
 7. SEALS SHALL BE INSTALLED AS REQUIRED BY THE C.E.C.
 8. CABLE TRAY TO BE GROUNDING EVERY 10M AS SHOWN ON DETAILS. EVERY TRAY EXPANSION JOINT SHALL HAVE #2 THW BONDING JUMPER.
 9. CABLE 8 METERS #4 WELDING CABLE COMPLETE WITH GROUND LUG CLAMP WELDING TYPE AT TWO LOCATIONS INDICATED ON THIS DRAWING.
 10. MAIN CABLE TRAY RUNS ON PIPERACK SHALL BE LADDER TYPE, ALUMINUM LADDER CLUES 1" (600, 600, 450, 300, 150mm) WIDTH AS SPECIFIED C/W 150mm HIGHER RAILS, 225mm RAIL SPACING, 6 METER SPAN AND ALL INTERCONNECTING PIPERACK ACCESSORIES.

- EQUIPMENT**
- U-301 - TRIPLE WET METER SKID
 - S-101 - METHANOL STORAGE TANK
 - S-102 - INHIBITOR TANK
 - V-101 - PROPANE TANK
 - V-1000 - PIC CADDY AUTO LAUNCHER

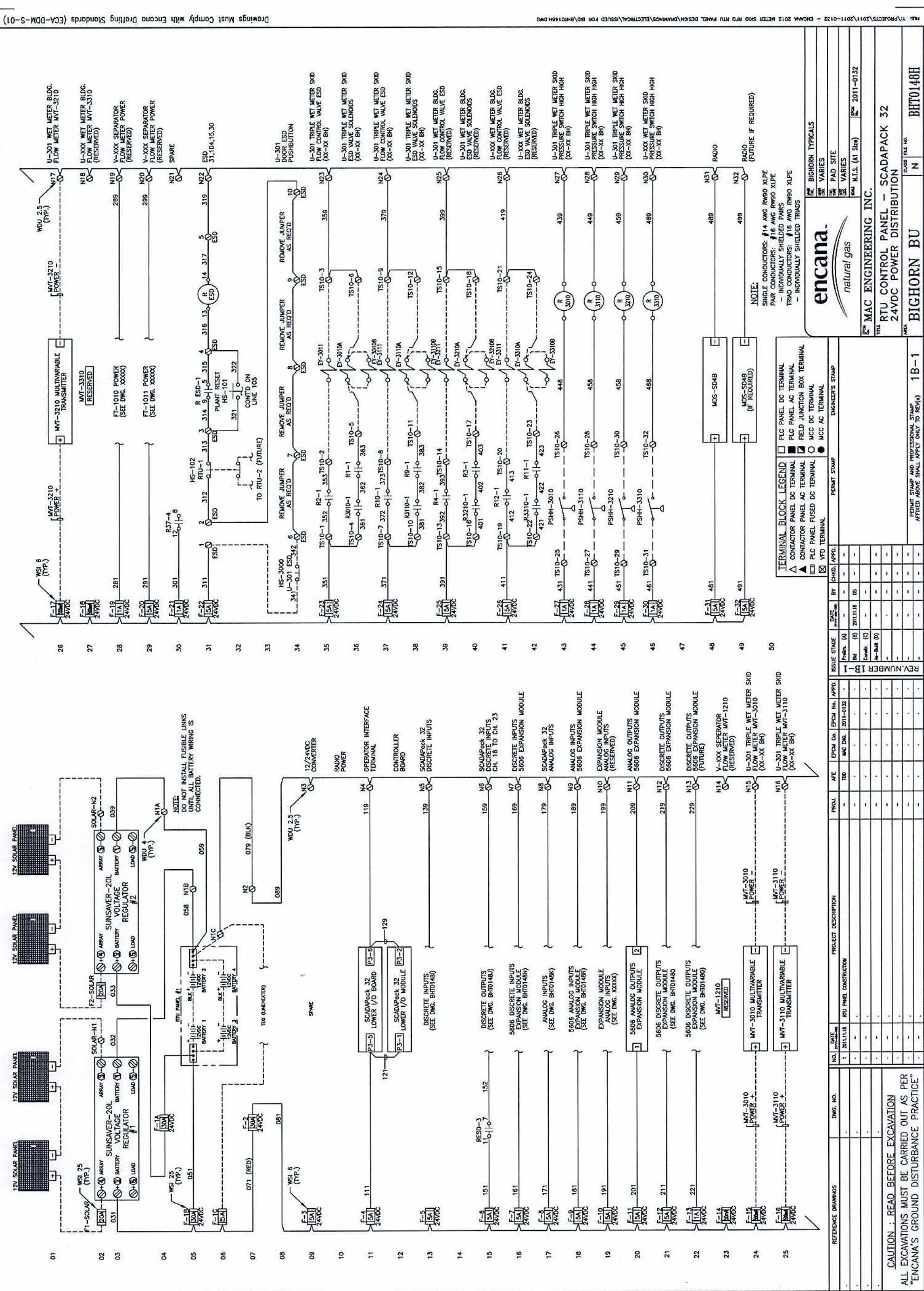


encana.
natural gas

MAC ENGINEERING INC.
 ELECTRICAL PLOT PLAN
 CABLE ROUTING AND GROUNDING

AREA: BIGHORN BU
 CLASS: FILE NO. N
 PROJECT FILE NO. BHT0148C

NO.	DATE	PROJECT DESCRIPTION	PROJ.	AVE	EPCM Co.	EPCM No.	APPO.	ISSUE STAGE	DATE	BY	CHKD.	APPO.	PERMIT STAMP	ENGINEER'S STAMP
1	2011.11.18	RU PANEL CONSTRUCTION		TBD	MAC ENG.	2011-0132		Permit	2011.11.18					
REVISION NUMBER 1B-1 Permit: 2011.11.18 By: [Signature] Check: [Signature] As-built: [Signature] Standard: [Signature]														
CAUTION : READ BEFORE EXCAVATION ALL EXCAVATIONS MUST BE CARRIED OUT AS PER "ENCANA'S GROUND DISTURBANCE PRACTICE"														
PERMIT STAMP AND PROFESSIONAL STAMP AFFRRED ABOVE SHALL APPLY ONLY TO REV(S) 1B-1														



NO.	DATE	DWG. NO.	PROJECT DESCRIPTION	PROJ.	ATE	EPDM CO.	EPDM NO.	APPD.	ISSUE STAGE	DATE	BY	ENGR. APPD.	ENGINEER'S STAMP
1	2011.11.8		RTU PANEL CONSTRUCTION		TBD	MAC DMC	2011-0132		Prep. (A)				
									Rev. (B)	2011.11.8	DE		
									Comm. (C)				
									As-Built (D)				

CAUTION: READ BEFORE EXCAVATION
 ALL EXCAVATIONS MUST BE CARRIED OUT AS PER
 'ENCANA'S GROUND DISTURBANCE PRACTICE'

TERMINAL BLOCK LEGEND

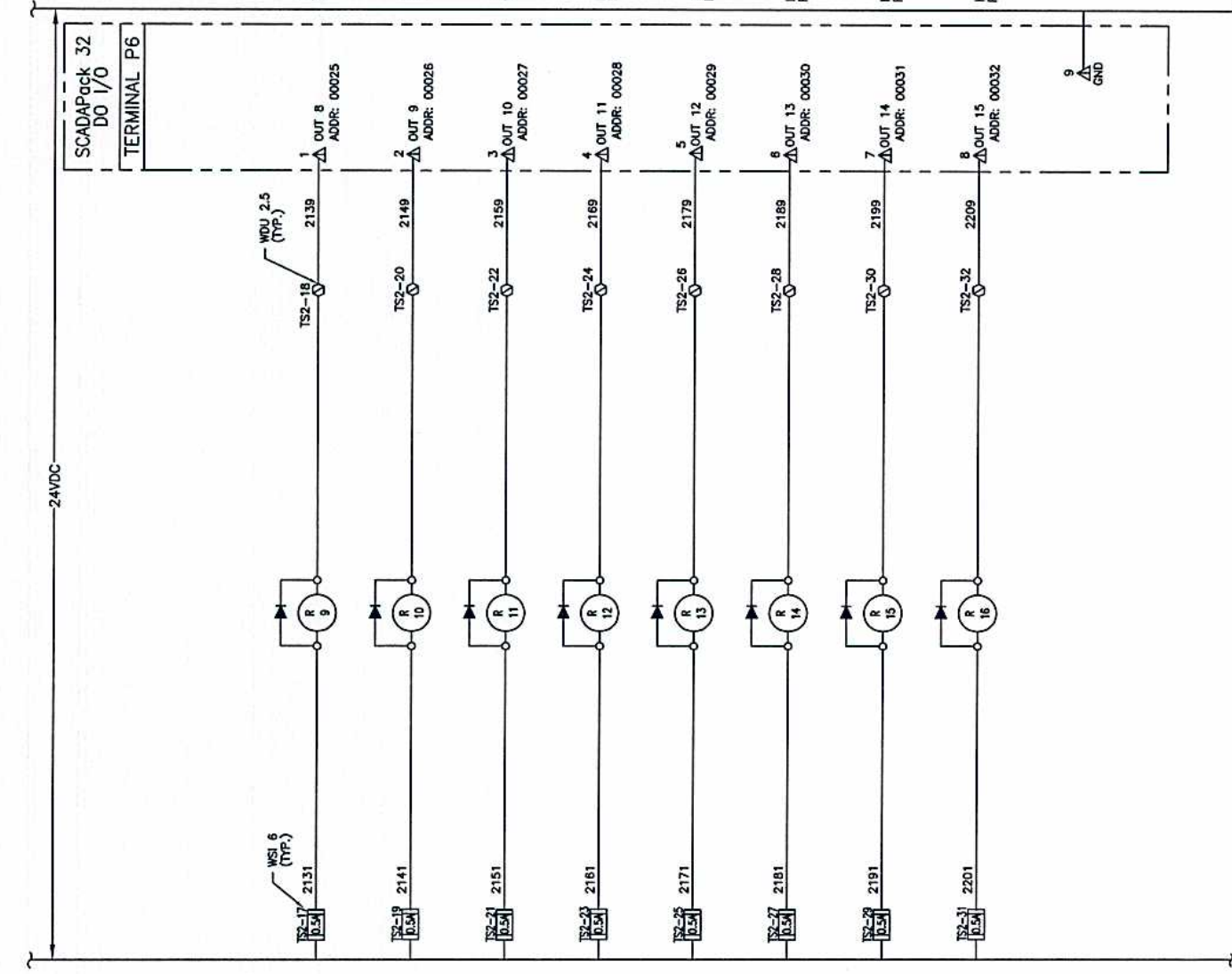
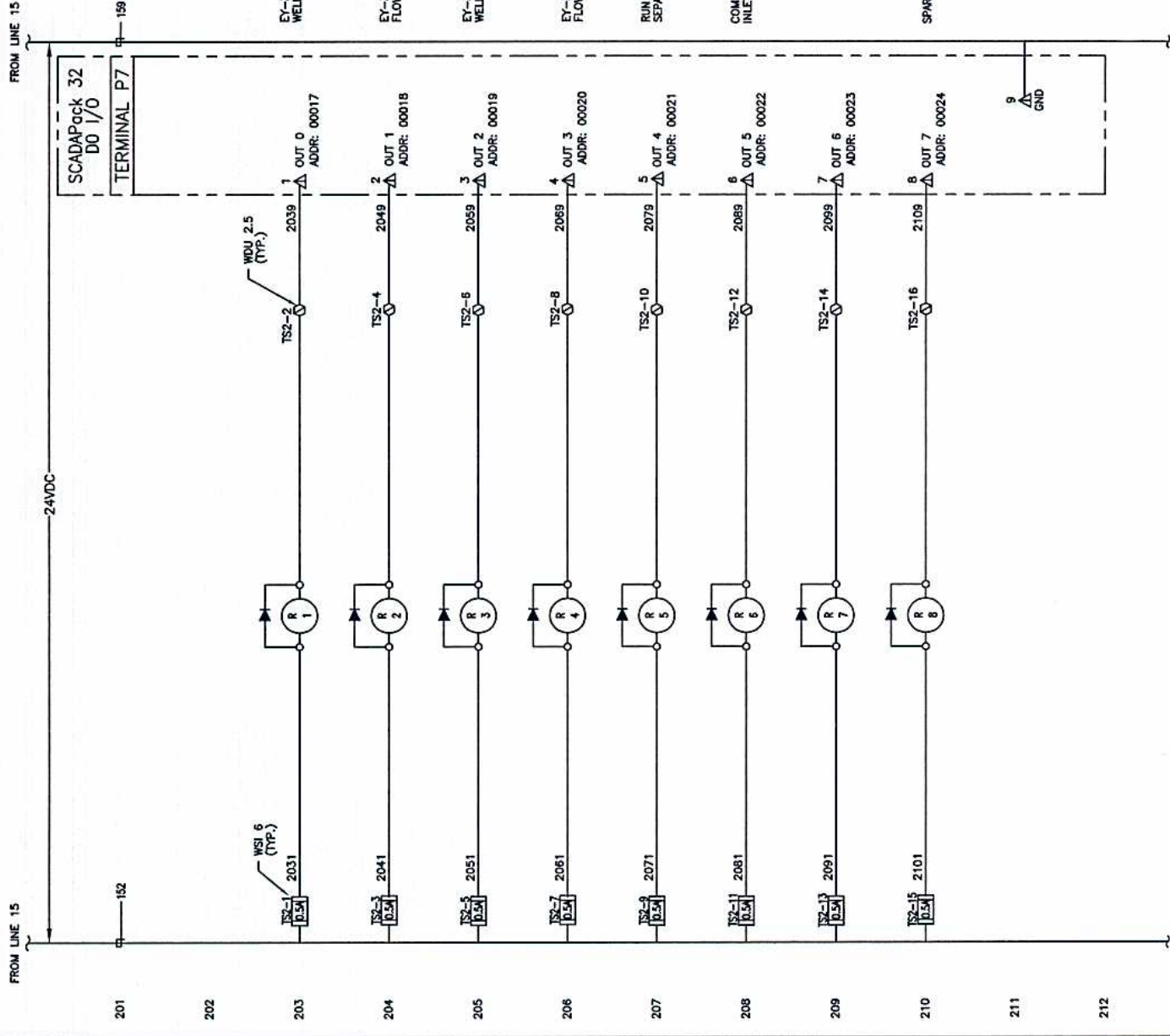
- PLC PANEL DC TERMINAL
- PLC PANEL AC TERMINAL
- △ CONTACTOR PANEL AC TERMINAL
- △ FIELD JUNCTION BOX TERMINAL
- PLC PANEL FUSED DC TERMINAL
- MCC DC TERMINAL
- MCC AC TERMINAL
- VFD TERMINAL

NOTE:
 SINGLE CONDUCTORS: #14 AWG RW90 XLPE
 PAIR CONDUCTORS: #16 AWG RW90 XLPE
 - INDIVIDUALLY SHIELDED PAIRS
 TRAD CONDUCTORS: #16 AWG RW90 XLPE
 - INDIVIDUALLY SHIELDED TRADS

encana
 natural gas

MAC ENGINEERING INC.
 RTU CONTROL PANEL - SCADAPACK 32
 24VDC POWER DISTRIBUTION

BIGHORN BU **BHT0148H**



TERMINAL BLOCK LEGEND

- PLC PANEL DC TERMINAL
- ▣ PLC PANEL AC TERMINAL
- ◻ FIELD JUNCTION BOX TERMINAL
- MCC DC TERMINAL
- MCC AC TERMINAL
- △ CONTACTOR PANEL DC TERMINAL
- ▲ CONTACTOR PANEL AC TERMINAL
- ◻ PLC PANEL FUSED DC TERMINAL
- ◻ VFD TERMINAL

NOTE:
 SINGLE CONDUCTORS: #14 AWG RW90 XLPE
 PAIR CONDUCTORS: #16 AWG RW90 XLPE
 - INDIVIDUALLY SHIELDED PAIRS
 TRIP CONDUCTORS: #18 AWG RW90 XLPE
 - INDIVIDUALLY SHIELDED TRIPS

encana
 natural gas

MAC ENGINEERING INC.
 RTU CONTROL PANEL - SCADAPACK 32
 DISCRETE OUTPUT I/O SCHEMATIC

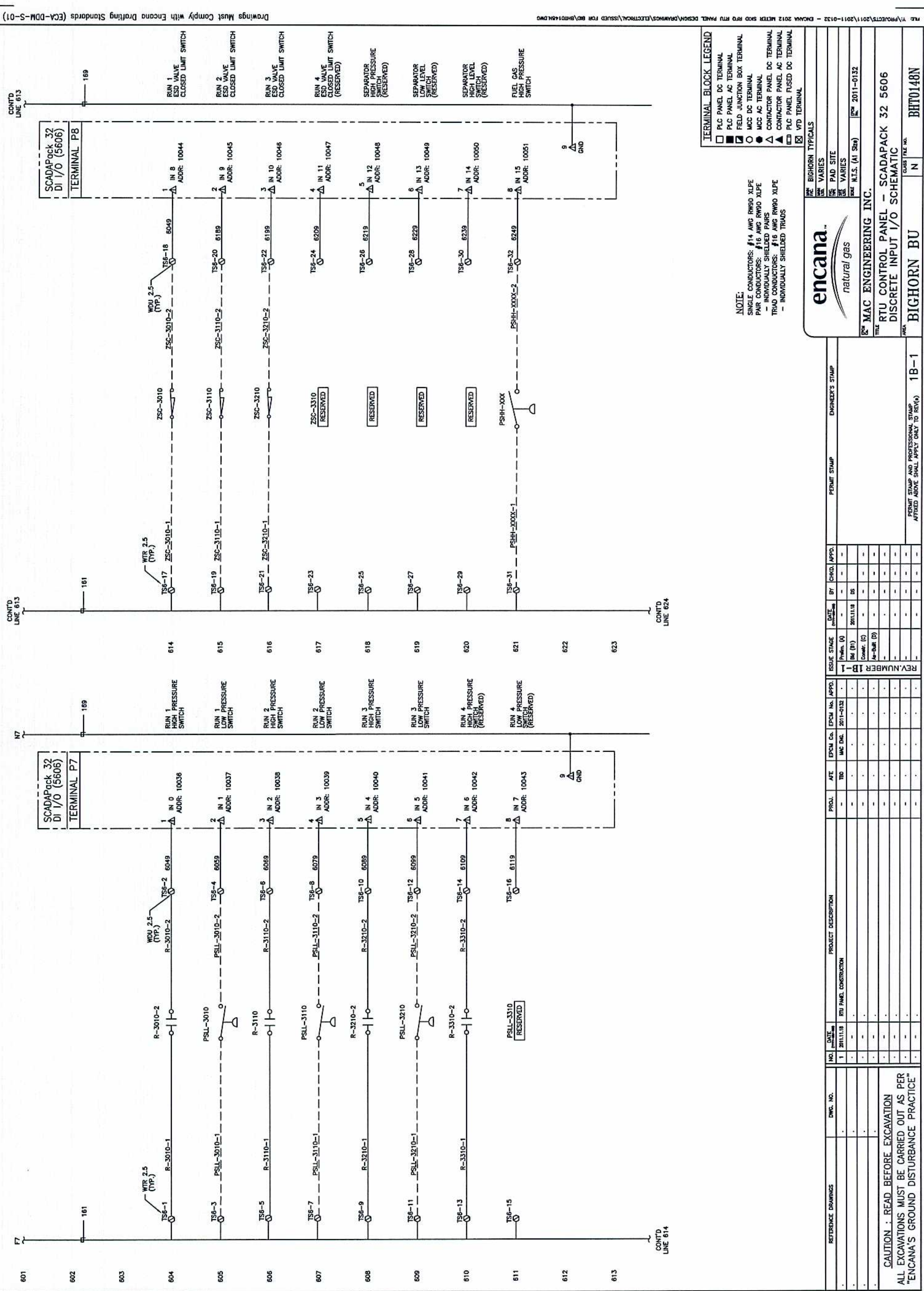
BIGHORN BU
 CASE FILE NO. N
 BHT0148J

NO.	DATE	ISSUE STAGE	BY	CHKD.	APPO.	ENGINEER'S STAMP
1	2011.11.18	Rev. (A)	DC	-	-	
		Rev. (B)				
		Contr. (C)				
		As-Built (D)				

PROJ.	A/E	EPCO Co.	EPCO No.	APPO.	PERMIT STAMP	ENGINEER'S STAMP
-	TBO	MAC ENG.	2011-0132	-		

NO.	DATE	DESCRIPTION	REV. NUMBER
1	2011.11.18	RTU PANEL CONSTRUCTION	1B-1

CAUTION : READ BEFORE EXCAVATION
 ALL EXCAVATIONS MUST BE CARRIED OUT AS PER
 "ENCANA'S GROUND DISTURBANCE PRACTICE"



TERMINAL BLOCK LEGEND

- PLC PANEL DC TERMINAL
- ▣ PLC PANEL AC TERMINAL
- ▢ FIELD JUNCTION BOX TERMINAL
- MCC DC TERMINAL
- MCC AC TERMINAL
- ▲ CONTACTOR PANEL DC TERMINAL
- ▲ CONTACTOR PANEL AC TERMINAL
- ▣ PLC PANEL FUSED DC TERMINAL
- ▣ VFD TERMINAL

NOTE:
 SINGLE CONDUCTORS: #14 AWG RW90 XLPE
 PAIR CONDUCTORS: #16 AWG RW90 XLPE
 - INDIVIDUALLY SHIELDED PAIRS
 TRAD CONDUCTORS: #16 AWG RW90 XLPE
 - INDIVIDUALLY SHIELDED TRADS

encana
 natural gas

MAC ENGINEERING INC.
 RTU CONTROL PANEL - SCADAPACK 32 5606
 DISCRETE INPUT I/O SCHEMATIC

BIGHORN BU

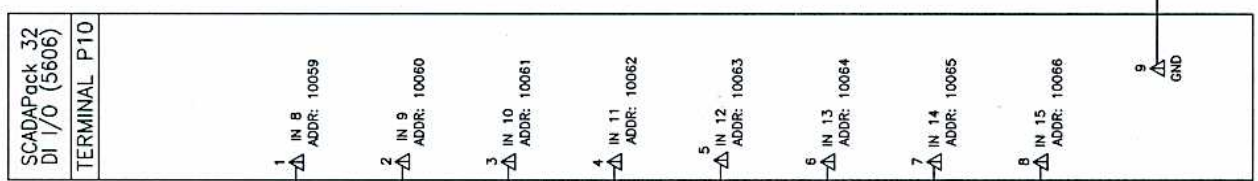
NO.	DATE	NO.	DATE	ISSUE STAGE	BY	CHKD.	APPD.	ENGINEER'S STAMP
1	2011.11.18			Prelin. (A)				
				Rev. (B)	DE			
				Const. (C)				
				As-Built (D)				

PROJ.	A/E	EPOM Co.	EPOM No.	APPD.	PERMIT STAMP	ENGINEER'S STAMP
	TBO	MAC ENG.	2011-0132			

REV. NUMBER	DESCRIPTION	DATE	BY	CHKD.	APPD.
1B-1					

CAUTION: READ BEFORE EXCAVATION
 ALL EXCAVATIONS MUST BE CARRIED OUT AS PER
 "ENCANA'S GROUND DISTURBANCE PRACTICE"

CONT'D
LINE 733



TERMINAL BLOCK LEGEND

- PLC PANEL DC TERMINAL
- PLC PANEL AC TERMINAL
- ▣ FIELD JUNCTION BOX TERMINAL
- MCC DC TERMINAL
- MCC AC TERMINAL
- △ CONTACTOR PANEL DC TERMINAL
- ▤ CONTACTOR PANEL AC TERMINAL
- ▥ PLC PANEL FUSED DC TERMINAL
- ▧ VFD TERMINAL

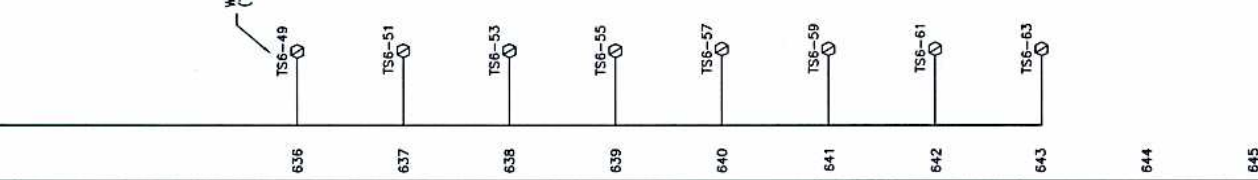
NOTE:
 SINGLE CONDUCTORS: #14 AWG RW90 XLPE
 PAIR CONDUCTORS: #16 AWG RW90 XLPE
 - INDIVIDUALLY SHELDIED PAIRS
 TRIAD CONDUCTORS: #16 AWG RW90 XLPE
 - INDIVIDUALLY SHELDIED TRIADS

encana
natural gas

MAC ENGINEERING INC.
 RTU CONTROL PANEL - SCADAPACK 32
 DISCRETE INPUT I/O SCHEMATIC

AREA: BIGHORN BU CLASS FILE NO: N BHT0148P

CONT'D
LINE 635



TERMINAL BLOCK LEGEND

- PLC PANEL DC TERMINAL
- PLC PANEL AC TERMINAL
- ▣ FIELD JUNCTION BOX TERMINAL
- MCC DC TERMINAL
- MCC AC TERMINAL
- △ CONTACTOR PANEL DC TERMINAL
- ▤ CONTACTOR PANEL AC TERMINAL
- ▥ PLC PANEL FUSED DC TERMINAL
- ▧ VFD TERMINAL

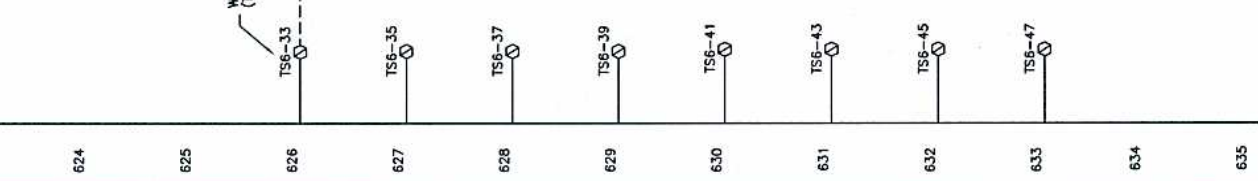
NOTE:
 SINGLE CONDUCTORS: #14 AWG RW90 XLPE
 PAIR CONDUCTORS: #16 AWG RW90 XLPE
 - INDIVIDUALLY SHELDIED PAIRS
 TRIAD CONDUCTORS: #16 AWG RW90 XLPE
 - INDIVIDUALLY SHELDIED TRIADS

encana
natural gas

MAC ENGINEERING INC.
 RTU CONTROL PANEL - SCADAPACK 32
 DISCRETE INPUT I/O SCHEMATIC

AREA: BIGHORN BU CLASS FILE NO: N BHT0148P

CONT'D
LINE 623



TERMINAL BLOCK LEGEND

- PLC PANEL DC TERMINAL
- PLC PANEL AC TERMINAL
- ▣ FIELD JUNCTION BOX TERMINAL
- MCC DC TERMINAL
- MCC AC TERMINAL
- △ CONTACTOR PANEL DC TERMINAL
- ▤ CONTACTOR PANEL AC TERMINAL
- ▥ PLC PANEL FUSED DC TERMINAL
- ▧ VFD TERMINAL

NOTE:
 SINGLE CONDUCTORS: #14 AWG RW90 XLPE
 PAIR CONDUCTORS: #16 AWG RW90 XLPE
 - INDIVIDUALLY SHELDIED PAIRS
 TRIAD CONDUCTORS: #16 AWG RW90 XLPE
 - INDIVIDUALLY SHELDIED TRIADS

encana
natural gas

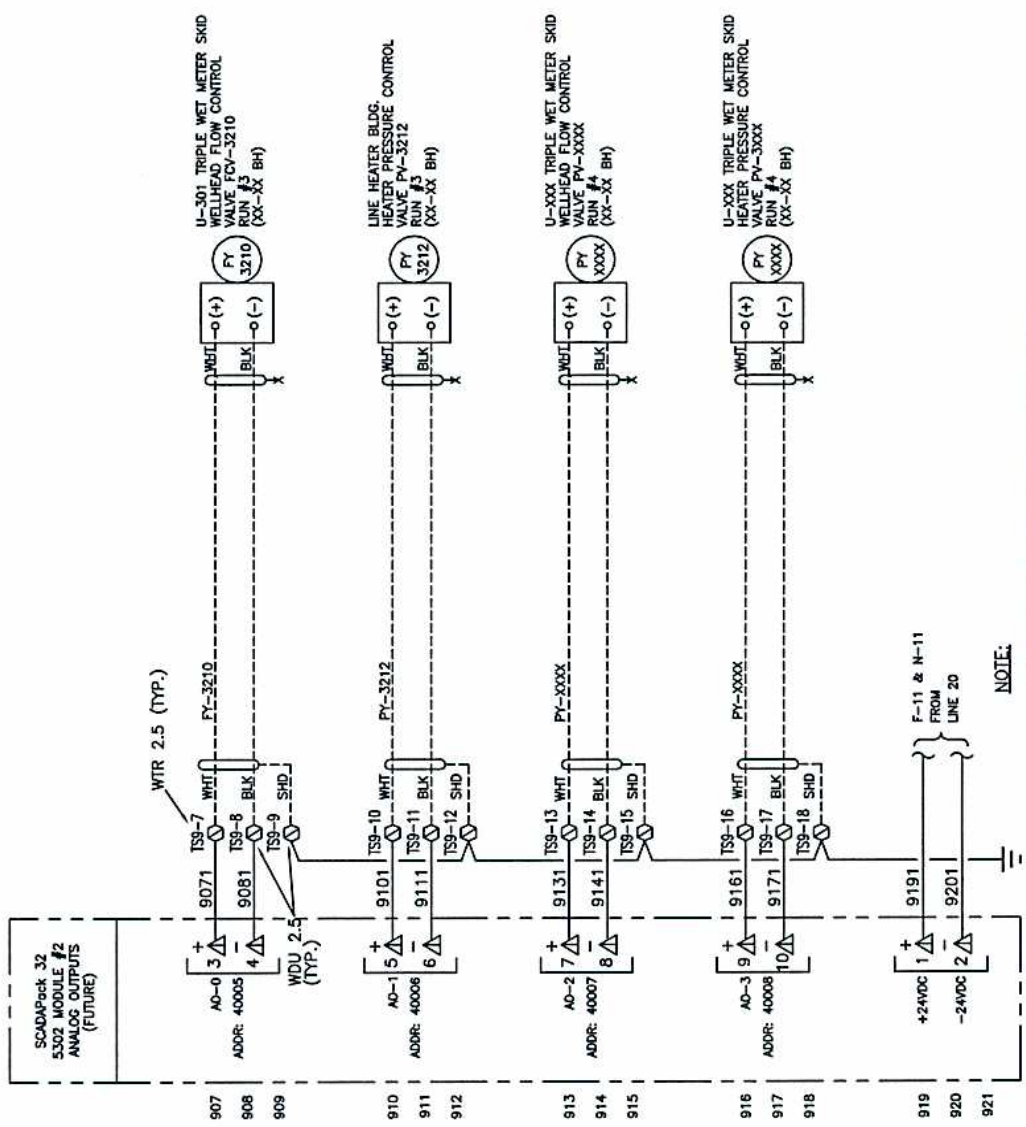
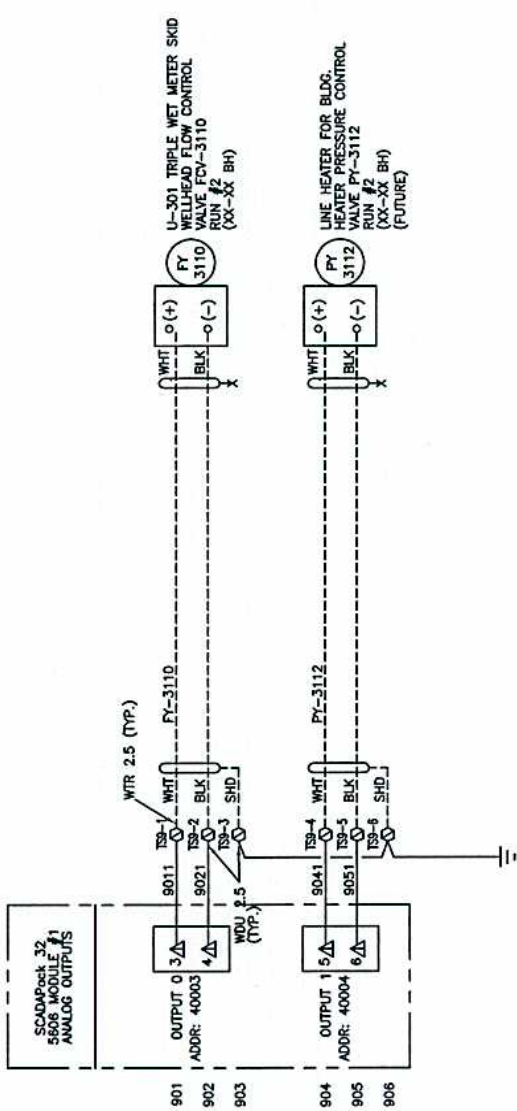
MAC ENGINEERING INC.
 RTU CONTROL PANEL - SCADAPACK 32
 DISCRETE INPUT I/O SCHEMATIC

AREA: BIGHORN BU CLASS FILE NO: N BHT0148P

NO.	DATE	DESCRIPTION	PROJ.	AFE	EPCM Co.	EPCM No.	APPD.	BY	CHKD.	APPD.	PERMIT STAMP	ENGINEER'S STAMP
1	2011.11.18	RTU PANEL CONSTRUCTION	-	TBD	MAC	2011-0132	-	-	-	-	-	-

REV.	NO.	DATE	DESCRIPTION
1	1	2011.11.18	ISSUE FOR PERMIT

CAUTION: READ BEFORE EXCAVATION
 ALL EXCAVATIONS MUST BE CARRIED OUT AS PER
 "ENCANA'S GROUND DISTURBANCE PRACTICE"



NO.	DESCRIPTION	BY	CHKD.	APPD.
922	AD-0 3			
923	AD-1 5			
924	AD-2 7			
925	AD-3 9			
926	AD-4 11			
927	AD-5 13			
928	AD-6 15			
929	AD-7 17			
930	AD-8 19			
931	AD-9 21			
932	AD-10 23			
933	AD-11 25			
934	AD-12 27			
935	AD-13 29			
936	AD-14 31			

NOTE:
 SCADAPACK 32 5606 MODULE #1 ANALOG OUTPUTS (FUTURE)
 SCADAPACK 32 5606 MODULE #2 ANALOG OUTPUTS (FUTURE)

NO.	DATE	DESCRIPTION	PROJ.	AVE	EPCM Co.	EPCM No.	APPD.	PERMIT STAMP	ENGINEER'S STAMP
1	2011.11.18	RTU PANEL CONSTRUCTION		100	WAG	2011-0132			

CAUTION : READ BEFORE EXCAVATION
 ALL EXCAVATIONS MUST BE CARRIED OUT AS PER
 "ENCANA'S GROUND DISTURBANCE PRACTICE"

REV.	NO.	DATE	DESCRIPTION
1	1B-1	2011.11.18	ISSUE STAGE
			Permit (A)
			Permit (B)
			Permit (C)
			Permit (D)

encana
 natural gas

MAC ENGINEERING INC.
 RTU CONTROL PANEL - SCADAPACK 32
 ANALOG OUTPUT I/O SCHEMATIC

BIGHORN BU

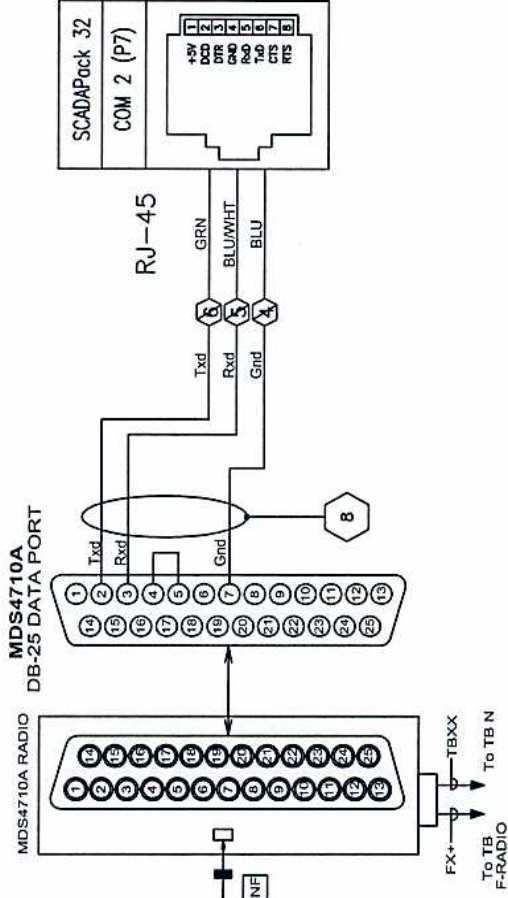
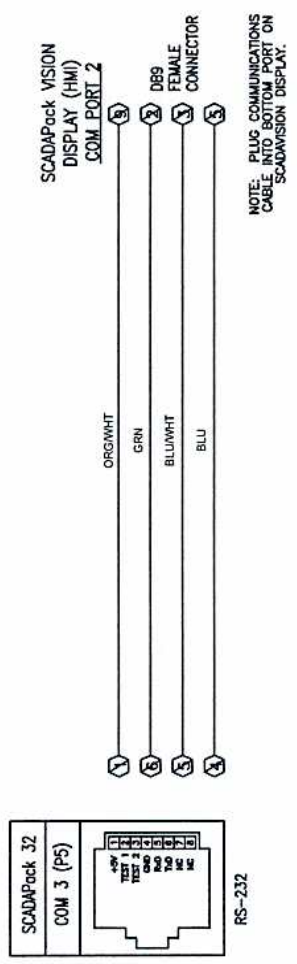
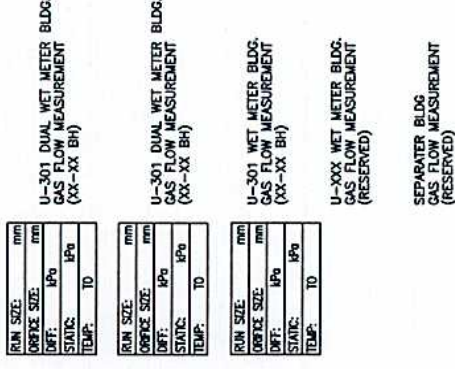
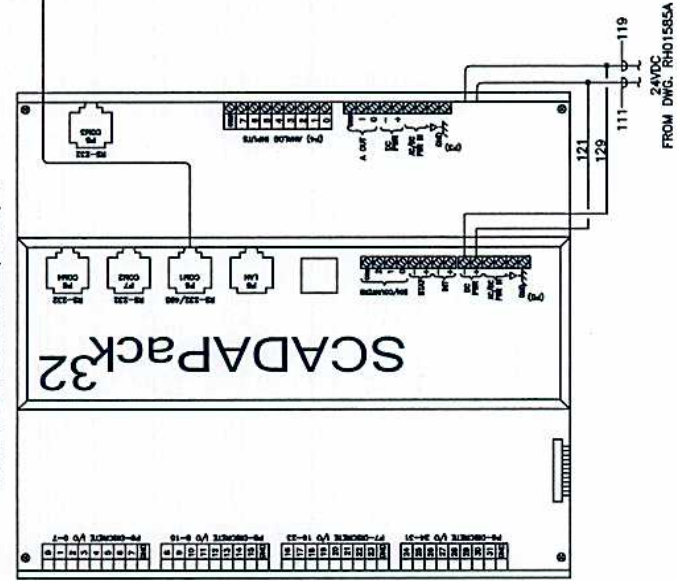
PROJECT NO. BHT0148S

TERMINAL BLOCK LEGEND

- PLC PANEL DC TERMINAL
- ▣ PLC PANEL AC TERMINAL
- FIELD JUNCTION BOX TERMINAL
- MCC DC TERMINAL
- MCC AC TERMINAL
- △ CONTACTOR PANEL DC TERMINAL
- ▲ CONTACTOR PANEL AC TERMINAL
- ▤ PLC PANEL FUSED DC TERMINAL
- ⊠ VFD TERMINAL

NOTE:
 SINGLE CONDUCTORS: #14 AWG RW90 XLPE
 PAIR CONDUCTORS: #16 AWG RW90 XLPE
 - INDIVIDUALLY SHIELDED PAIRS
 TRAD CONDUCTORS: #16 AWG RW90 XLPE
 - INDIVIDUALLY SHIELDED TRADS

SCADAPack 32 RTU (5604)



TERMINAL BLOCK LEGEND

- PLC PANEL DC TERMINAL
- ▣ PLC PANEL AC TERMINAL
- ▤ FIELD JUNCTION BOX TERMINAL
- MCC DC TERMINAL
- ◊ MCC AC TERMINAL
- △ CONTACTOR PANEL DC TERMINAL
- ▲ CONTACTOR PANEL AC TERMINAL
- ▣ PLC PANEL FUSED DC TERMINAL
- ⊠ VFD TERMINAL

NOTE:
 SINGLE CONDUCTORS: #14 AWG RW90 XLPE
 PAIR CONDUCTORS: #16 AWG RW90 XLPE
 - INDIVIDUALLY SHIELDED PAIRS
 TRAD CONDUCTORS: #16 AWG RW90 XLPE
 - INDIVIDUALLY SHIELDED TRADS

encana
 natural gas

MAC ENGINEERING INC.
 RTU CONTROL PANEL - SCADAPACK 32
 COMMUNICATIONS I/O SCHEMATIC

PROJECT NO. VARIES
 PLOT DATE: 2011-11-18
 DRAWING NO. N.T.S. (A1 Size) 2011-0132

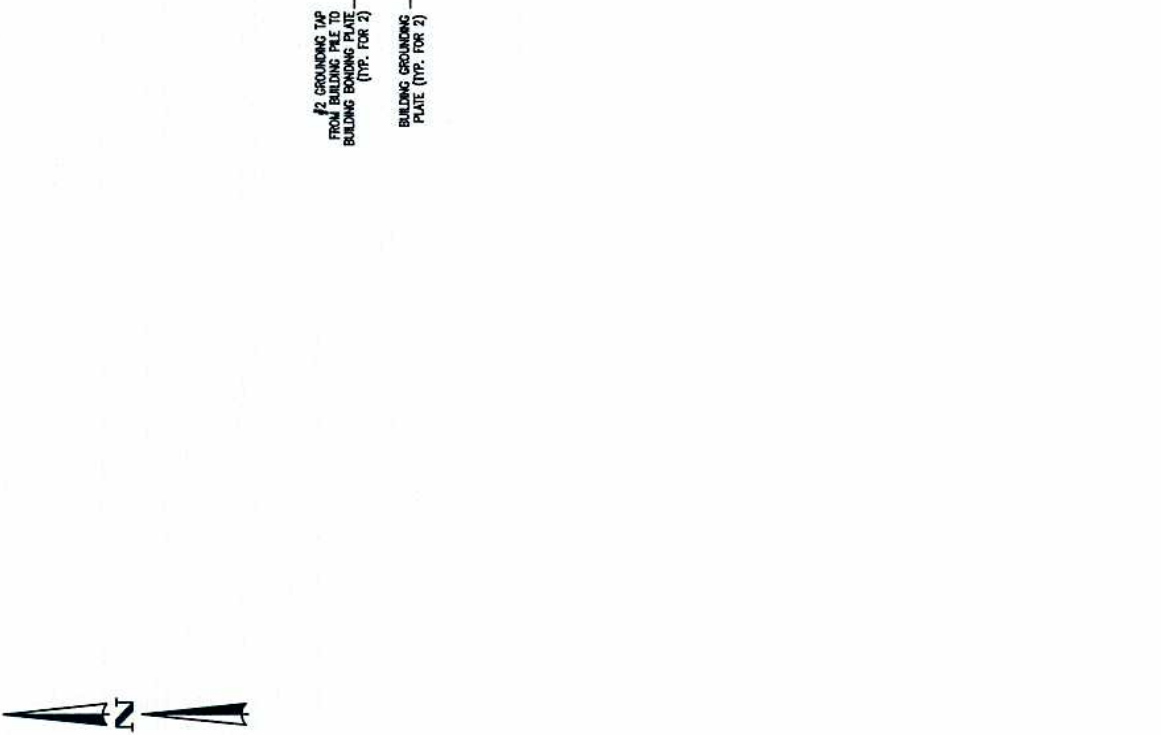
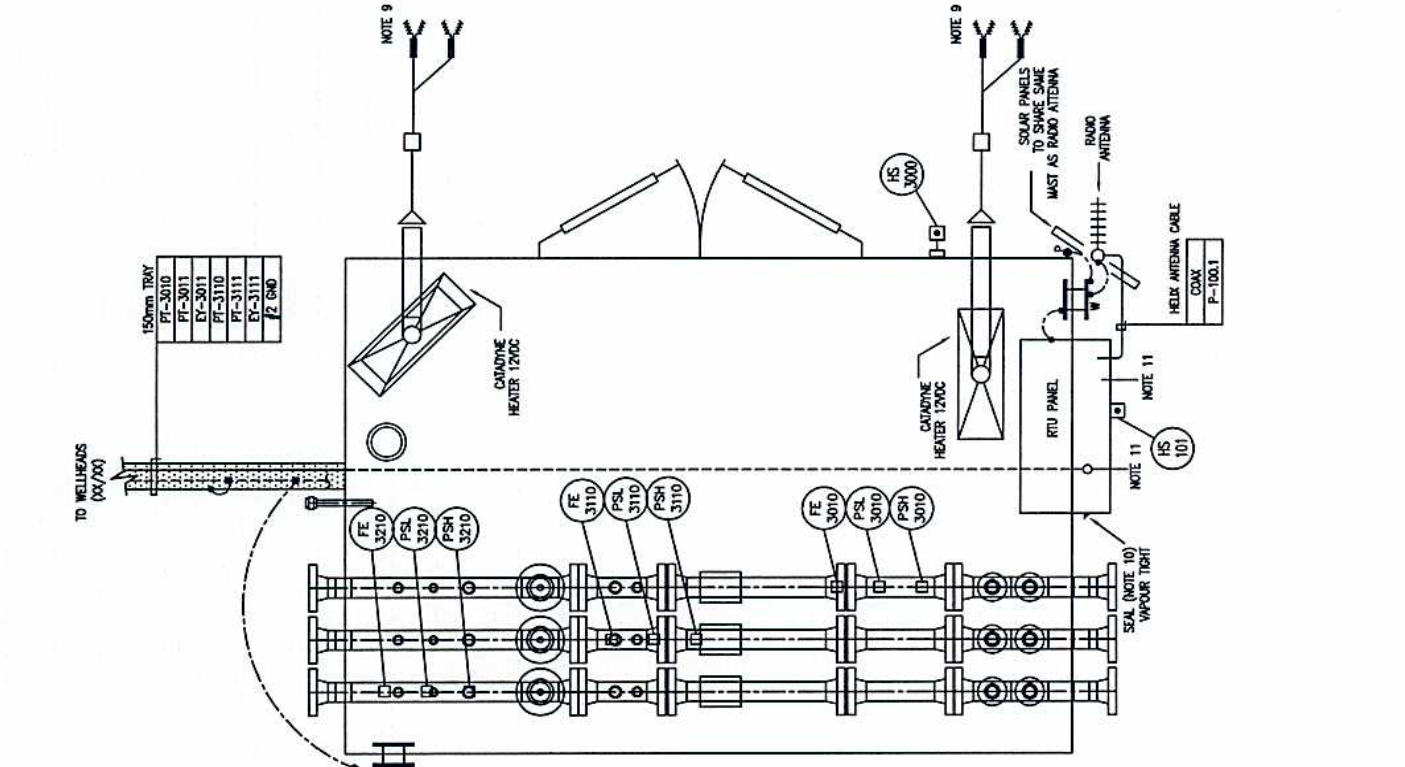
CLIENT: BIGHORN BU
 FILE NO.: BHT0148T

NO.	DATE	PROJECT DESCRIPTION	PROJ.	A/E	EPDM Co.	EPDM No.	APPD.	ISSUE STAGE	DATE	BY	CHKD.	APPD.	ENGINEER'S STAMP	PERMIT STAMP	REV. NUMBER
1	2011.11.18	RTU PANEL CONSTRUCTION	-	IBO	MAC INC.	2011-0132	-	Prin. (A)	-	-	-	-	-	-	1B-1
-	-	-	-	-	-	-	-	Rev. (B)	2011.11.18	DS	-	-	-	-	-
-	-	-	-	-	-	-	-	Const. (C)	-	-	-	-	-	-	-
-	-	-	-	-	-	-	-	As-Built (D)	-	-	-	-	-	-	-

CAUTION : READ BEFORE EXCAVATION
 ALL EXCAVATIONS MUST BE CARRIED OUT AS PER
 "ENCANA'S GROUND DISTURBANCE PRACTICE"

NOTES:

- 1. BOLTED TYPE CONNECTION - BURNDY SERVIT POST STYLE
- 2. CONNECTION TO STEEL FRAME
- 3. CONNECTION TO WALL OF BUILDING
- 4. COMPRESSION TYPE CONNECTION - BURNDY INTERGROUND OR APPROVED EQUAL
- 5. COMPRESSION TO BE MADE WITH BURNDY HYPRRESS.
- 6. ELECTRICAL INSTALLATIONS SHALL CONFORM TO THE FOLLOWING AREA CLASSIFICATIONS:
 - INSIDE BLDG. - CLASS 1, ZONE 1, GROUP IA & IB, T2C
 - OUTSIDE BLDG. - CLASS 1, ZONE 2, GROUP IA & IB, T2C
- 7. ALL ELECTRICAL EQUIPMENT IS TO BE GROUNDED TO BLDG GROUND PLATE IN ACCORDANCE WITH THE C.E.C. SECTION 10.
- 8. WIRES, INSTRUMENTS, AND ENCLOSURES SHALL BE TAGGED AS SHOWN.
- 9. CONDUIT RINGS SHALL BE THE RESPONSIBILITY OF THE ELECTRICAL CONTRACTOR UNLESS OTHERWISE NOTED. ALL CONDUIT INSTALLED SHALL BE RIGID, THREADED, ALUMINUM.
- 10. ELECTRICAL INSTALLATIONS SHALL BE AS PER THE LATEST EDITION OF THE C.E.C. AND APPLICABLE AMENDMENTS.
- 11. ALL GROUND CONNECTIONS TO BE SILICONE COATED.
- 12. SEALS SHALL BE INSTALLED AS REQUIRED BY THE C.E.C.
- 13. BUILDING PILES SHALL BE USED AS GROUND ELECTRODES AT LOCATIONS AS INDICATED ON DRAWING.
- 14. BATTERY LEADS USED WITHIN THE DESIGNATED HAZARDOUS LOCATIONS MUST BE TYPE STW OR SWM AND HAVE AN APPROPRIATE CONNECTION FOR THE LOCATION. THE BATTERY LEADS MUST EXTEND OUTSIDE OF THE DESIGNATED HAZARDOUS AREA BEFORE THE LEADS ARE CONNECTED. THIS DISTANCE IS MINIMUM 25' (7620) FROM THE BUILDING.
- 15. RTU PANEL CONDUIT, PIPING AND OTHER WALL PENETRATIONS SHALL BE SEALED TO PREVENT GAS MIGRATION.
- 16. ALL CONDUIT/CABLE CONNECTIONS TO PANEL MUST BE MADE OUTSIDE OF BUILDING IN CLASS 1/ZONE 2 AREA.



NO.	DATE	PROJECT DESCRIPTION	PROJ.	A/E	EPCM Co.	EPCM No.	APPO.	ISSUE STAGE	DATE	BY	CHKD.	APPD.	PERMIT STAMP	ENGINEER'S STAMP
1	2011.11.18	RTU PANEL CONSTRUCTION	-	TRD	M&G INC.	2011-0132	-	Permit (A)	2011.11.18	DE	-	-	-	-
-	-	-	-	-	-	-	-	Const. (C)	-	-	-	-	-	-
-	-	-	-	-	-	-	-	As-Built (B)	-	-	-	-	-	-
-	-	-	-	-	-	-	-	-	-	-	-	-	-	-
-	-	-	-	-	-	-	-	-	-	-	-	-	-	-

CAUTION : READ BEFORE EXCAVATION
 ALL EXCAVATIONS MUST BE CARRIED OUT AS PER
 "ENCANA'S GROUND DISTURBANCE PRACTICE"

BIGHORN TYPICALS
 VARIES
 PAD SITE
 VARIES
 SCALE 1:20
 DATE 2011-01-32
 EPCM MAC ENGINEERING INC.
 TITLE ELECTRICAL LAYOUT - POWER AND CONTROL
 TRIPLE WET METER SKID U-301
 AREA BIGHORN BU
 CUBES FILE NO. N
 BHT0148U

