

Parts List

ITEM	DESCRIPTION	QTY	SIZE	MAT
1	IGNITOR	1	MODEL A-301-G60 IGNITOR	SA-312-316L
2	BASE / MATING PLATE	2	1" THK x 19" O.D.	SA-36/44W
3	LOWER STACK	1	12" SCH STD	SA-106-B
4	CONCENTRIC REDUCER	1	12" x 8" SCH STD	SA-234-WPB
5	UPPER STACK	1	8" SCH STD	SA-106-B
6	FLARE TIP	1	8" SCH 10	SA-312-316L
7	INLET	1	8" SCH STD	SA-106-B
8	LP TIP	1	4" SCH STD	SA-312-316L
9	LP LINE	1	4" SCH STD	SA-106-B
10	ELBOW	1	4" SCH STD/45 DEG. L.R.	SA-234-WPB
11	BAFFLE PLATE	1	1/4" THK / C.T.S. @ 30 DEG.	SA-36/44W
12	FLANGE	1	8" SCH STD/150# RFWN	SA-105-N
13	FLANGE	1	4" SCH STD/150# RFWN	SA-105-N
14	PURGE SEAL	1	8"	SA-240-316L
15	FLAME RETENTION RING	1	8"	SA-240-316L
16	PURGE DEVICE	1	4"	SA-240-316L
17	TRUNNION	1	4" SCH STD/5" OD END PLATE	SA-106-B/SA-36/44W
18	SLIPSTREAM CW P.U PIPE	1	6" SCH 10 x 16" LG	SA-312-316L
19	TRUCK	1	IMACTRONIC "MAC" TRACK (SINGLE)	GALV. / SA-36/44W
20	PULLEY	1	STANDARD PULLEY ASSEMBLY	SA-36/44W
21	WINCH PLATE	1	TYPE A'	SA-36/44W
22	NAME PLATE GW MOUNTING BRACKET	1	3/16" THK	SA-36/44W
23	JUNCTION BOX CLIP	1	1/4" THK x 2" x 6" LG	SA-36/44W
24	STAT. BRACKET	1	3/8" THK x 4" x 5 1/8" LG	SA-36/44W
26	BRACKET (SLOT)	4	3/8" THK	SA-36/44W
27	HORSE SHOE	1	1/4" THK x 2" FLAT	SA-240-316L
28	STUD	4	1 1/8" DIA. x 6" LG	SA-193-B7
29	NUT	8	1 1/8" DIA.	SA-194-2H
30	DRAIN COUPLING	1	1/2" HALF COUPLING	SA-105N
31	BOLTS	2	5/8" DIA. x 2 1/2" LG	SA-GR.5-CAD
32	NUTS	4	5/8" DIA.	SA-GR.5-CAD
33	WASHER (FLAT)	4	5/8" DIA.	CAD

GENERAL NOTES:
 1. SURFACE PREPARATION: SSPC-SP6
 2. COATINGS: PRIME WITH CLOVERDALE RUSTEX PRIMER 71024 AT A MIN. OF 1.5 MILS DFT. TOP COAT WITH CLOVERDALE INDUSTRIAL ENAMEL 74851 (MEDIUM GREY) AT A MIN. OF 1.0 MILS DFT.
 3. APPROXIMATE SHIPPING WEIGHT: 2,230 lbs (1,014 Kg)
 4. ANCHOR RODS AND FOUNDATION ARE NOT INCLUDED.
 5. ALL TEST CERTIFICATES AVAILABLE ON PROCESS PIPING MATERIALS.
 6. MILL TEST CERTIFICATE TO BE TWO HOLED
 7. MINIMUM FUEL GAS PURGE RATE FOR A 8" PURGE REDUCTION DEVICE IS 50 SCFH.
 8. MINIMUM FUEL GAS PURGE RATE FOR A 4" PURGE REDUCTION DEVICE IS 15 SCFH.
 9. FABRICATION TOLERANCES AS PER OSP 3.3.3.
 THE FOLLOWING ARE THE FABRICATION TOLERANCES UNDER 5ft:
 IMPERIAL LINEAR DIMENSIONS.....1/8 INCH
 METRIC LINEAR DIMENSIONS.....3 mm
 ANGULAR DIMENSIONS.....1.0 DEGREES

DESIGN NOTES:
 DESIGN WIND SPEED: 80 MPH
 1/8" CORROSION ALLOWANCE
BASE LOADS:
 MOMENT: 18 KIP-FT
 SHEAR: 1 KIP
 VERTICAL: 2.9 KIP

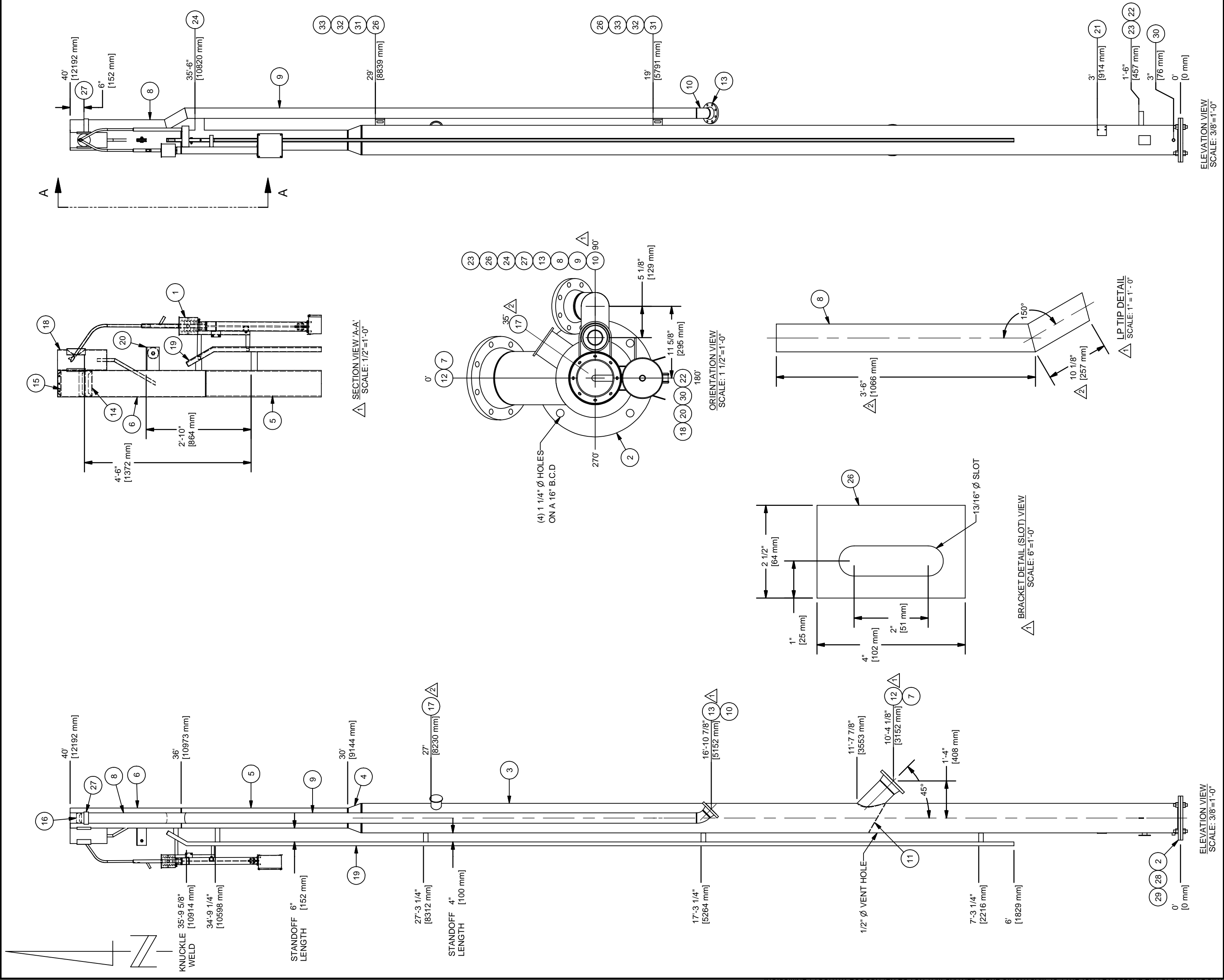
REV	DATE	DESCRIPTION	BY
0	29-AUG-03	APPROVAL	CGW
1	04-SEPT-03	FABRICATION	JOW
2	23-SEPT-03	AS-BUILT	JOW

MACTRONIC
ENERFLEX
 RED DEER, ALBERTA, CANADA

CLIENT: ENCANA

LOCATION: HYTHE GAS PLANT PO # 0319376
 LSD: c/29-A93-P-8 TAG #
 TITLE: 8" DIA. x 4" DIA. x 40' - 0" HIGH
 DUAL FREESTANDING FLARE STACK

DRAWN BY: CGW CHECKED BY: DATE: 29-AUG-03
 APP. BY: PROJECT BY: SCALE: AS SHOWN
 JOB ORDER #: B600184 DRAWING NUMBER: 5998-FSB
 REV 2



THIS DRAWING IS THE EXCLUSIVE PROPERTY OF MACTRONIC ENERFLEX AND MAY NOT BE REPRODUCED WITHOUT PERMISSION.