



Grand Prairie Storage Yard Equipment Returns

1136

White sections to be filled in completely by requester

Date: <u>Sept 2, 2014</u>	AFE: <u>11146231</u>
Inspector: <u>Joe Stacey</u>	LSD: <u>1-35-60-06w6</u>
Phone: <u>780-518-0109</u>	Condition Code: A - New Value (NV), B - 75% OF NV, C - 50% of NV, D - 25% of NV, E - Deemed Scrap <u>D</u>

Reason for Return

Return to Inventory <input type="checkbox"/>	Storage <input checked="" type="checkbox"/>	Other <input type="checkbox"/>
Comments: <u>To be used on AFE- 14182430. Duvernay Jet Pump trial.</u>	Approved by: (sign and date) 	
Complete this section if requesting storage or other. Indicate the date, location and AFE (if known) the equipment will be used.	AFE: <u>14182430</u>	
Date to be used:	LSD: <u>6-32-63-22w5</u>	

Quantity	Description	Drwg & Manuals, Asset Papers	S/N, Heat, Mfg, etc.	MSDS (Identify in comments)
<u>1</u>	<u>Fuel gas conditioning strip with RTU, separator, and filter vessels.</u>	<u>N/A</u>		
			<u>vessel S/N's.</u>	
	<u>30 FT Long</u>	<u>1440-Separator</u>	<u>S/N - 08.1000 V.S.</u>	
	<u>10 FT wide</u>	<u>V-120 Dessicant filter</u>	<u>S/N - 42833-55C</u>	
	<u>11 FT High</u>	<u>V-130 Dessicant filter</u>	<u>S/N - 42833-55D</u>	
		<u>V-150 Coalescing Filter</u>	<u>S/N - 3049D</u>	
		<u>V-120 ASSET #</u>	<u>2005586</u>	
		<u>V-130 ASSET #</u>	<u>2005587</u>	
		<u>V-150 ASSET #</u>	<u>2007006</u>	
		<u>Building ASSET #</u>	<u>2007005</u>	

Transporter (Into Yard): <u>Capstan Hauling</u>	Name (Print): <u>X Keith Charles</u>
Date: <u>Sept 2, 2014</u>	Name (Sign):

To be completed by GPS Staff

Date Shipped Out:
MR Number:

- An Equipment Return must be prepared for every request to return or store equipment/material at the Grande Prairie Storage Yard. Excluding pipe. Please refer to Pe Ben GP Pipe Return Policy or contact encana.pipe@encana.com
- Check the reason it is being returned to the yard. If it is in new condition and being returned to inventory, new/used equipment to be used at a different location or other with a business case in the comments section
- Include quantity, description, serial number, heat number (as applicable), drawings, manufacturer. Indicate any controllable product that may be contained and the MSDS that is required. *You will be contacted when the return is reviewed with an authorization.

*You will be contacted when the return is reviewed with an authorization.



ATTENTION ENCANA CONSTRUCTION INSPECTORS

Unit #

Please verify equipment data from attached report once on-site and collect and record any additional equipment data. Return paperwork to Construction Admin or Operations Field Technician when complete. Any questions should be directed to equipment@encana.com or field representative.

**** PLEASE NOTE: this report does not replace Pressure Equipment Documentation ****
Example: New, replaced, relocated Vessel Checklist

Check here to verify stainless steel asset tags are present on equipment and asset numbers match the attached report

Surface LCD:	_____	NAME:	_____
Bottom Hole UWI:	_____	SIGNATURE:	_____
Commission Date:	_____	DATE:	_____
EPCM Project #	_____		

Encana Asset No: 2007006
Description: FILTER VESSEL, V-150
Location: DRILLING & COMPLETIONS
Classification: PV / PVFV
Classification Desc: FILTER VESSEL
Location Hierarchy: 001 / CDBBU / DB-EAST
Status: SPARE
Vendor: _____
Package Unit #: _____
JDE PO#: _____
Serial Number: 3049D
Model Number: PORTABLE
Model Year: 2008
Manufacturer: ESS CORP

ATTRIBUTE DATA - MANDATORY FIELDS



Description	Value	Unit Of Measure
Free Text Field		
P&ID Tag #	V-150	
A#		
BCSA #		
NB #		
CRN #	U3730.213	
Shell MAWP (psi)	275	PSI
Shell MAWT (F)	136	DEG F
Shell MDMT (F)		DEG F
Tube MAWP (psi)		PSI
Tube MAWT (F)		DEG F
Tube MDMT (F)	-20	DEG F
Capacity (m3)		M3
Length (in)	68	INCHES

Initials_____



Unit #:

ASSET MASTER - MANDATORY FIELDS

Encana Asset No: 2007009
Description: PSV, 20210C, PV
Location: DRILLING & COMPLETIONS
Classification: PP / PPSV
Classification Desc: PSV
Location Hierarchy: 001 / CDBBU / DB-EAST
Parent Description: FILTER VESSEL, V-150
Status: SPARE
Serial Number: 552492-24-KE
Model Number: 27CA33-M20
Model Year: _____
Manufacturer: FARRIS
Vendor: _____
Package Unit #: _____

ATTRIBUTE DATA - MANDATORY FIELDS

Description	Value	Unit Of Measure
Free Text Field	_____	
P&ID Tag #	20210C	
Capacity	184	SCFM
Set Pressure (psi)	140	PSI
Set Pressure (kPa)	965	KPA
Set Pressure not in PSI or KPA	_____	
CRN #	0G11969.5C	
Inlet Size (in)	1	INCHES
Outlet Size (in)	1	INCHES
PSV Protects	PV	
Pressure Safety Valve Style	CONVENTIONAL	

Initials _____



ATTENTION ENCANA CONSTRUCTION INSPECTORS

Unit #

Please verify equipment data from attached report once on-site and collect and record any additional equipment data. Return paperwork to Construction Admin or Operations Field Technician when complete. Any questions should be directed to equipment@encana.com or field representative.

**** PLEASE NOTE: this report does not replace Pressure Equipment Documentation ****
Example: New, replaced, relocated Vessel Checklist

Check here to verify stainless steel asset tags are present on equipment and asset numbers match the attached report

Surface LCD:	_____	NAME:	_____
Bottom Hole UWI:	_____	SIGNATURE:	_____
Commission Date:	_____	DATE:	_____
EPCM Project #	_____		

Encana Asset No: 2005586
Description: SEPARATOR, V-120, A0450934
Location: DRILLING & COMPLETIONS
Classification: PV / PVSP
Classification Desc: SEPARATOR
Location Hierarchy: 001 / CDBBU / DB-EAST
Status: SPARE
Vendor: _____
Package Unit #: _____
JDE PO#: _____
Serial Number: 42833.55C
Model Number: PORTABLE
Model Year: 2002
Manufacturer: NATCO CANADA LTD

ATTRIBUTE DATA - MANDATORY FIELDS



Description	Value	Unit Of Measure
Free Text Field		
P&ID Tag #	V-120	
Separator # Phases		
A#	A0450934	
BCSA #		
NB #		
CRN #	P9717.2	
Shell MAWP (psi)	1440	PSI
Shell MAWT (F)	129	DEG F
Shell MDMT (F)	-20	DEG F
Tube MAWP (psi)		PSI
Tube MAWT (F)		DEG F
Tube MDMT (F)		DEG F
Capacity (m3)		M3
Length (in)	108	INCHES

Initials _____



Unit #:

ASSET MASTER - MANDATORY FIELDS

Encana Asset No: 2007013
Description: PSV, 19937C, PV
Location: DRILLING & COMPLETIONS
Classification: PP / PPSV
Classification Desc: PSV
Location Hierarchy: 001 / CDBBU / DB-EAST
Parent Description: SEPARATOR, V-120, A0450934
Status: SPARE
Serial Number: A67007
Model Number: 91-17D51T13E1
Model Year: _____
Manufacturer: MERCER VALVE CO.
Vendor: _____
Package Unit #: _____

ATTRIBUTE DATA - MANDATORY FIELDS

Description	Value	Unit Of Measure
Free Text Field	_____	
P&ID Tag #	19937C	
Capacity	2020	SCFM
Set Pressure (psi)	990	PSI
Set Pressure (kPa)	6826	KPA
Set Pressure not in PSI or KPA	_____	
CRN #	2606.5C	
Inlet Size (in)	1	INCHES
Outlet Size (in)	1	INCHES
PSV Protects	PV	
Pressure Safety Valve Style	_____	

Initials_____



ATTENTION ENCANA CONSTRUCTION INSPECTORS

Unit #

Please verify equipment data from attached report once on-site and collect and record any additional equipment data. Return paperwork to Construction Admin or Operations Field Technician when complete. Any questions should be directed to equipment@encana.com or field representative.

**** PLEASE NOTE: this report does not replace Pressure Equipment Documentation ****
Example: New, replaced, relocated Vessel Checklist

Check here to verify stainless steel asset tags are present on equipment and asset numbers match the attached report

Surface LCD:	_____	NAME:	_____
Bottom Hole UWI:	_____	SIGNATURE:	_____
Commission Date:	_____	DATE:	_____
EPCM Project #	_____		

Encana Asset No: 2005587
Description: FILTER VESSEL, V-130, A0450935
Location: DRILLING & COMPLETIONS
Classification: PV / PVFV
Classification Desc: FILTER VESSEL
Location Hierarchy: 001 / CDBBU / DB-EAST
Status: SPARE
Vendor: _____
Package Unit #: _____
JDE PO#: _____
Serial Number: 42833.55D
Model Number: PORTABLE
Model Year: 2002
Manufacturer: NATCO CANADA LTD

ATTRIBUTE DATA - MANDATORY FIELDS



Description	Value	Unit Of Measure
Free Text Field		
P&ID Tag #	V-130	
A#	A0450935	
BCSA #		
NB #		
CRN #	P9717.2	
Shell MAWP (psi)	1440	PSI
Shell MAWT (F)	129	DEG F
Shell MDMT (F)	-20	DEG F
Tube MAWP (psi)		PSI
Tube MAWT (F)		DEG F
Tube MDMT (F)		DEG F
Capacity (m3)		M3
Length (in)	90	INCHES

Initials_____



Unit #:

ASSET MASTER - MANDATORY FIELDS

Encana Asset No: 2007011
Description: PSV, 19936C, PV
Location: DRILLING & COMPLETIONS
Classification: PP / PPSV
Classification Desc: PSV
Location Hierarchy: 001 / CDBBU / DB-EAST
Parent Description: FILTER VESSEL, V-130, A0450935
Status: SPARE
Serial Number: A67005
Model Number: 91-17D51T14E1
Model Year: _____
Manufacturer: MERCER VALVE CO.
Vendor: _____
Package Unit #: _____

ATTRIBUTE DATA - MANDATORY FIELDS

Description	Value	Unit Of Measure
Free Text Field	_____	
P&ID Tag #	19936C	
Capacity	2020	SCFM
Set Pressure (psi)	990	PSI
Set Pressure (kPa)	6826	KPA
Set Pressure not in PSI or KPA	_____	
CRN #	0G2606.5C	
Inlet Size (in)	1	INCHES
Outlet Size (in)	1	INCHES
PSV Protects	PV	
Pressure Safety Valve Style	_____	

Initials_____



ATTENTION ENCANA CONSTRUCTION INSPECTORS

Unit #

Please verify equipment data from attached report once on-site and collect and record any additional equipment data. Return paperwork to Construction Admin or Operations Field Technician when complete. Any questions should be directed to equipment@encana.com or field representative.

**** PLEASE NOTE: this report does not replace Pressure Equipment Documentation ****
Example: New, replaced, relocated Vessel Checklist

Check here to verify stainless steel asset tags are present on equipment and asset numbers match the attached report

Surface LCD: _____ NAME: _____
Bottom Hole UWI: _____ SIGNATURE: _____
Commission Date: _____ DATE: _____
EPCM Project # _____

Encana Asset No: 2007005
Description: BUILDING, PRODUCTION / PROCESS
Location: DRILLING & COMPLETIONS
Classification: BU
Classification Desc: BUILDING
Location Hierarchy: 001 / CDBBU / DB-EAST
Status: SPARE
Vendor: _____
Package Unit #: _____
JDE PO#: _____
Serial Number: _____
Model Number: _____
Model Year: _____
Manufacturer: _____

ATTRIBUTE DATA - MANDATORY FIELDS

Description	Value	Unit Of Measure
Free Text Field	_____	
P&ID Tag #	_____	
Building Primary Purpose	PRODUCTION / PROCESS	
Building Length	_____	M
Building Width	_____	M
Building Height	_____	M

Initials _____



Unit #:

ASSET MASTER - MANDATORY FIELDS

Encana Asset No: 2005586
Description: SEPARATOR, V-120, A0450934
Location: DRILLING & COMPLETIONS
Classification: PV / PVSP
Classification Desc: SEPARATOR
Location Hierarchy: 001 / CDBBU / DB-EAST
Parent Description: BUILDING, PRODUCTION / PROCESS
Status: SPARE
Serial Number: 42833.55C
Model Number: PORTABLE
Model Year: 2002
Manufacturer: NATCO CANADA LTD
Vendor: _____
Package Unit #: _____

ATTRIBUTE DATA - MANDATORY FIELDS

Description	Value	Unit Of Measure
Free Text Field	_____	
P&ID Tag #	V-120	
Separator # Phases	_____	
A#	A0450934	
BCSA #	_____	
NB #	_____	
CRN #	P9717.2	
Shell MAWP (psi)	1440	PSI
Shell MAWT (F)	129	DEG F
Shell MDMT (F)	-20	DEG F
Tube MAWP (psi)	_____	PSI
Tube MAWT (F)	_____	DEG F
Tube MDMT (F)	_____	DEG F
Capacity (m3)	_____	M3
Length (in)	108	INCHES

Initials_____



Unit #:

ASSET MASTER - MANDATORY FIELDS

Encana Asset No: 2005587
Description: FILTER VESSEL, V-130, A0450935
Location: DRILLING & COMPLETIONS
Classification: PV / PVFV
Classification Desc: FILTER VESSEL
Location Hierarchy: 001 / CDBBU / DB-EAST
Parent Description: BUILDING, PRODUCTION / PROCESS
Status: SPARE
Serial Number: 42833.55D
Model Number: PORTABLE
Model Year: 2002
Manufacturer: NATCO CANADA LTD
Vendor: _____
Package Unit #: _____

ATTRIBUTE DATA - MANDATORY FIELDS

Description	Value	Unit Of Measure
Free Text Field	_____	
P&ID Tag #	V-130	
A#	A0450935	
BCSA #	_____	
NB #	_____	
CRN #	P9717.2	
Shell MAWP (psi)	1440	PSI
Shell MAWT (F)	129	DEG F
Shell MDMT (F)	-20	DEG F
Tube MAWP (psi)	_____	PSI
Tube MAWT (F)	_____	DEG F
Tube MDMT (F)	_____	DEG F
Capacity (m3)	_____	M3
Length (in)	90	INCHES

Initials_____



Unit #:

ASSET MASTER - MANDATORY FIELDS

Encana Asset No: 2007006
Description: FILTER VESSEL, V-150
Location: DRILLING & COMPLETIONS
Classification: PV / PVFV
Classification Desc: FILTER VESSEL
Location Hierarchy: 001 / CDBBU / DB-EAST
Parent Description: BUILDING, PRODUCTION / PROCESS
Status: SPARE
Serial Number: 3049D
Model Number: PORTABLE
Model Year: 2008
Manufacturer: ESS CORP
Vendor: _____
Package Unit #: _____

ATTRIBUTE DATA - MANDATORY FIELDS

Description	Value	Unit Of Measure
Free Text Field	_____	
P&ID Tag #	V-150	
A#	_____	
BCSA #	_____	
NB #	_____	
CRN #	U3730.213	
Shell MAWP (psi)	275	PSI
Shell MAWT (F)	136	DEG F
Shell MDMT (F)	_____	DEG F
Tube MAWP (psi)	_____	PSI
Tube MAWT (F)	_____	DEG F
Tube MDMT (F)	-20	DEG F
Capacity (m3)	_____	M3
Length (in)	68	INCHES

Initials _____



Unit #:

ASSET MASTER - MANDATORY FIELDS

Encana Asset No: 2007009
Description: PSV, 20210C, PV
Location: DRILLING & COMPLETIONS
Classification: PP / PPSV
Classification Desc: PSV
Location Hierarchy: 001 / CDBBU / DB-EAST
Parent Description: FILTER VESSEL, V-150
Status: SPARE
Serial Number: 552492-24-KE
Model Number: 27CA33-M20
Model Year: _____
Manufacturer: FARRIS
Vendor: _____
Package Unit #: _____

ATTRIBUTE DATA - MANDATORY FIELDS

Description	Value	Unit Of Measure
Free Text Field	_____	
P&ID Tag #	20210C	
Capacity	184	SCFM
Set Pressure (psi)	140	PSI
Set Pressure (kPa)	965	KPA
Set Pressure not in PSI or KPA	_____	
CRN #	0G11969.5C	
Inlet Size (in)	1	INCHES
Outlet Size (in)	1	INCHES
PSV Protects	PV	
Pressure Safety Valve Style	CONVENTIONAL	

Initials _____



Unit #:

ASSET MASTER - MANDATORY FIELDS

Encana Asset No: 2007011
Description: PSV, 19936C, PV
Location: DRILLING & COMPLETIONS
Classification: PP / PPSV
Classification Desc: PSV
Location Hierarchy: 001 / CDBBU / DB-EAST
Parent Description: FILTER VESSEL, V-130, A0450935
Status: SPARE
Serial Number: A67005
Model Number: 91-17D51T14E1
Model Year: _____
Manufacturer: MERCER VALVE CO.
Vendor: _____
Package Unit #: _____

ATTRIBUTE DATA - MANDATORY FIELDS

Description	Value	Unit Of Measure
Free Text Field	_____	
P&ID Tag #	19936C	
Capacity	2020	SCFM
Set Pressure (psi)	990	PSI
Set Pressure (kPa)	6826	KPA
Set Pressure not in PSI or KPA	_____	
CRN #	0G2606.5C	
Inlet Size (in)	1	INCHES
Outlet Size (in)	1	INCHES
PSV Protects	PV	
Pressure Safety Valve Style	_____	

Initials_____



Unit #:

ASSET MASTER - MANDATORY FIELDS

Encana Asset No: 2007013
Description: PSV, 19937C, PV
Location: DRILLING & COMPLETIONS
Classification: PP / PPSV
Classification Desc: PSV
Location Hierarchy: 001 / CDBBU / DB-EAST
Parent Description: SEPARATOR, V-120, A0450934
Status: SPARE
Serial Number: A67007
Model Number: 91-17D51T13E1
Model Year: _____
Manufacturer: MERCER VALVE CO.
Vendor: _____
Package Unit #: _____

ATTRIBUTE DATA - MANDATORY FIELDS

Description	Value	Unit Of Measure
Free Text Field	_____	
P&ID Tag #	19937C	
Capacity	2020	SCFM
Set Pressure (psi)	990	PSI
Set Pressure (kPa)	6826	KPA
Set Pressure not in PSI or KPA	_____	
CRN #	2606.5C	
Inlet Size (in)	1	INCHES
Outlet Size (in)	1	INCHES
PSV Protects	PV	
Pressure Safety Valve Style	_____	

Initials_____

CERTIFIED BY



MAWP 1440 PSI AT 100 °F

MDMT -20 °F AT 1440 PSI

SERIAL NO. 03.1000 VS YEAR BUILT 2008

CRN U4802.213 (A) 582907

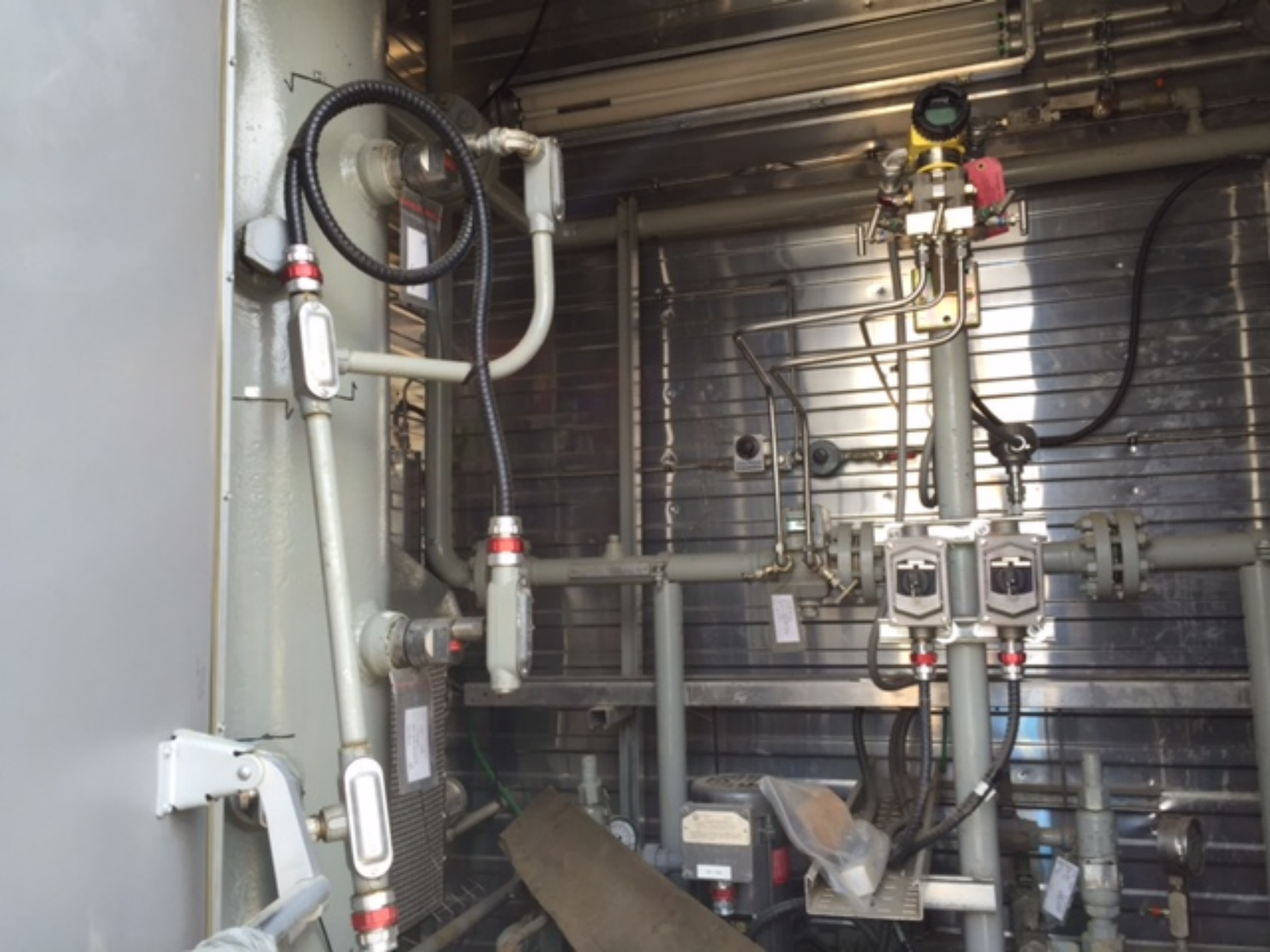
VESSEL TYPE VERTICAL SEPARATOR

SHELL SA-106-B

THICKNESS 0.844"

TAG V-100

5982 - 86 AVE. S.E.



CERTIFIED AND MANUFACTURED BY:

NATCO CANADA

EDMONTON, ALBERTA, CANADA

W

SERIAL NO. 42833-550

RT-1

C.R.N. P9717.20

HT

YEAR BUILT 2002

MAWP 1440 PSI @ 130 °F

9928 KPA @ 54 °C

MDMT -20 °F @ 1440 PSI

-29 °C @ 9928 KPA

TEST PRESSURE 2160 PSI 14893 KPA

SHOP ORDER: 42833-550

VESSEL TYPE: TEST DRT

DESSICANT FILTER V-120

450934

CERTIFIED AND MANUFACTURED BY:

NATCO CANADA

EDMONTON, ALBERTA, CANADA

W

SERIAL NO. 42833-550

RT-1

C.R.N. P9717.20

HT

YEAR BUILT 2002

MAWP 1440 PSI @ 130 °F

9928 KPA @ 54 °C

MDMT -20 °F @ 1440 PSI

-29 °C @ 9928 KPA

TEST PRESSURE 2160 PSI 14893 KPA

SHOP ORDER: 42833-550

VESSEL TYPE: TEST DRT

DESSICANT FILTER V-120

450934

REQUIRES DESI-DRY HPA

REPAIRED By

NATCO CANADA LTD.
CALGARY, ALBERTA, CANADA

MAWP 1440 PSI @ 130 °F

W

9928 KPA @ 54 °C

RT-1

HT

MDMT 320 °F @ 1440 PSI

9928 °C @ 9928 KPA

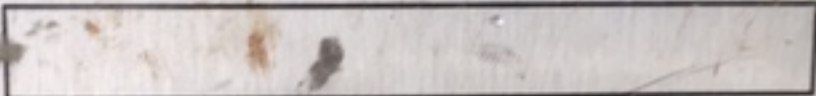
SERIAL NO. 42833-550 YR. 2009

CRN 9717.2

SH/MAT _____ TH. _____ IN. _____ MM.

HD/MAT _____ TH. _____ IN. _____ MM.

CORR. ALL. _____ IN. _____ MM.



CERTIFIED AND MANUFACTURED BY:

NATCO CANADA

EDMONTON, ALBERTA, CANADA

W

SERIAL NO. 42833-550

RT-1

C.R.N. P9717.20

YEAR BUILT 2002

MAWP 1440 PSI @ 130 °F

9928 KPA @ 54 °C

MDMT -20 °F @ 1440 PSI

-29 °C @ 9928 KPA

TEST PRESSURE 2160 PSI 14893 KPA

SHOP ORDER: 42833-550

VESSEL TYPE: DRY AIR

DESSICANT FILTER V-130

450935

REQUIRES DESI-DRY C

REPAIRED By

NATCO CANADA LTD.
CALGARY, ALBERTA, CANADA

MAWP _____ PSI @ 130 °F
_____ KPA @ 54 °C

W _____
RT- _____

MDMT 20 °F @ 1440 PSI
29 °C @ 99 KPA

SERIAL NO. 42833-55D YR. 2009

CRN P 9717.2

SH/MAT _____ TH. _____ IN. _____ MM.

HD/MAT _____ TH. _____ IN. _____ MM.

CORR. ALL. _____ IN. _____ MM.

CERTIFIED BY:

ESS CORP.



RES

M.A.W.P. 275 PSI AT 100 °F
M.A.E.W.P. / °F AT / PSI
M.D.M.T. -20 °F AT 275 PSI
S/N 3049D YEAR 2008

CRN U3730-213

MODEL # CLV8-36L-3F-CS-275

Phone: 905-696-9292

Fax: 905-696-8046



MANUFACTURED FOR

Peco Filters Ltd.

1351 Hastings Circle SE

Calgary, AB T2G 4G8

www.pecoequipment.com

PECO MODEL

89-1-336-8-275-3F

PECO ELEMENT NO.

NGGC-336

BUCKET NO.

BUNA 446

