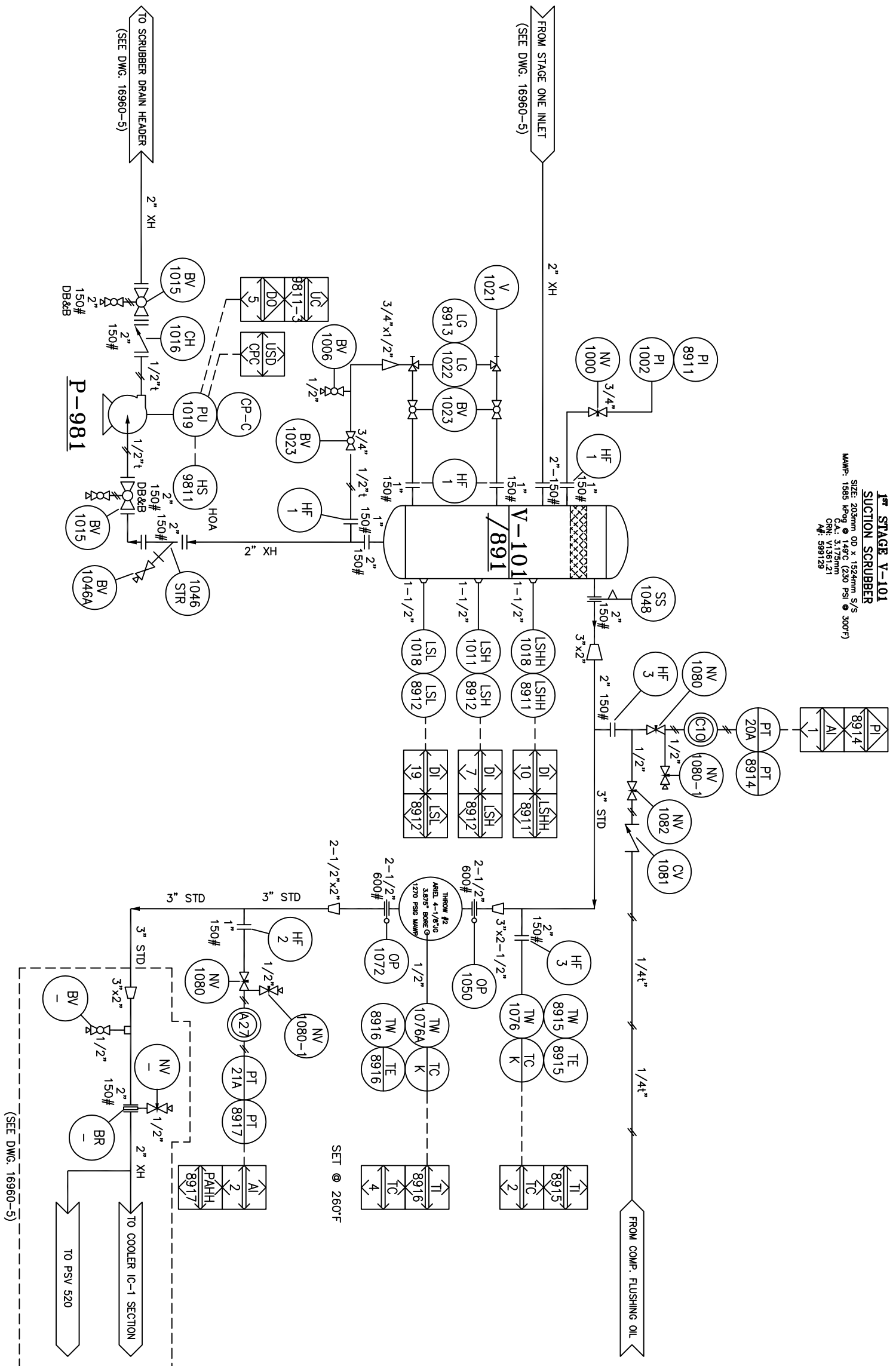


BILL OF MATERIAL

NOTE: ITEM NO. = FIRST DIGIT (DWG REF.), LAST TWO DIGITS (Item No.)

ITEM	PART NO.	QTY.	DESCRIPTION
1000	803687	1	VALVE, NEEDLE, 3/4 X (31/2) MAF NPT, 6000 PSIG WP, 316SS.
1002	802830	1	CENTURY (QM7L1M64TDNT) MULTI-PORT EXTENDED BODY
8911	NPT OB	1	NPT OB MNT CONN, PN 233.53.063-2.5-2C-80 CBN 0-2009PSIG
1006	803774	1	VALVE, BALL, 1/2"-3000CL, NPT, RP, LH, NACE, NUTRON, 5A-13-R05530S2
1011	804460	1	ENDRESS+HAUSER LEVEL SWITCH, 1" NPT, 6" INSERTION, DESIRTY SENSING, (PN: FTL51-SGNZC8E3P)(MUST USE WITH PNB04461)
1015	804350	2	VALVE, BALL, 2" 150# RF RP TRUNNION, DBB-NACE, KF (E3758-829G811)
1016	804355	1	VALVE, CHECK, PISTON, 2"-150CL, RF, NACE, NEMCO (41F-F54/3-INT)
1018	804930	2	LEVEL SWITCH, LINC, MODEL # 1471-01 1-1/2" X"
8911/8912	804101	1	PUMP DIAPHRAGM, 3/4" NPT, WANNER HYDRA-CELL (003), C/W
CP-C	803005	1	WEG TEFC MOTOR, 5HP, 120V/1/60HZ 184T FRAME, CBN BASE, PLUG & GUARD
1021	803005	1	VALVE, GAUGE, SET, 3/4" W, VESSEL, X 1/2" F, DRAIN, X 1/2" F, GAUGE, NPT, NACE, QUALITY 0149NACE/TFE
1022	801361	1	GAUGE, LEVEL, SINGLE SECTION, REFLEX, 10.25" VISIBLE LENGTH,
8913	803965	3	VALVE, BALL, 3/4"-3000CL, RP, LH, NACE, NUTRON (T3-R07S30S)
1046	804354	1	Y STRAINER, 2" 150# RF, 1/8" 304SS, ALTA (NVF 150)
1046A	803774	1	VALVE, BALL, 1/2"-3000CL, NPT, RP, LH, NACE, NUTRON, 5A-13-R05530S2
1048	801989	1	VALVE, BALL, 1/2" X 150CL, NPT, RP, LH, NACE, NUTRON, 5A-13-R05530S2
1050	804700	1	PLATE ORIFICE, 1.3" 600# SCH80, RF, 1/8" THICK, 1.25" ID BORE, 316SS
1072	804700	1	PLATE ORIFICE, 1.3" 600# SCH80, RF, 1/8" THICK, 1.25" ID BORE, 316SS
1076	804454	1	THERMOWELL, 3/4" X 1/2" NPT, 8" STEM LENGTH, 6" U, 0.280 BORE, 316SS
8915	803690	1	PN&L PTW-660
1076A/	8916	1	THERMOWELL, 1/2" X 1/2" NPT, 6" STEM LG, 4-1/2" U.0.280 BORE, 316SS
8916	803687	2	VALVE, NEEDLE, 3/4 X (31/2) MAF NPT, 6000 PSIG WP, 316SS.
1080	803625	2	CENTURY (QM7L1M64TDNT) MULTI-PORT EXTENDED BODY
1080-1	803625	2	VALVE, NEEDLE, 1/2 X 1/2 MAF NPT, 6000 PSIG WP, 316SS.
1081	803294	1	CHECK VALVE, 1/4" X 1/4" T, 1" PSIG CRACKING PRESSURE, SS.
1082	803625	1	VALVE, NEEDLE, 1/2 X 1/2 MAF NPT, 6000 PSIG WP, 316SS.
HF-1	803875	2	CENTURY (QM2-1-M44TDNT)
HF-2	803875	2	FLANGE, RF, HUBBED BLIND, 1-150CL C/W 3/4" NPT TAP, SA105N
HF-3	803876	2	FLANGE, RF, HUBBED BLIND, 2-150CL C/W 3/4" NPT TAP, SA105N
8914	PANEL MNTD	2	PRESSURE TRANSMITTER, 0-414 KPa, ROSEMOUNT
8915	804454	1	THERMOWELL, TYPE K, 8" PROBE, 30" SS ARMOUR LEAD, PHIC (PN 2008-6-K-380) C/W CONNECTORS M & F (1013-K, 1085-K)
8916	804227	1	THERMOWELL, TYPE K, TYPE, 30" LEAD (PN: K48G-006-00-18-F3836G-2)
8917	PANEL MNTD	1	PRESSURE TRANSMITTER, 0-1034 KPa, ROSEMOUNT



**1<sup>ST</sup> STAGE V-101**  
**SUCTION SCRUBBER**  
 SIZE: 203mm OD x 1524mm S/S  
 NAME: 1585 Revg 0149C (230 PSI @ 300°F)  
 CAT: V17.0mm  
 CRI: V17.0mm  
 M#: 599129

TAG	DESCRIPTION	SIZE(VOLTAGE)	TAG	DESCRIPTION	SIZE(VOLTAGE)

CUSTOMER CONNECTIONS

GENERAL NOTES

- PROCESS INSTRUMENT LINES: 316SS 0.065" WALL TUBING C/W SWAGelok 316SS FICK FERRULE & 316SS FRONT FERRULE UNLESS OTHERWISE NOTED
- UTILITY INSTRUMENT LINES: 316SS 0.065" WALL TUBING C/W SWAGelok 316SS FICK FERRULE & 316SS FRONT FERRULE UNLESS OTHERWISE NOTED
- INSTRUMENT MEDIUM: CLEAN, DRY AIR
- ALL PROCESS PIPING TO BE PER ENCAMYA PIPING SPEC. ECA-T-3 FOR LOW TEMP. WATERWORK PIPING / FITTINGS TO BE FABRICATED USING CUPPER-NICKEL ALLOY EXHAUST SPLICING, ETC.)
- ALL FITTINGS FOR SOUP PIPING LESS THAN OR EQUAL TO 1-1/2" TO BE SKW.
- CORROSION ALLOWANCE: 1/8" (0.125") (PROCESS ONLY)
- AREA CLASSIFICATION: CLASS 1, ZONE 2 (FE STUDY BY NCG)
- VENT TO SAFE AREA. SAFE AREA SHALL BE DIRECTED TO SAFE AREA. SAFE AREA SHALL BE DIRECTED TO SAFE AREA. SAFE AREA SHALL BE DIRECTED TO SAFE AREA.
- FINISH: CLOVERLEAF F34 INDUSTRIAL ENAMEL (WARM GREY)
- PROCESS HARDWARE: GASKETS: FLEXITALIC FLEXICARB (GREY STRIPE)

**AS BUILT**

BY: \_\_\_\_\_

DATE: \_\_\_\_\_

**NCG COMPRESSION SOLUTIONS**

STAGE ONE PRESSURE VESSEL SYSTEM  
 AREL J04/2/ BAUDR 50HP\_AXC 32PH  
 3 STAGE, 0-5% SOUR NATURAL GAS COMPRESSOR PACKAGE

ENCANYA CORPORATION  
 SATURN PHASE II, BC  
 LSD: 09-27-079-17 WGM  
 30-DEC-09 31-JUL-10  
 07-JUN-10 DATE: 30-DEC-09 30-DEC-09  
 NCG REF: ONE (1)  
 SCALE: N.T.S.  
 DWG No. 16960-10  
 SHEET 1 OF 1