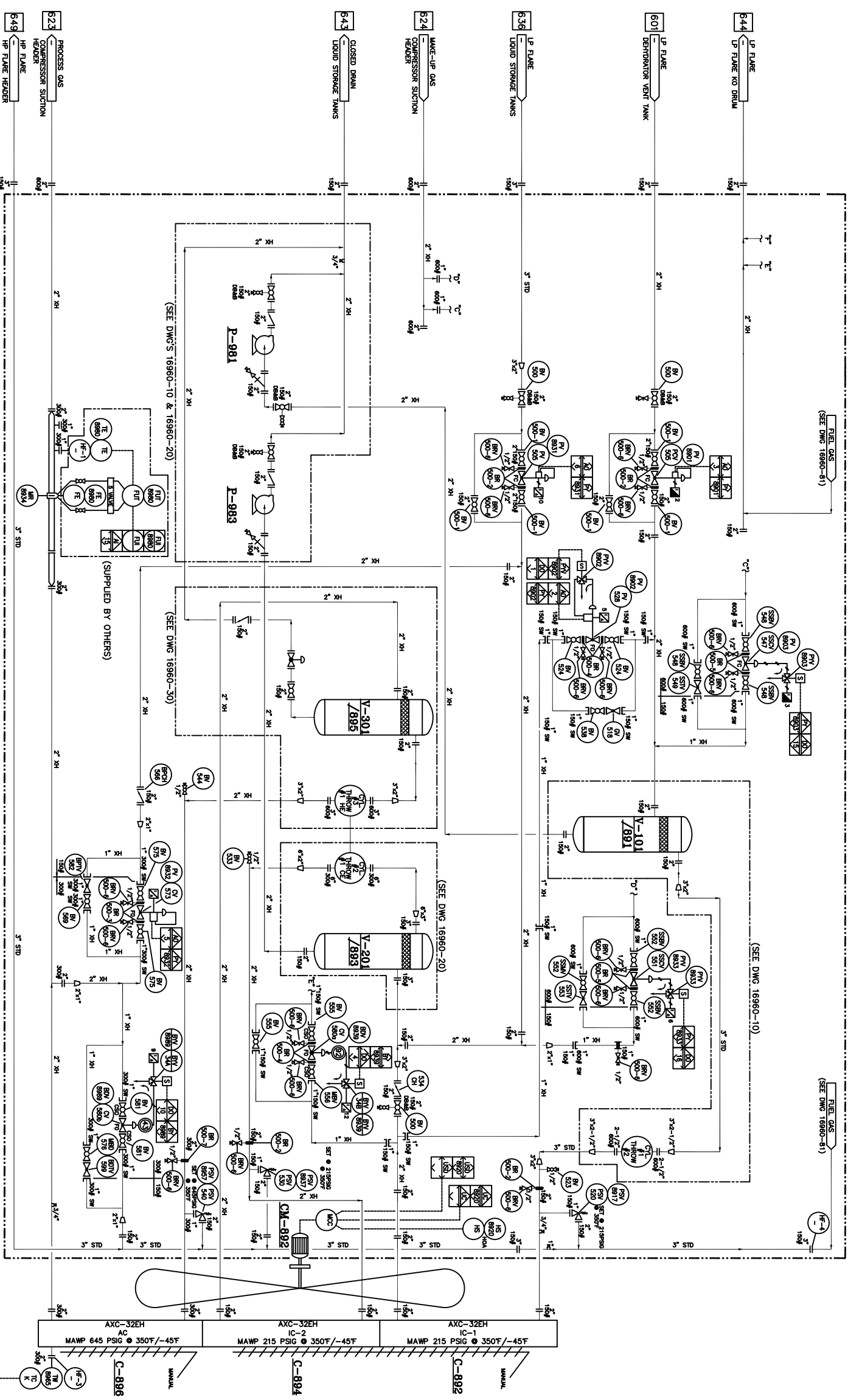


NOTE: ITEM No. = FIRST DIGIT (DWG REF.), LAST TWO DIGITS (ITEM No.)

ITEM	PART NO.	QTY.	DESCRIPTION
500	804350	3	VALVE, BALL, 2" 150# RF, RP, TRINATION, DBB-NACE KF (E3758-8296611)
500-1	803776	6	VALVE, BALL, 2"-150CL, RF, RP, LH, NACE, NUTRON (TKR20R01S)
500-2	804359	6	BLEED RING, 2" 150# SAS16-70N NACE SPEC.
500-3	804338	2	BLEED RING, 1" 300/600# SAS16-70N NACE SPEC.
500-4	804337	5	BLEED RING, 1" 150# SAS16-70N NACE SPEC.
500-5	804338	4	BLEED RING, 1" 300/600# SAS16-70N NACE SPEC.
500-6	803625	17	VALVE, NEEDLE, 1/2" X 1/2" MAXE NPT, 6000 PSIG WP, 316SS.
500-7	804340	1	CENTURY (CMT-1-M44TDN1)
505	803922	1	BLEED RING, 2" 300/600# SAS16-70N NACE SPEC.
8901/8931		1	VALVE, CONTROL, 2"-150CL, LH MOUNT, 0-33 PSI OPERATING RANGE.
8931	804351	1	VALVE, GLOBE, 1"-150CL, RF, RP, LH, NACE, NUTRON (TKR10R01S)
8917	803981	1	VALVE, RELIEF, FARRIS, 1"-150RF X 2" 150RF "D" ORIFICE, 260A10-120
524	803932	1	VALVE, BALL, 1/2"-3000CL, NPT, RP, LH, NACE, NUTRON, 5A-13-ROSS30S2
8917	803774	1	VALVE, BALL, 1/2"-3000CL, NPT, RP, LH, NACE, NUTRON, 5A-13-ROSS30S2
524	803932	1	VALVE, BALL, 1/2"-150CL, RF, RP, LH, NACE, NUTRON, 5A-13-ROSS30S2
8902	804099	1	VALVE, CONTROL, 0.4", 1"-150CL, RF, RP, LH, NACE, NUTRON (TKR10R01S)
530	803981	1	VALVE, RELIEF, FARRIS, 1"-150RF X 2" 150RF "D" ORIFICE, 260A10-120
8937	803774	1	VALVE, BALL, 1/2"-3000CL, NPT, RP, LH, NACE, NUTRON, 5A-13-ROSS30S2
533	803774	1	VALVE, BALL, 1/2"-3000CL, NPT, RP, LH, NACE, NUTRON, 5A-13-ROSS30S2
534	804355	4	VALVE, CHECK, PISTON, 2"-150CL, RF, RP, LH, NACE, NUTRON (TKR10R01S)
538	803932	5	VALVE, BALL, 1"-150CL, RF, RP, LH, NACE, NUTRON (TKR10R01S)
540	804172	1	VALVE, RELIEF, FARRIS, 1"-300RF X 2" 150RF NACE, NEWCO 260A12-120
8957		1	SET @ 645 PSIG / 350F. NACE
544	803774	1	VALVE, BALL, 1/2"-3000CL, NPT, RP, LH, NACE, NUTRON, 5A-13-ROSS30S2
547	804357	1	VALVE, CONTROL, 0.4", 1"-600CL, RF, RP, LH, NACE, NUTRON (TKR10R01S)
8903	804341	3	MAX DIFF 1500PSID 0-33 PSI OPERATING RANGE, FAIL CLOSED, NACE, FIS
548	804355	3	VALVE, BALL, 1"-600CL, RF, RP, LH, NACE, NUTRON (TKR10R01S)
549	803932	1	VALVE, CHECK, PISTON, 2"-150CL, RF, RP, LH, NACE, NUTRON (TKR10R01S)
551	804357	1	VALVE, CONTROL, 0.4", 1"-600CL, RF, RP, LH, NACE, NUTRON (TKR10R01S)
8933	804341	3	MAX DIFF 1500PSID 0-33 PSI OPERATING RANGE, FAIL OPEN, NACE, FIS
552	804353	3	VALVE, GLOBE, 1"-600CL, RF, RP, LH, NACE, NUTRON (TKR10R01S)
555	803932	2	VALVE, BALL, 1"-150CL, RF, RP, LH, NACE, NUTRON (TKR10R01S)
556	804355	1	VALVE, GLOBE, 1"-300CL, RF, RP, LH, NACE, NUTRON (TKR10R01S)
558	803684	4	VALVE, CHECK, PISTON, 2"-150CL, RF, RP, LH, NACE, NUTRON (TKR10R01S)
573	802478	1	VALVE, BALL, 1"-300CL, RF, RP, LH, NACE, NUTRON (TKR10R01S)
8932		1	DNCG610IAC, FAIL OPEN, NACE, D4-X183G/NIT
575	803684	2	VALVE, BALL, 1"-300CL, RF, RP, LH, NACE, NUTRON (TKR10R03S2)
576	803684	1	VALVE, BALL, 1"-300CL, RF, RP, LH, NACE, NUTRON (TKR10R03S2)
580	804368	1	VALVE, CONTROL, FISHER, D4, 1" 150# RF, F.O. 3/4" TRIM, NACE.
8939/8989		1	DA-X142K/NIT
580	804369	1	VALVE, CONTROL, D4, 1"-300CL, RF, 1/4" TRIM, MAX DIFF 750PSID
8938/8989		1	OPERATING RANGE, 0-33 PSI, FAIL OPEN, NACE, D4-X143G/NIT
581	803684	2	VALVE, BALL, 1"-300CL, RF, RP, LH, NACE, NUTRON (TKR10R03S2)
582	804352	1	VALVE, GLOBE, 1"-300CL, RF, RP, LH, NACE, NUTRON (TKR10R03S2)
589	804352	1	VALVE, GLOBE, 1"-300CL, RF, RP, LH, NACE, NUTRON (TKR10R03S2)
8965	804455	1	THERMOCOUPLE, TYPE K, 8" PROBE, 30" SS ARMOUR LEAD.
8965	804454	1	PIC (PN 2008-6-K-360), C/W CONNECTORS M & F (1015-K, 1065-K)
8965	804454	1	THERMOWELL, 3/4" X 1/2" NPT, 8" STEM LENGTH, 6" U, 0.260 BORE.
			316SS PN: PTW-660
			FLANGE, RF, BLIND, 2"-150CL, SA105N
			FLANGE, RF, BLIND, 2"-600CL, SA105N
			FLANGE, RF, BLIND, 1"-600CL, SA105N
			FLANGE, RF, HUBBED BLIND, 2"-600CL, C/W 3/4" NPT TAP, SA105N
			FLANGE, RF, HUBBED BLIND, 1"-150CL, C/W 3/4" NPT TAP, SA105N
			FLANGE, RF, HUBBED BLIND, 2"-300CL, C/W 3/4" NPT TAP, SA105N
			FLANGE, RF, HUBBED BLIND, 3"-150CL, C/W 3/4" NPT TAP, SA105N
			SOLENOID VALVE, 3-WAY, NORMALLY CLOSED, 1/4" NPT, 24VDC.
			SOLENOID VALVE, 3-WAY, NORMALLY CLOSED, 1/4" NPT, 24VDC.
			EXPIRISON PROOF, ASCO (EFR320G202-24)
			SOLENOID VALVE, 3-WAY, NORMALLY CLOSED, 1/4" NPT, 24VDC.
			EXPIRISON PROOF, ASCO (EFR320G202-24)



CUSTOMER CONNECTIONS

TAG	DESCRIPTION	SIZE (VOLUME)	TAG	DESCRIPTION	SIZE (VOLUME)
649	HP FLARE HEADER	3"-150CL, RF			
644	LP FLARE NO DRUM	2"-150CL, RF			
601	DEHTORATOR VENT TANK (SUCTION INLET)	3"-150CL, RF			
636	LIQUID STORAGE TANKS	3"-150CL, RF			
634	MAKE-UP GAS - COMP. SUCTION HEADER	2"-600CL, RF			
643	CLOSED DRAIN - LIQUID STORAGE TANKS	2"-150CL, RF			
633	PROCESS GAS - COMP. FINAL DISCHARGE	2"-600CL, RF			

GENERAL NOTES

- PROCESS INSTRUMENT LINES: 316SS 0.085" WALL TUBING C/W SWAGelok 316SS BACK FERRULE & 316SS FRONT FERRULE UNLESS OTHERWISE NOTED
- UTILITY INSTRUMENT LINES: 316SS 0.085" WALL TUBING C/W SWAGelok 316SS BACK FERRULE & 316SS FRONT FERRULE UNLESS OTHERWISE NOTED
- INSTRUMENT MEDIUM: 4. ALL PROCESS PIPING SPEC. EGA-1-3 FOR SOUP SERVICE. EXTERIOR PIPING / FITTINGS TO BE CLEAN, DRY AIR
- ALL FITTINGS FOR SOUP PIPING LESS THAN OR EQUAL TO 1-1/2" TO BE SW.
- LOW TEMP MATERIALS.
- PIPING OR GREATER TO BE FLANGED.
- CORROSION ALLOWANCE: 1/8" (0.125") (PROCESS ONLY)
- AREA CLASSIFICATION: CLASS 1, ZONE 2 (FE STUDY BY NCC)

AS BUILT

DATE: _____

BY: _____

REV.	BY	CHKD	REVISION DESCRIPTION	DATE
3	MER	SZ	AS-BUILT	25-NOV-10
2	MER	SZ	CHG TO 2" XH; CHG BOM TAGS	17-AUG-10
1	MER	SZ	ADD 8965, HF-3 & HF-4 / UPDATE BOM	04-AUG-10
0	MER	SZ	ISSUED FOR FABRICATION	03-AUG-10
0	MER	AH	ISSUED FOR APPROVAL	07-JUN-10
A	MER	SA	ISSUED FOR APPROVAL	30-DEC-09

THIS DOCUMENT IS SUPPLIED IN CONFIDENCE. REPRODUCTION OR DISTRIBUTION IN WHOLE OR PART WITHOUT THE WRITTEN PERMISSION OF NCC COMPRESSION SOLUTIONS IS STRICTLY PROHIBITED.

END USER/CONSULTANT: ENCANVA CORPORATION

PROJECT: SATURN PHASE II, BC

LOCATION: LSO, 09-27-079-17 WBH

REVISION: _____

DATE: _____

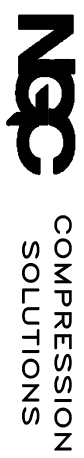
SCALE: _____

NO. REVD: _____

DATE: _____

SCALE: _____

DWG. No. 16960-5 (SHEET 1 OF 1)



PROCESS AND INSTRUMENT DIAGRAM

3 STAGE, C-5% SOUP NATURAL GAS COMPRESSOR PACKAGE