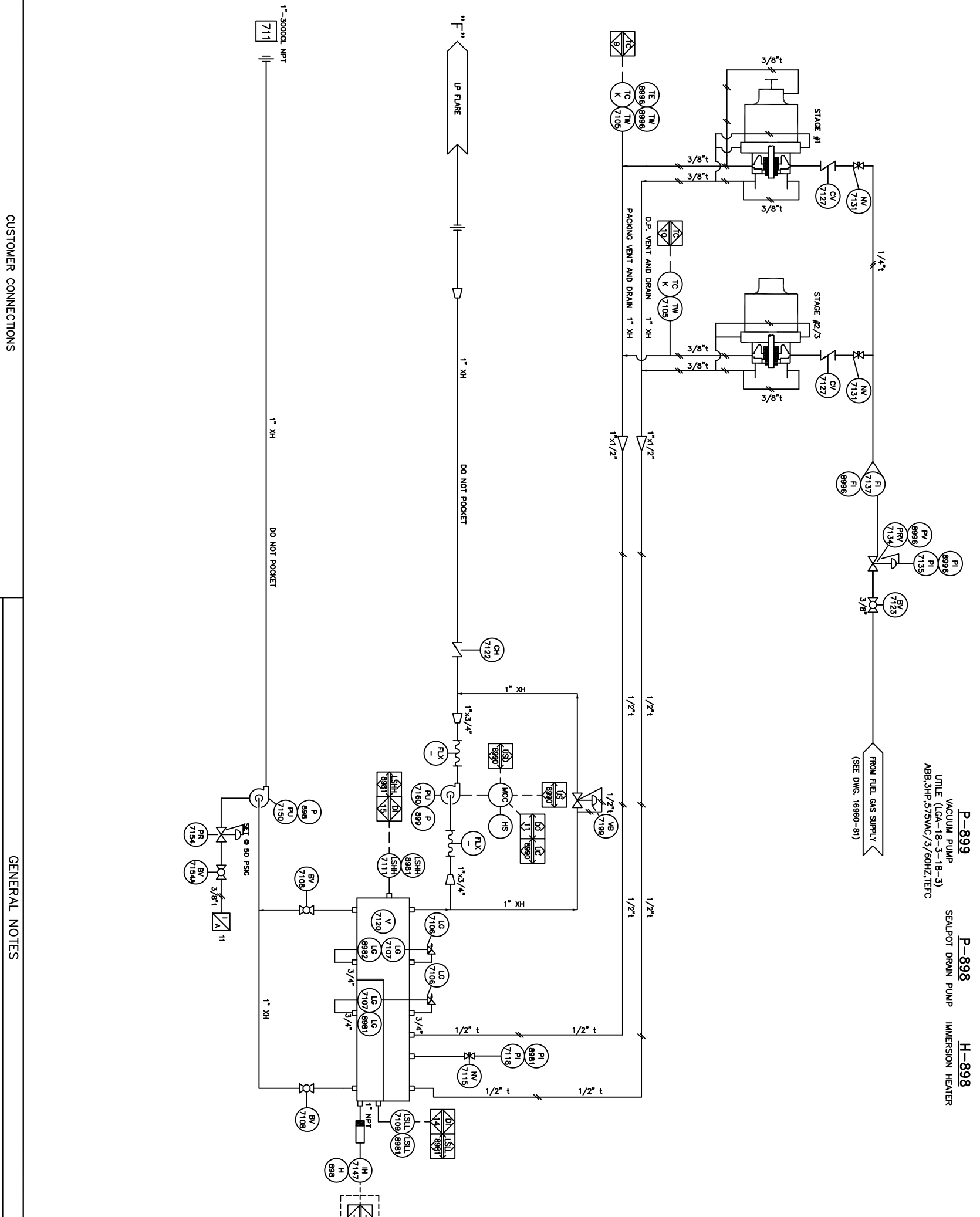


BILL OF MATERIAL

NOTE: ITEM NO. = FIRST DIGIT (DWG REF.), LAST TWO DIGITS (Item No.)

ITEM	PART NO.	QTY.	DESCRIPTION
7105/TW-8996	803139	2	THERMOWELL, 1/2" X 1/2" NPT, 2-1/2" U, 0.260 BORE, 316SS
7106	803005	2	VALVE, GAUGE SET, 3/4" W VESSEL X 1/2" DRAIN X 1/2" GAUGE, NPT NACE QUALITY Q146
7107/LG-8981	801360	2	GAUGE, LEVEL, SINGLE SECTION, REFLEX, 5.75" VISIBLE LENGTH, /LG-8982
7108	803775	2	VALVE, BALL, 1"-3000CL NPT, RP, LH, NACE, NUTRON
7109/LSLL-8981	804930	1	LEVEL SWITCH, LINC, MODEL # L471-01 1-1/2" XP
7111/LSHH-8981	804930	1	LEVEL SWITCH, LINC, MODEL # L471-01 1-1/2" XP
7115	803625	1	VALVE, NEEDLE, 1/2" X 1/2" MKF NPT, 6000 PSIG WP, 316SS, CENTURY (CM2-1-M44T0N1)
7118/P1-8981	803623	1	GAUGE, PRESSURE, -30-30 PSIG, 4" DIAL, 1/2" NPT, BTM MOUNT, SS CASE / INTERNALS, LF, WIKKA MODEL 233.54 (7297444)
7122	803624	1	VALVE, CHECK, SWING, 1"-800CL NPT, NACE TRIM, NEWCO 38T-SF4-3
7123	-	2	VALVE, BALL, 3/8"-3000CL NPT, RP, LH, NACE, NUTRON, 5A-13-R10530SZ
7127	803294	2	CHECK VALVE, 0.25t x 0.25t, 1PSIG CRACKING PRESSURE, SS, SWAGelok, SS-CHS4-1
7131	803295	2	NEEDLE VALVE, 1/4" T X 1/4" T, SS, SWAGelok, SS-1V54
7134/PV-8996	801886	1	REGULATOR, INST SUPPLY, 0-35PSI RANGE, VENTED BONNET, FISHER 67CR-382-SC
7135/P1-8996	803292	1	GAUGE, PRESSURE, 0-30PSIG, 2-1/2" DIAL, 1/4" NPT BACK MOUNT, SS CASE / INTERNALS, LF, WIKKA MODEL 233.53 (9206464)
7137P1-8996	803700	1	FLOW INDICATOR, 1/4" NPT, 2.5 SCFM, BROOKS (35DEP2DCMGI4)
7147	804309	1	IMMERSION HEATER, 1" NPT SS PLUG, SS ELEMENT, 7.5" IMMERSIED LENGTH, XP, CXST102P17X-001, 120V, 1PHASE, 200W
7150/P-898	803095	1	PUMP, PNEUMATIC, DIAPHRAGM, 1" X 1" FNPT, VERSAMATIC (E1AA2R229A)
7154/P1-8998	803008	1	REGULATOR, INST SUPPLY, 0-60PSI RANGE, VENTED BONNET, FISHER 67CR-600SC
7154A	700193	1	VALVE, BALL, NAVCO, C1, RP, 3/8" NPT
7160/P-899	803897	1	PUMP, RSV, DP VACUUM, 3/4" NPT, UTILITY (LGA-18-3-18-3)/C/W 3HP, 1725 RPM, 230-460VAC/3PH/60HZ XP MOTOR, BASE, COUPLING & GUARD
7199	802444	1	VACUUM BREAKER, 1" NPT, 1/2" ORIFICE, SS TRIM, SET @ 2" W.C., FISHER (Y690VBM-12/P1/SPEC (PNI-K48G-006-00-18-F38360-2))
TE-8996	804227	2	THERMOCOUPLE, 6" PROBE, "K" TYPE, 30' LEAD



P-899 VACUUM PUMP
 UTIL (LGA-18-3-18-3)
 ABB, 3HP, 575VAC/3/60HZ, TEFC

P-898 SEALPOT DRAIN PUMP

H-898 IMMERSION HEATER

CUSTOMER CONNECTIONS

TAG	DESCRIPTION	SIZE/(VOLTAGE)	TAG	DESCRIPTION	SIZE/(VOLTAGE)
711	SEALPOT DRAIN	1" NPT			

GENERAL NOTES

- PROCESS INSTRUMENT LINES: 316SS 0.085" WALL TUBING C/W SWAGelok 316SS FERRULE & 316SS FRONT FERRULE UNLESS OTHERWISE NOTED
- UTILITY INSTRUMENT LINES: 316SS 0.085" WALL TUBING C/W SWAGelok 316SS BACK FERRULE & 316SS FRONT FERRULE UNLESS OTHERWISE NOTED
- INSTRUMENT MEDIUM: SOUR SERVICE, EXTERIOR PIPING / FITTINGS TO BE FABRICATED USING CLEAN, DRY AIR
- ALL PROCESS PIPING TO BE PER ENCAP, PIPING SPEC. ECA-1-3 FOR LOW TEMP MATERIALS.
- ALL FITTINGS FOR SOUR PIPING LESS THAN OR EQUAL TO 1-1/2" TO BE SW.
- CORROSION ALLOWANCE: 1/8" (0.125") (PROCESS ONLY)
- AREA CLASSIFICATION: CLASS 1, ZONE 2 (FE STUDY BY NCG)
- VENT TO SAFE AREA. "SAFE AREA" SHALL BE AS DEFINED IN THE APPLICABLE REGULATIONS AND DIRECTED TO SAFE AREA THROUGH THE BUILDING VIA VENTS, INGESTION INTO THE ENGINE AIR INTAKE OR IMPINGEMENT ON ANY HOT SURFACES (IE, SILENCERS, CATALYTIC CONVERTERS, EXHAUST PIPING, ETC.)
- SURFACE PREP, SSPC-SP2
- PRIMER: CLOVERPALE F34 INDUSTRIAL ENAMEL (WARM GREY) FINISH: CLOVERPALE F34 INDUSTRIAL ENAMEL (WARM GREY)
- PROCESS HARDWARE: NUTS: 316SS WASHERS: 316SS GASKETS: FLEXITALLIC FLEXIGARB (GREY STRIPS)

AS BUILT

DATE: _____

BY: _____

THIS DOCUMENT IS SUPPLIED IN CONFIDENCE. REPRODUCTION OR DISTRIBUTION IN WHOLE OR PART WITHOUT THE WRITTEN PERMISSION OF NCG COMPRESSION SOLUTIONS IS STRICTLY PROHIBITED.

NCG COMPRESSION SOLUTIONS

COMPRESSOR PACKING VENT & DRAIN SCHEMATIC
 3 STAGE, 0-5% SOUR NATURAL GAS COMPRESSOR PACKAGE

ENCAVANA CORPORATION
 LOCATION: SATURN PHASE II, BC
 L.S.D. 09-27-079-17 WBM
 MER SZ ADD CUSTOMER CONN. CNG DESC. 31-JUL-10
 MER SZ UPDATE DRAWING 16960-5 07-JUN-10
 MER SZ ISSUED FOR FABRICATION 30-DEC-09
 MER AH ISSUED FOR APPROVAL 30-DEC-09

REV. BY CHKD. REVISION DESCRIPTION DATE

DWG. No. 16960-71
 (SHEET 1 OF 1)