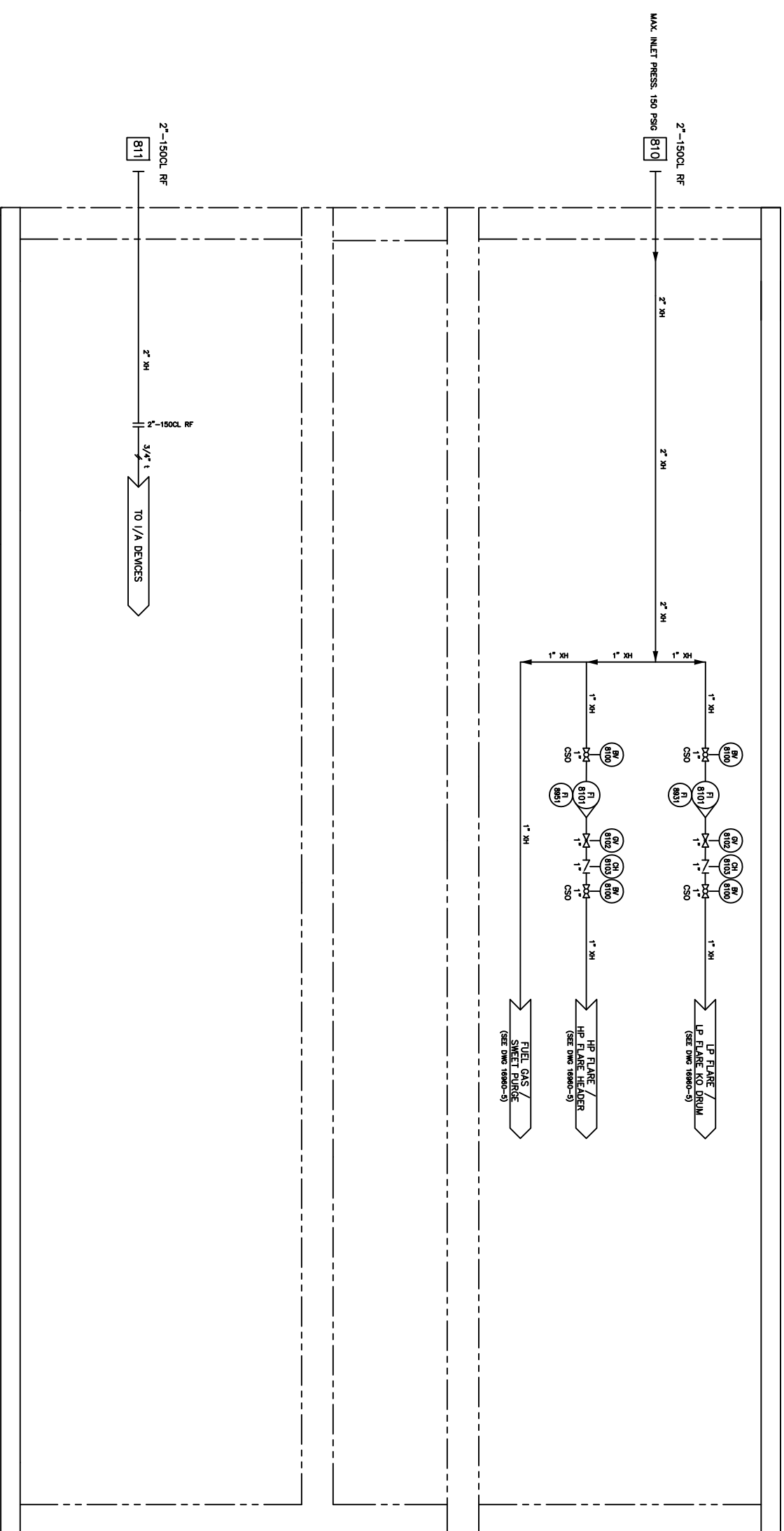


# BILL OF MATERIAL

NOTE: ITEM NO. = FIRST TWO DIGITS (DWG. REF.), LAST TWO DIGITS (Item No.)

ITEM	PART NO.	QTY.	
8100	803775	4	VALVE, BALL, 1"-3000CL NPT, RP, LH, NACE, NUTRON, 5A-T3-R10S30SZ
8101	803700	2	FLOW INDICATOR, 1/4"NPT, C/W BROOKS-LINE IV NEEDLE VALVE,
8931	8951		0.37-3.7 SCFM FLOW RATE, BROOKS (1350EP2DDONG1A)
8102	803624	2	VALVE, CHECK, SWING, 1"-800CL NPT, NACE TRIM, NEWCO 38T-SF4-3
8103	803624	2	VALVE, CHECK, SWING, 1"-800CL NPT, NACE TRIM, NEWCO 38T-SF4-3



## CUSTOMER CONNECTIONS

TAG	DESCRIPTION	SIZE/(VOLTAGE)
810	SHEET GAS PURGE	2'-1500CL RF
811	INSTRUMENT AIR INLET	2'-1500CL RF

## GENERAL NOTES

- PROCESS INSTRUMENT LINES:
  - 316SS 0.085" WALL TUBING c/w SWAGelok
  - 316SS INSTRUMENT FERRULE & 316SS FRONT FERRULE
  - 316SS BACK FERRULE & 316SS FRONT FERRULE
  - UNLESS OTHERWISE NOTED
- UTILITY INSTRUMENT LINES:
  - 316SS 0.085" WALL TUBING c/w SWAGelok
  - 316SS FITTINGS w/
  - 316SS BACK FERRULE & 316SS FRONT FERRULE
  - UNLESS OTHERWISE NOTED
- INSTRUMENT MEDIUM:
  - ALL PROCESS PIPING TO BE PER ENCAPA, PIPING SPEC. EGA-1-3 FOR SOUR SERVICE, EXTERIOR PIPING / FITTINGS TO BE FABRICATED USING LOW TEMP MATERIALS.
  - ALL FITTINGS FOR SOUR PIPING LESS THAN OR EQUAL TO 1-1/2" TO BE SW.
  - CORROSION ALLOWANCE: 1/8" (0.125") (PROCESS ONLY)
  - AREA CLASSIFICATION: CLASS 1, ZONE 2 (FE STUDY BY NCG)
- VENT TO SAFE AREA, "SAFE AREA" SHALL BE DIRECTED TO AVOID RECIRCULATION INTO THE BUILDING VIA VENTS, INGESTION INTO THE ENGINE AIR INTAKE OR IMPINGEMENT ON ANY HOT SURFACES (IE, SILENCERS, CATALYTIC CONVERTERS, SILENCE EXHAUST PIPING, ETC.)
- SURFACE PREP - SSPC-SP2
- PRIMER: CLOVERPALE T-1010
- FINISH: CLOVERPALE F34 INDUSTRIAL ENAMEL (WARM GREY)
- PROCESS HARDWARE:
  - NUTS: 316
  - WASHERS: 316
  - GASKETS: FLEXITALLIC FLEXIGARB (GREY STRIPE)

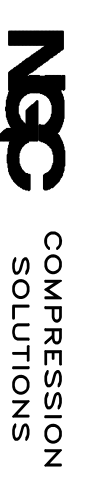
## AS BUILT

BY: \_\_\_\_\_

DATE: \_\_\_\_\_

THIS DOCUMENT IS SUPPLIED IN CONFIDENCE. REPRODUCTION OR DISTRIBUTION IN WHOLE OR PART WITHOUT THE WRITTEN PERMISSION OF NCG COMPRESSION SOLUTIONS IS STRICTLY PROHIBITED.

REV.	BY	CHKD	REVISION DESCRIPTION	DATE
3	MER	SZ	AS-BUILT	25-NOV-10
2	MER	SZ	ADD CUSTOMER CONNECTIONS	07-JUN-10
1	MER	SZ	UPDATE DRAWING 16960-5	31-JUL-10
0	MER	SZ	ISSUED FOR FABRICATION	07-JUN-10
A	MER	AH	ISSUED FOR APPROVAL	30-DEC-09



TITLE: INST. AIR/FUEL GAS UTILITIES SCHEMATIC  
 ANEL 09A/2, BALOR SGP, MAG. 22H  
 3 STAGE, 0-5% SOUR NATURAL GAS COMPRESSOR PACKAGE  
 END USER/CONSULTANT: ENCAPA CORPORATION  
 LOCATION: SATURN PHASE II, BC  
 LSD: 09-27-079-17 WBM  
 MER  
 30-DEC-09  
 WGT No. 16960-NC  
 WGT No. ONE (1)  
 No. RECD: ONE (1)  
 SCALE: N.T.S.  
 REVISION: 3  
 DWG. REFERENCE: -  
 DWG. No. 16960-81  
 (SHEET 1 OF 1)