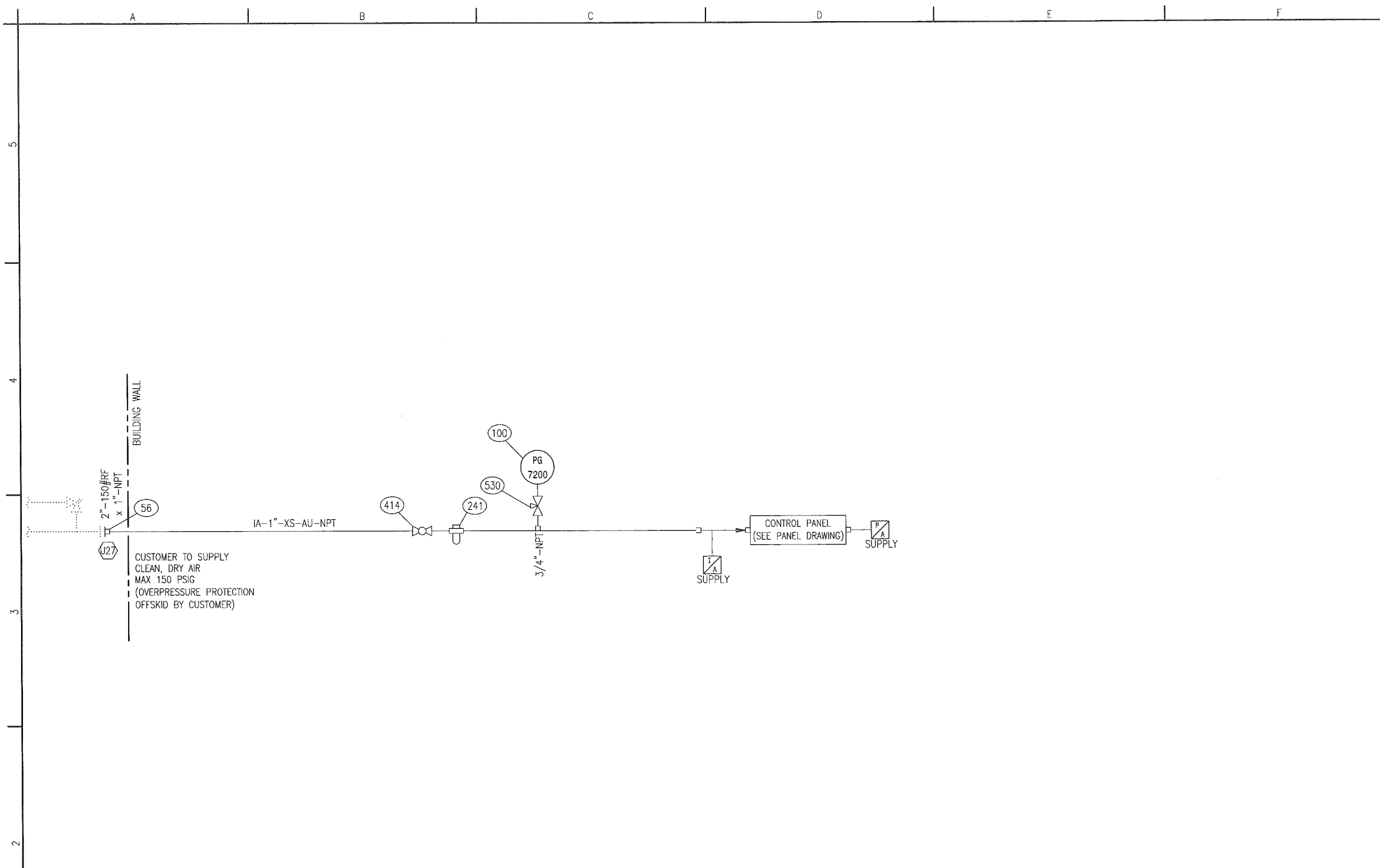


BILL OF MATERIALS			
MK	QTY	PART NUMBER	DESCRIPTION
56	1	BWF-HOHL	FLANGE, HUB, 2"-150# x 1"-NPT, SA350LF2
100	1	PI-1002	IND. PRESS, 0-300PSI, 4-1/2"DIAL, 1/2"NPT, BTM, SS MFG: WIKA MODEL: 233.34
241	1	FLT-704	FILTER, COALESCING, 1" NPT, AL BODY, 70C ELEMENT MODEL: BEP-38-152-70C
414	1	BVS-0025	VALVE, BALL, 1"-NPT, CL1500, FP, 3PCS, FL, NACE MFG: JAG MODEL: T3-F10T15N
530	1	NVS-1004	VALVE, NEEDLE, 3/4"M X 1/2"F, NPT, 6000#, SWT MFG: CENTURY MODEL: CM23M64TBV



STANDARD TUBING SIZES	LINETYPE LEGEND	PNEUMATIC TERMINATIONS	INSTRUMENTATION TAGGING LEGEND
*1/4" - 0.049"	PROCESS PIPING —————	INSTRUMENT AIR	LOCAL MOUNTED DEVICE
*3/8" - 0.049"	UTILITY PIPING —————	PANEL AIR	PANEL MOUNTED DEVICE
1/2" - 0.049"	SEAMLESS TUBING - - - - -		OFF-SKID MOUNTED DEVICE
3/4" - 0.065"	ELECTRICAL WIRING - - - - -		SIGNAL TO PANEL
1" - 0.083"	INTERNAL LOGIC - - - - -		SIGNAL TO OFF-SKID
*PER CLIENT SPEC	OEM SUPPLIED - - - - -		PANEL LOGIC
	ASSEMBLY BOUNDARY - - - - -		
	BUILDING WALL - - - - -		
	DRIVETRAIN - - - - -		
	CUSTOMER SUPPLIED - - - - -		
ALL TUBING TO BE 316SS			

THIS DRAWING IS SOLE PROPERTY OF BIDELL EQUIPMENT AND SHALL NOT BE REPRODUCED, COPIED, LENT, ALTERED NOR USED FOR ANY PURPOSE OTHER THAN WHICH IT IS FURNISHED EXCEPT WITH THE WRITTEN PERMISSION OF BIDELL EQUIPMENT

AS BUILT
AS BUILT
BUILT
2015/10/08

REV	DATE	CREATED	REVIEWED	APPROVED	DESCRIPTION
0	15-10-07	CW	TT	GM	AS BUILT
REVISIONS					
MAIN SHOP / OFFICE 6900 - 112th AVENUE S.E. CALGARY, AB T2C 4Z1 PHONE: (403) 235-5877 FAX: (403) 272-7749		BIDELL™ GAS COMPRESSION		APEGA PERMIT NUMBER P08318	
INSTRUMENT SUPPLY FLOWSHEET					
WEG 350HP ELECTRIC/ARIEL JGR/2/AIR-X-LIMITED 96AEF					
CUSTOMER: ENCANA c/o EQUINOX ENGINEERING					
LOCATION: KAYBOB GAS PLANT PHASE 3 (DE-ETHANIZER)				SHEET#:	1 OF 1
LSD: 15-31-062-21 W5M				JOB#:	14-925
PAPER SIZE 11"x17"	SCALE NTS	DWG#	14-925-720		REV 0