

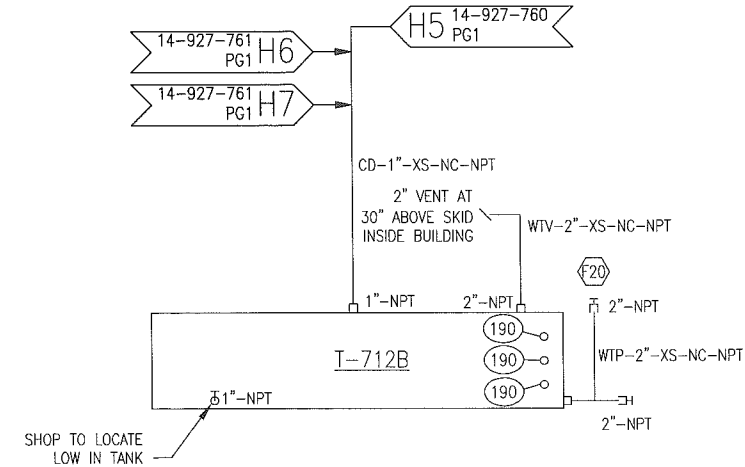
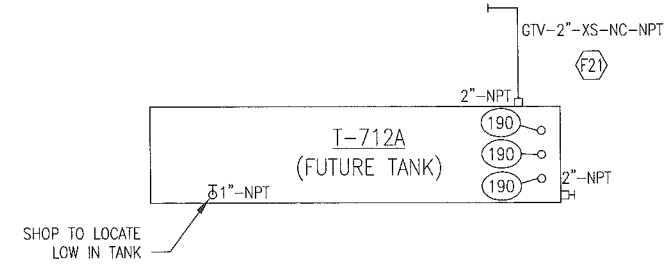
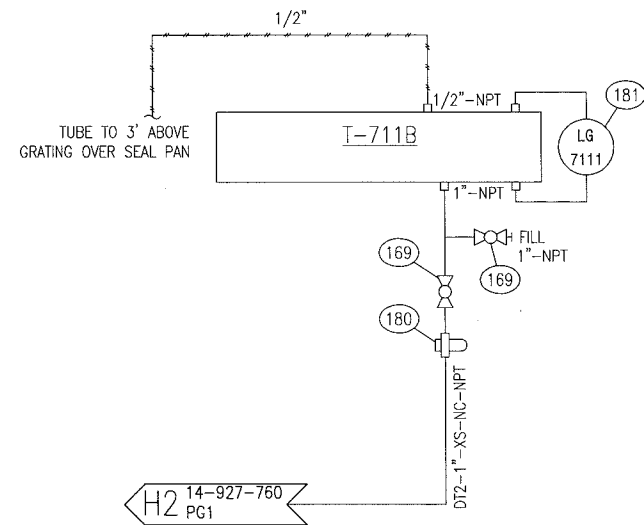
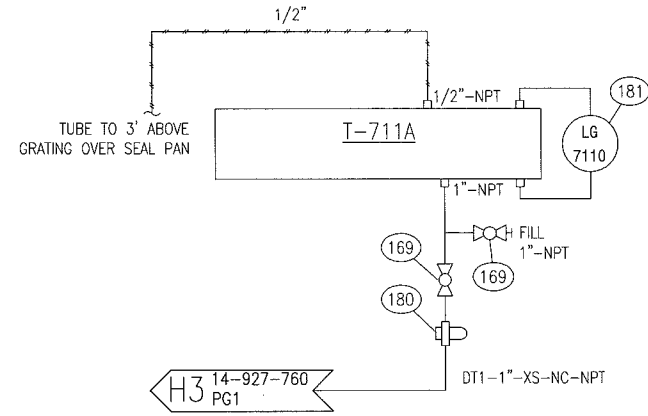
T-711A
 INTEGRAL CRANE DAY
 VOLUME: 93 GALLONS
 SERVICE: COMPRESSOR CRANKCASE OIL
 FILL: SAE 40WT LUBE OIL

T-711B
 INTEGRAL CRANE DAY
 VOLUME: 93 GALLONS
 SERVICE: COMPRESSOR CYLINDER OIL
 FILL: SAE 40WT LUBE OIL

T-712A
 INTEGRAL SKID TANK
 VOLUME: 149 GALLONS
 SERVICE: SPARE
 FILL: N/A

T-712B
 INTEGRAL SKID TANK
 VOLUME: 149 GALLONS
 SERVICE: WASTE OIL
 FILL: N/A

BILL OF MATERIALS			
MK	QTY	PART NUMBER	DESCRIPTION
169	4	BVSF-102CS	VALVE, BALL, 1"-FNPT, 2000#, FP, 2PC, SWT MFG: FUSION MODEL: 428TF010F20N1AN
180	2	TNK-310	FILTER, 1"-NPT, 9 MICRON MFG: BALDWIN MODEL: BF914
181	2	TNK-217	GAUGE, LEVEL, TANK, ALUMIMUM MFG: NORCAN FLUID POWER MODEL: YB4353-0900
190	6	LLG-1032	SIGHT PLUG (BULLSEYE), 1"-NPT, CS, NON-CODE USE ONLY MFG: LDI INDUSTRIES MODEL: LSP51-06



STANDARD TUBING SIZES	LINETYPE LEGEND	INSTRUMENTATION TAGGING LEGEND	THIS DRAWING IS SOLE PROPERTY OF BIDELL EQUIPMENT AND SHALL NOT BE REPRODUCED, COPIED, LENT, ALTERED NOR USED FOR ANY PURPOSE OTHER THAN WHICH IT IS FURNISHED EXCEPT WITH THE WRITTEN PERMISSION OF BIDELL EQUIPMENT
*1/4" - 0.049"	PROCESS PIPING	○ LOCAL MOUNTED DEVICE	AS BUILT AS BUILT BUILT 2015/10/14
*3/8" - 0.049"	UTILITY PIPING	○ PANEL MOUNTED DEVICE	
1/2" - 0.049"	SEAMLESS TUBING	○ OFF-SKID MOUNTED DEVICE	
3/4" - 0.065"	ELECTRICAL WIRING	◇ SIGNAL TO PANEL	
1" - 0.083"	INTERNAL LOGIC	◇ SIGNAL TO OFF-SKID	
*PER CLIENT SPEC	OEM SUPPLIED	◇ PANEL LOGIC	
	ASSEMBLY BOUNDARY		
	BUILDING WALL		
	DRIVETRAIN		
	CUSTOMER SUPPLIED		
ALL TUBING TO BE 316SS			

REV	DATE	DRAWN	REVIEWED	APPROVED	DESCRIPTION
0	15-10-14	GW	TT	GM	AS BUILT
REVISIONS					
MAIN SHOP / OFFICE 6900 - 112th AVENUE S.E. CALGARY, AB T2C 4Z1 PHONE: (403) 235-5877 FAX: (403) 272-7749					
BIDELL™ GAS COMPRESSION					
HOLDING TANK UTILITY DIAGRAM WEG 350HP ELECTRIC/ARIEL JGR/2/AIR-X-LIMITED 96AEF					
CUSTOMER: ENCAN c/o EQUINOX ENGINEERING LOCATION: KAYBOB GAS PLANT PHASE 3 (DE-ETHANIZER) SHEET#: 1 OF 1 LSD: 15-31-062-21 W5M JOB#: 14-927					
PAPER SIZE 11"x17"		SCALE NTS		DWG# 14-927-711 REV 0	