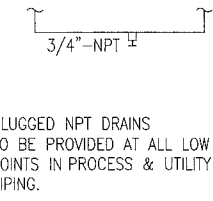


STANDARD TUBING SIZES

- *1/4" - 0.049"
- *3/8" - 0.049"
- 1/2" - 0.049"
- 3/4" - 0.065"
- 1" - 0.083"
- *PER CLIENT SPEC

ALL TUBING TO BE 316SS

LOW POINT DRAIN DETAIL



LINETYPE LEGEND

- PROCESS PIPING
- UTILITY PIPING
- SEAMLESS TUBING
- ELECTRICAL WIRING
- INTERNAL LOGIC
- OEM SUPPLIED
- ASSEMBLY BOUNDARY
- BUILDING WALL
- DRIVETRAIN
- CUSTOMER SUPPLIED
- EXISTING EQUIPMENT

PNEUMATIC TERMINATIONS

- I/A INSTRUMENT AIR
- P/A PANEL AIR
- V/L VENT LOCALLY
- V/PG VENT TO PROCESS GAS HEADER

INSTRUMENTATION TAGGING LEGEND

- LOCAL MOUNTED DEVICE
- PANEL MOUNTED DEVICE
- SIGNAL TO PANEL
- SIGNAL TO OFF-SKID
- PANEL LOGIC

THIS DRAWING IS SOLE PROPERTY OF BIDELL EQUIPMENT AND SHALL NOT BE REPRODUCED, COPIED, LENT, ALTERED NOR USED FOR ANY PURPOSE OTHER THAN WHICH IT IS FURNISHED EXCEPT WITH THE WRITTEN PERMISSION OF BIDELL EQUIPMENT

ISSUED FOR CONSTRUCTION

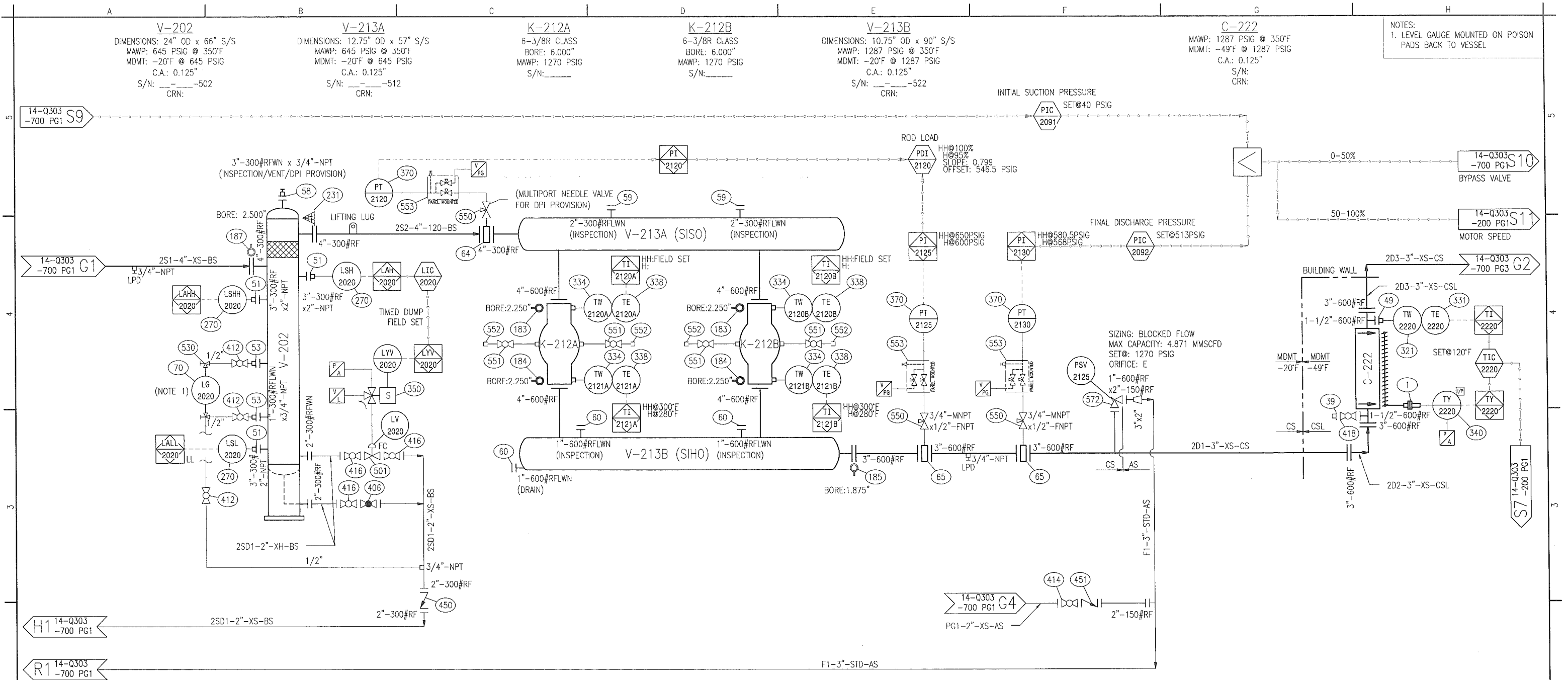
IFC

2015/11/17

UNIT NUMBER

- 14-928
- 14-929
- 14-930

REV	DATE	CREATED	REVIEWED	APPROVED	DESCRIPTION
D	15-11-17	GW	GT	AH	REVISED VALVE TO LOW TEMP.
C	15-10-13	GW	TT	GM	REVISED DUMP VALVE PART NUMBERS
B	15-08-28	GW	TT	GM	REVISED AS NOTED
A	15-07-21	GW	TT	GM	ISSUED FOR CONSTRUCTION
O	15-04-13	DM	GW	GM	ISSUED FOR APPROVAL
REVISIONS					
MAIN SHOP / OFFICE 6900 - 112th AVENUE S.E. CALGARY, AB T2C 4Z1 PHONE: (403) 235-5877 FAX: (403) 272-7749					
BIDELL ™ GAS COMPRESSION					
SOUR PROCESS FLOW WEG 600HP ELECTRIC/AIRTEL JGR/4/AIR-X-LIMITED 108EF					
CUSTOMER: ENCANNA c/o EQUINOX ENGINEERING LOCATION: KAYBOB GAS PLANT LSD: 15-31-062-21 W5M					
				SHEET#:	1 OF 4
				JOB#:	14-Q303
PAPER SIZE	SCALE	DWG#	REV D		
11"x17"	NTS	14-Q303-700			



NOTES:
1. LEVEL GAUGE MOUNTED ON POISON PADS BACK TO VESSEL

STANDARD TUBING SIZES	LOW POINT DRAIN DETAIL	LINETYPE LEGEND
*1/4" - 0.049" *3/8" - 0.049" 1/2" - 0.049" 3/4" - 0.065" 1" - 0.083" *PER CLIENT SPEC	<p>PLUGGED NPT DRAINS TO BE PROVIDED AT ALL LOW POINTS IN PROCESS & UTILITY PIPING.</p>	PROCESS PIPING ————— UTILITY PIPING ————— SEAMLESS TUBING ————— ELECTRICAL WIRING - - - - - INTERNAL LOGIC - - - - - OEM SUPPLIED - - - - - ASSEMBLY BOUNDARY ———— BUILDING WALL ———— DRIVETRAIN ———— CUSTOMER SUPPLIED EXISTING EQUIPMENT

PNEUMATIC TERMINATIONS
VENT TO PROCESS GAS HEADER PANEL AIR VENT LOCALLY

INSTRUMENTATION TAGGING LEGEND
LOCAL MOUNTED DEVICE PANEL MOUNTED DEVICE SIGNAL TO PANEL SIGNAL TO OFF-SKID PANEL LOGIC

THIS DRAWING IS SOLE PROPERTY OF BIDEILL EQUIPMENT AND SHALL NOT BE REPRODUCED, COPIED, LENT, ALTERED NOR USED FOR ANY PURPOSE OTHER THAN WHICH IT IS FURNISHED EXCEPT WITH THE WRITTEN PERMISSION OF BIDEILL EQUIPMENT

ISSUED FOR CONSTRUCTION

IFC

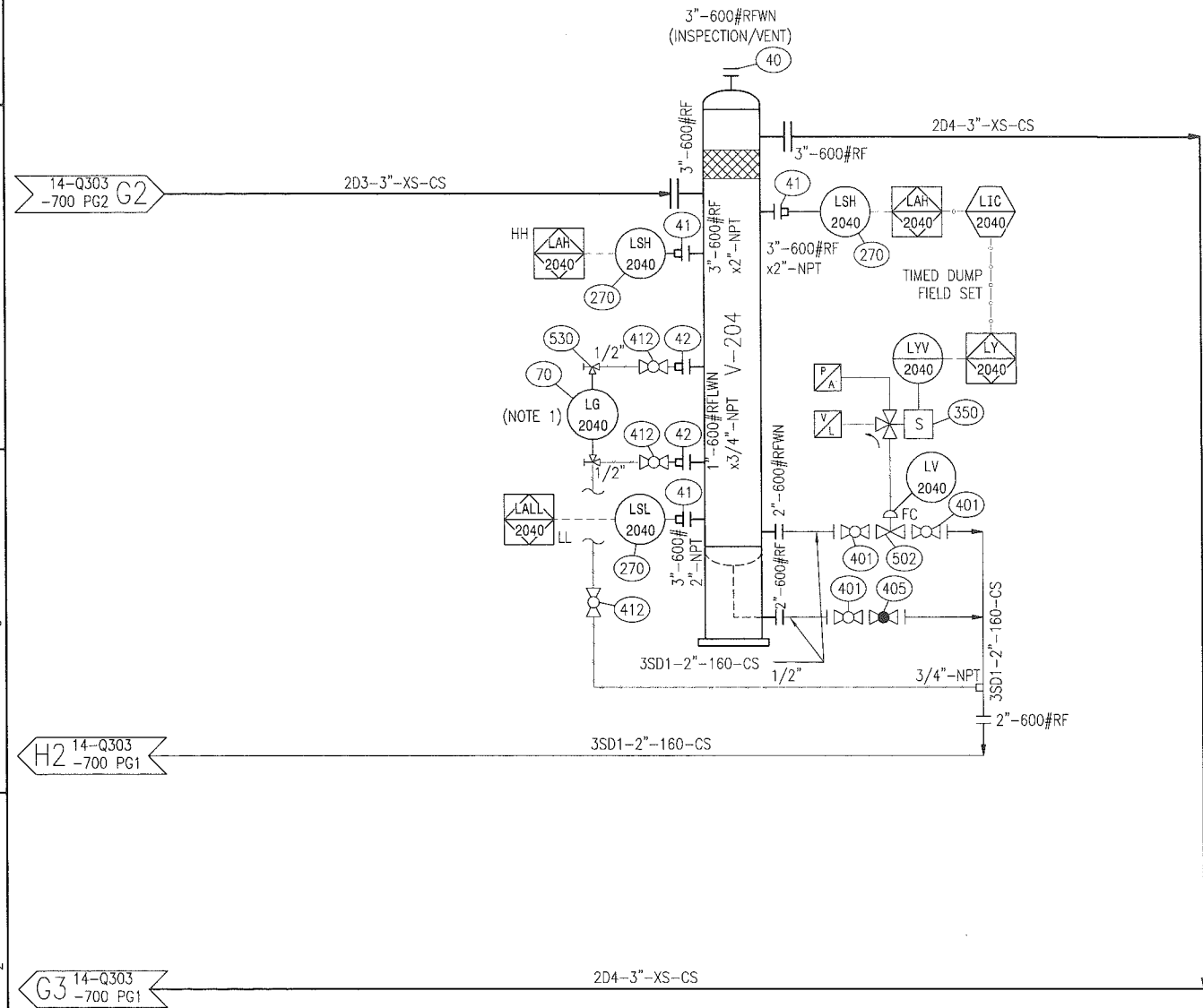
2015/11/17

UNIT NUMBER
14-928 <input type="checkbox"/>
14-929 <input type="checkbox"/>
14-930 <input type="checkbox"/>

D	15-11-17	GW	GT	AH	REVISED VALVE TO LOW TEMP.
REV	DATE	CREATED	REVIEWED	APPROVED	DESCRIPTION
REVISIONS					
MAIN SHOP / OFFICE 6900 - 112th AVENUE S.E. CALGARY, AB T2C 4Z1 PHONE: (403) 235-5877 FAX: (403) 272-7749		BIDELL GAS COMPRESSION APEGA PERMIT NUMBER P08318			
SOUR PROCESS FLOW					
WEG 600HP ELECTRIC/AIRTEL JGR/4/AIR-X-LIMITED 10BEF					
CUSTOMER: ENCANIA c/o EQUINOX ENGINEERING			SHEET#: 2 OF 4		
LOCATION: KAYBOB GAS PLANT			JOB#: 14-Q303		
LSD: 15-31-062-21 WSM					
PAPER SIZE 11"x17"	SCALE NTS	DWG#	14-Q303-700		REV D

V-204
 DIMENSIONS: 24" OD x 66" S/S
 MAWP: 1287 PSIG @ 350°F
 MDMT: -20°F @ 1287 PSIG
 C.A.: 0.125"
 S/N: _____-503
 CRN:

NOTES:
 1. LEVEL GAUGE MOUNTED ON POISON
 PADS BACK TO VESSEL



THIS DRAWING IS SOLE PROPERTY OF BIDELL EQUIPMENT AND SHALL NOT BE REPRODUCED, COPIED, LENT, ALTERED NOR USED FOR ANY PURPOSE OTHER THAN WHICH IT IS FURNISHED EXCEPT WITH THE WRITTEN PERMISSION OF BIDELL EQUIPMENT

ISSUED FOR CONSTRUCTION

IFC

2015/11/17

UNIT NUMBER

- 14-928
- 14-929
- 14-930

STANDARD TUBING SIZES	LOW POINT DRAIN DETAIL	LINETYPE LEGEND	PNEUMATIC TERMINATIONS	INSTRUMENTATION TAGGING LEGEND
*1/4" - 0.049" *3/8" - 0.049" 1/2" - 0.049" 3/4" - 0.065" 1" - 0.083" *PER CLIENT SPEC	<p>PLUGGED NPT DRAINS TO BE PROVIDED AT ALL LOW POINTS IN PROCESS & UTILITY PIPING.</p>	PROCESS PIPING ——— UTILITY PIPING ——— SEAMLESS TUBING ——— ELECTRICAL WIRING - - - INTERNAL LOGIC - - - OEM SUPPLIED - - - ASSEMBLY BOUNDARY - - - BUILDING WALL ——— DRIVETRAIN ——— CUSTOMER SUPPLIED EXISTING EQUIPMENT	INSTRUMENT AIR PANEL AIR VENT LOCALLY VENT TO PROCESS GAS HEADER	LOCAL MOUNTED DEVICE PANEL MOUNTED DEVICE SIGNAL TO PANEL SIGNAL TO OFF-SKID PANEL LOGIC

ALL TUBING TO BE 316SS

D	15-11-17	GW	GT	AH	REVISED VALVE TO LOW TEMP.
REV	DATE	CREATED	REVIEWED	APPROVED	DESCRIPTION
REVISIONS					
MAIN SHOP / OFFICE 6800 - 112th AVENUE S.E. CALGARY, AB T2C 4Z1 PHONE: (403) 235-9877 FAX: (403) 272-7749				APEGA PERMIT NUMBER P08318	
SOUR PROCESS FLOW					
WEG 600HP ELECTRIC/ARIEL JGR/4/AIR-X-LIMITED 108EF					
CUSTOMER: ENCAN c/o EQUINOX ENGINEERING					
LOCATION: KAYBOB GAS PLANT				SHEET#: 3 OF 4	
LSD: 15-31-062-21 WSM				JOB#: 14-Q303	
PAPER SIZE 11"x17"	SCALE NTS	DWG#	14-Q303-700		REV D

BILL OF MATERIALS				
MK	QTY	PART NUMBER	DESCRIPTION	
416	3	BV-1050	VALVE, BALL, 2"-300#RF, FP, NACE MFG: JAG MODEL: FB2-F20R03N	
417	1	BV-1204	VALVE, BALL, 1-1/2"-300#RF, BODY:A350-LF2, SEAT:TEFLON, TRIM:316 SS, FP, FLOATING, 3 PIECE THREADED, LOCKABLE LEVER, NACE0175 MFG: JAG MODEL: T3-F15F03L	
418	1	BV-1261	VALVE, BALL, 1-1/2"-600#RF, BODY:A350-LF2, SEAT:PTFE, TRIM:A351-CF8M, FP, FLOATING, 3 PIECE THREADED, LOCKABLE LEVER, LT, NACE0175 MFG: NUTRON MODEL: 5A-T3F15R06LZ	
420	2	GBF-1007	VALVE, GLOBE, 2"-150#RF, A216 WCB, TRIM 12, NACE MFG: NEWCO MODEL: 21F-CB4/2-NC	
450	2	PCN-1025	VALVE, CHECK, SWING, 2"-300#RF, BODY:A216-WCB, TRIM:STELLITE, NACE0175, 10.5"/F MFG: NEWCO MODEL: 33F-CB4/2-NC	
451	3	SCF-201N	VALVE, CHK, SWING, 2", RF, CL150, NACE MFG: WHEATLEY MODEL: 9D-510-025027-166	
452	1	SCF-1026	VALVE, CHECK, PISTON, 3"-600#RF, BODY:A352-LCC, SEAT:A351-CF8M, TRIM:316 SS, SPRING:ALLOYX750, NON-SLAM, NACE0175, 14"/F MFG: DFT MODEL: 31-8K1C-4A5	
470	1	PCV-1092	VALVE, CONTROL, V-BALL, 3"-150#RF, FC, 750PSID MAX, CL VI, Cv(1)=321, LH STYL C POS 1, BODY:WCC, TRIM:317 SS, NACE0175,W/ DVC6200, 67 REG MFG: FISHER MODEL: 2052-2-V200 / DVC6200	
471	1	PCV-1298	VALVE, CONTROL, GLOBE, 2"-600#RF, FO, 1410PSID MAX, 1" PORT, CL IV, Cv(1)=21.6, BODY:LCC,MICRO FORM, NACE0175, SIZE 4OACTR, 0-33PSIG MFG: FISHER MODEL: D4	
472	1	PCV-1302	VALVE, CONTROL, GLOBE, 1"-600#RF, FO, 1480PSID MAX, 3/8" PORT, CL V, Cv(1)=12.3, BODY:LCC, MICRO FORM, NACE0175, SIZE 34 ACTR, 0-18PSIG MFG: FISHER MODEL: 657-34 D BODY	
500	1	PCV-1326	VALVE, CONTROL, GLOBE, 2"-150#RF, FC, 285PSID MAX, 1/2" PORT, CL IV, Cv(1)=6.27, BODY:LCC, MICRO FORM, NACE0175, SIZE 40 ACTR, 0-33PSIG MFG: FISHER MODEL: D4	
501	1	PCV-1327	VALVE, CONTROL, GLOBE, 2"-300#RF, FC, 740PSID MAX, 1/2" PORT, CL IV, Cv(1)=6.27, BODY:LCC, MICRO FORM, NACE0175, SIZE 40 ACTR, 0-33PSIG MFG: FISHER MODEL: D4	
502	1	PCV-1328	VALVE, CONTROL, GLOBE, 2"-600#RF, FC, 1480PSID MAX, 1/2" PORT, CL IV, Cv(1)=6.27, BODY:LCC, MICRO FORM, NACE0175, SIZE 40 ACTR, 0-33PSIG MFG: FISHER MODEL: D4	
530	3	LLG-190N	VALVE SET, GAUGE, 3/4"-NPT,NACE MFG: PENBERTHY MODEL: 330J-NACE	
550	7	NVS-1009	VALVE, NEEDLE, MULTIPOINT GAUGE, 3/4"-MNPT (EXTENDED) X 3x1/2"-FNPT, MAWP:10000PSIG@100F, BODY:316 SS, SEAT:316 SS, TRIM:316 SS, PACKING:TEFLON,NACE0175 MFG: CENTURY MODEL: CM11L-1-M64T-CN-T-SP100	
551	8	BV-1035	VALVE, COMPRESSOR ANALYZER, 1/2"NPT MFG: KIENE MODEL: CV-72LH	
552	8	BV-1096	CAP, INDICATOR VALVE, W/ BRASS PLUG & LANYARD MFG: KIENE VALVE MODEL: AX-17A	
553	0	PNL.0003	PANEL MOUNTED BLOCK AND BLEED MANIFOLD (1/2"-FNPT) AND TESTTEE, 316SS, NACE MRO175 / ISO15156 MFG: ROSEMOUNT MODEL: 0306BT22BA11SG (QTY: 7, c/w PANEL)	
570	1	PSV-1205	VALVE, RELIEF, 1-1/2"-150#RF X 3"-150#RF, H, CONV, BOLTED BONNET, BODY:A216-WCB, TRIM:316SS, SEAT:316 SS, SPRING:INCONEL, NACE0175 MFG: AG CROSBY MODEL: 1-1/2 H 3 JOS-E-15-J-N2	
571	1	PSV-1245	VALVE, RELIEF, 1-1/2"-300#RF X 3"-150#RF, G, CONV, THREADED BONNET, BODY:A216-WCB, TRIM:316 SS, SEAT:316 SS, SPRING:INCONEL, NACE0175 MFG: CROSBY MODEL: 1-1/2 G 3 JOS-E-35-J-N2	
572	1	PSV-1238	VALVE, RELIEF, 1"-600#RF X 2"-150#RF, E, CONV, THREADED BONNET, BODY:A216-WCB, TRIM:316 SS, SEAT:316 SS, SPRING:INCONEL, NACE0175 MFG: CROSBY MODEL: 1 E 2 JOS-E-45-J-N2	

BILL OF MATERIALS				
MK	QTY	PART NUMBER	DESCRIPTION	
270	9	LLS-1022	SWITCH, LEVEL, FLOAT, 2"-MNPT, MAWP:1500PSIG@400F, 0.45 SG MIN, SPST, ELECTRIC, 3.07" INS LG, MANUAL OVERRIDE, XP, BODY:316 SS, TRIM:316 SS, SOUR MODEL: 1510C-G2A-C-L1-ES-CSCVMC	
321	4	TOW-1082	THERMOWELL, TAPERED, 1"-MNPT X 1/2"-FNPT, 10.5" U, 12" OAL,0.26" BORE, MAWP:6000PSIG@400F, BODY:316/316L SS, SWEET MFG: WIKA MODEL: TW15-M-A-I-NF-UD-10500-01750-G3-A-1063-0625ZZZ12000Z7ZFZYQ2	
331	4	TCP-1041	THERMOCOUPLE, K, SINGLE ELEMENT, PLAIN, 10.5" PROBE, 1/4" OD, 10FT LEAD, PIGTAIL, SS OVERBRAIDED MFG: WESTERN GAUGE MODEL: 1K1BKU10.5Z3120FTA	
333	1	TOW-1077	THERMOWELL, TAPERED, 3/4"-MNPT X 1/2"-FNPT, 2.5" U, 4.25" OAL, 0.26" BORE, MAWP:7038PSIG@300F, BODY:316 SS, SOUR MFG: WESTERN GAUGE MODEL: 3/4-040-316T	
334	6	TOW-1086	THERMOWELL, TAPERED, 1/2"-MNPT X 1/2"-FNPT, 4.5" U, 6" OAL,0.260" BORE, MAWP:7038PSIG@300F, BODY:316 SS, NACE0175 MFG: MODEL: 1/2-060-316T	
335	1	TOW-1077	THERMOWELL, TAPERED, 3/4"-MNPT X 1/2"-FNPT, 2.5" U, 4.25" OAL, 0.26" BORE, MAWP:7038PSIG@300F, BODY:316 SS, SOUR MFG: WESTERN GAUGE MODEL: 3/4-040-316T	
336	1	TI-1018	IND, TEMP, 0-250F, 5"DIAL, 1/2"-NPT, 1/4" X 2-1/2", CBM, SS MFG: WIKA MODEL: 50025D006G4	
337	1	TCP-K553	THERMOCOUPLE, TYPE "K", 1/2"-NPT, 5.5" U-LENGTH MFG: WESTERN GAUGE MODEL: 1K1BKU5.5Z3120FTA	
338	8	TCP-K753	THERMOCOUPLE, "K", 1/2" NPT, 1/4" OD X 7-1/2" STEM, 316 SS MFG: WESTERN GAUGE MODEL: 1K1BKU7.5Z3120FTA	
340	0	PNL-114	TRANSDUCER, 1/P, 4-20 mA IN, 6-30 PSIG OUT, CSA MFG: FISHER MODEL: I2P-X2B (QTY: 3, c/w PANEL)	
350	0	SOL-002	VALVE, SOL, 3/2, 1/4"FNPT, 115PSID MAX, 3/32"ORF, NC, 24VDC, SST MFG: ASCO MODEL: EFB320G202-24 (QTY: 4, c/w CONTROL PANEL)	
370	0	NPN	TRANSMITTER PRESSURE: 0-800PSIG ROSEMOUNT MODEL: 2051 (QTY: 7, c/w PANEL)	
400	1	BVF-1022	VALVE, BALL, 2"-600#RF, RP, 2PCS, FL, NACE MFG: JAG MODEL: FB2-R20R06N	
401	3	BVF-1039	VALVE, BALL, 2"-600#RF, FP, 2PCS, FL, NACE MFG: JAG MODEL: FB2-F20R06N	
404	1	GBF-1061	VALVE, GLOBE, 1"-600#RF, BODY:A350-LF2, SEAT:A479-410 SS, TRIM:316 SS, BOLTED BONNET, NACE0175 MFG: NEWCO MODEL: 26F-L24/3-1"	
405	2	GBF-1062	VALVE, GLOBE, 2"-600#RF, BODY:A352-LCC, SEAT:A479-410 SS, TRIM:316 SS, BOLTED BONNET, NACE0175 MFG: NEWCO MODEL: 26F-LCC4/2-2	
406	1	GBF-0011	VALVE, GLOBE, 2"-300#RF, NACE MFG: NEWCO MODEL: 23F-FS4/3-INT	
410	1	BVS-022FN	VALVE, BALL, 1/4"-NPT, CL2000, FP, NACE MFG: NUTRON MODEL: 5A-T3F02S20SZ	
412	9	BV-1193	VALVE, BALL, 1/2"-FNPT, CL1500, BODY:A105N, SEAT:DELIN, TRIM:316 SS, FP, FLOATING, 3 PIECE THREADED, LOCKABLE LEVER, NACE MFG: JAG MODEL: T3-F05T15N	
414	7	BV-1069	VALVE, BALL, 2"-150#RF, FL, FP, NACE MFG: JAG MODEL: FB2F20R01N	
415	1	BV-1038	VALVE, BALL, 1"-600#RF, FP, 3PCS, FL, NACE MFG: JAG MODEL: T3-F10R06N	

BILL OF MATERIALS				
MK	QTY	PART NUMBER	DESCRIPTION	
1	0	NPN	COOLER LOUVRE ACTUATOR (QTY: 2, C/W COOLER)	
38	1	BWF-HOD	FLANGE, HUB, 2"-150#RF X 1"-NPT, SA-105N	
39	1	BWF-1449	FLANGE, HUB, 1-1/2"-600#RF X 1"-NPT, SA-350-LF2	
40	1	BWF-C3F	FLANGE, BLIND, RF, 3"-600#, SA105N	
41	3	BWF-1271	FLANGE, HUB, 3"-600#RF X 2"-NPT, SA-105N	
42	2	BWF-1203	FLANGE, HUB, 1"-600#RF X 1/2"-NPT, SA-105N	
49	1	BWF-1449	FLANGE, HUB, 1-1/2"-600#RF X 1"-NPT, SA-350-LF2	
50	3	BWF-1276	FLANGE, HUB, 3"-150#RF X 2"-NPT, SA-105N	
51	3	BWF-1082	FLANGE, HUB, 3"-300#RF X 2"-NPT, SA105N	
52	1	BWF-H1CL	FLANGE, HUB, 1-1/2"-300#RF X 1"-NPT, SA-350-LF2	
53	2	BWF-2004	FLANGE, HUB, 1"-300#RF X 1/2"-NPT, SA-105N	
54	2	BWF-1159	FLANGE, HUB, 1"-150#RF X 1/2"-NPT, SA-105N	
56	1	BWF-1285	FLANGE, HUB, 3"-150#RF X 3/4"-NPT, SA-105N	
57	2	BWF-1249	FLANGE, HUB, 2"-150# X 3/4"-NPT, SA105N	
58	1	BWF-1288	FLANGE, HUB, 3"-300#RF X 3/4"-FNPT, SA-105-N	
59	5	BWF-C3A	FLANGE, BLIND, RF, 1"-600#, SA105N	
60	3	BWF-C1A	FLANGE, BLIND, RF, 1"-300#, SA105N	
61	1	BWF-H1CL	FLANGE, HUB, 1-1/2"-300#RF X 1"-NPT, SA-350-LF2	
62	1	BLR-1023	BLEED RING, 6"-150#RF, 1-1/2" THK, 1 X 3/4" DRILL & 2 X 3/4"-NPT TAP @90°, SA-516-70N	
63	2	BLF-0022	BLEED RING, 6"-150#RF, 3/4"-NPT, 1-1/2" THICK, SA-516-70N	
64	2	BLF-0039	BLEED RING, 4"-300#RF, 1-1/2" THK, SA-516-70N, TAPPED 3/4"-NPT	
65	2	BLF-0043	BLEED RING, 3"-600#RF, 1-1/2" THK, SA-516-70N, TAPPED 3/4"-NPT	
66	1	BLR-1025	BLEED RING, 3"-600#RF, 1-1/2" THK, 1 X 3/4" DRILL & 3/4"-NPT TAP, SA-516-70N	
70	3	LLG-119N	GAUGE, LEVEL, REFLEX, 1/2"-NPT, SOUR MFG: PENBERTHY MODEL: 1RM9-NACE	
180	2	OP-1082	ORIFICE PLATE, 6"-300#RF, BORE:4.000", 1/8" THK, 316 SS, SQUARE EDGE, W/ ID TAB	
181	2	OP-1083	ORIFICE PLATE, 6"-300#RF, BORE:3.250", 1/8" THK, 316 SS, SQUARE EDGE, W/ ID TAB	
182	1	OP-1087	ORIFICE PLATE, 4"-300#RF, BORE:2.750", 1/8" THK, 316 SS, SQUARE EDGE, W/ ID TAB	
183	2	OP-1085	ORIFICE PLATE, 4"-600#RF, BORE:2.250", 1/8" THK, 316 SS, SQUARE EDGE, W/ ID TAB	
184	2	OP-1085	ORIFICE PLATE, 4"-600#RF, BORE:2.250", 1/8" THK, 316 SS, SQUARE EDGE, W/ ID TAB	
185	1	OP-1086	ORIFICE PLATE, 3"-600#RF, BORE:1.875", 1/8" THK, 316 SS, SQUARE EDGE, W/ ID TAB	
186	1	OP-1081	ORIFICE PLATE, 6"-150#RF, BORE:4.750", 1/8" THK, 316 SS, SQUARE EDGE, W/ ID TAB	
187	1	OP-1084	ORIFICE PLATE, 4"-300#RF, BORE:2.500", 1/8" THK, 316 SS, SQUARE EDGE, W/ ID TAB	
200	0	POS-1002	POSITIONER, 4-20mA HART, LOW BLEED, AUTO & REMOTE CALIBRATION, CSA, XP, INTRIN SAFE, C/W SUPPLY/OUTPUT GAUGES: 0-60PSIG, REGULATOR: 0-35PSIG (ADJ), 1/4"-NPT BONNET MFG: FISHER MODEL: DVC6200HC / 87CFR (QTY: 1, c/w SPCV)	
230	1	CST-1046	STRAINER, CONE, SS, 6" 150# RF, SCH 160, 150%OA, 316SS, 40 MESH	
231	1	CST-1080	STRAINER, CONE, SS, 4" 300# RF, S160, 150%OA, 316SS, 40 MESH	

THIS DRAWING IS SOLE PROPERTY OF BIDE LL EQUIPMENT AND SHALL NOT BE REPRODUCED, COPIED, LENT, ALTERED NOR USED FOR ANY PURPOSE OTHER THAN WHICH IT IS FURNISHED EXCEPT WITH THE WRITTEN PERMISSION OF BIDE LL EQUIPMENT

ISSUED FOR CONSTRUCTION

IFC

2015/11/17

UNIT NUMBER

- 14-928
- 14-929
- 14-930

Handwritten initials

D	15-11-17	GW	GT	AH	REVISED VALVE TO LOW TEMP.
REV	DATE	CREATED	REVIEWED	APPROVED	DESCRIPTION
REVISIONS					
MAIN SHOP / OFFICE 6900 - 112th AVENUE S.E. CALGARY, AB T2C 4Z1 PHONE: (403) 235-5877 FAX: (403) 272-7748		BIDELL TM GAS COMPRESSION		APEGA PERMIT NUMBER POB318	
SOUR PROCESS FLOW					
WEG 600HP ELECTRIC/ARIEL JGR/4/AIR-X-LIMITED 108EF					
CUSTOMER: ENCAN A c/o EQUINOX ENGINEERING					
LOCATION: KAYBOB GAS PLANT				SHEET#: 4 OF 4	
LSD: 15-31-062-21 W5M				JOB#: 14-Q303	
PAPER SIZE 11"x17"	SCALE N/A	DWG#	14-Q303-700		REV D