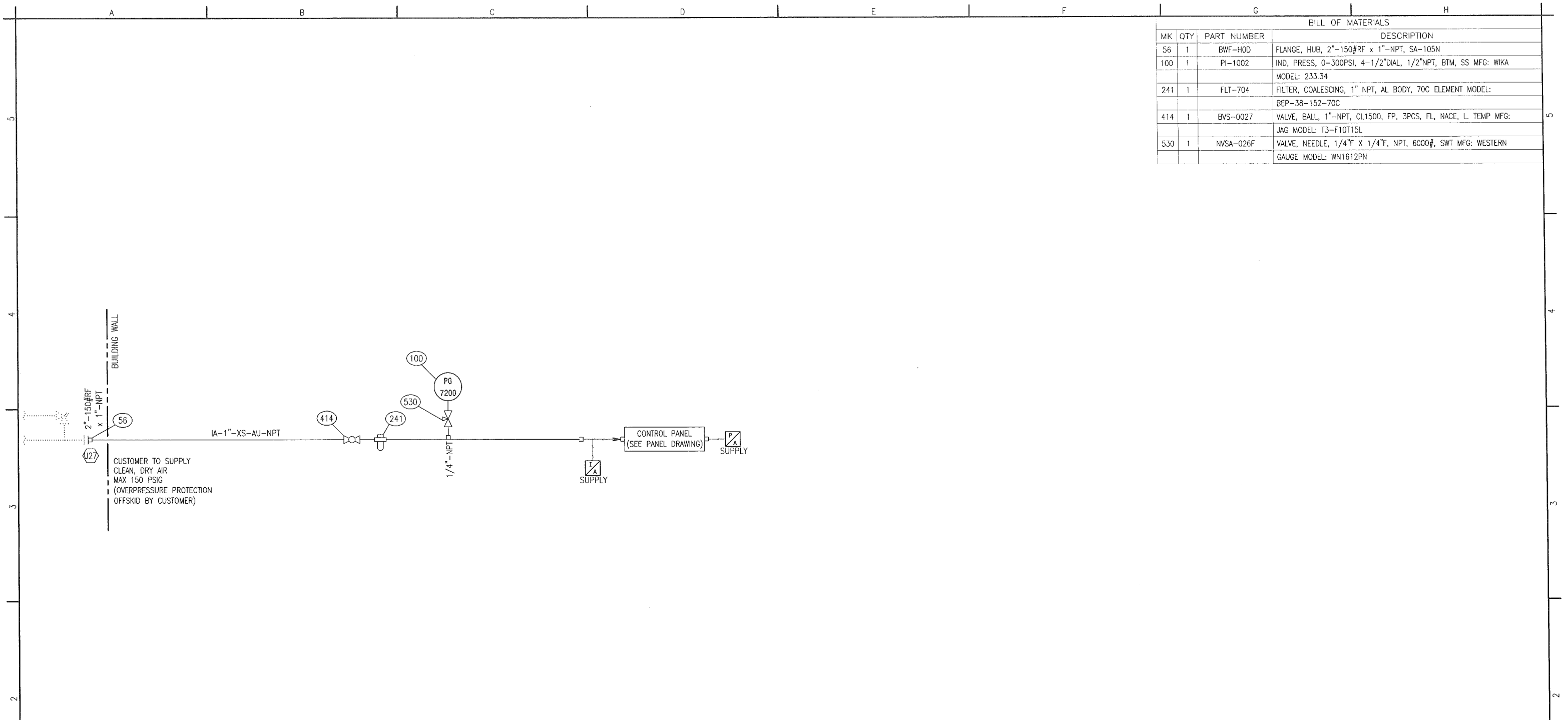


BILL OF MATERIALS			
MK	QTY	PART NUMBER	DESCRIPTION
56	1	BWF-H0D	FLANGE, HUB, 2"-150#RF x 1"-NPT, SA-105N
100	1	PI-1002	IND. PRESS, 0-300PSI, 4-1/2"DIAL, 1/2"NPT, BTM, SS MFG: WIKA MODEL: 233.34
241	1	FLT-704	FILTER, COALESCING, 1" NPT, AL BODY, 70C ELEMENT MODEL: BEP-38-152-70C
414	1	BVS-0027	VALVE, BALL, 1"-NPT, CL1500, FP, 3PCS, FL, NACE, L. TEMP MFG: JAG MODEL: T3-F10T15L
530	1	NVSA-026F	VALVE, NEEDLE, 1/4"F X 1/4"F, NPT, 6000#, SWT MFG: WESTERN GAUGE MODEL: WN1612PN



STANDARD TUBING SIZES	LINETYPE LEGEND	PNEUMATIC TERMINATIONS	INSTRUMENTATION TAGGING LEGEND
*1/4" - 0.049" *3/8" - 0.049" 1/2" - 0.049" 3/4" - 0.065" 1" - 0.083" *PER CLIENT SPEC	PROCESS PIPING ——— UTILITY PIPING ——— SEAMLESS TUBING ——— ELECTRICAL WIRING - - - - - INTERNAL LOGIC - - - - - OEM SUPPLIED - - - - - ASSEMBLY BOUNDARY - - - - - BUILDING WALL - - - - - DRIVETRAIN ——— CUSTOMER SUPPLIED ·····	INSTRUMENT AIR PANEL AIR	LOCAL MOUNTED DEVICE PANEL MOUNTED DEVICE OFF-SKID MOUNTED DEVICE SIGNAL TO PANEL SIGNAL TO OFF-SKID PANEL LOGIC
ALL TUBING TO BE 316SS			

THIS DRAWING IS SOLE PROPERTY OF BIDELL EQUIPMENT AND SHALL NOT BE REPRODUCED, COPIED, LENT, ALTERED NOR USED FOR ANY PURPOSE OTHER THAN WHICH IT IS FURNISHED EXCEPT WITH THE WRITTEN PERMISSION OF BIDELL EQUIPMENT

**ISSUED FOR CONSTRUCTION**

# IFC

2015/07/27

**UNIT NUMBER**

14-928   
14-929   
14-930

REV	DATE	CREATED	REVIEWED	APPROVED	DESCRIPTION
A	15-06-19	GW	TT	GM	ISSUED FOR CONSTRUCTION
REVISIONS					
MAIN SHOP / OFFICE 6900 - 112th AVENUE S.E. CALGARY, AB T2C 4Z1 PHONE: (403) 235-5877 FAX: (403) 272-7749		<b>BIDELL™</b> GAS COMPRESSION		APEGA PERMIT NUMBER P08318	
INSTRUMENT SUPPLY FLOWSHEET					
WEG 350HP ELECTRIC/ARIEL JGR/2/AIR-X-LIMITED 96AEF					
CUSTOMER: ENCANIA c/o EQUINOX ENGINEERING					
LOCATION: KAYBOB GAS PLANT PHASE 3				SHEET#: 1 OF 1	
LSD: 15-31-062-21 W5M				JOB#: 14-Q303	
PAPER SIZE 11"x17"	SCALE NTS	DWG#	14-Q303-720		REV A