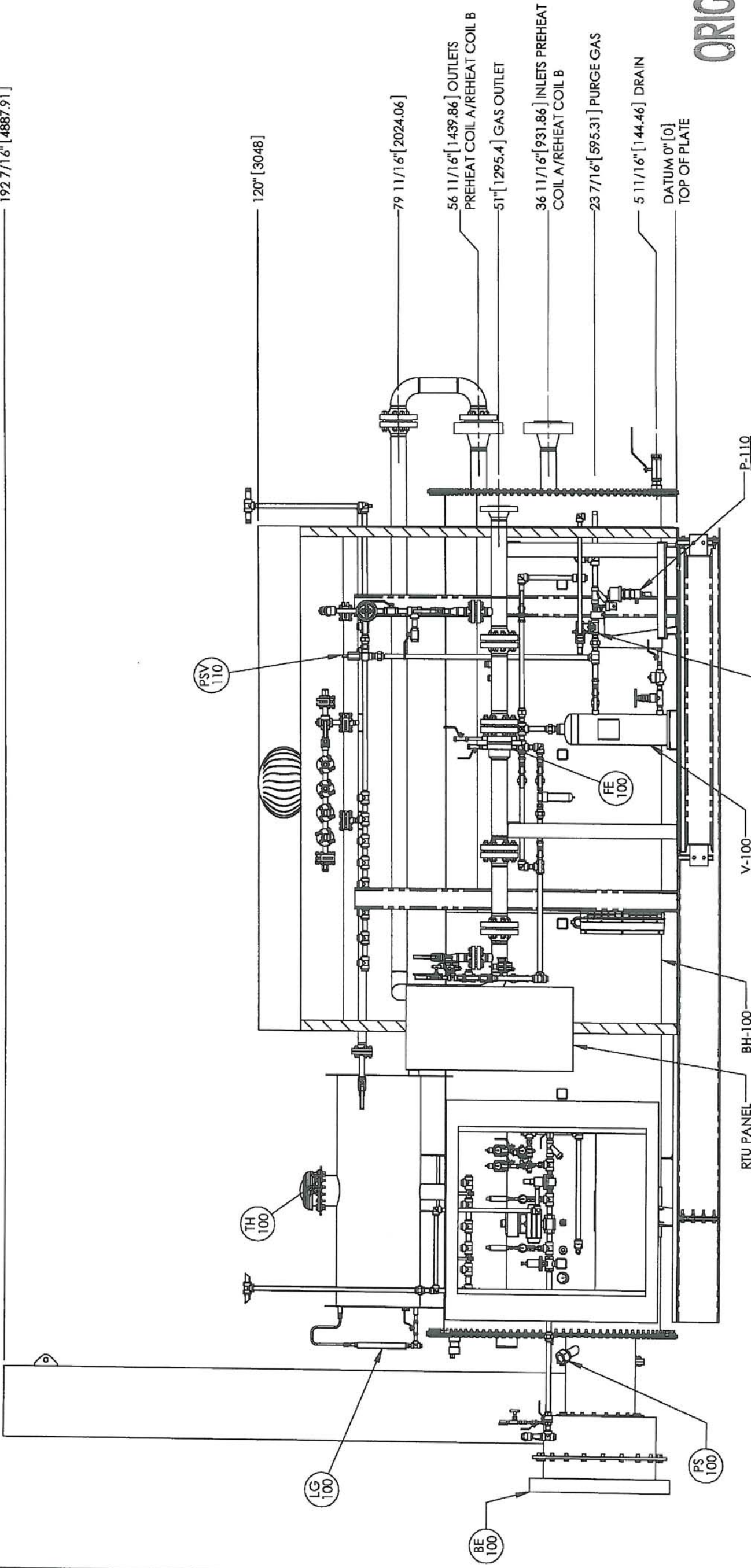


192 7/16" [4887.91]



FRONT VIEW
SCALE: 1:30

ORIGINAL

ENCANA PO#
44606
LSD:TBD

ENCANA CORPORATION LINEHEATER AND METERING PACKAGE 2.00 MMBTU/HR, 62" OD X 240" SIS (1) 4" - 600# JR METER RUN GENERAL ARRANGEMENT	DATE: MAR 12/13 SHEET: 2 OF 3	CHK: [Signature] APP: [Signature]	DATE: JUL 31 2014 DATE: JUL 30 2013	REV: 0
--	----------------------------------	--------------------------------------	--	--------

NWP INDUSTRIES INC.
Total oilfield supply.
P.O. BOX 6280, INNISFAIL, AB T4G 1S9
PH: (403) 227-4100 FAX: (403) 227-4102

SCALE: AS NOTED

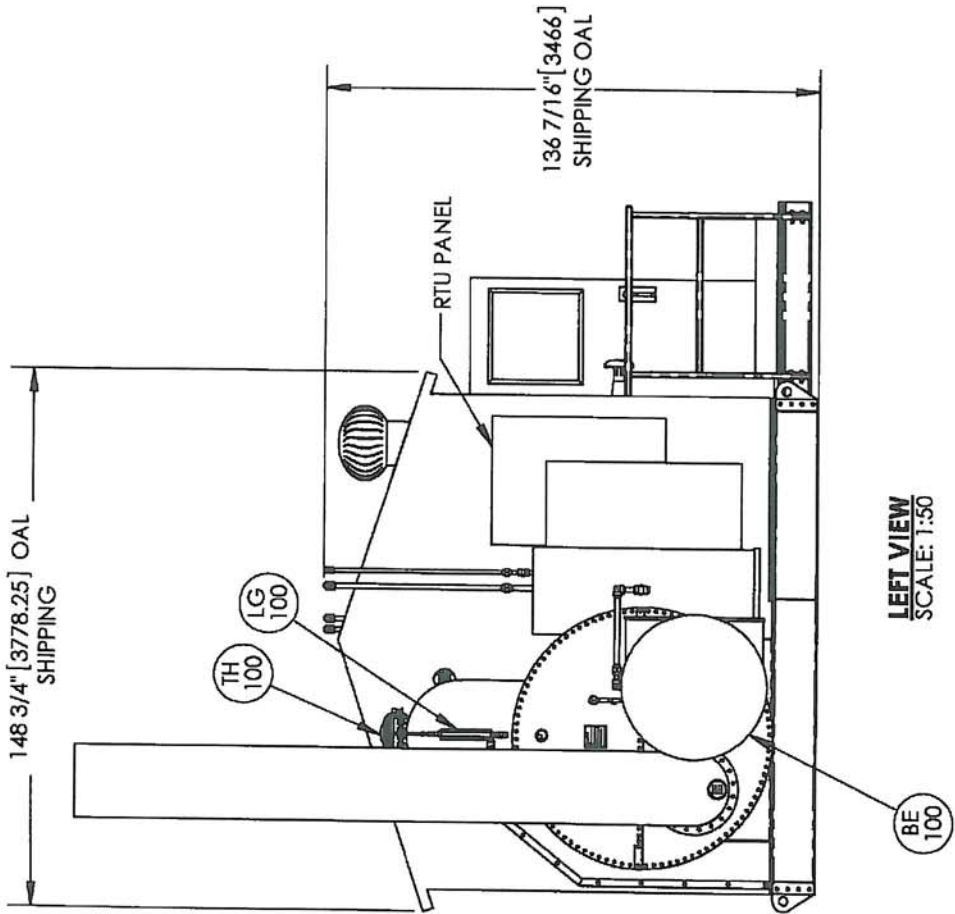
ISSUED FOR CONSTRUCTION
SIGNED: [Signature]
DATE: JUL 31 2014
8770/008
S/N: NWP-08370-008

REV.	DATE	BY:	CHK:	APP:	DESCRIPTION
0	JUL 29/13	[Signature]	[Signature]	[Signature]	ISSUED FOR CONSTRUCTION
A	JUL 08/13	[Signature]	[Signature]	[Signature]	ISSUED FOR APPROVAL

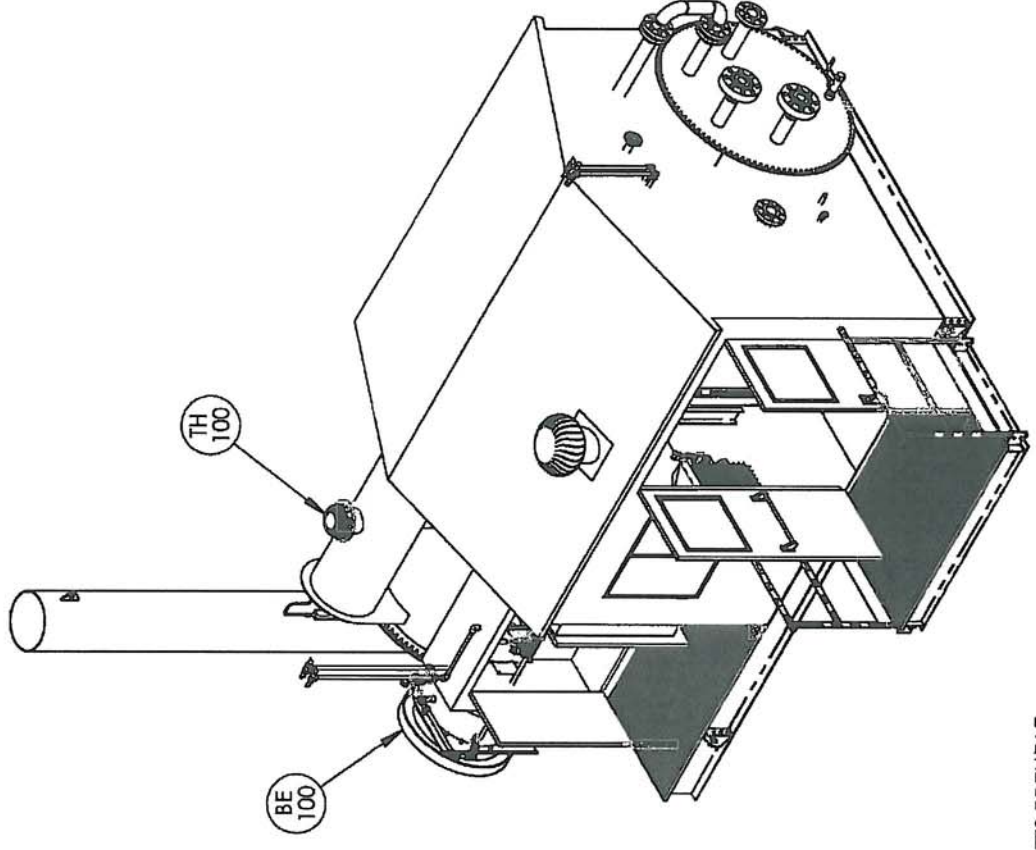
DOCUMENT NO.	DESCRIPTION	REFERENCE DRAWINGS
08684-001-002-B-001	BATH ASSEMBLY	
08684-001-002-C-001	COIL ASSEMBLY	
08684-001-002-S-001	SKID ASSEMBLY	
08684-001-002-A-001	PIPING ASSEMBLY	
08684-001-002-W-001	WELDED PIPING ASSEMBLY	
08770-001-008-P-001	PIPING & INSTRUMENTATION DIAGRAM	

AS BUILT

COPYRIGHT © 2012 NWP THIS DRAWING IS PROPERTY OF NWP INDUSTRIES INC. AND MAY NOT BE REPRODUCED WITHOUT PERMISSION. THIS DRAWING MUST BE RETURNED UPON REQUEST.



LEFT VIEW
SCALE: 1:50



ISOMETRIC VIEW
SCALE: 1:50

ORIGINAL

ENCANA PO#
44606
LSD:TBD

ENCANA CORPORATION LINEHEATER AND METERING PACKAGE 2.00 MMBTU/HR, 62" OD X 240" SIS (1) 4" - 600#-JR METER RUN GENERAL ARRANGEMENT	
DWN: VW	CHK: [Signature]
DATE: MAR 12/13	DATE: JUL 31 2013
SHEET: 3 OF 3	DWG: 08770-001-008-G-001
REV: 0	REV: 0

NWP INDUSTRIES, INC.
Total oilfield supply.

P.O. BOX 6280, INNISFAIL, AB T4G 1S9
PH: (403) 227-4100 FAX: (403) 227-4102

SCALE: AS NOTED

ISSUED FOR CONSTRUCTION

SIGNED: [Signature]
DATE: JUL 31 2014

08770-008

S/N: NWP-08770-008

ALL DIMENSIONS IN INCHES

REV.	DATE	BY:	CHK:	APP:	DESCRIPTION
0	JUL 29/13	CT	[Signature]		ISSUED FOR CONSTRUCTION
A	JUL 08/13	CT			ISSUED FOR APPROVAL

DOCUMENT NO.	DESCRIPTION
08664-001-002-B-001	BATH ASSEMBLY
08664-001-002-C-001	COIL ASSEMBLY
08664-001-002-S-001	SKID ASSEMBLY
08664-001-002-A-001	PIPING ASSEMBLY
08664-001-002-W-001	WELDED PIPING ASSEMBLY
08770-001-008-P-001	PIPING & INSTRUMENTATION DIAGRAM

ENCANA PO#	ENCANA PO#
44606	44606

ENCANA PO#	ENCANA PO#
44606	44606

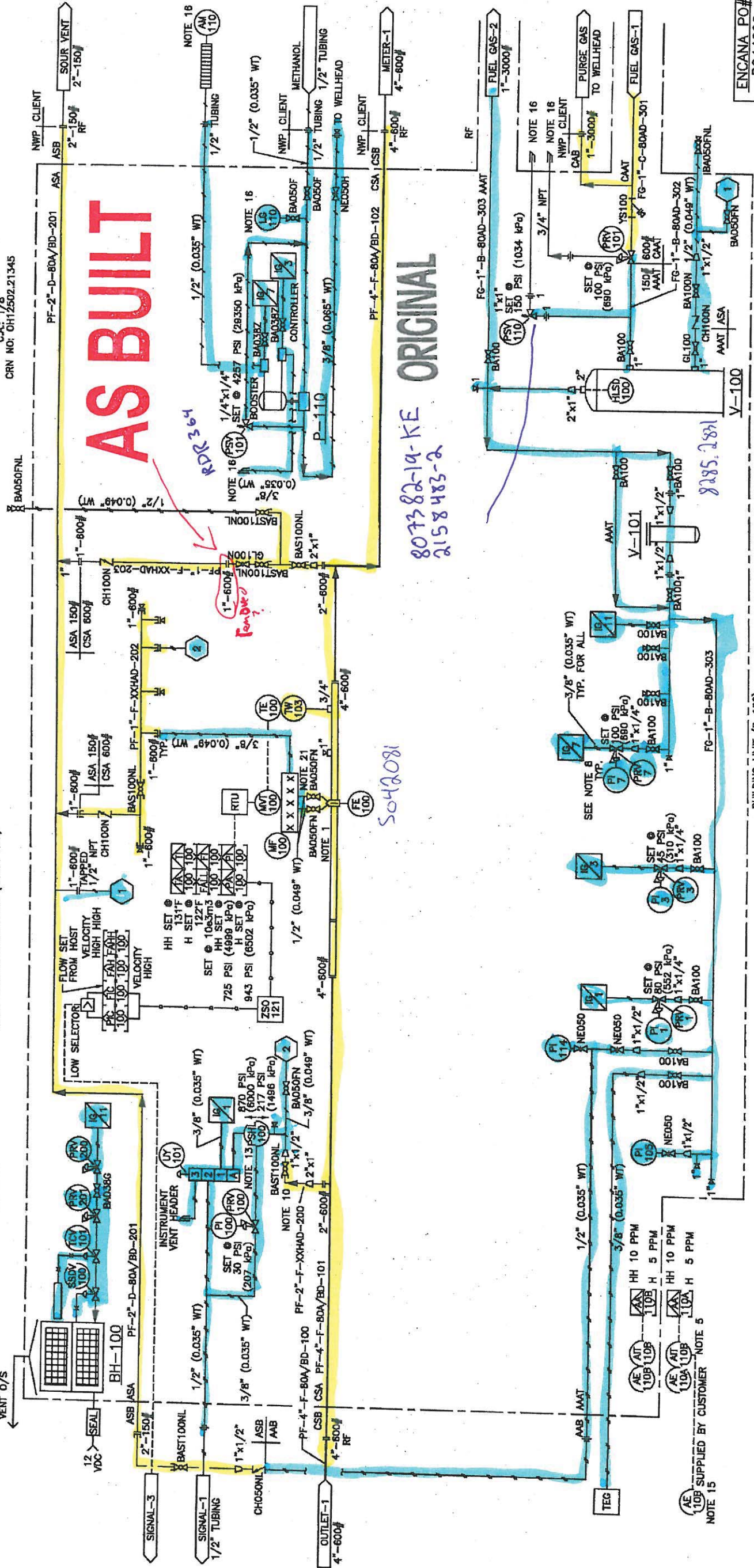
COPYRIGHT © 2012 NWP THIS DRAWING IS PROPERTY OF NWP INDUSTRIES INC. AND MAY NOT BE REPRODUCED WITHOUT PERMISSION. THIS DRAWING MUST BE RETURNED UPON REQUEST.

BH-100
BUILDING HEATER
MFR: CATADYNE
SIZE: 24" x 24"
12 VOC
NATURAL GAS

P-110
METHANOL PUMP
MFR: WILLIAMS
MDL NO: CR550V400R7C
1/2" PLUNGER
MAX. DISCHARGE 9200 PSI (63431 kPa)

V-101
FUEL GAS FILTER
MFR: HEADLINE
MDL NO: 360A
MAMP 500 PSI, 1/2" NPT

V-100
FUEL GAS SCRUBBER
MFR: LOTECH
SIZE: 8 5/8" OD x 30" OAL
MAMP: 285 PSI (1965 kPa) @ 650°F
C.A.: 1/8"
CRN NO: OH12502.21345



ENCANA PO#
P044606

ENCANCA CORPORATION
LINEHEATER AND METERING PACKAGE
2.0 MMBTU/HR 62" OD x 240" S/S
(1) 4"-600 ANSI JR METER RUNS
PIPING & INSTRUMENTATION DIAGRAM

NWP INDUSTRIES INC.
Total on/off sold supply.
P.O. BOX 4280, INNESTAD, AB T4G 1S9
PH: (403) 227-4100 FAX: (403) 227-4102

ISSUED FOR CONSTRUCTION
SIGNED: [Signature]
DATE: JUL 29 2013
8770-008
S.N. NWP-0870-008

DOCUMENT NO.	DESCRIPTION	REV	DATE	BY	CHK	APP	DESCRIPTION
08684-001-002-9-001	BATH ASSEMBLY						
08684-001-002-0-001	COIL ASSEMBLY						
08684-001-002-5-001	SKID ASSEMBLY						
08684-001-002-4-001	PIPING ASSEMBLY	0	JUL 29/13	CT			ISSUED FOR CONSTRUCTION
08770-001-008-G-001	GENERAL ARRANGMENT	A	JUNE 26/13	EP			ISSUED FOR APPROVAL

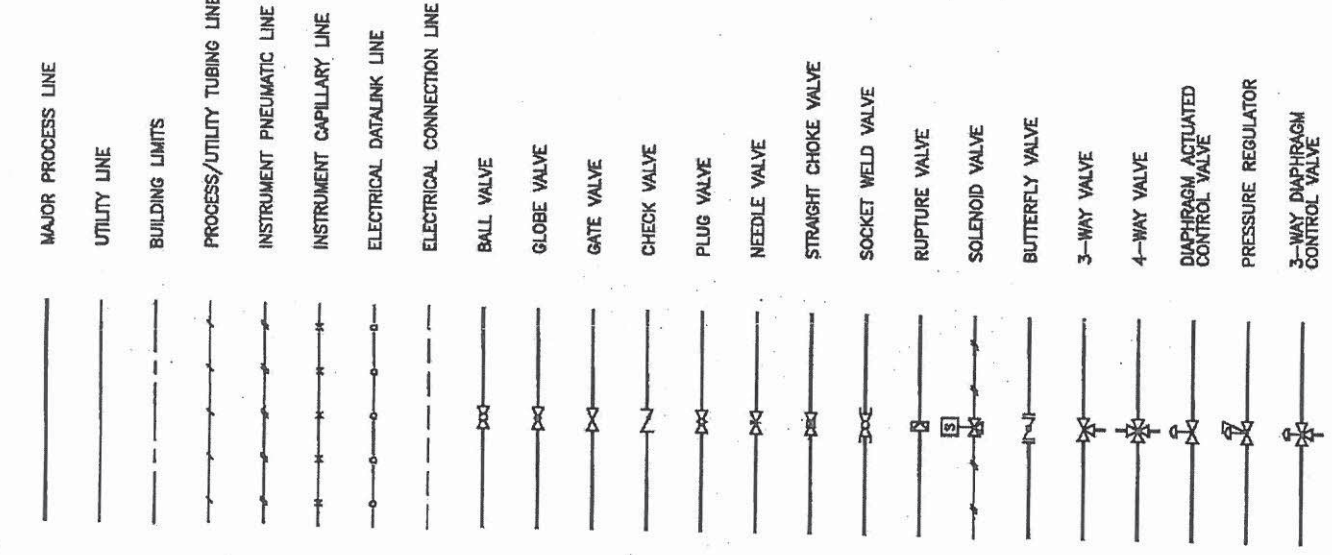
REFERENCE DRAWINGS
DRAWING REVISIONS
THIS DRAWING IS PROPERTY OF NWP INDUSTRIES INC. AND MAY NOT BE REPRODUCED WITHOUT PERMISSION. THIS DRAWING MUST BE RETURNED UPON REQUEST.

DWN: EP
DATE: MAR 11/13
SCALE: N.T.S.
SHEET: 1 OF 3
DWG: 08770-001-008-P-001
REV: 0

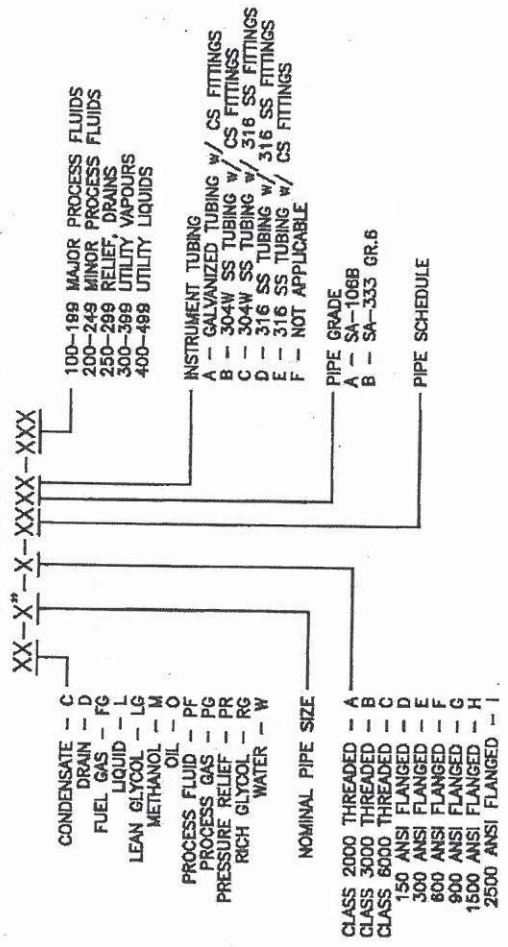
NOTES

- PIPE SUPPORTS WHERE REQUIRED.
- SHIP LOOSE ITEMS TO BE BOXED AND SEALED PRIOR TO SHIPMENT.
- PLUG ALL OUTLETS PRIOR TO SHIPMENT.
- ELECTRICAL BY NWP.
- MOUNT DUAL CHANNEL H2S DETECTOR OUTSIDE BUILDING ON FLANGE SUPPORT MOUNTED TO CHOKE VALVE FV-100.
- 2" FOAM INSULATION UNDER BUILDING FLOOR.
- 316 SS SEAMLESS TUBING AND 316 SS FITTINGS.
- VENT V-100 SUPPLIED INSTRUMENTS TO COMMON 1" VENT. HEADER.
- FT-100 IS MOUNTED TO CHOKE VALVE FV-100.
- NO LIQUID TRAPS.
- VENT VALVE TRAIN ENCLOSURE INSTRUMENTS TO COMMON 1" VENT. HEADER.
- SET POINT NOT TO EXCEED 800 ANSI @ 200F.
- REMOVABLE COIL INSPECTION PLATE.
- SPARE H2S SENSOR FOR CLIENT TO MOUNT ON WELLHEAD.
- VENT OUTSIDE BUILDING TO ATMOSPHERE AT EAVE HEIGHT.
- PROVISIONS FOR THE LEL DETECTOR WILL BE SUPPLIED. CLIENT WILL SUPPLY LEL MONITOR.
- INSTALL 1/2" ESD TUBING TEE AS CLOSE TO THE OUTSIDE WALL AS POSSIBLE.
- B149.3 COMPLIANT.
- ENCANA SPECS: (AS PER FEB 2013)
- ECA-PVF-S-01 REV A.2
- ECA-WELD-S-01 REV 0
- ECA-INST-S-01 REV C
- ECA-FIREH-S-01 REV A.1
- ECA-PVF-R-02 REV 2
- ECA-VESEL-S-01 REV 0
- ECA-PVF-S-04 REV 1.2
- ECA-COAT-S-01 REV 1
- 1/2" NIPPLES SCH. 40X
- VENT OUT ROOF AWAY FROM RTU PANEL.

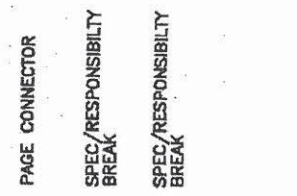
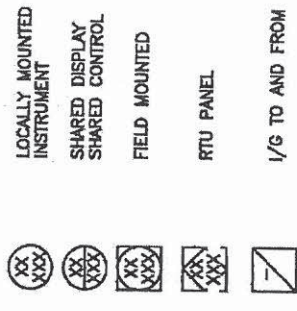
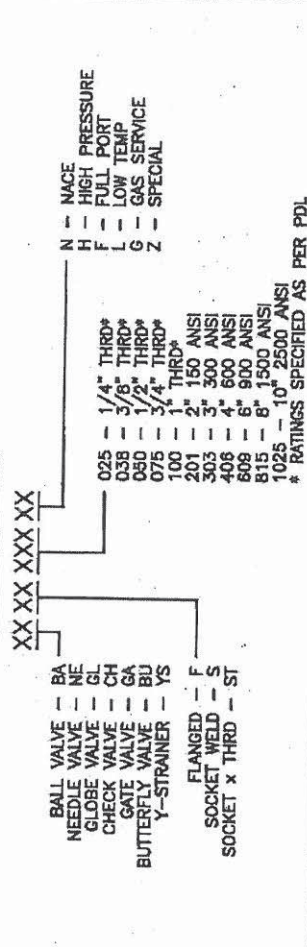
LEGEND



LINE TAGGING



VALVE TAGGING



ORIGINAL

ENCANA PO#
PO44606



Total offsite supply.
P.O. BOX 6280, INNSFALL, AB T4G 1S9
PH: (403) 227-4100 FAX: (403) 227-4102

ISSUED FOR CONSTRUCTION
SIGNED: [Signature]
DATE: JUL 27 2013
S/NWMP-08770-008

ENCANCA CORPORATION
LINEHEATER AND METERING PACKAGE
2.0 MMBTU/HR 62" OD x 240" S/S
(1) 4"-600 ANSI JR METER RUNS
PIPING & INSTRUMENTATION DIAGRAM LEGEND
DWN: EP
CHK: [Signature]
DATE: MAR 11/13
APP: [Signature]
SCALE: N.T.S.
SHEET: 3 OF 3
DWG: 08770-001-008-P-001 REV: 0

DOCUMENT NO.	DESCRIPTION	REV	DATE	BY	CHK	APP	DESCRIPTION
08684-001-002-B-001	BATH ASSEMBLY						
08684-001-002-C-001	COIL ASSEMBLY						
08684-001-002-S-001	SKID ASSEMBLY						
08684-001-002-A-001	PIPING ASSEMBLY	0	JUL 29/13	CT	[Signature]		ISSUED FOR CONSTRUCTION
08770-001-008-G-001	GENERAL ARRANGMENT	A	JUNE 26/13	EP	[Signature]		ISSUED FOR APPROVAL

REFERENCE DRAWINGS
DRAWING REVISIONS
ALL DIMENSIONS IN INCHES
THIS DRAWING IS PROPERTY OF NWP INDUSTRIES INC. AND MAY NOT BE REPRODUCED WITHOUT PERMISSION. THIS DRAWING MUST BE RETURNED UPON REQUEST.