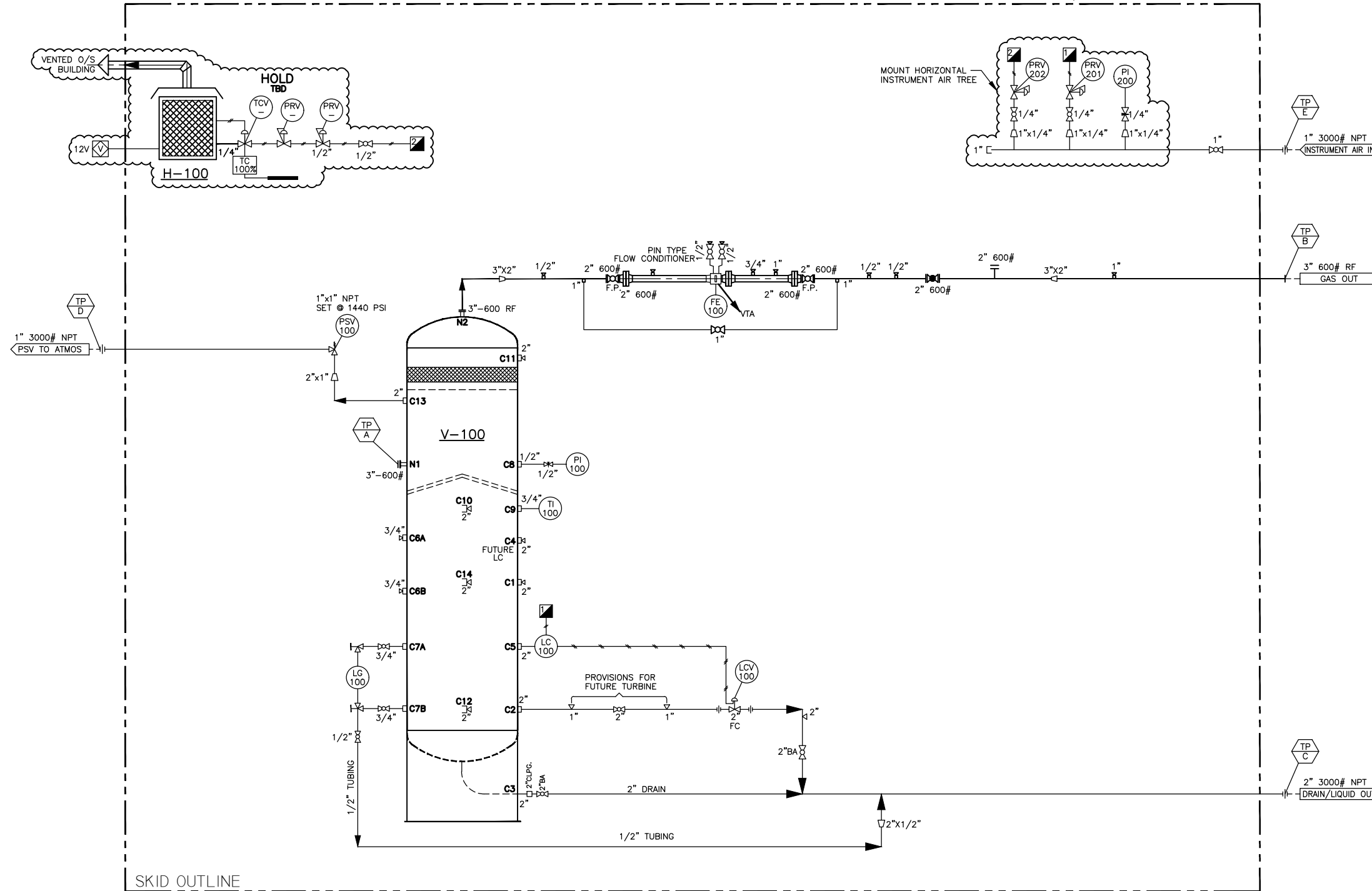


V-100
INLET SEPARATOR
 24"x7'-6"S/S
 MAWP 1440 PSI @ -20/100°F
 CA: 1/8", RT2
 REGISTERED IN AB, BC, SASK
 SN: 22134

HOLD
 H-100
BUILDING HEATER
 24"x24", 18,000 BTU/HR CATALYTIC CATALYTIC HEATER
 12V, NATURAL GAS c/w GRILL GUARD, HOOD
 9120 MAXITROL REGULATOR,
 MERTEK TEMPERATURE CONTROL 100% SHUT-OFF

* SEE PID-02 FOR BOM



The information contained in this drawing is the confidential property of Platinum Energy Services ULC. No part thereof shall be reproduced or communicated to a third party without written authorization from Platinum Energy Services ULC.

NOTES:
 1. SEE NOTES ON DRAWING PID-02.
 2. SEE BOM ON DRAWING PID-02.

REFERENCE DRAWINGS	REV	DESCRIPTION	BY	DATE	CHK'D	APP'D
PID-02		PIPING & INSTRUMENTATION DIAGRAM - BOM				
SKD-01		STRUCTURAL STEEL				
GA-01	0	ISSUED FOR CONSTRUCTION	EB	18-04-04	BX	DG

ENGINEER'S STAMP	

DRAWN BY	EB	18-04-04
CHK'D BY	BX	18-04-04
APP'D BY	DG	18-04-04
CADD REF	30620-PID-01.dwg	SCALE NTS

CLIENT	STOCK	
TITLE	24"OD x 7'-6" S/S 1440 PSI 3 PH DRESS 2PH SWEET SEPARATOR PIPING & INSTRUMENTATION DIAGRAM	
JOB NO.	30620	DRAWING NO. 30620-PID-01
REV	0	

