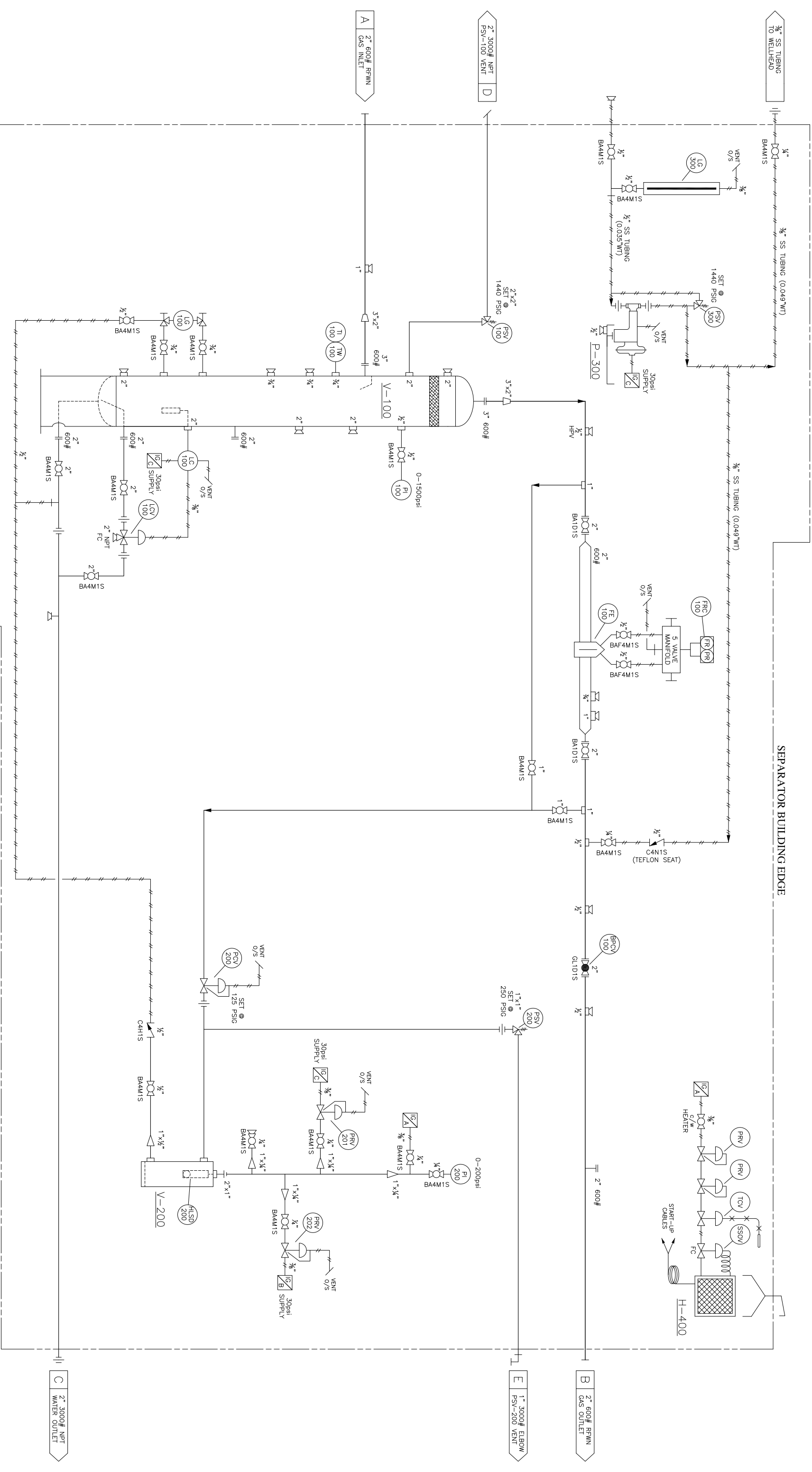


SEPARATOR BUILDING EDGE



DATE: 29/01/14 DESIGNED BY: M.E.W. DRAWN BY: E.Y.C. CHECKED BY: E.Y.C. APPROVED BY: J.H. SCALE: N.T.S.		CLIENT: PLATINUM ENERGY SERVICES ULC LSD:	
TITLE: MECHANICAL FLOW DIAGRAM 24"x7'-6" S/S 1440psi - 2 PHASE VERT. AB SOUR SERVICE SEPARATOR PACKAGE		JOB #: EV-14045 REF. NO.: PNID DRAWING: FLOW DIAGRAM SHEET NO.: 1 OF 2 DRAWING NO.: EV-14045-F-001 REV. NO.: 1	
REV 1 0	CORRECTED PAID / BOM ISSUED FOR CONSTRUCTION	REVISION BY APPR d/m/y	DATE 13/03/14 07/03/14

V-100

VERTICAL 3 PHASE TEST SEPARATOR

SIZE: 24" O.D. x 7'-6" S/S
 MAWP: 1440psi @ 130°F
 MDMT: -20°F @ 1440psi
 CRN FOR ALBERTA, SASK & BC
 INLET DEFLECTOR PLATE, 6" THK. 9lb/ft³ MISTEX
 RADIOGRAPHY: RT-2
 C.A.: 1/8"
 PMHT
 A - STAMPED
 DWG NO.: 4088-6 Rev2

V-200

FUEL GAS SCRUBBER

SIZE: 6" x 30" S/S
 MAWP: 285psi @ 100°F
 MDMT: -20°F @ 285psi
 C.A.: 1/8"
 c/w H/SD-200
 ASME SECTION VIII, DIV 1
 2010 EDITION

H-400

NATURAL GAS HEATER

MAKE: CATADYNE - 12x24WX
 SIZE: 12" x 24" 10,000BTU/HR
 12 VDC START, CSA APPROVED,
 7"wc NATURAL GAS THERMOCOUPLE,
 MERTIK SSOV, AC-R-912 REG
 c/w ASSEMBLED GAS TRAIN, 30' CABLES,
 HOOD VENT, PROTECTION GRILL

P-300

CHEMICAL INJECTION PUMP

MAKE: BRUN INSTRUMENTS
 MODEL: BR5103JP-1111
 16.8 GPD MAX
 3000psi MAX DISCHARGE PRESSURE
 10-35psi SUPPLY PRESSURE
 DUCTILE IRON FLUID END ASSEMBLY
 Buna Packing & O-RINGS
 SOUR SUPPLY GAS TRIM
 3/8" SST PLUNGER & TRIM
 1" NPT SUCTION, DISCHARGE
 & INSTRUMENT SUPPLY

BILL OF MATERIALS

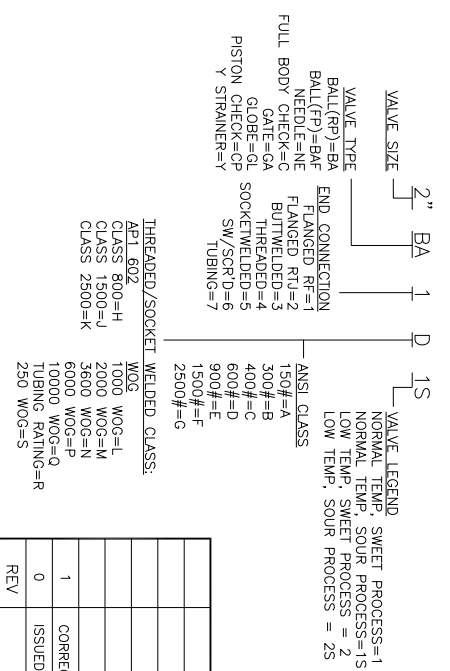
TAG	QTY	MAKE	DESCRIPTION
PSV-100	1	MERCER	PRESSURE SAFETY VALVE, MODEL 9100, 2" NPT INLET x 2" NPT OUTLET, SOUR PRESSURE SERVICE TRIM, WCB BODY, SET @ 1440psig, 'D' ORIFICE
PSV-200	1	MERCER	PRESSURE SAFETY VALVE, MODEL 9100, 1" NPT INLET x 1" NPT OUTLET, SOUR PRESSURE SERVICE TRIM, WCB BODY, SET @ 250psig, 'D' ORIFICE
PSV-300	1	SWAGelok	PRESSURE SAFETY VALVE, SS4R-3A5, 1/2" TUBING INLET x 1/2" TUBING OUTLET, 316SS BODY, SET @ 1440psig, MOUNTED ON METHANOL PUMP
PCV-200	1	FISHER	627 PRESSURE REDUCING REGULATOR, 1" FNPT, WCB STEEL BODY, SST TRIM, ALUMINUM SPRING CASE, 70-150psig S.R., 3/32" ORIFICE, 2000psig MAX INLET
PRV-201	2	FISHER	67CR-362SC INSTRUMENT GAS REGULATOR, 1/2" NPT, TAPPED-BONNET, SOUR TRIM, 0 TO 35psig SPRING RANGE, 250psig MAWP, VENTED BONNET
LCV-100	1	NORRISSEAL	2200 MOTOR VALVE, 2" FNPT, 390222B087, SOUR SERVICE, 1" SST QUICK OPEN TRIM c/w SIZE 9 ATO/FC ACTUATOR
LC-100	1	FISHER	L2 LOW BLEED LEVEL CONTROLLER, 2" NPT CONNECTION, STD. NACE SERVICE, DIRECT SNAP ACTING, 35psi SUPPLY, PNEUMATIC, 1 1/2" x 12" PVC DISPLACER
FE-100	1	DANIEL	2" 600# SCH. 80 SENIOR METER RUN, SOUR PROCESS TRIM, 48" OAL, FLOW CONDITIONER, BUILT TO AGA 2000, ONE - 1" 3000# TOL & ONE 3/4" 3000# TOL DOWNSTREAM, (REMANUFACTURED)
FRC-100	1	BARTON (REMAN.)	ITR MODEL 202E, 2 PEN FLOW CHART RECORDER, 0 TO 100" W.C. DIFFERENTIAL PRESSURE RANGE, 0 TO 1500psig STATIC ELEMENT, SOUR PROCESS, c/w 5 VALVE SST. MANIFOLD
PI-100	1	WESTERN GAUGE (WGI)	ELITE PRESSURE GAUGE, SSUF, 1/2" NPT BTM x 4" FACE, 0-1500psig RANGE, DUAL SCALE, MOUNTED ON INLET VESSEL, SOUR SERVICE
PI-200	1	WESTERN GAUGE (WGI)	ELITE PRESSURE GAUGE, SSUF, 1/2" NPT BTM x 2 1/2" FACE, 0-200psig RANGE, DUAL SCALE, MOUNTED ON FUEL GAS SCRUBBER, SOUR SERVICE
TI-100	1	WESTERN GAUGE (WGI)	MASTER TEMP. TEMPERATURE INDICATOR, 1/2" BCM x 3" FACE x 6" STEM, -40 TO 160°F TEMP. RANGE, DUAL SCALE, MOUNTED ON INLET VESSEL, c/w 1/2" FNPT x 3/4" MNPT x 6" "U" DIMENSION LENGTH, 316SS/THERMOWELL
LG-100	1	QUALITY	LEVEL GAUGE, Q15R20 RELEX SIGHT GLASS, MAWP: 2500psig @ 100°F, MOUNTED IN LIQUID/GAS INTERFACE, 7/8" VISIBLE GLASS
LG-300	1	PLAINSMAN	TANK LEVEL GAUGE, P5700-52-48-CTM, MAWP: 140psig, 1/2" NPT CONNECTIONS, 4'-0" LONG, METRIC HEIGHT/RATE.
BPCV-100	1	ALTEK	SEE GLOBE VALVE IN VALVE LIST

- GENERAL NOTES:
 1. QUANTITIES IN B.O.M. ARE FOR (1) UNIT.
 2. ALL PIPING TO BE IN ACCORDANCE WITH THE LATEST EDITION OF ASME B31.3 PRESSURE PIPING CODE.
 3. VESSEL TO BE FABRICATED TO THE LATEST EDITION OF ASME SECTION VIII, DIVISION 1 PRESSURE VESSELS.
 4. SPEC 'C1' THREADED PIPING: 1/2"-1 1/2" = SCH XXX
 2" = SCH 160 (min)
 1/2"-1 1/2" = SCH 160 (min)
 2" = SCH 160 (min)
 SPEC 'C1' WELDED PIPING: 3"-24" = SCH 80 (min)
 3"-24" = SCH 80 (min)
 5. ALL FORGED STEEL FITTINGS TO BE: SA-105N, 6000# (min) RATING.
 ALL WELDED FITTINGS TO BE: SA-234-WPB NORMALIZED
 1/4"-3/8" = 0.035" (min) ASTM A269 TP316/316L SMLS, FULLY ANNEALED
 1/2" = 0.049" (min) ASTM A269 TP316/316L SMLS, FULLY ANNEALED
 6. TUBING SPEC: ALL TUBING FITTINGS: ASTM A182 F316/316L SWAGELOK
 ALL TUBING FITTINGS: ASTM A182 F316/316L SWAGELOK
 7. PAINTING SPEC: PACKAGE TO BE CLEANED TO 'SSPC-SP-2' HAND TOOL CLEAN
 1st COAT PRIMER: ONE (1) COAT OF CLOVERDALE FAST DRY PRIMER, FINISH COAT: ONE (1) COAT OF CLOVERDALE GREY ENAMEL, SKID FLOOR: ONE (1) COAT OF CLOVERDALE GREY ENAMEL.
 8. PROTECT ALL OPENINGS FOR SHIPMENT.
 9. BOLTING TO BE SA-193-B7M STUDS w/ SA-194-2HM NUTS c/w 316SS FLEXITALLIC GASKET.
 10. BUILDING SIZE: 8'-0" WIDE x 10'-0" LG.
 BUILDING TYPE: FOAM PANEL BUILDING
 ROOF TYPE: SHED
 WALL HEIGHTS: 8'-3" LOW EAVE TO 8'-9" HIGH EAVE
 EXTERIOR: 28 GA. ASTM A792 G-33 STEEL TO 1.5" POLYURETHANE FOAM INJECTED PANEL (R12)
 GALVALUME EXTERIOR / WHITE INTERIOR
 DOORS: ONE (1) 3'-0" x 7'-0" MAIN DOOR c/w PANIC HARDWARE/CHECK CHAIN, WEATHER STRIPPING, 24"x24" WIG WINDOW
 WINDOWS: ONE (1) 36" x 36" DOUBLE GLAZED SLIDING WINDOW w/ SCREEN, VENTILATION: TWO (2) 12" x 12" Sq. ADJUSTABLE LOUVERS
 11. PACKAGE IS HYDRO TESTED @ 1.5 TIMES MAWP FOR 1/2 HOUR AT ROOM TEMPERATURE
 12. PUMP INSTALLED ON PUMP TABLE
 13. INSTRUMENTS TO BE VENTED OFF SKID
 14. 2" POLYURETHANE SPRAY FOAM ON UNDERSIDE OF SKID

VALVE LIST

VALVE NUMBER	QTY.	MANUFACTURER	DESCRIPTION
2"GL1D1S	1	ALTEK	2" 600# RF DHV C230F3 GLOBE VALVE, NACE
2"BAF1D1S	2	ALTEK	2" 600# RF DHV B1600F12 FP BALL VALVE, NACE
2"BA4M1S	3	ALTEK	2" 2000# RP DHV B820X131 BALL VALVE, NACE
1"BA4M1S	2	ALTEK	1" 2000# RP DHV B820X131 BALL VALVE, NACE
3/4"BA4M1S	2	ALTEK	3/4" 2000# RP DHV B820X131 BV, NACE
1/2"BAF4M1S	2	ALTEK	1/2" 2000# FP DHV B820X131 BV, NACE
1/2"BA4M1S	5	ALTEK	1/2" 2000# RP DHV B820X131 BV, NACE
1/4"BA4M1S	7	ALTEK	1/4" 2000# RP DHV B820X131 BV, NACE
1/2"C4N1S	1	PLAINSMAN	1/2" NPT 3000# SS INLINE CHECK VALVE
1/4"C4N1S	1	PLAINSMAN	1/4" NPT 3000# SS INLINE CHECK VALVE

VALVE LEGEND



REV	DESCRIPTION	BY	APPR	d/m/y
0	ISSUED FOR CONSTRUCTION	MEW		07/03/14
1	CORRECTED PAID / BOM	MEW		13/03/14
	REVISION			

DATE: 29/01/14
 DESIGNED BY: M.E.W.
 DRAWN BY: M.E.W.
 CHECKED BY: M.E.W.
 APPROVED BY: J.H.
 SCALE: N.T.S.

QUANT: PLATINUM ENERGY SERVICES ULC
 LSD:
 TITLE: BILL OF MATERIALS - FLOW DIAGRAM
 24"x7'-6" S/S 1440psi - 2 PHASE VERT. AB SOUR SERVICE SEPARATOR PACKAGE

JOB # EV-14045
 SHEET NO. 2 OF 2
 REF. NO. PNID
 DRAWING NO. EV-14045-F-002
 DRAWING: PNID-BOM
 REV. NO. 0