

V-100

VERTICAL 3 PHASE TEST SEPARATOR

SIZE: 24" O.D. x 7'-6" S/S
 MAWP: 1440psi @ 130°F
 MDMT: -20°F @ 1440psi
 CRN FOR ALBERTA, SASK & BC
 INLET DEFLECTOR PLATE, 6" THK. 9lb/ft³ MISTEX
 RADIOGRAPHY: RT-2
 C.A.: 1/8"
 PWHT
 A - STAMPED
 DWG NO.: 4088-6 Rev2

V-200

FUEL GAS SCRUBBER

SIZE: 6" x 30" S/S
 MAWP: 285psi @ 100°F
 MDMT: -20°F @ 285psi
 C.A.: 1/8"
 c/w H/SD-200
 ASME SECTION VIII, DIV 1
 2010 EDITION

H-400

NATURAL GAS HEATER

MAKE: CATADYNE - 12x24WX
 SIZE: 12" x 24" 10,000BTU/HR
 12 VDC START, CSA APPROVED,
 7"wc NATURAL GAS THERMOCOUPLE,
 MERTIK SSOV, AC-R-912 REG
 ASSEMBLED GAS TRAIN, 30' CABLES,
 HOOD VENT, PROTECTION GRILL

P-300

CHEMICAL INJECTION PUMP

MAKE: BRUN INSTRUMENTS
 MODEL: BR5103JP-1111
 16.8 GPD MAX
 3000psi MAX DISCHARGE PRESSURE
 10-35psi SUPPLY PRESSURE
 DUCTILE IRON FLUID END ASSEMBLY
 Buna Packing & O-RINGS
 SOUR SUPPLY GAS TRIM
 3/8" SST PLUNGER & TRIM
 1" NPT SUCTION, DISCHARGE
 & INSTRUMENT SUPPLY

BILL OF MATERIALS

TAG	QTY	MAKE	DESCRIPTION
PSV-100	1	MERCER	PRESSURE SAFETY VALVE, MODEL 9100, 2" NPT INLET x 2" NPT OUTLET, SOUR PRESSURE SERVICE TRIM, WCB BODY, SET @ 1440psig, 'D' ORIFICE
PSV-200	1	MERCER	PRESSURE SAFETY VALVE, MODEL 9100, 1" NPT INLET x 1" NPT OUTLET, SOUR PRESSURE SERVICE TRIM, WCB BODY, SET @ 250psig, 'D' ORIFICE
PSV-300	1	SWAGelok	PRESSURE SAFETY VALVE, SS4R-3A5, 1/2" TUBING INLET x 1/2" TUBING OUTLET, 316SS BODY, SET @ 1440psig, MOUNTED ON METHANOL PUMP
PCV-200	1	FISHER	627 PRESSURE REDUCING REGULATOR, 1" FNPT, WCB STEEL BODY, SST TRIM, ALUMINUM SPRING CASE, 70-150psig S.R., 3/32" ORIFICE, 2000psig MAX INLET
PRV-201	2	FISHER	67CR-362SC INSTRUMENT GAS REGULATOR, 1/2" NPT, TAPPED-BONNET, SOUR TRIM, 0 TO 35psig SPRING RANGE, 250psig MAWP, VENTED BONNET
LCV-100	1	NORRISSEAL	2200 MOTOR VALVE, 2" FNPT, 390222B087, SOUR SERVICE, 1" SST QUICK OPEN TRIM c/w SIZE 9 ATO/FC ACTUATOR
LC-100	1	FISHER	L2 LOW BLEED LEVEL CONTROLLER, 2" NPT CONNECTION, STD. NACE SERVICE, DIRECT SNAP ACTING, 35psi SUPPLY, PNEUMATIC, 1 1/2" x 12" PVC DISPLACER
FE-100	1	DANIEL	2" 600# SCH. 80 JUNIOR METER RUN, SOUR PROCESS TRIM, 48" OAL, FLOW CONDITIONER, BUILT TO AGA 2000, ONE - 1" 3000# TOL & ONE 3/4" 3000# TOL DOWNSTREAM, (REMANUFACTURED)
FRC-100	1	BARTON (REMAN.)	ITR MODEL 202E, 2 PEN FLOW CHART RECORDER, 0 TO 100" W.C. DIFFERENTIAL PRESSURE RANGE, 0 TO 1500psig STATIC ELEMENT, SOUR PROCESS, c/w 5 VALVE SST. MANIFOLD
PI-100	1	WESTERN GAUGE (WGI)	ELITE PRESSURE GAUGE, SSUF, 1/2" NPT BTM x 4" FACE, 0-1500psig RANGE, DUAL SCALE, MOUNTED ON INLET VESSEL, SOUR SERVICE
PI-200	1	WESTERN GAUGE (WGI)	ELITE PRESSURE GAUGE, SSUF, 1/2" NPT BTM x 2 1/2" FACE, 0-200psig RANGE, DUAL SCALE, MOUNTED ON FUEL GAS SCRUBBER, SOUR SERVICE
TI-100	1	WESTERN GAUGE (WGI)	MASTER TEMP. TEMPERATURE INDICATOR, 1/2" BCM x 3" FACE x 6" STEM, -40 TO 160°F TEMP. RANGE, DUAL SCALE, MOUNTED ON INLET VESSEL, c/w 1/2" FNPT x 3/4" MNPT x 6" "U" DIMENSION LENGTH, 316SS/THERMOWELL
LG-100	1	QUALITY	LEVEL GAUGE, Q15R20 RELEX SIGHT GLASS, MAWP: 2500psig @ 100°F, MOUNTED IN LIQUID/GAS INTERFACE, 7 7/8" VISIBLE GLASS
LG-300	1	PLAINSMAN	TANK LEVEL GAUGE, P5700-52-48-CTM, MAWP: 140psig, 1/2" NPT CONNECTIONS, 4'-0" LONG, METRIC HEIGHT/RATE.
BPCV-100	1	ALTEK	SEE GLOBE VALVE IN VALVE LIST

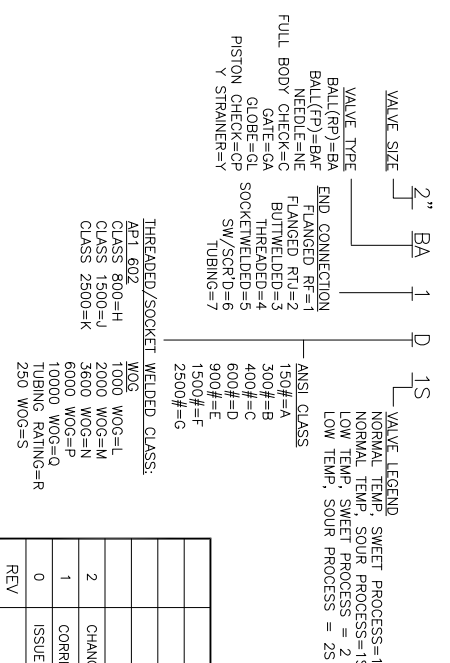


- GENERAL NOTES:
- QUANTITIES IN B.O.M. ARE FOR (1) UNIT.
 - ALL PIPING TO BE IN ACCORDANCE WITH THE LATEST EDITION OF ASME B31.3 PRESSURE PIPING CODE.
 - VESSEL TO BE FABRICATED TO THE LATEST EDITION OF ASME SECTION VIII, DIVISION 1 PRESSURE VESSELS.
 - SPEC 'C1' THREADED PIPING: 1/2"-1 1/2" = SCH XXX
 2" = SCH 160 (min)
 1/2"-1 1/2" = SCH 160 (min)
 2" = SCH 160 (min)
 SPEC 'C1' WELDED PIPING: 3"-24" = SCH 80 (min)
 3"-24" = SCH 80 (min)
 - ALL FORGED STEEL FITTINGS TO BE: SA-105N, 6000# (min) RATING.
 - ALL WELDED FITTINGS TO BE: SA-234-WPB NORMALIZED
 1/2"-3/8" = 0.035" (min) ASTM A269 TP316/316L SMLS, FULLY ANNEALED
 3/8"-1/2" = 0.049" (min) ASTM A269 TP316/316L SMLS, FULLY ANNEALED
 - ALL TUBING FITTINGS: ASTM A182 F316/316L SWAGELOK
 - PAINTING SPEC:
 PACKAGE TO BE CLEANED TO 'SSPC-SP-2' HAND TOOL CLEAN
 1st COAT PRIMER: ONE (1) COAT OF CLOVERDALE FAST DRY PRIMER,
 FINISH COAT: ONE (1) COAT OF CLOVERDALE GREY ENAMEL,
 SKID FLOOR: ONE (1) COAT OF CLOVERDALE GREY ENAMEL.
 - PROTECT ALL OPENINGS FOR SHIPMENT.
 - BOLTING TO BE SA-193-B7M STUDS w/ SA-194-2HM NUTS c/w 316SS FLEXITALLIC GASKET.
 - BUILDING SIZE: 8'-0" WIDE x 10'-0" LG.
 - BUILDING TYPE: FOAM PANEL BUILDING
 - ROOF TYPE: SHED
 - WALL HEIGHTS: 8'-3" LOW EAVE TO 8'-9" HIGH EAVE
 28 GA. ASTM A792 G-33 STEEL TO 1.5" POLYURETHANE FOAM INJECTED PANEL (R12)
 EXTERIOR: GALVALUME EXTERIOR / WHITE INTERIOR
 - DOORS:
 ONE (1) 3'-0" x 7'-0" MAIN DOOR c/w PANIC HARDWARE/CHECK CHAIN,
 WEATHER STRIPPING, 24"x24" WIG WINDOW
 - WINDOWS:
 ONE (1) 36" x 36" DOUBLE GLAZED SLIDING WINDOW w/ SCREEN,
 VENTILATION: TWO (2) 12" x 12" Sq. ADJUSTABLE LOUVERS
 - PACKAGE IS HYDRO TESTED @ 1.5 TIMES MAWP FOR 1/2 HOUR AT ROOM TEMPERATURE
 - PUMP INSTALLED ON PUMP TABLE
 - INSTRUMENTS TO BE VENTED OFF SKID
 - 2" POLYURETHANE SPRAY FOAM ON UNDERSIDE OF SKID

VALVE LIST

VALVE NUMBER	QTY.	MANUFACTURER	DESCRIPTION
2"GL1D1S	1	ALTEK	2" 600# RF DHV C230F3 GLOBE VALVE, NACE
2"BAF1D1S	2	ALTEK	2" 600# RF DHV B1600F12 FP BALL VALVE, NACE
2"BA4M1S	3	ALTEK	2" 2000# RP DHV B820X131 BALL VALVE, NACE
1"BA4M1S	2	ALTEK	1" 2000# RP DHV B820X131 BALL VALVE, NACE
3/4"BA4M1S	2	ALTEK	3/4" 2000# RP DHV B820X131 BV, NACE
1/2"BAF4M1S	2	ALTEK	1/2" 2000# FP DHV B820X131 BV, NACE
1/2"BA4M1S	5	ALTEK	1/2" 2000# RP DHV B820X131 BV, NACE
1/4"BA4M1S	7	ALTEK	1/4" 2000# RP DHV B820X131 BV, NACE
1/2"C4N1S	1	PLAINSMAN	1/2" NPT 3000# SS INLINE CHECK VALVE
1/4"C4N1S	1	PLAINSMAN	1/4" NPT 3000# SS INLINE CHECK VALVE

VALVE LEGEND



REV	REVISION	BY	APPR	d/m/y
0	ISSUED FOR CONSTRUCTION	MEW		07/03/14
1	CORRECTED PAID / BOM	MEW		13/03/14
2	CHANGED SENIOR METER RUN TO JUNIOR METER RUN	EVG		15/04/14

DATE: 29/01/14
 DESIGNED BY: M.E.W.
 DRAWN BY: M.E.W.
 CHECKED BY: M.E.W.
 APPROVED BY: J.H.
 SCALE: N.T.S.

QUANT: PLATINUM ENERGY SERVICES ULC
 LSD:
 TITLE: BILL OF MATERIALS - FLOW DIAGRAM
 JOB #: EV-14045
 REF. NO.: PNID
 DRAWING NO.: EV-14045-F-002
 SHEET NO.: 2 OF 2
 REV. NO.: 2