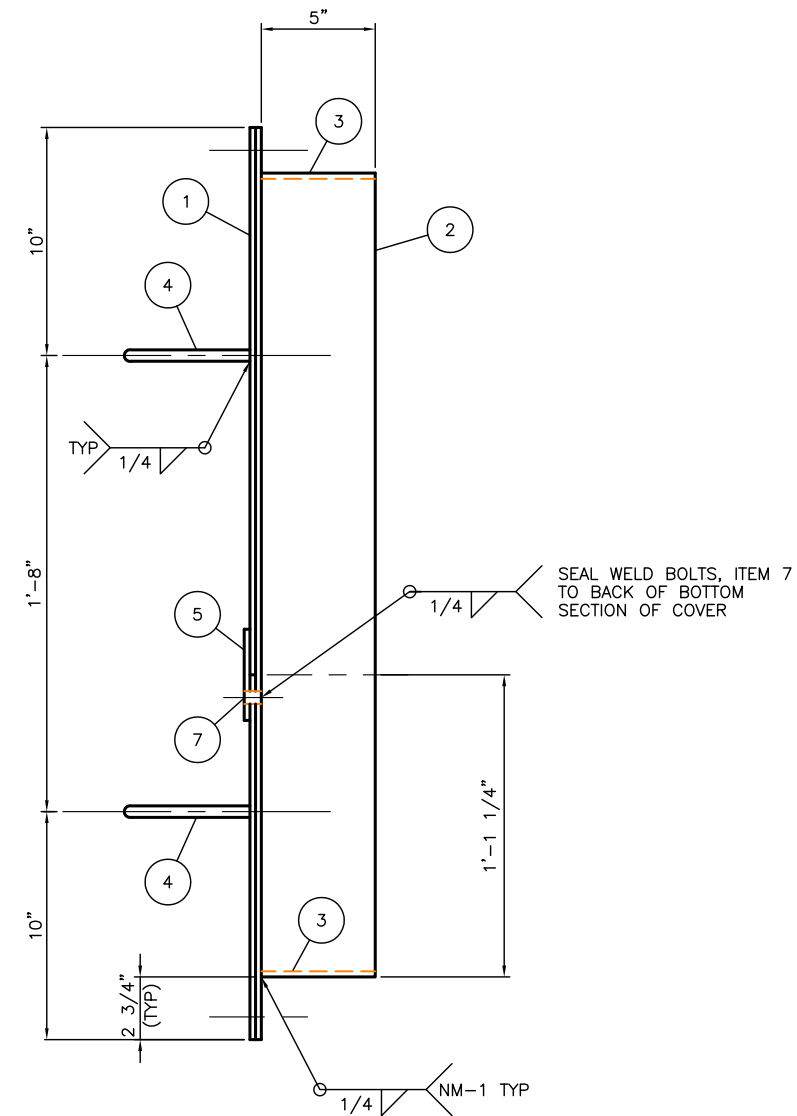
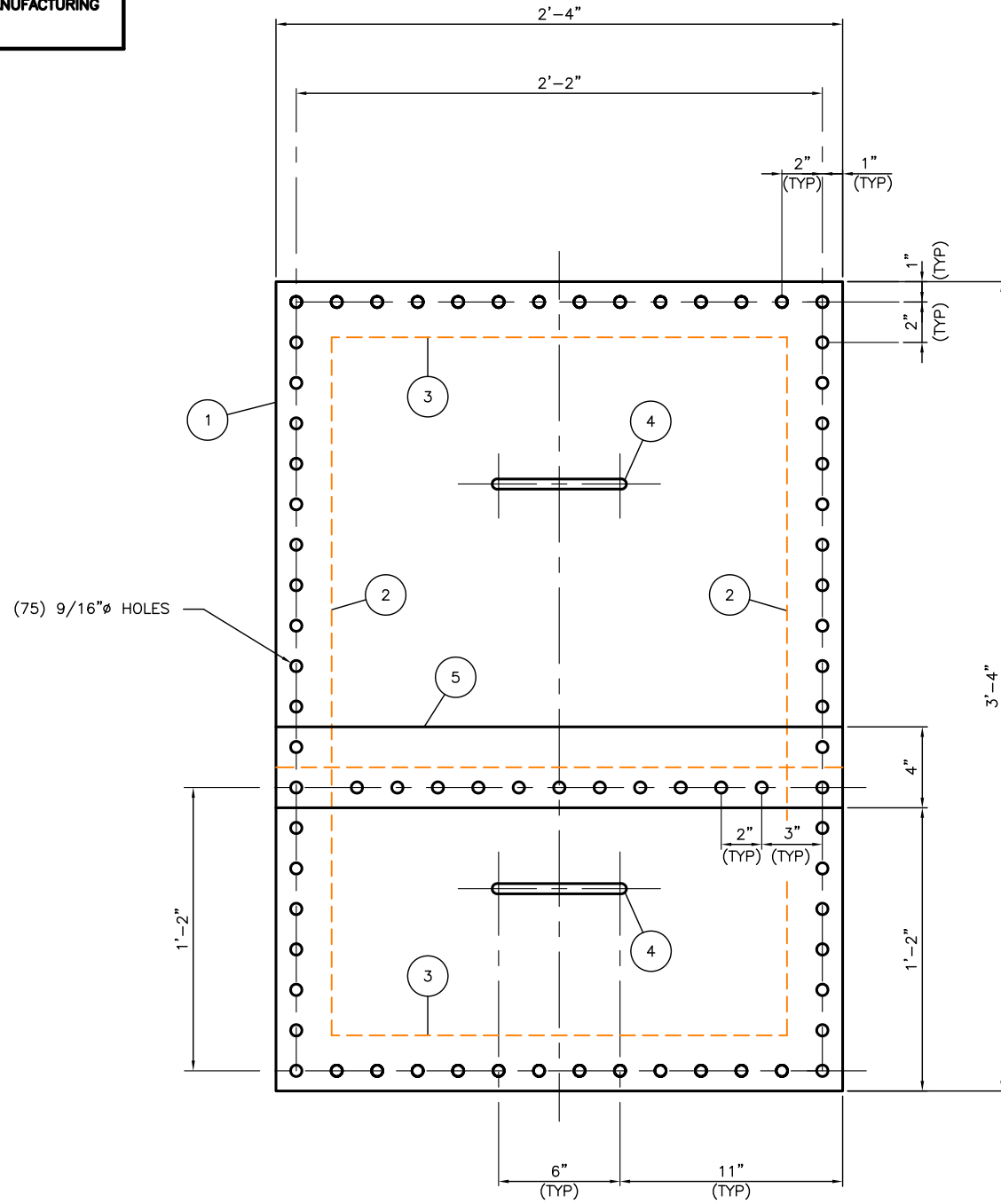


THIS DRAWING IS THE PROPERTY OF NUSCO MANUFACTURING & SUPPLY LTD. AND IS LENT TO THE RECIPIENT FOR THEIR CONFIDENTIAL USE ONLY. IN CONSIDERATION OF THE LOAN OF THIS DRAWING, THE RECIPIENT AGREES THAT IT SHALL NOT BE USED IN ANY WAY DETRIMENTAL TO THE INTERESTS OF NUSCO MANUFACTURING & SUPPLY LTD. THAT IT SHALL BE RETURNED UPON REQUEST AND THAT IT SHALL NOT BE REPRODUCED, COPIED, LENT OR OTHERWISE DISPOSED OF DIRECTLY OR INDIRECTLY WITHOUT THE WRITTEN PERMISSION OF NUSCO MANUFACTURING & SUPPLY LTD.

MATERIAL LIST

ITEM	QTY	PART	DESCRIPTION	MATERIAL
1	1	COVER PLATE	2'-4" x 1/4" PL x 3'-4" LG	A-36
2	2	ANGLE	2 3/4" x 5" x 1/4" ANGLE x 3'-4" LG (SHOP FAB.)	A-36
3	2	ANGLE	2 3/4" x 5" x 1/4" ANGLE x 1'-11 1/2" LG (SHOP FAB.)	A-36
4	2	HANDLE	STD MANWAY HANDLE (DWG. HD-000-C)	
5	1	SUPPORT	4" x 1/4" FB x 2'-4" LG	A-36
6				
7	11	BOLTING	1/2"φ x 1 1/2" LG CAPSCREW c/w (1) NUT EA.	CAD-PLATED
8				
9				
10				

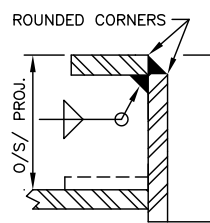


NOTES:

- 1) APPROX. WEIGHT 160 LBS.
- 2) FOR ATTACHMENTS WELDS USE NM-1 OR 7 WITH A 3/16" FILLET WELD UNLESS OTHERWISE NOTED.

1 NM-1 OR NPS-6

PLATE FLANGES TO PIPE WELDS



				NUSCO SUPPLY & MANUFACTURING INC.			
				CUSTOMER HUSKY OIL OPERATIONS c/o BDR ENGINEERING LTD.			
				TITLE STD 24" x 36" SPLIT CLEANOUT (REDUCED OPENING) TAG: T-710			
				LOCATION SPRING CREEK COMPRESSOR STATION		QUOTATION FILE No. T0322-03Q01	
0	03/10/31	DB		ISSUED FOR CONSTRUCTION			
REV	DATE	REV BY	APP'D BY	DESCRIPTION	APPR:	SCALE	W.O. NO.
						3"=1'-0"	007182-20
				DATE: 96/10/31		DRWG. NO. T2199-801	
						REV 0	