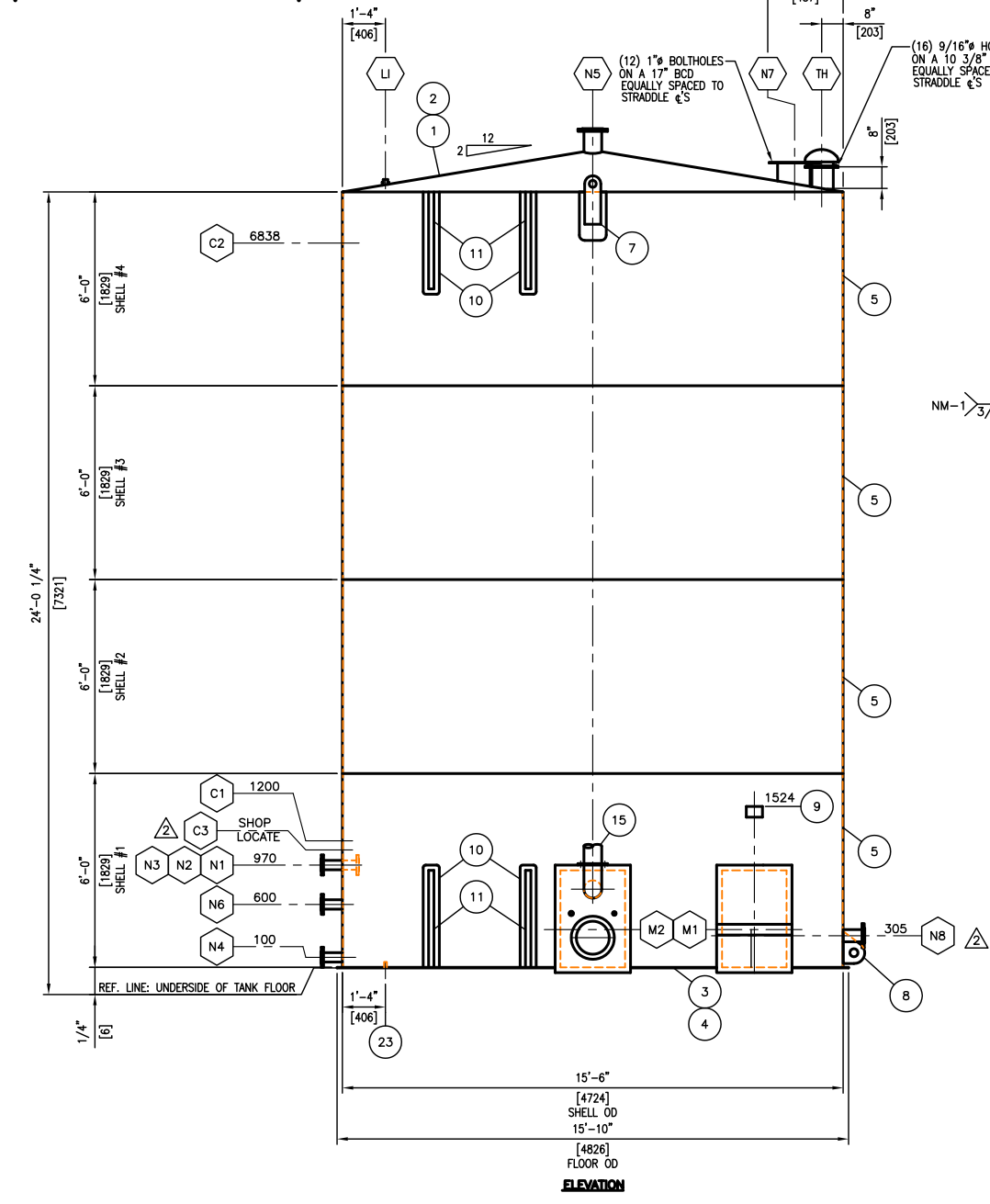


THIS DRAWING IS THE PROPERTY OF NUSCO MANUFACTURING & SUPPLY LTD. AND IS LENT TO THE RECIPIENT FOR THEIR CONFIDENTIAL USE ONLY. IN CONSIDERATION OF THE LOAN OF THIS DRAWING, THE RECIPIENT AGREES THAT IT SHALL NOT BE USED IN ANY WAY DETRIMENTAL TO THE INTERESTS OF NUSCO MANUFACTURING & SUPPLY LTD. THAT IT SHALL BE RETURNED UPON REQUEST AND THAT IT SHALL NOT BE REPRODUCED, COPIED, LENT OR OTHERWISE DISPOSED OF DIRECTLY OR INDIRECTLY WITHOUT THE WRITTEN PERMISSION OF NUSCO MANUFACTURING & SUPPLY LTD.

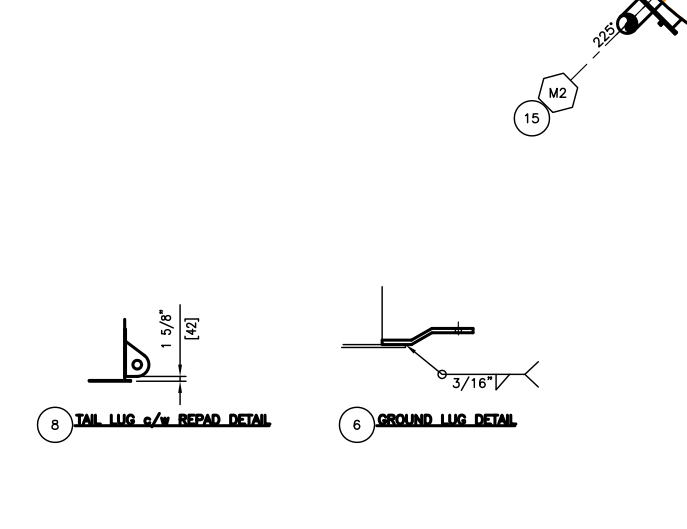
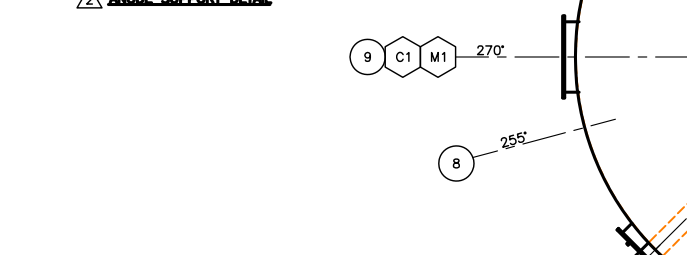
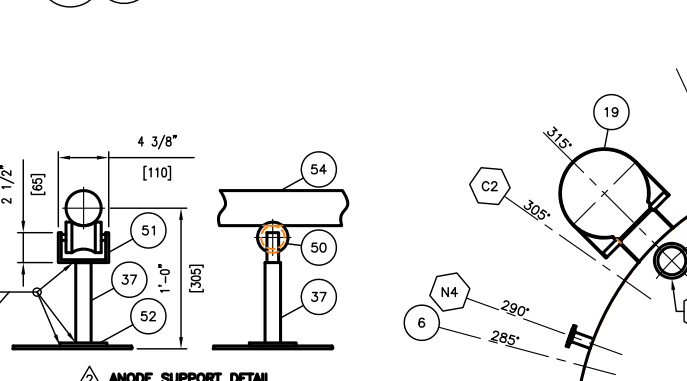
**LAYOUT ORIENTATION TABLE**

360°	=	14,826	225°	=	9266
1°	=	41,183	255°	=	10,502
45°	=	1853	270°	=	11,119
75°	=	3089	285°	=	11,737
90°	=	3707	290°	=	11,943
135°	=	5560	305°	=	12,561
165°	=	6795	315°	=	12,973
180°	=	7413	335°	=	13,796
200°	=	8237	345°	=	14,208



**MATERIAL LIST**

ITEM	QTY.	PART	DESCRIPTION	MATERIAL
36	2	PIPE	3" SCH STD SMLS PIPE x 9" LG	A-106B
37	1	PIPE	1" SCH STD SMLS PIPE x 6 7/8" LG (SHOP CHECK)	A-106B
38	1	INTERNAL	3" KENILWORTH SKIM TO BE ORDERED BY NUSCO & SUPPLIED BY OTHERS	SHIP LOOSE
39	1	GASKET	8"ø x 1/8" THK STD THIEF HATCH GASKET	NEOPRENE
40	1	GASKET	1 3/4" x 1/8" THK x 14"-0" LG STD MANWAY GASKET	NEOPRENE
41	1	GASKET	1 3/4" x 1/8" THK x 12"-0" LG STD MANWAY GASKET	NEOPRENE
42	9	GASKET	FILLET RUBBER x 3" LG	NEOPRENE
43	1	GASKET	3" 150# RF x 1/8" THK FLEXITALLIC GASKET	304 SS
44	1	GASKET	19" OD x 1/4" THK x 12 3/4" ID c/w (12) 1"ø BOLTHOLES ON A 17" BCD	NEOPRENE
45	144	BOLTING	1/2"ø x 1 1/2" LG UNC HEX CAPSCREWS c/w (1) NUT	CAD. PLATED
46	4	BOLTING	5/8"ø x 3 1/2" LG STUDS c/w (2) NUTS, (2) NYLON & (2) S.S. WASHERS EACH	304 SS NYLON
48	12	BOLTING	7/8"ø x 2 1/4" LG UNC HEX CAPSCREWS c/w (1) NUTS	CAD. PLATED
49	8	BOLTING	5/8"ø x 3 1/2" LG STUDS c/w (2) NUTS EACH	A-193-B7M A-194-2HM
50	1	ROLLER	2 1/2"ø x 3" LG	WOOD
51	1	BRACKET	1/4" THK. x 1" x 9 1/2" LG	A-36
52	1	REPAD	4"ø x 1/4" THK	A-36
53	1	EPRV	12" MODEL 2000 EPRV 8oz PRESS.	SHIP LOOSE
54	1	ANODE	4" 150# RF MOUNTING FLANGE c/w (2) EXTENSIONS, 3" OD x 22" LG.	A-105N
55	1	GASKET	4" 150# RF x 1/8" THK FLEXITALLIC GASKET	316 SS
56	1	PIPE	4" SCH STD SMLS PIPE x 9" LG	A-106B
57	1	BURNER CONTROL	NAGY FGI-100	SHIP LOOSE



**NOZZLE SCHEDULE**

TAG	SIZE	RATING	TYPE		SERVICE	NOZZLE BORE	REPAD	PROJECTION		WELD DETAIL	WELD SIZE				ITEM NUMBER
			EXTERNAL	INTERNAL				1/5"	0/5"		A	B	C	D	
N1	3"	150#	RFSO	FFSO	INLET	SCH STD	N/A	6"	8"	V, VII	3/16"	3/16"			29,30,35
N2	3"	150#	RFSO	FFSO	OUTLET (WATER)	SCH STD	N/A	6"	8"	V, VII	3/16"	3/16"			29,30,34
N3	3"	150#	RFSO	FFSO	OUTLET (SKIM)	SCH STD	N/A	6"	8"	V, VII	3/16"	3/16"			29,34,38,43,46,49,50,51
N4	3"	150#	RFSO	-	DRAIN	SCH STD	N/A	-	8"	V, VII	3/16"	3/16"			29,36
N5	6"	150#	RFSO	-	VENT	SCH STD	N/A	-	8"	V, VII	3/16"	3/16"			28,33
N6	3"	150#	RFSO	-	L.T. (FUTURE)	SCH STD	N/A	-	8"	V, VII	3/16"	3/16"			29,36
N7	12"	N/A	FAB.	-	EPRV	SCH STD	N/A	-	8"	V, IX	3/16"	3/16"			26,32,44,48,53
N8	4"	150#	RFSO	-	ANODE	SCH STD	N/A	-	8"	V, VII	3/16"	3/16"			27,49,54,55,56
C1	3/4"	3000#	CPLG	-	TI	N/A	N/A	-	-	VIII	3/16"	3/16"			24
C2	2"	3000#	CPLG	-	LSH	N/A	N/A	-	-	VIII	3/16"	3/16"			25
C3	1/2"	3000#	CPLG	-	GREASE LINE (SKIMMER)	N/A	N/A	-	-	VIII	3/16"	3/16"			31
M1	24"x36"	N/A	12F	-	CLEANOUT c/w SPLIT COVER	N/A	N/A	-	4"	V, VII	3/16"	3/16"			14,40,42,45
M2	24"x36"	N/A	12F	-	CLEANOUT c/w FIRETUBE	N/A	N/A	-	4"	V, VII	3/16"	3/16"			13,15,41,42,45
L1	1 1/2"	3000#	CPLG	N/A	LEVEL INDICATOR	N/A	N/A	-	2 1/2" MIN	VIII	3/16"	3/16"			20,22
L2	1 1/4"	-	PIPE	N/A	LEVEL INDICATOR SUPPORT	SCH XH	N/A	-	2 1/2" MIN	VIII	3/16"	3/16"			21,23
TH	8"	N/A	FAB.	N/A	THIEF HATCH c/w EXTENSION	SCH STD	N/A	-	SHOWN	V	3/16"	3/16"			17,18,39,45

**DESIGN DATA**

**BUILT ACCORDING TO API-12F (MODIFIED) CONSTRUCTION STANDARDS**

750 BBL, 15'-6" DIA. x 24'-0" HIGH DOUBLE WELDED BUTT JOINT STEEL STORAGE TANK

DESIGN PRESSURE: 8oz PRESS./-0.4ozVAC. FLOOR: 1/4" THK ASTM A-36

SHIPPING WEIGHT: 15,600 LBS. ROOF: 3/16" THK ASTM A-36

AIR TEST: 1.0 PSIG (NO HYDRO TEST) SHELL: 3/16" THK ASTM A-36

SERVICE: SWEET SHELL DIAMETER: 186"

CORROSION ALLOWANCE: NONE ROOF CUT DIAMETER: 188.5625"

LABELLED/REGISTERED: NO FLOOR CUT DIAMETER: 190"

RADIOGRAPHY: N/A DESIGN TEMP.: +10°F

MAGNETIC PARTICLE TEST FLOOR TO SHELL JOINT (INSIDE & OUTSIDE)

VACUUM BOX TEST FLOOR PLATE WELDS

SURFACE PREP. - INTERNAL: INCLUDES EXTERNAL SURFACES ONLY OF INTERNAL PIPING

SANDBLAST PER SSPC-SP5 (SIL-7) (FLOOR & 4'-0" UP SHELL)

(10) TO (12) MILS OF DEVOE 253 (HOLIDAY FREE) ON FLR & 4'-0" UP SHL

INTERNAL COATING: SANDBLAST AS PER SSPC-SP7 TO SHELL & ROOF

SURFACE PREP. - EXTERNAL: SANDBLAST AS PER SSPC-SP7 TO SHELL & ROOF

EXTERNAL COATING: (1) COAT OF BAR-OX 752 PRIMER TO SHELL & ROOF

SANDBLAST AS PER SSPC-SP6 TO UNDERSIDE OF FLOOR

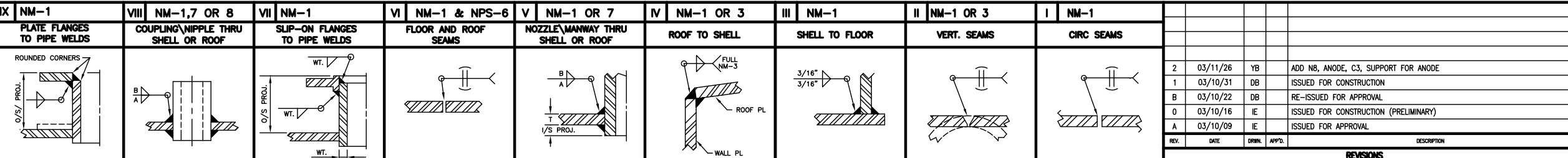
(12) TO (16) MILS OF COAL TAR EPOXY TO UNDERSIDE OF FLOOR

ALL PROTRUSIONS NOT COVERED WITH INSULATION, SHOULD HAVE RUSTOLEUM 906 OR EQUIVALENT

1 1/2" THK. URETHANE INSULATION (R10) c/w (2) COATS OF BLACK SURFACE SEALANT TO SHELL & ROOF

**MATERIAL LIST**

ITEM	QTY.	PART	DESCRIPTION	MATERIAL
1	1	ROOF	6'-0" x 3/16" THK PL x 15'-10" LG (TRIM TO SUIT ROOF)	A-36
2	2	ROOF	5'-0" x 3/16" THK PL x 14'-10" LG (TRIM TO SUIT ROOF)	A-36
3	1	FLOOR	6'-0" x 1/4" THK PL x 15'-10" LG (TRIM TO SUIT FLOOR)	A-36
4	2	FLOOR	5'-0" x 1/4" THK PL x 14'-10" LG (TRIM TO SUIT FLOOR)	A-36
5	4	SHELL	6'-0" x 3/16" THK PL x 48'-8" LG (ROLL TO 15'-6" OD)	A-36
6	1	GROUND LUG	STD GROUNDING LUG (DWG. CLIP-F)	
7	2	LIFT LUG	STD 750 BBL LIFTING LUG c/w REPAD (DWG. LG0750-A)	
8	1	TAIL LUG	STD TAILING LUG c/w REPAD (DWG. LG-TAL-B)	
9	1	NAME PLATE	STD NAME PLATE BRACKET (DWG. BRKT-D) c/w NAME PLATE	
10	4	REPAD	4" x 3/16" PL x 3'-2" LG	A-36
11	4	INSULATION BOOT	STD 3'-0" INSULATION BOOT (DWG. SS-TNK-D)	
12				
13	1	CLEANOUT	STD 24"x36" CLEANOUT (DWG. CL2436-E)	
14	1	CLEANOUT	STD 24"x36" CLEANOUT c/w SPLIT COVER (DWG. T2199-801)	
15	1	FIRETUBE	6"ø x 6'-0" LG FIRETUBE ASSEMBLY c/w GAS MANIFOLD (SEE DWG. T2199-001 & T2199-800)	
16				
17	1	THIEF HATCH	JT-8 THIEF HATCH (8oz Press./-0.4oz Vac.)	SWEET
18	1	EXTENSION	8" STD THIEF HATCH EXTENSION (DWG. TH-008-A)	
19	1	LADDER	STD 24'-0" HIGH LADDER c/w SAFETY CAGE (DWG. T2199-802)	
20	1	LEVEL INDICATOR	STD No.1 GAUGE BOARD c/w INDICATOR & FLOAT	SWEET
21	2	SUPPORT	1 1/4" SCH XH SMLS PIPE x 6" (TOE)	A-106B
22	1	COUPLING	1 1/2" 3000# FULL COUPLING	A-105N
23	2	ANCHOR	STD GAUGE BOARD ANCHOR (DWG. CLIP-D)	
24	1	COUPLING	3/4" 3000# FULL COUPLING	A-105N
25	1	COUPLING	2" 3000# FULL COUPLING	A-105N
26	1	FAB. FLANGE	19" OD x 1/4" THK x 12 3/4" ID c/w (12) 1"ø BOLTHOLES ON A 17" BCD, EQUALLY SPACED TO STRADDLE 335" ø	A-36
27	1	FLANGE	4" 150# RFSO FLANGE	A-105N
28	1	FLANGE	6" 150# RFSO FLANGE	A-105N
29	6	FLANGE	3" 150# RFSO FLANGE	A-105N
30	2	FLANGE	3" 150# FFSSO FLANGE	A-105N
31	1	COUPLING	1/2" 3000# FULL COUPLING x 4" LG	A-105N
32	1	PIPE	12" SCH STD SMLS PIPE x 11" LG	A-106B
33	1	PIPE	6" SCH STD SMLS PIPE x 10 1/2" LG	A-106B
34	2	PIPE	3" SCH STD SMLS PIPE x 1'-0 1/2" LG	A-106B
35	1	PIPE	3" SCH STD SMLS PIPE x 1'-2" LG	A-106B



**REVISIONS**

REV.	DATE	DRWN.	APPR.	DESCRIPTION
2	03/11/26	YB		ADD N8, ANODE, C3, SUPPORT FOR ANODE
1	03/10/31	DB		ISSUED FOR CONSTRUCTION
B	03/10/22	DB		RE-ISSUED FOR APPROVAL
0	03/10/16	IE		ISSUED FOR CONSTRUCTION (PRELIMINARY)
A	03/10/09	IE		ISSUED FOR APPROVAL

**NUSCO MANUFACTURING & SUPPLY LTD.**

CUSTOMER: HUSKY OIL OPERATIONS  
c/o BDR ENGINEERING LTD.

TITLE: 750 BBL SINGLE WALLED STORAGE TANK  
15'-6" DIA x 24'-0" HIGH

LOCATION: SPRING CREEK COMPRESSOR STATION

QUOTATION FILE NO.: T0322-03Q01

SCALE: 3/8"=1'-0"

DATE: 03/10/09

NO. 007182

DWG. No. T2199-900

Rev. 2