

THIS DRAWING IS THE PROPERTY OF NUSCO MANUFACTURING & SUPPLY LTD. AND IS LENT TO THE RECIPIENT FOR THEIR CONFIDENTIAL USE ONLY. IN CONSIDERATION OF THE LOAN OF THIS DRAWING, THE RECIPIENT AGREES THAT IT SHALL NOT BE USED IN ANY WAY DETRIMENTAL TO THE INTERESTS OF NUSCO MANUFACTURING & SUPPLY LTD. THAT IT SHALL BE RETURNED UPON REQUEST AND THAT IT SHALL NOT BE REPRODUCED, COPIED, LENT OR OTHERWISE DISPOSED OF DIRECTLY OR INDIRECTLY WITHOUT THE WRITTEN PERMISSION OF NUSCO MANUFACTURING & SUPPLY LTD.

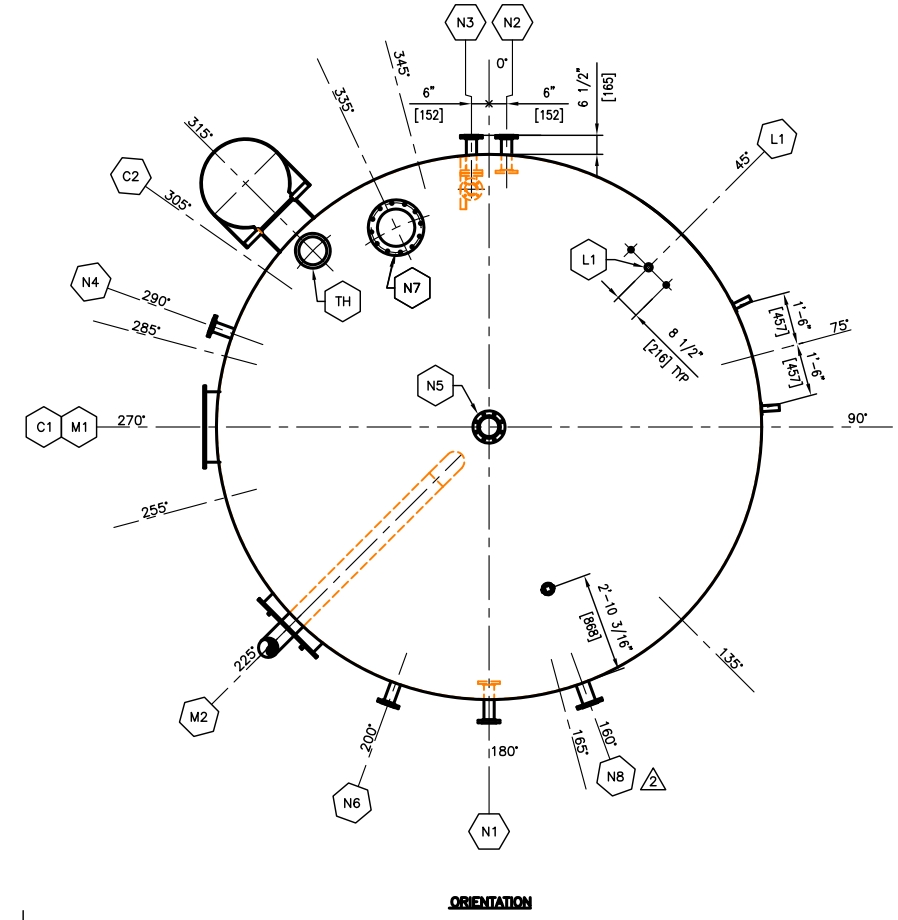
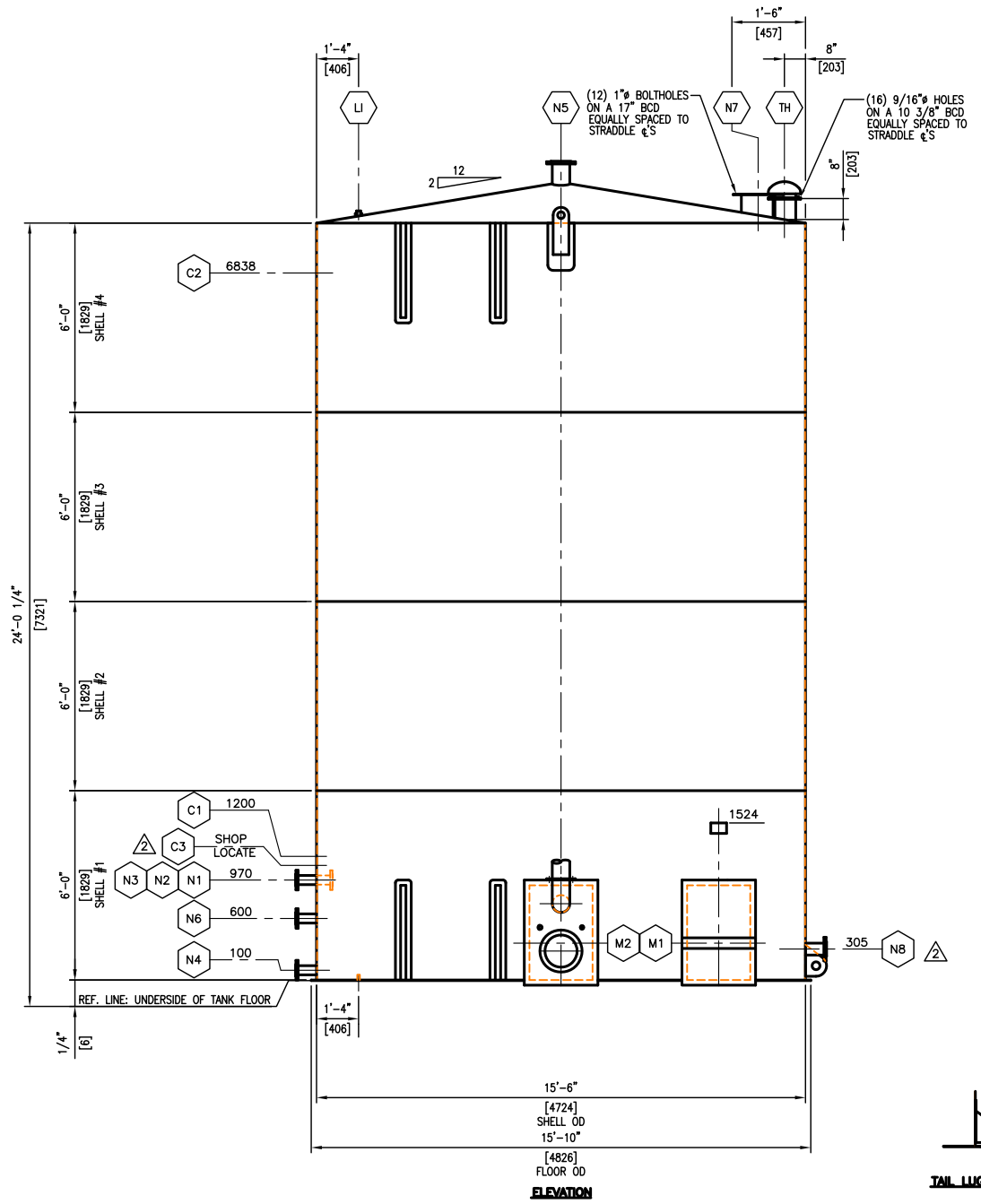
NOZZLE SCHEDULE

TAG	SIZE	RATING	TYPE		SERVICE	NOZZLE BORE	REPAD	PROJECTION	
			EXTERNAL	INTERNAL				I/S	O/S
N1	3"	150#	RFSO	FFSO	INLET	SCH STD	N/A	6"	8"
N2	3"	150#	RFSO	FFSO	OUTLET (WATER)	SCH STD	N/A	6"	SHOWN
N3	3"	150#	RFSO	RFSO	OUTLET (SKIM)	SCH STD	N/A	6"	SHOWN
N4	3"	150#	RFSO	-	DRAIN	SCH STD	N/A	-	8"
N5	6"	150#	RFSO	-	VENT	SCH STD	N/A	-	8"
N6	3"	150#	RFSO	-	L.T. (FUTURE)	SCH STD	N/A	-	8"
N7	12"	N/A	FAB.	-	EPRV	SCH STD	N/A	-	8"
N8	4"	150#	RFSO	-	ANODE	SCH STD	N/A	-	8"
C1	3/4"	3000#	CPLG	-	TI	N/A	N/A	-	-
C2	2"	3000#	CPLG	-	LSH	N/A	N/A	-	-
C3	1/2"	3000#	CPLG	-	GREASE LINE (SKIMMER)	N/A	N/A	-	-
M1	24"x36"	N/A	12F	-	CLEANOUT c/w SPLIT COVER	N/A	N/A	-	4"
M2	24"x36"	N/A	12F	-	CLEANOUT c/w FIRETUBE	N/A	N/A	-	4"
LI	1 1/2"	3000#	CPLG	N/A	LEVEL INDICATOR	N/A	N/A	-	2 1/2" MIN
TH	1 1/4"	-	PIPE	N/A	LEVEL INDICATOR SUPPORT	SCH XH	N/A	-	2 1/2" MIN
TH	8"	N/A	FAB.	N/A	THIEF HATCH c/w EXTENSION	SCH STD	N/A	-	SHOWN

DESIGN DATA

BUILT ACCORDING TO API-12F (MODIFIED) CONSTRUCTION STANDARDS
 750 BBL, 15'-6" DIA. x 24'-0" HIGH DOUBLE WELDED BUTT JOINT STEEL STORAGE TANK
 DESIGN PRESSURE: 8oz PRESS./-0.4ozVAC. FLOOR: 1/4" THK ASTM A-36
 SHIPPING WEIGHT: 15,600 LBS. ROOF: 3/16" THK ASTM A-36
 AIR TEST: 1.0 PSIG (NO HYDRO TEST) SHELL: 3/16" THK ASTM A-36
 SERVICE: SWEET SHELL DIAMETER: 186"
 CORROSION ALLOWANCE: NONE ROOF CUT DIAMETER: 188.5625"
 LABELLED/REGISTERED: NO FLOOR CUT DIAMETER: 190"
 RADIOGRAPHY: N/A DESIGN TEMP.: +10°F

MAGNETIC PARTICLE TEST FLOOR TO SHELL JOINT (INSIDE & OUTSIDE)
 VACUUM BOX TEST FLOOR PLATE WELDS
 SURFACE PREP. - INTERNAL: INCLUDES EXTERNAL SURFACES ONLY OF INTERNAL PIPING
 SANDBLAST PER SSPC-SP5 (SIL-7) (FLOOR & 4'-0" UP SHELL)
 (10) TO (12) MILS OF DEVOE 253 (HOLIDAY FREE) ON FLR & 4'-0" UP SHL
 SURFACE PREP. - EXTERNAL: SANDBLAST AS PER SSPC-SP7 TO SHELL & ROOF
 (1) COAT OF BAR-OX 752 PRIMER TO SHELL & ROOF
 EXTERNAL COATING: SANDBLAST AS PER SSPC-SP6 TO UNDERSIDE OF FLOOR
 (12) TO (16) MILS OF COAL TAR EPOXY TO UNDERSIDE OF FLOOR
 ALL PROTRUSIONS NOT COVERED WITH INSULATION, SHOULD HAVE RUSTOLEUM 906 OR EQUIVALENT
 INSULATION: 1 1/2" THK. URETHANE INSULATION (R10) c/w (2) COATS OF BLACK SURFACE SEALANT TO SHELL & ROOF



- NOTES:**
- 1) ALL INTERNAL COATING THICKNESS MEASUREMENTS TO BE MEASURED AND RECORDED PER SSPC-PA2
 - 2) HOLIDAY TESTING OF INTERNALLY COATED SURFACES TO BE PERFORMED PER NACE RP0188-88
 - 3) SHOP TO ENSURE COUPLINGS TO PROJECT THROUGH INSULATION AS REQUIRED.
 - 4) MPI TESTING TO N8 & ANODE SUPPORT

REV.	DATE	DRWN.	APP'D.	DESCRIPTION
2	03/11/26	YB		ADD N8, ANODE, C3, SUPPORT FOR ANODE
1	03/10/31	DB		ISSUED FOR CONSTRUCTION
B	03/10/22	DB		RE-ISSUED FOR APPROVAL
0	03/10/16	IE		ISSUED FOR CONSTRUCTION (PRELIMINARY)
A	03/10/09	IE		ISSUED FOR APPROVAL

REVISIONS

A NUSCO MANUFACTURING & SUPPLY LTD.

CUSTOMER: HUSKY OIL OPERATIONS
 c/o BDR ENGINEERING LTD.
 TITLE: 750 BBL SINGLE WALLED STORAGE TANK TAG: T-710
 15'-6" DIA x 24'-0" HIGH

LOCATION: SPRING CREEK COMPRESSOR STATION QUOTATION FILE NO.: T0322-03Q01

SCALE: 3/8"=1'-0" R.D. 007182 DRWG. No. T2199-A Rev. 2
 DATE: 03/10/09