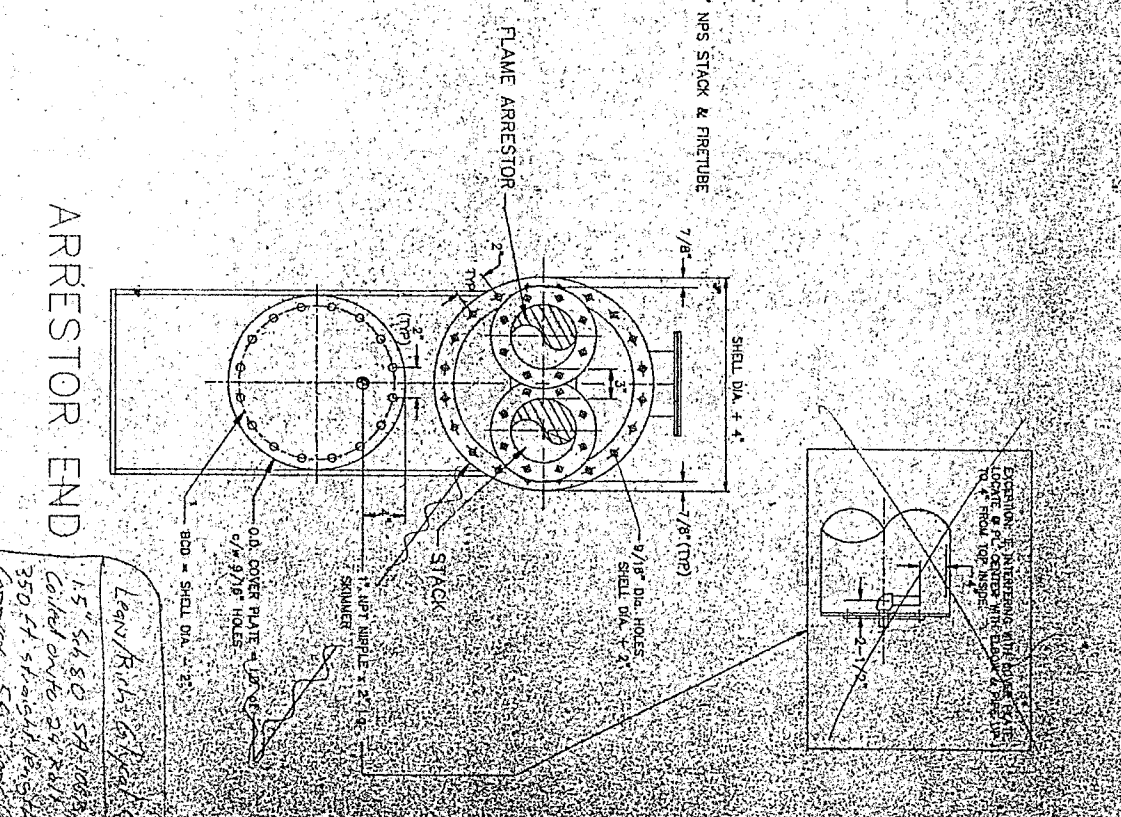
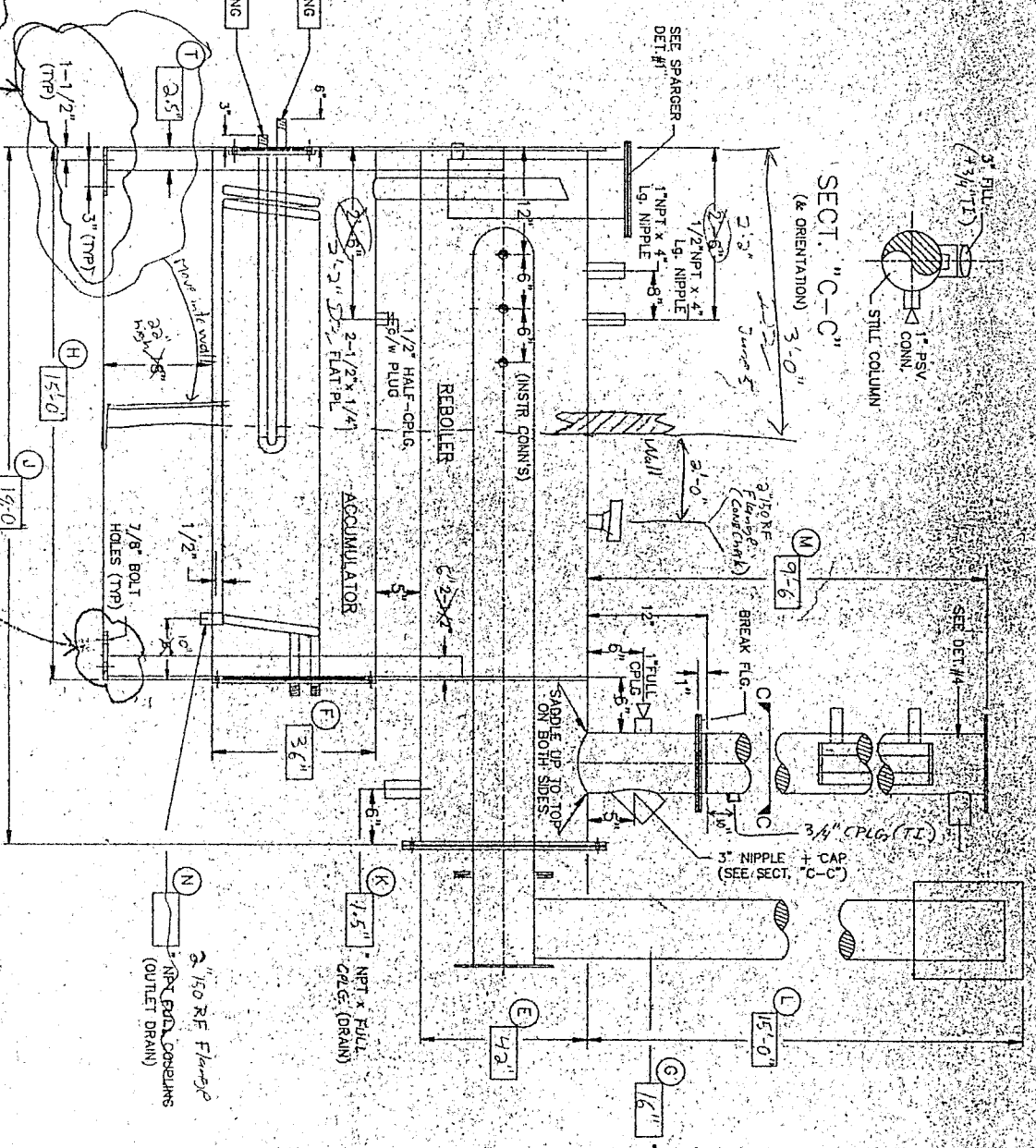
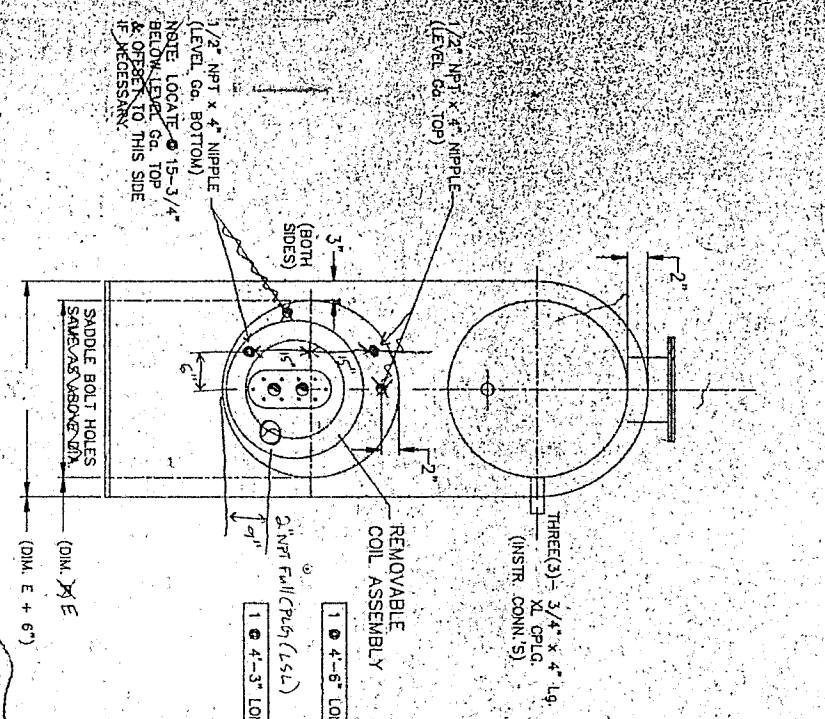


NOTE:
 A) AS DRAWN
 OR B) MIRROR IMAGE
 OR C) T.B.A.

BOXES FOR NON-STANDARD DIMENSIONS.



DET. 4: REFLUX COLUMN

DET. 1: SPARGER

DET. 2: FIRETUBE DETAIL DET. 4: REFLUX COLUMN

DET. 3: COIL ASSEMBLY

THIEF HATCH
 A) EXPOSED
 OR B) 2\"/>

VIEW 'A-A'

FRONT END

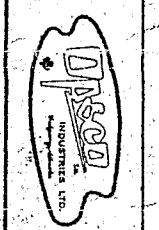
REAR END

Learn Rules of Safety
 15" x 48" x 58" (approx)
 Coiled into 24" x 11"
 350 ft 5/16" coil (approx)
 approx. 56 spargers
 3 spargers

REVISIONS				REVISIONS				ENGINEERS RECORD			
No.	DATE	BY	APP. NO.	DATE	BY	APP.	DATE	DATE	DATE	DATE	DATE
0	1/23/51	LAST DESIGN									
1	1/23/51	LAST DESIGN									
2	1/23/51	LATEST DESIGN									

CLIENT	PROJECT	TITLE	SCALE
Perichlor Jobs 235001-235011	Perichlor Jobs 235001-235011	OPSO STANDARD REBOILER	AS SHOWN

THIS DRAWING IS THE PROPERTY OF OGDEN INDUSTRIES LTD. AND IS LOANED TO THE RECIPIENT FOR HIS CONSTRUCTION USE ONLY. IN CONSIDERATION OF THE LOAN OF THIS DRAWING, THE RECIPIENT PROMISES AND AGREES THAT IT SHALL NOT BE USED IN ANY MANNER DETRIMENTAL TO THE INTEREST OF OGDEN INDUSTRIES LTD. WITHOUT THE WRITTEN PERMISSION OF OGDEN INDUSTRIES LTD. ANY REPRODUCTION OR OTHER USE OF THIS DRAWING WITHOUT THE WRITTEN PERMISSION OF OGDEN INDUSTRIES LTD. IS PROHIBITED.



V-670
 LUBE OIL SEPARATOR
 (CYCLOME SEPARATOR)
 SIZE: 20" O.D. X 8'-0" S/S
 D.P.: 1650 P#G @ 150 T
 O.P.: 1415 P#G @ 120 T

I-600
 GAS/GLYCOL EXCHANGER
 3-TRAY
 SIZE: 30" O.D. X 18'-0" S/S
 D.P.: 1650 P#G @ 150 T
 O.P.: 1415 P#G @ 120 T

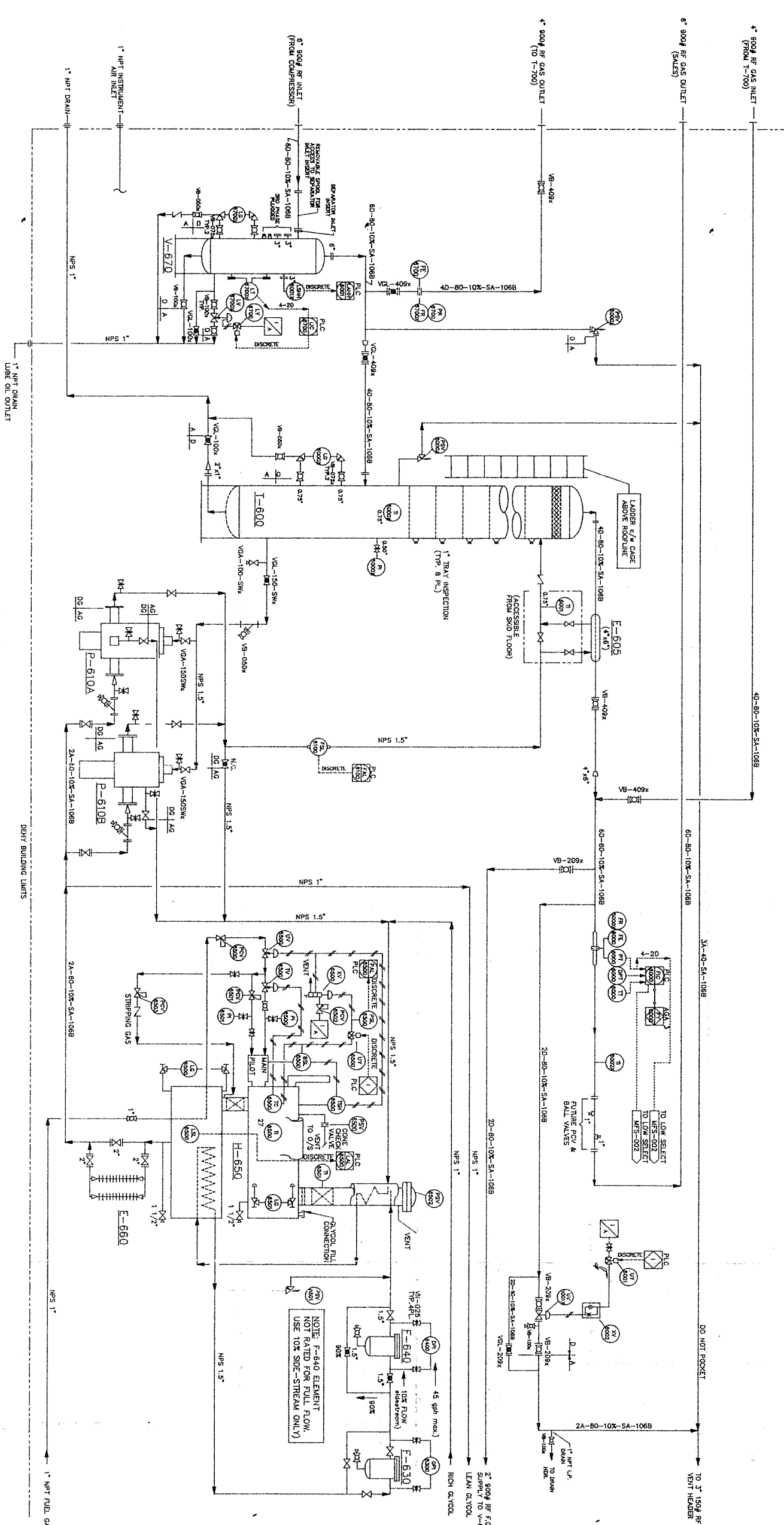
E-605
 GAS/GLYCOL EXCHANGER
 SIZE: 1850 P#G @ 150 T
 D.P.: 1650 P#G @ 150 T
 O.P.: 1415 P#G @ 120 T

H-650
 GLYCOL REGR.
 SIZE: 42" O.D. X 18'-0" LG.
 1.0 MM BTU/HR., 16" NPS
 STICK & FREELINE

E-660
 AIR/GLYCOL EXCHANGER
 SIZE: 125" X 10'-0" / 2-PASSES

DEHY BUILDING LIMITS

DO NOT POCKET
 10.3" 150# RF VENT HEADER



OPSCO STANDARD WELDED PIPELINE DESIGNATION SYSTEM
 OPTIONAL LEAVE OUT UNLESS NEEDED

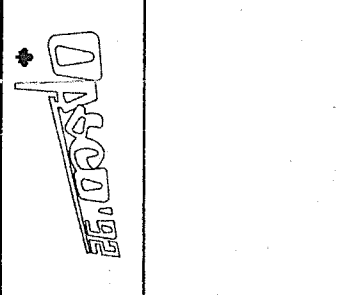
EXAMPLE: 80 - 40 - 10X - 108B - W - 1
 LINE SIZE (NPS) SIZE CLASS X-RAY MATERIAL SPEC. STRESS REL.

80-40-10X-108B-W-1
 108B W 1
 F-2500
 C-4000

THIS DRAWING IS THE PROPERTY OF OPSCO INDUSTRIES LTD. ANY REPRODUCTION OR TRANSMISSION IN ANY FORM OR BY ANY MEANS, WITHOUT THE WRITTEN PERMISSION OF OPSCO INDUSTRIES LTD. IS PROHIBITED. THE RECIPIENT PROVIDES AND AGREES THAT IT SHALL NOT BE USED IN ANY WAY DETRIMENTAL TO THE INTEREST OF OPSCO INDUSTRIES LTD. THAT IT SHALL BE RETURNED UPON REQUEST AND SHALL BE KEPT IN THE ORIGINAL CONDITION. THE RECIPIENT SHALL BE RESPONSIBLE FOR THE PROTECTION AND SECURITY OF THE DRAWING AND SHALL NOT BE RESPONSIBLE FOR ANY LOSS OR DAMAGE TO THE DRAWING.

No.	DATE	REVISIONS	BY	DATE	ENGINEERS RECORD	DATE
0	11/22/95	ISSUED FOR APPROVAL	DC			
1	12/08/95	ISSUED FOR CONSTRUCTION	DC			
2	01/29/96	ISSUED FOR CONSTRUCTION	DC			

No.	DATE	REVISIONS	BY	DATE	ENGINEERS RECORD	DATE
0	11/22/95	ISSUED FOR APPROVAL	DC			
1	12/08/95	ISSUED FOR CONSTRUCTION	DC			
2	01/29/96	ISSUED FOR CONSTRUCTION	DC			



CLIENT - PETROSTAR PETROLEUMS INC.

PROJECT - TALBOT LAKE DEHYDRATION "1" UNIT

TITLE - FLOW DIAGRAM

SCALE - AS SHOWN

DWG NO. - F-95-2320A-460

SEE DWG # L-95-2320-1412 FOR GENERAL NOTES & F-95-2320B-481 FOR BILL OF MATERIALS

V-620
P&ID GAS SCRUBBER
D.P. 150 pag 1003
O.P. 150 pag 1003

I-680
P&ID GAS VAPOR CONDENSER-8 TRAY
D.P. 150 pag 9507
O.P. 150 pag 9507

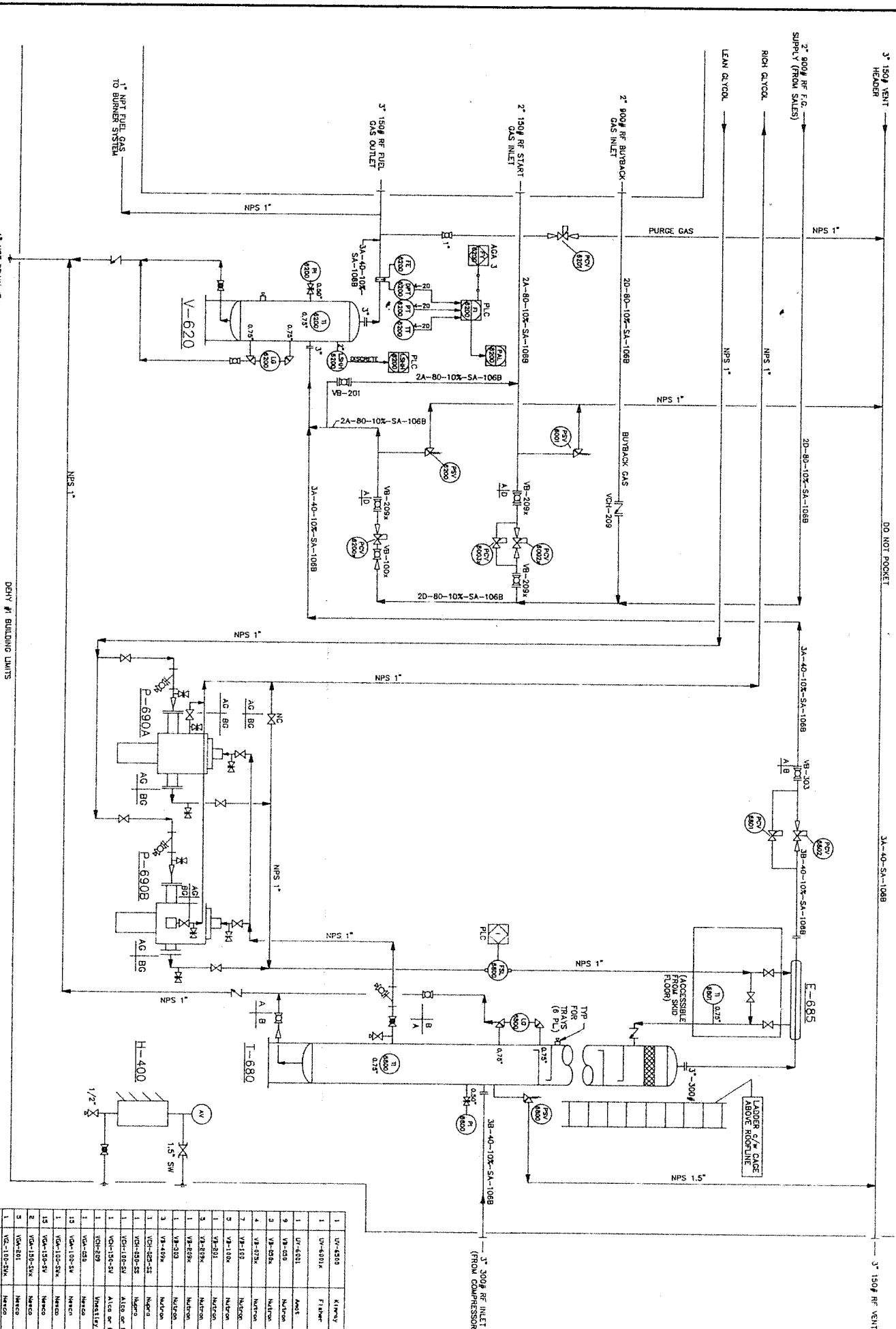
E-685
GAS / LIQUOR
EXCHANGER
D.P. 150 pag 9507
O.P. 150 pag 9507

DEHY #1 BUILDING UNITS

DO NOT POCKET

3A-40-SA-108B

3-150Q NF VENT
HEADER



SEE DWG # I-65-2320-412
FOR GENERAL NOTES

ID	DESCRIPTION
V-620	Gas Scrubber
I-680	Intermediate Storage Tank
E-685	Gas-Liquid Exchanger
H-400	Heater
V-621	Gas Scrubber
V-622	Gas Scrubber
V-623	Gas Scrubber
V-624	Gas Scrubber
V-625	Gas Scrubber
V-626	Gas Scrubber
V-627	Gas Scrubber
V-628	Gas Scrubber
V-629	Gas Scrubber
V-630	Gas Scrubber
V-631	Gas Scrubber
V-632	Gas Scrubber
V-633	Gas Scrubber
V-634	Gas Scrubber
V-635	Gas Scrubber
V-636	Gas Scrubber
V-637	Gas Scrubber
V-638	Gas Scrubber
V-639	Gas Scrubber
V-640	Gas Scrubber
V-641	Gas Scrubber
V-642	Gas Scrubber
V-643	Gas Scrubber
V-644	Gas Scrubber
V-645	Gas Scrubber
V-646	Gas Scrubber
V-647	Gas Scrubber
V-648	Gas Scrubber
V-649	Gas Scrubber
V-650	Gas Scrubber
V-651	Gas Scrubber
V-652	Gas Scrubber
V-653	Gas Scrubber
V-654	Gas Scrubber
V-655	Gas Scrubber
V-656	Gas Scrubber
V-657	Gas Scrubber
V-658	Gas Scrubber
V-659	Gas Scrubber
V-660	Gas Scrubber

OPSCO STANDARD WELDED PIPELINE DESIGNATION SYSTEM
OPTIONAL: LEAVE OUT UNLESS NEEDED

THIS DRAWING IS THE PROPERTY OF OPSCO INDUSTRIES LTD.
AND LOANED TO THE RECIPIENT FOR HIS CONFIDENTIAL USE
ONLY. IT IS TO BE RETURNED TO THE RECIPIENT WITHIN
THE TIME FRAME SPECIFIED BY THE LOAN AGREEMENT.
IT IS NOT TO BE REPRODUCED, COPIED, OR
TRANSMITTED IN ANY MANNER WITHOUT THE WRITTEN
PERMISSION OF OPSCO INDUSTRIES LTD.

DEHY #1 BUILDING UNITS

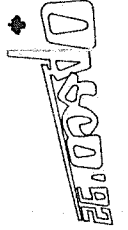
REVISIONS

NO	DATE	BY	APP. NO.	DATE	REVISIONS
0	1/22/74	RE: DESIGN			
1	12/29/74	ISSUED FOR APPROVAL			
2	1/7/75	ISSUED FOR CONSTRUCTION			

ENGINEERS RECORD

NO	DATE	BY	APP. NO.	DATE	REVISIONS
1					
2					

DRAMA BY
CHECKED BY
APPROV. BY
ISSUED TO
SHOP



ID	NO.	DATE	REVISIONS
1	1	1/22/74	RE: DESIGN
2	1	12/29/74	ISSUED FOR APPROVAL
3	1	1/7/75	ISSUED FOR CONSTRUCTION

PETROSTAR PETROLEUMS INC.
C/O GEMINI ENGINEERING LTD.
TABOET LAKE DEHYDRATION #1 UNIT
FLOW DIAGRAM

DWG NO. I-65-2320-481

SCALE: AS SHOWN

CLIENT: PETROSTAR PETROLEUMS INC.

PROJECT: TABOET LAKE DEHYDRATION #1 UNIT

TITLE: FLOW DIAGRAM

SCALE: AS SHOWN

CLIENT: PETROSTAR PETROLEUMS INC.

PROJECT: TABOET LAKE DEHYDRATION #1 UNIT

TITLE: FLOW DIAGRAM

SCALE: AS SHOWN

CLIENT: PETROSTAR PETROLEUMS INC.

PROJECT: TABOET LAKE DEHYDRATION #1 UNIT

TITLE: FLOW DIAGRAM

SCALE: AS SHOWN

CLIENT: PETROSTAR PETROLEUMS INC.

PROJECT: TABOET LAKE DEHYDRATION #1 UNIT

TITLE: FLOW DIAGRAM

SCALE: AS SHOWN

CLIENT: PETROSTAR PETROLEUMS INC.

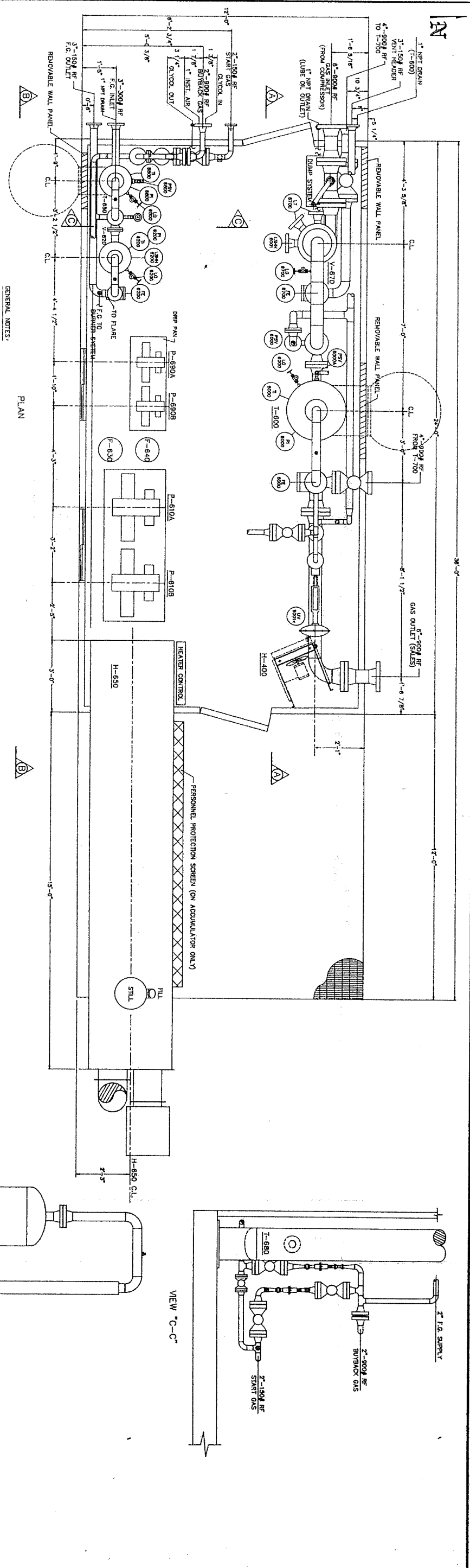
PROJECT: TABOET LAKE DEHYDRATION #1 UNIT

TITLE: FLOW DIAGRAM

SCALE: AS SHOWN

CLIENT: PETROSTAR PETROLEUMS INC.

PROJECT: TABOET LAKE DEHYDRATION #1 UNIT

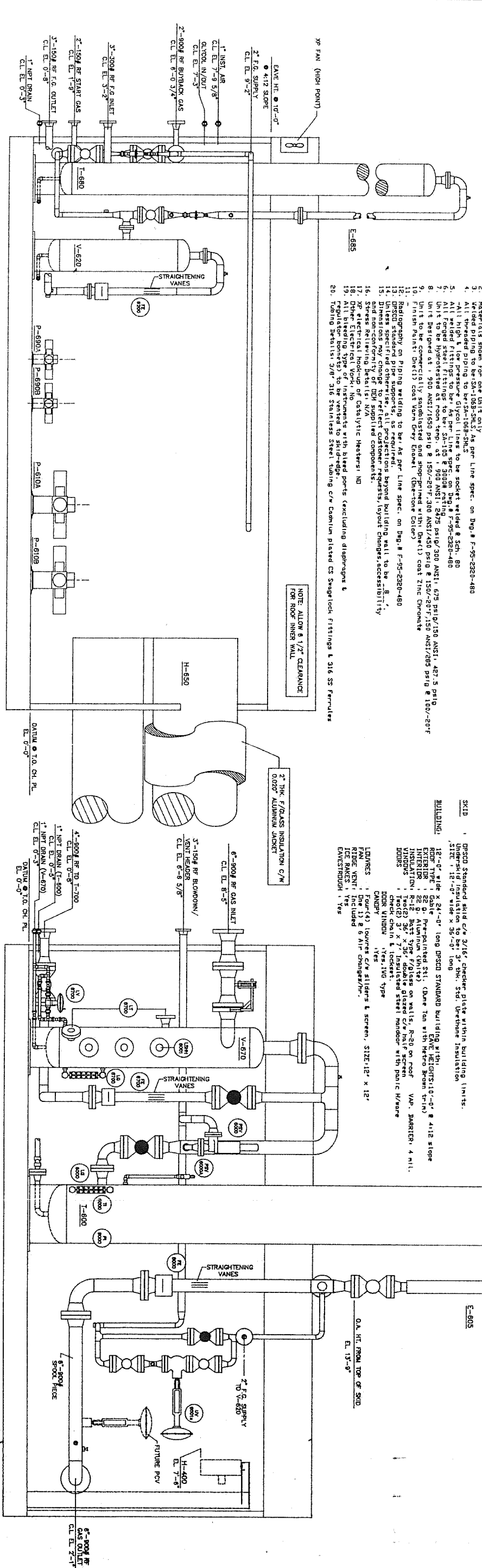


PLAN

GENERAL NOTES:

1. No of Units (24, Dn(1))
2. Materials shown for one Unit only
3. Welded piping to be SA-106-30.5 As per Line Spec. on Dwg. # F-95-2320-480
4. All threaded piping to be SA-106-30.5 As per Line Spec. on Dwg. # F-95-2320-480
5. All High Pressure Glycol Lines to be socket welded & Sch. 80
6. All High Pressure Glycol Lines to be socket welded & Sch. 80
7. Unit to be Hydrotested at room temp. at 1,900 ANSI, 2475 psig/300 ANSI, 487.5 psig
8. Unit to be Hydrotested at room temp. at 1,900 ANSI, 2475 psig/300 ANSI, 487.5 psig
9. Unit to be Hydrotested at room temp. at 1,900 ANSI, 2475 psig/300 ANSI, 487.5 psig
10. Unit to be Hydrotested at room temp. at 1,900 ANSI, 2475 psig/300 ANSI, 487.5 psig
11. Unit to be Hydrotested at room temp. at 1,900 ANSI, 2475 psig/300 ANSI, 487.5 psig
12. Radiography on piping welding to be as per Line Spec. on Dwg. # F-95-2320-480
13. Radiography on piping supports, as required, beyond building wall to be as per Line Spec. on Dwg. # F-95-2320-480
14. Dimensions may change to reflect customer requests, layout changes, etc. (S-1011)
15. Dimensions may change to reflect customer requests, layout changes, etc. (S-1011)
16. Stress relieving details (S-1011)
17. Stress relieving details (S-1011)
18. Dimensions may change to reflect customer requests, layout changes, etc. (S-1011)
19. All bleeding type of instruments with bleed ports (excluding dispensing) &
20. Tearing Details 3/8" 316 Stainless Steel, tubing c/w Cambrun plated CS Smeaglock fittings & 316 SS Ferrules

SKID
 OPSCO Standard skid c/w 3/16" checker plate within building limits.
 Under-skid insulation to be 3" thick, Std. Urethane Insulation
 Size: 12'-0" wide x 38'-0" long
 12'-0" wide x 24'-0" long OPSCO Standard building with:
 EXTERIOR: 22 B. Aluminum (White)
 INTERIOR: 22 B. Aluminum (White)
 INSULATION: R-12 Batt type F/G/lags on walls, R-28 on roof
 FLOORING: 3" x 7" Insulated steel checker plate
 DOORS: 10'0" x 10'0" Insulated steel overhead door with Public H/door
 check chain & lockset.
 DOOR: 10'0" x 10'0" type
 LIFTERS: 10'0" x 10'0" c/w sliders & screen, size 12' x 12'
 RIDGE VENT: Included & Air Changer/In.
 ICE RAKES: Yes
 EAVESTROUGHS: Yes



SECTION ELEV "B-B"

SECTION ELEV "A-A"

NO.	DATE	REVISIONS	BY	DATE	REVISIONS	BY	DATE	ENGINEERS RECORD	DATE
1	1/22/94	FOR APPROVAL	DC						
2	7/27/94	ISSUED FOR CONSTRUCTION	DC						
2	7/27/94	ISSUED AS BUILT	DC						

CLIENT	PROJECT	TITLE
PETROSTAR PETROLEUM C/O GENMIL ENGINEERING LTD.	TALBOT LAKE DEHYDRATION	LAYOUT DIAGRAM

DATE	BY	APPROVED BY
1/22/94	DC	DC
7/27/94	DC	DC
7/27/94	DC	DC

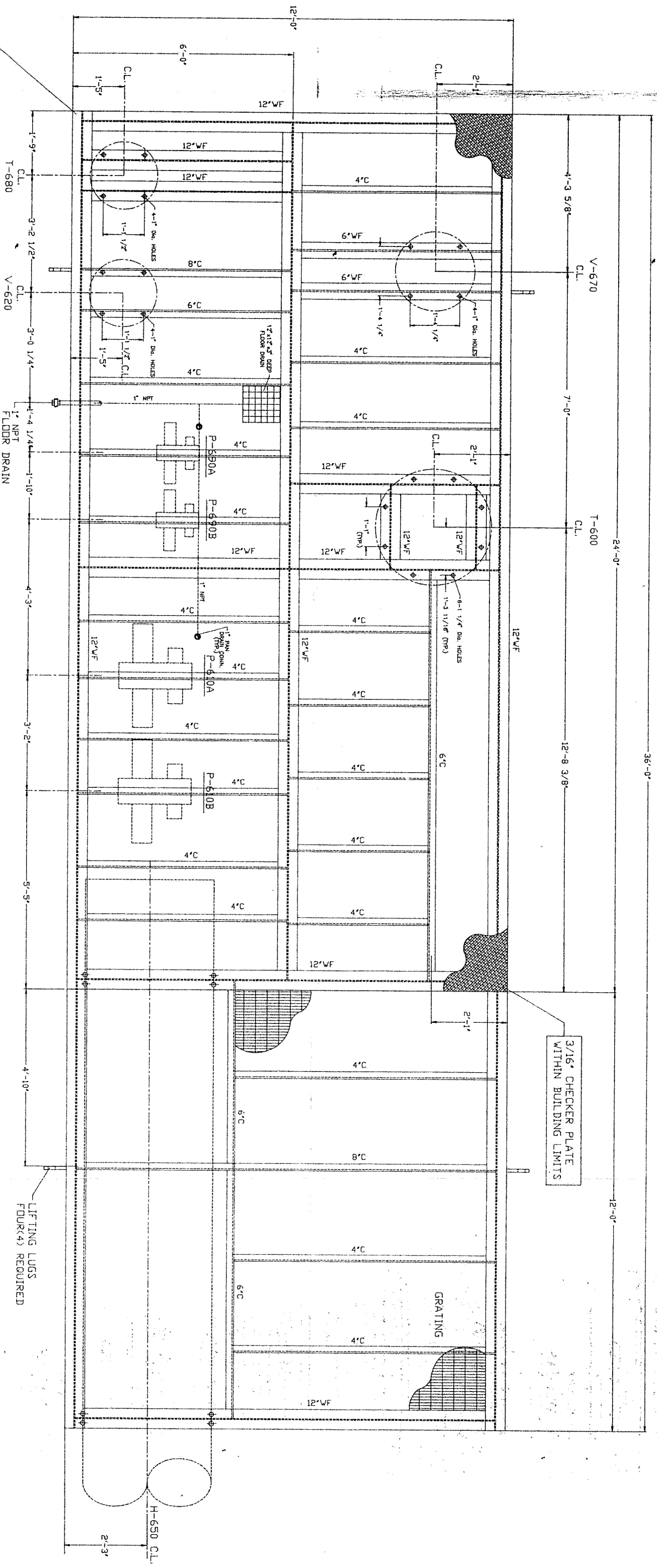


3" THK. STD. GRADE URETHANE
UNDERSKID INSULATION REQ'D.

3/16" CHECKER PLATE
WITHIN BUILDING LIMITS

LIFTING LUGS
FDURK(4) REQUIRED

PLAN

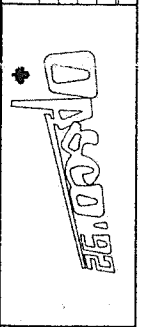


THIS DRAWING IS THE PROPERTY OF OHSOCON2 INDUSTRIES LTD.
AND LOANED TO THE RECIPIENT FOR HIS CONVEYANCE. IT IS NOT
TO BE REPRODUCED OR TRANSMITTED IN ANY FORM OR BY ANY
MEANS, ELECTRONIC OR MECHANICAL, INCLUDING PHOTOCOPYING,
RECORDING, OR BY ANY INFORMATION STORAGE AND RETRIEVAL
SYSTEM, WITHOUT THE WRITTEN PERMISSION OF OHSOCON2
INDUSTRIES LTD.

NO.	DATE	REVISIONS	BY	APP'D	NO.	DATE	REVISIONS	BY	APP'D
0	NOV. 29 1995	FOR APPROVAL							
1	DEC. 7 1995	REVISED AS PER CUST. M/CU							
2	JAN. 28 1996	ISSUED FOR CONSTRUCTION							

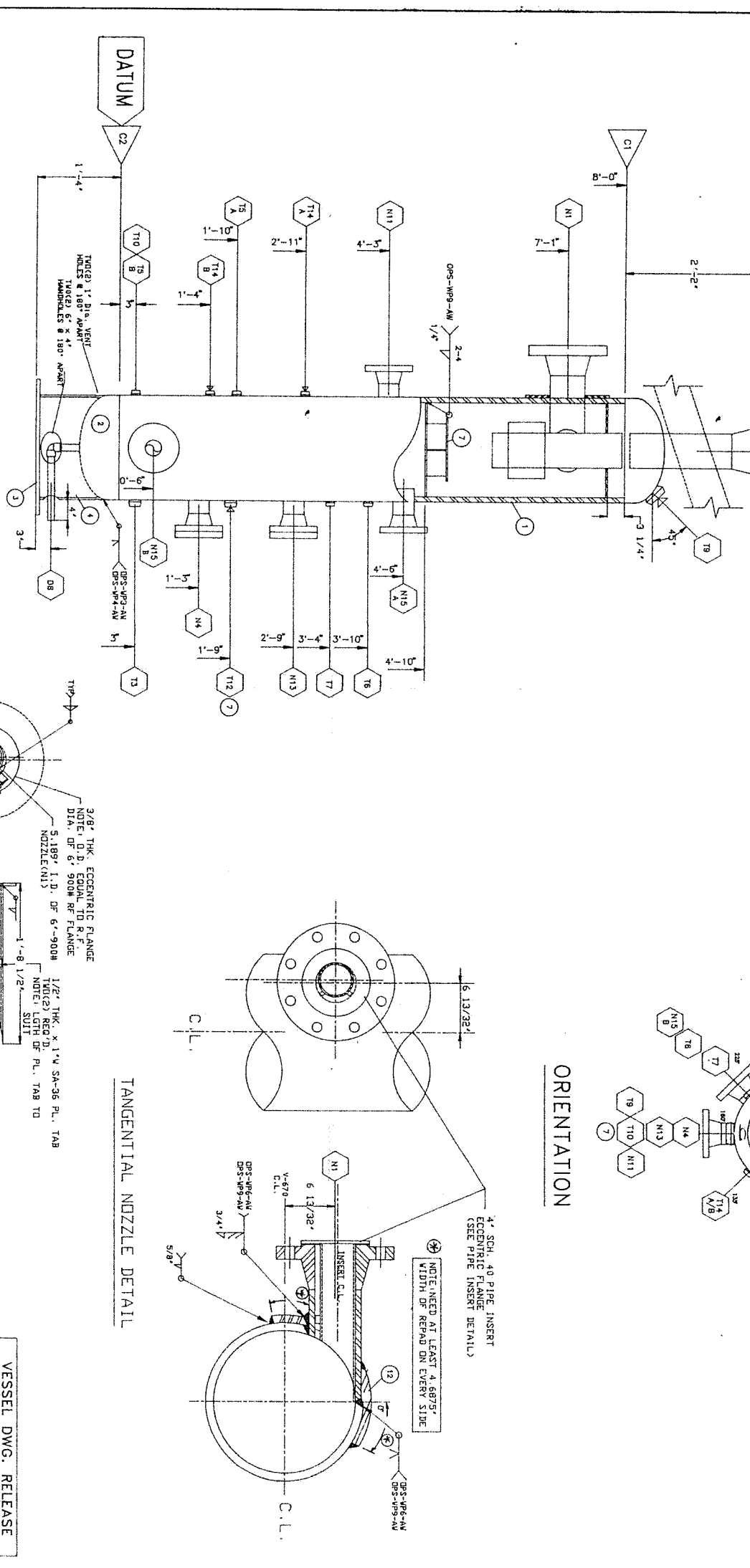
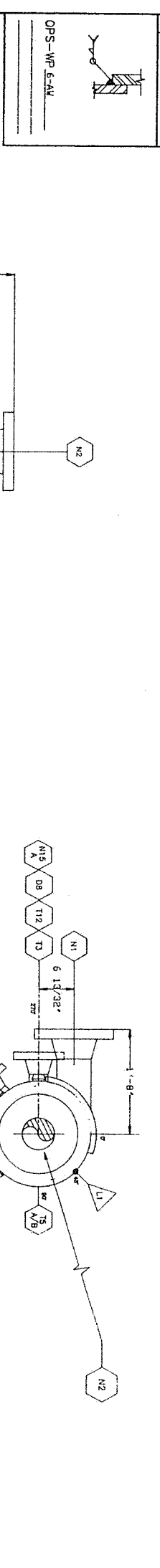
BY	APP'D	NO.	DATE	REVISIONS	BY	APP'D	NO.	DATE	REVISIONS

ENGINEER'S RECORD	DATE
DRAWN BY: DG	NOV. 29, 1995
CHECKED BY:	
APPROV. BY:	
ISSUED TO: SHOP	



CUSTOMER	PETROSTAR PETROLEUMS INC.
PROJECT	C/O GEMINI ENGINEERING LIMITED
TITLE	TALBOT LAKE DEHYDRATION 1" UNIT
SCALE	1/8" = 1'-0"
JOB NO.	JM-95-2320
DWG. NO.	S-95-2320-1031
REV.	2

1	CIRCS & MAIN SEAMS	2	T.O.L. & S.O.L.	3	NOZZLE	4	Coupling	5	Other Drain	6	NOZZLE C/W REPAD	7	NOZZLE C/W REPAD	8	TACK WELD	9	TAPER BORE NOZZLE	10	RFSSO	11	COIL	12	STRAIGHT BORE NOZZLE
---	--------------------	---	-----------------	---	--------	---	----------	---	-------------	---	------------------	---	------------------	---	-----------	---	-------------------	----	-------	----	------	----	----------------------



ELEVATION

REMOVABLE PIPE INSERT DETAIL

TANGENTIAL NOZZLE DETAIL

ORIENTATION

No.	DATE	REVISIONS	BY	APP.
0	11/23/95	PRELIMINARY	SPB	
1	12/12/95	REVISED PER D.C. W/1.	SPB	
2	04/12/96	REDESIGNED & REVISED BY EN	SPB	
3	04/12/96	REVISED PER D.C. W/1.	SPB	

VESSEL DWG. RELEASE

DATE: _____

FABRICATION COPY NO: _____

SIGNED: _____

ITEM	REQ'D	SIZE	TYPE	RATING	SCH.	MAT'L SPEC.	DESCRIPTION
1	1	20" O.D.	ROLLED PLATE	9008	160	SA-516-70N	20" O.D. x 8'-0" H x 1/2" THK. CARBON STEEL
2	2	20" O.D.	FURNISHED	9008	160	SA-516-70N	20" O.D. x 1.000" THK. CARBON STEEL
3	1	26" O.D.	PLATE	9008	160	SA-516-70N	26" O.D. x 1.000" THK. CARBON STEEL
4	1	20" O.D.	FRN	9008	160	SA-516-70N	20" O.D. x 1.000" THK. CARBON STEEL
5	1		ASSY				FLANGES
6	1		ASSY				CAUTION: SPECIAL DESIGN
7	1	6" x 4"	PLATE	9008	160	SA-516-70N	6" x 4" x 1/2" THK. CARBON STEEL
8	1	6"	FRN	9008	160	SA-516-70N	6" x 1/2" THK. CARBON STEEL
9	1	6"	FRN	9008	160	SA-516-70N	6" x 1/2" THK. CARBON STEEL
10	1	6"	FRN	9008	160	SA-516-70N	6" x 1/2" THK. CARBON STEEL
11	1	6"	FRN	9008	160	SA-516-70N	6" x 1/2" THK. CARBON STEEL
12	1	16" x 21"	PLATE	9008	160	SA-516-70N	16" x 21" x 1/2" THK. CARBON STEEL
13	1	2"	TOL.	9008	160	SA-105	2" x 1/2" THK. CARBON STEEL
14	2	1"	TOL.	9008	160	SA-105	1" x 1/2" THK. CARBON STEEL
15	2	3/4"	TOL.	9008	160	SA-105	3/4" x 1/2" THK. CARBON STEEL
16	1	1/2"	TOL.	9008	160	SA-105	1/2" x 1/2" THK. CARBON STEEL
17	1	2"	TOL.	9008	160	SA-105	2" x 1/2" THK. CARBON STEEL
18	1	1"	PIPE	9008	160	SA-105	1" x 1/2" THK. CARBON STEEL
19	1	1"	PIPE	9008	160	SA-105	1" x 1/2" THK. CARBON STEEL
20	2	2"	FRN	9008	160	SA-105	2" x 1/2" THK. CARBON STEEL
21	1	1"	FRN	9008	160	SA-105	1" x 1/2" THK. CARBON STEEL
22	2	3/4"	FRN	9008	160	SA-105	3/4" x 1/2" THK. CARBON STEEL
23	3	3"	FRN	9008	160	SA-105	3" x 1/2" THK. CARBON STEEL
24	1	3"	FRN	9008	160	SA-105	3" x 1/2" THK. CARBON STEEL
25	2	3"	FRN	9008	160	SA-105	3" x 1/2" THK. CARBON STEEL
26	2	3"	FRN	9008	160	SA-105	3" x 1/2" THK. CARBON STEEL

MARK	SIZE	RATING	SERVICE	W.D.	W.42	W.43	H.	EXT.	TOTAL
N1	6"	9008	FRN GAS INLET	12.3	3/4"	5/8"	1/2"	SHOWN	8.9, 12
N2	6"	9008	FRN GAS OUTLET	12	3/8"	1/2"	2 1/4"	SHOWN	18, 11
N3	1"	3008	TOL. HEAD RAMP	2	N/A	N/A	N/A	N/A	14
N4	3"	9008	FRN HEAD LC C/W BLIND	12.3	1/2"	1/2"	1 1/2"	N/A	23, 24, 25
N5	1/2"	3008	TOL. HEAD LEVEL GAUGE	2	N/A	N/A	N/A	N/A	16
N6	1/2"	3008	TOL. HEAD PRESSURE INDICATOR	2	N/A	N/A	N/A	N/A	15
N7	3/4"	3008	TOL. HEAD TEMPERATURE INDICATOR	12.3	3/8"	3/8"	1 1/2"	N/A	18, 19
N8	1"	3008	TOL. HEAD BRAIN	2	N/A	N/A	N/A	N/A	17, 20
N9	2"	3008	TOL. INSPECTION C/W PLUG	2	N/A	N/A	N/A	N/A	17, 20
N10	2"	3008	TOL. INSPECTION C/W PLUG	2	N/A	N/A	N/A	N/A	17, 20
N11	3"	9008	FRN HEAD	12.3	1/2"	1/2"	1 1/2"	N/A	23, 24
N12	1"	3008	TOL. FOOT. HE. DUMP C/W PLUG	2	N/A	N/A	N/A	N/A	14, 21
N13	3"	9008	FRN FOOT. HE. LC C/W BLIND	12.3	1/2"	1/2"	1 1/2"	N/A	23, 24, 25
N14	3"	9008	FRN FOOT. HE. LC C/W BLIND	12.3	1/2"	1/2"	1 1/2"	N/A	23, 24, 25
N15	3"	9008	FRN FOOT. HE. LC C/W BLIND	12.3	1/2"	1/2"	1 1/2"	N/A	23, 24, 25

DESIGN DATA

DESIGN & CONSTRUCTION: Vessel to be designed and constructed in accordance with ASME Section VIII, Division 1 and Pressure Vessel Code Section VIII, Division 1, Edition 1992.

MAINT: -20°F. except from Impact testing as per UG-28(f).

TEMP: DESIGN TEMPERATURE: 150°F. MATERIAL: SA-516-70N. THICKNESS: 1/2" TO 1 1/2".

INSULATION: 1" MIN. INSULATION ON ALL EXTERIOR SURFACES.

WELDING: WELDING PROCEDURE: ASME Section VIII, Division 1, Appendix Q.

INSPECTION: ALL WELDS TO BE INSPECTED BY A QUALIFIED INSPECTOR.

FINISH: ALL SURFACES TO BE FINISHED TO A 32 R.M.S. FINISH.

PAINT: ALL EXTERIOR SURFACES TO BE PAINTED WITH AN ANTI-RUST PAINT.

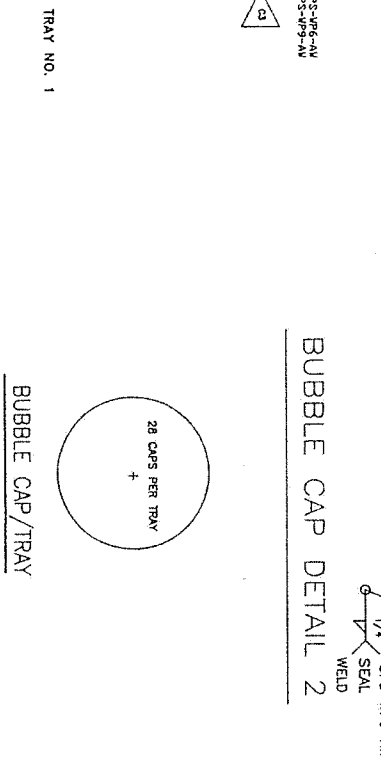
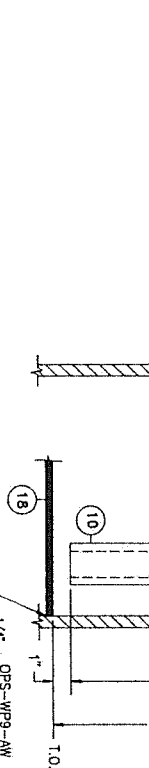
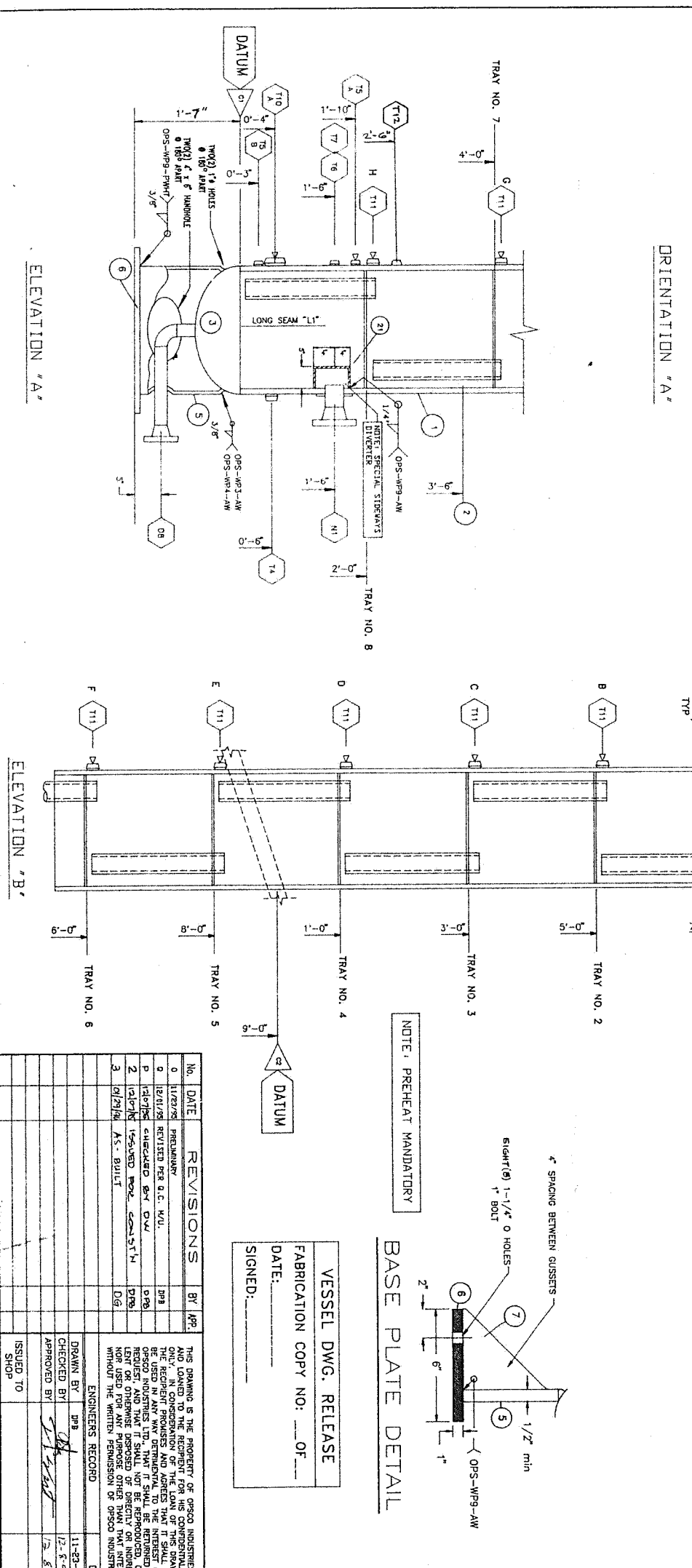
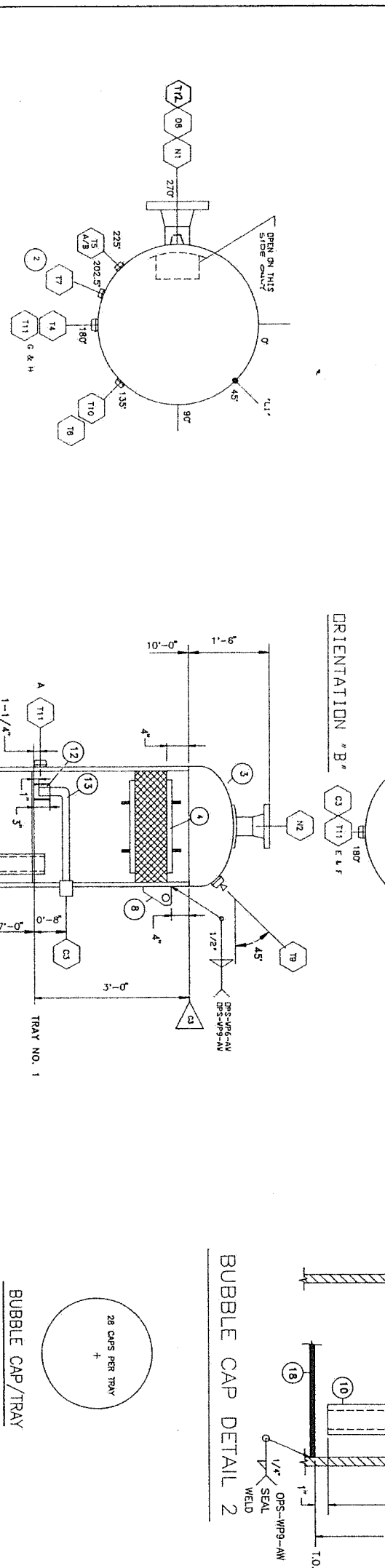
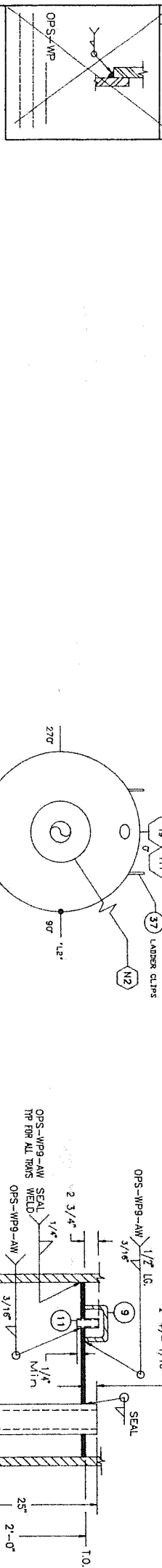
MARKING: ALL WELDS TO BE MARKED WITH A PERMANENT IDENTIFICATION SYSTEM.

NOTES: Full on long seam, Spot on circles (unless), Spot on nozzle, greater than 10" H or 1 1/2" V.T.

CLIENT: PETROSTAR PETROLEUMS INC.
PROJECT: TALBOT LAKE COMPRESSOR STATION
DEHYDRATION '1'

TITLE: 20" O.D. x 8'-0" S/S 3-PI. VERT. INLET SEP.
 Scale: 1/8" = 1'-0"
 Date: 11-23-1995

1	ORCS & MAIN SEAMS	2	TOOL & SOIL	3	NOZZLE	4	COUPLING	5	OTHER	DRAIN	6	NOZZLE C/W REPAIR	7	NOZZLE C/W REPAIR	8	TACK WELD	9	TAPER BORE NOZZLE	10	RF30	11	COIL	12	STRAIGHT BORE NOZZLE
---	-------------------	---	-------------	---	--------	---	----------	---	-------	-------	---	-------------------	---	-------------------	---	-----------	---	-------------------	----	------	----	------	----	----------------------



NO.	DATE	REVISIONS	BY	APP.
0	11/23/95	PRELIMINARY	SPB	
1	12/15/95	REVISED PER G.C. HOLD	SPB	
2	1/10/96	CHECKED BY G.W.	SPB	
3	2/12/96	ISSUED FOR CONSTRUCTION	SPB	
4	2/12/96	AS-BUILT	DG	

DESIGN DATA

VESSEL TO BE DESIGNED AND CONSTRUCTED IN ACCORDANCE WITH ASME SECTION VIII AND PRESSURE VESSEL CODE SECTION VIII DIV. 1

DESIGNER: PETROSTAR PETROLEUMS INC.

CHECKED BY: TALBOT LAKE ENGINEERING LTD.

APPROVED BY: [Signature]

DATE: 11-23-1995

ISSUED TO: SHION

ITEM	REQ'D	SIZE	TYPE	RATING	SCH.	MAT. SPEC.	DESCRIPTION
1	1	30" O.D.	FILED			SA-516-70N	30" O.D. x 19'-0" L x 6" x (2 PLATES OF 10.4.91)
2	1	6" x 4"	FORGED			SA-516-70N	20" O.D. x 1.500" THK FORGED H.M.S. ELL. SILE HEAD (1.375" B.P. COU.F.)
3	2	30" O.D.	PLATE			SA-516-70	30" O.D. x 3/4" x 19'-0" L x 5 1/4" x 19'-0" L
4	1	8" O.D.	PLATE			SA-516-70	8" O.D. x 3/4" x 19'-0" L
5	1	30" O.D.	ENW			SA-516-70	DRISCO BARREL PLATE (STD. 1.25" THK.)
6	1	30" O.D.	PLATE			SA-516-70	DRISCO BARREL PLATE (STD. 1.25" THK.)
7	1	30" O.D.	PLATE			SA-516-70	DRISCO BARREL PLATE (STD. 1.25" THK.)
8	2	1" x 1/4" x 19'-0" L	ENW			SA-516-70	LIFTING LUGS
9	2	2"	ENW			SA-516-70	INLET CAPS CS
10	2	2"	ENW			SA-516-70	DOWNCOMER PIPE
11	1	1 1/4"	ENW			SA-516-70	RISER PIPE
12	1	3"	SHLS			SA-516-70	PIPE
13	1	1"	SHLS			SA-516-70	PIPE COILS
14	2	4"	RFWN			SA-180N	ANSI FLANGES
15	1	4"	PIPE			SA-516-70	SHLS PIPE
16	1	1/2"	PLATE			SA-516-70	INLET DIVERTER
17	1	2"	RF			SA-516-70	ANSI FLANGE
18	1	10" O.D.	PLATE			SA-516-70	REPAIR ON SHELL x 0.500" THK
19	1	8" O.D.	PLATE			SA-516-70	REPAIR ON HEAD x 0.375" THK
20	2	1"	WPT			SA-105	HEX. HEAD PLUG
21	1	3/16" THK	PLATE			SA-516-70	WPT
22	1	1 1/2"	DRUG			SA-105	DRUG
23	1	1"	TDL			SA-105	TDL ON 30"
24	1	2"	TDL			SA-105	TDL ON 30"
25	1	2"	TDL			SA-105	TDL ON 30"
26	1	2"	TDL			SA-105	TDL ON 30"
27	1	2"	TDL			SA-105	TDL ON 30"
28	1	1 1/2"	TDL			SA-105	TDL ON 30"
29	1	1 1/2"	WPT			SA-105	WPT
30	1	1 1/2"	WPT			SA-105	WPT
31	1	2"	PIPE			SA-105	SHLS PIPE
32	1	2"	PLATE			SA-516-70	STIFFENERS
33	1	2"	WPT			SA-516-70	90 DEG. L.R. ELBOW
34	1	2"	RF			SA-516-70	ANSI FLANGE
35	1	2"	RF			SA-516-70	ANSI FLANGE
36	1	2"	RF			SA-516-70	ANSI FLANGE
37	1	2"	RF			SA-516-70	ANSI FLANGE
38	1	10" O.D.	PLATE			SA-516-70	REPAIR ON SHELL x 0.500" THK
39	1	8" O.D.	PLATE			SA-516-70	REPAIR ON HEAD x 0.375" THK
40	2	1"	WPT			SA-105	HEX. HEAD PLUG
41	2	2"	WPT			SA-105	HEX. HEAD PLUG

