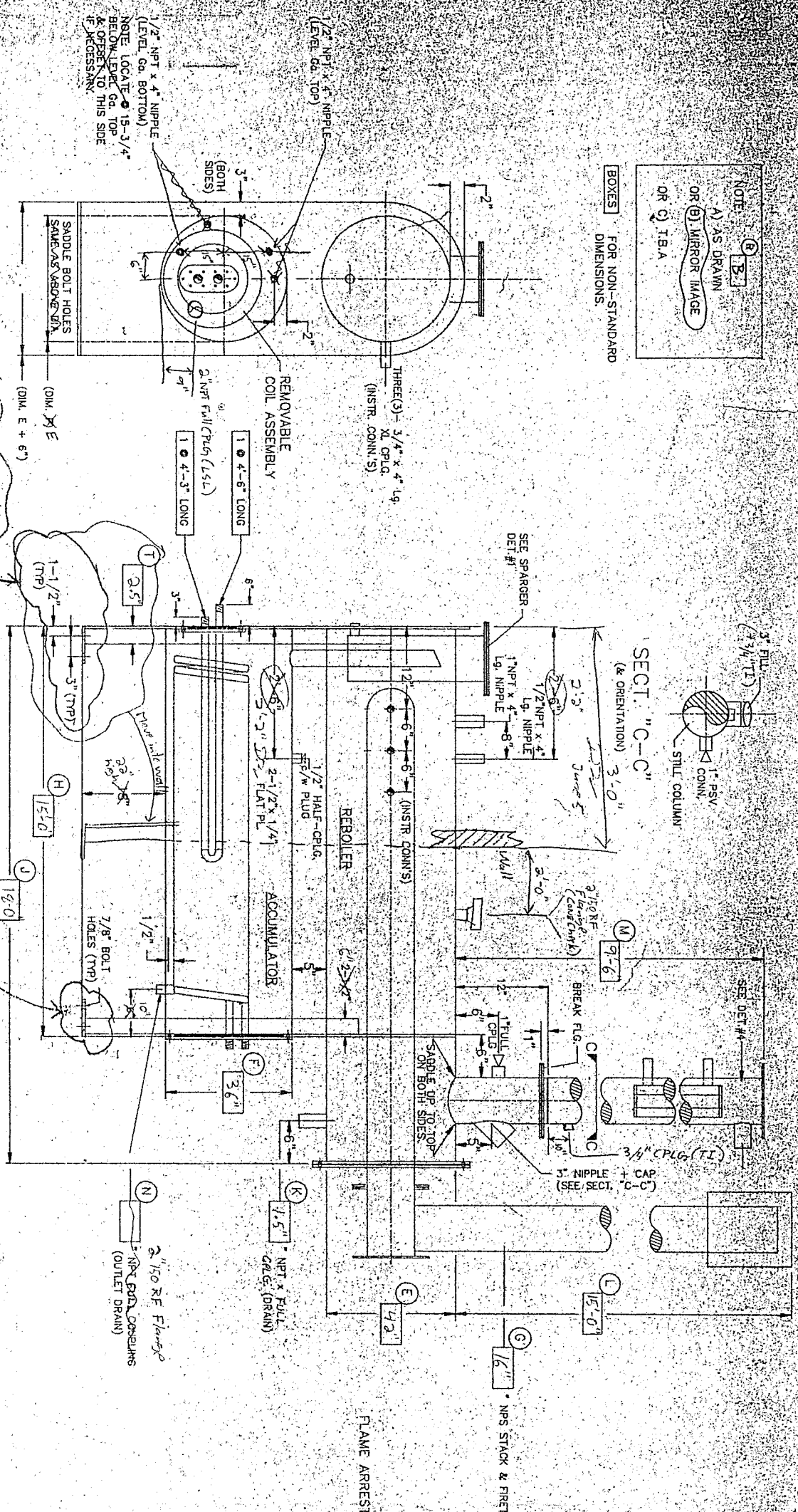
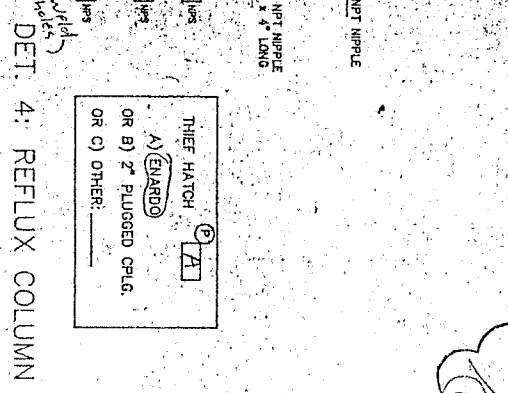


NOTE: **(B)**  
 A) AS DRAWN  
 OR B) MIRROR IMAGE  
 OR C) T.B.A.

BOXES FOR NON-STANDARD DIMENSIONS.



FRONT (INSIDE BLDG.)



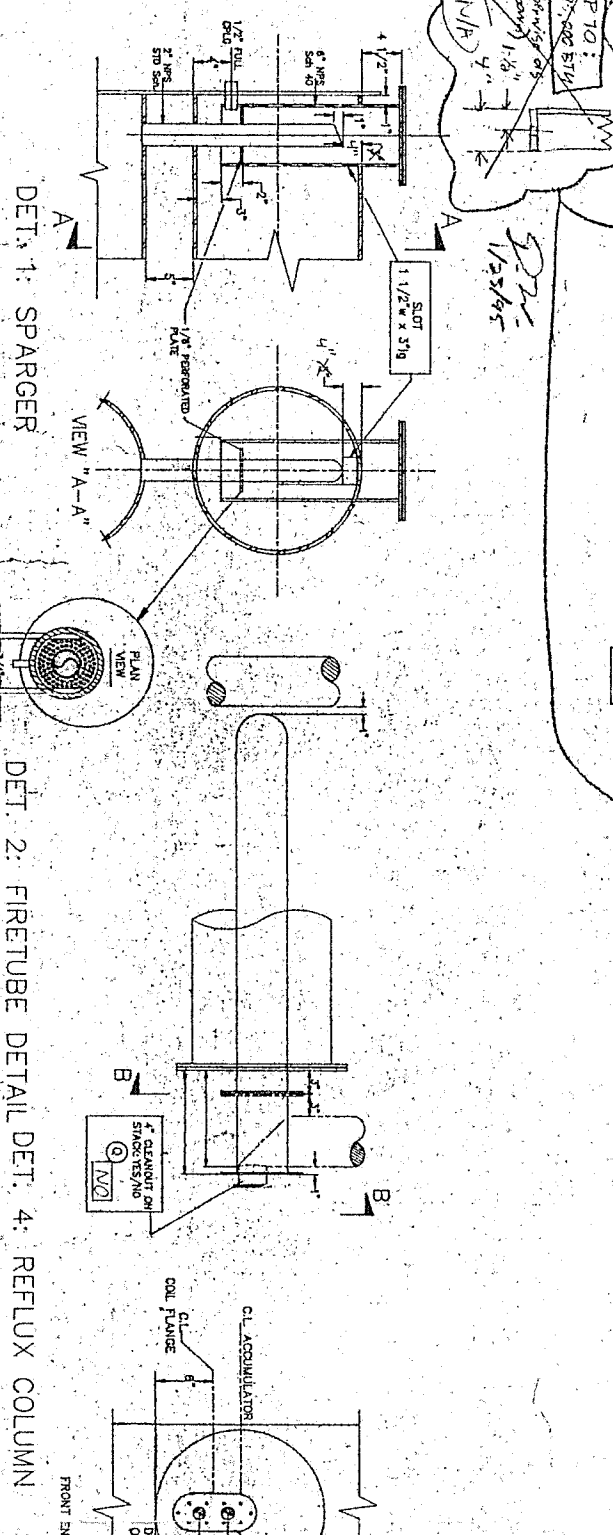
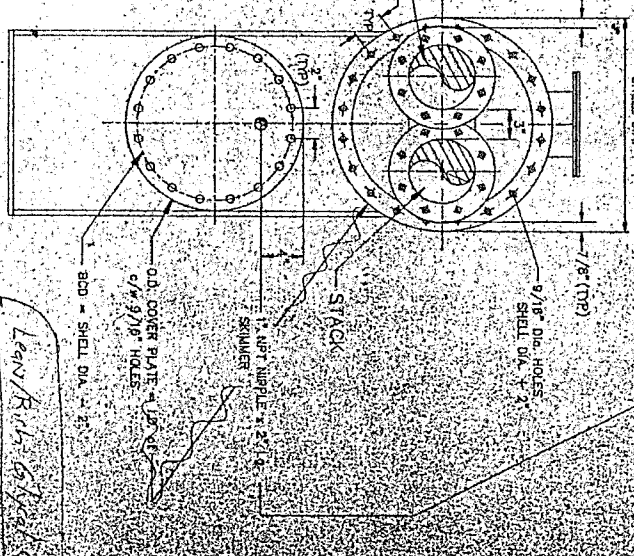
DET. 4: REFLUX COLUMN

DET. 1: SPARGER

DET. 2: FIRETUBE DETAIL DET. 4: REFLUX COLUMN

DET. 3: COIL ASSEMBLY

ARRESTOR END



DET. 1: SPARGER

DET. 2: FIRETUBE DETAIL DET. 4: REFLUX COLUMN

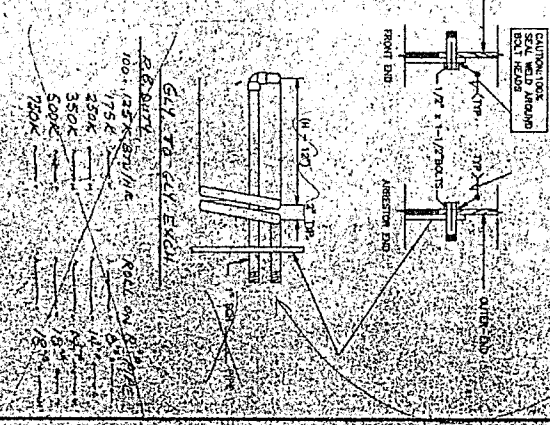
DET. 3: COIL ASSEMBLY

THIS DRAWING IS THE PROPERTY OF OPSCO INDUSTRIES LTD. AND LOANED TO THE RECIPIENT FOR HIS CONSTRUCTIONAL USE ONLY. IN CONSIDERATION OF THE LOAN OF THIS DRAWING, THE RECIPIENT PROMISES AND AGREES THAT IT SHALL NOT BE REPRODUCED, COPIED, EITHER WHOLLY OR IN PART, OR IN ANY MANNER WITHOUT THE WRITTEN PERMISSION OF OPSCO INDUSTRIES LTD.

No.	DATE	REVISIONS	BY	DATE	REVISIONS	BY	DATE
0	11/23/54	LATEST DESIGN	LT				
1	11/23/54	LATEST DESIGN	AMR				
2	11/23/54	LATEST DESIGN	AMR				

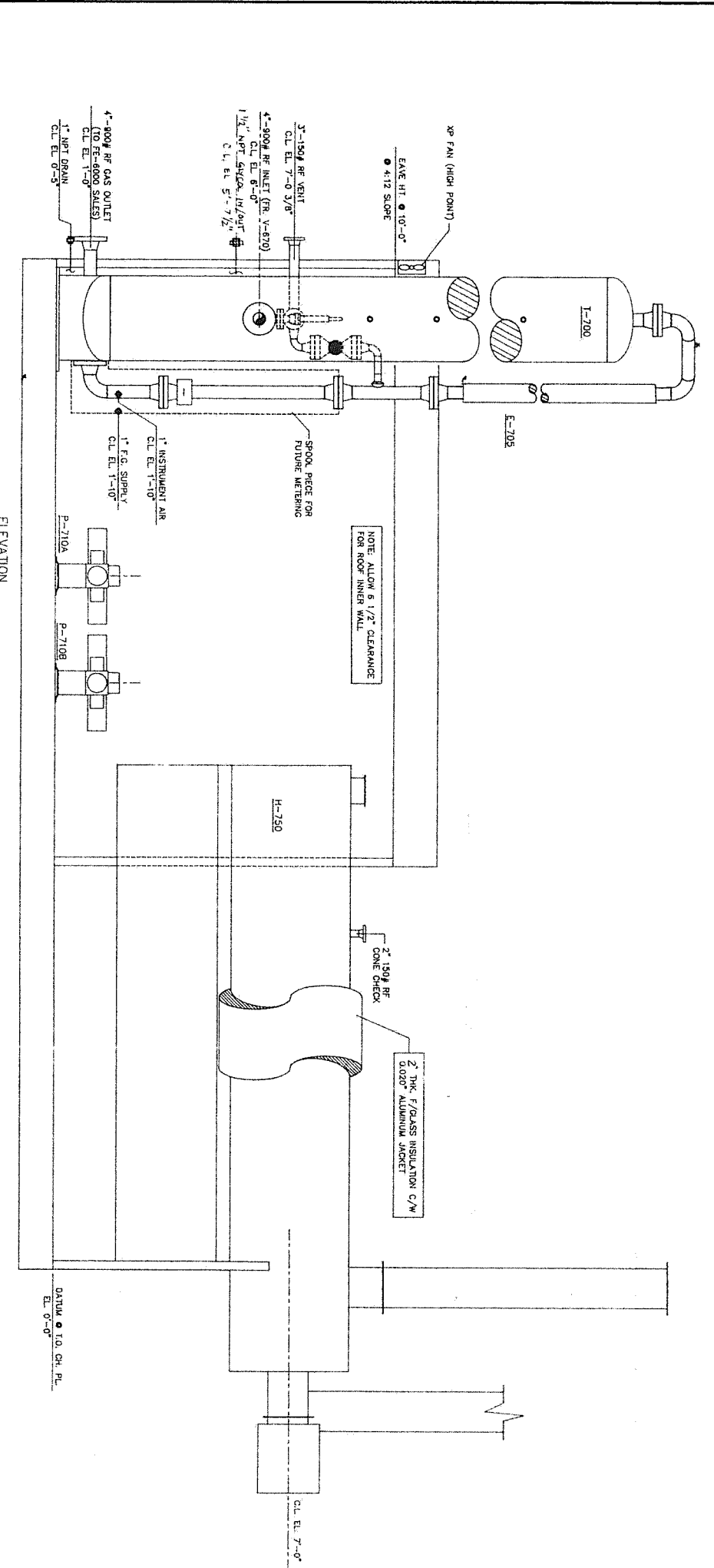
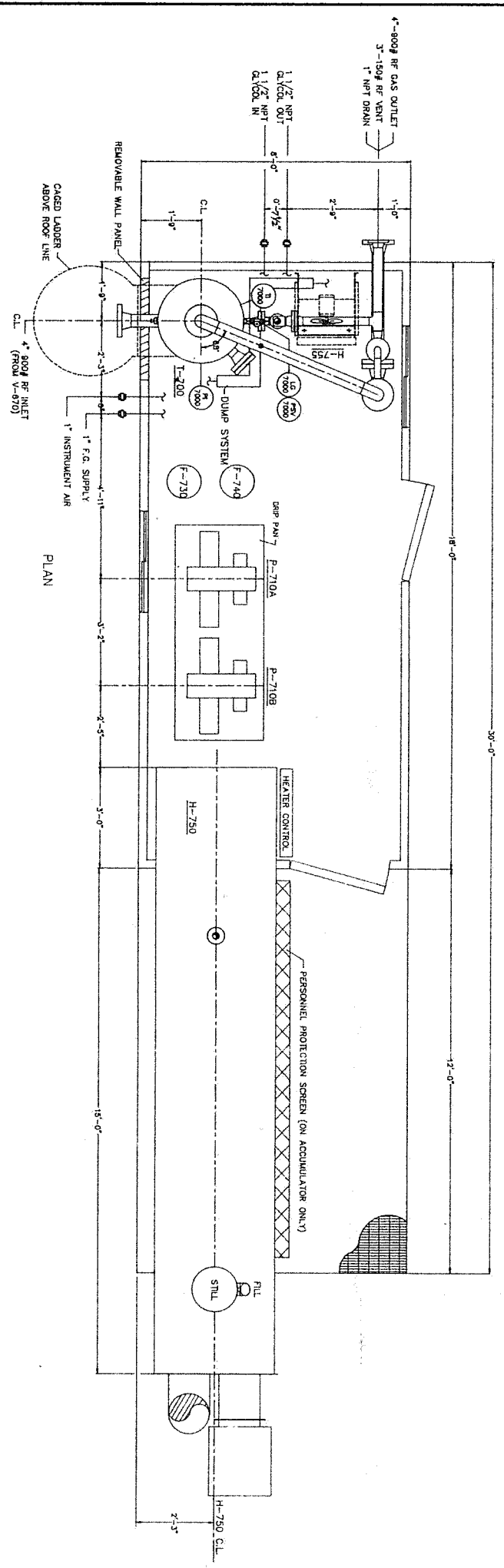


CLIENT	PROJECT	TITLE	SCALE
Delphi Jobs 33201-20021	Delphi Jobs 33201-20021	OPSCO STANDARD REBOILER	20/16



DET. 3: COIL ASSEMBLY





- GENERAL NOTES:**
- No of units req'd: One(1)
  - Materials shown for one unit only
  - Welded piping to be SA-106B-SMLS. As per Line spec. on Dwg # F-95-2321-482
  - All welded piping to be SA-106B-SMLS
  - All welded piping to be socket welded, Sch. 80
  - All forged steel fittings to be SA-105 & 30400 Fasting
  - Unit to be hydrotested at room temp. at 1.500 ANSI, 2475 psig/300 ANSI, 675 psig/150 ANSI, 427.5 psig/100 ANSI/1500 psig & 150/-20°F, 300 ANSI/450 psig & 150/-20°F, 150 ANSI/285 psig & 100/-20°F
  - Unit Desig'd at 1.500 ANSI/1500 psig & 150/-20°F, 300 ANSI/450 psig & 150/-20°F, 150 ANSI/285 psig & 100/-20°F
  - Finish Paint: DME(1) (See Vendor Data Sheet) (See Dwg 50109)
  - Coat Zinc Chromate
  - Radio-graphy on piping welding to be, as per Line spec. on Dwg # F-95-2321-482
  - Dimensions shown are overall dimensions unless otherwise specified
  - Unless specified otherwise, all projections beyond building wall to be 8"-1"
  - Dimensions may change to reflect customer requests; layout changes, accessibility
  - Standard components of Dwg supplied components
  - Standard components of Dwg supplied components
  - XP electrical hood-up of Catalytic Heaters: NO
  - Other Electrical Work: No
  - All bleed ports with bleed ports (excluding diplegs & tubing) to be 3/8" 316 Stainless Steel tubing c/w Cadmium plated CS Smeiglock fittings & 316 SS Ferrules
  - Tubing Details: 3/8" 316 Stainless Steel tubing c/w Cadmium plated CS Smeiglock fittings & 316 SS Ferrules

**SKID**  
 DPCO Standard skid c/w 3/16" checker plate within building limits.  
 Under-skid insulation to be 1" 3" thick, Std. Urethane Insulation.  
 Size: 18'-0" wide x 30'-0" long

**BUILDING:**  
 8'-0" wide x 18'-0" long DPCO STANDARD building with:  
 ROOF: TYPE: Gable  
 RIDGE: Pre-painted Galv. EAVE HEIGHTS: 10'-0" & 4:12 slope  
 INTERIOR: 24" B Aluminum (white)  
 INSULATION: R-15, Batt type Fiberglass on walls, R20 on roof. VAP: BARRIER: 4 mil.  
 DOORS: 12'0" x 20'0" double glazed c/w half screen  
 check chain & lockset.  
 WINDOW: 12'0" x 20'0" double glazed c/w half screen  
 check chain & lockset.  
 DOOR WINDOW: Yes, IJC type  
 CANNOPY: Yes, IJC type

**LUMBER:** Four(4) 6" IJC's c/w 316's & screen, SIZE: 12" x 12"  
 RIDGE VENT: Included  
 EAVE RAKES: Yes  
 EAVESTROUOH: Yes

REVISIONS		REVISIONS		ENGINEERS RECORD		DATE	
No.	DATE	BY	APP.	No.	DATE	BY	APP.
0	1/23/94						
1	1/23/94						
2	10/2/94						

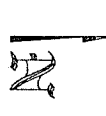
  

ENGINEERS RECORD		DATE
DRAWN BY	CHECKED BY	DATE
DS	DS	1/23/94
APPRO. BY	ISSUED TO	
	SHOP	

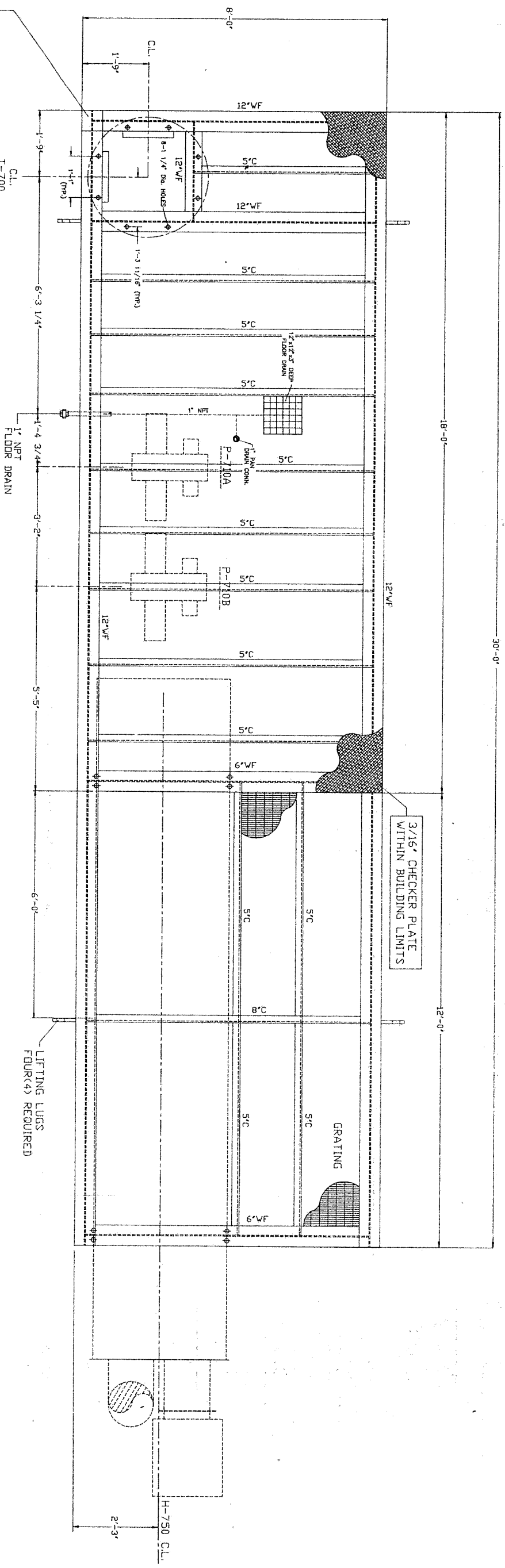
CLIENT	PETROSTAR PETROLEUM
	C/O GEMINI ENGINEERING LTD.
PROJECT	TALBOT LAKE DEHYDRATION "2" PACKAGE
TITLE	LAYOUT DIAGRAM
DATE	JAN-95-2321
DWG. NO.	1-95-2321-1413
REV.	

THIS DRAWING IS THE PROPERTY OF OREGON INDUSTRIES LTD. AND LOANED TO THE RECIPIENT FOR HIS CONFIDENTIAL USE ONLY. IT IS NOT TO BE REPRODUCED, COPIED, OR TRANSMITTED IN ANY FORM OR BY ANY MEANS, ELECTRONIC OR MECHANICAL, INCLUDING PHOTOCOPYING, RECORDING, OR BY ANY INFORMATION STORAGE AND RETRIEVAL SYSTEM, WITHOUT THE WRITTEN PERMISSION OF OREGON INDUSTRIES LTD.



3" THK. STD. GRADE URETHANE  
UNDERSKID INSULATION REQ'D.

PLAN



LIFTING LUGS  
FOUR(4) REQUIRED

3/16\"/>

GRATING

NO. DATE		REVISIONS		ENGINEER'S RECORD		DATE	
0	NOV 23 1995	FBR APPROVAL	DG	DRAWN BY	DG	NOV 23 1995	
1	DEC 12 1995	REVISED AS PER CUST. H/V	DG	CHECKED BY			
2	JAN 28 1996	ISSUED FOR CONSTRUCTION	DG	APPROV. BY			
		AS - BUILT		ISSUED TO	SHOP		

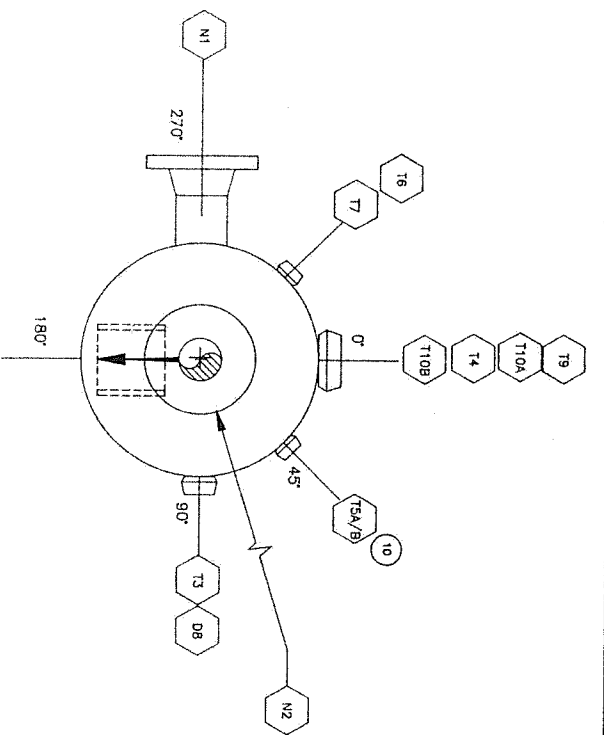
  

CLIENT		PROJECT		TITLE	
PETROSTAR PETROLEUMS INC.		TALBOT LAKE DEHYDRATION '2' UNIT		SKID LAYOUT	
C/D GEMINI ENGINEERING LIMITED					
SCALE	JOB NO.	DRG. NO.			
1/8"	JH-95-2321	S-95-2321-1032			
		REV.			
		2			

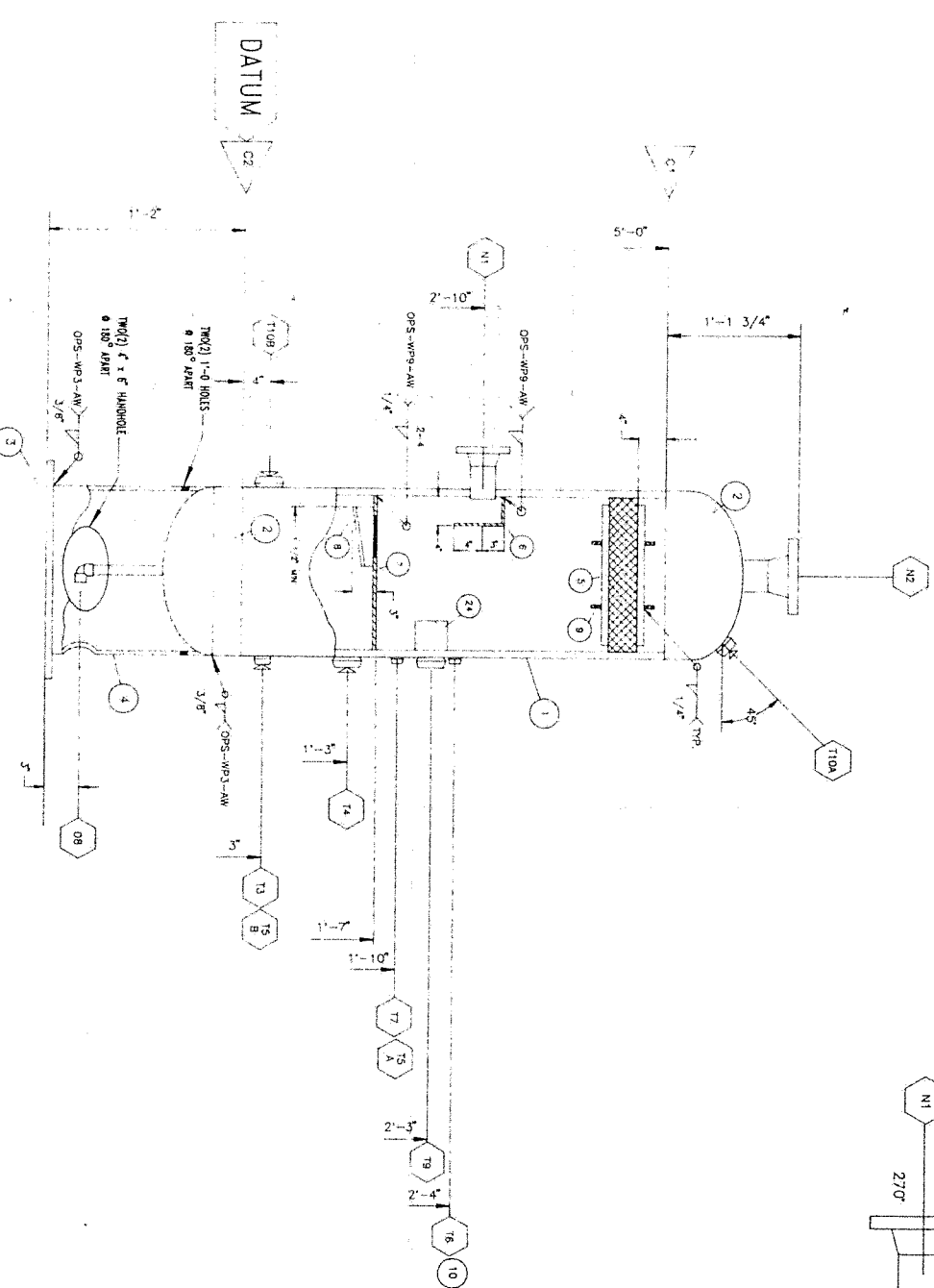
THIS DRAWING IS THE PROPERTY OF GSP/COV2 INDUSTRIES LTD. IT IS TO BE USED ONLY IN CONSIDERATION OF THE TERMS OF THE DRAWING CONTRACT. THE RECIPIENT PROMISES AND AGREES THAT IT SHALL NOT BE USED IN ANY MANNER DETRIMENTAL TO THE INTEREST OF GSP/COV2 INDUSTRIES LTD. WITHOUT THE WRITTEN PERMISSION OF GSP/COV2 INDUSTRIES LTD.



1	CIRCS & MAIN SEAMS	2	T.O.L. & S.O.L.	3	NOZZLE	4	COUPLING	5	OTHER DRAIN	6	NOZZLE C/W REPAIR	7	NOZZLE C/W REPAIR	8	TACK WELD	9	TAPER BORE NOZZLE	10	RFSO	11	COIL	12	STRAIGHT BORE NOZZLE
---	--------------------	---	-----------------	---	--------	---	----------	---	-------------	---	-------------------	---	-------------------	---	-----------	---	-------------------	----	------	----	------	----	----------------------



ORIENTATION



ELEVATION

ITEM	REQ'D	SIZE	TYPE	RATING	SCR.	MAT'L SPEC.	DESCRIPTION
1	1	16" O.D.	PIPE	150#	80	SA-106-B	16" O.D. X 9'-0" L.G. PIPE
2	2	16" O.D.	FORMED PLATE	150#	80	SA-333-B	16" O.D. X 0.25" THK. FORMED PLATE
3	1	24" O.D.	PLATE	150#	80	SA-333-B	24" O.D. X 0.25" THK. FORMED PLATE
4	1	16" O.D.	SPW			SA-333-B	SPW BASKET PLATE (STD. 130)
5	1	13" O.D.	SPW			SA-333-B	SPW PIPE SKIRT (STD. 130)
6	1	3/16" THK.	PLATE	150#	80	SA-36	SKIRT 4" THK. (96" O.D.)
7	1	3/16" THK.	PLATE	150#	80	SA-36	INLET DIVERTER
8	1	3/16" THK.	PLATE	150#	80	SA-36	WELT / FLANG BOND (STD. 110)
9	AS REQ'D	3/8" THK.	PLATE	150#	80	SA-36	STIFFENERS
10	1	6" X 4"	BRN	150#	80	SA-106-B	MANIFOLD BRACKET
11	2	3"	PIPE	150#	80	SA-106-B	MANIFOLD BRACKET
12	AS REQ'D	3"	PIPE	150#	80	SA-106-B	SKEL PIPE
13	1	1"	TOL.	3000#		SA-105	TOL. ON 20"
14	3	3/4"	TOL.	3000#		SA-105	TOL. ON 20"
15	1	1/2"	TOL.	3000#		SA-105	TOL. ON 20"
16	1	2"	TOL.	3000#		SA-105	TOL. ON 20"
17	AS REQ'D	1"	PIPE	150#	160	SA-106-B	SKEL SHAIN PIPE
18	1	1"	NPT	3000#		SA-105	90 DEG. ELBOW
19	1	1.5"	TOL.	3000#		SA-105	TOL. ON FLAT
20	1	1.5"	TOL.	3000#		SA-105	TOL. ON 8"
21	2	2"	NPT	3000		SA-105	HEX. HEAD PLUG
22	2	1.5"	NPT	3000		SA-105	HEX. HEAD PLUG
23	1	1"	NPT	3000		SA-105	HEX. HEAD PLUG
24	AS REQ'D	3"	PIPE	150#	STD	SA-106-B	SKEL PIPE

MARK	SIZE	RATING	TYPE	SERVICE	W.D.	W41	W42	W43	H	EXT.	TRBL
N1	3"	150#	RFN	GAS INLET	12.5	3/8"		3/8"	6"	11.12	
N2	3"	150#	RFN	GAS INLET	12.5	3/8"		3/8"	6"	11.12	
N3	1"	3000#	TOL.	HC OUTLET C/W PLUG	2	MIN				13.23	
N4	2"	3000#	TOL.	HC LC C/W PLUG	2	MIN				15.21	
N5	AS 3/4"	3000#	TOL.	HC LEVEL GAUGE	2	MIN				14	
N6	1/2"	3000#	TOL.	PRESSURE INDICATOR	2	MIN				15	
N7	3/4"	3000#	TOL.	TEMPERATURE INDICATOR	2	MIN				14	
N8	1"	3000#	NPT	DRAIN	13.5	3/8"		3/8"	3"	17.18	
N9	2"	3000#	TOL.	HC SO	2	MIN				16	
N10	1.5"	3000#	TOL.	INSP. C/W PLUG	2	MIN				19.22	
N11	1.5"	3000#	TOL.	INSP. C/W PLUG	2	MIN				20.22	

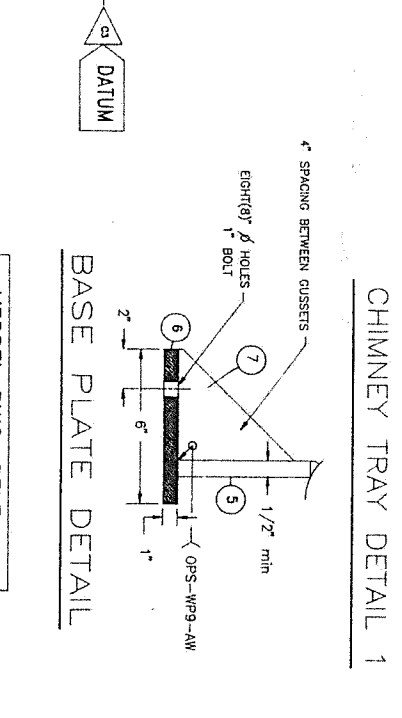
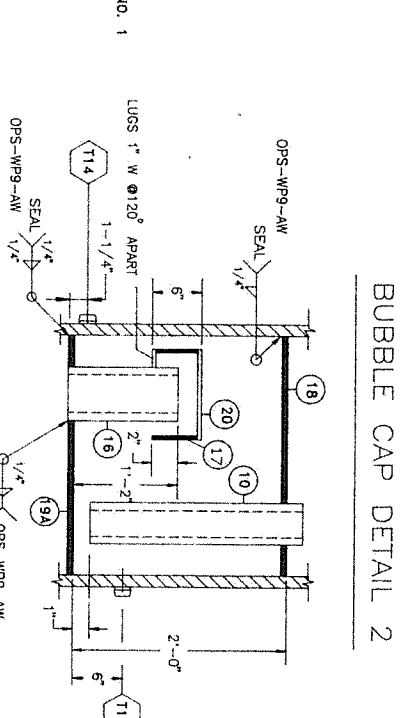
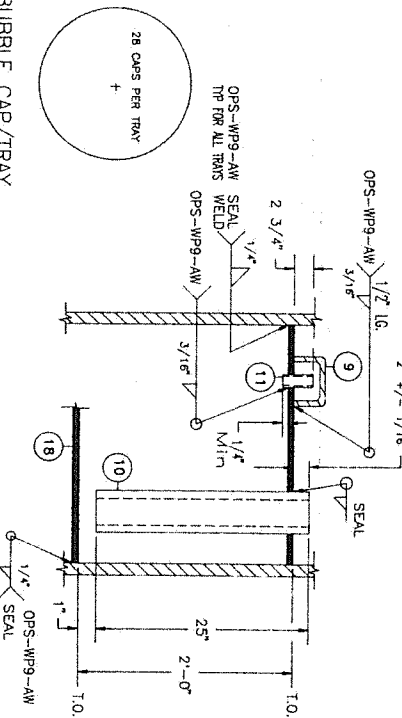
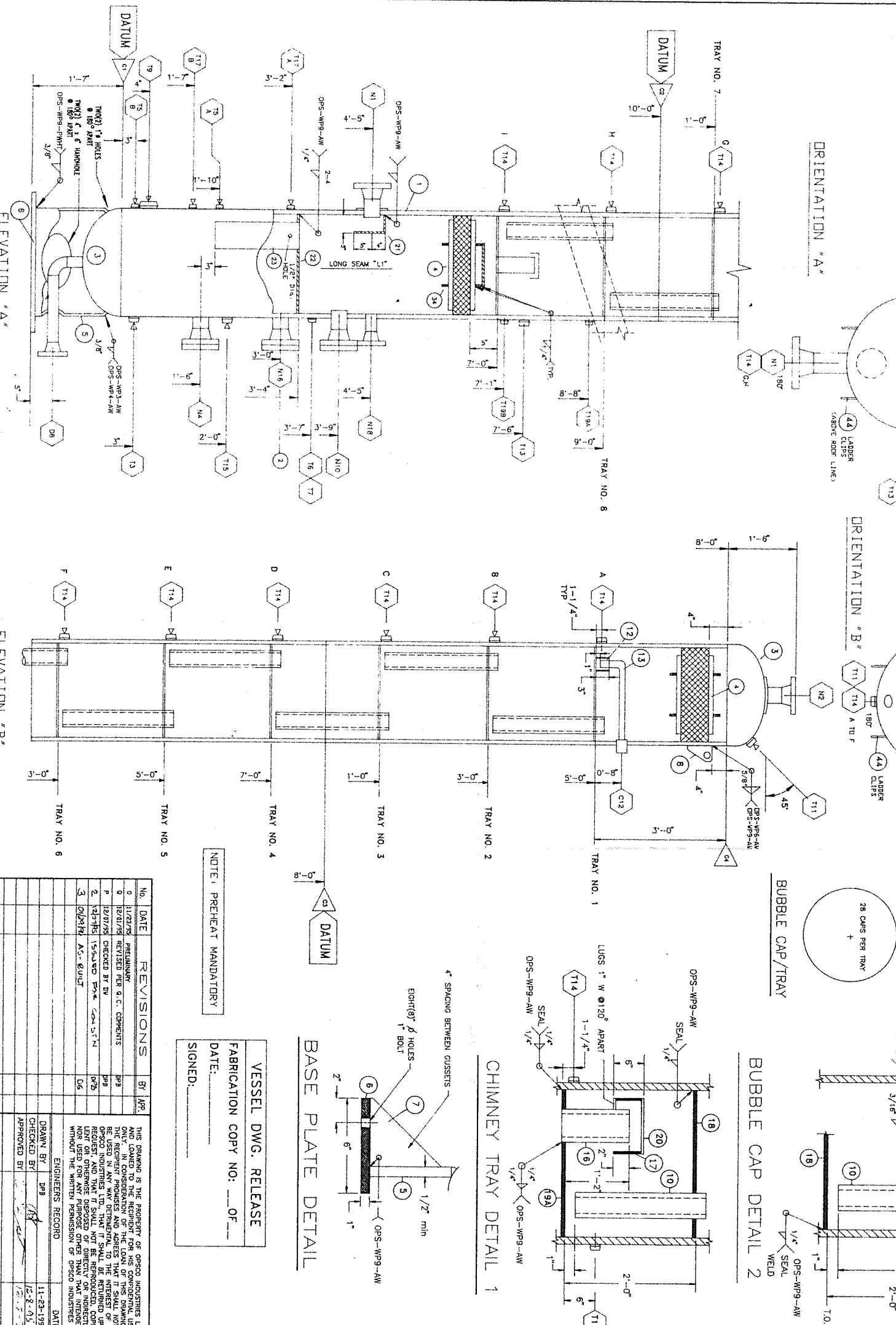
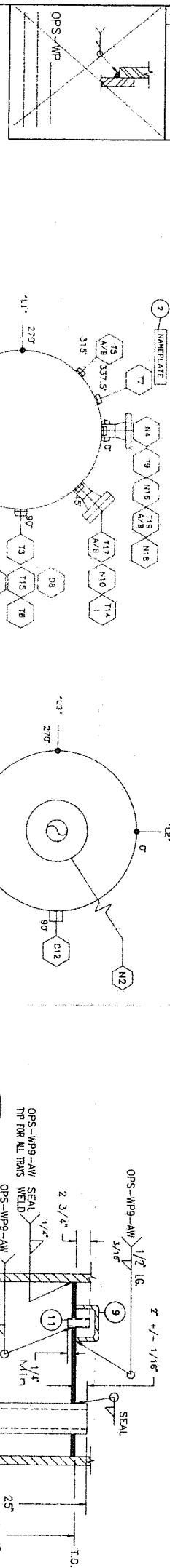
DESIGN & FABRICATION:	VESSEL TO BE DESIGNED AND CONSTRUCTED IN ACCORDANCE WITH ASME BOILER AND PRESSURE VESSEL CODE SECTION VIII DIV. 1. Code Year: 1992
NOTE:	-20% ASMEPT FROM IMPACT TESTING AS PER UG-26(f)
MAINT. TEMP:	300
MAX. TEMP:	350
MIN. TEMP:	0
HYDROTEST PRESS:	1.5 X DESIGN PRESS
DESIGN PRESS:	150#
WIND LOAD:	15 PSF
SEISMIC LOAD:	AS PER CODE
INSULATION:	AS PER CODE
FINISH:	AS PER CODE
PAINT:	AS PER CODE
WELDING PROC:	AS PER CODE
WELDING PROC. NO.:	AS PER CODE
WELDING PROC. CODE:	AS PER CODE
WELDING PROC. QUAL. NO.:	AS PER CODE
WELDING PROC. QUAL. CODE:	AS PER CODE
WELDING PROC. QUAL. NO.:	AS PER CODE
WELDING PROC. QUAL. CODE:	AS PER CODE
WELDING PROC. QUAL. NO.:	AS PER CODE
WELDING PROC. QUAL. CODE:	AS PER CODE
WELDING PROC. QUAL. NO.:	AS PER CODE
WELDING PROC. QUAL. CODE:	AS PER CODE

VESSEL DWG. RELEASE  
 FABRICATION COPY NO. OF  
 DATE: 11/28/75  
 SIGNED: [Signature]

No.	DATE	REVISIONS	BY	APP.
0	11/28/75	PRELIMINARY	DBB	
1	11/28/75	REVISED PER D.C. W/L CHECKED	DBB	
2	12/1/75	ISSUED AS PER D.C. W/L CHECKED	DBB	
3	12/1/75	ISSUED AS PER D.C. W/L CHECKED	DBB	

CLIENT: PETROSTAR PETROLEUMS, INC.  
 PROJECT: TALBOT LAKE COMPRESSOR STATION  
 DEHYDRATION '2'  
 TITLE: 16" O.D. X 5'-0" S/S 2-PH. VERT. F.G.A.S. SEP.  
 SCALE: 1/8" = 1'-0"  
 DWG. NO.: JN-95-2320  
 SHEET NO.: 2

1	CHGS & MAIN SEAMS	2	T.O.L. & S.O.L.	3	NOZZLE	4	COUPLING	5	OTHER DRAIN	6	NOZZLE C/W REPAID	7	NOZZLE C/W REPAID	8	TACK WELD	9	TAPER BORE NOZZLE	10	RFSSO	11	COIL	12	STRAIGHT BORE NOZZLE
---	-------------------	---	-----------------	---	--------	---	----------	---	-------------	---	-------------------	---	-------------------	---	-----------	---	-------------------	----	-------	----	------	----	----------------------



NOTE: PREHEAT MANDATORY

NO.	DATE	REVISIONS	BY	APP.
0	11/27/75	PRELIMINARY	DPB	
1	12/01/75	REVISED PER O.C. COMMENTS	DPB	
2	12/01/75	CHECKED BY DW	DPB	
3	01/21/76	AS-DRUM	OC	

ITEM	REQ'D	SIZE	TYPE	RATING	SCH.	MAT'L SPEC.	DESCRIPTION
1	1	30" O.D.	ROLLED PLATE			SA-516-70	30" O.D. x 54'-0" L x 1.500" MIN THK. (3 PLYS PER 10', 8")
2	1	6' x 4'	FORMED PLATE			SA-36	MANUFACTURE BRACKET (STOCK)
3	2	30" O.D.	FORMED PLATE			SA-516-70	30" O.D. x 1.500" THK. (3 PLYS PER 10', 8")
4	2	27" O.D.	FORMED PLATE			SA-516-70	27" O.D. x 1.500" THK. (3 PLYS PER 10', 8")
5	1	30" O.D.	PLATE			SA-516-70	30" O.D. x 1.500" THK. (3 PLYS PER 10', 8")
6	1	30" O.D.	PLATE			SA-516-70	30" O.D. x 1.500" THK. (3 PLYS PER 10', 8")
7	16	AS REQ'D	PLATE			SA-105	BRACKET CAPS
8	2	1" THK. x 3/4" x 5 1/4"	PLATE			SA-105	BRACKET CAPS
9	224	STD	ENR			SA-105	DOWNCOMER PIPE
10	AS REQ'D	1 1/4"	ENR			SA-105	RISER PIPE
11	AS REQ'D	1 1/4"	ENR			SA-105	RISER PIPE
12	AS REQ'D	1"	ENR			SA-105	RISER PIPE
13	AS REQ'D	1"	ENR			SA-105	RISER PIPE
14	2	4"	ENR			SA-105	ASST FLANGES
15	AS REQ'D	4"	ENR			SA-105	ASST FLANGES
16	AS REQ'D	4"	ENR			SA-105	ASST FLANGES
17	AS REQ'D	8"	ENR			SA-105	ASST FLANGES
18	AS REQ'D	5/16" THK	PLATE			SA-36	ROBIE CAP TRANS
19	AS REQ'D	3/8" THK	PLATE			SA-36	CHIMNEY TRAY PLATE
20	AS REQ'D	3/8" THK	PLATE			SA-36	DEFLECTION PLATE
21	AS REQ'D	5/16" THK	PLATE			SA-36	CHIMNEY TRAY PLATE
22	AS REQ'D	5/16" THK	PLATE			SA-36	INLET DIVERTERS
23	AS REQ'D	5/16" THK	PLATE			SA-36	SM'S PIPE
24	AS REQ'D	1 1/2"	ENR			SA-105	SM'S PIPE
25	AS REQ'D	1 1/2"	ENR			SA-105	SM'S PIPE
26	AS REQ'D	1 1/2"	ENR			SA-105	SM'S PIPE
27	AS REQ'D	1 1/2"	ENR			SA-105	SM'S PIPE
28	AS REQ'D	1 1/2"	ENR			SA-105	SM'S PIPE
29	AS REQ'D	1 1/2"	ENR			SA-105	SM'S PIPE
30	AS REQ'D	1 1/2"	ENR			SA-105	SM'S PIPE
31	AS REQ'D	1 1/2"	ENR			SA-105	SM'S PIPE
32	AS REQ'D	1 1/2"	ENR			SA-105	SM'S PIPE
33	AS REQ'D	1 1/2"	ENR			SA-105	SM'S PIPE
34	AS REQ'D	1 1/2"	ENR			SA-105	SM'S PIPE
35	AS REQ'D	1 1/2"	ENR			SA-105	SM'S PIPE
36	AS REQ'D	1 1/2"	ENR			SA-105	SM'S PIPE
37	AS REQ'D	1 1/2"	ENR			SA-105	SM'S PIPE
38	AS REQ'D	1 1/2"	ENR			SA-105	SM'S PIPE
39	AS REQ'D	1 1/2"	ENR			SA-105	SM'S PIPE
40	AS REQ'D	1 1/2"	ENR			SA-105	SM'S PIPE
41	AS REQ'D	1 1/2"	ENR			SA-105	SM'S PIPE
42	AS REQ'D	1 1/2"	ENR			SA-105	SM'S PIPE
43	AS REQ'D	1 1/2"	ENR			SA-105	SM'S PIPE
44	AS REQ'D	1 1/2"	ENR			SA-105	SM'S PIPE
45	AS REQ'D	1 1/2"	ENR			SA-105	SM'S PIPE

DESIGN DATA

VESSEL TO BE DESIGNED AND CONSTRUCTED IN ACCORDANCE WITH ASME SECTION VIII, DIVISION 1, AND PRESSURE VESSEL CODE SECTION VIII, DIVISION 1.

DESIGN CODE: SA-105N

DESIGNER: PETROSTAR PETROLEUMS INC.

CHECKED BY: DPB

APPROVED BY: DPB

ISSUED TO: SHOP

DATE: 11-23-1995

