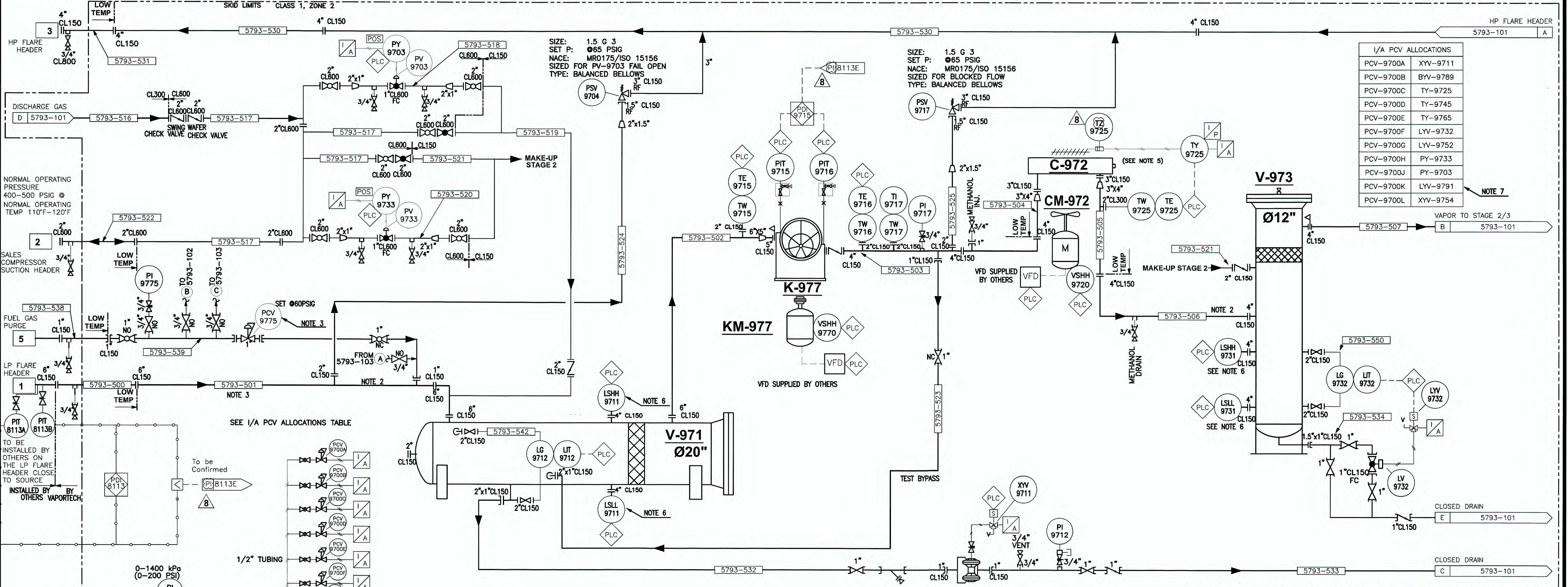
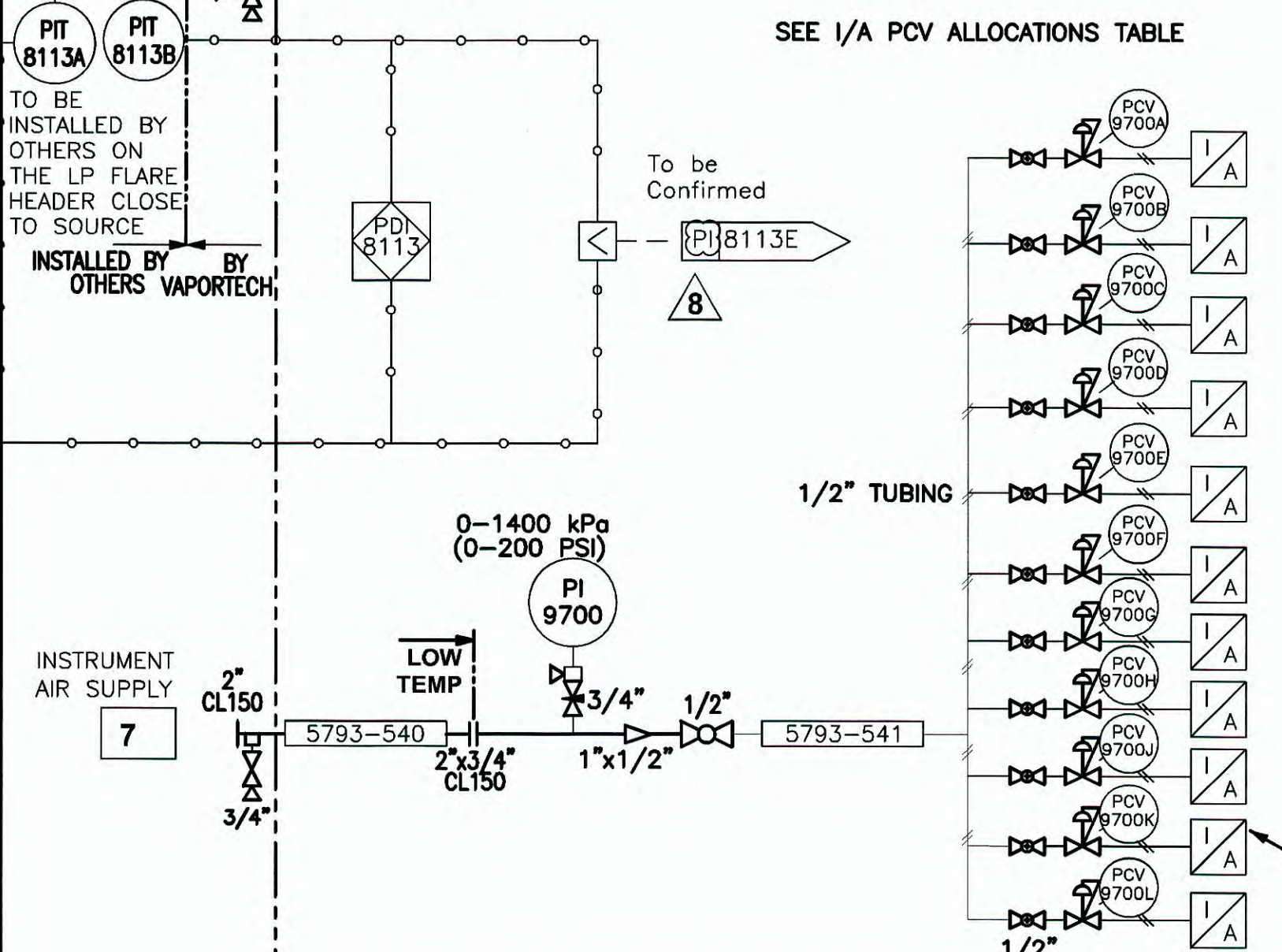


V-971 SUCTION SCRUBBER H20-S74 CRN DWG #: H20-S74 CRN DWG #: TBC MAWP: 150 PSI @ 300°F CRN: TBC 20" OD, 90" SS	KM-977 COMPRESSOR MOTOR TECO WESTINGHOUSE 100HP / 1200RPM / 575V / 3PH / 60HZ 444T FRAME MODEL NO: APH10006TE5-841 IEEE-841	C-972 STAGE 1 COOLER TOTAL SURF. AREA: 1229sqft BARE SURF: 77sqft DUTY: 293,922.6 Btu/hour DESIGN: 200 psi @ 365°F MDMT: -49°F DRIVER HP: 5HP (ONE FOR ALL STAGES) TRIM: SA-516-70N (Header) / SA-350-LF2 Class 1 (Plugs) / SA249 (WLD316L) (Tubes) / SA350-LF2 & SA333 (Nozzles)	CM-972 GAS COOLER MOTOR 5HP / 1200RPM / 575V / 3PH / 60HZ TEFC IEEE841 INVERTER DUTY	V-973 INTERSTAGE SCRUBBER V12-S37 DWG #: V12-S37 CRN DWG #: TBC MAWP: 260 PSI @ 200°F CRN: TBC 12.75" OD, 65" SS	P-971 CONDENSATE PUMP BRUN S1F PNEUMATIC DIAPHRAGM PUMP BODY: ALUMINIUM DIAPHRAGM: SANTOPRENE FLOW: <15GPM	K-977 VRU STAGE-1 COMPRESSOR (RO-FLO 10G) RATED CAPACITY: 164.2 (@450RPM); 576 MSCFD 1129RPM; 673.1 (@1300RPM) SUCTION PRESSURE: 0.0psig; DISCHARGE PRESSURE: 45psig PRESSURE RATIO: 4.36 M.W.: 19.97 MOTOR HP: 100HP MDMT: -22°F TRIM: ASTM A395 (CASING) / SAE 1144 STEEL (ONE PIECE ROTOR & SHAFT) / LAMINATED KEVLAR CLOTH & PHENOLIC RESIN BLADES VITON ELASTOMERS
---	--	--	--	---	---	--



I/A PCV ALLOCATIONS	
PCV-9700A	XYV-9711
PCV-9700B	BYV-9789
PCV-9700C	TY-9725
PCV-9700D	TY-9745
PCV-9700E	TY-9765
PCV-9700F	LYV-9732
PCV-9700G	LYV-9752
PCV-9700H	PY-9733
PCV-9700J	PY-9703
PCV-9700K	LYV-9791
PCV-9700L	XYV-9754



SOLARIS MANAGEMENT CONSULTANTS INC.
 Project: VRU
 Date: 5/12/13
 By: [Signature]
 Title: [Title]
 ACCEPTANCE OF THIS DOCUMENT BY SOLARIS DOES NOT RELIEVE THE VENDOR OF ANY RESPONSIBILITY UNDER THE TERMS AND CONDITIONS OF THE APPLICABLE CONTRACT OR PURCHASE ORDER.

Received
 APR 25 2013
 SMCI-DC

DRAWING APPROVAL	SIGN	DATE
ENGINEERING MANAGER		
PRODUCTION MANAGER		
QC (DRAWING CONFORMANCE)		
QC (FINAL SIGN OFF)		



ENCANA CORPORATION
 C/O: SOLARIS Management Consultants Inc

VAPOR RECOVERY COMPRESSION PACKAGE
 VRU M-970, Saturn Phase 3 Expansion
 09-27-079-17 W6M

P&ID - Stage 1

DRAWN BY	MM/DD/YY	DRAWING NO.	REV
NC	06/02/12	5793-100	8
PO #:	EN11-01434	TAG NO.	M-970

GENERAL NOTES	
1. REFER TO DRAWING 5793-102 FOR LUBE AND JW P&ID	
2. DO NOT POCKET	
3. TUBE VENT TO SAFE LOCATION	
4.	
5. 3/4" THERMOWELL ON HEADER PLACED OPPOSITE OUTLET.	
6. 2" NPT LINC LEVEL SWITCH (L-471-41-02) c/w 4" #150 CS FLANGE	
7. XYV-9791 IS LOCATED ON 5793-103, SCAVENGER LUBE SYSTEM.	

NOZZLE DATA				
REF	FUNCTION	SIZE & RATING	PROJ.	TEMP (°F)
1	LP FLARE HEADER INLET	6" CL150	12"	71.1
2	MAKE-UP / DISCHARGE GAS HEADER	2" CL600	12"	400
3	HP FLARE	4" CL150	12"	
4	DRAIN	2" CL150	12"	TBD
5	PURGE (SWEET FUEL GAS)	1" CL150	12"	165
7	INSTRUMENT AIR	2" CL150	12"	

REVISIONS				
NO.	DESCRIPTION	DATE	BY	CHK'D
8	MARKED UP AS NOTED	04/25/13	DE	JVM
7	MARKED UP AS NOTED	03/11/13	NC	DE
6	MARKED UP AS NOTED	11/23/12	NC	JVM
5	CLIENT MARK-UPS INCORPORATED	10/26/12	SC	JVM
4	CLIENT MARK-UPS INCORPORATED	09/20/12	SC	JVM
3	CLIENT MARK-UPS INCORPORATED	08/22/12	SC	JVM
REV	DESCRIPTION	MM/DD/YY	BY	CHK'D

THIS DRAWING AND ANY DESIGNS SHOWN ARE THE CONFIDENTIAL PROPERTY OF VAPORTECH ENERGY SERVICES INC. AND MUST NOT BE USED, COPIED OR COMMUNICATED IN ANY FORM WITHOUT THE EXPRESS WRITTEN CONSENT OF VAPORTECH.
 2012 VAPORTECH ENERGY SERVICES.