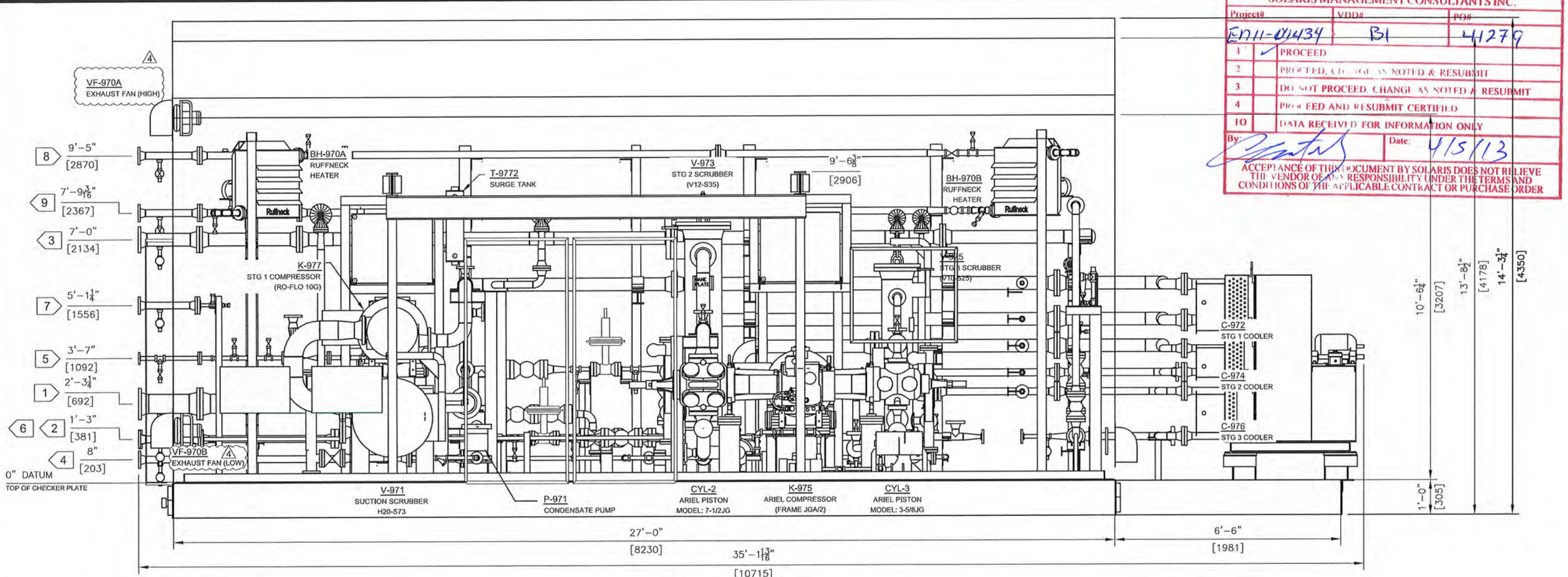


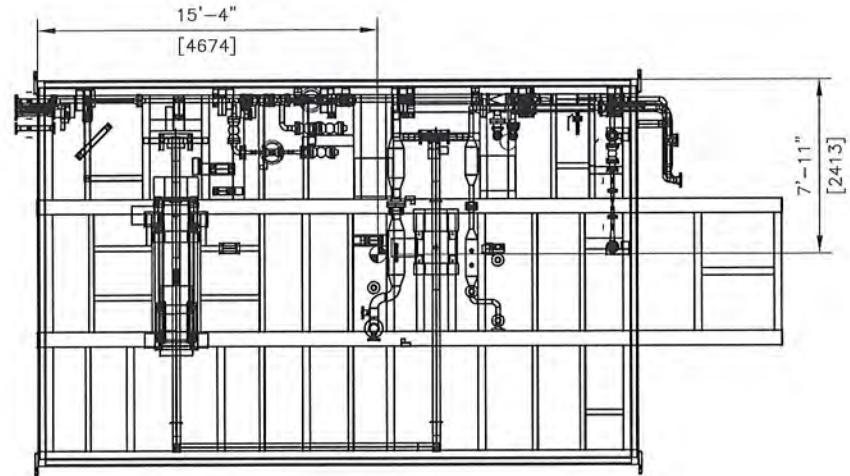
SOLARIS MANAGEMENT CONSULTANTS INC.

Project#	VDD#	PO#
EN11-01434	B1	41279
1	PROCEED	
2	PROCEED, CHANGES AS NOTED & RESUBMIT	
3	DO NOT PROCEED, CHANGE AS NOTED & RESUBMIT	
4	PROCEED AND RESUBMIT CERTIFIED	
10	DATA RECEIVED FOR INFORMATION ONLY	
By:	Date:	
<i>[Signature]</i>	4/15/13	

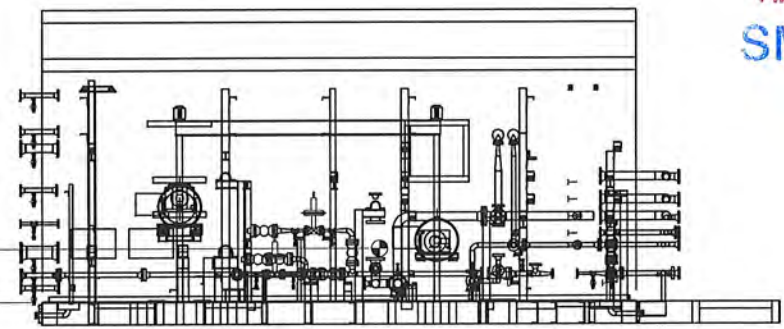
ACCEPTANCE OF THIS DOCUMENT BY SOLARIS DOES NOT RELIEVE THE VENDOR OF ANY RESPONSIBILITY UNDER THE TERMS AND CONDITIONS OF THE APPLICABLE CONTRACT OR PURCHASE ORDER



LOOKING NORTH  
SCALE: 1:35



CENTER OF GRAVITY  
PLAN VIEW



CENTER OF GRAVITY  
ELEVATION

Received  
MAR 27 2013  
SMCI-DC

DRAWING APPROVAL	ENGINEERING MANAGER	SIGN	DATE
	PRODUCTION MANAGER		
	QC (DRAWING CONFORMANCE)		
QC (FINAL SIGN OFF)			



ENCANA CORPORATION  
C/O: SOLARIS MANAGEMENT CONSULTANTS INC

VAPOR RECOVERY COMPRESSION UNIT  
VRU M-970, SATURN PHASE 3 EXPANSION  
09-27-079-17 W6M

G.A. - ELEVATION

GENERAL NOTES  
1. JUNCTION BOXES & PLC REMOVED FOR CLARITY

NOZZLE DATA				REVISIONS			
REF	FUNCTION	SIZE & RATING	PROJ.	REF	DESCRIPTION	DATE	BY
1	LP FLARE HEADER INLET	6" CL150	12"	9	HEATING GLYCOL (RETURN)		
2	MAKE-UP / DISCHARGE GAS HEADER	2" CL600	12"				
3	HP FLARE	4" CL150	12"				
4	DRAIN	2" CL150	12"	4	CHANGED AS NOTED	03/26/13	SJ JVM
5	PURGE (SWEET FUEL GAS)	1" CL150	12"	3	CHANGED AS NOTED	03/01/13	SC JVM
6	CLOSED DRAIN HEADER	2" CL150	12"	2	CHANGED AS NOTED	01/22/13	BW JVM
7	INSTRUMENT AIR	2" CL150	12"	1	CHANGED AS NOTED	08/31/12	BW JVM
8	HEATING GLYCOL (SUPPLY)	2" CL150	12"	0	ISSUED FOR APPROVAL	07/16/12	BW JVM
				REV	DESCRIPTION	MM/DD/YY	BY CHK'D

THIS DRAWING AND ANY DESIGNS SHOWN ARE THE CONFIDENTIAL PROPERTY OF VAPORTECH ENERGY SERVICES INC. AND MUST NOT BE USED, COPIED OR COMMUNICATED IN ANY FORM WITHOUT THE EXPRESS WRITTEN CONSENT OF VAPORTECH. 2012 VAPORTECH ENERGY SERVICES.

DRAWN BY	MM/DD/YY	DRAWING NO.	REV
BW	07/16/12	5793-201	4
CLIENT DOCUMENT CODE	PURCHASE ORDER NO.	TAG NO.	
N/A	EN11-01434	M-970	