



VAPORTECH
M-970 SKID LAYOUT



Project: Saturn Ph3 Compressor Station
Location: 09-27-79-17 W6M

Job No. EN11-01434
Drawing No. 5793-300

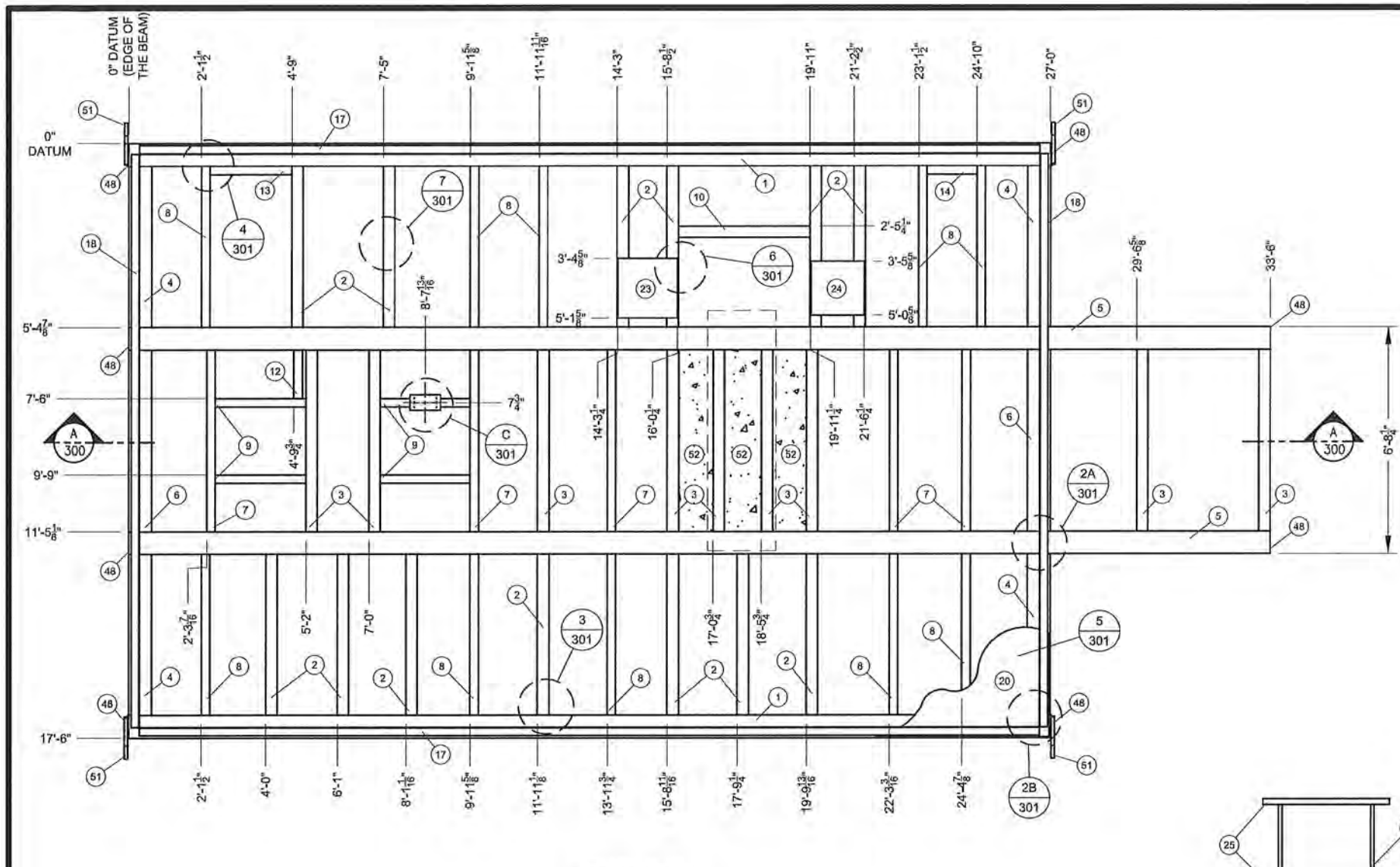
Rev:	Date: dd/mm/yy	Status:	PO #	Vendor
0	30/08/12	Issued for Construction	41279	VAPORTECH

ENCANA CORPORATION
PEACE COUNTRY BUSINESS UNIT
SATURN PH 3 COMPRESSOR STATION

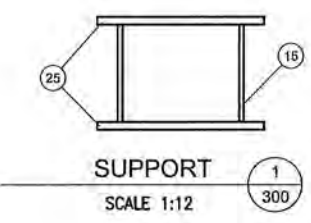
VAPORTECH
M-970 SKID LAYOUT

Received
AUG 30 2012
SMCI-DC

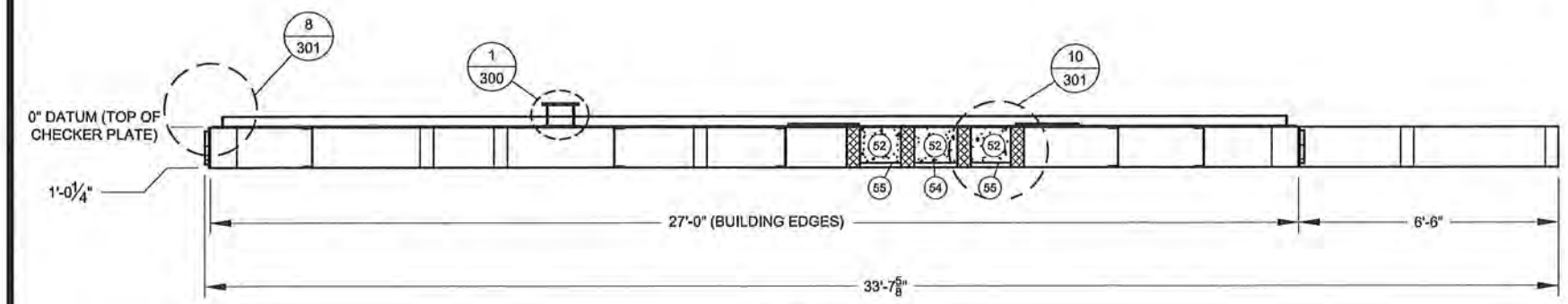
SOLARIS MANAGEMENT CONSULTANTS INC.		
Project #	VDD #	PO #
EN11-01434		41279
1	PROCEED & RESUBMIT CERTIFIED	
2	PROCEED, CHANGE AS NOTED & RESUBMIT CERTIFIED	
3	DO NOT PROCEED, CHANGE AS NOTED & RESUBMIT	
I/O	DATA REQUIRED FOR INFORMATION ONLY	
By: <i>[Signature]</i>	Date: 9/6/12	
ACCEPTANCE OF THIS DOCUMENT BY SOLARIS DOES NOT RELIEVE THE VENDOR OF ANY RESPONSIBILITY UNDER THE TERMS AND CONDITIONS OF THE APPLICABLE CONTRACT OR PURCHASE ORDER		



PLAN VIEW
SCALE 1:50



SUPPORT
SCALE 1:12



SECTION
SCALE 1:50

BILL OF MATERIALS							
ITEM	QTY	DESCRIPTION	SHAPE (IN)	LENGTH (IN)	MATERIAL	WEIGHT (LBS)	HEAT NUMBER
1	2	BASE RUNNERS	HSS 12 x 8 x 0.5	324	CSA G40.21 GR. 350W	3373	
2	13	BASE CROSS RUNNERS	HSS 12 x 4 x 0.375	56.875	CSA G40.21 GR. 350W	2322	
3	9	BASE CROSS RUNNERS	HSS 12 x 4 x 0.375	64.25	CSA G40.21 GR. 350W	1816	
4	4	BASE RUNNERS	HSS 12 x 8 x 0.5	56.875	CSA G40.21 GR. 350W	1184	
5	2	BASE RUNNERS	HSS 12 x 8 x 0.5	402	CSA G40.21 GR. 350W	4185	
6	2	BASE RUNNERS	HSS 12 x 8 x 0.5	64.25	CSA G40.21 GR. 350W	669	
7	4	CROSS RUNNERS	C 12 x 20.7	64.25	CSA G40.21 GR. 350W	443	
8	11	CROSS RUNNERS	C 12 x 20.7	56.875	CSA G40.21 GR. 350W	1079	
9	4	CROSS RUNNERS	HSS 3 x 3 x 0.25	31.625	CSA G40.21 GR. 350W	93	
10	1	CROSS RUNNERS	HSS 12 x 4 x 0.375	46.5	CSA G40.21 GR. 350W	146	
12	1	CROSS RUNNERS	L 3 x 3 x 0.25	17.125	CSA G40.21 GR. 300W	7	
13	1	CROSS RUNNERS	L 3 x 3 x 0.1875	28.5	CSA G40.21 GR. 300W	9	
14	1	CROSS RUNNERS	L 3 x 3 x 0.1875	17.563	CSA G40.21 GR. 300W	5	
15	1	VESSEL SUPPORT	W 8x15	6.25	CSA G40.21 GR. 300W	8	
17	2	CONTAINMENT LIP (LENGTH)	L 3 x 3 x 0.1875	316.5	CSA G40.21 GR. 300W	195	
18	2	CONTAINMENT LIP (WIDTH)	L 3 x 3 x 0.1875	202.5	CSA G40.21 GR. 300W	125	
20	3	CHECKER PLATE (BASE)	CHK PL 203.25 x 0.25	69.75	ASTM A786	3015	
20A	3	CHECKER PLATE (BASE)	CHK PL 120 x 0.25	69.75	ASTM A786	1780	
23	1	VESSEL BASE PLATE	PL 21 x 1	21	CSA G40.21 GR. 300W	125	
24	1	VESSEL BASE PLATE	PL 19 x 1	19	CSA G40.21 GR. 300W	102	
25	2	VESSEL BASE PLATE	PL 5.5 x 0.5	10.75	CSA G40.21 GR. 300W	17	
48	8	END CAP	PL 8 x 0.375	12	CSA G40.21 GR. 300W	82	
51	4	LIFTING LUG	130 in ²	1.25	SA38/44W	184	
52	-	CONCRETE 14.5 ft ³	-	-	-	2100	
54	1	CHECKER PLATE (BASE)	CHK PL 64.25 x 0.25	13	ASTM A786	59	
55	2	CHECKER PLATE (BASE)	CHK PL 64.25 x 0.25	12	ASTM A786	109	
					Total (lbs):	23233	
					Total (kg):	10538	

- GENERAL NOTES**
- APPROX COMPLETE PACKAGE WEIGHT: 80 000 lbs
 - INSULATION: 4" CL 1 FIRE RETARDANT SPRAY FOAM BETWEEN ALL MEMBERS UNDER BLDG.
 - SKID TO BE LEAK TESTED FOR 8 HOURS MIN.
 - GROUND FLUSH SKID JOINTS ABOVE ALL PILE LOCATIONS (SEE DWG # 5793-305)
 - CWB TO CSA STANDARD W59
 - ALL STRUCTURAL WELDS ARE TO BE 1/8" FILLET, CONTINUOUS SEAL WELDED UNLESS OTHERWISE NOTED; REFER TO DWG. 5793-301 FOR DETAILS
 - FOR DOOR LOCATIONS AND SIZE REFER TO THE GA DRAWING
 - FOR BUILDING WEIGHTS AND DIMENSIONS REFER TO THE BUILDING DRAWING

DWG REFERENCES:
5793-312 ARIEL CYLINDER SUPPORT
5793-380 SLEEVES FOR COMPRESSORS / MOTORS

TYPICAL DETAIL / SECTION MARKING

DETAIL / SECTION
1
302
DWG. REF.

THIS DRAWING AND ANY DESIGNS SHOWN ARE THE CONFIDENTIAL PROPERTY OF VAPORTECH ENERGY SERVICES INC. AND MUST NOT BE USED, COPIED OR COMMUNICATED IN ANY FORM WITHOUT THE EXPRESS WRITTEN CONSENT OF VAPORTECH. 2011 VAPORTECH ENERGY SERVICES.

	SIGN	DATE
DRAWING APPROVAL		
ENGINEERING MANAGER		
PRODUCTION MANAGER		
QC (DRAWING CONFORMANCE)		
MATERIAL RELEASE		
PURCHASING (COMPLETE)		
QC (MATERIALS CONFORMANCE)		
QC (PARTIAL RELEASE)		
QC (FINAL SIGN OFF)		

REVISIONS			
REV	DESCRIPTION	MM/DD/YY	BY
0	ISSUED FOR FABRICATION	08/27/12	HD JVM
REV	DESCRIPTION	MM/DD/YY	BY CHK'D

ENCANA CORPORATION
c/o: SOLARIS Management Consultants Inc

VAPOR RECOVERY COMPRESSION UNIT
VRU M-970, SATURN PHASE 3 EXPANSION
09-27-079-17 W6M

SKID LAYOUT

DRAWN BY KD	MM/DD/YY 08/27/12	DRAWING NO. 5793-300	REV 0
PURCHASE ORDER No. EN11-01434		TAG No. M-970	