

# DETECTOR EXPLORATION LTD.

## PEMBINA 15-08 COMPRESSOR STATION LSD: 15-08-49-06 W5M

DRAWING NO.	REVISION DESCRIPTION	REV	DATE	BY	CHKD	APPR	DRAWING TITLE	ISSUED FOR APPROVAL	ISSUED FOR CONSTRUCTION	ISSUED FOR BLDG	AS BUILT	REV	REMARKS
2008-15-08-0	DRAWING INDEX SHEET	0	2008.03.20				DRAWING INDEX SHEET	2008.03.20					
2008-15-08-1	PILOT PLAN	0	2008.04.10				P & ID STANDARDS & FLOW DIAGRAM LEGEND	2008.04.10					
2008-15-08-2A	P & ID - INLET SEPARATOR/SALES PRELINE AREA	0	2008.04.08				P & ID - INLET SEPARATOR/SALES PRELINE AREA	2008.04.08					
2008-15-08-2B	P & ID - COMPRESSOR - MAIN PROCESS	0	2008.04.08				P & ID - COMPRESSOR - MAIN PROCESS	2008.04.08					
2008-15-08-2C	P & ID - DEHYDRATOR AREA	0	2008.04.08				P & ID - DEHYDRATOR AREA	2008.04.08					
2008-15-08-2D	P & ID - STORAGE TANK AREA	0	2008.04.08				P & ID - STORAGE TANK AREA	2008.04.08					
2008-15-08-3	PROCESS LINE LIST	0	2008.05.10				PROCESS LINE LIST	2008.05.10					
2008-15-08-4A	PIPING KEY PLAN	0	2008.05.10				PIPING KEY PLAN	2008.05.10					
2008-15-08-4B	PIPING PLAN - INLET AREA	0	2008.05.10				PIPING PLAN - INLET AREA	2008.05.10					
2008-15-08-4C	PIPING PLAN - COMPRESSOR AREA	0	2008.05.10				PIPING PLAN - COMPRESSOR AREA	2008.05.10					
2008-15-08-4D	PIPING PLAN - DEHYDRATOR AREA	0	2008.05.10				PIPING PLAN - DEHYDRATOR AREA	2008.05.10					
2008-15-08-4E	PIPING SECTIONS - INLET AREA	0	2008.05.10				PIPING SECTIONS - INLET AREA	2008.05.10					
2008-15-08-4F	PIPING SECTIONS - COMPRESSOR & DEHY AREA	0	2008.05.10				PIPING SECTIONS - COMPRESSOR & DEHY AREA	2008.05.10					
2008-15-08-5A	PIPING ISOMETRIC - INLET AREA	0	2008.05.05				PIPING ISOMETRIC - INLET AREA	2008.05.05					
2008-15-08-5B	PIPING ISOMETRIC - INLET SEPARATOR & WATER STORAGE TANK	0	2008.05.05				PIPING ISOMETRIC - INLET SEPARATOR & WATER STORAGE TANK	2008.05.05					
2008-15-08-5C	PIPING ISOMETRIC - COMPRESSOR AREA	0	2008.05.05				PIPING ISOMETRIC - COMPRESSOR AREA	2008.05.05					
2008-15-08-5D	PIPING ISOMETRIC - DEHYDRATOR AREA	0	2008.05.05				PIPING ISOMETRIC - DEHYDRATOR AREA	2008.05.05					
2008-15-08-5E	PIPING BILL OF MATERIALS	0	2008.05.25				PIPING BILL OF MATERIALS	2008.05.25					
2008-15-08-5F	PILE LOCATION KEY PLAN	0	2008.05.10				PILE LOCATION KEY PLAN	2008.05.10					
2008-15-08-5G	PILE LAYOUT - INLET AREA	0	2008.05.25				PILE LAYOUT - INLET AREA	2008.05.25					
2008-15-08-5H	PILE LAYOUT - COMPRESSOR AREA	0	2008.05.25				PILE LAYOUT - COMPRESSOR AREA	2008.05.25					
2008-15-08-5I	PILE LAYOUT - DEHYDRATOR AREA	0	2008.05.25				PILE LAYOUT - DEHYDRATOR AREA	2008.05.25					
2008-15-08-5J	PILE SCHEDULE	0	2008.05.10				PILE SCHEDULE	2008.05.10					
2008-15-08-5K	PILE DETAILS	0	2008.05.10				PILE DETAILS	2008.05.10					
2008-15-08-5L	PIPE SUPPORT/PIPERACK DETAILS	0	2008.05.05				PIPE SUPPORT/PIPERACK DETAILS	2008.05.05					
2008-15-08-5M	STAIRS & PLATFORM DETAILS - COMPRESSOR/INLET SEPARATOR	0	2008.05.25				STAIRS & PLATFORM DETAILS - COMPRESSOR/INLET SEPARATOR	2008.05.25					
2008-15-08-5N	STRUCTURAL STEEL DETAILS	0	2008.05.05				STRUCTURAL STEEL DETAILS	2008.05.05					
2008-15-08-5O	STORAGE TANK FOUNDATION DETAILS	0	2008.05.05				STORAGE TANK FOUNDATION DETAILS	2008.05.05					
2008-15-08-5P	TYPICAL PIP ASSEMBLY DETAIL	0	2008.05.05				TYPICAL PIP ASSEMBLY DETAIL	2008.05.05					
2008-15-08-5Q	TYPICAL PIPE SINK/MISC. PIPE SUPPORTS DETAIL	0	2008.05.05				TYPICAL PIPE SINK/MISC. PIPE SUPPORTS DETAIL	2008.05.05					
081341-1 & 2	SURVEY/VENDOR DRAWINGS	0	2008.05.25				SURVEY/VENDOR DRAWINGS	2008.05.25					
C-2034-B	INLET SEPARATOR - MECH. FLOW DIAGRAM	0	2008.05.25				INLET SEPARATOR - MECH. FLOW DIAGRAM	2008.05.25					
C-2034-C	INLET SEPARATOR - MAIN PIPING PLAN	0	2008.05.25				INLET SEPARATOR - MAIN PIPING PLAN	2008.05.25					
C-2034-D	INLET SEPARATOR - STRUCTURAL SHD	0	2008.05.25				INLET SEPARATOR - STRUCTURAL SHD	2008.05.25					
GA-060603 SHF1-4	COMPRESSOR CA - ANEL. JOL/A. WAKESHA 1244	0	2008.05.25				COMPRESSOR CA - ANEL. JOL/A. WAKESHA 1244	2008.05.25					
123837	COMPRESSOR SKID - PACKAGE SHD (PRIMARY STEEL)	0	2008.05.25				COMPRESSOR SKID - PACKAGE SHD (PRIMARY STEEL)	2008.05.25					
PF-000803-50	COMPRESSOR PROCESS FLOW	0	2008.05.25				COMPRESSOR PROCESS FLOW	2008.05.25					
SF-000803-20 10 28	COMPRESSOR UTILITIES (EXCEPT 23 & 25)	0	2008.05.25				COMPRESSOR UTILITIES (EXCEPT 23 & 25)	2008.05.25					
SF-000803-70 & 72	COMPRESSOR - SERVICE FLOW	0	2008.05.25				COMPRESSOR - SERVICE FLOW	2008.05.25					
132-26-03-P	DEHY - PAD - 16" OD DEHYDRATOR PACKAGE	0	2008.05.25				DEHY - PAD - 16" OD DEHYDRATOR PACKAGE	2008.05.25					
132-26-03-G	DEHY - PIPING ARRANGEMENT DRAWING	0	2008.05.25				DEHY - PIPING ARRANGEMENT DRAWING	2008.05.25					
1228-08-01-1	DEHY - SHD DRAWING	0	2008.05.25				DEHY - SHD DRAWING	2008.05.25					
1228-08-01-1	DEHY - GLYCOL CONDENSATOR	0	2008.05.25				DEHY - GLYCOL CONDENSATOR	2008.05.25					
1228-08-01-1	DEHY - GLYCOL REHEATER	0	2008.05.25				DEHY - GLYCOL REHEATER	2008.05.25					

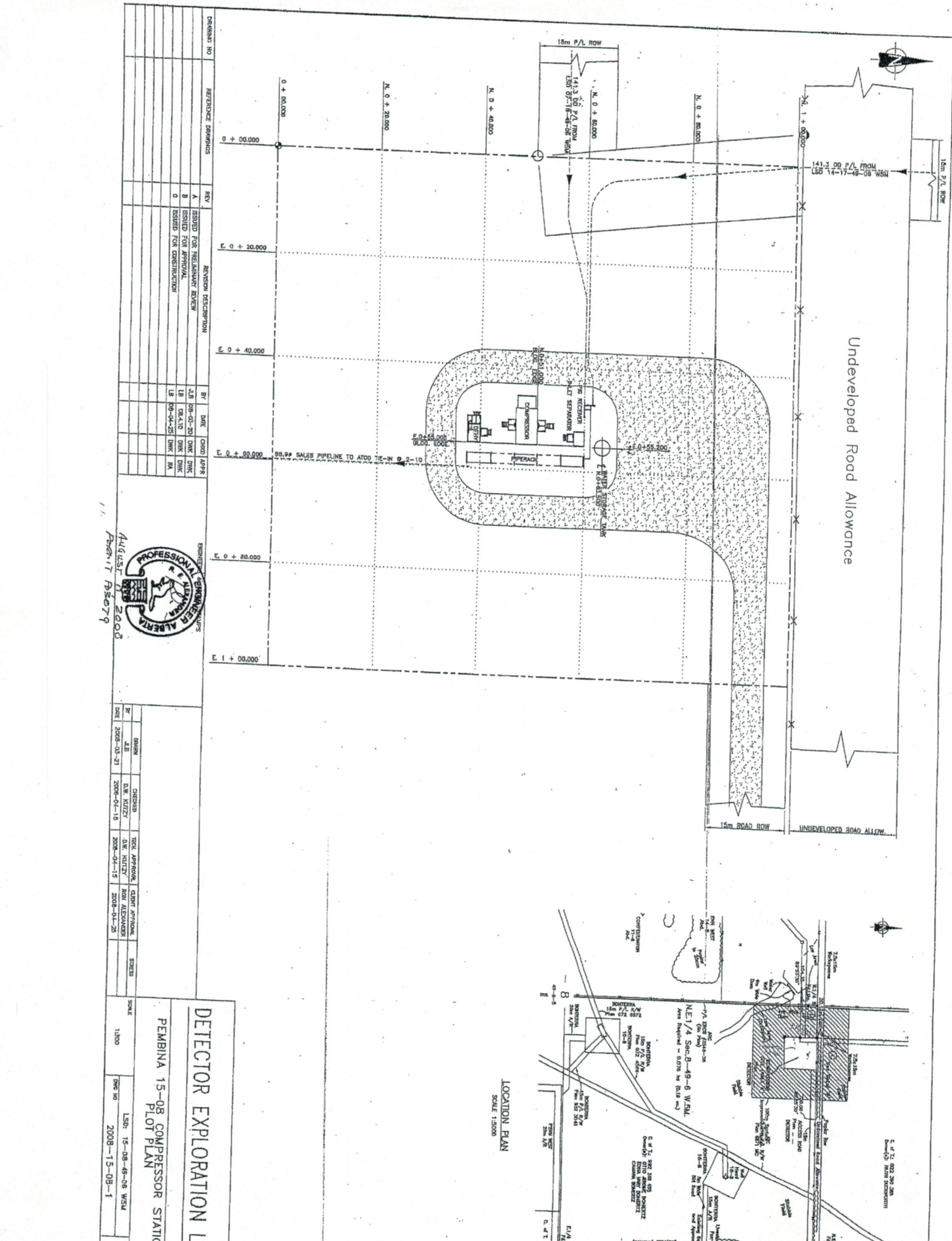
DRAWING NO.	REVISION DESCRIPTION	REV	DATE	BY	CHKD	APPR	DRAWING TITLE	ISSUED FOR APPROVAL	ISSUED FOR CONSTRUCTION	ISSUED FOR BLDG	AS BUILT	REV	REMARKS
2008-15-08-0	DRAWING INDEX SHEET	0	2008.03.20				DRAWING INDEX SHEET	2008.03.20					
2008-15-08-1	PILOT PLAN	0	2008.04.10				P & ID STANDARDS & FLOW DIAGRAM LEGEND	2008.04.10					
2008-15-08-2A	P & ID - INLET SEPARATOR/SALES PRELINE AREA	0	2008.04.08				P & ID - INLET SEPARATOR/SALES PRELINE AREA	2008.04.08					
2008-15-08-2B	P & ID - COMPRESSOR - MAIN PROCESS	0	2008.04.08				P & ID - COMPRESSOR - MAIN PROCESS	2008.04.08					
2008-15-08-2C	P & ID - DEHYDRATOR AREA	0	2008.04.08				P & ID - DEHYDRATOR AREA	2008.04.08					
2008-15-08-2D	P & ID - STORAGE TANK AREA	0	2008.04.08				P & ID - STORAGE TANK AREA	2008.04.08					
2008-15-08-3	PROCESS LINE LIST	0	2008.05.10				PROCESS LINE LIST	2008.05.10					
2008-15-08-4A	PIPING KEY PLAN	0	2008.05.10				PIPING KEY PLAN	2008.05.10					
2008-15-08-4B	PIPING PLAN - INLET AREA	0	2008.05.10				PIPING PLAN - INLET AREA	2008.05.10					
2008-15-08-4C	PIPING PLAN - COMPRESSOR AREA	0	2008.05.10				PIPING PLAN - COMPRESSOR AREA	2008.05.10					
2008-15-08-4D	PIPING PLAN - DEHYDRATOR AREA	0	2008.05.10				PIPING PLAN - DEHYDRATOR AREA	2008.05.10					
2008-15-08-4E	PIPING SECTIONS - INLET AREA	0	2008.05.10				PIPING SECTIONS - INLET AREA	2008.05.10					
2008-15-08-4F	PIPING SECTIONS - COMPRESSOR & DEHY AREA	0	2008.05.10				PIPING SECTIONS - COMPRESSOR & DEHY AREA	2008.05.10					
2008-15-08-5A	PIPING ISOMETRIC - INLET AREA	0	2008.05.05				PIPING ISOMETRIC - INLET AREA	2008.05.05					
2008-15-08-5B	PIPING ISOMETRIC - INLET SEPARATOR & WATER STORAGE TANK	0	2008.05.05				PIPING ISOMETRIC - INLET SEPARATOR & WATER STORAGE TANK	2008.05.05					
2008-15-08-5C	PIPING ISOMETRIC - COMPRESSOR AREA	0	2008.05.05				PIPING ISOMETRIC - COMPRESSOR AREA	2008.05.05					
2008-15-08-5D	PIPING ISOMETRIC - DEHYDRATOR AREA	0	2008.05.05				PIPING ISOMETRIC - DEHYDRATOR AREA	2008.05.05					
2008-15-08-5E	PIPING BILL OF MATERIALS	0	2008.05.25				PIPING BILL OF MATERIALS	2008.05.25					
2008-15-08-5F	PILE LOCATION KEY PLAN	0	2008.05.10				PILE LOCATION KEY PLAN	2008.05.10					
2008-15-08-5G	PILE LAYOUT - INLET AREA	0	2008.05.25				PILE LAYOUT - INLET AREA	2008.05.25					
2008-15-08-5H	PILE LAYOUT - COMPRESSOR AREA	0	2008.05.25				PILE LAYOUT - COMPRESSOR AREA	2008.05.25					
2008-15-08-5I	PILE LAYOUT - DEHYDRATOR AREA	0	2008.05.25				PILE LAYOUT - DEHYDRATOR AREA	2008.05.25					
2008-15-08-5J	PILE SCHEDULE	0	2008.05.10				PILE SCHEDULE	2008.05.10					
2008-15-08-5K	PILE DETAILS	0	2008.05.10				PILE DETAILS	2008.05.10					
2008-15-08-5L	PIPE SUPPORT/PIPERACK DETAILS	0	2008.05.05				PIPE SUPPORT/PIPERACK DETAILS	2008.05.05					
2008-15-08-5M	STAIRS & PLATFORM DETAILS - COMPRESSOR/INLET SEPARATOR	0	2008.05.25				STAIRS & PLATFORM DETAILS - COMPRESSOR/INLET SEPARATOR	2008.05.25					
2008-15-08-5N	STRUCTURAL STEEL DETAILS	0	2008.05.05				STRUCTURAL STEEL DETAILS	2008.05.05					
2008-15-08-5O	STORAGE TANK FOUNDATION DETAILS	0	2008.05.05				STORAGE TANK FOUNDATION DETAILS	2008.05.05					
2008-15-08-5P	TYPICAL PIP ASSEMBLY DETAIL	0	2008.05.05				TYPICAL PIP ASSEMBLY DETAIL	2008.05.05					
2008-15-08-5Q	TYPICAL PIPE SINK/MISC. PIPE SUPPORTS DETAIL	0	2008.05.05				TYPICAL PIPE SINK/MISC. PIPE SUPPORTS DETAIL	2008.05.05					

**DETECTOR EXPLORATION LTD.**

**PEMBINA 15-08 COMPRESSOR STATION  
DRAWING INDEX**

LSD: 15-08-49-06 W5M  
2008-15-08-0





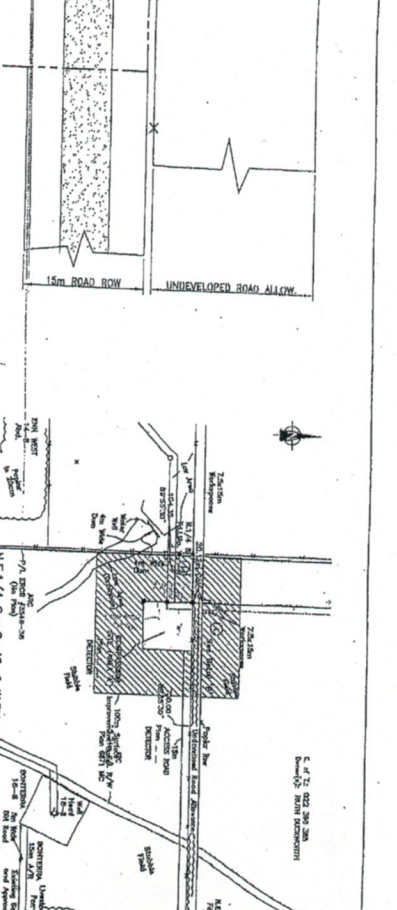
DRAWING NO.	REFERENCE DRAWINGS	REV.	REVISION DESCRIPTION	BY	DATE	CHKD	YR
	A	ISSUED FOR PRELIMINARY REVIEW		LB	08-01-03	DMK	DMK
	B	ISSUED FOR APPROVAL		LB	08-11-03	DMK	DMK
	C	ISSUED FOR CONSTRUCTION		LB	08-04-03	DMK	DMK

DESIGNED BY	CHECKED BY	DATE	SCALE
LB	DMK	08-01-03	1:500

PROFESSIONAL ENGINEER  
 ALBERTA  
 REG. NO. 2008  
 AUGUST 17, 2007

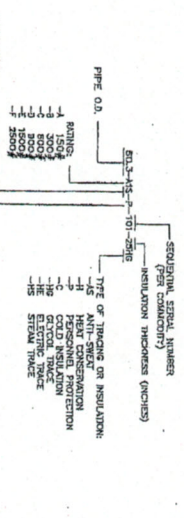
NO.	NAME	DATE	SCALE
1	LB	2008-01-21	1:500
2	DMK	2008-01-15	1:500
3	DMK	2008-01-15	1:500
4	DMK	2008-01-23	1:500

**DETECTOR EXPLORATION LTD.**  
**PEMBINA 15-08 COMPRESSOR STATION**  
**PLOT PLAN**  
 SCALE: 1:500  
 SHEET NO. 2008-15-08-1  
 DATE: 2008-15-08-08





**LINE NUMBER DESIGNATION**



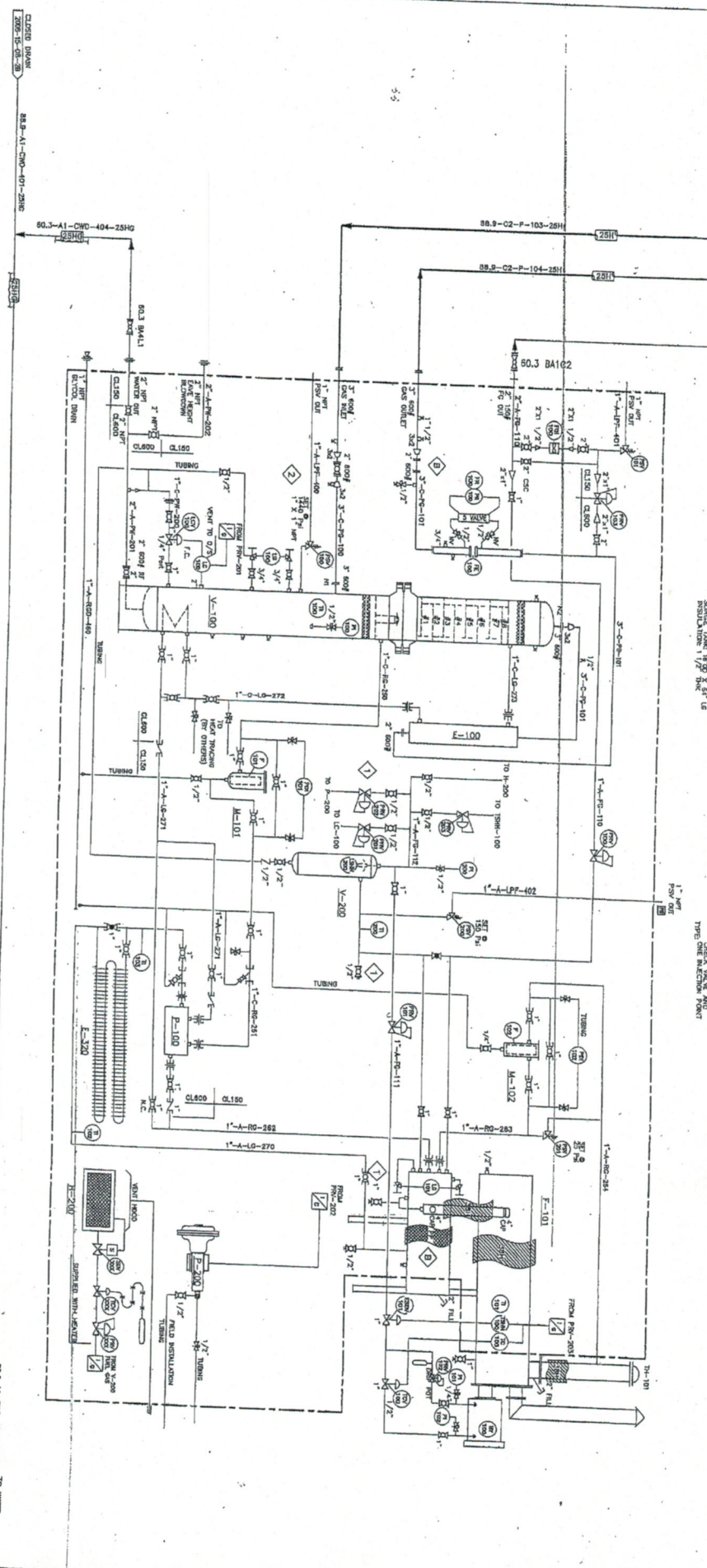












- E-100**  
HEATING EXCHANGER  
VENDOR: M&S-2000  
T. SCL. STAINLESS  
SHEET METAL  
DI. 140 P. 8-20/197  
DR. 1/8" CA
- F-101**  
GLYCOL RESERVOIRS  
VENDOR: M&S-2000  
T. SCL. STAINLESS  
SHEET METAL  
DI. 140 P. 8-20/197  
DR. 1/8" CA
- V-200**  
E-LIQUID SEPARATOR  
VENDOR: M&S-2000  
T. SCL. STAINLESS  
SHEET METAL  
DI. 140 P. 8-20/197  
DR. 1/8" CA
- P-100**  
GLYCOL CIRCULATION PUMP  
VENDOR: M&S-2000  
T. SCL. STAINLESS  
SHEET METAL  
DI. 140 P. 8-20/197  
DR. 1/8" CA
- M-101**  
GLYCOL FILTER HOUSING  
VENDOR: M&S-2000  
T. SCL. STAINLESS  
SHEET METAL  
DI. 140 P. 8-20/197  
DR. 1/8" CA
- H-200**  
HEATER  
VENDOR: M&S-2000  
T. SCL. STAINLESS  
SHEET METAL  
DI. 140 P. 8-20/197  
DR. 1/8" CA
- E-200**  
HEATING EXCHANGER  
VENDOR: M&S-2000  
T. SCL. STAINLESS  
SHEET METAL  
DI. 140 P. 8-20/197  
DR. 1/8" CA

REV	DATE	BY	CHKD	APPV	DESCRIPTION
A	2008-01-15	DLK	DLK	DLK	ISSUED FOR PRELIMINARY REVIEW
B	2008-04-15	DLK	DLK	DLK	ISSUED FOR APPROVAL
C	2008-04-15	DLK	DLK	DLK	ISSUED FOR CONSTRUCTION

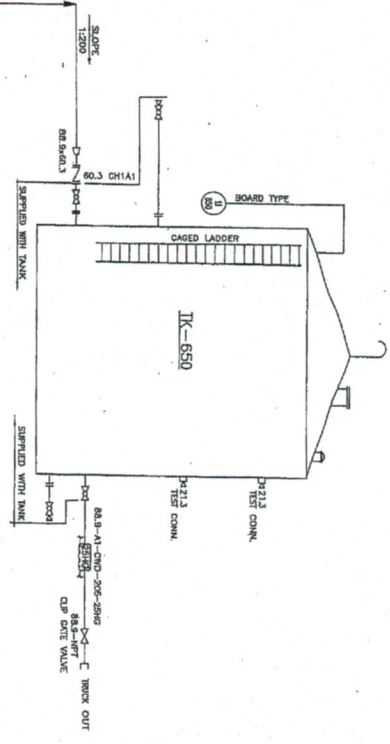
**PROFESSIONAL ENGINEER**  
 REG. NO. 10000  
 ALBERTA  
 AUGUST 11, 2008  
 A-6417-258679

DATE	BY	CHKD	APPV	DESCRIPTION
2008-01-15	DLK	DLK	DLK	ISSUED FOR PRELIMINARY REVIEW
2008-04-15	DLK	DLK	DLK	ISSUED FOR APPROVAL
2008-04-15	DLK	DLK	DLK	ISSUED FOR CONSTRUCTION

**DETECTOR EXPLORATION LTD.**  
 PEABINA 15-08 COMPRESSOR STATION  
 PROCESS & INSTRUMENT DIAGRAM  
 DETECTOR AREA  
 LSO: 15-08-49-08 WSK  
 DATE NO: 2008-15-08-2C



TK-650  
 DOUBLE WALLED SKIDDED WATER STORAGE TANK  
 SOURCE: FROM UNIT NO. 8000110  
 PROJECT: 15-08-49-08 WISH  
 DISTRICT: ALBERTA



REV	REVISION DESCRIPTION	BY	DATE	CHKD	APPR
A	ISSUED FOR PRELIMINARY REVIEW	A.E.	08.04.08		
B	ISSUED FOR APPROVAL	U.S.	08.05.08		
C	ISSUED FOR CONSTRUCTION	U.S.	08.05.08		

REGISTERED PROFESSIONAL ENGINEER  
 R.E. ALBERTA  
 AUGUST 17 2008  
 2008-15-08-49-08 WISH

REV	DATE	CHKD	APPR	CHKD	APPR	STATUS
A	2008-03-04	A.E.				
B	2008-04-15	D.E. KUTZY				
C	2008-04-15	D.E. KUTZY				
D	2008-04-25	RON ALEXANDER				

**DETECTOR EXPLORATION LTD.**  
 PEMBINA 15-08 COMPRESSOR STATION  
 PROCESS & INSTRUMENT DIAGRAM  
 STORAGE TANK AREA  
 SCALE: NONE  
 REV: NONE  
 LSP: 15-08-49-08 WISH  
 2008-15-08-2D



DVK CONSULTING LINE DESIGNATION	INSULATION	TEACING	SERVICE INFORMATION		OPERATING CONDITIONS		DESIGN CONDITIONS		TEST		Pipe Sched. or w.t.	Corr'n Allowance	Stress Relieve	Radiography	Reference Drawing PID	General Notes	SPECIAL NOTES	Revision
			FROM	TO	PRESSURE kPa (g)	TEMP °C	PRESSURE kPa (g)	TEMP °C	PRESSURE kPa(g)	TEST MEDIUM (3)								
1142963 A1	F	30	25/38	H	-	-	-	-	-	-	-	-	-	-	-	-	-	0
1142963 A2	F	30	25/38	H	-	-	-	-	-	-	-	-	-	-	-	-	-	0
88.9 C1	F	108	25	H	-	-	-	-	-	-	-	-	-	-	-	-	-	0
88.9 C2	F	104	25	H	-	-	-	-	-	-	-	-	-	-	-	-	-	0
114.3 A1	F	105	25	H	-	-	-	-	-	-	-	-	-	-	-	-	-	0
60.3 A1	RG	30	25	H	-	-	-	-	-	-	-	-	-	-	-	-	-	0
60.3 A2	FG	30	25	H	-	-	-	-	-	-	-	-	-	-	-	-	-	0
60.3 A3	FG	30	25	H	-	-	-	-	-	-	-	-	-	-	-	-	-	0
60.3 A4	SG	305	25	H	-	-	-	-	-	-	-	-	-	-	-	-	-	0
88.9 A1	CWD	401	25	H	-	-	-	-	-	-	-	-	-	-	-	-	-	0
88.9 A1	CWD	42	25	H	-	-	-	-	-	-	-	-	-	-	-	-	-	0
60.3 A1	CWD	403	25	H	-	-	-	-	-	-	-	-	-	-	-	-	-	0
60.3 A1	CWD	404	25	H	-	-	-	-	-	-	-	-	-	-	-	-	-	0

**GENERAL NOTES**

1. SHEET COORDINATES, DIMENSIONS, AND TOLERANCES SHALL BE AS SHOWN ON THIS SHEET.

2. ALL DIMENSIONS SHALL BE IN METERS UNLESS OTHERWISE SPECIFIED.

3. MATERIALS SHALL BE AS SPECIFIED IN THE BIDDING DOCUMENTS AND THE SPECIFICATIONS.

4. THE CONTRACTOR SHALL BE RESPONSIBLE FOR OBTAINING ALL NECESSARY PERMITS AND APPROVALS FROM THE LOCAL AUTHORITIES.

5. THE CONTRACTOR SHALL BE RESPONSIBLE FOR OBTAINING ALL NECESSARY PERMITS AND APPROVALS FROM THE LOCAL AUTHORITIES.



August 1, 2008  
 002417 408 79

Rev. No.	DESCRIPTION	DATE	BY	CHKD	APP'D	DATE	BY	CHKD	APP'D	DATE	BY	CHKD	APP'D	DATE	BY	CHKD	APP'D	DATE	BY	CHKD	APP'D	
0	ISSUED FOR CONSTRUCTION	09/09/08	DVK	JA	JA	09/09/08	DVK	JA	JA	09/09/08	DVK	JA	JA	09/09/08	DVK	JA	JA	09/09/08	DVK	JA	JA	09/09/08

**DVK CONSULTING LTD.**

DETECTOR EXPLORATION LTD.

PEARBINA 16-08

SPRING LINE LIST SHT. 1

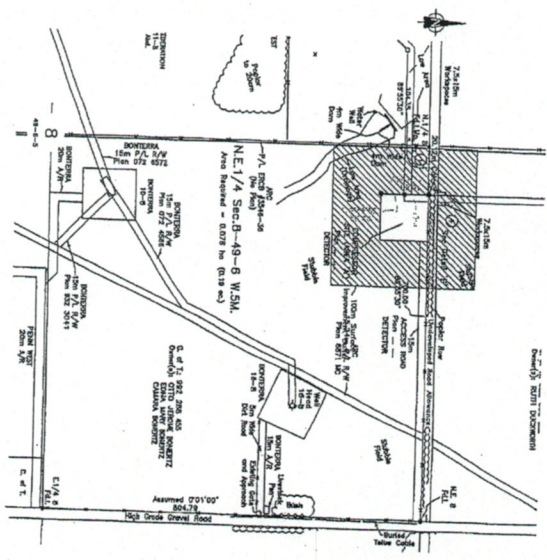
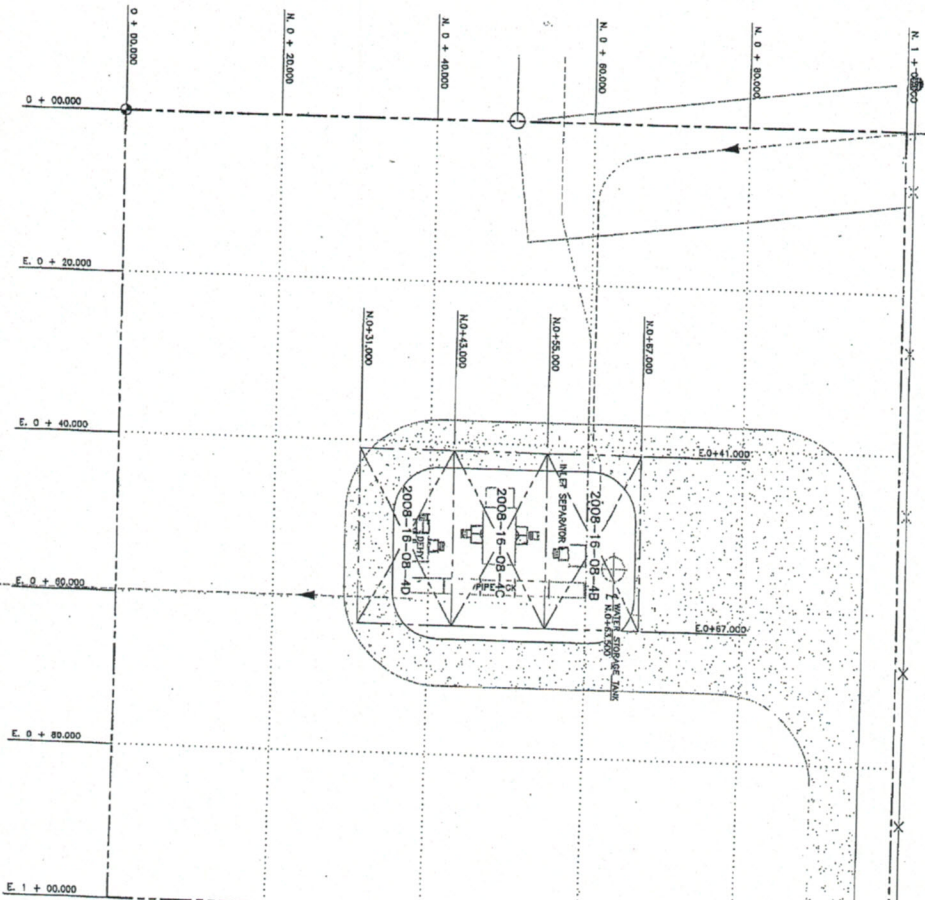
COMPRESSOR STATION

PROJECT NO. LSD 16-08-49-06 W53M

REV 0



Undeveloped Road Allowance



DRAWING NO.	REFERENCE DRAWINGS	REV.	REVISION DESCRIPTION	BY	DATE	CHKD	APP'D
		A	ISSUED FOR PRELIMINARY REVIEW	A.B.	06.03.20	DKK	DKK
		B	ISSUED FOR APPROVAL	L.B.	08.11.10	DKK	DKK
		C	ISSUED FOR CONSTRUCTION	L.B.	08.05.25	DKK	DKK

DESIGNER & PERMIT STAMPS	DESIGN	CHECKED	TECH. APPROVAL	CLEAR APPROVAL	STRESS
	A.B.	D.W. KUTZ	D.W. KUTZ	ROD ALZANDER	
	DATE: 2008-05-21	DATE: 2008-04-15	DATE: 2008-04-15	DATE: 2008-04-23	

**DETECTOR EXPLORATION LTD.**

**PEMBINA 15-08 COMPRESSOR STATION**

PIPING KEY PLAN

SCALE: 1:300

DATE: 15-08-08 15:00

PROJECT NO: 2008-15-08-4A





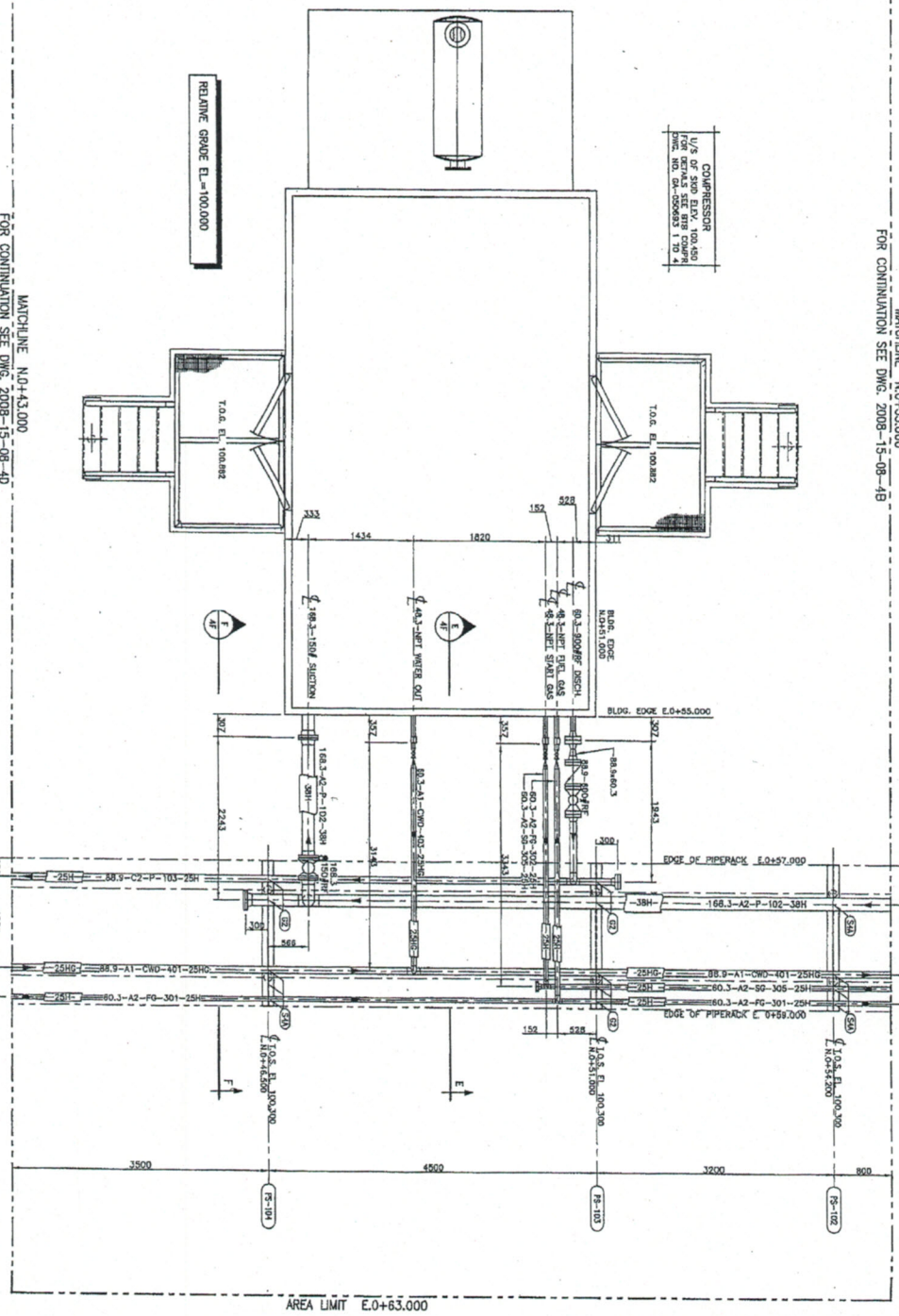






MATCHLINE N.O.+55.000  
FOR CONTINUATION SEE DWG. 2008-15-08-4B

AREA LIMIT E.O.+41.000



AREA LIMIT E.O.+63.000

NOTE:  
1. CONTRACTOR TO PROVIDE 27mm DRAINS  
AND VENTS AS NOTED FOR PROMISES.

MATCHLINE N.O.+43.000  
FOR CONTINUATION SEE DWG. 2008-15-08-4D

DRAWING NO.	REFERENCE DRAWINGS	REV.	REVISION DESCRIPTION	BY	DATE	CHKD	APPV
		A	ISSUED FOR APPROVAL	ALB	08.05.10	DMK	PK
		D	ISSUED FOR CONSTRUCTION	LB	08.05.25	DMK	PK

ENGINEER & FOUND STAMPS

DATE	DESIGN	DIRECTOR	TITLE APPROVAL	CLIENT APPROVAL	STATUS
2008-03-21	ALB	D.M. KUTZY	D.M. KUTZY	RON ALDENBERGER	
2008-05-10					
2008-05-10					

**DETECTOR EXPLORATION LTD.**

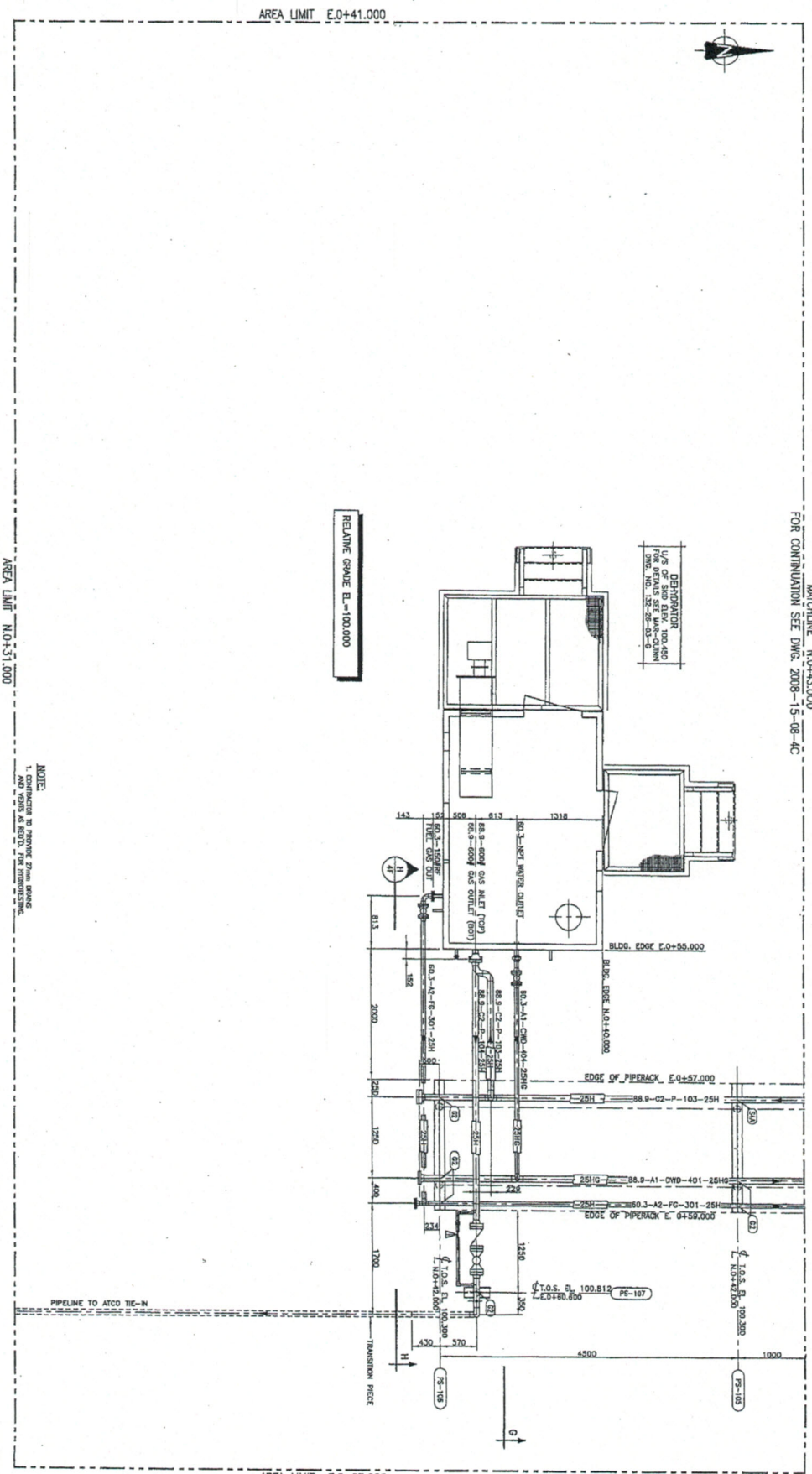
**PEMBINA 15-08 COMPRESSOR STATION  
PIPING PLAN  
COMPRESSOR AREA**

SCALE: 1:30

DATE: 15-08-08 WSM

DATE: 2008-15-08-4C

MANLINE N.O+43.000  
 FOR CONTINUATION SEE DWG. 2008-15-08-4C



DRAWING NO.	REFERENCE DRAWINGS	REV.	REVISION DESCRIPTION	BY	DATE	CHKD	APP'D	ENGINEER'S & PEER STATUS
		A	ISSUED FOR ASSEMBLY	A.S.	06.06.10	DMK	NA	
		0	ISSUED FOR CONSTRUCTION	LS	06.06.25	DMK	NA	

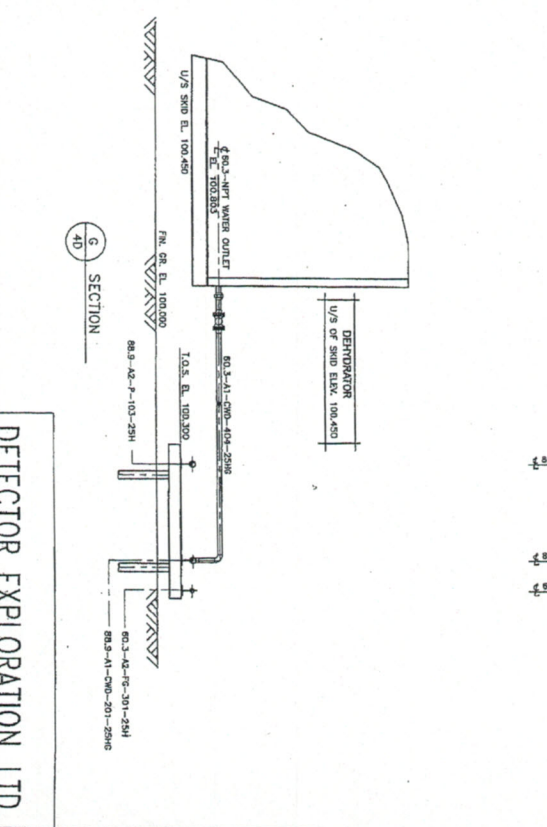
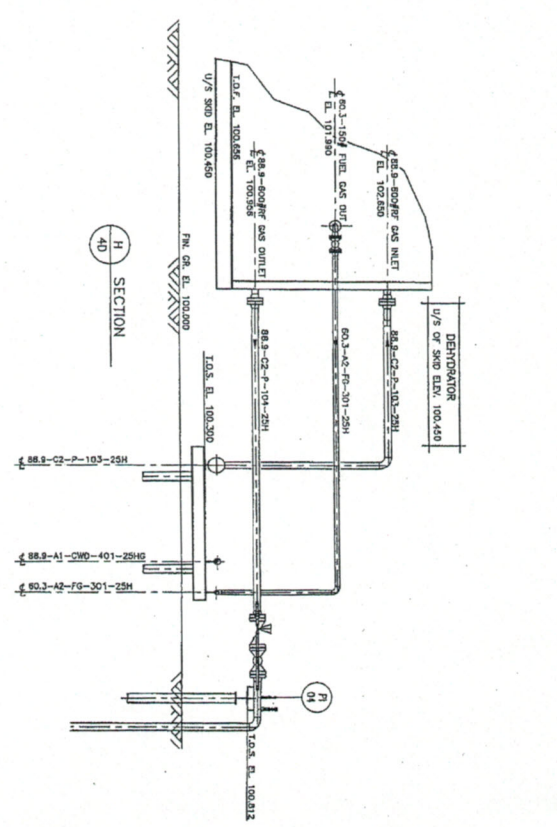
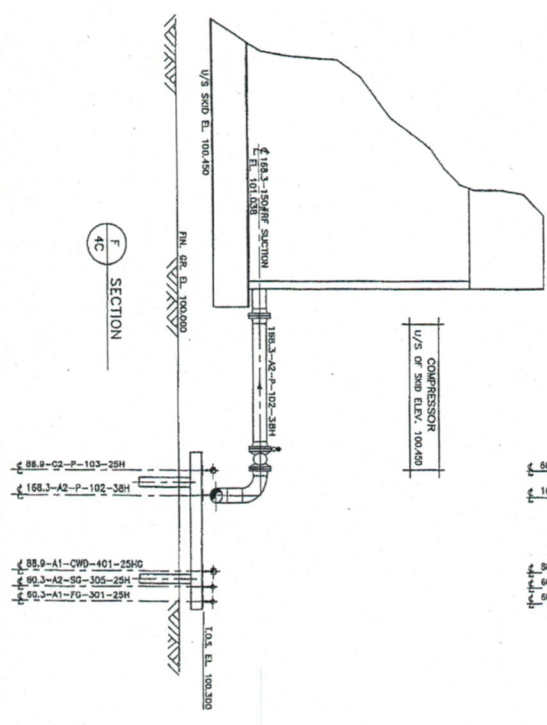
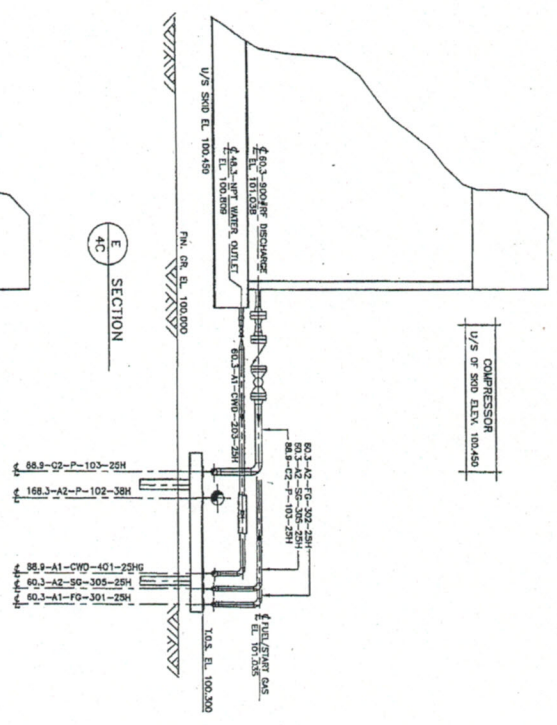
BY	DATE	CHKD	DATE	TECH. APPROVAL	DATE	QUBR. APPROVAL	DATE	STRESS
A.S.	2008-03-21	DMK	2008-05-10	D.W. KITZKY	2008-05-10	R.M. ALEXANDER	2008-05-10	

<b>DETECTOR EXPLORATION LTD.</b> PEMBINA 15-08 COMPRESSOR STATION PIPING PLAN DEHYDRATOR AREA		SCALE: 1:50 DWG NO: 2008-15-08-4D
--	--	--------------------------------------







DRAWING NO.	REFERENCE DRAWINGS	REV.	REVISION DESCRIPTION	BY	DATE	CHECKED	DATE	DESIGNED & DRAWN	DATE	CHECKED	DATE	TITLE	DATE	DESIGNED & DRAWN	DATE	CHECKED	DATE	SCALE	DATE
		A	ISSUED FOR APPROVAL	ALB	08.03.10	DMK	10											1:30	
		0	ISSUED FOR CONSTRUCTION	ALB	08.03.23	DMK	10											1:30	2008-15-08-4F

REV.	DATE	BY	DESCRIPTION
1	15-08-08	WJH	ISSUED FOR CONSTRUCTION

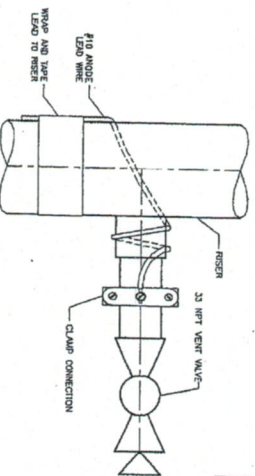
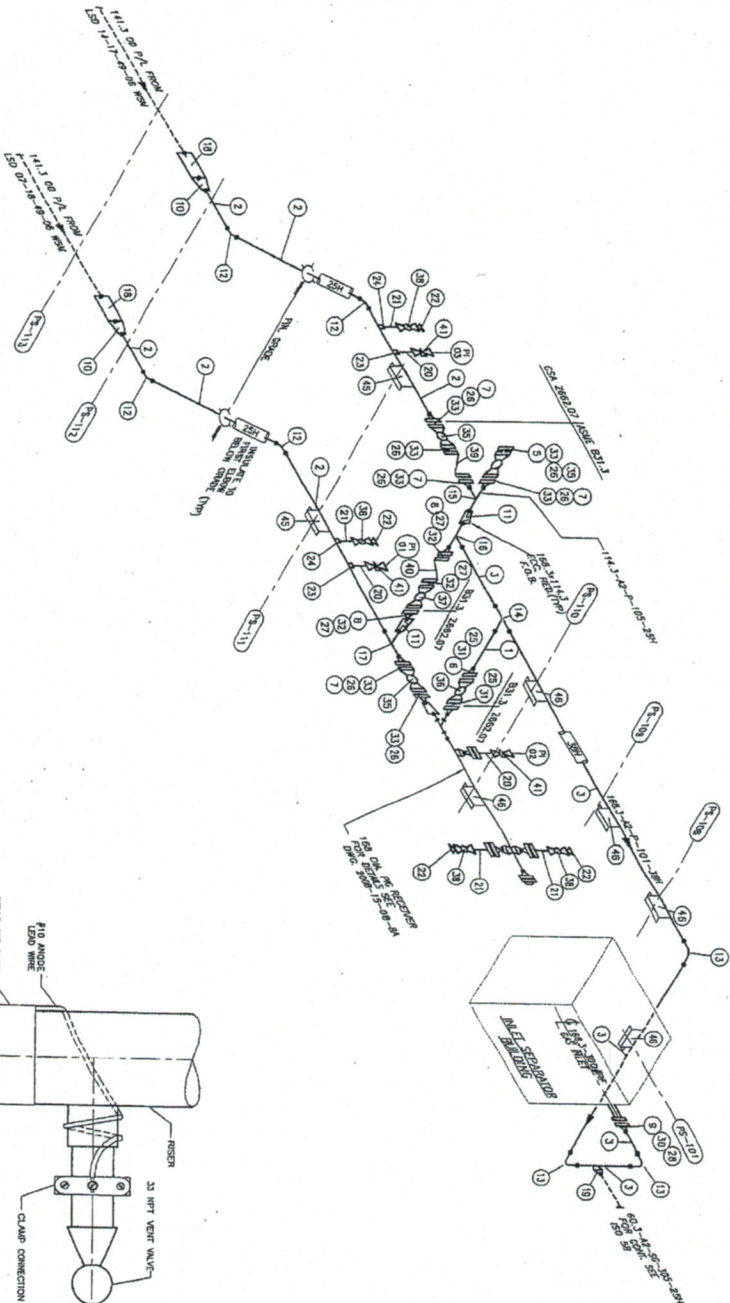
REV.	DATE	BY	DESCRIPTION
1	15-08-08	WJH	ISSUED FOR CONSTRUCTION

**DETECTOR EXPLORATION LTD.**

**PEMBINA 15-08 COMPRESSOR STATION**  
**PIPING SECTIONS**  
**COMPRESSOR AND DEHY. AREA**

LSD: 15-08-08 WJH





**BILL OF MATERIAL**

LNK	QTY	SIZE	RATING	DESCRIPTION	MATERIAL	UNIT
1	1	14.5mm	SCN 40	PIPE	ASTM A333-6	SPF
2	1	14.5mm	SCN 40	PIPE	ASTM A333-6	F
3	1	14.5mm	SCN 40	PIPE	ASTM A333-6	F
4	1	14.5mm	SCN 40	PIPE	ASTM A333-6	F
5	1	14.5mm	SCN 40	PIPE	ASTM A333-6	F
6	1	14.5mm	SCN 40	PIPE	ASTM A333-6	F
7	1	14.5mm	SCN 40	PIPE	ASTM A333-6	F
8	1	14.5mm	SCN 40	PIPE	ASTM A333-6	F
9	1	14.5mm	SCN 40	PIPE	ASTM A333-6	F
10	1	14.5mm	SCN 40	PIPE	ASTM A333-6	F
11	1	14.5mm	SCN 40	PIPE	ASTM A333-6	F
12	1	14.5mm	SCN 40	PIPE	ASTM A333-6	F
13	1	14.5mm	SCN 40	PIPE	ASTM A333-6	F
14	1	14.5mm	SCN 40	PIPE	ASTM A333-6	F
15	1	14.5mm	SCN 40	PIPE	ASTM A333-6	F
16	1	14.5mm	SCN 40	PIPE	ASTM A333-6	F
17	1	14.5mm	SCN 40	PIPE	ASTM A333-6	F
18	1	14.5mm	SCN 40	PIPE	ASTM A333-6	F
19	1	14.5mm	SCN 40	PIPE	ASTM A333-6	F
20	1	14.5mm	SCN 40	PIPE	ASTM A333-6	F
21	1	14.5mm	SCN 40	PIPE	ASTM A333-6	F
22	1	14.5mm	SCN 40	PIPE	ASTM A333-6	F
23	1	14.5mm	SCN 40	PIPE	ASTM A333-6	F
24	1	14.5mm	SCN 40	PIPE	ASTM A333-6	F
25	1	14.5mm	SCN 40	PIPE	ASTM A333-6	F
26	1	14.5mm	SCN 40	PIPE	ASTM A333-6	F
27	1	14.5mm	SCN 40	PIPE	ASTM A333-6	F
28	1	14.5mm	SCN 40	PIPE	ASTM A333-6	F
29	1	14.5mm	SCN 40	PIPE	ASTM A333-6	F
30	1	14.5mm	SCN 40	PIPE	ASTM A333-6	F
31	1	14.5mm	SCN 40	PIPE	ASTM A333-6	F
32	1	14.5mm	SCN 40	PIPE	ASTM A333-6	F
33	1	14.5mm	SCN 40	PIPE	ASTM A333-6	F
34	1	14.5mm	SCN 40	PIPE	ASTM A333-6	F
35	1	14.5mm	SCN 40	PIPE	ASTM A333-6	F
36	1	14.5mm	SCN 40	PIPE	ASTM A333-6	F
37	1	14.5mm	SCN 40	PIPE	ASTM A333-6	F
38	1	14.5mm	SCN 40	PIPE	ASTM A333-6	F
39	1	14.5mm	SCN 40	PIPE	ASTM A333-6	F
40	1	14.5mm	SCN 40	PIPE	ASTM A333-6	F
41	1	14.5mm	SCN 40	PIPE	ASTM A333-6	F
42	1	14.5mm	SCN 40	PIPE	ASTM A333-6	F
43	1	14.5mm	SCN 40	PIPE	ASTM A333-6	F
44	1	14.5mm	SCN 40	PIPE	ASTM A333-6	F
45	1	14.5mm	SCN 40	PIPE	ASTM A333-6	F
46	1	14.5mm	SCN 40	PIPE	ASTM A333-6	F
47	1	14.5mm	SCN 40	PIPE	ASTM A333-6	F
48	1	14.5mm	SCN 40	PIPE	ASTM A333-6	F
49	1	14.5mm	SCN 40	PIPE	ASTM A333-6	F
50	1	14.5mm	SCN 40	PIPE	ASTM A333-6	F

**DETECTOR EXPLORATION LTD.**

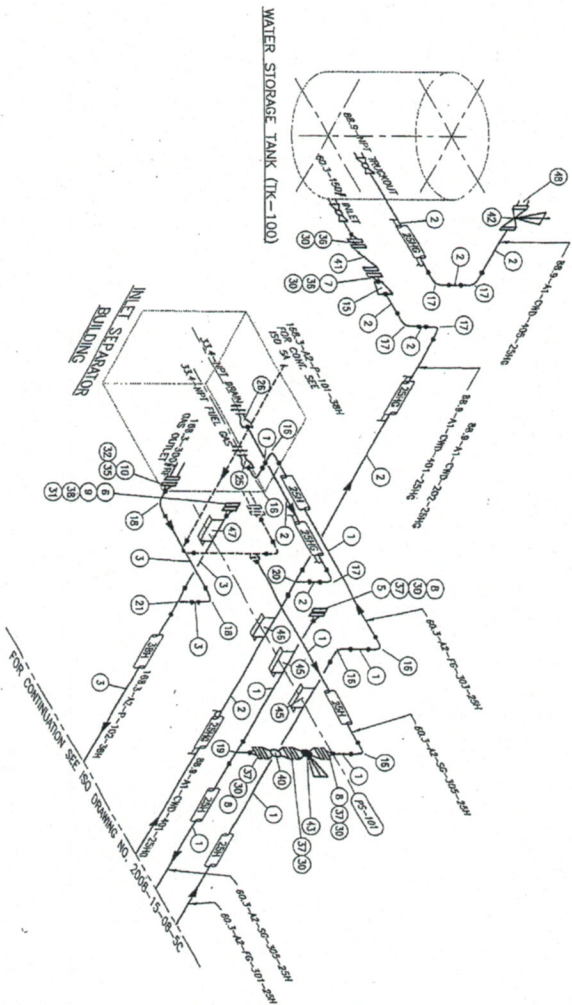
**PEMBINA 15-08 COMPRESSOR STATION  
PIPING ISOMETRIC  
INLET AREA**

REVISION	DATE	BY	DESCRIPTION
1	2008-05-11	D.M. KUTZ	ISSUED FOR APPROVAL
2	2008-05-11	D.M. KUTZ	ISSUED FOR CONSTRUCTION

NO.	DATE	BY	DESCRIPTION
1	2008-05-11	D.M. KUTZ	ISSUED FOR APPROVAL
2	2008-05-11	D.M. KUTZ	ISSUED FOR CONSTRUCTION

DATE	2008-05-11
SCALE	AS SHOWN
PROJECT	PEMBINA 15-08 COMPRESSOR STATION
CLIENT	DETECTOR EXPLORATION LTD.





**BILL OF MATERIAL**

LNK	QTY	SIZE	SA.	DESCRIPTION	MATERIAL
1	15m	60.3mm	SCH 40	PIPE SMLS	A305 B
2	15m	80.3mm	SCH 40	PIPE SMLS	A305 B
3	150.3mm	80.3mm	SCH 40	PIPE SMLS	A305 B
Flanges					
4	1	80.3mm	150#	FLANGE RF	A305 LF C1
5	1	101.6mm	150#	FLANGE RF	A305 LF C1
6	1	60.3mm	150#	FLANGE RF WN	A305 LF C1
7	1	60.3mm	150#	FLANGE RF WN	A305 LF C1
8	3	60.3mm	150#	FLANGE RF WN	A305 LF C1
9	1	168.3mm	150#	FLANGE RF WN	A305 LF C1
10	1	168.3mm	300#	FLANGE RF WN	A305 LF C1
Weld Fittings					
11	1	80.3mm x 60.3mm	SCH 40	CONC REDUCER BW	A305 WB
12	2	80.3mm	SCH 40	ELBOW 90 DEGREE BW	A305 WB
13	2	80.3mm	SCH 40	ELBOW 90 DEGREE BW	A305 WB
14	2	60.3mm x 60.3mm	SCH 40	STRAIGHT TE BW	A305 WB
15	1	60.3mm x 60.3mm	SCH 40	STRAIGHT TE BW	A305 WB
16	1	60.3mm x 80.3mm	SCH 40	STRAIGHT TE BW	A305 WB
17	1	168.3mm x 168.3mm	SCH 40	STRAIGHT TE BW	A305 WB
Screwed and Socket Weld Fittings					
18	1	80.3mm x 152.4mm	SCH 40	CONCENTRIC SWAGE - ELBOW	A305 B
19	1	80.3mm x 152.4mm	SCH 40	CONCENTRIC SWAGE - ELBOW	A305 B
Boths					
20	1	60.3mm	150#	GASKET RF SP. SPIRAL WOUND	316 SS
21	1	168.3mm	150#	GASKET RF SP. SPIRAL WOUND	316 SS
22	1	168.3mm	300#	GASKET RF SP. SPIRAL WOUND	316 SS
Valves					
23	1	80.3mm	150#	STUD BALL VALVE	A305 WB
24	1	80.3mm	150#	STUD BALL VALVE	A305 WB
25	1	80.3mm	150#	STUD BALL VALVE	A305 WB
26	1	80.3mm	150#	STUD BALL VALVE	A305 WB
27	1	80.3mm	150#	STUD BALL VALVE	A305 WB
28	1	80.3mm	150#	STUD BALL VALVE	A305 WB
29	1	80.3mm	150#	STUD BALL VALVE	A305 WB
30	1	80.3mm	150#	STUD BALL VALVE	A305 WB
31	1	80.3mm	150#	STUD BALL VALVE	A305 WB
32	1	80.3mm	150#	STUD BALL VALVE	A305 WB
Taps					
33	1	80.3mm	150#	BALL VALVE TAP	A305 WB
34	1	80.3mm	150#	BALL VALVE TAP	A305 WB
35	1	80.3mm	150#	BALL VALVE TAP	A305 WB
36	1	80.3mm	150#	BALL VALVE TAP	A305 WB
37	1	80.3mm	150#	BALL VALVE TAP	A305 WB
38	1	80.3mm	150#	BALL VALVE TAP	A305 WB
39	1	80.3mm	150#	BALL VALVE TAP	A305 WB
40	1	80.3mm	150#	BALL VALVE TAP	A305 WB
41	1	80.3mm	150#	BALL VALVE TAP	A305 WB
42	1	80.3mm	150#	BALL VALVE TAP	A305 WB
43	1	80.3mm	150#	BALL VALVE TAP	A305 WB
44	1	80.3mm	150#	BALL VALVE TAP	A305 WB
45	1	80.3mm	150#	BALL VALVE TAP	A305 WB

DRAWING NO	REFERENCE DRAWINGS	REV	REVISION DESCRIPTION	BY	DATE	CHKD	APPV
		A	ISSUED FOR APPROVAL	A.B	08.03.05	DMK	RM
		0	ISSUED FOR CONSTRUCTION	LB	08.03.05	DMK	RM

NAME	DESIGNED	TITLE APPROVAL	DATE APPROVAL
A.B	D.M. KUTZ	D.M. KUTZ	2008-05-05
		ROY ALXANDER	2008-05-10

**DETECTOR EXPLORATION LTD.**

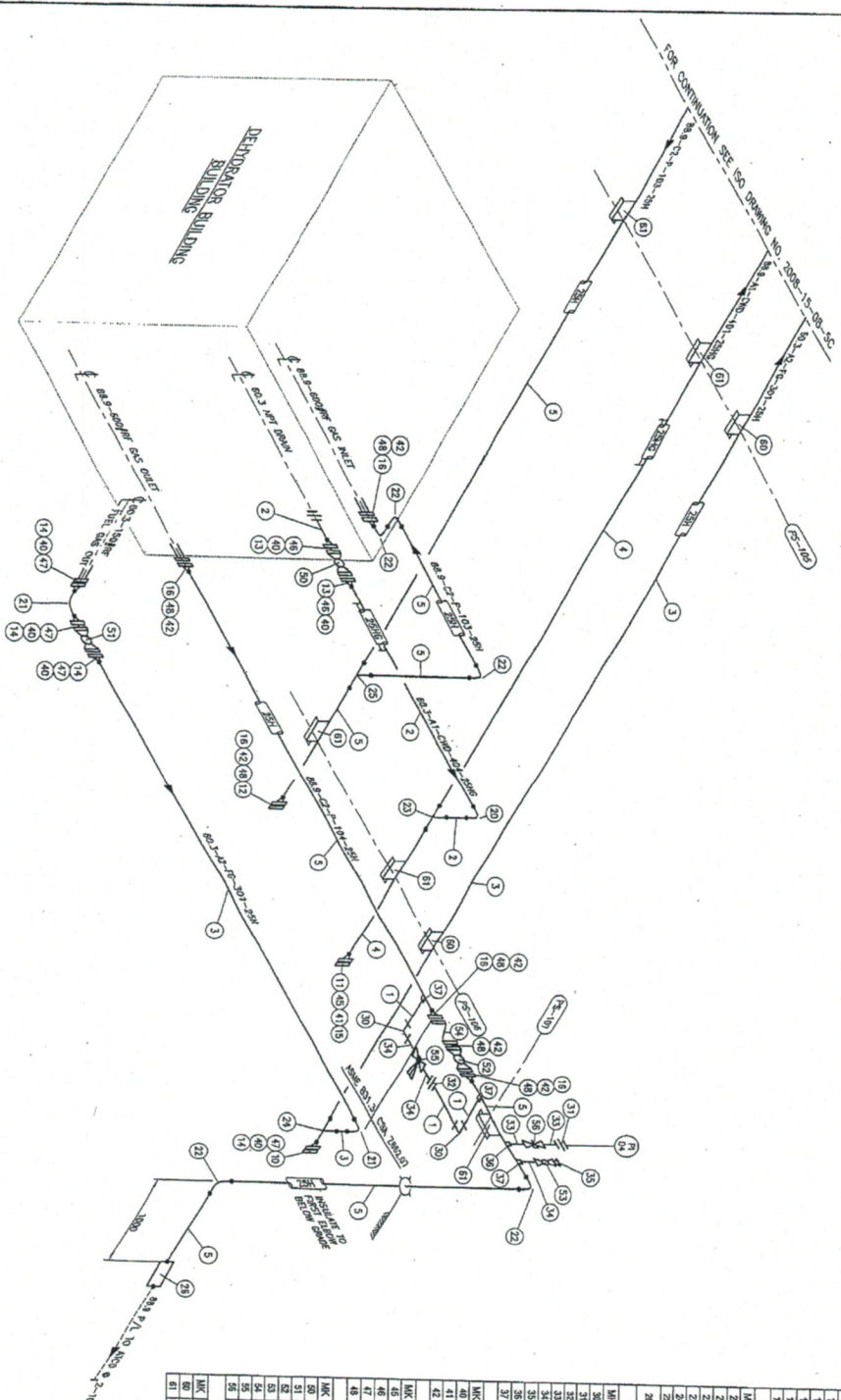
**PEMBINA 15-08 COMPRESSOR STATION**  
**PIPING ISOMETRIC**  
**INLET SEPARATOR/WATER TANK AREA**

SCALE: NONE  
 DWG NO: 2008-15-08-5B









NO.	QTY	SIZE	RATING	SCH.	DESCRIPTION	MATERIAL	UNIT
1	2m	33.4mm	1500	SCH. 80	PIPE SMLS	A307	m
2	4m	60.3mm	1500	SCH. 80	PIPE SMLS	A307	m
3	11m	60.3mm	1500	SCH. 80	PIPE SMLS	A307	m
4	2m	60.3mm	1500	SCH. 40	PIPE SMLS	A307	m
5	2m	60.3mm	1500	SCH. 40	PIPE SMLS	A307	m
<b>Flanges</b>							
NO.	QTY	SIZE	RATING	SCH.	DESCRIPTION	MATERIAL	UNIT
1	1	60.3mm	1500	SCH. 80	FLANGE RF WN	A307	pc
2	1	60.3mm	1500	SCH. 80	FLANGE RF WN	A307	pc
3	2	60.3mm	1500	SCH. 80	FLANGE RF WN	A307	pc
4	4	60.3mm	1500	SCH. 80	FLANGE RF WN	A307	pc
5	1	60.3mm	1500	SCH. 40	FLANGE RF WN	A307	pc
6	3	60.3mm	1500	SCH. 40	FLANGE RF WN	A307	pc
<b>Weld Fittings</b>							
NO.	QTY	SIZE	RATING	SCH.	DESCRIPTION	MATERIAL	UNIT
1	1	60.3mm	1500	SCH. 80	ELBOW 90 DEGREE 1/2 BW	A307	pc
2	2	60.3mm	1500	SCH. 80	ELBOW 90 DEGREE 1/2 BW	A307	pc
3	1	60.3mm	1500	SCH. 80	ELBOW 90 DEGREE 1/2 BW	A307	pc
4	1	60.3mm	1500	SCH. 80	REDUCING TEE BW	A307	pc
5	1	60.3mm	1500	SCH. 80	STRAIGHT TEE BW	A307	pc
6	1	60.3mm	1500	SCH. 80	STRAIGHT TEE BW	A307	pc
7	1	60.3mm	1500	SCH. 80	STRAIGHT TEE BW	A307	pc
8	1	60.3mm	1500	SCH. 80	STRAIGHT TEE BW	A307	pc
9	1	60.3mm	1500	SCH. 80	STRAIGHT TEE BW	A307	pc
10	1	60.3mm	1500	SCH. 80	STRAIGHT TEE BW	A307	pc
11	1	60.3mm	1500	SCH. 80	STRAIGHT TEE BW	A307	pc
12	1	60.3mm	1500	SCH. 80	STRAIGHT TEE BW	A307	pc
13	1	60.3mm	1500	SCH. 80	STRAIGHT TEE BW	A307	pc
14	1	60.3mm	1500	SCH. 80	STRAIGHT TEE BW	A307	pc
15	1	60.3mm	1500	SCH. 80	STRAIGHT TEE BW	A307	pc
16	1	60.3mm	1500	SCH. 80	STRAIGHT TEE BW	A307	pc
17	1	60.3mm	1500	SCH. 80	STRAIGHT TEE BW	A307	pc
18	1	60.3mm	1500	SCH. 80	STRAIGHT TEE BW	A307	pc
19	1	60.3mm	1500	SCH. 80	STRAIGHT TEE BW	A307	pc
20	1	60.3mm	1500	SCH. 80	STRAIGHT TEE BW	A307	pc
21	1	60.3mm	1500	SCH. 80	STRAIGHT TEE BW	A307	pc
22	1	60.3mm	1500	SCH. 80	STRAIGHT TEE BW	A307	pc
23	1	60.3mm	1500	SCH. 80	STRAIGHT TEE BW	A307	pc
24	1	60.3mm	1500	SCH. 80	STRAIGHT TEE BW	A307	pc
25	1	60.3mm	1500	SCH. 80	STRAIGHT TEE BW	A307	pc
26	1	60.3mm	1500	SCH. 80	STRAIGHT TEE BW	A307	pc
27	1	60.3mm	1500	SCH. 80	STRAIGHT TEE BW	A307	pc
28	1	60.3mm	1500	SCH. 80	STRAIGHT TEE BW	A307	pc
29	1	60.3mm	1500	SCH. 80	STRAIGHT TEE BW	A307	pc
30	1	60.3mm	1500	SCH. 80	STRAIGHT TEE BW	A307	pc
31	1	60.3mm	1500	SCH. 80	STRAIGHT TEE BW	A307	pc
32	1	60.3mm	1500	SCH. 80	STRAIGHT TEE BW	A307	pc
33	1	60.3mm	1500	SCH. 80	STRAIGHT TEE BW	A307	pc
34	1	60.3mm	1500	SCH. 80	STRAIGHT TEE BW	A307	pc
35	1	60.3mm	1500	SCH. 80	STRAIGHT TEE BW	A307	pc
36	1	60.3mm	1500	SCH. 80	STRAIGHT TEE BW	A307	pc
37	1	60.3mm	1500	SCH. 80	STRAIGHT TEE BW	A307	pc
38	1	60.3mm	1500	SCH. 80	STRAIGHT TEE BW	A307	pc
39	1	60.3mm	1500	SCH. 80	STRAIGHT TEE BW	A307	pc
40	1	60.3mm	1500	SCH. 80	STRAIGHT TEE BW	A307	pc
41	1	60.3mm	1500	SCH. 80	STRAIGHT TEE BW	A307	pc
42	1	60.3mm	1500	SCH. 80	STRAIGHT TEE BW	A307	pc
43	1	60.3mm	1500	SCH. 80	STRAIGHT TEE BW	A307	pc
44	1	60.3mm	1500	SCH. 80	STRAIGHT TEE BW	A307	pc
45	1	60.3mm	1500	SCH. 80	STRAIGHT TEE BW	A307	pc
46	1	60.3mm	1500	SCH. 80	STRAIGHT TEE BW	A307	pc
47	1	60.3mm	1500	SCH. 80	STRAIGHT TEE BW	A307	pc
48	1	60.3mm	1500	SCH. 80	STRAIGHT TEE BW	A307	pc
49	1	60.3mm	1500	SCH. 80	STRAIGHT TEE BW	A307	pc
50	1	60.3mm	1500	SCH. 80	STRAIGHT TEE BW	A307	pc
51	1	60.3mm	1500	SCH. 80	STRAIGHT TEE BW	A307	pc
52	1	60.3mm	1500	SCH. 80	STRAIGHT TEE BW	A307	pc
53	1	60.3mm	1500	SCH. 80	STRAIGHT TEE BW	A307	pc
54	1	60.3mm	1500	SCH. 80	STRAIGHT TEE BW	A307	pc
55	1	60.3mm	1500	SCH. 80	STRAIGHT TEE BW	A307	pc
56	1	60.3mm	1500	SCH. 80	STRAIGHT TEE BW	A307	pc
57	1	60.3mm	1500	SCH. 80	STRAIGHT TEE BW	A307	pc
58	1	60.3mm	1500	SCH. 80	STRAIGHT TEE BW	A307	pc
59	1	60.3mm	1500	SCH. 80	STRAIGHT TEE BW	A307	pc
60	1	60.3mm	1500	SCH. 80	STRAIGHT TEE BW	A307	pc
61	1	60.3mm	1500	SCH. 80	STRAIGHT TEE BW	A307	pc
62	1	60.3mm	1500	SCH. 80	STRAIGHT TEE BW	A307	pc
63	1	60.3mm	1500	SCH. 80	STRAIGHT TEE BW	A307	pc
64	1	60.3mm	1500	SCH. 80	STRAIGHT TEE BW	A307	pc
65	1	60.3mm	1500	SCH. 80	STRAIGHT TEE BW	A307	pc
66	1	60.3mm	1500	SCH. 80	STRAIGHT TEE BW	A307	pc
67	1	60.3mm	1500	SCH. 80	STRAIGHT TEE BW	A307	pc
68	1	60.3mm	1500	SCH. 80	STRAIGHT TEE BW	A307	pc
69	1	60.3mm	1500	SCH. 80	STRAIGHT TEE BW	A307	pc
70	1	60.3mm	1500	SCH. 80	STRAIGHT TEE BW	A307	pc
71	1	60.3mm	1500	SCH. 80	STRAIGHT TEE BW	A307	pc
72	1	60.3mm	1500	SCH. 80	STRAIGHT TEE BW	A307	pc
73	1	60.3mm	1500	SCH. 80	STRAIGHT TEE BW	A307	pc
74	1	60.3mm	1500	SCH. 80	STRAIGHT TEE BW	A307	pc
75	1	60.3mm	1500	SCH. 80	STRAIGHT TEE BW	A307	pc
76	1	60.3mm	1500	SCH. 80	STRAIGHT TEE BW	A307	pc
77	1	60.3mm	1500	SCH. 80	STRAIGHT TEE BW	A307	pc
78	1	60.3mm	1500	SCH. 80	STRAIGHT TEE BW	A307	pc
79	1	60.3mm	1500	SCH. 80	STRAIGHT TEE BW	A307	pc
80	1	60.3mm	1500	SCH. 80	STRAIGHT TEE BW	A307	pc
81	1	60.3mm	1500	SCH. 80	STRAIGHT TEE BW	A307	pc
82	1	60.3mm	1500	SCH. 80	STRAIGHT TEE BW	A307	pc
83	1	60.3mm	1500	SCH. 80	STRAIGHT TEE BW	A307	pc
84	1	60.3mm	1500	SCH. 80	STRAIGHT TEE BW	A307	pc
85	1	60.3mm	1500	SCH. 80	STRAIGHT TEE BW	A307	pc
86	1	60.3mm	1500	SCH. 80	STRAIGHT TEE BW	A307	pc
87	1	60.3mm	1500	SCH. 80	STRAIGHT TEE BW	A307	pc
88	1	60.3mm	1500	SCH. 80	STRAIGHT TEE BW	A307	pc
89	1	60.3mm	1500	SCH. 80	STRAIGHT TEE BW	A307	pc
90	1	60.3mm	1500	SCH. 80	STRAIGHT TEE BW	A307	pc
91	1	60.3mm	1500	SCH. 80	STRAIGHT TEE BW	A307	pc
92	1	60.3mm	1500	SCH. 80	STRAIGHT TEE BW	A307	pc
93	1	60.3mm	1500	SCH. 80	STRAIGHT TEE BW	A307	pc
94	1	60.3mm	1500	SCH. 80	STRAIGHT TEE BW	A307	pc
95	1	60.3mm	1500	SCH. 80	STRAIGHT TEE BW	A307	pc
96	1	60.3mm	1500	SCH. 80	STRAIGHT TEE BW	A307	pc
97	1	60.3mm	1500	SCH. 80	STRAIGHT TEE BW	A307	pc
98	1	60.3mm	1500	SCH. 80	STRAIGHT TEE BW	A307	pc
99	1	60.3mm	1500	SCH. 80	STRAIGHT TEE BW	A307	pc
100	1	60.3mm	1500	SCH. 80	STRAIGHT TEE BW	A307	pc

**DETECTOR EXPLORATION LTD.**

**PEMBINA 15-08 COMPRESSOR STATION**

**PIPING ISOMETRIC DEHYDRATOR AREA**

LSP: 15-08-49-08 WSM  
2008-15-08-5D

NO.	DATE	BY	CHKD	DESCRIPTION
0	2008-08-15	A.B.	D.M.K.	ISSUED FOR APPROVAL
1	2008-08-15	A.B.	D.M.K.	ISSUED FOR CONSTRUCTION

NO.	DATE	BY	CHKD	DESCRIPTION
1	2008-08-15	A.B.	D.M.K.	ISSUED FOR APPROVAL
2	2008-08-15	A.B.	D.M.K.	ISSUED FOR CONSTRUCTION



**BILL OF MATERIAL - 15-08 COMPRESSOR - Rev. 0**

MARK	QTY	SIZE	Sch.	DESCRIPTION	MATERIAL	S/F
<b>Pipe</b>						
1	2m	53.4mm	SCH. 160	PIPE SMLS	A333 6	F
2	7m	60.3mm	SCH. 80	PIPE SMLS	A106 B	F
3	48m	60.3mm	SCH. 80	PIPE SMLS	A333 6	F
4	33m	88.9mm	SCH. 40	PIPE SMLS	A106 B	F
5	31m	88.9mm	SCH. 40	PIPE SMLS	A333 6	F
6	11m	114.3mm	SCH. 40	PIPE SMLS	A333 6	F
7	35m	168.3mm	SCH. 40	PIPE SMLS	A333 6	F
<b>Flanges</b>						
10	3	60.3mm	Sch.	FLANGE RF-WN	A390 LF2 CL1	MATERIAL
11	1	88.9mm	150#	FLANGE RF-WN	A105-N	A390 LF2 CL1
12	2	88.9mm	600#	FLANGE RF-WN	A105-N	A390 LF2 CL1
13	1	114.3mm	150#	FLANGE RF-WN	A105-N	A390 LF2 CL1
14	2	168.3mm	150#	FLANGE RF-WN	A105-N	A390 LF2 CL1
15	3	60.3mm	150#	FLANGE RF-WN	A105-N	A390 LF2 CL1
16	8	60.3mm	150#	FLANGE RF-WN	A105-N	A390 LF2 CL1
17	1	60.3mm	150#	FLANGE RF-WN	A105-N	A390 LF2 CL1
18	1	88.9mm	150#	FLANGE RF-WN	A105-N	A390 LF2 CL1
19	1	88.9mm	150#	FLANGE RF-WN	A105-N	A390 LF2 CL1
20	8	88.9mm	150#	FLANGE RF-WN	A105-N	A390 LF2 CL1
21	4	114.3mm	150#	FLANGE RF-WN	A105-N	A390 LF2 CL1
22	4	168.3mm	150#	FLANGE RF-WN	A105-N	A390 LF2 CL1
23	2	168.3mm	300#	FLANGE RF-WN	A105-N	A390 LF2 CL1
<b>Weld Fittings</b>						
25	1	141.3	Sch.	TRANS PCE - 1000 LONG	SDR13.5 PE/333-6	S/F
26	1	88.9mm X 60.3mm	SCH. 40/80	CONC REDUCER BW	A234 WPB	F
27	1	88.9mm X 60.3mm	SCH. 40/80	CONC REDUCER BW	A420 WPL6	F
28	2	168.3mm X 114.3mm	SCH. 40	ECC REDUCER BW	A420 WPL6	F
29	4	114.3mm	SCH. 40	ELBOW 45 DEG BW	A420 WPL6	F
30	2	60.3mm	SCH. 80	ELBOW 90 DEG LR BW	A234 WPB	F
31	9	60.3mm	SCH. 80	ELBOW 90 DEG LR BW	A420 WPL6	F
32	5	88.9mm	SCH. 40	ELBOW 90 DEG LR BW	A234 WPB	F
33	6	88.9mm	SCH. 40	ELBOW 90 DEG LR BW	A420 WPL6	F
34	6	168.3mm	SCH. 40	ELBOW 90 DEG LR BW	A420 WPL6	F
35	2	88.9mm X 60.3mm	SCH. 40/80	REDUCING TEE BW	A234 WPB	F
36	1	168.3mm X 88.9mm	SCH. 40	REDUCING TEE BW	A420 WPL6	F
37	4	60.3mm X 60.3mm	SCH. 80	STRAIGHT TEE BW	A420 WPL6	F
38	4	60.3mm X 60.3mm	SCH. 40	STRAIGHT TEE BW	A234 WPB	F
39	2	88.9mm X 88.9mm	SCH. 40	STRAIGHT TEE BW	A420 WPL6	F
40	2	88.9mm X 88.9mm	SCH. 40	STRAIGHT TEE BW	A234 WPB	F
41	1	114.3mm X 114.3mm	SCH. 40	STRAIGHT TEE BW	A420 WPL6	F
42	3	168.3mm X 168.3mm	SCH. 40	STRAIGHT TEE BW	A420 WPL6	F
43	1	114.3mm X 114.3mm	SCH. 40	STRAIGHT TEE BW, BARRED	A420 WPL6	F
44	1	88.9mm	SCH. 40/3.2mm WT	TRANS PCE - 1000 LONG	Z245.1 GR.	F
45	1	141.3 X 114.3	SCH. 40	TRANS PCE - 1000 LONG	A420 WPL6	F
<b>Screwed and Socket Weld Fittings</b>						
50	1	60.3mm X 33.4mm	RATING	CONCENTRIC SWAGE - BLET/SE	MATERIAL	S/F
51	1	60.3mm X 48.3mm	SCH. 80	CONCENTRIC SWAGE - BLET/SE	A333 6	F
52	2	60.3mm X 48.3mm	SCH. 80	CONCENTRIC SWAGE - BLET/SE	A106 B	F
53	1	88.9mm X 33.4mm	SCH. 40/80	CONCENTRIC SWAGE - BLET/SE	A333 6	F
54	2	33.4mm	3000#	ELBOW 90 DEG THREADED	A106 B	F
55	1	21.3mm	3000#	INSULATING UNION THREADED	A390 LF2 CL1	F
56	1	33.4mm	3000#	INSULATING UNION THREADED	A390 LF2 CL1	F
57	2	21.3mm	SCH. 160	NIPPLE SMLS - 100mm LG TBE	A333 6	F
58	3	21.3mm	SCH. 80	NIPPLE SMLS - 100mm LG TBE	A333 6	F

6/4/2009-19 PM

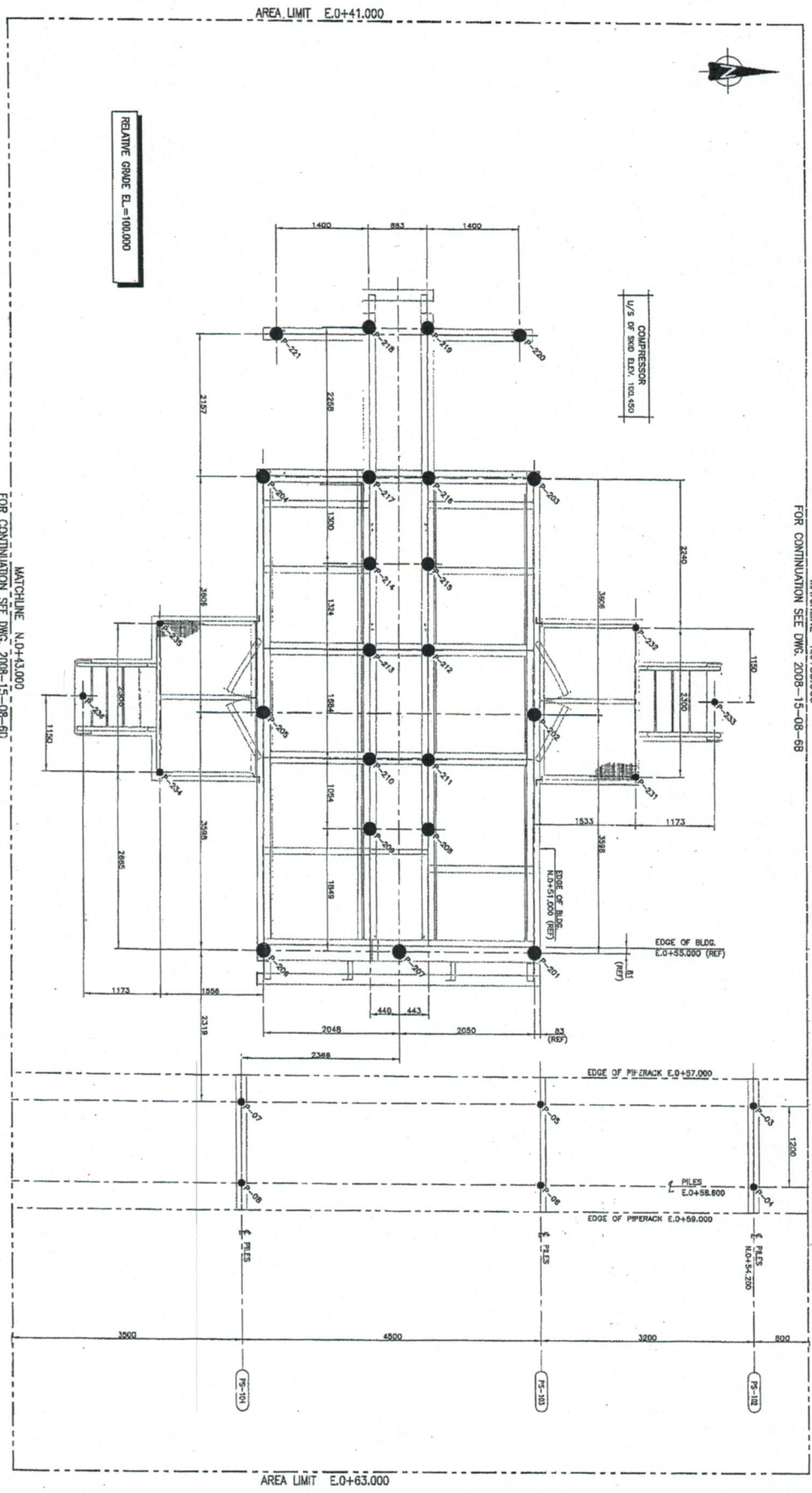
QTY	SIZE	DESCRIPTION	RATING	MATERIAL	Tag	MATERIAL
3	33.4mm	SCH. 180	150#	NIPPLE SMLS - 100mm LG TUBE	A333.6	F
4	33.4mm	SCH. 80	150#	NIPPLE SMLS - 100mm LG TUBE	A333.6	F
1	48.3mm	SCH. 80	150#	NIPPLE SMLS - 100mm LG TUBE	A108.8	F
2	48.3mm	SCH. 80	150#	NIPPLE SMLS - 100mm LG TUBE	A333.6	F
5	33.4mm	3000#	3000#	PLUS THREADED SOLID HEX HEAD	A350 LF2 CL1	F
1	21.3mm ON 88.9mm	3000#	3000#	THREDOLET	A350 LF2 CL1	F
3	33.4mm ON 88.9mm	3000#	3000#	THREDOLET	A350 LF2 CL1	F
2	21.3mm ON 114.3mm	3000#	3000#	THREDOLET	A350 LF2 CL1	F
2	33.4mm ON 114.3mm	3000#	3000#	THREDOLET	A350 LF2 CL1	F
<b>Gaskets</b>						
QTY	SIZE	DESCRIPTION	RATING	DESCRIPTION	MATERIAL	S/F
13	60.3mm	150#	150#	GASKET RF 1/8" SPIRAL WOUND	316 SS	F
3	89.3mm	150#	150#	GASKET RF 1/8" SPIRAL WOUND	316 SS	F
3	89.3mm	150#	150#	GASKET RF 1/8" SPIRAL WOUND	316 SS	F
10	89.3mm	150#	150#	GASKET RF 1/8" SPIRAL WOUND	316 SS	F
7	114.3mm	150#	150#	GASKET RF 1/8" SPIRAL WOUND	316 SS	F
8	168.3mm	150#	150#	GASKET RF 1/8" SPIRAL WOUND	316 SS	F
2	168.3mm	300#	300#	GASKET RF 1/8" SPIRAL WOUND	316 SS	F
<b>Bolts</b>						
QTY	SIZE	DESCRIPTION	RATING	DESCRIPTION	MATERIAL	S/F
2 SETS	3/4" X 4.3/4"	STUD BOLTS CW/2 NUTS-12/SET	150#	A193 B7M W/A194 2HM	F	F
1 SETS	5/8" X 3.1/2"	STUD BOLTS CW/2 NUTS-4/SET	150#	A193 B7M W/A194 2HM	F	F
2 SETS	5/8" X 3.1/2"	STUD BOLTS CW/2 NUTS-4/SET	150#	A193 B7M W/A194 2HM	F	F
4 SETS	5/8" X 3.1/4"	STUD BOLTS CW/2 NUTS-4/SET	150#	A193 B7M W/A194 2HM	F	F
8 SETS	5/8" X 3.1/4"	STUD BOLTS CW/2 NUTS-4/SET	150#	A193 B7M W/A194 2HM	F	F
1 SETS	3/4" X 4.1/2"	STUD BOLTS CW/2 NUTS-4/SET	150#	A193 B7M W/A194 2HM	F	F
7 SETS	3/4" X 4"	STUD BOLTS CW/2 NUTS-4/SET	150#	A193 B7M W/A194 2HM	F	F
10 SETS	3/4" X 5"	STUD BOLTS CW/2 NUTS-4/SET	150#	A193 B7M W/A194 2HM	F	F
7 SETS	5/8" X 3.1/2"	STUD BOLTS CW/2 NUTS-4/SET	150#	A193 B7M W/A194 2HM	F	F
1 SETS	7/8" X 5.3/4"	STUD BOLTS CW/2 NUTS-4/SET	150#	A193 B7M W/A194 2HM	F	F
<b>Valves</b>						
QTY	SIZE	DESCRIPTION	RATING	DESCRIPTION	MATERIAL	Tag
3	114.3mm	150#	150#	BALL VALVE FULL PORT RF	A352 LCC	A352 LCC
1	60.3mm	150#	150#	BALL VALVE RED PORT RF	A216 WCB	A216 WCB
2	60.3mm	150#	150#	BALL VALVE RED PORT RF	A352 LCC	A352 LCC
1	88.9mm	150#	150#	BALL VALVE RED PORT RF	A352 LCC	A352 LCC
2	88.9mm	600#	600#	BALL VALVE RED PORT RF	A352 LCC	A352 LCC
2	168.3mm	150#	150#	BALL VALVE RED PORT RF	A352 LCC	A352 LCC
4	33.4mm	1500#WOG	1500#WOG	BALL VALVE THREADED	A350 LF2 CL1	A350 LF2 CL1
1	33.4mm	3000#WOG	3000#WOG	BALL VALVE THREADED	A350 LF2 CL1	A350 LF2 CL1
1	48.3mm	1500#WOG	1500#WOG	BALL VALVE THREADED	A105-N	A105-N
2	48.3mm	150#	150#	BALL VALVE THREADED	A350 LF2 CL1	A350 LF2 CL1
1	60.3mm	600#	600#	CHECK VALVE SWING RF	A216 WCB	A216 WCB
2	88.9mm	600#	600#	CHECK VALVE SWING RF	A352 LCC	A352 LCC
1	114.3mm	150#	150#	CHECK VALVE SWING RF	A352 LCC	A352 LCC
1	168.3mm	150#	150#	CHECK VALVE SWING RF	A352 LCC	A352 LCC
1	88.9mm	150#	150#	CHECK VALVE SWING RF	A-105	A-105
1	60.3mm	150#	150#	CLIP GATE VALVE THREADED	A352 LCC	A352 LCC
1	33.4mm	800#	800#	GLOBE VALVE RF	A350 LF2 CL1	A350 LF2 CL1
4	21.3mm	6000#	6000#	GLOBE VALVE THREADED	A350 LF2 CL1	A350 LF2 CL1
<b>Supports and Misc</b>						
QTY	SIZE	DESCRIPTION	MATERIAL	S/F		
9	60.3mm	CLAMPED TYPE PIPE SHOE	CS	F		
11	88.9mm	CLAMPED TYPE PIPE SHOE	CS	F		
2	114.3mm	CLAMPED TYPE PIPE SHOE	CS	F		
9	168.3mm	CLAMPED TYPE PIPE SHOE	CS	F		
1	88.9mm	QUICK CONNECTOR - THREADED	CS	F		
1	168.3mm	SPECTACLE BLIND - 150#RF	CS	F		











DATE	BY	CHECKED	TECH. APPROVAL	CLIENT APPROVAL	SIGNATURE
2008-03-21	A.B.	D.W. KUTZY	D.W. KUTZY	RON ALEXANDER	
2008-03-10					
2008-05-18					
2008-03-10					

DATE	BY	CHECKED	TECH. APPROVAL	CLIENT APPROVAL	SIGNATURE
2008-03-21	A.B.	D.W. KUTZY	D.W. KUTZY	RON ALEXANDER	
2008-03-10					
2008-05-18					
2008-03-10					

**DETECTOR EXPLORATION LTD.**

**PEMBINA 15-08 COMPRESSOR STATION**  
**PILE LAYOUT**  
**COMPRESSOR AREA**

SCALE: 1:20

DATE: 2008-15-08-6C

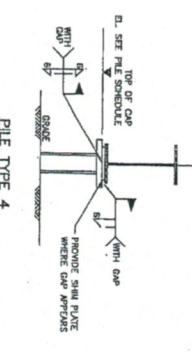
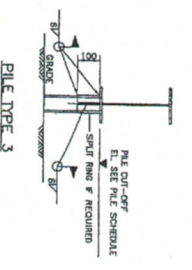
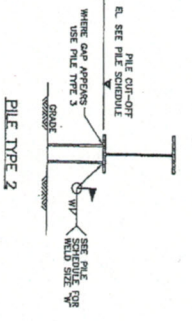
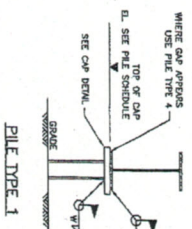
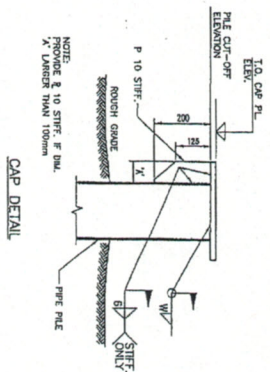
LSR: 15-08-49-08 WSM











DRAWING NO.	REFERENCE DRAWINGS	REVISION DESCRIPTION	REV.	DATE	CHKD BY	APP'D BY
		ISSUED FOR APPROVAL	A	08.03.05	DMK	MA
		ISSUED FOR CONSTRUCTION	0	08.03.05	DMK	MA

ENGINEERS & DESIGN GROUPS			
REV.	DATE	CHKD BY	APP'D BY
01	2008-03-21	D.W. KITZT	D.W. KITZT
02	2008-03-05	D.W. KITZT	RON ALEXANDER
03	2008-03-05	D.W. KITZT	RON ALEXANDER
04	2008-03-10	D.W. KITZT	RON ALEXANDER

**DETECTOR EXPLORATION LTD.**

**PEMBINA 15-08 COMPRESSOR STATION**

**PILE DETAILS**

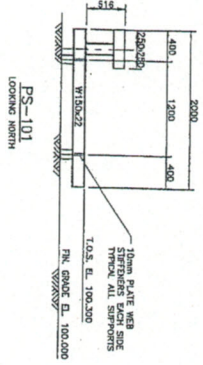
SCALE: AS SHOWN

LISTD: 15-08-48-06 RSM

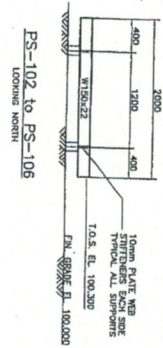
TRD NO: 2008-15-08-6F

REV: 0

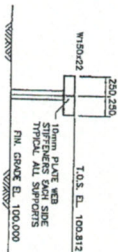




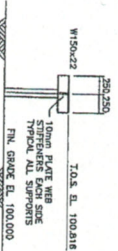
PS-101  
LOOKING NORTH



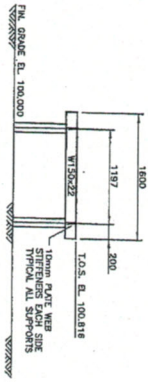
PS-102 to PS-106  
LOOKING NORTH



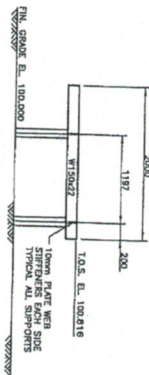
PS-107  
LOOKING EAST



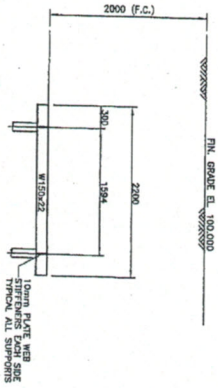
PS-108 & 109  
LOOKING EAST



PS-110  
LOOKING EAST



PS-111  
LOOKING EAST



PS-112 & PS-113  
LOOKING EAST

**STRUCTURAL STEEL NOTES:**

1. ALL STEEL AND FABRICATION/ERECTION SHALL CONFORM TO:
  - a) CSA STANDARD S16-1 LIMIT STATES DESIGN OF STEEL STRUCTURES.
  - b) CSC HANDBOOK OF STEEL CONSTRUCTION.
  - c) CSA - HANDBOOK OF STEEL CONSTRUCTION.
 AND SHALL INCLUDE ALL REFERENCES INCLUDED IN THE ABOVE.
2. MATERIALS SHALL CONFORM TO THE FOLLOWING GRADES OF CSA G40.21
  - a) HOLLOW STRUCTURAL SECTIONS 350W
  - b) PLATE AND ROLLED SECTIONS 300W
  - c) ALL OTHER SECTIONS 300W
 AND SHALL INCLUDE ALL REFERENCES INCLUDED IN THE ABOVE.
3. ALL WELTERS SHALL HAVE ALL TEST CERTIFICATES, OR SHALL HAVE WELDING SHALL BE SOLID CONSTRUCTION, AND SHALL BE WELDED TO THE GRADE OF MATERIAL. E-480-X ELECTRODES SHALL BE USED.

**DETECTOR EXPLORATION LTD.**

PERVINA 15-08 COMPRESSOR STATION  
PIPE SUPPORT/PIPERACK DETAILS

REV	REVISION DESCRIPTION	BY	DATE	CHKD	APPR
A	ISSUED FOR APPROVAL	AB	08.05.05	DK	RA
0	ISSUED FOR CONSTRUCTION	AB	08.05.05	DK	RA

REV	DATE	CHKD	APPR
BY	DATE	CHKD	APPR
AB	2008-01-21	DK	RA
AB	2008-05-05	DK	RA
AB	2008-05-05	DK	RA
AB	2008-05-10	DK	RA

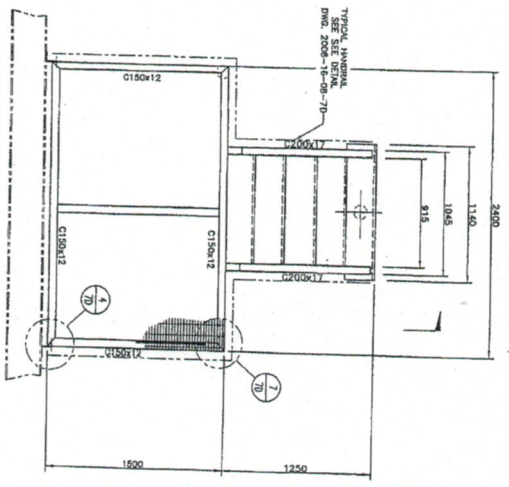
  

REV	DATE	CHKD	APPR
BY	DATE	CHKD <td>APPR </td>	APPR
AB	2008-01-21	DK	RA
AB	2008-05-05	DK	RA
AB	2008-05-05	DK	RA
AB	2008-05-10	DK	RA

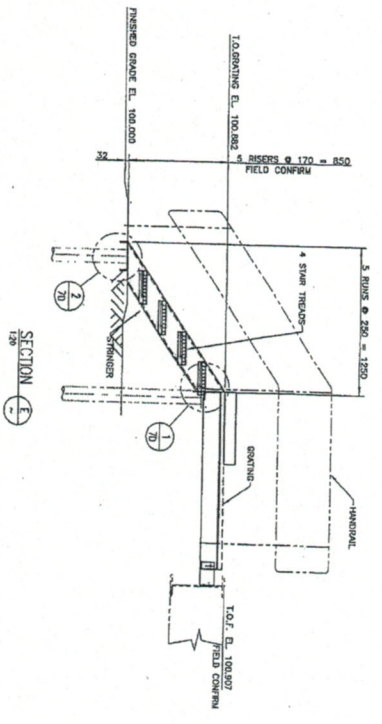
  

REV	DATE	CHKD	APPR
BY	DATE	CHKD <td>APPR </td>	APPR
AB	2008-01-21	DK	RA
AB	2008-05-05	DK	RA
AB	2008-05-05	DK	RA
AB	2008-05-10	DK	RA

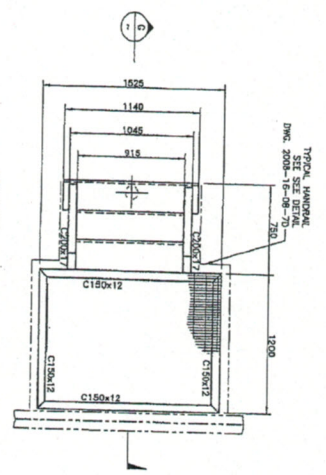
SCALE AS SHOWN  
 L&D: 15-08-08 WSM  
 2008-15-08-7A



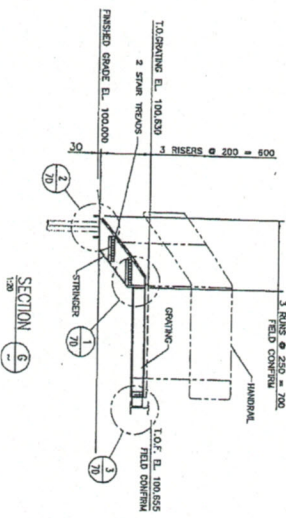
ACCESS PLATFORMS FOR  
COMPRESSOR DOOR.  
(2 REQUIRED - SEE DWG. NO. 2008-16-08-4C  
(SEE DWG. 2008-16-08-4C FOR ORIENTATIONS)



SECTION  
E-1



ACCESS PLATFORM FOR  
INLET SEPARATOR  
(1 REQUIRED - SEE DWG. NO. 2008-16-08-4B)



SECTION  
G-1

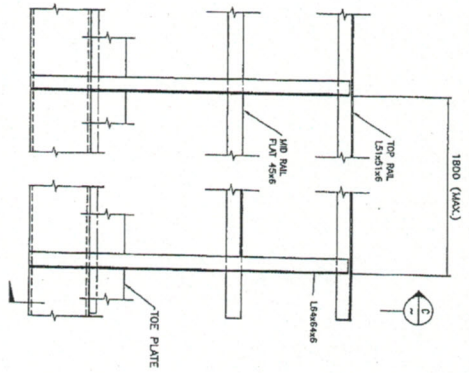
DRAWING NO.	REFERENCE DRAWINGS	REV.	REVISION DESCRIPTION	BY	DATE	CHKD	APPR
		A	ISSUED FOR APPROVAL	A.B.	08.05.06	DMK	RA
		0	ISSUED FOR CONSTRUCTION	LB	08.05.05	DMK	RA

BY	DATE	CHKD	APPR
A.B.	08.05.06	DMK	RA
LB	08.05.05	DMK	RA

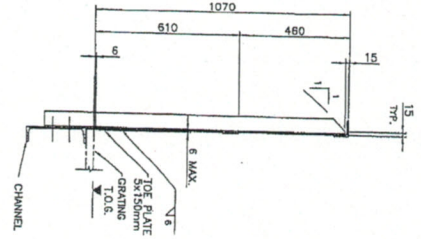
DETECTOR EXPLORATION LTD.  
PEMBINA 15-08 COMPRESSOR STATION  
STAIRS AND PLATFORM DETAILS  
COMPRESSOR & INLET SEPARATOR BLDGS.  
SCALE AS SHOWN  
DWG NO 2008-15-08-7B



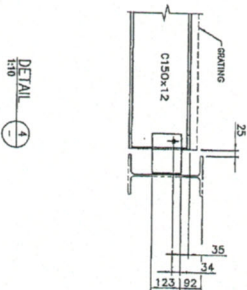




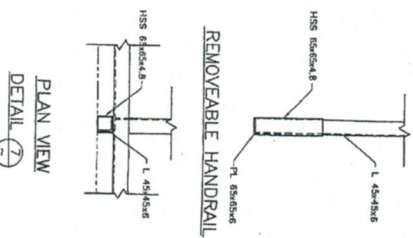
TYPICAL HANDRAIL



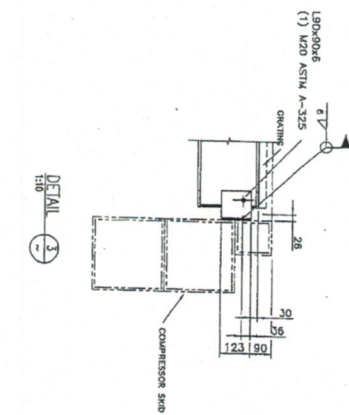
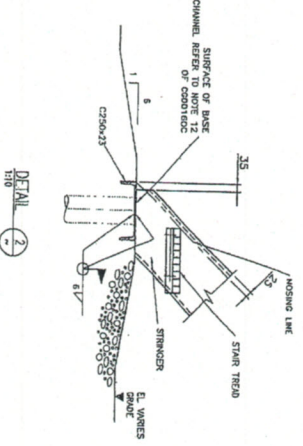
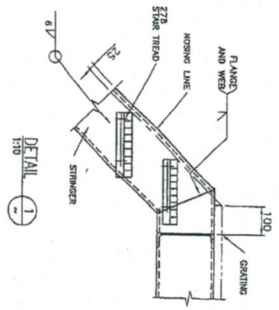
SECTION C-C



DETAIL 1-1



PLAN VIEW  
DETAIL 7-7



DRAWING NO	REFERENCE DRAWINGS	REV	REASON DESCRIPTION	BY	DATE	CHKD	APPR
		A	ISSUED FOR APPROVAL	A.S	08.05.23	DNK	DNK
		0	ISSUED FOR CONSTRUCTION	LB	08.05.23	DNK	DNK

DESIGNER		CHECKED		TECH. APPROVAL		CLIENT APPROVAL		STRESS	
BY	2008-03-21	DNK	2008-03-21	DNK	2008-03-21	DNK	2008-03-21	DNK	2008-03-21

ENGINEERS & PROJECT STUDIOS	
BY	2008-03-21

**DETECTOR EXPLORATION LTD.**

**PEMBINA 15-08 COMPRESSOR STATION**

**STRUCTURAL STEEL DETAILS**

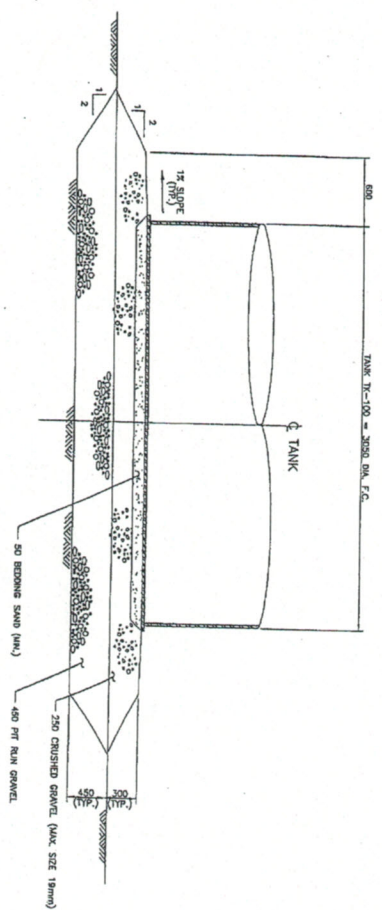
SCALE: AS SHOWN

LSD: 15-08-08 WSH

DWG NO: 2008-15-08-7D







TANK TK-100

REV	REVISION DESCRIPTION	BY	DATE	CHNO APPR
0	ISSUED FOR APPROVAL	AJ	08.05.05	DMK DMK
1	ISSUED FOR CONSTRUCTION	LJ	08.05.29	DMK RA

ENGINEERS & PERMIT SIGNS	
BY	DATE
AJ	08.05.05
LJ	08.05.29

BY	DATE	BY	DATE	BY	DATE	BY	DATE
AJ	2008-03-21	DMK	2008-06-5	DMK	2008-06-5	DMK	2008-06-5
LJ	2008-03-21	DMK	2008-06-5	DMK	2008-06-5	DMK	2008-06-5

**DETECTOR EXPLORATION LTD.**

**PEMBINA 15-08 COMPRESSOR STATION  
STORAGE TANK FOUNDATION DETAILS**

SCALE: AS SHOWN

DATE: 15-08-08 WSL

JOB NO: 2008-15-08-7E

- NOTES:**
- THE CONTRACTOR SHALL REMOVE ALL TOPSOIL AND GRAVEL MATERIAL FROM THE AREA TO BE OBTAINED BY THE NEW TANK BASE AND EXCAVATE TO THE LEVEL, REFORMED TO 500mm BENEATH.
  - THE SUBGRADE SHALL BE COVERED BELOW FROST LEVEL AND RE-COMPACTED TO 98% STANDARD PROCTOR MAXIMUM DRY DENSITY (SOUND).
  - THE SUBGRADE SHALL BE FROOF FILLER (2 PASSES EACH DIRECTION) AND ALL SOFT SPOTS SHALL BE CORRECTED AND BACKFILLED WITH ROAD BASE PIT RUN GRAVEL AND COMPACTED TO 98% S.W.D.
  - TANK BASE SHALL BE 400mm MINIMUM THICKNESS OF ROAD BASE PIT RUN GRAVEL PLACED IN 150mm MAXIMUM THICKNESS HORIZONTAL LAYERS AND COMPACTED TO 98% S.W.D.
  - THE TANK PAD SHALL BE 200mm MINIMUM THICKNESS OF MAX. 19mm CRUSHED GRAVEL PLACED IN 150mm MAXIMUM THICKNESS HORIZONTAL LAYERS AND COMPACTED TO 98% S.W.D.
  - TANK PAD SURFACE SHALL BE 50mm MINIMUM THICKNESS BEDDING SAND TOPPING COMPACTED TO 98% S.W.D.
  - TANK PADS SHALL BE PROTECTED FROM RUN AND SNOW WIND TYPERS UNTIL THE TANKS ARE INSTALLED IN THE EVENT OF COLD WINTER WIND PADS SHALL BE PROTECTED FROM FROST PENETRATION.
  - ROAD BASE PIT RUN GRAVEL, FROOF FILLER, SUBGRADE SHALL BE LOCAL ORIGINATE MATERIAL OR FREE FROM DELICIOUS MATERIAL. IT SHALL CONFORM TO THE FOLLOWING SPECIFICATION REQUIREMENTS.
- | METRIC SIEVE | METRIC SIEVE |
|--------------|--------------|
| 50           | 100          |
| 75           | 150          |
| 100          | 200          |
| 150          | 250          |
| 200          | 300          |
| 250          | 350          |
| 300          | 400          |
| 350          | 450          |
| 400          | 500          |
| 450          | 550          |
| 500          | 600          |
- GRAVEL SANDS, BEDDING SANDS, FROOF FILLER, SUBGRADE, COMPOSED OF FINABLE PARTICLES AND FREE FROM FROOF FILLER, SOFT OR FLAKED PARTICLES, SHALLS LOCAL ORIGINATE MATERIAL OR ANY OTHER MATERIALS, IT SHALL CONFORM TO THE FOLLOWING SPECIFICATION REQUIREMENTS.
  - SUBGRADE SHALL BE INSPECTED AND APPROVED BY A PROFESSIONAL GEOTECHNICAL ENGINEER FOR A BEARING CAPACITY OF 120 kPa.
  - CONSTRUCTION TESTING BY THIRD PARTY.







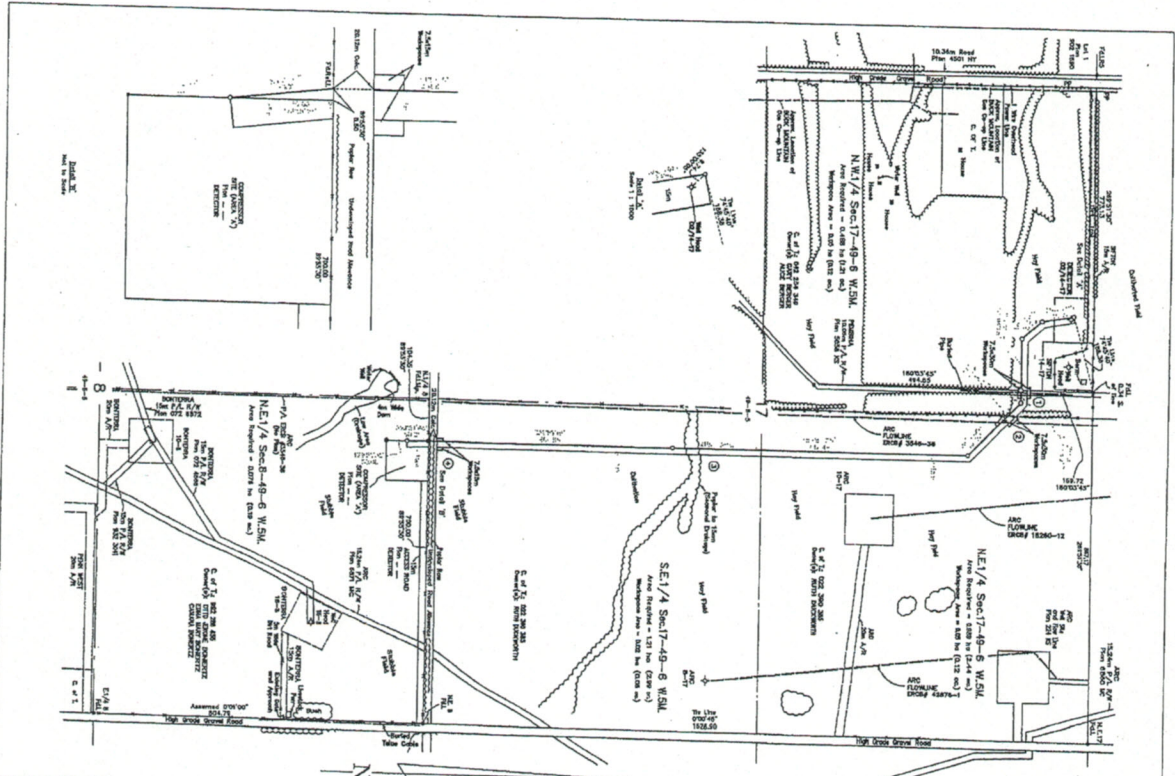


TABLE OF CONTENTS	
1	GENERAL
2	RIGHT OF WAY
3	EASEMENTS
4	ADJACENT LANDS
5	CONVEYANCES
6	CONTRACTS

### CONSTRUCTION DRAWING

**LEGEND**

ALL DISTANCES ARE IN METERS UNLESS OTHERWISE SPECIFIED. ALL DIMENSIONS ARE TO CENTERLINE UNLESS OTHERWISE SPECIFIED. ALL DIMENSIONS ARE TO CENTERLINE UNLESS OTHERWISE SPECIFIED. ALL DIMENSIONS ARE TO CENTERLINE UNLESS OTHERWISE SPECIFIED.

**NOTES:**

1. THIS DRAWING IS A PART OF THE PROJECT AND IS NOT TO BE USED SEPARATELY.
2. THE CONTRACTOR SHALL BE RESPONSIBLE FOR OBTAINING ALL NECESSARY PERMITS AND EASEMENTS.
3. THE CONTRACTOR SHALL BE RESPONSIBLE FOR OBTAINING ALL NECESSARY PERMITS AND EASEMENTS.
4. THE CONTRACTOR SHALL BE RESPONSIBLE FOR OBTAINING ALL NECESSARY PERMITS AND EASEMENTS.
5. THE CONTRACTOR SHALL BE RESPONSIBLE FOR OBTAINING ALL NECESSARY PERMITS AND EASEMENTS.

NO.	DATE	DESCRIPTION
1	02/14/17	ISSUED FOR PERMITTING
2	02/14/17	ISSUED FOR PERMITTING
3	02/14/17	ISSUED FOR PERMITTING
4	02/14/17	ISSUED FOR PERMITTING
5	02/14/17	ISSUED FOR PERMITTING

**DETECTOR EXPLORATION LTD.**

FROM 02/14-17-49-6 W.S. TO COMPRESSOR IN NE 1/4-8-49-6 W.S.

PIPE LINE RIGHT OF WAY

IN

NE 1/4 SEC. 8, E 1/2 AND N.W. 1/4 SEC. 17

TWP. 49 RGE. 6 W. 5 M.

**SCALE 1 : 5000**

0 10 20 30 40 50 METERS

BRAZEAL COUNTY  
ALBERTA - 2008

**NORTHCAN SURVEYS LTD.**

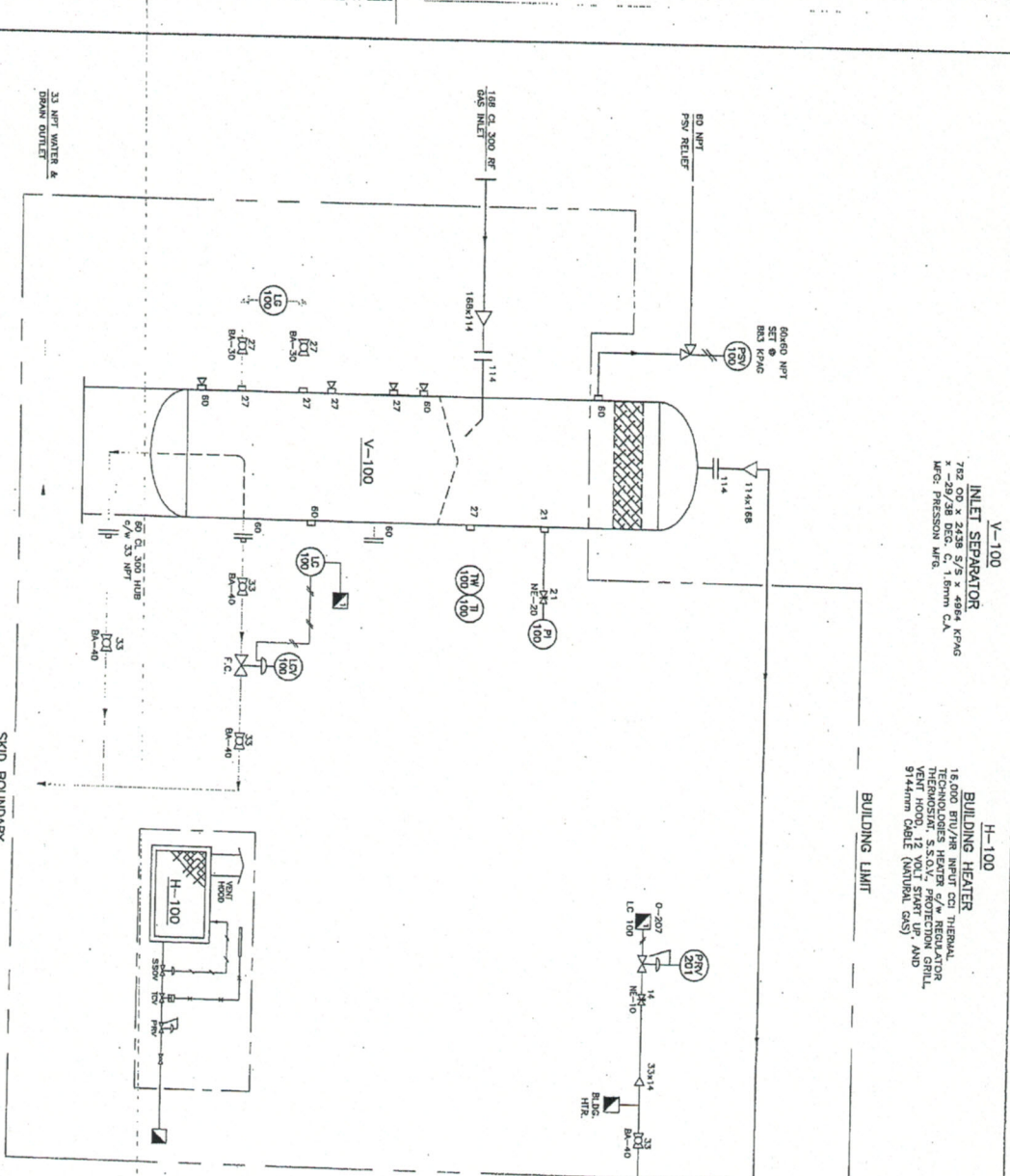
100, Ave. 278, Calgary, AB  
T2C 1Y8  
208-1008

CONTRACT NO.  
JOB NO.  
0813841-1









**V-100**  
**INLET SEPARATOR**  
 702 OD x 2436 S/S x 4964 KPMG  
 MFG: PRESSION MFG.  
 16,000 BTU/HR INPUT CGI THERMAL TECHNOLOGIES HEATER w/4 REGIONAL TECHNOLOGY SSOV PROTECTION GRILL  
 16,000 BTU/HR INPUT CGI THERMAL TECHNOLOGIES HEATER w/4 REGIONAL TECHNOLOGY SSOV PROTECTION GRILL  
 9144mm Centre (Nairobi, Kenya)

**NOTES:**  
 1. ALL TUBING TO BE 8.25mm OD, ELECTROPOLISHED 316L STAINLESS STEEL TUBING WITH 316L STAINLESS STEEL FITTINGS.

REV	DESCRIPTION	DATE	BY
A	REVISION	04/28/08	Y.P.

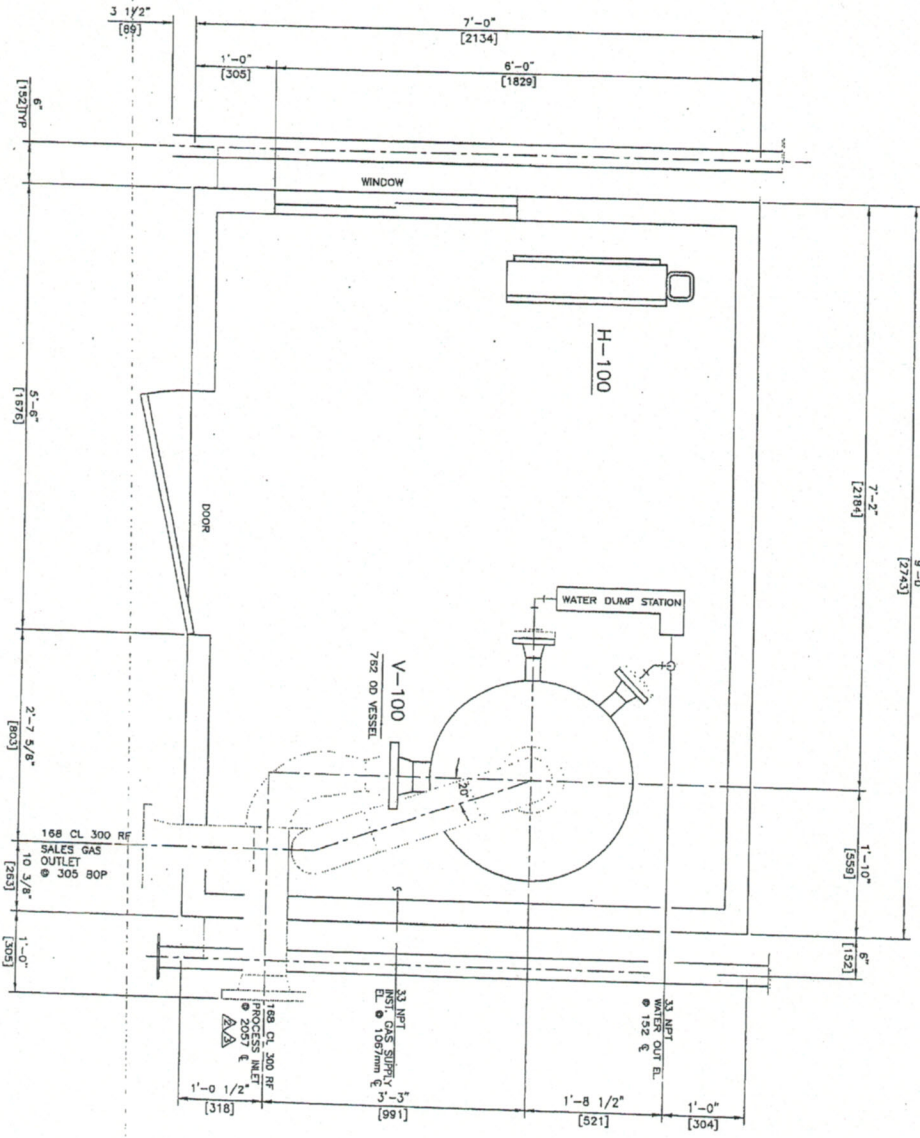
**RUSHTON**  
 OIL & GAS EQUIPMENT (1993) LTD.  
 16-8-49-08 VSM

DATE	REV	Y.P.	SCALE	SHEET NO.	TOTAL SHEETS
04/17/08	1	Y.P.	MIS	16-8-49-08	08

**MECHANICAL FLOW DIAGRAM**  
 30" OD SEPARATOR SKID PACKAGE (SWEET)

TAG #s	QTY	DESCRIPTION
LC 100	1	Fisher L2 liquid level controller, 60 MNPT composition, range setting, vertical PVC diaphragm, sweet treatment gas MAWP 25,850 kPa(g).
LG 100	1	Penberthy 16R 4R relex level gauge, 172mm visible height, CW-27 NPT 330U range valves, MAWP 14,460 kPa(g) @ 38 °C.
LCV 100	1	33 NPT Fisher 687 control valve, 19.5mm (3/4") trim, CW size 34 actuator, Fail Closed, 41-241 liquid signal (pressure/position).
PI 100	1	Hydra Probe, bottom mount pressure transmitter, 21 MNPT, 0-0.343 kPa(g), 102 face, dual scale, 316 stainless steel tube and socket, liquid filled.
PRV 200	1	ITT Fluid Technology Corp. Coniflow CG86X pressure regulator, 14 NPT CW Manual trim knob, 0.207 kPa(g) range, Non-vented double sweet.
PSV 100	1	Walsmark W8502 RS-150 relief valve, NACE primary, 60 x 60 NPT, seat seal, cast steel body, set @ 884 kPa(g), 200-1024 kPa(g) pressure range, Goughenish G134-27 bimetallic lever, set 1.2mm.
TI 100	1	18 to 121 °C, dual scale, 76 mm dia, 102 stem.
TIW 100	1	Narrow Film thermometer, 21 x 27 x 102 g/L, A.I.S.I. 316 SS, MAWP 48,285 kPa(g).
BA 40	4	Meridian D60918 68 port ball valve, 1" NPT, A216 grade WCB body, R-gonal.
BA 30	2	Dyna-quip regular port ball valve, 27 NPT, ASTM A105N body, RPTFE seats, ASTM A276-316 stem, PTFE stem packing, MAWP 13,790 kPa(g), NACE or equal.
NE 20	1	PQV-408LWV relief valve, 21 MNPT x 21 FNPT, barstock A108 body, 303 stainless steel needle point stem and seat CW on stem seal packing, MAWP 41,370 kPa(g).
NE 10	1	Century CMZ-3 FZ27-B-V needle valve, 14 MNPT x 14 FNPT, A108 body, 303 stainless steel needle point stem and seat CW on stem seal packing, MAWP 41,370 kPa(g).
H 100	1	16,000 BTU/HR input CGI Thermal Technologies heater, dw/regulator, thermocouple, SSOV, protection grill, vent hood, 12 VDC ball and 30P feedthroughs.





**GENERAL NOTES:**

1. ALL ELEVATIONS ARE FROM TOP OF SKID FLOOR.
2. MAIN PIPING PLAN TO BE READ IN CONJUNCTION WITH MECHANICAL FLOW DIAGRAM.
3. ALL BUTTWELD PIPING TO BE BUILT IN ACCORDANCE WITH THE LATEST EDITION OF B31.3 PRESSURE PIPING CODE.
4. ALL BUTTWELD PIPING 0.0625" C.A. TO BE
  - CL 3000 - 21 & SMALLER
  - 300# ANSR: 60 - SCH 80
- MATERIALS: PIPING - SA-108B SML's  
 FLANGES - SA-108B  
 BOLTS - SA-193-B7  
 NUTS - SA-194-2H  
 GASKET - 304 SS FLEXITALLIC
5. ALL TOL/EOL FITTINGS TO BE:
  - CL 6000 - 21 & SMALLER
  - CL 3000 - 27 AND LARGER
6. ALL BUTTWELD PIPING TO BE 10X RADIOGRAPHED AND HYDROTESTED TO 1.5 TIMES OF DESIGN PRESSURE.
7. ALL NPT PIPING MATERIALS SCH 80.
8. ALL INSTRUMENT TUBING TO BE 9.5mm<sup>2</sup> ELECTROGALVANIZED C/W CADMIUM PLATED CARBON STEEL SWAGelok TUBE FITTINGS.
9. ALL INSTRUMENT GAS THREADED PIPING TO BE LEAK TESTED TO 800 KPA.
10. ALL OPENINGS TO BE COVERED PRIOR TO SHIPMENT.
  - (1) SHOP COAT OF PRIMER
  - (2) SHOP COAT OF FINISH COAT:
- VESSEL: RUSHTON GREY  
 SKID FLOOR: RUSHTON GREY  
 PIPING: RUSHTON GREY
12. SHIPPING DIMENSIONS:
  - 2540 (8'-4") x 3353 (11'-0")
  - x 4115 (13'-6") HIGH
- WEIGHT: 4500kg (9,920 LBS)

**BUILDING NOTES:**

SIZE & TYPE: 2143 x 2743 x 2438 to 2591 SHED ROOF  
 EXTERIOR: 22 GA GALVANIZED  
 INTERIOR: 24 GA FLUTED ALUMINUM  
 INSULATION: R12 (ROOF & WALL)  
 DOOR: (1) 914 x 2134 STEEL DOOR C/W PAINT HARDWARE & WEATHERSTRIPPING.  
 WINDOW: (1) 965 x 914 DOUBLE GLAZED SLIDING C/W SCREEN & WEATHERSTRIPPING.  
 VENTILATION: (2) 305 x 305 LOUVRES C/W SLIDE & SCREEN  
 OTHERS: CUT-OUTS

(1) REV'D		DWG. NO.		REFERENCE DRAWINGS		REV		DESCRIPTION		DATE BY		 RUSHION QUALITY CONTROL INSPECTION (1991) LTD.	
TIME CARD		C-2934-PP				A		REVISED MESSAGE TO ORIGINAL LAYOUT		04/21/08 Y.S.			
CUSTOMER: DETECTOR RESOURCES LOCATION: 116-8-49-06 WSM													DATE: 04/17/08 REV: 1 Y.S.
MAIN PIPING PLAN 762 OD SEPARATOR SKID PACKAGE (SWEET)													SCALE: 1/2"=1'-0" DRAWN BY: Y.S. CHECKED BY: Y.S. C-2934-C



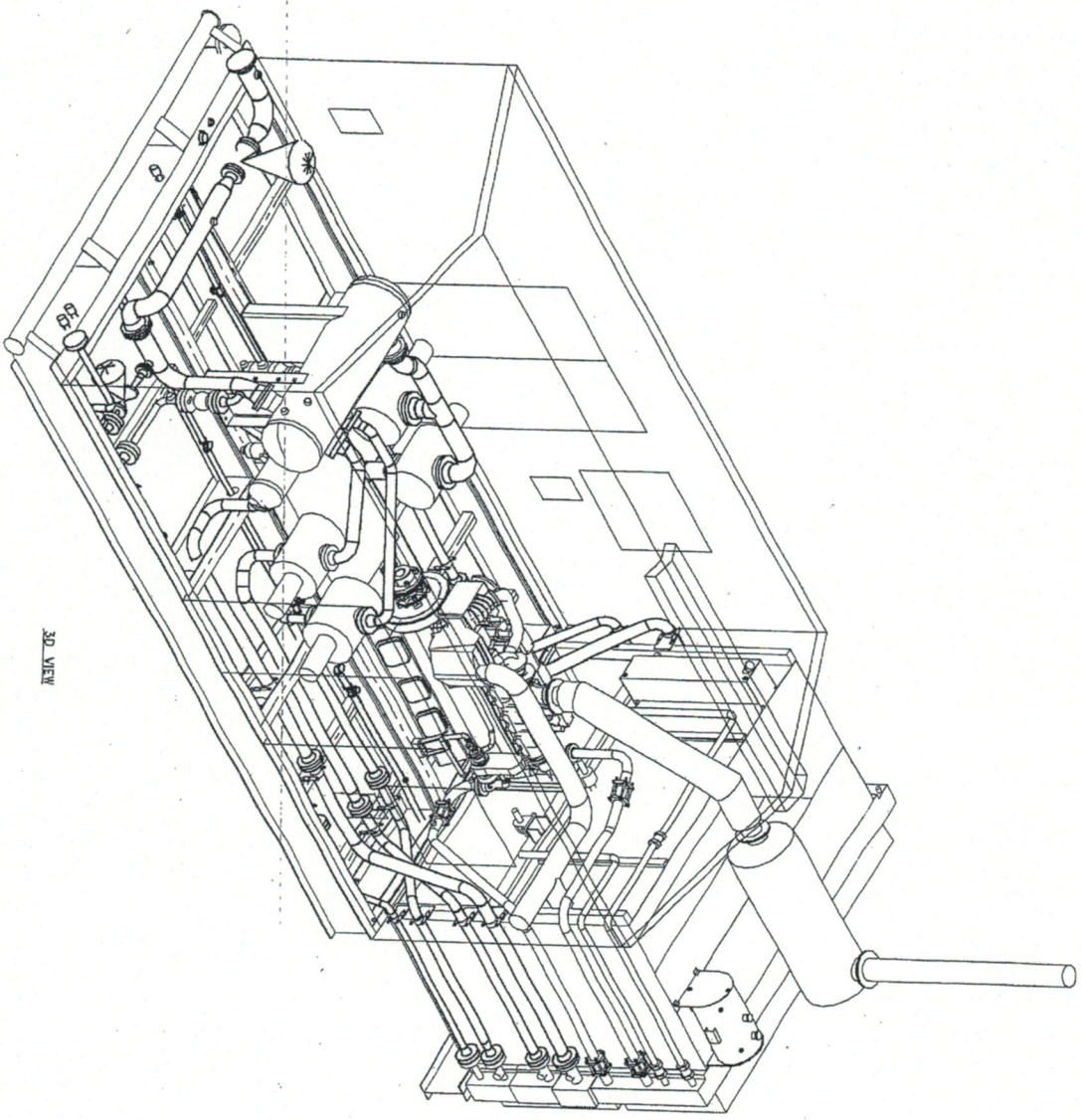












3D VIEW

REV	DESCRIPTION	DATE	BY	CHECKED
0	ISSUE FOR CONSTRUCTION	05/27/08	NS	
1	FOR APPROVAL	05/27/08	NS	

**BTB Compressors**

TITLE: GENERAL ARRANGEMENT-3D VIEW  
 PROJECT: 0504370-0017  
 DRAWN BY: NS  
 CHECKED BY: NS

FOR: DESKTOP/3D

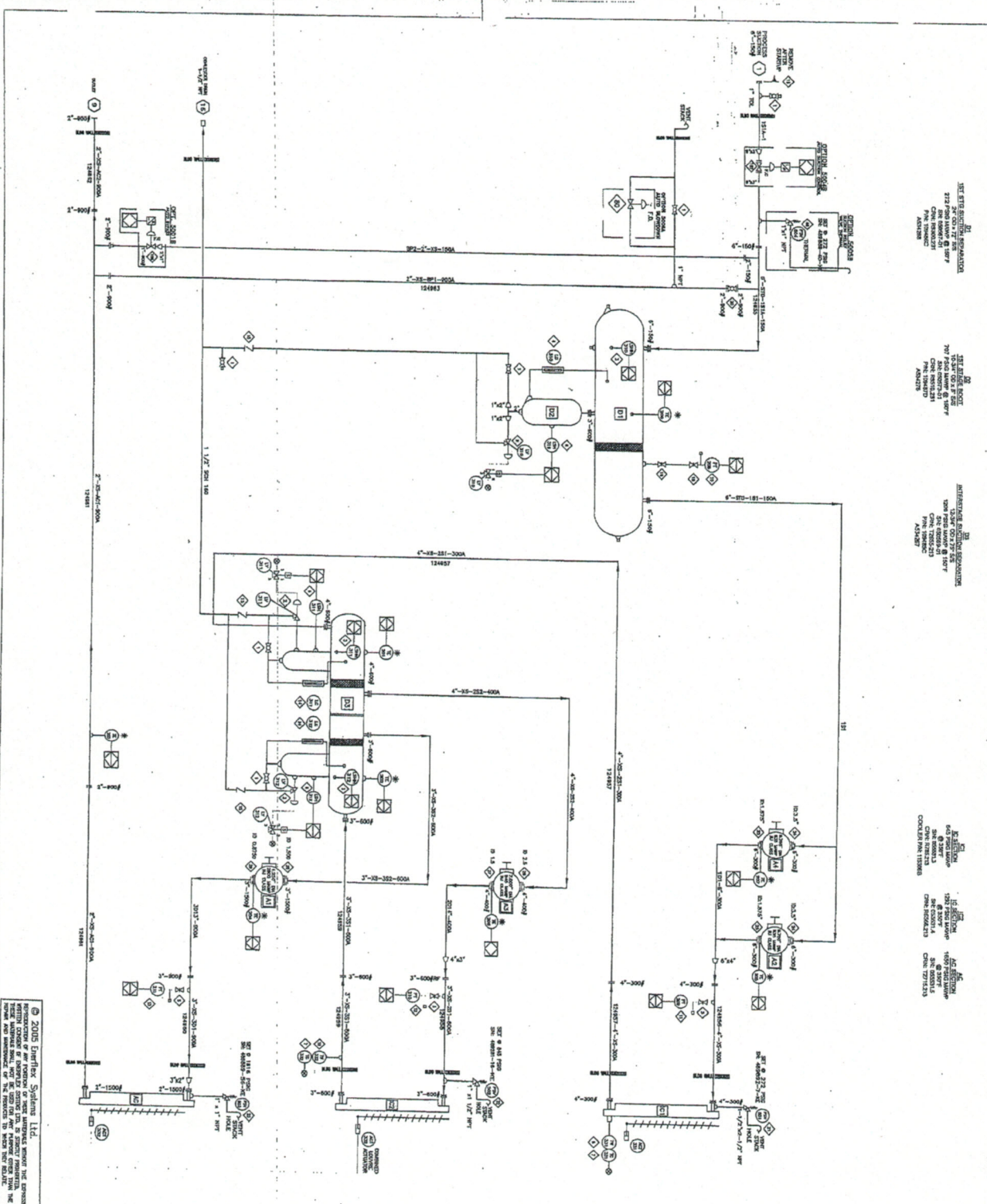
CONSULTANT: PERKINS ENGINEERING CORP.

SCALE: AS SHOWN  
 SHEET NO: 10  
 TOTAL SHEETS: 10

DATE: 05/27/08  
 DRAWN BY: NS  
 CHECKED BY: NS

PROJECT NO: 0504370-0017  
 SHEET NO: 10





1. 1/2" 304 SS 140

1. 1/2" 304 SS 140

1. 1/2" 304 SS 140

1. 1/2" 304 SS 140

© 2005 Emflex Systems Ltd.  
 ALL RIGHTS RESERVED. NO PART OF THIS DOCUMENT MAY BE REPRODUCED OR TRANSMITTED IN ANY FORM OR BY ANY MEANS, ELECTRONIC OR MECHANICAL, INCLUDING PHOTOCOPYING, RECORDING, OR BY ANY INFORMATION STORAGE AND RETRIEVAL SYSTEM, WITHOUT PERMISSION IN WRITING FROM Emflex Systems Ltd.

**BILL OF MATERIAL**

ITEM NO.	QTY	DESCRIPTION
1	1	1. 1/2" 304 SS 140
2	1	1. 1/2" 304 SS 140
3	1	1. 1/2" 304 SS 140
4	1	1. 1/2" 304 SS 140
5	1	1. 1/2" 304 SS 140
6	1	1. 1/2" 304 SS 140
7	1	1. 1/2" 304 SS 140
8	1	1. 1/2" 304 SS 140
9	1	1. 1/2" 304 SS 140
10	1	1. 1/2" 304 SS 140
11	1	1. 1/2" 304 SS 140
12	1	1. 1/2" 304 SS 140
13	1	1. 1/2" 304 SS 140
14	1	1. 1/2" 304 SS 140
15	1	1. 1/2" 304 SS 140
16	1	1. 1/2" 304 SS 140
17	1	1. 1/2" 304 SS 140
18	1	1. 1/2" 304 SS 140
19	1	1. 1/2" 304 SS 140
20	1	1. 1/2" 304 SS 140
21	1	1. 1/2" 304 SS 140
22	1	1. 1/2" 304 SS 140
23	1	1. 1/2" 304 SS 140
24	1	1. 1/2" 304 SS 140
25	1	1. 1/2" 304 SS 140
26	1	1. 1/2" 304 SS 140
27	1	1. 1/2" 304 SS 140
28	1	1. 1/2" 304 SS 140
29	1	1. 1/2" 304 SS 140
30	1	1. 1/2" 304 SS 140

**OPTIONS**

ITEM NO.	QTY	DESCRIPTION
1	1	1. 1/2" 304 SS 140
2	1	1. 1/2" 304 SS 140
3	1	1. 1/2" 304 SS 140
4	1	1. 1/2" 304 SS 140
5	1	1. 1/2" 304 SS 140
6	1	1. 1/2" 304 SS 140
7	1	1. 1/2" 304 SS 140
8	1	1. 1/2" 304 SS 140
9	1	1. 1/2" 304 SS 140
10	1	1. 1/2" 304 SS 140
11	1	1. 1/2" 304 SS 140
12	1	1. 1/2" 304 SS 140
13	1	1. 1/2" 304 SS 140
14	1	1. 1/2" 304 SS 140
15	1	1. 1/2" 304 SS 140
16	1	1. 1/2" 304 SS 140
17	1	1. 1/2" 304 SS 140
18	1	1. 1/2" 304 SS 140
19	1	1. 1/2" 304 SS 140
20	1	1. 1/2" 304 SS 140
21	1	1. 1/2" 304 SS 140
22	1	1. 1/2" 304 SS 140
23	1	1. 1/2" 304 SS 140
24	1	1. 1/2" 304 SS 140
25	1	1. 1/2" 304 SS 140
26	1	1. 1/2" 304 SS 140
27	1	1. 1/2" 304 SS 140
28	1	1. 1/2" 304 SS 140
29	1	1. 1/2" 304 SS 140
30	1	1. 1/2" 304 SS 140

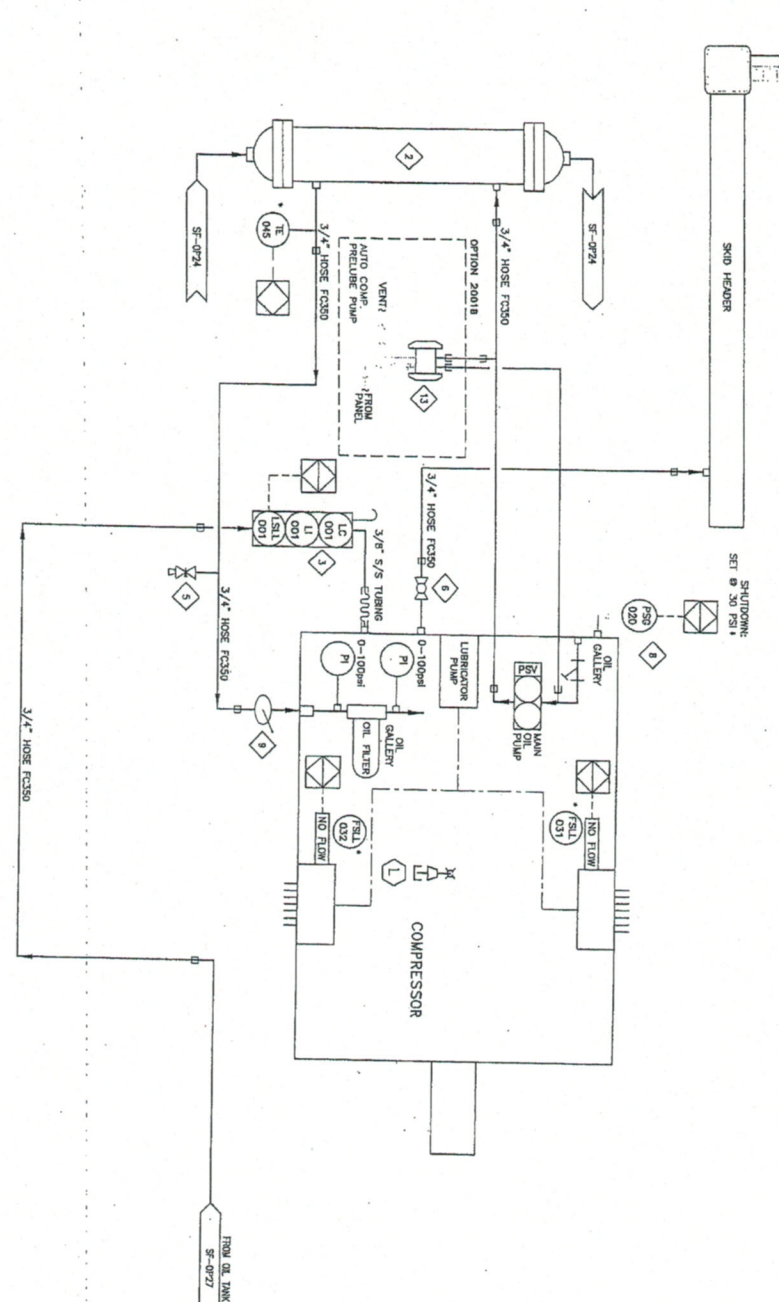
\* INCLUDED IN WORKING DRAWINGS

REV	DATE	DESCRIPTION	BY	CHKD
1	01/07/11	ISSUED FOR APPROVAL	JM	AM
2	02/07/11	ISSUED FOR APPROVAL	JM	AM
3	03/07/11	ISSUED FOR APPROVAL	JM	AM
4	04/07/11	ISSUED FOR APPROVAL	JM	AM
5	05/07/11	ISSUED FOR APPROVAL	JM	AM
6	06/07/11	ISSUED FOR APPROVAL	JM	AM
7	07/07/11	ISSUED FOR APPROVAL	JM	AM
8	08/07/11	ISSUED FOR APPROVAL	JM	AM
9	09/07/11	ISSUED FOR APPROVAL	JM	AM
10	10/07/11	ISSUED FOR APPROVAL	JM	AM
11	11/07/11	ISSUED FOR APPROVAL	JM	AM
12	12/07/11	ISSUED FOR APPROVAL	JM	AM
13	01/08/12	ISSUED FOR APPROVAL	JM	AM
14	02/08/12	ISSUED FOR APPROVAL	JM	AM
15	03/08/12	ISSUED FOR APPROVAL	JM	AM
16	04/08/12	ISSUED FOR APPROVAL	JM	AM
17	05/08/12	ISSUED FOR APPROVAL	JM	AM
18	06/08/12	ISSUED FOR APPROVAL	JM	AM
19	07/08/12	ISSUED FOR APPROVAL	JM	AM
20	08/08/12	ISSUED FOR APPROVAL	JM	AM
21	09/08/12	ISSUED FOR APPROVAL	JM	AM
22	10/08/12	ISSUED FOR APPROVAL	JM	AM
23	11/08/12	ISSUED FOR APPROVAL	JM	AM
24	12/08/12	ISSUED FOR APPROVAL	JM	AM
25	01/09/13	ISSUED FOR APPROVAL	JM	AM
26	02/09/13	ISSUED FOR APPROVAL	JM	AM
27	03/09/13	ISSUED FOR APPROVAL	JM	AM
28	04/09/13	ISSUED FOR APPROVAL	JM	AM
29	05/09/13	ISSUED FOR APPROVAL	JM	AM
30	06/09/13	ISSUED FOR APPROVAL	JM	AM

**BTB Compressors**

4701 47 ST SE, CALVERT AL, ONDOLA, TN 381  
 TEL: 1 (404) 236-8900 FAX: 1 (404) 274-0287  
 WWW.EMFLEX.COM  
 PROCESS FLOW  
 DESIGN STUDIO  
 AUTOMATED  
 JOB NO: 050603  
 REV: 1.1.1  
 01/07/11

VENT  
STACK  
BUILDING  
WALL



**BILL OF MATERIAL**

ITEM QTY	EPY CODE	DESCRIPTION
2	104657	COOLER, LUBE OIL (INTERNAL, HANSEN, DV-102L-9)
3	107989	CONTROLLER, OIL LEVEL C/W ELECTRIC SWITCH, XP CSA C/W BLOWER (MOROL, MCE-3)
5	110142	VALVE, METRIC OIL SAMPLE 1/2" NPT, BRASS (MOROL, B-4HM)
6	102973	W/VE, BALL, 3/4" NPT, 2000# WOG, PR. 316SS, INCH C/W (MOROL, CI-8075M)
9	116178	SWITCHGAUGE, PRESSURE, FN, 2-1/2" DIA, 0-100 PSI, 1/4" NPT (MOROL, ASPT100)
9	1	MANUAL FILLING PUMP
BILL OF MATERIAL: M 119902 : ASSSEMBLY, COMPRESSOR OIL, 8200/250/270/400/500		
DATE-TIME EXPANDED: 2004-05-14-16:59		

**OPTIONS**

11	1	107479	OPTION 2001B AUTO COMPRESSOR PRE-LUBE PUMP
PUMP, DIMENSIONAL, 1" NPT, ALUMINUM, BSN, FOC-1000 (MOROL, Z/MAG/69/69/200)			
BILL OF MATERIAL: M 106993 : OPTION 2001B, AUTO COMPRESSOR PRE-LUBE, RC2000 B			
DATE-TIME EXPANDED: 2004-05-20-17:15			

**NOTES:**  
\* INCLUDED IN CONTROL PANEL

REV	DESCRIPTION	DATE	DRAWN BY	CHECKED BY
2	UPDATED DRAWING	07/08/14	JHL	
1	AS BUILT	05/11/04	MZ	
0	ISSUED FOR CONSTRUCTION	05/07/23	MZ	

**BTB Compressors**

400 47 St. SE, Oklaer, AL, Canada, T8A 3A1  
TEL: 1 (403) 258-6600 FAX: 1 (403) 278-0387  
www.btbcompressors.com

**SERVICE FLOW**  
COMPRESSOR OIL SYSTEM (OP20)  
B530 SWEET  
EIGANNA/ELL

**CONSULTANT:**  
DATE: 04/09/21  
SCALE: NTS

**DESIGN BY:** LSD-D-85-0/93-P-7  
**DATE:** 05/07/23  
**SCALE:** NTS

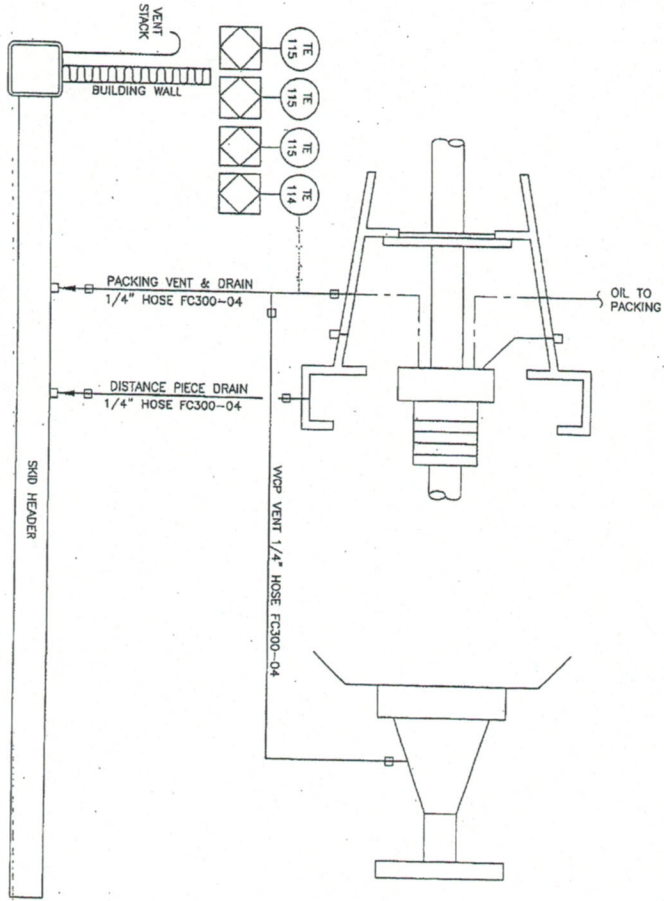
**DWG. No.:** 0505933  
**OP #:** 20

OPTION SELECTION	OPTION NUMBER	DESCRIPTION
<input type="checkbox"/>	2001A	AUTO COMPRESSOR PRE-LUBE AUTRONIC PANEL B SERIES
<input checked="" type="checkbox"/>	2001B	AUTO COMPRESSOR PRE-LUBE RC2000 PANEL B SERIES
<input type="checkbox"/>	2002A	SEPARATE COMPRESSOR LUBE OIL TANK

© 2004 Enerflex Systems Ltd. All rights reserved. No part of this document may be reproduced without the prior written permission of Enerflex Systems Ltd. or its authorized representative.

2004-05-20-17:15 - Revision: 001 - 1500/250/270/400/500 - Building May 15, 2004 - 150000





© 2004 Enerflex Systems Ltd.  
 APPROVED FOR THE PROVISION OF THIS SERVICE SUBJECT TO THE TERMS AND CONDITIONS OF THE AGREEMENT BETWEEN THE CUSTOMER AND ENERFLEX SYSTEMS LTD. ALL RIGHTS RESERVED. ENERFLEX SYSTEMS LTD. IS NOT RESPONSIBLE FOR ANY DAMAGE TO PROPERTY OR PERSONS ARISING FROM THE USE OF THIS SERVICE.

CONDUCTOR: JIMMY/DLL  
 FILE: 14-01-0000-21(04)  
 DATE: 04/19/04  
 REVISION: 04/19/04  
 SHEET: 21 OF 21

REV	DESCRIPTION	DATE	BY	CHECKED
1	AS-BUILT	04/19/04	UNC	JA
2	REVISION	04/20/04	UNC	UNC

**BTB Compressors**  
 4700 47 St. E. Calgary, AL, CANADA, T2B 3B1  
 TEL: 1 (403) 248-6800 FAX: 1 (403) 274-0827  
 WWW.ENERFLEX.COM

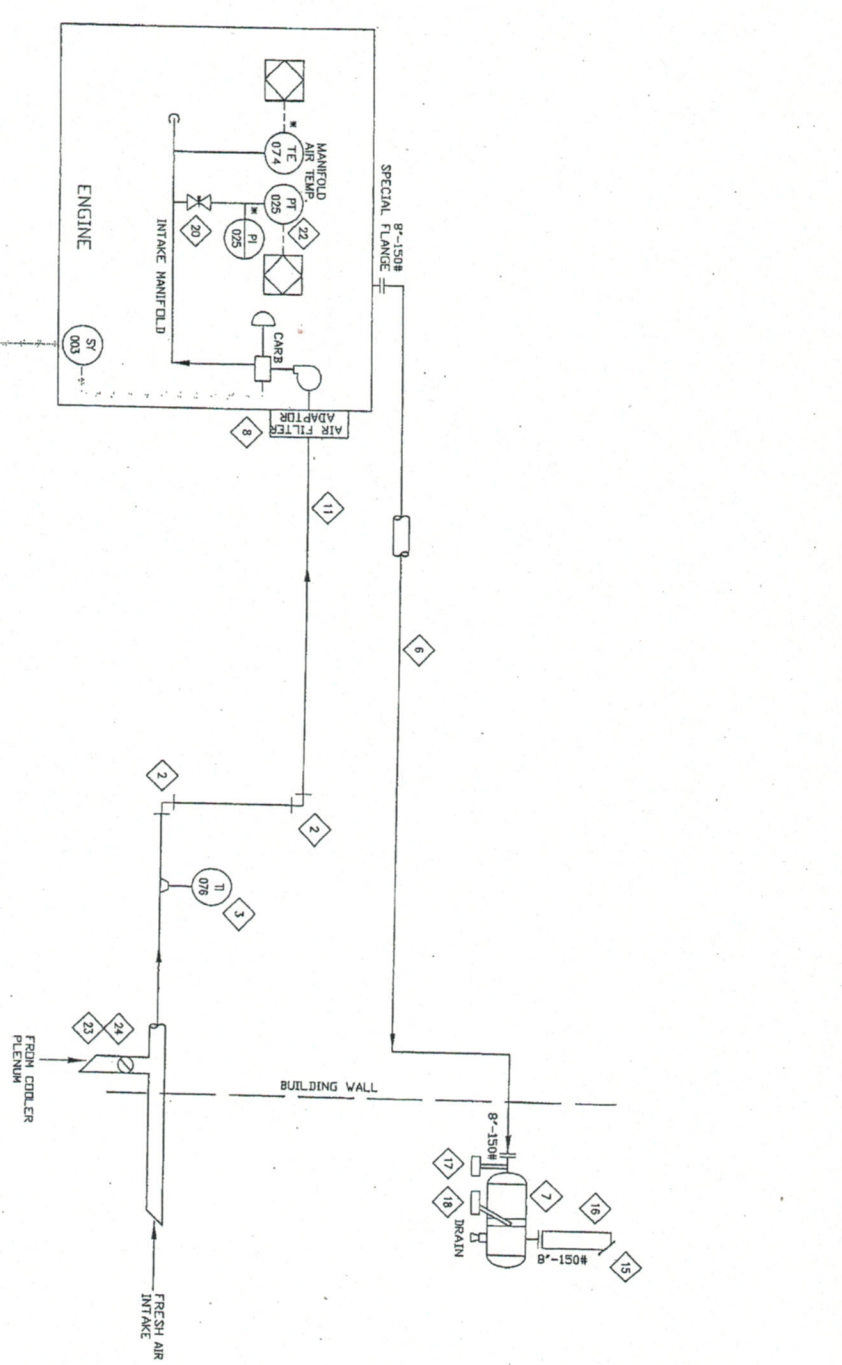
TITLE: PACKING VENT & DRAIN (OX 125)  
 FILE: 14-01-0000-21(04)  
 SHEET: 21 OF 21

ENR-4-4-4-4-4-4-4  
 100 No. 010153  
 SF-103083-21









**BILL OF MATERIAL**

ITEM QTY	EQ CODE	DESCRIPTION
2	30364	ELBOW, 90 DEG, 8" DIA, 1/2" THICKNESS, 1/2" DIA
2	30375	FLANGE, 1/2" DIA, 1/2" THICKNESS, 1/2" DIA
3	102725	EXHAUST LINE, SS, 2-1/2" DIA, 1/2" THICKNESS, 37000
6	102725	EXHAUST LINE, SS, 2-1/2" DIA, 1/2" THICKNESS, 37000
7	102725	EXHAUST LINE, SS, 2-1/2" DIA, 1/2" THICKNESS, 37000
8	102725	EXHAUST LINE, SS, 2-1/2" DIA, 1/2" THICKNESS, 37000
11	102725	EXHAUST LINE, SS, 2-1/2" DIA, 1/2" THICKNESS, 37000
12	102725	EXHAUST LINE, SS, 2-1/2" DIA, 1/2" THICKNESS, 37000
13	102725	EXHAUST LINE, SS, 2-1/2" DIA, 1/2" THICKNESS, 37000
14	102725	EXHAUST LINE, SS, 2-1/2" DIA, 1/2" THICKNESS, 37000
15	102725	EXHAUST LINE, SS, 2-1/2" DIA, 1/2" THICKNESS, 37000
16	102725	EXHAUST LINE, SS, 2-1/2" DIA, 1/2" THICKNESS, 37000
17	102725	EXHAUST LINE, SS, 2-1/2" DIA, 1/2" THICKNESS, 37000
18	102725	EXHAUST LINE, SS, 2-1/2" DIA, 1/2" THICKNESS, 37000
19	102725	EXHAUST LINE, SS, 2-1/2" DIA, 1/2" THICKNESS, 37000
20	102725	EXHAUST LINE, SS, 2-1/2" DIA, 1/2" THICKNESS, 37000
21	102725	EXHAUST LINE, SS, 2-1/2" DIA, 1/2" THICKNESS, 37000
22	102725	EXHAUST LINE, SS, 2-1/2" DIA, 1/2" THICKNESS, 37000
23	102725	EXHAUST LINE, SS, 2-1/2" DIA, 1/2" THICKNESS, 37000
24	102725	EXHAUST LINE, SS, 2-1/2" DIA, 1/2" THICKNESS, 37000
25	102725	EXHAUST LINE, SS, 2-1/2" DIA, 1/2" THICKNESS, 37000

NOTES:  
\* SUPPLIED BY VENDOR

REV	DATE	DESCRIPTION	BY	CHECKED
1	09/11/04	AS BUILT	UNC	AL
0	09/07/04	ISSUE FOR CONSTRUCTION	NZ	LB

**BTB Compressors**

4290 67 ST. SE. CALGARY, AL. CANADA, T2B 3H1  
TEL: 1 (403) 258-8500 FAX: 1 (403) 278-0207  
www.bttb.com

**SERVICE FLOW**  
**AIR AND EXHAUST**  
B530/B530X (OP26)  
ENCANA/EIL

**CONSULTANT:**  
LSP-d-85-0/83-P-7  
JOB No.: 050693  
DWG. No.:  
SCALE: SF-050693-26  
DATE: 09/06/10  
DESIGN BY: AFT/BB  
DATE: 09/06/10  
DRAWN BY: AFT/BB  
DATE: 09/06/10

OPTION SELECTION	OPTION NUMBER	OPTION DESCRIPTION
<input type="checkbox"/>	2606A	ENGINE MOUNTED CYLINDER EXHAUST PYROMETER B530/530X
<input type="checkbox"/>		
<input type="checkbox"/>		
<input type="checkbox"/>		

© 2004 Emwitek Systems Ltd. ALL RIGHTS RESERVED. NO PARTS OR COMPONENTS MAY BE REPRODUCED OR TRANSMITTED IN ANY FORM OR BY ANY MEANS, ELECTRONIC OR MECHANICAL, INCLUDING PHOTOCOPYING, RECORDING, OR BY ANY INFORMATION STORAGE AND RETRIEVAL SYSTEM. THE DESIGN AND CONSTRUCTION OF THIS PROJECT IS THE PROPERTY OF EMWITEK SYSTEMS LTD. THE COMPANY SHALL BE RESPONSIBLE FOR THE PROTECTION OF THIS PROJECT TO WHOM IT BELONGS.





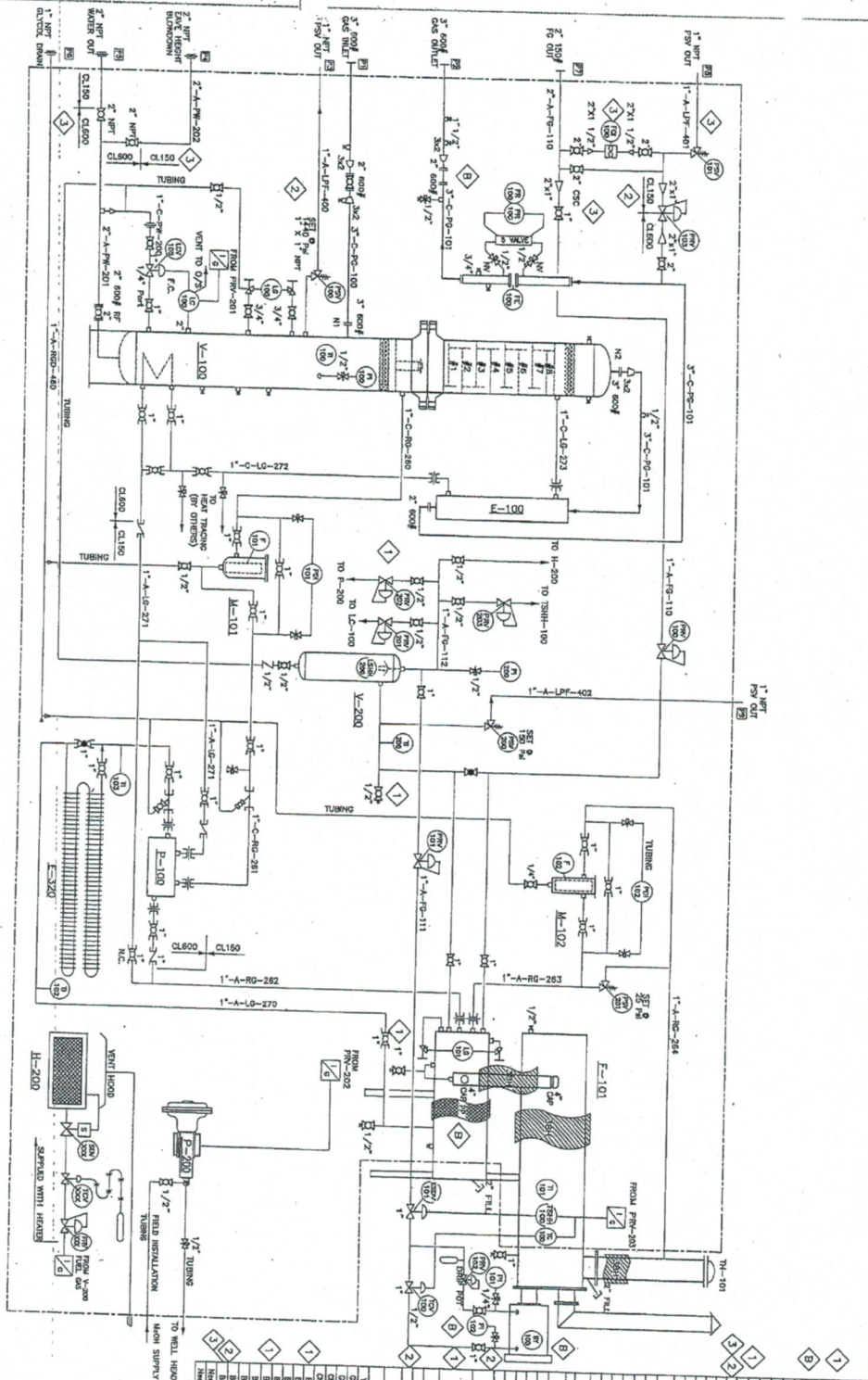












ITEM NO.	DESCRIPTION	QTY.
1	CONDUIT	1
2	1/2" DIA. STEEL PIPE	1
3	1/2" DIA. STEEL PIPE	1
4	1/2" DIA. STEEL PIPE	1
5	1/2" DIA. STEEL PIPE	1
6	1/2" DIA. STEEL PIPE	1
7	1/2" DIA. STEEL PIPE	1
8	1/2" DIA. STEEL PIPE	1
9	1/2" DIA. STEEL PIPE	1
10	1/2" DIA. STEEL PIPE	1
11	1/2" DIA. STEEL PIPE	1
12	1/2" DIA. STEEL PIPE	1
13	1/2" DIA. STEEL PIPE	1
14	1/2" DIA. STEEL PIPE	1
15	1/2" DIA. STEEL PIPE	1
16	1/2" DIA. STEEL PIPE	1
17	1/2" DIA. STEEL PIPE	1
18	1/2" DIA. STEEL PIPE	1
19	1/2" DIA. STEEL PIPE	1
20	1/2" DIA. STEEL PIPE	1
21	1/2" DIA. STEEL PIPE	1
22	1/2" DIA. STEEL PIPE	1
23	1/2" DIA. STEEL PIPE	1
24	1/2" DIA. STEEL PIPE	1
25	1/2" DIA. STEEL PIPE	1
26	1/2" DIA. STEEL PIPE	1
27	1/2" DIA. STEEL PIPE	1
28	1/2" DIA. STEEL PIPE	1
29	1/2" DIA. STEEL PIPE	1
30	1/2" DIA. STEEL PIPE	1
31	1/2" DIA. STEEL PIPE	1
32	1/2" DIA. STEEL PIPE	1
33	1/2" DIA. STEEL PIPE	1
34	1/2" DIA. STEEL PIPE	1
35	1/2" DIA. STEEL PIPE	1
36	1/2" DIA. STEEL PIPE	1
37	1/2" DIA. STEEL PIPE	1
38	1/2" DIA. STEEL PIPE	1
39	1/2" DIA. STEEL PIPE	1
40	1/2" DIA. STEEL PIPE	1
41	1/2" DIA. STEEL PIPE	1
42	1/2" DIA. STEEL PIPE	1
43	1/2" DIA. STEEL PIPE	1
44	1/2" DIA. STEEL PIPE	1
45	1/2" DIA. STEEL PIPE	1
46	1/2" DIA. STEEL PIPE	1
47	1/2" DIA. STEEL PIPE	1
48	1/2" DIA. STEEL PIPE	1
49	1/2" DIA. STEEL PIPE	1
50	1/2" DIA. STEEL PIPE	1
51	1/2" DIA. STEEL PIPE	1
52	1/2" DIA. STEEL PIPE	1
53	1/2" DIA. STEEL PIPE	1
54	1/2" DIA. STEEL PIPE	1
55	1/2" DIA. STEEL PIPE	1
56	1/2" DIA. STEEL PIPE	1
57	1/2" DIA. STEEL PIPE	1
58	1/2" DIA. STEEL PIPE	1
59	1/2" DIA. STEEL PIPE	1
60	1/2" DIA. STEEL PIPE	1
61	1/2" DIA. STEEL PIPE	1
62	1/2" DIA. STEEL PIPE	1
63	1/2" DIA. STEEL PIPE	1
64	1/2" DIA. STEEL PIPE	1
65	1/2" DIA. STEEL PIPE	1
66	1/2" DIA. STEEL PIPE	1
67	1/2" DIA. STEEL PIPE	1
68	1/2" DIA. STEEL PIPE	1
69	1/2" DIA. STEEL PIPE	1
70	1/2" DIA. STEEL PIPE	1
71	1/2" DIA. STEEL PIPE	1
72	1/2" DIA. STEEL PIPE	1
73	1/2" DIA. STEEL PIPE	1
74	1/2" DIA. STEEL PIPE	1
75	1/2" DIA. STEEL PIPE	1
76	1/2" DIA. STEEL PIPE	1
77	1/2" DIA. STEEL PIPE	1
78	1/2" DIA. STEEL PIPE	1
79	1/2" DIA. STEEL PIPE	1
80	1/2" DIA. STEEL PIPE	1
81	1/2" DIA. STEEL PIPE	1
82	1/2" DIA. STEEL PIPE	1
83	1/2" DIA. STEEL PIPE	1
84	1/2" DIA. STEEL PIPE	1
85	1/2" DIA. STEEL PIPE	1
86	1/2" DIA. STEEL PIPE	1
87	1/2" DIA. STEEL PIPE	1
88	1/2" DIA. STEEL PIPE	1
89	1/2" DIA. STEEL PIPE	1
90	1/2" DIA. STEEL PIPE	1
91	1/2" DIA. STEEL PIPE	1
92	1/2" DIA. STEEL PIPE	1
93	1/2" DIA. STEEL PIPE	1
94	1/2" DIA. STEEL PIPE	1
95	1/2" DIA. STEEL PIPE	1
96	1/2" DIA. STEEL PIPE	1
97	1/2" DIA. STEEL PIPE	1
98	1/2" DIA. STEEL PIPE	1
99	1/2" DIA. STEEL PIPE	1
100	1/2" DIA. STEEL PIPE	1

**BILL OF MATERIALS FOR 132-26-03-P S/N:132-26-03**

1. REVISION BY: 100, P.M. VALVES & METAL VALVES  
 2. APPROVED AND AUTHORIZED TO PROCEED FROM DESIGN  
 3. METAL VALVE IS BURNED, ASSED CLASS CHANGES AS  
 ON DRAWING

ITEM NO.	DESCRIPTION	QTY.
1	CONDUIT	1
2	1/2" DIA. STEEL PIPE	1
3	1/2" DIA. STEEL PIPE	1
4	1/2" DIA. STEEL PIPE	1
5	1/2" DIA. STEEL PIPE	1
6	1/2" DIA. STEEL PIPE	1
7	1/2" DIA. STEEL PIPE	1
8	1/2" DIA. STEEL PIPE	1
9	1/2" DIA. STEEL PIPE	1
10	1/2" DIA. STEEL PIPE	1
11	1/2" DIA. STEEL PIPE	1
12	1/2" DIA. STEEL PIPE	1
13	1/2" DIA. STEEL PIPE	1
14	1/2" DIA. STEEL PIPE	1
15	1/2" DIA. STEEL PIPE	1
16	1/2" DIA. STEEL PIPE	1
17	1/2" DIA. STEEL PIPE	1
18	1/2" DIA. STEEL PIPE	1
19	1/2" DIA. STEEL PIPE	1
20	1/2" DIA. STEEL PIPE	1
21	1/2" DIA. STEEL PIPE	1
22	1/2" DIA. STEEL PIPE	1
23	1/2" DIA. STEEL PIPE	1
24	1/2" DIA. STEEL PIPE	1
25	1/2" DIA. STEEL PIPE	1
26	1/2" DIA. STEEL PIPE	1
27	1/2" DIA. STEEL PIPE	1
28	1/2" DIA. STEEL PIPE	1
29	1/2" DIA. STEEL PIPE	1
30	1/2" DIA. STEEL PIPE	1
31	1/2" DIA. STEEL PIPE	1
32	1/2" DIA. STEEL PIPE	1
33	1/2" DIA. STEEL PIPE	1
34	1/2" DIA. STEEL PIPE	1
35	1/2" DIA. STEEL PIPE	1
36	1/2" DIA. STEEL PIPE	1
37	1/2" DIA. STEEL PIPE	1
38	1/2" DIA. STEEL PIPE	1
39	1/2" DIA. STEEL PIPE	1
40	1/2" DIA. STEEL PIPE	1
41	1/2" DIA. STEEL PIPE	1
42	1/2" DIA. STEEL PIPE	1
43	1/2" DIA. STEEL PIPE	1
44	1/2" DIA. STEEL PIPE	1
45	1/2" DIA. STEEL PIPE	1
46	1/2" DIA. STEEL PIPE	1
47	1/2" DIA. STEEL PIPE	1
48	1/2" DIA. STEEL PIPE	1
49	1/2" DIA. STEEL PIPE	1
50	1/2" DIA. STEEL PIPE	1
51	1/2" DIA. STEEL PIPE	1
52	1/2" DIA. STEEL PIPE	1
53	1/2" DIA. STEEL PIPE	1
54	1/2" DIA. STEEL PIPE	1
55	1/2" DIA. STEEL PIPE	1
56	1/2" DIA. STEEL PIPE	1
57	1/2" DIA. STEEL PIPE	1
58	1/2" DIA. STEEL PIPE	1
59	1/2" DIA. STEEL PIPE	1
60	1/2" DIA. STEEL PIPE	1
61	1/2" DIA. STEEL PIPE	1
62	1/2" DIA. STEEL PIPE	1
63	1/2" DIA. STEEL PIPE	1
64	1/2" DIA. STEEL PIPE	1
65	1/2" DIA. STEEL PIPE	1
66	1/2" DIA. STEEL PIPE	1
67	1/2" DIA. STEEL PIPE	1
68	1/2" DIA. STEEL PIPE	1
69	1/2" DIA. STEEL PIPE	1
70	1/2" DIA. STEEL PIPE	1
71	1/2" DIA. STEEL PIPE	1
72	1/2" DIA. STEEL PIPE	1
73	1/2" DIA. STEEL PIPE	1
74	1/2" DIA. STEEL PIPE	1
75	1/2" DIA. STEEL PIPE	1
76	1/2" DIA. STEEL PIPE	1
77	1/2" DIA. STEEL PIPE	1
78	1/2" DIA. STEEL PIPE	1
79	1/2" DIA. STEEL PIPE	1
80	1/2" DIA. STEEL PIPE	1
81	1/2" DIA. STEEL PIPE	1
82	1/2" DIA. STEEL PIPE	1
83	1/2" DIA. STEEL PIPE	1
84	1/2" DIA. STEEL PIPE	1
85	1/2" DIA. STEEL PIPE	1
86	1/2" DIA. STEEL PIPE	1
87	1/2" DIA. STEEL PIPE	1
88	1/2" DIA. STEEL PIPE	1
89	1/2" DIA. STEEL PIPE	1
90	1/2" DIA. STEEL PIPE	1
91	1/2" DIA. STEEL PIPE	1
92	1/2" DIA. STEEL PIPE	1
93	1/2" DIA. STEEL PIPE	1
94	1/2" DIA. STEEL PIPE	1
95	1/2" DIA. STEEL PIPE	1
96	1/2" DIA. STEEL PIPE	1
97	1/2" DIA. STEEL PIPE	1
98	1/2" DIA. STEEL PIPE	1
99	1/2" DIA. STEEL PIPE	1
100	1/2" DIA. STEEL PIPE	1

**MAR-QUINN INDUSTRIES LTD.**  
 7155 Spruce Drive, Lethbridge, Alberta, Canada  
 Tel. (780) 988-7800 Fax. (780) 988-2854

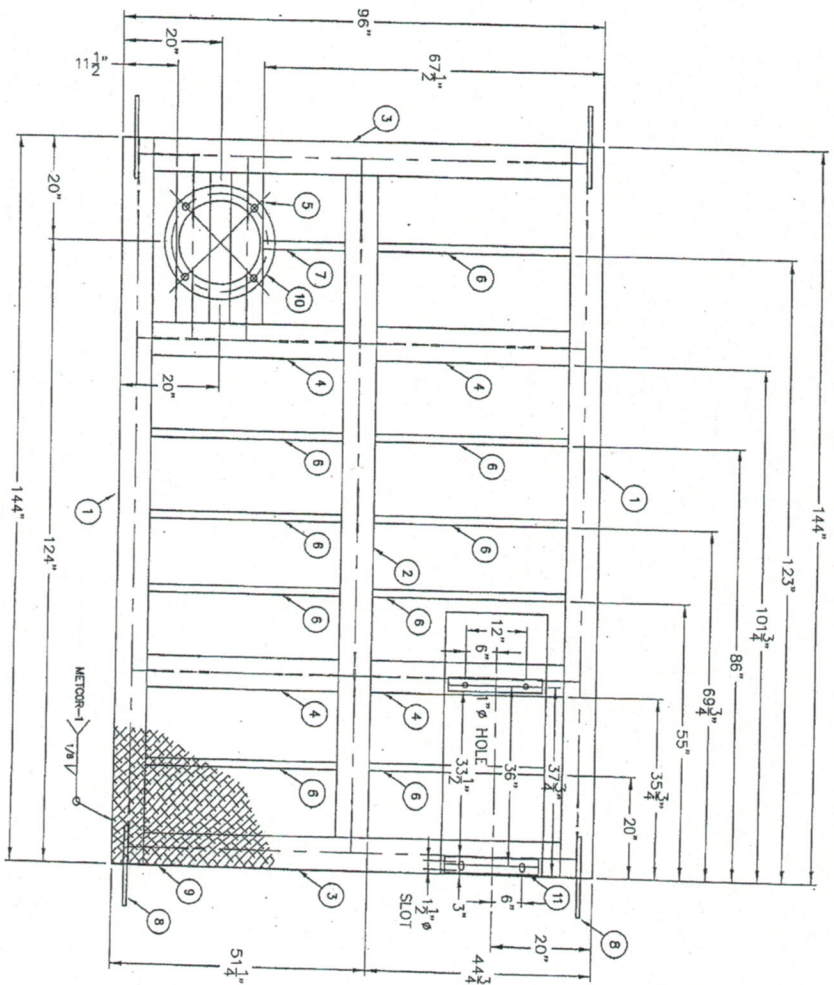
**PROCESS & INSTRUMENT DIAGRAM**  
 10" OD DEHYDRATION PACKAGE

DATE: MAY-15-2008  
 SHEET: 1 OF 1





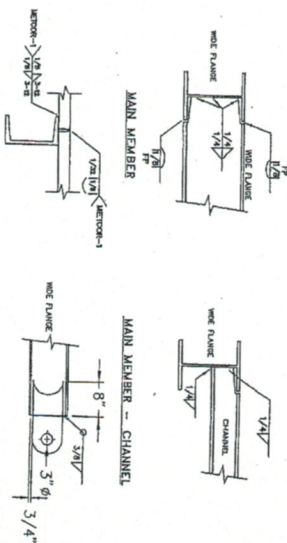




SKID STRUCTURAL DETAIL

- NOTES:
- 1) TOP OF CHECKER PLATE REF. ELEV. 0'
  - 2) CHECKER PLATE TO BE STITCH WELDED @ 3" - 12" AROUND UNDERSIDE SKID PERIMETER AND FULLY SEAL WELDED ON TOP.
  - 3) SKID SURFACE PREPARATION TO BE PER SSPC-SP6.
  - 4) SKID TO BE PAINTED AS FOLLOWS:  
ONE COAT OF PRIMER  
ONE COAT OF ENAMEL - WARMA GREY
  - 5) FULL PENETRATION WELDS ON MAIN MEMBERS.
  - 6) ALL ATTACHMENT WELD SHALL BE PER CWB WFS/METCOR-1 UNLESS OTHERWISE SPECIFIED. SP-1
  - 7) APPROXIMATE SKID WEIGHT = 3500 LBS.

ITEM QTY	PART	DESCRIPTION	MATERIAL
1	2	W.F. MAIN MEMBER 1	8" @ 24# / FT WIDE FLANGE x 144" LG ±
2	1	W.F. MAIN MEMBER 2	8" @ 24# / FT WIDE FLANGE x 137" LG ±
3	2	W.F. CROSS MEMBER 1	8" @ 24# / FT WIDE FLANGE x 89" LG ±
4	4	W.F. CROSS MEMBER 2	8" @ 24# / FT WIDE FLANGE x 44 1/4" LG ±
5	2	TOWER SUPPORT	8" @ 24# / FT WIDE FLANGE x 35 1/4" LG ±
6	9	CH CROSS MEMBER	C4 x 5.4# / FT x 44 1/4" LG ±
7	1	CH MEMBER	C4 x 5.4# / FT x 22 1/4" LG ±
8	4	LIFTING LUGS	3/4" x 8" x 16" PLATE
9	1	BUILDING FLOOR	12" x 8" 3/16" CHECKER PLATE
10	1	BASEPLATE - 16" OD VESSEL	1" PLATE - 22" OD x 13" H - See Vessel Dwg
11	1	BASEPLATE - REBOLLER	16" x 3 1/2" x 1/2" Pl - See Reboiler Dwg



TYPICAL WELD CONNECTIONS

REV	DESCRIPTION	BY	CHKD	DATE
0	ISSUED FOR CONSTRUCTION	HL	CD	05/24/05

**MAR-QUINN INDUSTRIES LTD.**  
7115 Sparrow Drive, Leduc, Alberta T9E 7L1  
PH. (780) 986-7905 FAX. (780) 986-2854

PROJECT NUMBER: I. CLAYTON  
DRAWING NO.: S/N 132-26-03  
SKID DRAWING: 96" X 144"  
16" OD DEHYDRATION PACKAGE

CLIENT: ENERFLEX  
DISTRIBUTION: CRT.  
SHOP: MAR-QUINN  
PROCUREMENT: MAR-QUINN  
PROV. / P. ENG: MAR-QUINN  
CLIENT: TOTAL  
TOTAL: 1







