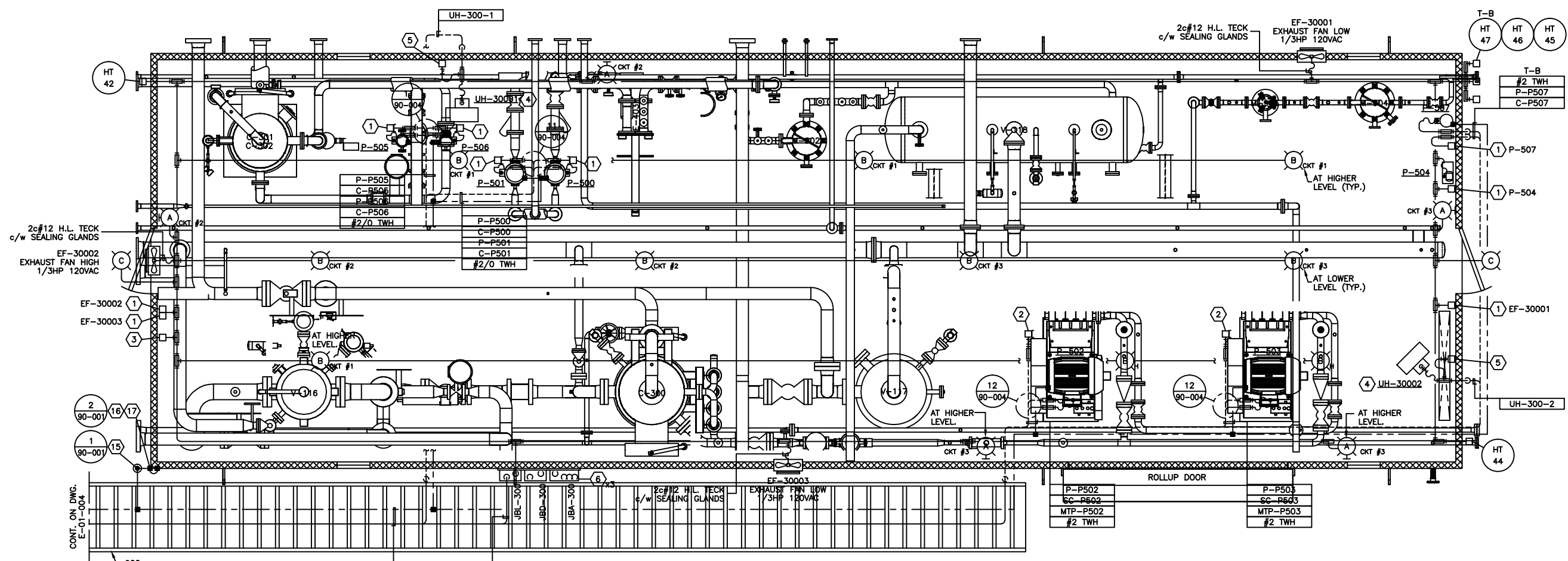


P-500 LEAN AMINE BOOSTER PUMP 7.5HP 480VAC 3Ø
 P-501 LEAN AMINE BOOSTER PUMP 7.5HP 480VAC 3Ø
 P-502 LEAN AMINE CHARGE PUMP 60HP 480VAC 3Ø
 P-503 LEAN AMINE CHARGE PUMP 60HP 480VAC 3Ø
 P-505 REFLUX PUMP 2HP 480VAC 3Ø
 P-506 REFLUX PUMP 2HP 480VAC 3Ø
 P-507 WATER/AMINE MAKE-UP PUMP 3HP 480VAC 3Ø
 UH-30001 UNIT HEATER 35kW 480VAC 3Ø
 UH-30002 UNIT HEATER 35kW 480VAC 3Ø
 P-504 CHEMICAL INJECTION PUMP 1/3HP 120VAC



CONT. ON DWG. E-01-004

LPF-300-1	P-P500	P-P505
ASF-300-1	C-P500	C-P505
ASF-300-2	P-P501	P-P506
ASF-300-3	C-P501	C-P506
TMF-300-1	P-P502	P-P507
TMF-300-2	SC-P502	C-P507
TMF-300-3	MTP-P502	UH-300-1
COM-300-1	P-P503	UH-300-2
COM-300-2	SC-P503	#2/O TWH
	MTP-P503	

C-300 AMINE BUILDING
 18288 x 5791
 EAVE HEIGHT - 4496

BILL OF MATERIALS
 (AS REQUIRED)

FIXTURES

- A. CROUSE HINDS #MVS2W150GP 120V, 150W HIGH PRESSURE SODIUM, WALL MOUNT FIXTURE c/w GLOBE, GUARD AND LAMP. CLASS I, ZONE 2.
- B. CROUSE HINDS #EVLPA143151 120V, 150W HIGH PRESSURE SODIUM, PENDANT MOUNT FIXTURE c/w GLOBE, GUARD AND LAMP. CLASS I, ZONE 1 & 2, EXPLOSION PROOF.
- C. APPLETON CHMYTOLASH c/w GUARD & LAMP 120/240VAC, 70W HIGH PRESSURE SODIUM WALL MOUNT CLASS I, ZONE 2.

MATERIALS

- 1. CROUSE HINDS #DSFS933 ON/OFF SWITCH, 277VAC, 20AMPS MAX. SINGLE POLE. CLASS I, DIV 1, EXPLOSION PROOF.
- 2. CROUSE HINDS CEAG #GHG4341115L9003 THREE POSITION CONTROL STATION c/w 2.2kohm SPEED POT, LOCAL/REMOTE SWITCH AND ON/OFF SWITCH. CLASS I, ZONE 1, EXPLOSION PROOF.
- 3. CROUSE HINDS #CPS152R DELAYED ACTION RECEPTACLE, 115-250VAC, 20AMPS, 1HP MAX. CLASS I, DIV 1, EXPLOSION PROOF.
- 4. RUFFNECK ELECTRIC UNIT HEATER, 480VAC, 3Ø, SIZED AS PER DRAWING, EXPLOSION PROOF. (OWNER SUPPLIED)
- 5. HEATING THERMISTAT, 120VAC CONTROL, CLASS I, DIV. 1, EXPLOSION PROOF.
- 6. CROUSE HINDS CEAG #GHG432KLM00SGT551211/2511 ESD PUSHBUTTON c/w RED SHROUD AND MIN. 4" x 6" ESD WARNING LAMICOID. CLASS I, ZONE 1, EXPLOSION PROOF.
- 7. NEMA 4 STEEL ENCLOSURE SIZED AS PER DRAWING c/w BACK PAN, TERMINAL BLOCKS AND MOUNTING HARDWARE.
- 8. HOFFMAN #A-NM6 JUNCTION BOX DRAIN SEAL.
- 9. NET SAFETY MOD. #MLP-A-SC1100-SEP MILLENNIUM COMBUSTIBLE GAS DETECTOR, 24VDC c/w 4-20mA SIGNAL OUTPUT, SEPARATOR KIT AND CCS-1 SPLASH GUARD.
- 10. NET SAFETY MOD. #MLP-A-ST1400-25 MILLENNIUM OXYGEN GAS DETECTOR, 24VDC c/w 4-20mA SIGNAL OUTPUT, SEPARATOR KIT AND CCS-1 SPLASH GUARD.
- 11. PLANT ALARM BEACON, 24VDC, RED, ROTATING, ZONE 2.

- 12. #2/0-#2/0 C-TAP SPLICE, INSTALLED c/w TAPE AND GLYPTOL SPRAY.
- 13. #2/0-#2 C-TAP SPLICE, INSTALLED c/w TAPE AND GLYPTOL SPRAY.
- 14. 300mm x 75mm COPPER CLUB GROUND RODS c/w - GROUND WELL; - INSPECTION COVER; - GROUND ROD CLAMP (#2/0).
- 15. GROUNDING SERVIT POST - #2/0 OR #2 AS REQUIRED.
- 16. BUILDING BONDING PLATE c/w #2 CRIMP-ON LUG.
- 17. 1/4" OR 1/2" BOLT c/w #2 CRIMP-ON LUG.
- 18. #2/0 CABLE TRAY BONDING CONNECTOR.

NOTES:

- 1. ALL WIRING TO THE SKID DEVICES SHALL BE TAKEN FROM THE RIGHTHAND SIDE OF THE TERMINALS, DIRECT WITHOUT SPLICES OF ANY KIND.
- 2. WIRING FOR ALL DEVICES SHALL BE TAGGED AS PER J.BOX LAYOUTS.
- 3. FIELD CONTRACTOR TO ENSURE ALL INCOMING/EXITING TECK CABLES ARE c/w GROUNDING BUSHINGS.
- 4. ALL J.BOXES ARE TO HAVE LAMICOID NAME PLATES AS PER DRAWINGS.
- 5. FIELD CONTRACTOR WILL BE RESPONSIBLE FOR GROUNDING AS WELL AS THE PACKING AND POURING OF ALL SEALS. THIS APPLIES WHETHER OR NOT THE SKID ARRIVES PRE-WIRED.
- 6. CONDUIT METHOD WILL BE RA c/w ALL FITTINGS.
- 7. ALL CABLES TO ENTER/EXIT THE BOTTOM OF THE J.BOXES. ALL CONDUIT TO ENTER/EXIT THE TOP OF THE J.BOXES VIA MYERS HUB.
- 8. THE INTERIOR OF THIS SKID IS CLASSIFIED CLASS-1 ZONE-2. THE EXTERIOR OF THIS SKID IS CLASSIFIED CLASS-1 ZONE 2 FOR THE FIRST 3 METERS.
- 9. INSTALLATION TO BE DONE ACCORDING TO GENERAL SPEC. INCLUDED WITH BID PACKAGE.
- 10. LEL DETECTORS TO BE INSTALLED USING OWNER SUPPLIED SEPARATION KITS. SEPARATION KITS TO BE MOUNTED ON WALL @ APPROXIMATELY 1500mm TO CENTER.
- 11. ALL VERTICAL CABLE TRAY RISERS ARE TO BE COMPLETE WITH PROPER SUPPORTS AND ALUMINUM TRAY COVER.
- 12. WINDOWS AND DOORS ARE NOT TO BE USED FOR VENTILATION.
- 13. LIGHTING LOCATION IS CONCEPTUAL ONLY.

NO.	REVISION	PROJECT	DSN	DRN	CHK'D	APP'D	DATE
5	POST CONSTRUCTION REVISIONS	64165	BGO	DC	BGO		07.05.14
4	POST CONSTRUCTION REVISIONS	43874	BGO	AO	BGO		05.12.09
3	ISSUED FOR CONSTRUCTION	43874	BGO	FC	BGO	RLB	05.09.02
2	ISSUED FOR BID	43874	BGO	FC	BGO		05.08.16
1	ISSUED FOR SKID CONSTRUCTION	43874	BGO	FC	BGO		05.08.08
0	ISSUED FOR APPROVAL	43874	BGO	FC	BGO		05.08.08

PERMIT STAMP:

GENERAL NOTES:

- "POST CONSTRUCTION DRAWINGS" ARE GENERATED FROM CONSTRUCTION CHANGES BY THE CONTRACTOR TO THE ORIGINAL DRAWINGS. THE CONTRACTOR SHALL BE RESPONSIBLE FOR THE ACCURACY OF THE INFORMATION AND DATA PROVIDED TO THE CONTRACTOR AND THE CONTRACTOR SHALL BE RESPONSIBLE FOR THE LOCATION OF ALL DEVICES AND EQUIPMENT.
- PRIOR TO THE COMMENCEMENT OF ANY CONSTRUCTION AND OR EXCAVATION IT SHALL BE THE RESPONSIBILITY OF THE CONTRACTOR TO VERIFY THE LOCATION OF ALL DEVICES AND EQUIPMENT.
- ANY REVISIONS MADE TO EXISTING EQUIPMENT, PIPING OR ELECTRICAL ON A SKID IS NOT COVERED BY THIS DRAWING. THE CONTRACTOR SHALL BE RESPONSIBLE FOR THE LOCATION OF ALL DEVICES AND EQUIPMENT.

	BY	DATE
DESIGN	BGO	05.07.18
DRAWN	FC	05.07.18
CHK'D	BGO	05.09.02
APP'D	RLB	05.09.02
L.S.D.	11-17-63-06 W5M	



FORT ENERGY CORP.		
CLEARWATER GAS PLANT C-300 AMINE BUILDING MOTOR/UTILITIES ELECTRICAL LAYOUT		
SCALE	DRAWING NUMBER	REV
1 : 30	D-43874-E-17-001	5