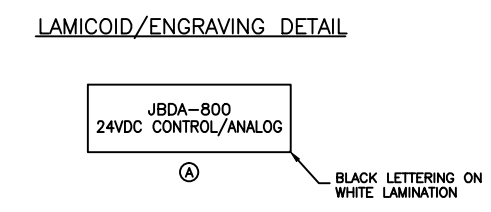
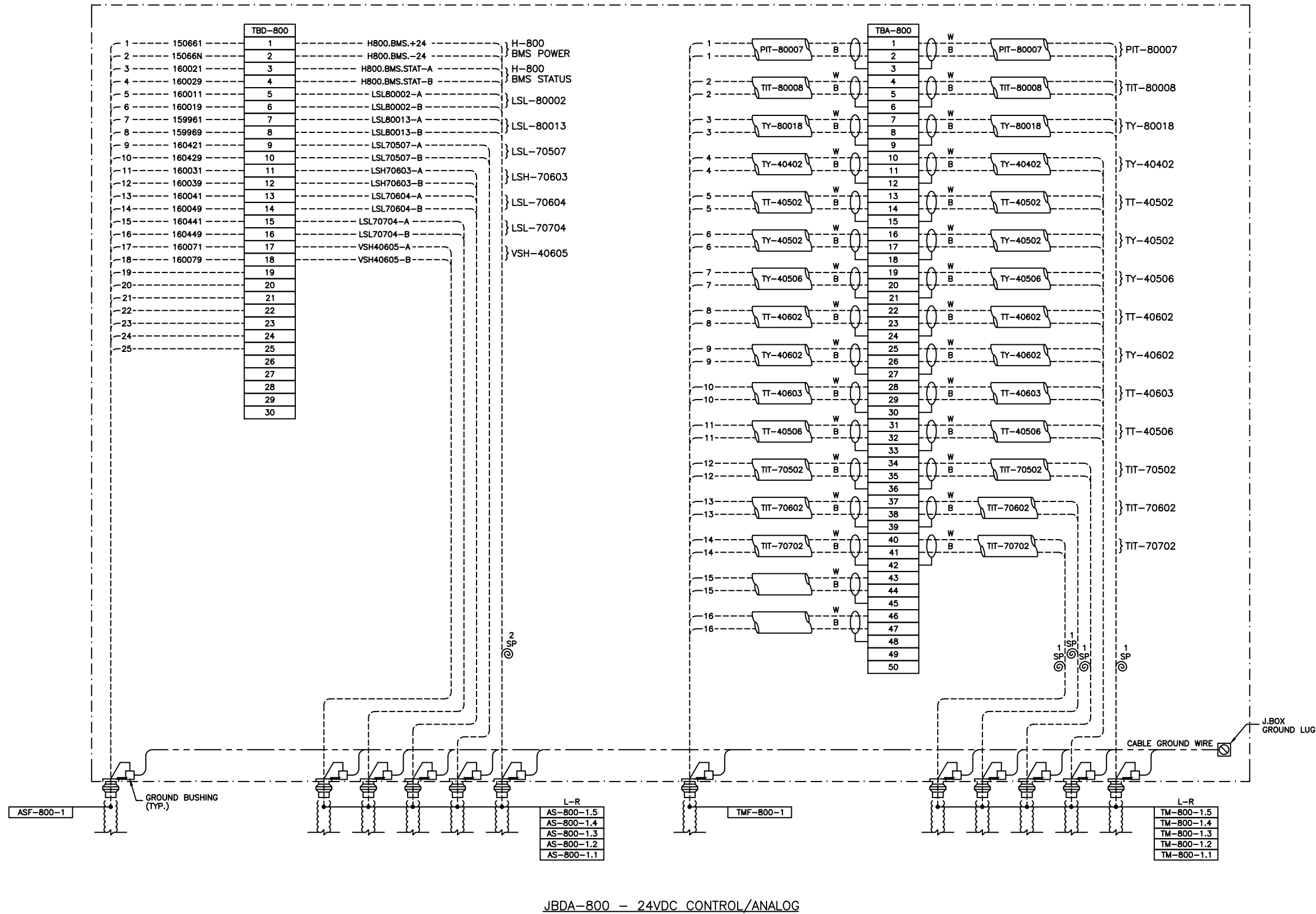


CUSTOM ENCLOSURE BILL OF MATERIALS

ITEM	QTY	DESCRIPTION
1	1	CUSTOM STEEL NEMA 4, WEATHERPROOF RATED ENCLOSURE: - 406mmH x 406mmW x 152mmD (EXTERIOR DIMENSIONS); - FULL HEIGHT DOOR c/w CSD TYPE CLOSURES; - HEAVY DUTY HINGE; - c/w (1) BACKPAN.
2	-	WEIDMULLER WDU-2.5 TERMINALS c/w ACCESSORIES.
3	80	WEIDMULLER WDU-4 TERMINALS c/w ACCESSORIES.
4	-	WEIDMULLER WDU-6 TERMINALS c/w ACCESSORIES.
5	2	WEIDMULLER WAP-2.5/4/6/10 END PLATE.
6	4	WEIDMULLER EW-35 END BRACKET.
7	2	WEIDMULLER SCHAT-5 GROUP TAG HOLDER.
8	AS REQ'D	DEKAFIX MARKING TAG (#1-#30, #1-#50).
9	AS REQ'D	WEIDMULLER TS35 MOUNTING RAIL.
10	1	HOFFMAN #A-NMVG DRAIN SEAL.
11	1	25mm x 75mm LAMICOID.



NO.	REVISION	PROJECT	DSN	DRN	CHK'D	APP'D	DATE
5	POST CONSTRUCTION REVISIONS	64165	BGO	DC	BGO		07.05.14
4	POST CONSTRUCTION REVISIONS	43874	BGO	AO	BGO		05.12.09
3	ISSUED FOR CONSTRUCTION	43874	BGO	FC	BGO	RLB	05.09.02
2	ISSUED FOR BID	43874	BGO	FC	BGO		05.08.16
1	ISSUED FOR SKID CONSTRUCTION	43874	BGO	FC	BGO		05.08.08
0	ISSUED FOR APPROVAL	43874	BGO	FC	BGO		05.08.08

PERMIT STAMP:

GENERAL NOTES:

- "POST CONSTRUCTION REVISIONS" ARE GENERATED FROM CONSTRUCTION CHANGE ORDERS APPROVED BY BOWER DAMBERGER ROLSETH ENGINEERS OR L.L.B. BY THE OWNER. FIELD SUPERVISORS AND/OR CONTRACTORS ARE ADVISED NOT TO PROCEED WITH ANY WORK UNLESS THE LOCATION AND THE SCOPE OF ANY REVISION IS ACCURATELY REPRESENTED ON THE CONSTRUCTION DRAWINGS.
- PRIOR TO THE COMMENCEMENT OF ANY CONSTRUCTION AND/OR EQUIPMENT INSTALLATION, THE RESPONSIBILITY OF THE OWNER IS TO PROVIDE TO THE CONTRACTOR A COMPLETE AND ACCURATE REPRESENTATION OF THE CONSTRUCTION DRAWINGS.
- ANY REVISIONS MADE TO EXISTING EQUIPMENT, PIPING OR ELECTRICAL ON A FACILITY NOT DESIGNED BY BOWER DAMBERGER ROLSETH ENGINEERS IS A REPRESENTATION OF WHAT EXISTS AND MUST BE VERIFIED BY THE OWNER.

	BY	DATE
DESIGN	BGO	05.07.29
DRAWN	FC	05.07.29
CHK'D	BGO	05.09.02
APP'D	RLB	05.09.02
L.S.D.	11-17-63-06 W5M	



FORT ENERGY CORP.		
CLEARWATER GAS PLANT H-800 AMINE REBOILER AREA J.BOX JBDA-800 WIRING DETAIL		
SCALE	DRAWING NUMBER	REV
N/A	D-43874-E-17-152	5