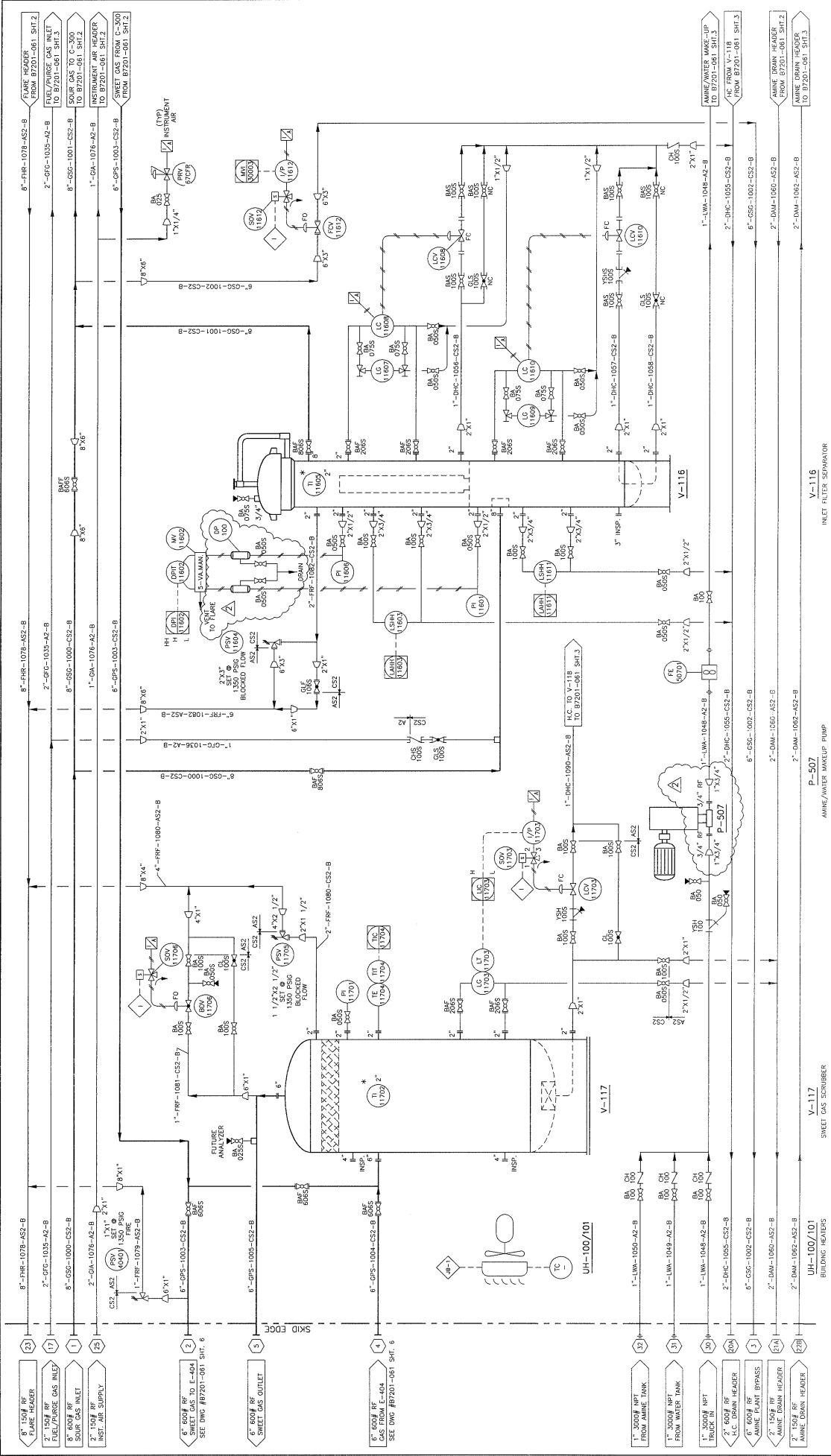


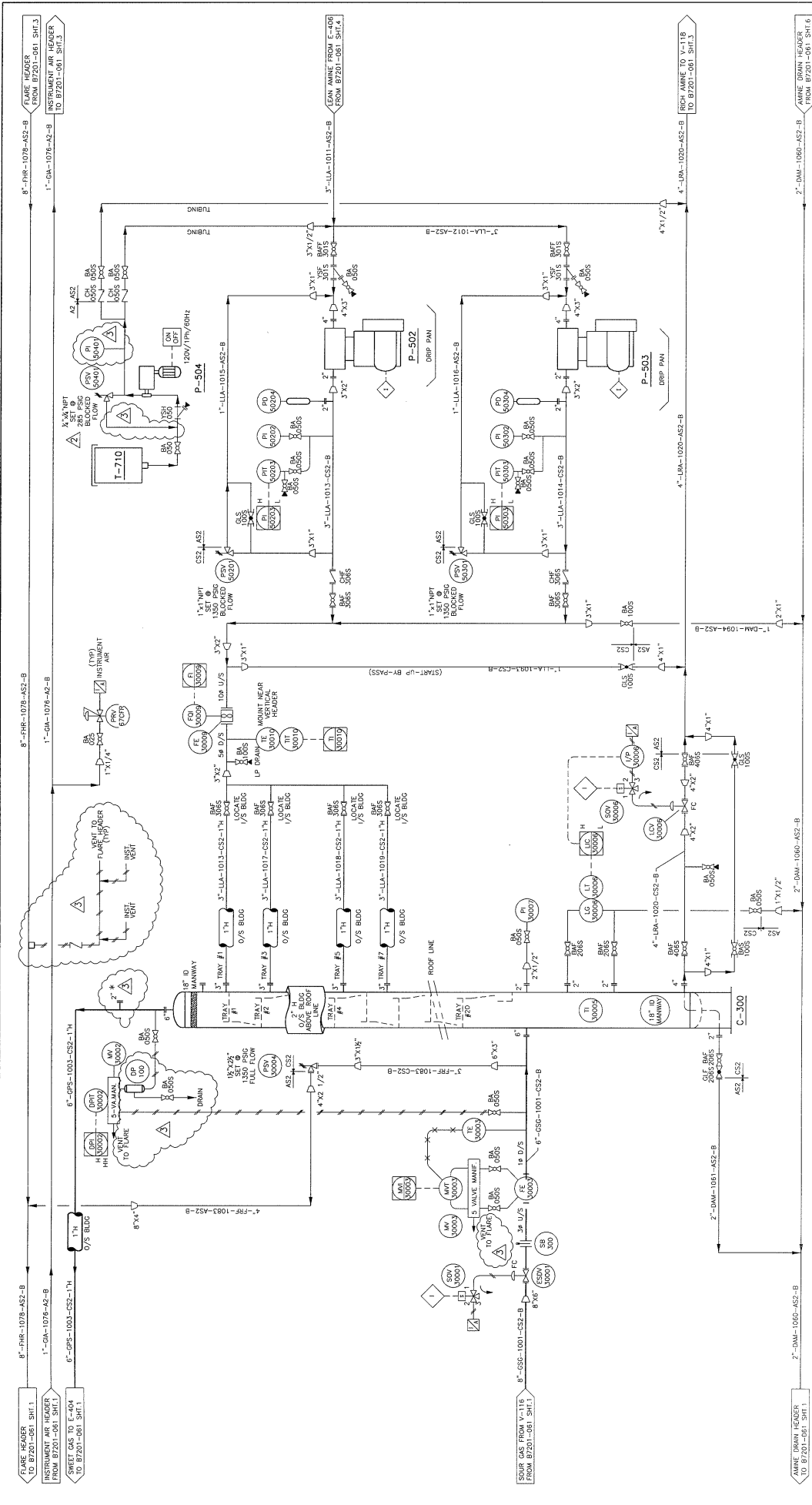
THIS DRAWING IS THE EXCLUSIVE PROPERTY OF PRESSON ENERGEX AND MAY NOT BE COPIED OR COMMUNICATED TO A THIRD PARTY WITHOUT THE WRITTEN AUTHORIZATION OF PRESSON ENERGEX



PROJECT		43874-3	
DRAWN		AB	
CHECKED		AB	
DATE		05/04/07	
SCALE		AS SHOWN	
SHEET		115	
OF		115	
PROJECT NAME		B7201-061 SHT. 1 OF 7	
<p>AMINE SWEETENING FACILITY PROCESS UNIT - P &amp; ID</p>			
<p><b>Presson</b> ENERGEX</p>			
<p>AMINE SWEETENING FACILITY LSD 11-17-63-06 WSM</p>			
<p>CLEARWATER GAS PLANT</p>			
<p>PORT ENERGY CORPORATION c/o BDR ENGINEERING</p>			

NOTES:  
 \* SHIPPED LOOSE FIELD INSTALLATION BY OTHERS

THIS DRAWING IS THE EXCLUSIVE PROPERTY OF PRESSON ENERLEX AND MAY NOT BE COPIED OR COMMUNICATED TO A THIRD PARTY WITHOUT THE WRITTEN AUTHORIZATION OF PRESSON ENERLEX



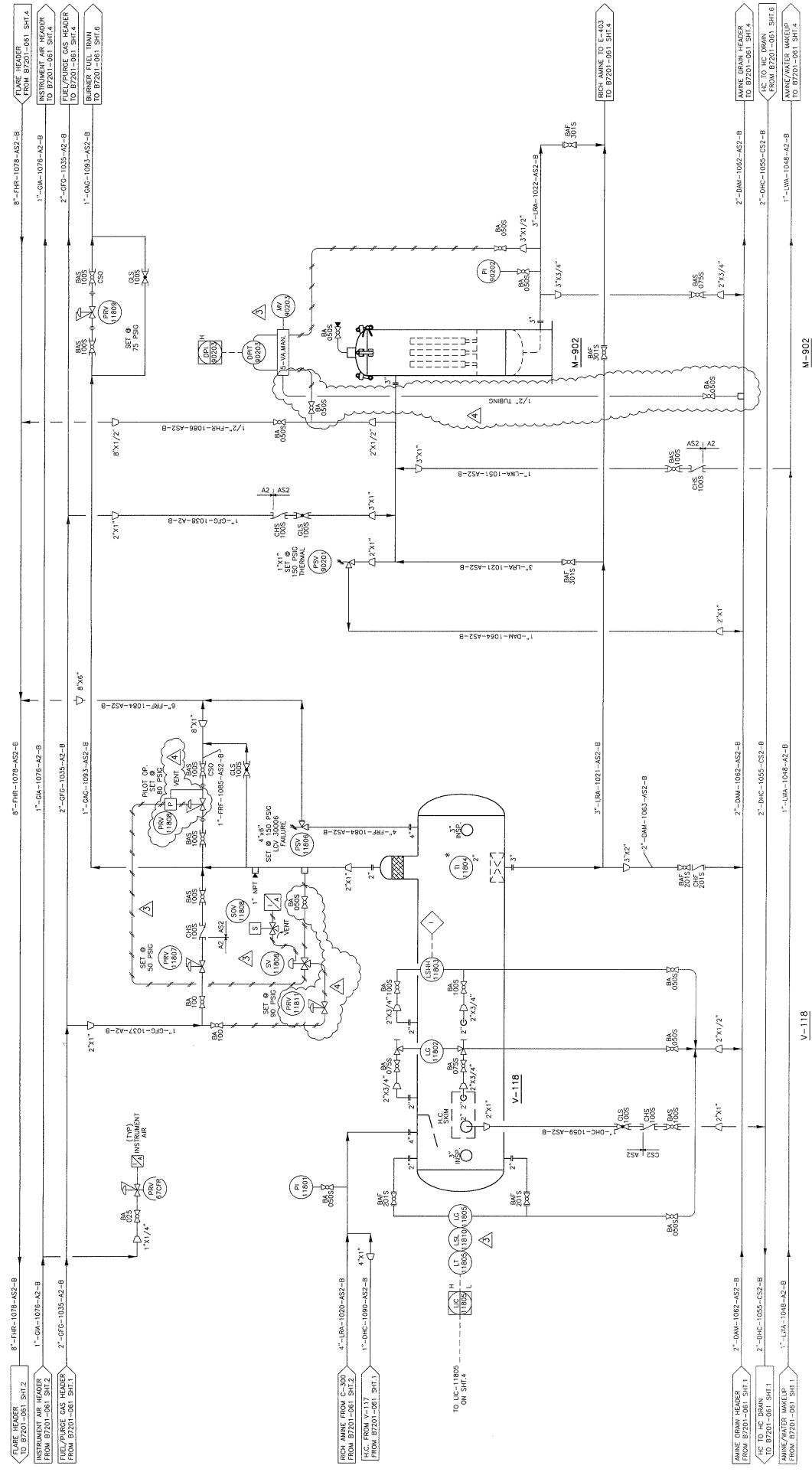
**C-300**  
 AMINE CONTRACTOR  
**P-504**  
 CHEMICAL INJECTION PUMP  
**T-710**  
 5 USGAL TANK  
 LEAN AMINE CHARGE PUMPS  
 FORT ENERGY CORPORATION c/o BDR ENGINEERING  
 43874-3  
 P-502/503  
 87201-061 SHT. 2 OF 7

NO.	REV.	DATE	BY	CHKD.	REVISION
3	AS-BUILT	05/09/20	SM		
2	PSV-504GT WAS SET @ 1350 PSIG	05/07/13	ZM		
1	RE-ISSUED FOR CONSTRUCTION	05/06/08	ZM		
B	ISSUED FOR CONSTRUCTION	05/05/10	ZM		
A	ISSUED FOR APPROVAL	05/04/11	AE		



NOTES:  
 \* CUSTOMER SUPPLIED/INSTALLED CORROSION COUPON

THIS DRAWING IS THE EXCLUSIVE PROPERTY OF PRESSON ENERGEX AND MAY NOT BE COPIED OR COMMUNICATED TO A THIRD PARTY WITHOUT THE WRITTEN AUTHORIZATION OF PRESSON ENERGEX.



RICH AMINE FLASH TANK

V-1118

RICH AMINE PARTICLE FILTER

M-902

NO.	REVISION	BY	CHKD	DATE
4	AS-BUILT	SM		05/09/24
3	REVISED AS SHOWN	KH		05/08/02
2	REVISED TO ADD LIS-11810	KH		05/09/02
1	RE-ISSUED FOR CONSTRUCTION	DM		05/09/08
0	ISSUED FOR CONSTRUCTION	ZB		05/04/07
B	RE-ISSUED FOR CONSTRUCTION	AS		05/04/07
A	ISSUED FOR APPROVAL	AS		05/04/07

**4.3874-3**

**Presson**

CORPORATION  
FORT ENERGY CORPORATION c/o BDR ENGINEERING  
CLEARWATER GAS PLANT  
LSD 11-17-63-06 WSM

RICH AMINE PARTICLE FILTER

M-902

RICH AMINE FLASH TANK

V-1118

RICH AMINE FLASH TANK

M-902

RICH AMINE PARTICLE FILTER

CLEARWATER GAS PLANT  
LSD 11-17-63-06 WSM

RICH AMINE SWEETENING FACILITY  
PROCESS UNIT - P & ID

DRAWN BY: [Signature] SCALE: 615

CHECKED BY: [Signature] DATE: 05/04/07

PROJECT NO: B7201-061 SHIF 3 OF 7

PROJECT TITLE: AMINE SWEETENING FACILITY PROCESS UNIT - P & ID

PROJECT LOCATION: CLEARWATER GAS PLANT

PROJECT NUMBER: 4.3874-3

PROJECT DESCRIPTION: RICH AMINE PARTICLE FILTER

PROJECT STATUS: AS-BUILT

PROJECT DATE: 05/09/24

PROJECT DRAWN BY: SM

PROJECT CHECKED BY: KH

PROJECT DATE: 05/08/02

PROJECT REVISED BY: DM

PROJECT DATE: 05/09/08

PROJECT REVISED BY: ZB

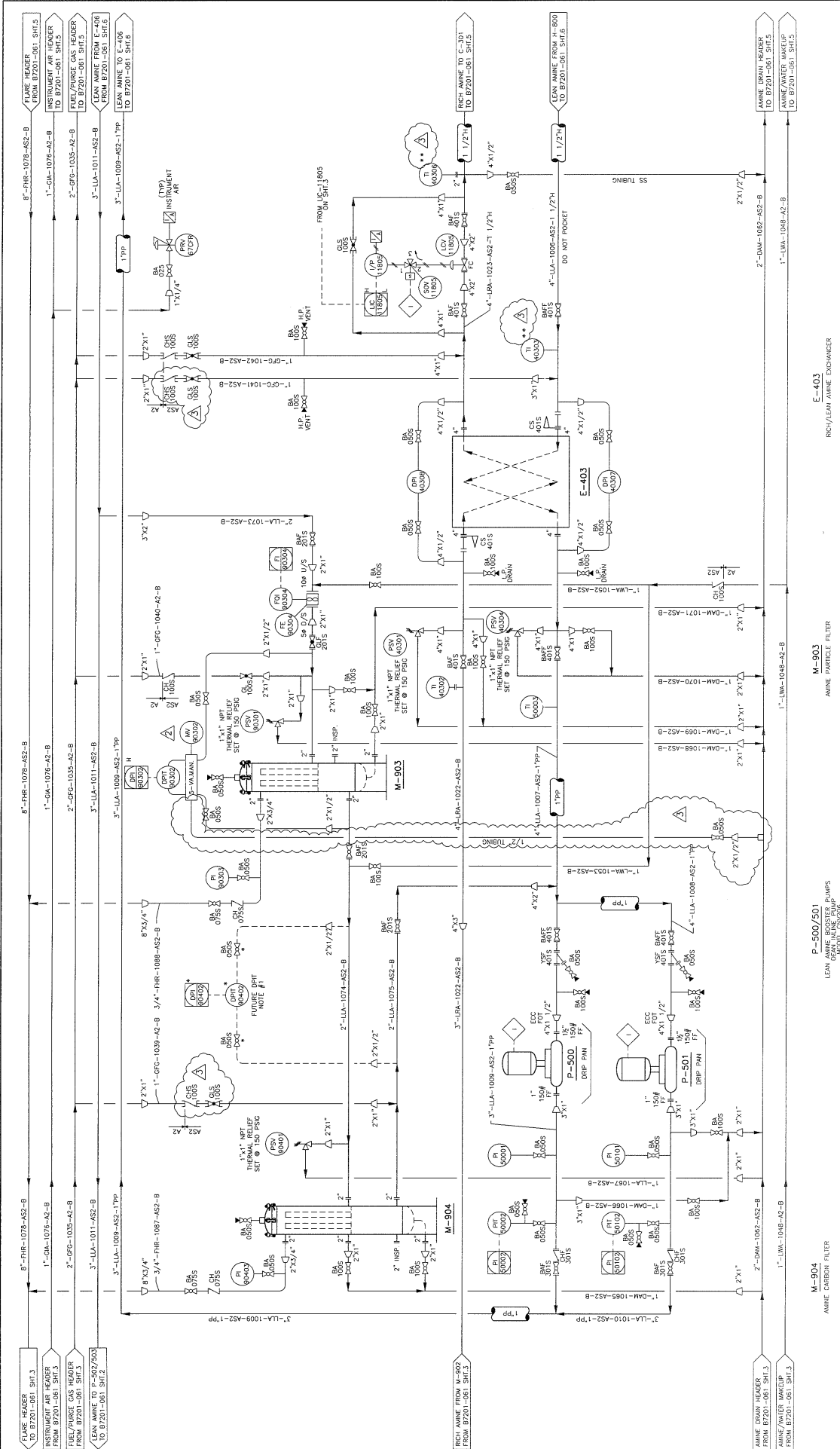
PROJECT DATE: 05/04/07

PROJECT REVISED BY: AS

PROJECT DATE: 05/04/07

NOTES:  
\* SHIPPED LOOSE FIELD INSTALLATION BY OTHERS

THIS DRAWING IS THE EXCLUSIVE PROPERTY OF PRESSON ENERGEX AND MAY NOT BE COPIED OR COMMUNICATED TO A THIRD PARTY WITHOUT THE WRITTEN AUTHORIZATION OF PRESSON ENERGEX



**Notes:**

- \* QUANTITIES TO BE SUPPLIED AND INSTALLED
- \*\* SHIPPED (CHECK FIELD INSTRUCTIONS FOR ORDERS)

**Equipment Schedule:**

NO.	DESCRIPTION	REV.	DATE
1	AS-BUILT	SM	05/09/76
2	ADDED M-902/02	CM	05/07/75
3	RE-ISSUED FOR CONSTRUCTION	CM	05/06/08
4	RE-ISSUED FOR APPROVAL	AS	05/04/77
5	RE-ISSUED FOR APPROVAL	AS	05/04/77

**Project Information:**

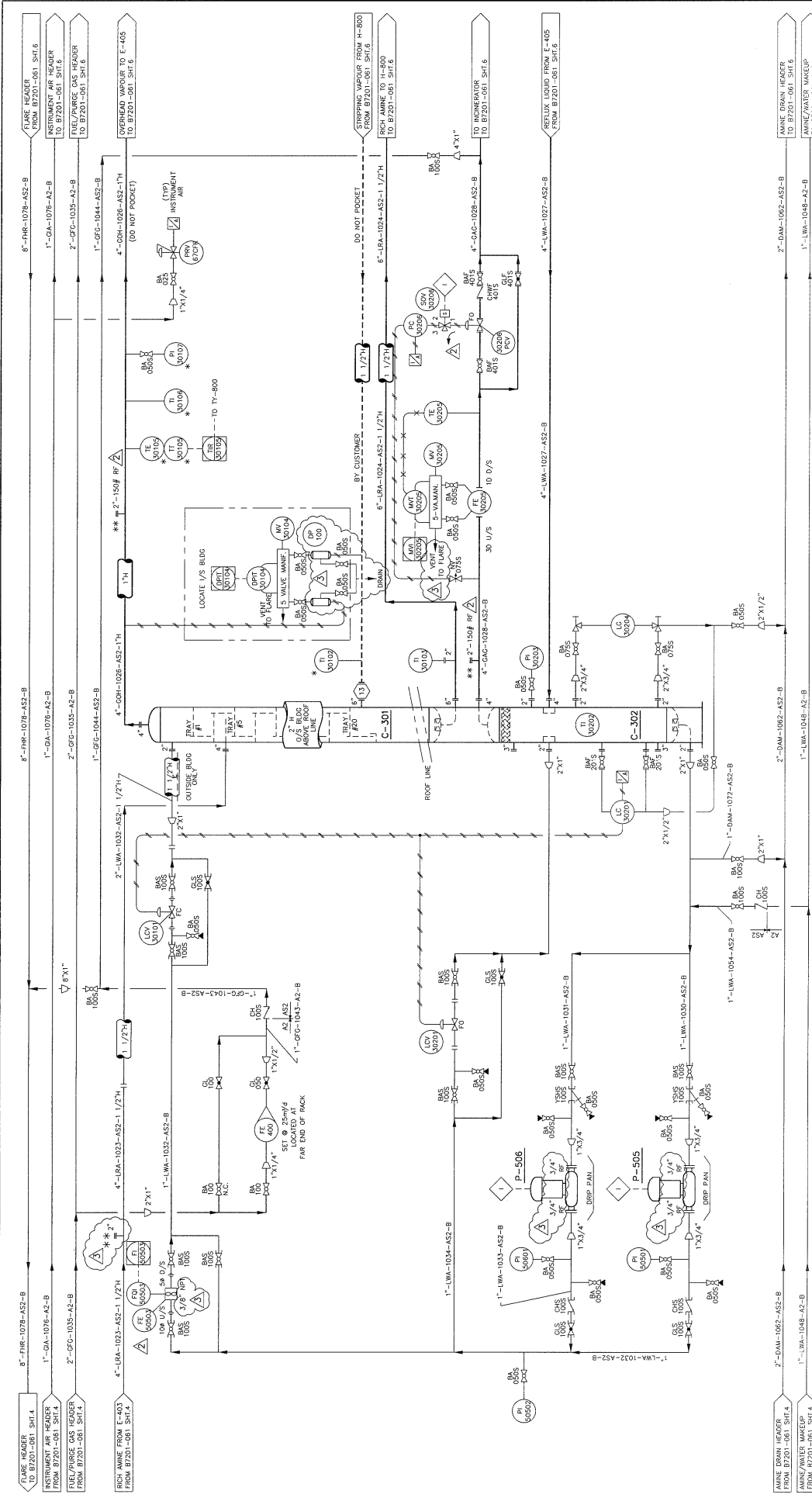
PROJECT: CLEARWATER GAS PLANT  
 FILE: LSD 11-17-63-06 WSM  
 PROCESS UNIT - P & ID  
 SHEET: 4 OF 7

**Company Information:**

FORN ENERGY CORPORATION c/o BDR ENGINEERING  
 RICH/LEAN AMINE EXCHANGER  
 MODEL: 43874-3

**Presson ENERGEX**

THIS DRAWING IS THE EXCLUSIVE PROPERTY OF PRESSON ENERGEX AND MAY NOT BE COPIED OR COMMUNICATED TO A THIRD PARTY WITHOUT THE WRITTEN AUTHORIZATION OF PRESSON ENERGEX.



**C-301**  
AMINE REGENERATOR

**C-302**  
REFLUX ACCUMULATOR

43874-3

**Presson**  
ENERGEX

NO	REVISION	BY	DATE
1	ISSUED FOR CONSTRUCTION	AS	05/04/11
2	ISSUED FOR CONSTRUCTION	ZM	05/05/11
3	ISSUED FOR CONSTRUCTION	CM	05/06/08
4	ISSUED FOR CONSTRUCTION	ZM	05/07/13
5	AS-BUILT	SM	05/09/16

**NOTES:**

- \* SHIPPED LOOSE FOR FIELD INSTALLATION BY OTHERS
- \*\* FOR CUSTOMER SUPPLIED/INSTALLED CORROSION COUPONS

**CUSTOMER PROJECT:** 43874-3

**CUSTOMER:** FORT ENERGY CORPORATION c/o BDR ENGINEERING

**PROJECT:** CLEARWATER GAS PLANT

**UNIT:** LSD 11-17-63-06 WSA

**PROCESS:** AMINE SWEETENING FACILITY

**PROCESS UNIT:** P & ID

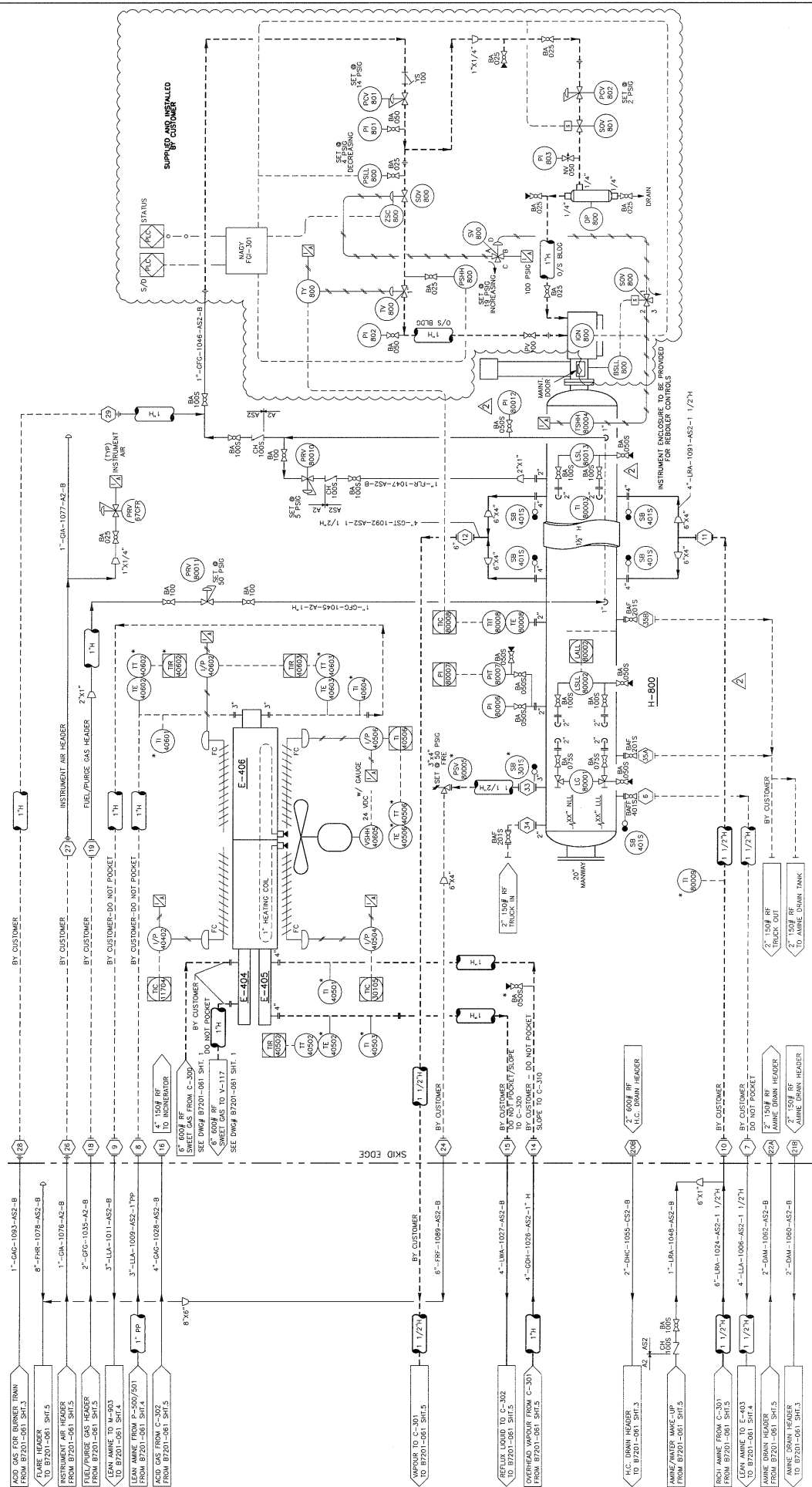
**DATE:** 15/04/07

**SCALE:** N/A

**SHEET NO:** 5

**TOTAL SHEETS:** 9

THIS DRAWING IS THE EXCLUSIVE PROPERTY OF PRESSON ENERFLEX AND MAY NOT BE COPIED OR COMMUNICATED TO A THIRD PARTY WITHOUT THE WRITTEN AUTHORIZATION OF PRESSON ENERFLEX



**Customer:** PORT ENERGY CORPORATION c/o BDR ENGINEERING

**Project:** CLEARWATER GAS PLANT

**Title:** LSD 11-17-63-06 WSM

**Process:** AMINE SWEETENING FACILITY PROCESS UNIT - P & ID

**Drawn:** [Signature]

**Scale:** ASIS

**Date:** 05/04/07

**Sheet:** B7201-061 SHI. 6 OF 7

43874-3

**Customer Number:** H-800 AMINE REBOILER

**Customer Number:** E-404 SWEET GAS COOLER

**Customer Number:** E-406 LEAN AMINE COOLER

**Customer Number:** H-801 AMINE REBOILER

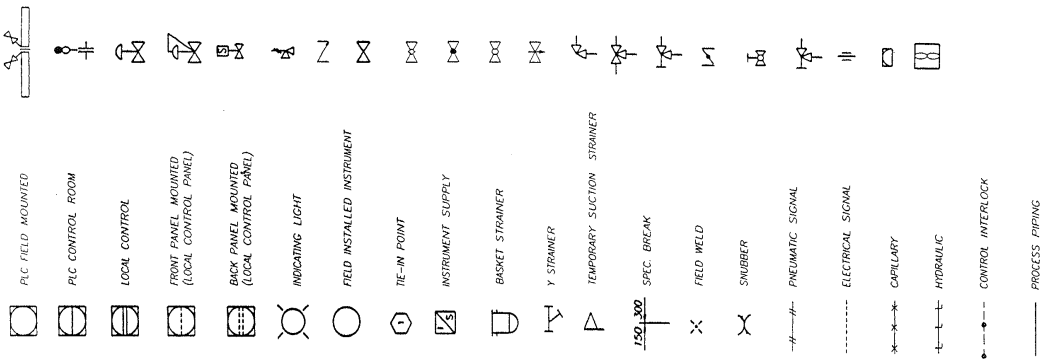
# Presson

ENERFLEX

NO.	DESCRIPTION	DATE	BY	CHKD.
3	AS-BUILT	05/09/06	SM	
2	REVISED TO ADD LS-, B0013 & P-80012	2M 05/07/13	SM	
1	RE-DESIGNED FOR CONSTRUCTION	05/06/06	SM	
0	ISSUED FOR CONSTRUCTION	05/05/06	SM	
5	ISSUED FOR CONSTRUCTION	05/04/07	SM	
4	ISSUED FOR CONSTRUCTION	05/04/07	SM	

**NOTES:**  
 1) \* SHIPPED LOOSE FOR FIELD INSTALLATION BY OTHERS.

THIS DRAWING IS THE EXCLUSIVE PROPERTY OF PRESSON ENERFLEX AND MAY NOT BE COPIED OR COMMUNICATED TO A THIRD PARTY WITHOUT THE WRITTEN AUTHORIZATION OF PRESSON ENERFLEX.



ESDV	- EMERGENCY SHUTDOWN VALVE	LCH	- LEVEL CONTROL HIGH
SP	- SAMPLE PROBE	ILG	- INTERFACE LEVEL GAUGE
CSO	- CAR SEAL OPEN	ILC	- INTERFACE LEVEL CONTROLLER
CSC	- CAR SEAL CLOSED	ILSH	- INTERFACE LEVEL SWITCH HIGH
UV	- PNEUMATIC 3-WAY LATCHING VALVE	ILSL	- INTERFACE LEVEL SWITCH LOW
POS	- POSITIONER	LIQUIDS SERVICE	LINE ABBREVIATIONS
LSR	- LOW SELECT RELAY	BUTANE	LBU
CH	- CHECK VALVE	CHEMICAL	LCH
IC	- GATE VALVE	HEAT MEDIUM	LHM
ICL	- GLOBE VALVE	HYDROCARBON CONDENSATE	LHC
ICV	- BALL VALVE	L.P.G.	LPG
ICN	- NEEDLE VALVE	LEAN AMINE	LLA
ICM	- ANGLE VALVE	LEAN GLYCOL	LLG
ICW	- THREE WAY VALVE	METHANOL	LME
ICX	- GAGE COCK	M.C.L.	LNG
ICB	- BUTTERFLY VALVE	OIL	LOI
ICD	- INLINE CHOKE	PROCESSED WATER	LPW
ICE	- ANGLE CHOKE	PROPANE	LPR
ICF	- RESTRICTED ORIFICE	RAW WATER	LRA
ICG	- DIAPHRAGM	REFRIGERANT	LRF
ICH	- TURBINE METER	RICH AMINE	LRA
ICI	- CONTROL INTERLOCK	RICH GLYCOL	LRG
ICJ	- PROCESS PIPING	STABILIZED CONDENSATE	LSC
ICK		WATER	LWA

ESDV	- EMERGENCY SHUTDOWN VALVE	ESD	- EMERGENCY SHUTDOWN VALVE
SP	- SAMPLE PROBE	GBU	BUTANE
CSO	- CAR SEAL OPEN	GFG	FUEL GAS
CSC	- CAR SEAL CLOSED	GA	INSTRUMENT AIR
UV	- PNEUMATIC 3-WAY LATCHING VALVE	GFS	PROCESSED/SALES GAS
POS	- POSITIONER	GPR	PROPANE
LSR	- LOW SELECT RELAY	GPG	PURGE GAS
CH	- CHECK VALVE	GRG	RAW GAS
IC	- GATE VALVE	GSG	SOUR GAS
ICL	- GLOBE VALVE	GST	STEAM
ICV	- BALL VALVE	GUA	UTILITY AIR
ICN	- NEEDLE VALVE	GOH	OVERHEADS GAS
ICM	- ANGLE VALVE	DRAIN SERVICE	
ICW	- THREE WAY VALVE	AMINE	
ICX	- GAGE COCK	GLYCOL	
ICB	- BUTTERFLY VALVE	HYDROCARBON	
ICD	- INLINE CHOKE	OIL	
ICE	- ANGLE CHOKE	WATER	
ICF	- RESTRICTED ORIFICE	ELABE SERVICE	LINE ABBREVIATIONS
ICG	- DIAPHRAGM	ACID GAS RELIEF/FLARE	FAG
ICH	- TURBINE METER	HP RELIEF/FLARE	FHR
ICI	- CONTROL INTERLOCK	LP RELIEF/FLARE	FLR
ICJ	- PROCESS PIPING	RELIEF/FLARE	FRF
ICK			

EQUIPMENT IDENTIFICATION			
B	- AIR BLOWER OR FAN	GAS SERVICE	
C	- VESSEL	ACID GAS	
E	- HEAT EXCHANGER	BUTANE	
F	- FILTER	FUEL GAS	
M	- FIRE HEATER OR BOILER	INSTRUMENT AIR	
H	- FILTER	PROCESSED/SALES GAS	
P	- PUMP	PROPANE	
T	- TOWER	PURGE GAS	
V	- VESSEL	RAW GAS	
U	- UNIT HEATER	SOUR GAS	
FS	- FLARE STACK	STEAM	
UH	- UNIT HEATER	UTILITY AIR	
FL	- FLARE STACK	OVERHEADS GAS	

VALVE TYPE	SIZE	ANSI BATING	ITEM
BA BALL	15	1 1/2"	1 - SWEET
CH CHECK	20	2"	2 - SOUR
CA GATE	30	3"	3 - LOW TEMP
CFW WAFER CHECK	40	4"	4 - SOUR & LOW TEMP
GF GATE	60	6"	5 - REFER TO 1/1
GL GLOBE	80	8"	
BL BUTTERFLY	100	10"	
YS STRAINER			
BSF BASKET STRAINER			

**Presson ENERFLEX**

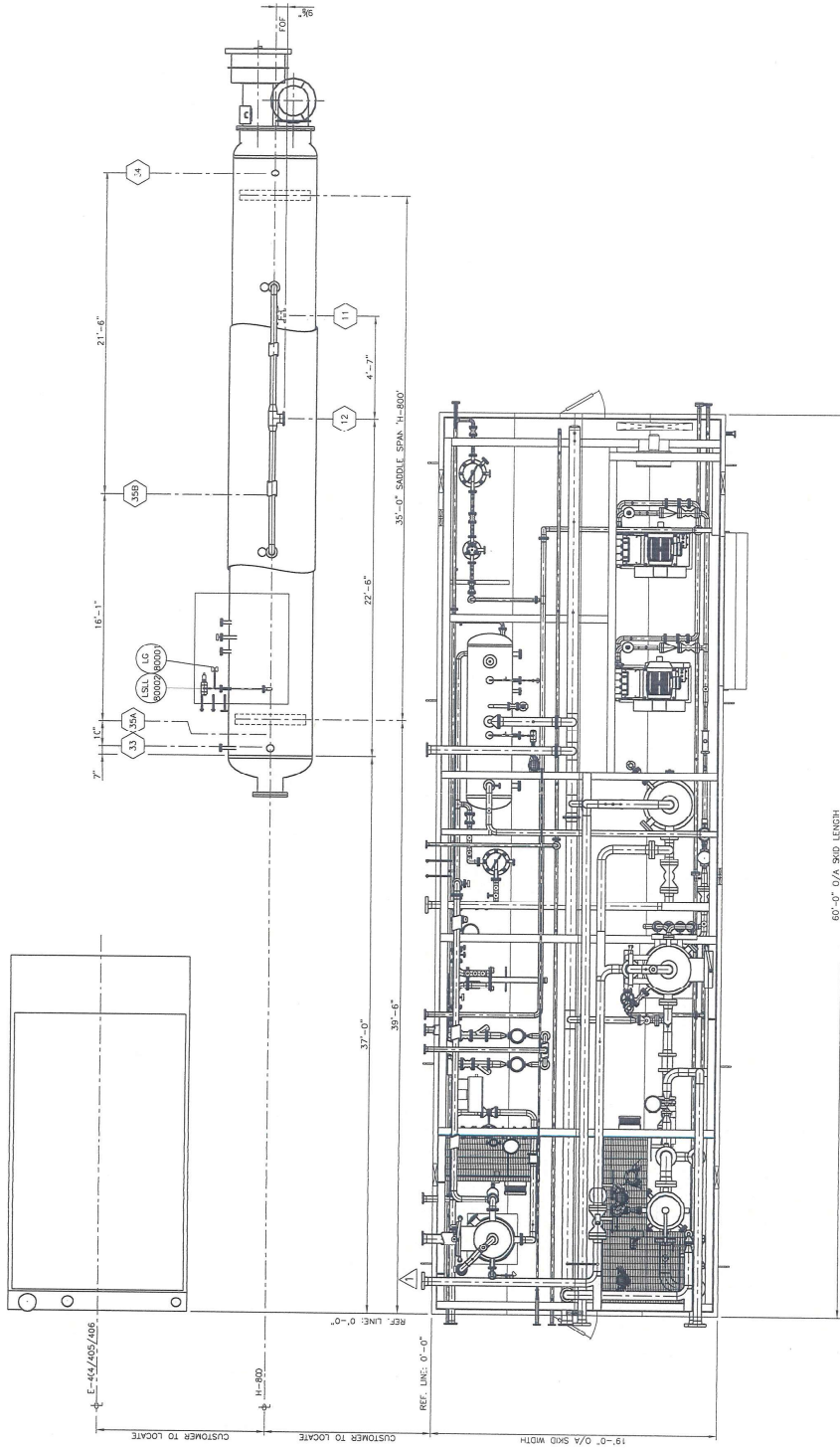
4.1874-J

CUSTOMER: FORT ENERGY CORPORATION c/o BDR ENGINEERING  
 PROJECT: CLEARWATER GAS PLANT  
 15D 11-17-63-06 WSM  
 SHEET: 7 OF 7

DATE: 05/04/07  
 DRAWN BY: [Signature]  
 CHECKED BY: [Signature]

ISSUED FOR CONSTRUCTION: [Signature]  
 ISSUED FOR APPROVAL: [Signature]

THIS DRAWING IS THE EXCLUSIVE PROPERTY OF PRESSON ENERFLEX AND MAY NOT BE COPIED OR COMMUNICATED TO A THIRD PARTY WITHOUT THE WRITTEN AUTHORIZATION OF PRESSON ENERFLEX.



NOTES:  
 1) ALL DIMENSIONS ARE TAKEN FROM TOP OF CHECKER. B. SEE 636-00-01  
 2) FOR SPRING SURFACE PREP AND PAINT NOTES SEE INSTRUMENT LIST  
 3) S-OP SUPPORT ALL PIPING AS REQUIRED  
 4) P.L. PIPING UNDER 2" W/S. SHOWN FOR REFERENCE ONLY

**AS-BUILT**

OWNER	ENERGY CORPORATION c/o BDN ENGINEERING	JOB NO.	B7201-06
PROJECT	CLEARWATER GAS PLANT		
FILE	LSD 11-17-63-06 WSM		
	AMINE SWEETENING FACILITY		
	PLOT PLAN		
DATE	05/06/78	SCALE	1/4"=1'-0"
BY	[Signature]	CHKD	[Signature]
APP'D	[Signature]	DATE	05/06/78

4.3874-3

# Presson

ENERFLEX

NO.	DESCRIPTION	REVISION	BY	DATE
1	8" 600# RF			
2	SOUR GAS INLET			
3	EL 8'-36" ±			
4	SWEET GAS TO E-404			
5	EL 13'-3" ±			
6	AMINE PANT BYPASS			
7	EL 6'-0" ±			
8	EL 15'-0" ±			
9	EL 15'-0" ±			
10	EL 15'-0" ±			
11	EL 15'-0" ±			
12	EL 15'-0" ±			
13	EL 15'-0" ±			
14	EL 15'-0" ±			
15	EL 15'-0" ±			
16	EL 15'-0" ±			
17	EL 15'-0" ±			
18	EL 15'-0" ±			
19	EL 15'-0" ±			
20	EL 15'-0" ±			
21	EL 15'-0" ±			
22	EL 15'-0" ±			
23	EL 15'-0" ±			
24	EL 15'-0" ±			
25	EL 15'-0" ±			
26	EL 15'-0" ±			
27	EL 15'-0" ±			
28	EL 15'-0" ±			
29	EL 15'-0" ±			
30	EL 15'-0" ±			
31	EL 15'-0" ±			
32	EL 15'-0" ±			
33	EL 15'-0" ±			
34	EL 15'-0" ±			
35	EL 15'-0" ±			
36	EL 15'-0" ±			

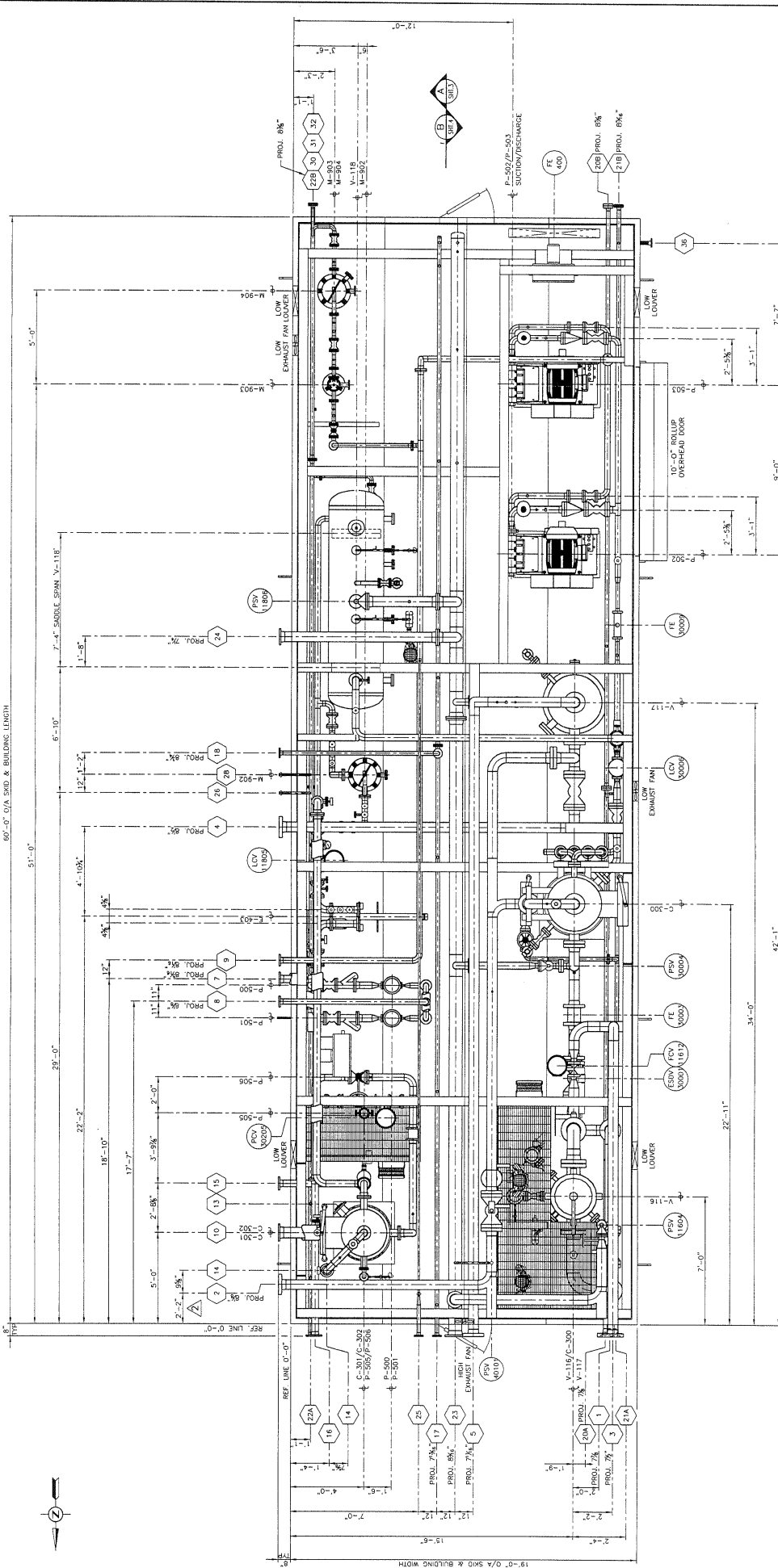
**IN-PIPE SCHEDULE**

17	2" 150# RF	TO H-800
18	2" 150# RF	TO H-800
19	2" 150# RF	TO H-800
20	2" 150# RF	TO H-800
21	2" 150# RF	TO H-800
22	2" 150# RF	TO H-800
23	2" 150# RF	TO H-800
24	2" 150# RF	TO H-800
25	2" 150# RF	TO H-800
26	2" 150# RF	TO H-800
27	2" 150# RF	TO H-800
28	2" 150# RF	TO H-800
29	2" 150# RF	TO H-800
30	2" 150# RF	TO H-800
31	2" 150# RF	TO H-800
32	2" 150# RF	TO H-800
33	2" 150# RF	TO H-800
34	2" 150# RF	TO H-800
35	2" 150# RF	TO H-800
36	2" 150# RF	TO H-800



THIS DRAWING IS THE EXCLUSIVE PROPERTY OF PRESSON ENERFLEX AND MAY NOT BE COPIED OR COMMUNICATED TO A THIRD PARTY WITHOUT THE WRITTEN AUTHORIZATION OF PRESSON ENERFLEX.

60'-0" O/A SKID & BUILDING LENGTH



**TIE-IN SCHEDULE**

1	SOUR GAS INLET	EL. 9'-5 1/2"
2	SWEET GAS TO E-404	EL. 13'-0" RT
3	AMINE PLANT BYPASS	EL. 15'-0" RT
4	GAS FROM E-404	EL. 15'-0" RT
5	SWEET GAS OUTLET	EL. 15'-0" RT
6	LEAN AMINE TO L-403	EL. 15'-0" RT
7	LEAN AMINE FROM H-800	EL. 15'-0" RT
8	LEAN AMINE TO E-405	EL. 13'-5 1/2"
9	LEAN AMINE FROM E-405	EL. 9'-0" BOP
10	RICH AMINE TO H-800	EL. 10'-5 1/2" BOP
11	RICH AMINE FROM C-301	EL. 10'-5 1/2" BOP
12	WAPOR TO C-301	EL. 8'-0" RT
13	WAPOR FROM H-800	EL. 15'-0" RT
14	OVERHEAD WAPOR TO E-405	EL. 15'-0" RT
15	REFLUX LIQUID TO C-302	EL. 15'-0" RT
16	REFLUX LIQUID FROM H-800	EL. 15'-0" RT
17	FUEL/GAS INLET	EL. 9'-0" BOP
18	FUEL GAS TO H-800	EL. 10'-5 1/2" BOP
19	FUEL GAS FROM HEADER	EL. 10'-5 1/2" BOP
20	AC DRAIN HEADER	EL. 15'-0" RT
21	AMINE DRAIN HEADER	EL. 15'-0" RT
22	AMINE DRAIN HEADER	EL. 15'-0" RT
23	AMINE DRAIN HEADER	EL. 15'-0" RT
24	AMINE DRAIN HEADER	EL. 15'-0" RT
25	INSTRUMENT AIR HEADER	EL. 12'-0" BOP
26	INSTRUMENT AIR TO H-800	EL. 10'-5 1/2" BOP
27	INSTRUMENT AIR FROM HEADER	EL. 10'-5 1/2" BOP
28	ACID GAS TO H-800	EL. 15'-0" RT
29	ACID GAS FROM V-118	EL. 15'-0" RT
30	TRUCK IN	EL. 14'-5" FOP
31	FROM WATER TANK	EL. 14'-5" FOP
32	FROM AMINE TANK	EL. 14'-5" FOP
33	FROM TRUCK IN	EL. 14'-5" FOP
34	FROM TRUCK IN	EL. 14'-5" FOP
35	TO AMINE DRAIN TANK/TRUCK OUT	EL. 6'-11 1/2" TOP

**AS-BUILT**

36	1" 150# DR	CM	05/08/18
37	3" 150# DR	CM	05/07/05
38	REVISED SKID EDGE MARK	CM	05/06/17
39	MOVED TIE-IN #2 TO EAST SIDE	CM	05/06/14
40	ADDED PACKAGE WEIGHT	CM	05/06/10
41	ISSUED FOR CONSTRUCTION	CM	05/04/28
42	ISSUED FOR APPROVAL	CM	05/04/28

**NOTES:**

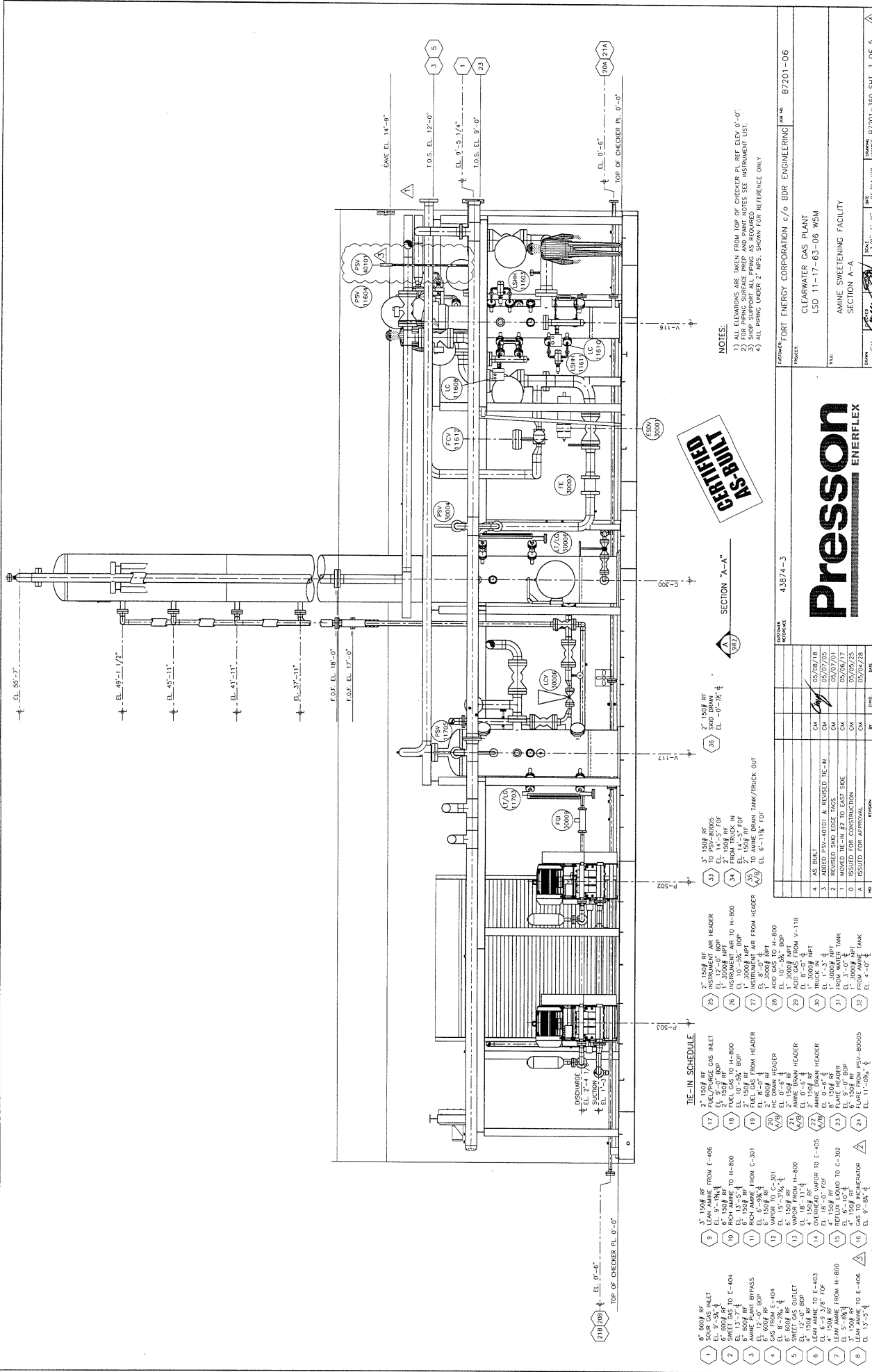
- 1) ALL ELEVATIONS ARE TAKEN FROM TOP OF CHECKER PL. REF. ELEV. 0'-0".
- 2) SHOP SUPPORT ALL PIPING AS REQUIRED.
- 3) SHOP SUPPORT ALL PIPING AS REQUIRED.
- 4) ALL PIPING UNDER 2" NPS. SHOWN FOR REFERENCE ONLY.
- 5) TOTAL APPROX. PACKAGE HEIGHT: 15,000 LBS (6,800 KG).

**CERTIFIED AS-BUILT**

CUSTOMER: FORT ENERGY CORPORATION c/o BIR ENGINEERING  
 PROJECT: CLEARWATER GAS PLANT  
 LSD 11-17-63-06 WSM  
 TITLE: AMINE SWEETENING FACILITY GENERAL ARRANGEMENT  
 DRAWN: [Signature]  
 CHECKED: [Signature]  
 DATE: 05/04/28  
 SHEET: 2 OF 5



THIS DRAWING IS THE EXCLUSIVE PROPERTY OF PRESSON ENERFLEX AND MAY NOT BE COPIED OR COMMUNICATED TO A THIRD PARTY WITHOUT THE WRITTEN AUTHORIZATION OF PRESSON ENERFLEX.



**AS BUILT**

**Presson ENERFLEX**

**TIE-IN SCHEDULE**

NO.	DESCRIPTION	DATE	BY	CHKD.
1	8" SDR30 RT. SWEET GAS INLET EL. 3'-3" ±			
2	SWEET GAS TO E-404 RT. 6024 RT. EL. 10'-0" ±			
3	AMINE PLANT BYPASS GAS FROM E-404 RT. 6024 RT. EL. 10'-0" ±			
4	SWEET GAS OUTLET EL. 10'-0" ±			
5	OVERHEAD VAPOR TO E-405 EL. 10'-0" ±			
6	OVERHEAD VAPOR TO E-403 EL. 10'-0" ±			
7	RECYCLE GAS TO E-406 EL. 10'-0" ±			
8	EL. 10'-0" ±			
9	LEAN AMINE FROM E-405 EL. 9'-0" ±			
10	RICH AMINE TO H-800 EL. 10'-0" ±			
11	RICH AMINE FROM C-301 EL. 10'-0" ±			
12	VAPOR TO C-301 EL. 10'-0" ±			
13	VAPOR FROM H-800 EL. 10'-0" ±			
14	OVERHEAD VAPOR TO E-405 EL. 10'-0" ±			
15	RECYCLE GAS TO E-406 EL. 10'-0" ±			
16	EL. 10'-0" ±			
17	FUEL/GAS INLET EL. 10'-0" ±			
18	FUEL GAS TO H-800 EL. 10'-0" ±			
19	FUEL GAS FROM HEADER EL. 10'-0" ±			
20	HC DRAIN HEADER EL. 10'-0" ±			
21	AMINE DRAIN HEADER EL. 10'-0" ±			
22	AMINE DRAIN HEADER EL. 10'-0" ±			
23	EL. 10'-0" ±			
24	EL. 10'-0" ±			
25	1" 150# RT. INSTRUMENT AIR HEADER EL. 12'-0" ±			
26	1" 150# RT. INSTRUMENT AIR TO H-800 EL. 10'-0" ±			
27	1" 150# RT. INSTRUMENT AIR FROM HEADER EL. 10'-0" ±			
28	1" 150# RT. ACID GAS TO H-800 EL. 10'-0" ±			
29	1" 150# RT. ACID GAS FROM V-118 EL. 10'-0" ±			
30	1" 150# RT. TRUCK IN EL. 10'-0" ±			
31	1" 150# RT. FROM WATER TANK EL. 10'-0" ±			
32	1" 150# RT. FROM WATER TANK EL. 10'-0" ±			
33	1" 150# RT. TO PSV HEADS EL. 14'-5" TOP FROM TRUCK IN EL. 14'-5" ±			
34	1" 150# RT. FROM TRUCK IN EL. 14'-5" ±			
35	1" 150# RT. TO AMINE DRAIN/TRUCK OUT EL. 8'-11 1/2" ±			

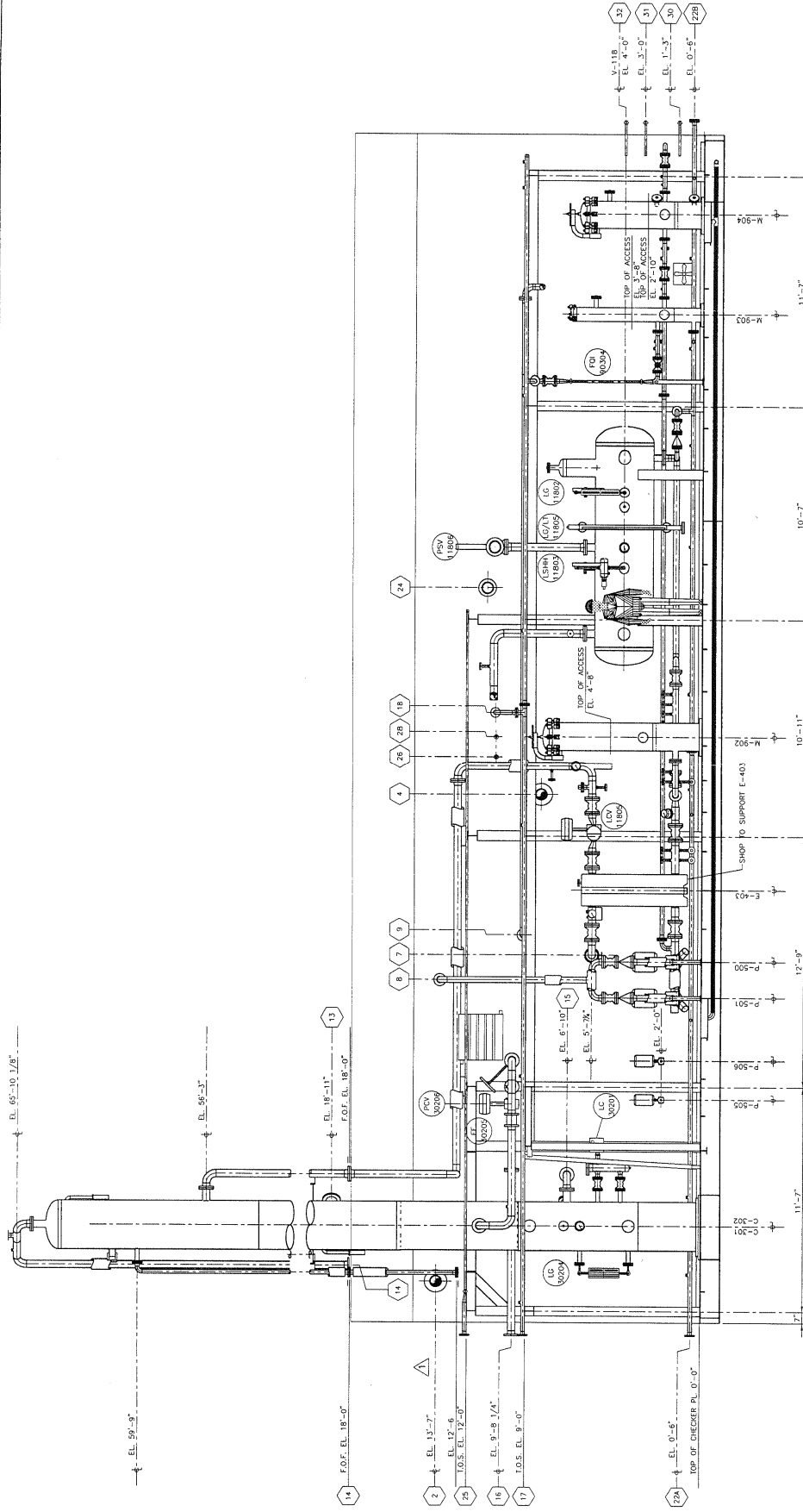
**NOTES:**

- 1) DIMENSIONS ARE GIVEN FROM TOP OF CHECKER PL. RT. EL. 0'-0"
- 2) FOR PIPING SURFACE PREP AND PAINT NOTES SEE INSTRUMENT LIST.
- 3) SHIP SUPPORT ALL PIPING AS REQUIRED
- 4) ALL PIPING UNDER 2" NPS. SHOWN FOR REFERENCE ONLY

OWNER	CONVERSE PORT ENERGY CORPORATION c/o BOR ENGINEERING
PROJECT	CLEARWATER GAS PLANT
NO.	LSD 11-17-83-06 WSM
SECTION	SECTION A-A
DATE	05/09/78
SCALE	3/8" = 1'-0"
DRAWN	CM
CHECKED	CM
DATE	05/09/78
PROJECT NO.	B7201-06

NO.	DESCRIPTION	DATE	BY	CHKD.
1	AS BUILT (EL. 410) & REVISED (EL. 410)	05/09/78	CM	
2	REVISED SKID EDGE TAGS	05/07/01	CM	
3	MOVED (EL. 410) TO EAST SIDE	05/06/17	CM	
4	ISSUED FOR CONSTRUCTION	05/05/25	CM	
5	ISSUED FOR APPROVAL	05/05/28	CM	

THIS DRAWING IS THE EXCLUSIVE PROPERTY OF PRESSON ENERFLEX AND MAY NOT BE COPIED OR COMMUNICATED TO A THIRD PARTY WITHOUT THE WRITTEN AUTHORIZATION OF PRESSON ENERFLEX.



**IN-PLANT SCHEDULE**

1	8" SOURCE GAS INLET EL. 5'-0"
2	8" SWEET GAS TO E-404 EL. 5'-0"
3	8" AMINE PLANT BYPASS EL. 5'-0"
4	8" GAS FROM E-404 EL. 5'-0"
5	8" SWEET GAS OUTLET EL. 5'-0"
6	8" GAS FROM H-800 EL. 5'-0"
7	8" SWEET GAS TO E-406 EL. 5'-0"
8	8" LEAN AMINE FROM E-405 EL. 5'-0"
9	8" RICH AMINE TO H-800 EL. 5'-0"
10	8" RICH AMINE TO H-800 EL. 5'-0"
11	8" RICH AMINE FROM C-301 EL. 5'-0"
12	8" VAPOR TO C-301 EL. 5'-0"
13	8" VAPOR FROM H-800 EL. 5'-0"
14	8" OVERHEAD VAPOR TO E-405 EL. 5'-0"
15	8" VAPOR FROM H-800 EL. 5'-0"
16	8" VAPOR FROM H-800 EL. 5'-0"
17	8" FUEL/GAS GAS INLET EL. 5'-0"
18	8" FUEL GAS TO H-800 EL. 5'-0"
19	8" FUEL GAS FROM HEADER EL. 5'-0"
20	8" FUEL GAS FROM HEADER EL. 5'-0"
21	8" FUEL GAS FROM HEADER EL. 5'-0"
22	8" FUEL GAS FROM HEADER EL. 5'-0"
23	8" FUEL GAS FROM HEADER EL. 5'-0"
24	8" FUEL GAS FROM HEADER EL. 5'-0"
25	8" INSTRUMENT AIR HEADER EL. 5'-0"
26	8" INSTRUMENT AIR TO H-800 EL. 5'-0"
27	8" INSTRUMENT AIR FROM HEADER EL. 5'-0"
28	8" ACID GAS TO H-800 EL. 5'-0"
29	8" ACID GAS FROM H-118 EL. 5'-0"
30	8" ACID GAS FROM H-800 EL. 5'-0"
31	8" ACID GAS FROM WATER TANK EL. 5'-0"
32	8" ACID GAS FROM HEADER EL. 5'-0"

**AS-BUILT**

33	AS-BUILT EDGE TACKS EL. 14'-5" TOP FROM TRUCK IN
34	REWORKED EDGE TACKS EL. 14'-5" TOP FROM TRUCK IN
35	MOVED FILE-N #2 TO EAST SIDE EL. 6'-11 1/2" FOR AMINE DRAIN TANK/TRUCK OUT
36	AS-BUILT EDGE TACKS EL. 0'-0" TO 7'-0"
37	REWORKED EDGE TACKS EL. 0'-0" TO 7'-0"
38	ISSUED FOR CONSTRUCTION EL. 0'-0" TO 7'-0"
39	ISSUED FOR APPROVAL EL. 0'-0" TO 7'-0"

**SECTION "B-B"**

NOTES:  
 1) ALL ELEVATIONS ARE TAKEN FROM TOP OF CHECKER PL. REF. ELEV. 0'-0".  
 2) SHOP SUPPORT ALL PIPING AS REQUIRED.  
 3) SHOP SUPPORT ALL PIPING AS REQUIRED.  
 4) ALL PIPING UNDER 2" NPS, SHOWN FOR REFERENCE ONLY.

**CERTIFIED AS-BUILT**

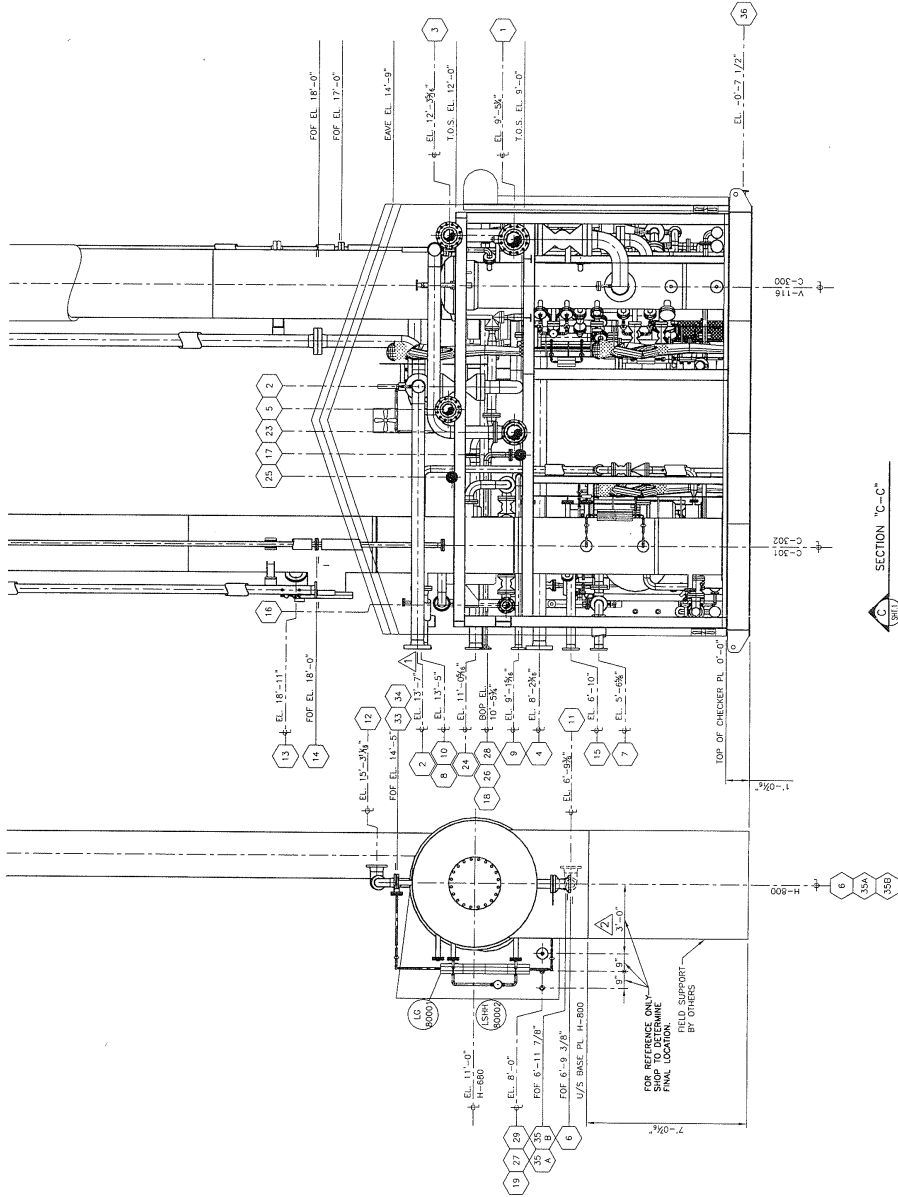
**Presson ENERFLEX**

CUSTOMER: FORT ENERGY CORPORATION c/o BDR ENGINEERING  
 PROJECT: CLEARWATER GAS PLANT  
 TITLE: LSD 11-17-63-06 WSM  
 SECTION: SECTION B-B

NO.	DESCRIPTION	DATE
1	ISSUED FOR CONSTRUCTION	05/05/75
2	ISSUED FOR APPROVAL	05/04/78
3	ISSUED FOR CONSTRUCTION	05/07/00
4	ISSUED FOR APPROVAL	05/07/00

DATE: 3/8-11-00  
 DRAWN: [Signature]  
 CHECKED: [Signature]  
 PER. NO.: B7201-06

THIS DRAWING IS THE EXCLUSIVE PROPERTY OF PRESSON ENERFLEX AND MAY NOT BE COPIED OR COMMUNICATED TO A THIRD PARTY WITHOUT THE WRITTEN AUTHORIZATION OF PRESSON ENERFLEX.



**CERTIFIED AS-BUILT**

**TIE-IN SCHEDULE**

- 1 6" 800# F.W. INLET EL. 9'-35" 4
- 2 6" 800# F.W. TO E-404 EL. 13'-7" 4
- 3 ANNEALMENT BRASS GAS FROM E-404 EL. 15'-0" BOP EL. 15'-25" 4
- 4 GAS FROM E-404 EL. 15'-25" 4
- 5 SWEET GAS OUTLET EL. 15'-0" BOP EL. 15'-25" 4
- 6 LEAN AMINE TO E-403 EL. 15'-9 3/8" FOP EL. 15'-9" BOP EL. 15'-9" 4
- 7 LEAN AMINE FROM H-800 EL. 15'-9" BOP EL. 15'-9" 4
- 8 LEAN AMINE TO E-406 EL. 15'-5" 4
- 9 3" 150# RF FROM E-406 EL. 9'-19 1/2" 4
- 10 6" 150# RF TO H-800 EL. 13'-9" 4
- 11 150# RF FROM C-301 EL. 6'-9 1/2" 4
- 12 WASTE TO C-301 EL. 15'-3 1/2" 4
- 13 WASTE FROM H-800 EL. 18'-11" 4
- 14 OVERHEAD WATOR TO E-405 EL. 18'-0" FOP EL. 18'-0" 4
- 15 REFILL LIQUID TO C-302 EL. 15'-0" 4
- 16 GAS TO INCHERATOR EL. 9'-58" 4
- 17 150# RF FLEX/PURGE GAS INLET EL. 9'-19 1/2" 4
- 18 150# RF TO H-800 EL. 10'-24" BOP EL. 10'-24" 4
- 19 150# RF FROM C-301 EL. 10'-45" 4
- 20 150# RF FROM HEADER EL. 8'-0" 4
- 21 150# RF FROM H-800 EL. 10'-24" BOP EL. 10'-24" 4
- 22 ANNEALMENT BRASS WASTE FROM H-800 EL. 10'-24" BOP EL. 10'-24" 4
- 23 FLARE WASTE EL. 8'-0" BOP EL. 8'-0" 4
- 24 150# RF FROM PSV-80005 EL. 11'-0 1/2" 4
- 25 INSTRUMENT AIR HEADER EL. 10'-24" BOP EL. 10'-24" 4
- 26 INSTRUMENT AIR TO H-800 EL. 10'-24" BOP EL. 10'-24" 4
- 27 3000# NPT AIR FROM HEADER EL. 8'-0" 4
- 28 3000# NPT AIR FROM H-800 EL. 10'-24" BOP EL. 10'-24" 4
- 29 3000# NPT FROM H-800 EL. 10'-24" BOP EL. 10'-24" 4
- 30 3000# NPT FROM WASTE TANK EL. 1'-3" 4
- 31 3000# NPT FROM WASTE TANK EL. 3'-0" 4
- 32 3000# NPT FROM AMINE TANK EL. 4'-0" 4
- 33 3000# NPT FROM AMINE TANK EL. 4'-0" 4
- 34 3000# NPT FROM AMINE TANK EL. 4'-0" 4
- 35 3000# NPT FROM AMINE TANK EL. 4'-0" 4
- 36 3" 150# RF TO PSV-8005 EL. 10'-7 1/2" 4
- 37 150# RF FROM TRUCK IN EL. 10'-7 1/2" 4
- 38 150# RF TO AMINE DRAIN/TRUCK OUT EL. 6'-11 1/2" FOP EL. 6'-11 1/2" 4
- 39 150# RF FROM TRUCK IN EL. 10'-7 1/2" 4
- 40 150# RF FROM TRUCK IN EL. 10'-7 1/2" 4
- 41 150# RF FROM TRUCK IN EL. 10'-7 1/2" 4
- 42 150# RF FROM TRUCK IN EL. 10'-7 1/2" 4
- 43 150# RF FROM TRUCK IN EL. 10'-7 1/2" 4
- 44 150# RF FROM TRUCK IN EL. 10'-7 1/2" 4
- 45 150# RF FROM TRUCK IN EL. 10'-7 1/2" 4
- 46 150# RF FROM TRUCK IN EL. 10'-7 1/2" 4
- 47 150# RF FROM TRUCK IN EL. 10'-7 1/2" 4
- 48 150# RF FROM TRUCK IN EL. 10'-7 1/2" 4
- 49 150# RF FROM TRUCK IN EL. 10'-7 1/2" 4
- 50 150# RF FROM TRUCK IN EL. 10'-7 1/2" 4
- 51 150# RF FROM TRUCK IN EL. 10'-7 1/2" 4
- 52 150# RF FROM TRUCK IN EL. 10'-7 1/2" 4
- 53 150# RF FROM TRUCK IN EL. 10'-7 1/2" 4
- 54 150# RF FROM TRUCK IN EL. 10'-7 1/2" 4
- 55 150# RF FROM TRUCK IN EL. 10'-7 1/2" 4
- 56 150# RF FROM TRUCK IN EL. 10'-7 1/2" 4
- 57 150# RF FROM TRUCK IN EL. 10'-7 1/2" 4
- 58 150# RF FROM TRUCK IN EL. 10'-7 1/2" 4
- 59 150# RF FROM TRUCK IN EL. 10'-7 1/2" 4
- 60 150# RF FROM TRUCK IN EL. 10'-7 1/2" 4
- 61 150# RF FROM TRUCK IN EL. 10'-7 1/2" 4
- 62 150# RF FROM TRUCK IN EL. 10'-7 1/2" 4
- 63 150# RF FROM TRUCK IN EL. 10'-7 1/2" 4
- 64 150# RF FROM TRUCK IN EL. 10'-7 1/2" 4
- 65 150# RF FROM TRUCK IN EL. 10'-7 1/2" 4
- 66 150# RF FROM TRUCK IN EL. 10'-7 1/2" 4
- 67 150# RF FROM TRUCK IN EL. 10'-7 1/2" 4
- 68 150# RF FROM TRUCK IN EL. 10'-7 1/2" 4
- 69 150# RF FROM TRUCK IN EL. 10'-7 1/2" 4
- 70 150# RF FROM TRUCK IN EL. 10'-7 1/2" 4
- 71 150# RF FROM TRUCK IN EL. 10'-7 1/2" 4
- 72 150# RF FROM TRUCK IN EL. 10'-7 1/2" 4
- 73 150# RF FROM TRUCK IN EL. 10'-7 1/2" 4
- 74 150# RF FROM TRUCK IN EL. 10'-7 1/2" 4
- 75 150# RF FROM TRUCK IN EL. 10'-7 1/2" 4
- 76 150# RF FROM TRUCK IN EL. 10'-7 1/2" 4
- 77 150# RF FROM TRUCK IN EL. 10'-7 1/2" 4
- 78 150# RF FROM TRUCK IN EL. 10'-7 1/2" 4
- 79 150# RF FROM TRUCK IN EL. 10'-7 1/2" 4
- 80 150# RF FROM TRUCK IN EL. 10'-7 1/2" 4
- 81 150# RF FROM TRUCK IN EL. 10'-7 1/2" 4
- 82 150# RF FROM TRUCK IN EL. 10'-7 1/2" 4
- 83 150# RF FROM TRUCK IN EL. 10'-7 1/2" 4
- 84 150# RF FROM TRUCK IN EL. 10'-7 1/2" 4
- 85 150# RF FROM TRUCK IN EL. 10'-7 1/2" 4
- 86 150# RF FROM TRUCK IN EL. 10'-7 1/2" 4
- 87 150# RF FROM TRUCK IN EL. 10'-7 1/2" 4
- 88 150# RF FROM TRUCK IN EL. 10'-7 1/2" 4
- 89 150# RF FROM TRUCK IN EL. 10'-7 1/2" 4
- 90 150# RF FROM TRUCK IN EL. 10'-7 1/2" 4
- 91 150# RF FROM TRUCK IN EL. 10'-7 1/2" 4
- 92 150# RF FROM TRUCK IN EL. 10'-7 1/2" 4
- 93 150# RF FROM TRUCK IN EL. 10'-7 1/2" 4
- 94 150# RF FROM TRUCK IN EL. 10'-7 1/2" 4
- 95 150# RF FROM TRUCK IN EL. 10'-7 1/2" 4
- 96 150# RF FROM TRUCK IN EL. 10'-7 1/2" 4
- 97 150# RF FROM TRUCK IN EL. 10'-7 1/2" 4
- 98 150# RF FROM TRUCK IN EL. 10'-7 1/2" 4
- 99 150# RF FROM TRUCK IN EL. 10'-7 1/2" 4
- 100 150# RF FROM TRUCK IN EL. 10'-7 1/2" 4

NO.	DESCRIPTION	DATE	BY	CHK
1	AS BUILT	05/08/18	CM	BAK
2	REVISION: SWD EDGE TAGS	05/07/05	CM	
3	REVISION: SWD EDGE TAGS & H-800 DRAIN	05/07/01	CM	
4	REVISION: TIE-IN #2 TO EAST SIDE	05/06/17	CM	
5	REVISION: INSTRUMENT AIR CONNECTION	05/04/28	CM	
6	REVISION: ISSUED FOR APPROVAL	05/04/28	CM	

CUSTOMER: FORT ENERGY CORPORATION c/o BDR ENGINEERING  
 PROJECT: CLEARWATER GAS PLANT  
 FILE: LSD 11-17-63-06 WSM  
 SHEET: AMINE SWEETENING FACILITY  
 SECTION: C-C  
 DRAWN: [Signature]  
 DATE: 05/04/28  
 SCALE: 3/8" = 1'-0"  
 SHEET: B7201-360 SHIT. 5 OF 5



CUSTOMER PROJECT: 43874-3  
 SHEET: B7201-06