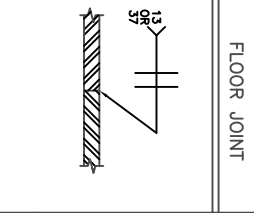
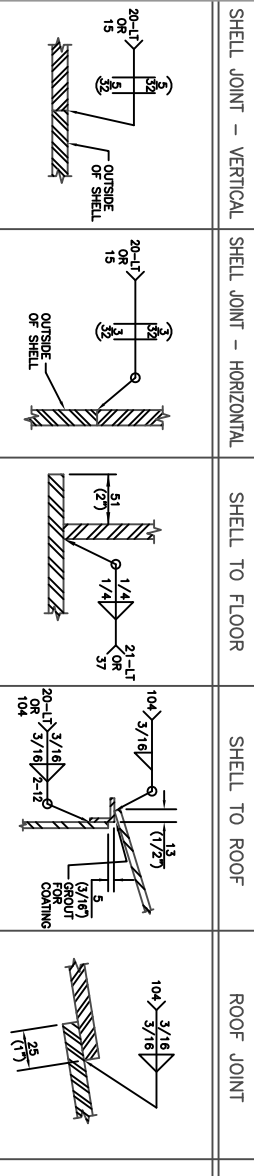


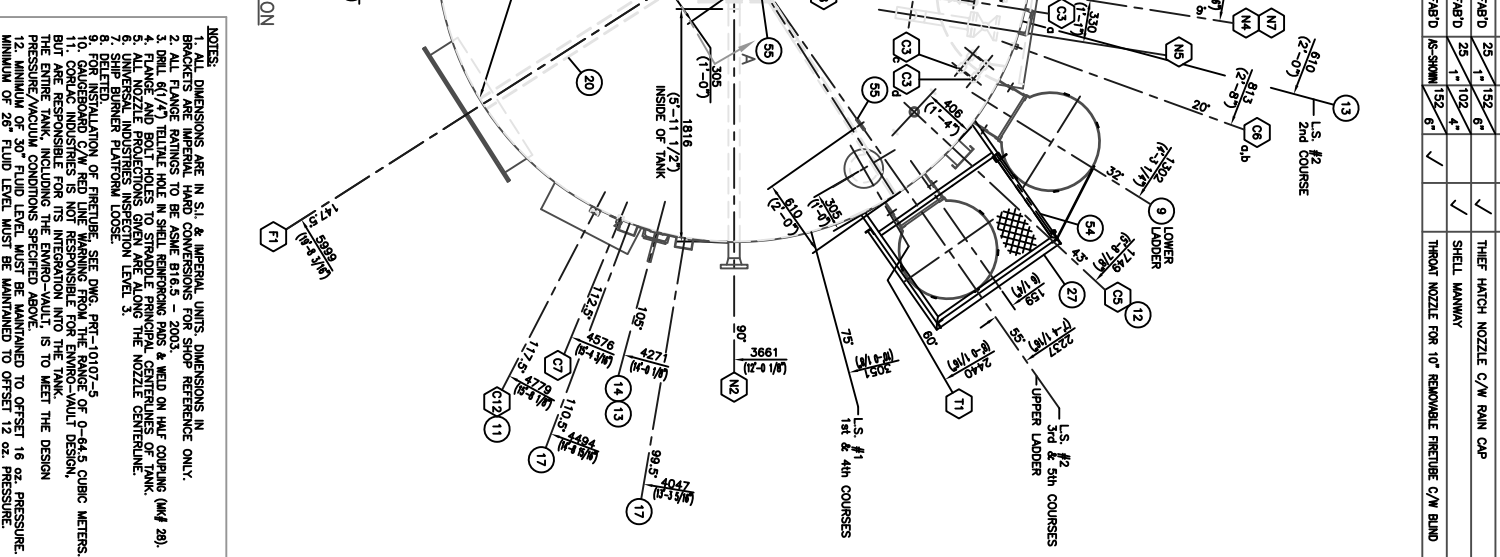
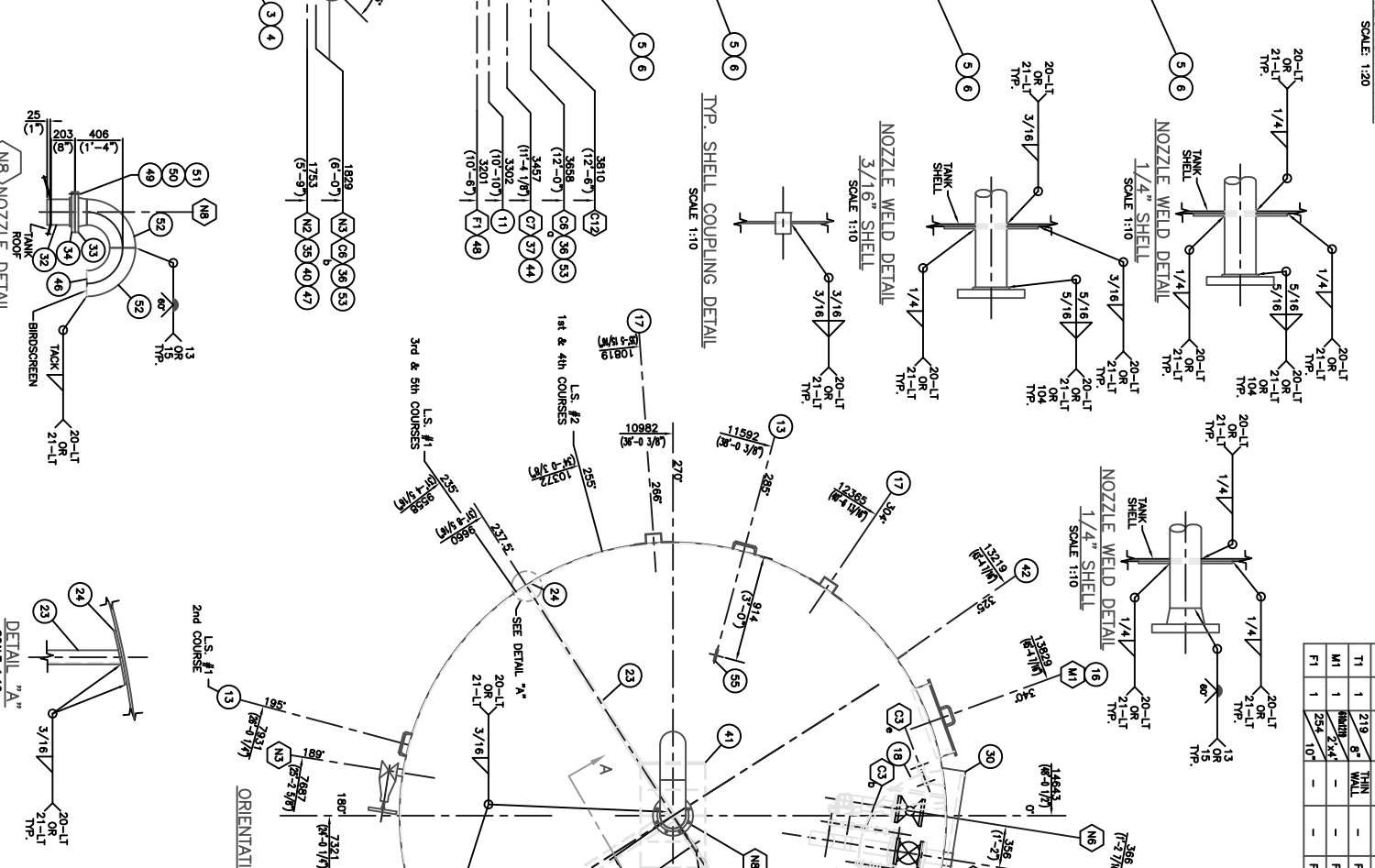
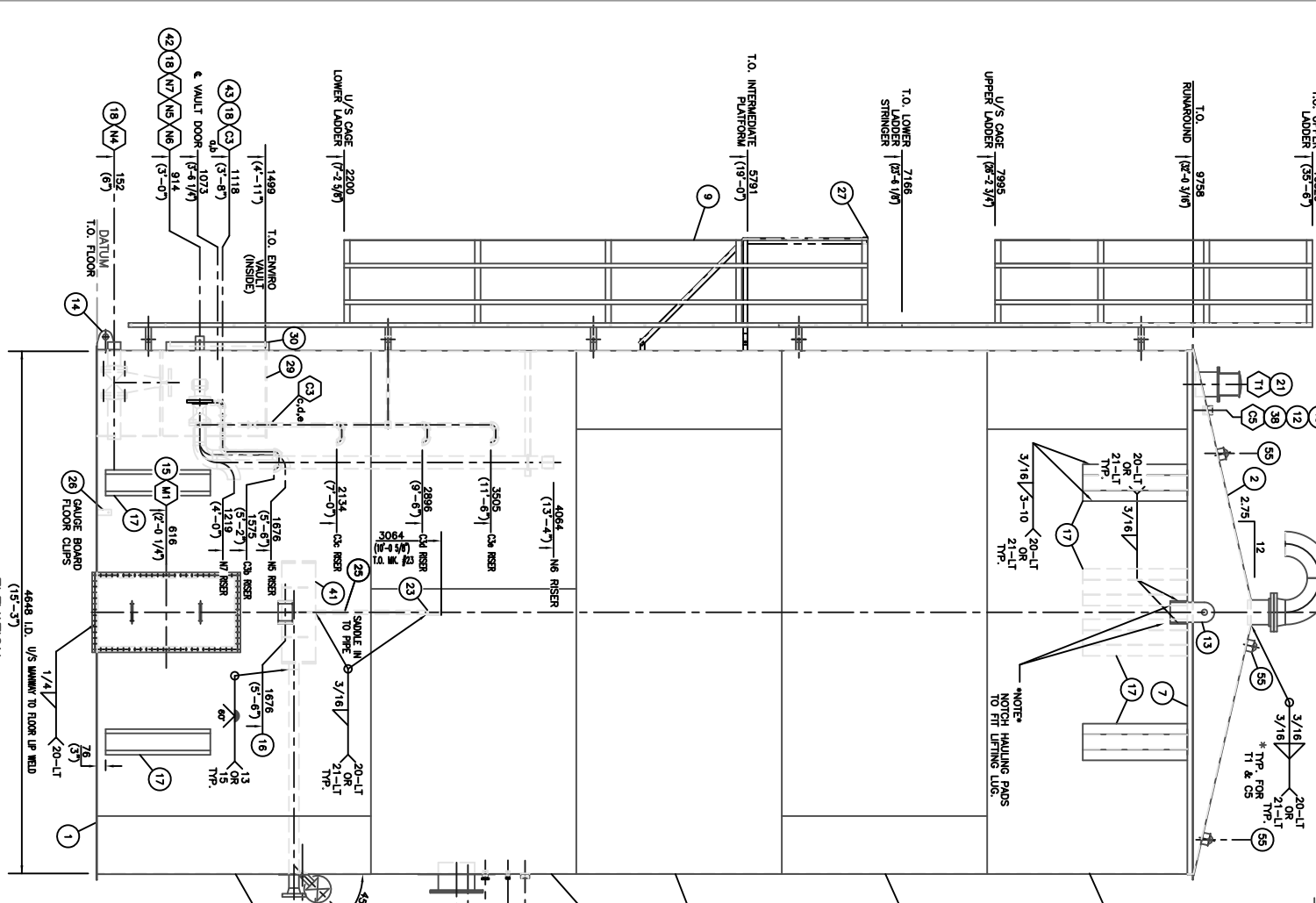
STANDARD WELD DETAILS (N.T.S.)



DESIGN CODE:	AF-12F ADDED
DESIGN NO.:	024472-4 TO 8
DESIGN PRESSURE:	16 psig. PRESS. / 0.4 psig. VAC.
DESIGN TEMPERATURE:	-13°C (8.6°F) TO 63°C (200°F)
OPERATING TEMPERATURE:	-
SERVICE:	SHELTER
OPERATING LEVEL:	-
CORROSION ALLOWANCE:	NONE
OTHER:	-

MK	NO	SIZE	SCH	RATE	TYPE	PROJECTION	REPAD	DESCRIPTION
						INT. EXT.	YES NO	
	C3	5	2	3000#	FULL ORG			SHIELD CONNECTIONS C/W SPRING LOADED BALL VALVES (IN WALL)
	C5	1	2	3000#	FULL ORG			BURNER CONTROL BOX (2'-0\"/>
	C5	1	2	3000#	FULL ORG			3\"/>
	C5	2	2	3000#	FULL ORG			LEVEL INDICATOR GAUGE BOARD ACCESS
	C7	1	1	3000#	FULL ORG			TI (0\"/>
	C7	1	1	3000#	FULL ORG			TC C/W PLUG (FUTURE)
	C12	1	2	3000#	FULL ORG			LIUSD
	T1	1	2	3000#	FAB'D			THIEF HATCH NOZZLE C/W RAIN CAP
	M1	1	2	3000#	FAB'D			SHELL WALKWAY
	F1	1	2	3000#	FAB'D			THROAT NOZZLE FOR 10\"/>

MK	QTY	DESCRIPTION	MATERIAL	WT
1	2	FLOOR PLATE (HNU) 1/4\"/>		
2	1	ROOF PLATE (HNU) 3/8\"/>		
3	1	SHELL PLATE 1/4\"/>		
4	1	SHELL PLATE 1/4\"/>		
5	4	SHELL PLATE 3/16\"/>		
6	4	SHELL PLATE 3/16\"/>		
7	1	RUNAROUND ANGLE 2\"/>		
8	1	UPPER & LOWER LADDER	SEE DWG. PRE-10107-3	404
9	1	BURNER CONTROL BOX (2'-0\"/>		
10	1	3\"/>		
11	1	LEVEL INDICATOR GAUGE BOARD ACCESS	ALUMINUM	30
12	1	LIFTING LUG	SEE DWG. PRE-10107-2	111
13	4	TALKING LUG C/W REPAD	SEE DWG. PRE-4275	84
14	1	SHELL WALKWAY 2'-0\"/>		
15	1	NAMEPLATE BRACKET C/W NAMEPLATE	PRE-4276	10
16	1	TANK HAULING PAD	PRE-1221	191
17	6	NOZZLE DETAIL	PRE-673	5
18	1	NOZZLE DETAIL	PRE-1494	180
19	1	CHANNEL C4 x 5.4# x 7'-6\"/>		
20	1	THIEF HATCH NOZZLE C/W RAIN CAP	G40-21-44W	41
21	1	FRETICLE BRACE FOR 10\"/>		
22	1	CHANNEL C4 x 5.4# x 15'-2\"/>		
23	1	REPAD PLATE 1/4\"/>		
24	4	PIPE 1\"/>		
25	2	FLATBAR 1/4\"/>		
26	2	INTERMEDIATE PLATFORM	PRE-4283	1
27	1	HALL COUPLING 1/4\"/>		
28	3	ENMRO-WALK WALL/ROOF DETAILS (6\"/>		
29	1	PIPE 8\"/>		
30	1	FLANGE 8\"/>		
31	1	FLANGE 8\"/>		
32	1	FLANGE 8\"/>		
33	1	FLANGE 8\"/>		
34	1	FLANGE 8\"/>		
35	1	FLANGE 3\"/>		
36	2	FULL COUPLING 3/4\"/>		
37	1	FULL COUPLING 2\"/>		
38	1	PIPE 3\"/>		
39	1	DEBOWER 1'-0\"/>		
40	1	GROUNDING LUG	SEE DWG. PRE-2400(PRE-10107-1)	149
41	1	ENMRO-WALK WALL/ROOF DETAILS (6\"/>		
42	1	ENMRO-WALK WALL/ROOF DETAILS (6\"/>		
43	1	ENMRO-WALK WALL/ROOF DETAILS (6\"/>		
44	1	HEX PLUG 1\"/>		
45	1	BUSHING 2\"/>		
46	1	EXPANDED METAL 3/4\"/>		
47	1	REPAD PLATE 1/4\"/>		
48	1	FRETICLE BRACE FOR 10\"/>		
49	8	STUD 3/4\"/>		
50	16	HEX NUT 3/4\"/>		
51	2	GASKET 8\"/>		
52	1	ELBOW 8\"/>		
53	2	TEMPERATURE GAUGE 2\"/>		
54	1	SAFETY GATE	SEE DWG. PRE-10107-4	24
55	3	TANK ROOF SAFETY HARNES LUG	PRE-2533	1



NO	DATE (M/Y)	REVISIONS
1	19/07/12	AS-BUILT; REMOVED NOTE 13 & C10
2	14/07/12	AS-BUILT

THIS DRAWING IS THE PROPERTY OF CORNIC INDUSTRIES AND IS TO BE USED ONLY IN CONNECTION WITH PERFORMANCE OF WORK BY CORNIC INDUSTRIES. REPRODUCTION OR USE OF THIS DRAWING IN WHOLE OR IN PART FOR ANY OTHER PURPOSE IS EXPRESSLY FORBIDDEN.

DATE (M/Y): 12/04/12

DWG TITLE: 1000 BBL HEAVY OIL PRODUCTION TANKS GENERAL ARRANGEMENT

PennWest Energy

INDUSTRIES

159 CU. METERS (1000 BU)

T-025372-0101

1 OF 1