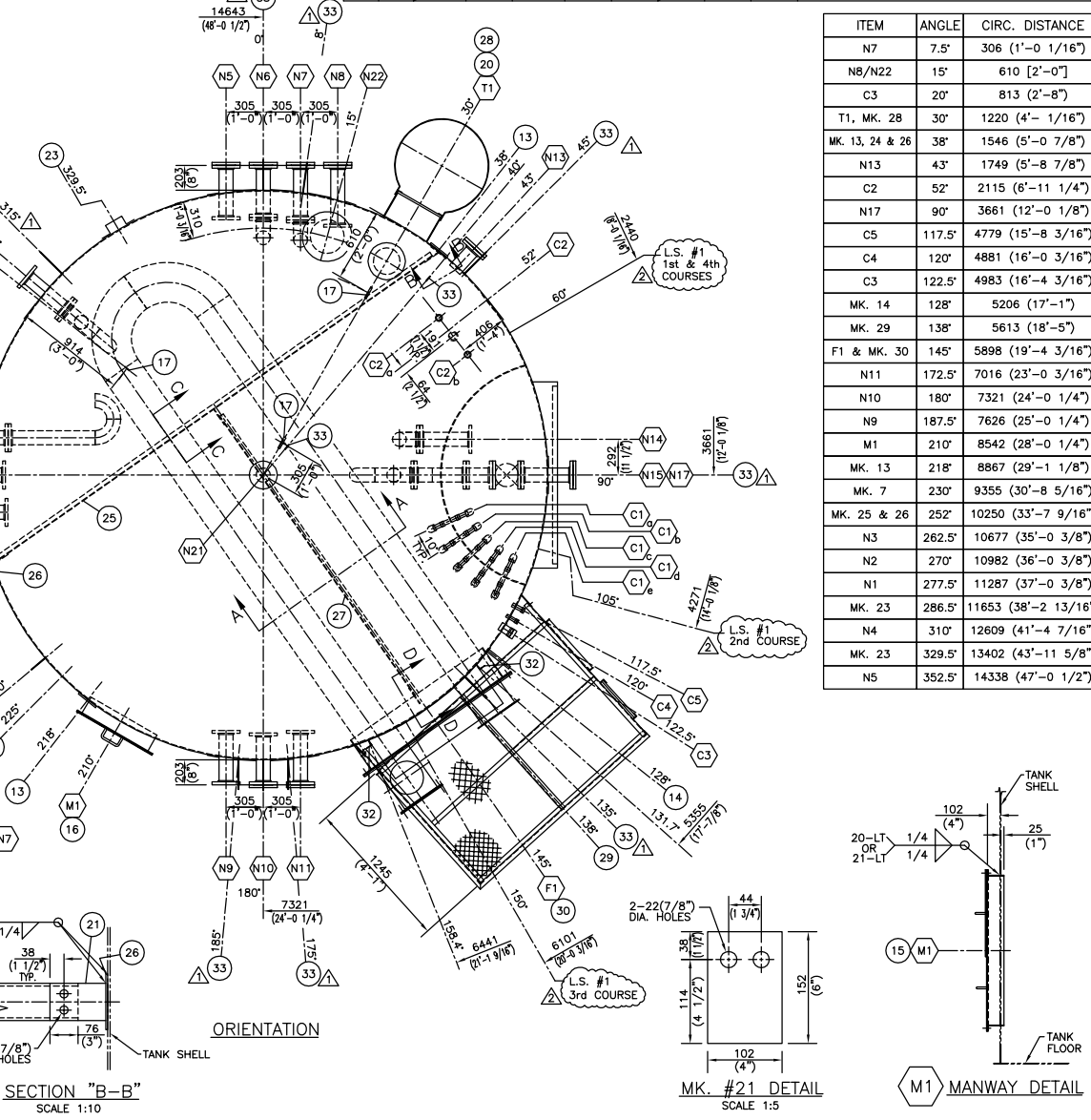
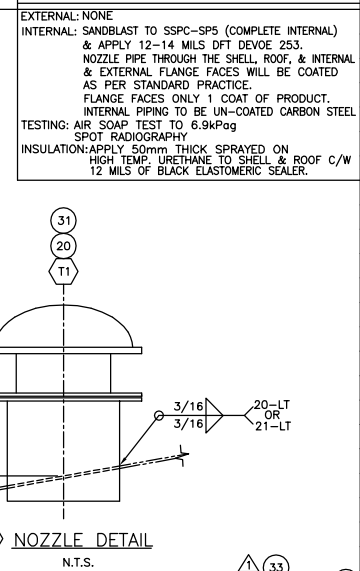
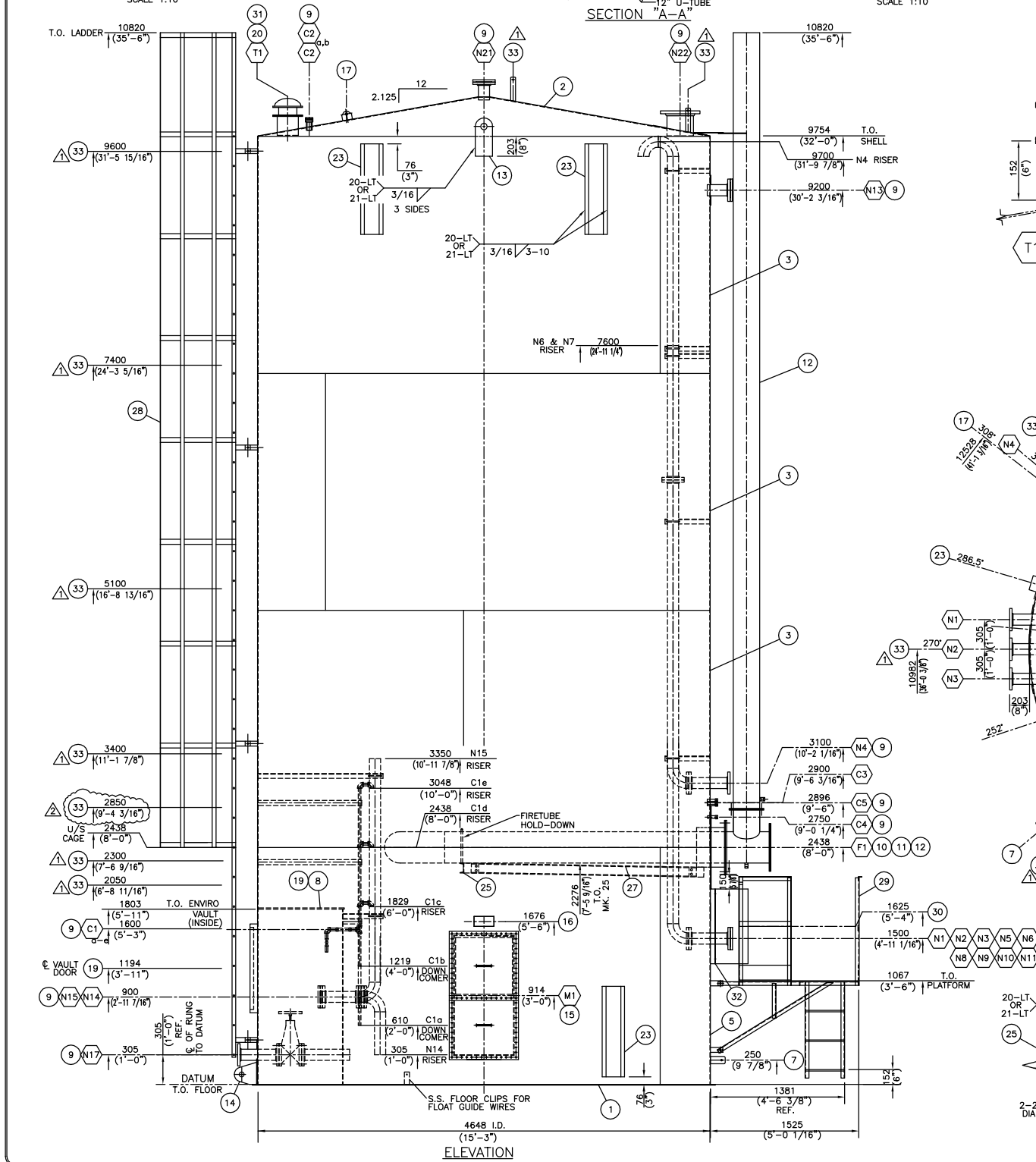
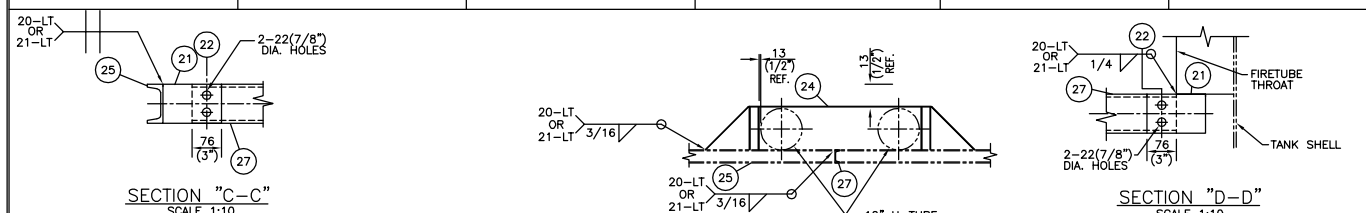
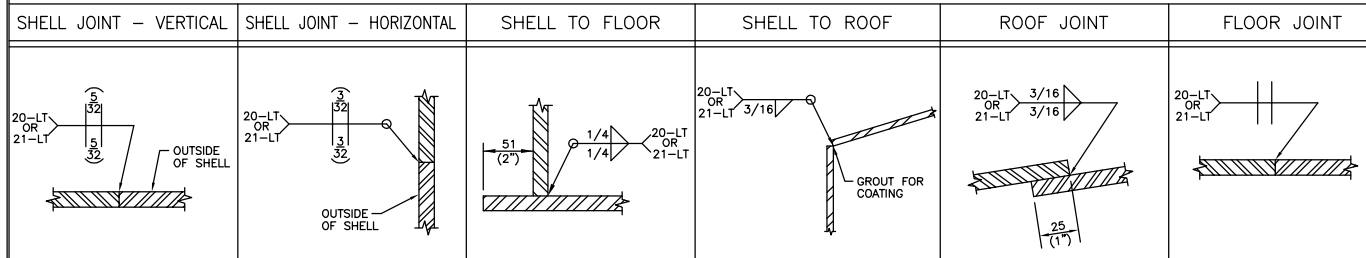


U.I.C. STANDARD WELD DETAILS (N.T.S.)



NOZZLE SCHEDULE

MK	NO	SIZE	SCH	RATE	TYPE	PROJECTION		REPAD		DESCRIPTION
						INT.	EXT.	YES	NO	
N1	1	114"	4"	STD	CLASS 150	RFSO	215	223	✓	WATER INLET C/W INTERNAL PIPE
N2	1	114"	4"	STD	CLASS 150	RFSO	215	203	✓	MIN. FLOW INLET
N3	1	114"	4"	STD	CLASS 150	RFSO	215	223	✓	WATER OUTLET
N4	1	114"	4"	STD	CLASS 150	RFSO	215	223	✓	BLANKET GAS INLET & VAPOUR OUTLET C/W INTERNAL RISER & GOOSENECK
N5	1	114"	4"	STD	CLASS 150	RFSO	215	223	✓	SPARE C/W BLIND
N6	1	114"	4"	STD	CLASS 150	RFSO	215	203	✓	SPARE C/W INTERNAL RISER & BLIND
N7	1	114"	4"	STD	CLASS 150	RFSO	215	223	✓	SPARE C/W INTERNAL RISER & BLIND
N8	1	114"	4"	STD	CLASS 150	RFSO	215	223	✓	SPARE C/W BLIND
N9	1	114"	4"	STD	CLASS 150	RFSO	215	223	✓	TANK LEVEL (DP)
N10	1	114"	4"	STD	CLASS 150	RFSO	215	203	✓	SPARE C/W BLIND
N11	1	114"	4"	STD	CLASS 150	RFSO	215	223	✓	SPARE C/W BLIND
N13	1	114"	4"	STD	CLASS 150	RFSO	25	203	✓	SPARE C/W BLIND
N14	1	114"	4"	STD	CLASS 150	RFSO	215	203	✓	TRUCK OUT C/W DOWNCOMER (INSIDE ENVIRO-VAULT)
N15	1	114"	4"	STD	CLASS 150	RFSO	215	203	✓	SPARE C/W BLIND & RISER (INSIDE ENVIRO-VAULT)
N17	1	114"	4"	XS	CLASS 150	RFSO	419	67	✓	DRAIN (INSIDE ENVIRO-VAULT)
N21	1	114"	4"	STD	CLASS 150	RFSO	25	152	✓	SPARE C/W BLIND
N22	1	273"	10"	STD	CLASS 150	RFSO	25	203	✓	TANK LEVEL (RADAR)
C1	1	25"	1"	-	CL.3000	HALF CPLG	-	-	✓	SAMPLE CONNECTION C/W DOWNCOMER & BALL VALVE (N VAULT WALL)
C1	1	25"	1"	-	CL.3000	HALF CPLG	-	-	✓	SAMPLE CONNECTION C/W DOWNCOMER & BALL VALVE (N VAULT WALL)
C1	1	25"	1"	-	CL.3000	HALF CPLG	-	-	✓	SAMPLE CONNECTION C/W RISER & BALL VALVE (N VAULT WALL)
C1	1	25"	1"	-	CL.3000	HALF CPLG	-	-	✓	SAMPLE CONNECTION C/W RISER & BALL VALVE (N VAULT WALL)
C1	1	25"	1"	-	CL.3000	HALF CPLG	-	-	✓	SAMPLE CONNECTION C/W RISER & BALL VALVE (N VAULT WALL)
C2	1	51"	2"	-	CL.3000	HALF CPLG	-	-	✓	PIT CONNECTION
C2	2	32"	1 1/4"	-	CL.3000	HALF CPLG	-	-	✓	SPARE C/W PLUG
C3	1	51"	2"	-	CL.3000	HALF CPLG	-	-	✓	LEVEL SWITCH
C4	1	19"	3/4"	-	CL.3000	HALF CPLG	-	-	✓	TEMPERATURE INDICATOR
C5	1	25"	1"	-	CL.3000	HALF CPLG	-	-	✓	TEMPERATURE TRANSMITTER (BMS)
T1	1	219"	8"	LW	-	FAB'D	25	152	✓	THIEF HATCH NOZZLE (MARSHHAWK)
M1	1	324"	12"	-	-	FAB'D	102	4"	✓	SHELL MANWAY C/W SPLIT COVER
F1	1	324"	12"	-	-	FAB'D	152	6"	✓	THROAT NOZZLE FOR 12" DIA. U-TUBE

MATERIAL LIST

MK	QTY	DESCRIPTION	MATERIAL	WT
1	2	FLOOR HALF: PLATE 1/4" THK. x 15'-7 1/2" DIA.	PRT-2425	1958
2	2	ROOF HALF: PLATE 3/16" THK. x 15'-5 13/16" FLAT DIA.	PRT-2426	1467
3	3	SHELL: PLATE 3/16" THK. x 8'-0" x 47'-11 1/2" LG.	G40.21-44W	8814
4	3	BLANKET GAS INLET & VAPOUR OUTLET C/W INTERNAL RISER & GOOSENECK		
5	1	SHELL: PLATE 1/4" THK. x 8'-0" x 47'-11 1/16" LG.	G40.21-44W	3917
6	1	SPARE C/W INTERNAL RISER & BLIND		
7	1	SPARE C/W INTERNAL RISER & BLIND		
8	1	SPARE C/W BLIND		
9	1	ENVIRO-VAULT WALL/ROOF FOR 6' x 6' VAULT	REF. DWG. T-024893-A105	848
10	1	NOZZLE DETAILS	REF. DWG. T-024893-D102	2036
11	1	BURNER RUN		22
12	1	BURNER (BY OTHERS)		90
13	1	FIRETUBE REMOVABLE U-TUBE 12" SCH STD. 750,000 BTU/HR. C/W THROAT AND STACK	REF. DWG. T-024893-B104	2540
14	2	LIFTING LUG	PRT-6985	15
15	1	TAILING LUG C/W REPAD	PRT-4276	5
16	1	SHELL MANWAY 2'-0" x 4'-0" C/W 1/4" SPLIT COVER	PRT-1221 PRT-1492	191
17	1	NAMEPLATE BRACKET C/W NAMEPLATE	PRT-1478 PRT-2886	5
18	3	TANK ROOF SAFETY HARNESS LUG	PRT-2533	1
19	1	ENVIRO-VAULT DOOR DETAIL (6' x 6' STYLE)	T-024893-C103	73
20	1	THIEF HATCH NOZZLE 8"	PRT-2891	21
21	4	PLATE 1/4" THK. x 4" x 6" LG.	G40.21-44W	7
22	8	BOLT 3/4" DIA. x 1 1/2" LG. C/W NUT & WASHER	SA-325	2
23	4	TANK HAULING PAD	PRT-1494	120
24	1	PIT CONNECTION	PRT-6993	8
25	1	CHANNEL C4 x 5.4# x 14'-2 3/16" LG.	G40.21-44W	76
26	2	REPAD PLATE 3/16" THK. x 6" DIA.	G40.21-44W	2
27	1	CHANNEL C4 x 5.4# x 9'-1 11/16" LG.	G40.21-44W	49
28	1	LADDER 34"-6" C/W 27"-6" CAGE & FALL ARREST MSA	PRT-2966	385
29	1	UIC BURNER PLATFORM 4'-0" x 6'-0" (3 RUNG LADDER)	PRT-2892	290
30	1	BURNER CONTROL BOX		-
31	1	MARSH HAWK THIEF HATCH 8" API SET @ 16oz PRESS./0.4oz VAC. STD SEAL		70
32	1	HOT BOX ATTACHMENT	REF. DWG. T-024893-A106	8
33	17	CABLE TRAY CLIPS	REF. DWG. T-024893-C310	17
		INSULATION		1000
		SUBTOTAL		24038
		x 1.06		
		TOTAL		25480 lbs
		APPROXIMATE OPERATING WEIGHT:		378,044 lbs

ITEM	ANGLE	CIRC. DISTANCE
N7	7.5°	306 (1'-0 1/16")
N8/N22	15°	610 [2'-0"]
C3	20°	813 (2'-8")
T1, MK. 28	30°	1220 (4'-1 1/16")
MK. 13, 24 & 26	38°	1546 (5'-0 7/8")
N13	43°	1749 (5'-8 7/8")
C2	52°	2115 (6'-11 1/4")
N17	90°	3661 (12'-0 1/8")
C5	117.5°	4779 (15'-8 3/16")
C4	120°	4881 (16'-0 3/16")
C3	122.5°	4983 (16'-4 3/16")
MK. 14	128°	5206 (17'-1")
MK. 29	138°	5613 (18'-5")
F1 & MK. 30	145°	5898 (19'-4 3/16")
N11	172.5°	7016 (23'-0 3/16")
N10	180°	7321 (24'-0 1/4")
N9	187.5°	7626 (25'-0 1/4")
M1	210°	8542 (28'-0 1/4")
MK. 13	218°	8867 (29'-1 1/8")
MK. 7	230°	9355 (30'-8 5/16")
MK. 25 & 26	252°	10250 (33'-7 9/16")
N3	262.5°	10677 (35'-0 3/8")
N2	270°	10982 (36'-0 3/8")
N1	277.5°	11287 (37'-0 3/8")
MK. 23	286.5°	11653 (38'-2 13/16")
N4	310°	12609 (41'-4 7/16")
MK. 23	329.5°	13402 (43'-11 5/8")
N5	352.5°	14338 (47'-0 1/2")

- NOTES:
- ALL DIMENSIONS ARE IN S.I. & IMPERIAL UNITS. DIMENSIONS IN BRACKETS ARE IMPERIAL HARD CONVERSIONS FOR SHOP REFERENCE ONLY.
  - ALL FLANGE RATINGS TO BE ASME B16.5 - 2003.
  - DRILL 1/4" TELLTALE HOLE IN REINFORCING PADS, & ADD 1/4" HALF CPLG & NIPPLE TO EXTEND BEYOND INSULATION.
  - FLANGE AND BOLT HOLES TO STRADDLE PRINCIPAL CENTERLINES OF TANK.
  - ALL NOZZLE PROJECTIONS GIVEN ARE ALONG THE NOZZLE CENTERLINE.
  - INSPECTION LEVEL 2.
  - TANK FABRICATOR IS NOT RESPONSIBLE FOR ENVIRO-VAULT DESIGN, BUT ARE RESPONSIBLE FOR ITS INTEGRATION INTO THE TANK. THE ENTIRE TANK, INCLUDING THE ENVIRO-VAULT, IS TO MEET THE DESIGN PRESSURE/VACUUM CONDITIONS SPECIFIED ABOVE.
  - MINIMUM OF 23" FLUID LEVEL MUST BE MAINTAINED TO OFFSET PRESSURE.

NO	DATE (d/m/y)	REVISIONS	BY	APPD
11/12/12		AS-BUILT; DELETED GOOSENECKS ON N6, N7, N15	RG	
22/05/12		REVISED VERT. SEAMS & MOVE CABLE TRAY CLIP FROM 2050mm TO 2850mm	DB	JK
23/04/12		REVISED SERVICE OF C3 & DELETED PLUG, ADDED (17) CABLE TRAY CLIPS	DB	JK
14/03/12		ISSUED FOR CONSTRUCTION	DB	JK
29/02/12		ISSUED FOR CUSTOMER APPROVAL	DB	JK

THIS DRAWING IS THE PROPERTY OF PEACELAND FABRICATING & SUPPLY LTD. AND IS TO BE USED ONLY IN CONJUNCTION WITH PERFORMANCE OF WORK BY PEACELAND FABRICATING & SUPPLY LTD.. REPRODUCTION OR USE OF IN WHOLE OR IN PART FOR ANY OTHER PURPOSE IS EXPRESSLY FORBIDDEN.

**PEACELAND FABRICATING**

CLIENT: PENNWEST PETROLEUM LTD.  
C/O WORLEYPARSONS  
HARMON VALLEY SOUTH PILOT PLANT, PEACE RIVER, ALBERTA  
P.O. #11C8913-00-ME-POD-0017

DWG TITLE: 1000 BBL BFW TANK, TAG# 0400-T-001  
GENERAL ARRANGEMENT

SIZE: 4648mm I.D. x 9754mm HIGH (15'-3" I.D. x 32'-0" HIGH) VOLUME: 160 CU. METERS (1000 Bbl) NOM.

SCALE: 1:30 DWN BY: D. BENKO DWG NO.: T-024893-D301 SHEET NO.: 1 of 1

DATE (d/m/y): 23/02/12 CHKD: APPD: